

THE

June 2013

# UTILITYSOURCE

Products and Services for Today's Electric, Telecom, and CATV Utilities

**VMAC Releases**

The Ultimate Utility Belt

**ITW Introduces  
Warehouse  
Automation  
Upgrades**



# SPECIALIZED CUSTOMER-DRIVEN SOLUTIONS.



Dur-A-Lift Inc. manufactures telescoping and articulating aerial personnel and material handling lifts for many needs. Dur-A-Lift's experience, quality & dependability shows in every product that leaves the factory. We pride ourselves on unsurpassed service both during and after the sale.

At Dur-A-Lift we base our success on our customer's successes. By fostering mutually beneficial relationships with our customers on a personal level, we gain the ability to truly understand their needs. Call us today and let us put our experience, quality, dependability & service to work for you!

EXPERIENCE. QUALITY. DEPENDABILITY & SERVICE.

# **DUR-A-LIFT®**



[www.facebook.com/pages/Dur-A-Lift-Inc./282784071750558](https://www.facebook.com/pages/Dur-A-Lift-Inc./282784071750558)

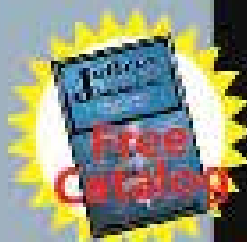
PO Box 30, George, IA 51247 • Toll Free: 1-877-4 DURAIFT • [www.dur-a-lift.com](http://www.dur-a-lift.com)



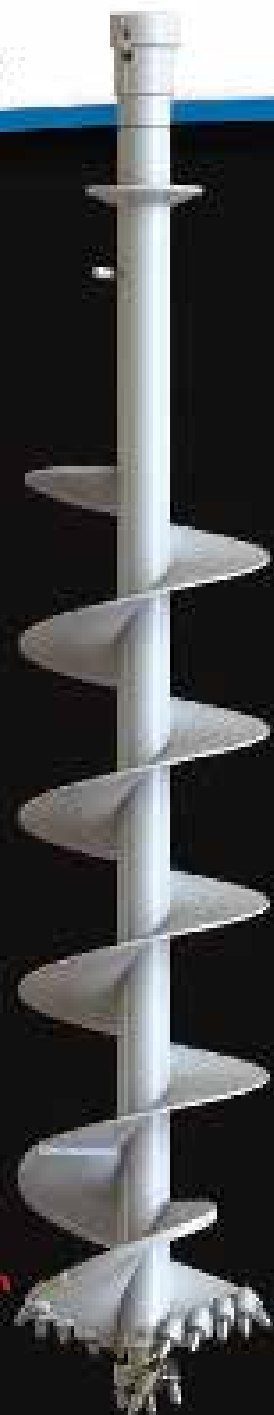
# Jeffrey Machine

Serving the Utility Industry  
with Quality Products and  
Service for 35 Years.

- Rock and Dirt Augers
- Core Barrels
- Rock and Dirt Pilot Bits
- Kelly Extension Bars and Adapters
- Anchor Drive Tools and Accessories
- Hard Surfacing Capabilities
- Replacement Parts



[www.JeffreyMachine.com](http://www.JeffreyMachine.com)



Visit [www.JeffreyMachine.com](http://www.JeffreyMachine.com) to see our catalog  
and complete selection of custom built tools.

Birmingham, Alabama  
(205) 841-8600

4

The Patriot from Armlift

8

ITW Warehouse Automation  
introduces new upgrades to  
VTP Palletizers & VPS Software

16

VMAC Releases The Ultimate  
Utility Belt: The RAPTAIR-MF  
Multifunction Diesel Drive

24

Ad Index

Cover Art Provided  
By Pengo

# THE UTILITYSOURCE

Products and Services for Today's Electric, Telecom, and CATV Utilities

**GROUP PUBLISHER**

Jim Barnhill  
205-733-1343  
jim@handfmedia.net

**PUBLISHER**

Ed Bauer  
ed@handfmedia.net

**V.P. OF SALES**

Bart Beason  
205-733-1342  
bart@tipsmag.net

**EDITOR**

Brandon Greenhill  
205-733-4343  
brandon@tipsmag.net

**CREATIVE DIRECTOR**

Jacklyn Hobson  
jacklyn@handfmedia.net

**WEB DESIGNER**

Danny Thompson  
danny@handfmedia.net

**FACILITATOR/ HEAD COORDINATOR**

Steven Hobson  
steven@tipsmag.net

**CEO**

Christy Hobson

**PRESIDENT**

Glen Hobson

**Executive and Advertising Offices**

2070 Valleydale Rd, Suite # 6

Hoover AL 35244

toll free: 866.981.4511

phone: 205-441-5591 fax: 855-662-2172

www.theutilitysource.com • glen@tipsmag.net

The Utility Source™ is published eleven times a year on a monthly basis by H&F Media Group, Inc., 2070 Valleydale Rd, Hoover AL 35244 USA. The Utility Source™ is distributed free to qualified subscribers. Non-qualified subscription rates are \$57.00 per year in the U.S. and Canada and \$84.00 per year for foreign subscribers (surface mail). U.S. Postage paid at Birmingham, Alabama and additional mailing offices.

The Utility Source™ is distributed to qualified owners and managers in the utility industry. Publisher is not liable for all content (including editorial and illustrations provided by advertisers) of advertisements published and does not accept responsibility for any claims made against the publisher. It is the advertiser's or agency's responsibility to obtain appropriate releases on any item or individuals pictured in an advertisement. Reproduction of this magazine in whole or in part is prohibited without prior written permission from the publisher.

POSTMASTER: Send address changes to  
H&F Media Group, Inc., P.O. Box 382315  
Birmingham, Alabama 35238-2315

PRINTED IN THE USA

Media Sponsor For:



# Nobody's got it all...



## ...BUT WE COME PRETTY DARN CLOSE.

TALLMAN EQUIPMENT


A worldwide supplier of tools to the electric utility industry.

PHONE 877-860-5666

WWW.TALLMANEQUIPMENT.COM



# The Patriot



The ArmLift® Patriot® aerial personnel lift accessory mounts on new or existing heavy duty utility vehicles to efficiently, comfortably and safely replace the use of dangerous ladders or scaffolding for above ground work. For your numerous overhead maintenance duties to include lighting, landscaping and tree trimming, gutter and awning, construction, paint and signage, The Patriot® provides the appropriate method for the job resulting in significant time savings and efficiency while providing the safest overhead working condition for your personnel.

# So Lightweight, You'd Think It Had Wings



## FT6380 Clamp-On Ground Tester

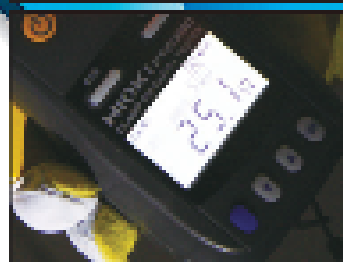
Lightweight for ease of handling, yet a real heavyweight when it comes to storage capacity. The FT6380 has a capacity of storing 2000 data points.

The FT6380 I enables you to work with ease in the field. Create a report

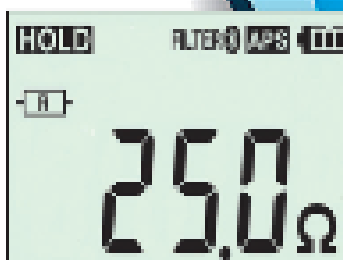
instantly in the field using your cell phone via Bluetooth® wireless technology. Its quick start function eliminates zero calibration while its filter function enables greater measurement accuracy.



8 1/2", Easy Open Jaw



Quick Start: Powering On



Filter Function for Accuracy



Easy Operation in the Field



Bluetooth capability (field to office)

Producing High Quality Products For 78 Years

# HIOKI

9 CORPORATE DRIVE • CRANFORD, NJ 07016  
PHONE: 800.409-9109  
FAX: 609.409-9100  
[www.hioki-usa.com](http://www.hioki-usa.com)



**ISO 9001  
ISO 14001**

FOR A  
CLEAN  
ENVIRONMENT  
"we're doing our part"

At a stowed height of 7' 7", overall width of 5'3" and mounted length of 14'9", its compact size makes it ideal for close quarters work or even interior building maintenance. The Patriot® is powered by a rechargeable deep cycle battery supplying a 12 volt electro-hydraulic power unit for quiet, clean and efficient operation. The walk through bucket is hydraulically leveled and provides an above ground working height of 23 feet with a side reach of 11 feet, 6 inches to accommodate tasks up and over landscaping or ground obstructions. Side outriggers provide solid stability and simple push button operation makes the Patriot® extremely easy to use for any operator at any experience level. The Patriot® detaches from the base utility vehicle literally in a matter of minutes and provides a unique self standing, drive away storage platform so your dump box, sprayer or other attachments may be quickly and easily switched to as needed for maximum efficiency and versatility. Designed to mount on a new or existing TORO Workman, John Deere ProGator, Cushman Turf Truckster or Smithco TCV5000, The Patriot® is a commercial grade, high quality addition to your maintenance equipment fleet that's uniquely designed to save your business time and money while providing unparalleled operator safety and convenience.

All ArmLift products are proudly manufactured in the Heartland of the USA and we are proud to be an Allied product with TORO Corporation's quality lineup of commercial turf equipment. Call today for more information and the location of your local sales & service representative - ArmLift Division of TG Industries, Inc., 1821 Hwy 15 South, PO Box 109, Armstrong, Iowa 50514, Phone 712-864-3737, Fax 712.864.3848, [www.armlift.com](http://www.armlift.com), or email [tgind@ringtelco.com](mailto:tgind@ringtelco.com).





# BLUE LABEL

## TOOL BOXES



If it had sleeves,  
they'd be rolled up  
just like yours.

**DEEZEE**  
The Quality Truck Accessory People

[www.deezee.com](http://www.deezee.com)



Keep up the Rollout!  
www.facebook.com/DeeZeeTruckAccessories



# ITW Warehouse Automation introduces new upgrades to VTP Palletizers & VPS Software

Real-time pallet pattern changes and robots operating up to 40% faster

# AjaxTools&Equipment



2000 GMC C1500  
Teles 1400  
Engine - CAT 3126 - 7.3L  
Pinto Hitch  
GVWR 14000 lbs  
Full Utility Bed

Equipped With:  
Pin Lasher  
Reel Lift w/ Mandrel Brake  
Over Commercial 650 220V  
100' 45" Platform Height Man Lift  
Price: Call

2000 Chevrolet Bucket Truck  
Engine - Cat 3126 Turbo  
Transmission - 6 Speed Manual  
Full Utility Bed  
4 Outriggers  
Equipped With:

Allac AM855 Material Handler Bucket  
2 Man Tub Bucket 700 lb Capacity  
Rotating Bucket  
Reel Capacities 6,000 lbs each  
34" Wide x 84" Tall Reels  
Price: \$22,000



2002 Pitman 1/4 Traction Mini Digger Derrick  
Pinto Hitch  
345 lbs.  
Tongue Jack  
Electric Brakes  
W/ Pitman Model 4,000T Mini Digger Derrick  
Remote Control

Engine - 7.0L Subota over Hydraulic-Chain  
Drive  
Max Boom Cap 2500 lbs & 25' Chase Height  
4 Outriggers  
Price: \$24,500

Standard-Hydraulic  
Self-Loading & Reel Trailer  
Pinto Hitch  
Hydraulic tongue jack & back jack stands

Honda Pony Engine  
Reel Capacities 6,000 lbs each  
34" Wide x 84" Tall Reels  
Price: \$22,000



**1.800.552.2529 OR 530.865.4405**  
**P.O. BOX 518 ORLAND, CA 95963**

ITW Warehouse Automation (ITWWA), the global supplier of innovative, fully-integrated warehousing solutions, announces today the latest improvements to its VTP Palletizers and VPS software. Already one of the industry's most proven software platforms, ITWWA's VPS software has been upgraded to enable pallet patterns to be changed in real-time with minimal effort required of employees or the robotic palletizers. In addition, the VTP Palletizers now operate up to 40% faster with the same flexibility and gentle product handling they are known for.

"We are always looking for ways to provide customers with the most efficient warehousing solutions available," says Jeff Stingel, Vice President of Sales, ITWWA. "These upgrades are an example of that commitment."

The enhanced VPS software now allows users to quickly and easily change pallet patterns without stopping production. Pallet patterns are built with the graphic user interface in the PC and users simply input package sizes and number of cases on a pallet. The software then displays the cases on the screen and users can arrange them as necessary and assign the pallet to start that pattern. With no interruption, the selected pallet automatically starts the new pallet pattern. VPS allows for an infinite number of flips or patterns- further ensuring greater productivity and load integrity. In addition, VPS is simple to use and only requires minutes of training. Powering all ITWWA solutions, from case picking and AS/RS to palletizing, VPS integrates seamlessly with all major WMS and routing software and provides web-based, real-time video viewing and remote monitoring.

"Software is the fundamental building block for any successful warehouse automation solution," says Stingel. "Our VPS software provides the accuracy and flexibility necessary to help our customers successful-



The advertisement features a collage of industrial equipment against a background of a warehouse. The items include:

- VAULT BLOWERS and ACCESSORIES**: A black industrial blower mounted on a wall.
- TRANSFORMER COOLING FANS and ACCESSORIES**: A large, circular, black industrial fan.
- CONFINED SPACE BLOWERS and ACCESSORIES**: A yellow portable blower and a coiled yellow flexible duct.
- Other items include a black circular fan, a green metal frame with a fan, and various electrical components.

**California Turbo, Inc.**  
(800)448-1448 fax: (909)854-2801  
10721 Business Drive, Fontana, CA 92337  
www.californiaturbo.com e-mail: hank@californiaturbo.com



# The Advantage



**ARMLIFT TELESCOPING ARTICULATING - TK SERIES**

## Outriggers or No Outriggers, You Choose

- Our TK Series Aerial Lifts offer your choice of 41', 44' or 46' working heights.
- All TK Series Models are available in both all steel or insulated models and can be mounted on a 17,500 GVW chassis.
- Standard items include full pressure controls at the bucket and base, single stick control at the bucket, hydraulic bucket rotator and 360 degree continuous rotation.
- The TK44 features 44' working height and 28' side reach with no outriggers required.



P.O. Box 109  
Armstrong, IA 50514

phone: 712.864.3737  
fax: 712.864.3848

tgind@ringtelco.com  
www.armlift.com

# TRULY LEVEL-UTIONARY

## Just park, set up and work!

Uphill or down, when working with the Terex® Tru-Level™ tilting pedestal system, slopes won't slow you down. Operate safely and efficiently on slopes up to 20 degrees without sacrificing boom performance or load charts. Stop wasting time on the jobsite, digging out or building up ground to crib the outriggers. Just park, set the truck and activate the Terex Tru-Level system to stay level-headed from start to finish.

For more information contact us at:  
[www.terexutilities.com](http://www.terexutilities.com) • 1-800-447-2731



# TEREX®

## WORKS FOR YOU.™

Terex is a registered trademark of Terex Corporation in the USA and many other countries. ©2013 Terex Corporation.



# Terex Introduces New Tru-Level™ Tilting Pedestal System for Aerial Devices

The new Terex® Tru-Level™ Tilting Pedestal System for Terex SC and HRM Series aerial devices allows for operation on slopes up to 20 degrees to accommodate the need for “real world” truck positioning. This new Terex system decreases stress on the rotation gearbox when rotating “up the hill,” decreases set-up time because it eliminates the need to “crib” the outriggers and does not limit boom operation or load charts.

Other benefits of our unique Tru-Level Tilting Pedestal System include that it keeps the work platform level longitudinally, it boasts safety and less fatigue for the operator having to maintain balance, the aerial device is able to operate in its designed configuration and the cylinders are rated to independently support the rated load.

Another aspect of the Terex Tru-Level Tilting Pedestal System is the anticipated increase in service life of the rotation system. When aerial devices operate on a slope, the rotation system often works harder, especially while rotating against the slope, compared to operating on level ground. This Terex system will save both service time and costs thanks to easier access to the collector block and rotation bearing bolts, as well as decreased stress on the rotation gearbox during uphill work.

“The Tru-Level Pedestal System allows operators to save time during the set-up process by being able to situate the truck on terrain that is outside of the recommended degree of slope without having to either ‘dig out’ or ‘build up’ for proper leveling,” says Jon Promersberger, Terex project engineer. “And it’s easy to use — operators simply need to park, set the truck and activate.”

To effectively use an aerial device equipped with

the Terex Tru-Level Pedestal System, operators need to position the front of the truck pointing directly downhill, and then set the parking brake and place wheel chocks on all wheels. Next, operators should release the parking brake to allow the chassis to roll into the wheel chocks and then reset the parking brake and engage the PTO. Note, operators must verify that they are operating on a side slope of five degrees or less. Once the slope is established, use the lower controls to raise the upper boom about two feet, and then tilt the Tru-Level pedestal to level position front to back (longitudinally) using the indicator mounted on the pedestal. Finally, operators will lower the upper boom to the basket rest or set platform for ground access, select the upper controls and then safely enter the basket and secure their safety harness.

The Terex Tru-Level Tilting Pedestal System is engineered with a high-strength steel bearing plate, heavy-duty hinge points, dual tilt cylinders and holding valves on each tilt cylinder for outstanding durability and performance.

To learn more about the Terex Tru-Level Tilting Pedestal system, as well as other Terex Utilities products and services, visit [www.terexutilities.com](http://www.terexutilities.com).

## About Terex

Terex Corporation is a diversified global manufacturer of a broad range of equipment that is focused on delivering reliable, customer-driven solutions for many applications, including the construction, infrastructure, quarrying, mining, shipping, transportation, refining, energy, utility and manufacturing industries. Terex reports in five business segments: Aerial Work Platforms; Construction; Cranes; Material Handling & Port Solutions; and Materials Processing. Terex offers financial products and services to assist in the acquisition of equipment through Terex Financial Services. More information can be found at [www.terex.com](http://www.terex.com).



ly achieve their automation needs.”

VPS also helps ITWWA’s VTP Palletizers take on more functions. The robotic palletizers can handle each case or SKU differently. VPS communicates to the robots whether cases are lighter or packaged in various materials so they can handle each accordingly. The gentle product handling of the VTP Palletizers is further matched by the fact that the robots eliminate slat dividers and “bump turns.” ITWWA’s scalable systems have the ability to work multiple projects concurrently, are intuitive to use, and provide accurate data back to the warehouse control system. VTP Palletizers are SCF/ISO friendly, category 3 & 4 compliant and incorporate an easy to use graphic interface. ITWWA provides 24/7 customer support with all its products and services.

For general information about ITW Warehouse Automation visit: [www.itwwa.com](http://www.itwwa.com) , or call: 1-828-654-7500.

## Two Utility GPR Systems One Trusted Partner





**EASY  
LOCATOR™**



**X3M™**

A partnership is built upon trust, and the expectation that your partner is as vested in your goals as you are. MALA evaluates the needs of utility professionals at every opportunity and is committed to providing the most technologically advanced Ground Penetrating Radar systems for our customers-or as we say partners.

**EASY  
LOCATOR™**

- ✓ Low Cost
- ✓ Ten Years Proven in the Field
- ✓ GPS and 3D

**X3M™**

- ✓ Four Frequencies Available
- ✓ GPS and 3D Mapping Modes
- ✓ Object Mapper™ GIS Exportable

**Mala GeoScience USA, Inc.**  
 465 Deanna Lane • Charleston, SC 29492  
 Phone: +1 843.852.5021 • Fax: +1 843.284.0684 • [www.malags.com](http://www.malags.com) • [sales.usa@malags.com](mailto:sales.usa@malags.com)



If it's not



it's just  
cold mix.

Be sure you're getting  
**UPM®**, or you'll be back!

Permanent Solution | Cost Efficient | Meets Green Standards



**Unique**  
**Paving Materials**  
Corporation

Permanently Patching Potholes for Over 50 Years.  
Visit our website today to see what goes into making  
UPM the best permanent pavement repair in the industry.  
[www.UniquePavingMaterials.com](http://www.UniquePavingMaterials.com)  
or call 1-800-441-4880

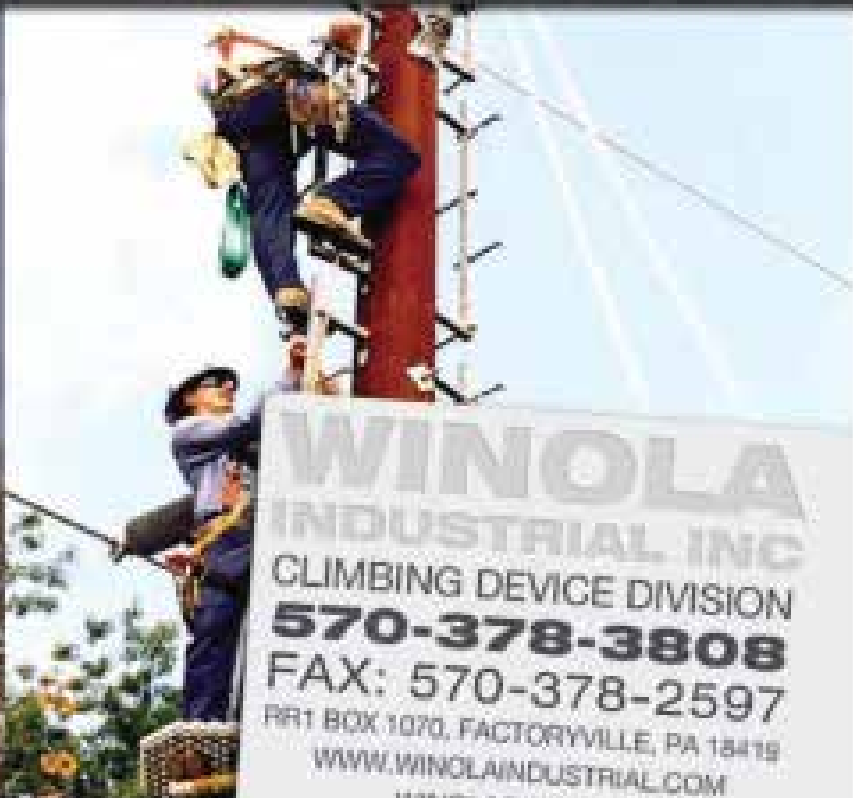




# VMAC Releases

The Ultimate Utility Belt:  
The RAPTAIR-MF Multifunction Diesel Drive

# THE SAFEST WAY TO CLIMB A STEEL POLE IS WITH WINOLA INDUSTRIAL INC.



**WINOLA**  
INDUSTRIAL INC  
CLIMBING DEVICE DIVISION  
**570-378-3808**  
FAX: 570-378-2597  
RR1 BOX 1070, FACTORYVILLE, PA 18845  
[WWW.WINOLAIN INDUSTRIAL.COM](http://WWW.WINOLAIN INDUSTRIAL.COM)  
[WINOLA@PIX.NET](mailto:WINOLA@PIX.NET)



Galvanized  
Weathering Steel  
Pole with Climbers



Basic Device  
for Working  
(steps adjacent)



Basic Climbing  
Device  
(steps staggered  
for climbing)



100%  
Safety  
Tie-offs



Twisted, tapered  
metal flange



Standard Step

Three Feet  
Not Aligned



Four Feet  
Feet are Aligned  
for Easier Climbing

Visit us at: [www.winolaindustrial.com](http://www.winolaindustrial.com)

**OVER 4 MILLION LADDERS PRODUCED SINCE 1971**



# 21<sup>ST</sup> CENTURY FAULT DETECTION

*Energized or Unenergized Cables*



*Arc Chaser*

## 3-IN-ONE DMM/TDR

Digital Multimeter  
Cable Fault Detection  
Detects distance to faults on a cable  
Event Detection  
Checks real time cable condition

## Dual Mode TDR

Cable Fault Detection  
Dynamic Intermittent Testing



*Power Prowler*

SEE THE  
MIRACLES  
OF **SSTDR**

SPREAD SPECTRUM  
TIME-DOMAIN REFLECTOMETRY



MONITOR REAL-TIME  
CHANGES/FAULTS IN ALL  
ELECTRICAL SYSTEMS

[T3Innovation.com](http://T3Innovation.com)



VMAC has released a new show-stopper in their RAPTAIR product line: the RAPTAIR-MF Multifunction Diesel Drive. This totally self-contained unit combines compressed air, an AC generator, welder, battery charger, booster and hydraulic capability with VMAC's trademarked Advanced Digital Controls to produce a one-of-a-kind work solution that will save money and time! In addition, this new system maintains the compact dimensions and lighter weight that is unequalled in the multifunction industry.

Years of product development, industry experience and feedback from VMAC customers culminated in the design of the RAPTAIR-MF. Created specifically for the mobile market, the system delivers a 45CFM and up to 175 PSI and was designed to address concerns about noise, fuel consumption and emissions while providing the ultimate in job site versatility. Utilizing VMAC's state-of-the-art Intelligent Digital Controls, the 100% duty cycle RAPTAIR-MF air compressor turns itself on and off in response to air tool demand, contributing significantly to reduced idling and fuel costs as well as a greener environmental profile while still packing enough muscle to power up to a 60 lb. jackhammer or a 1-1/4" impact wrench.

The system's hydraulic capabilities include a Power Take-off Port SAE 'A' port, 2800RPM output, 35Ft-Lb continuous torque max. The system engine is a KUBOTA Diesel D902 3-cylinder, naturally aspirated 3600 rpm.



**BROWN BRONTOSAURUS MOWERS**

• Land Clearing  
• Maintenance  
• Stump Grinding

Your complete clearing solution

Our job is to help you do your job better!

Inquire at: 1-888-BBRONTO  
or visit  
[www.brownbranta.com](http://www.brownbranta.com)



**ONSPOT**  
THE ORIGINAL  
***Automatic Tire Chains***

WE WOULD LIKE TO TAKE THIS OPPORTUNITY  
TO THANK JUST SOME OF OUR UTILITY  
CUSTOMERS FOR THEIR BUSINESS.

FIRST ENERGY	CON EDISON
CONNECTICUT LIGHT & POWER	NORTHEAST UTILITIES
PRE & O	CABLEVISION
UNITED ILLUMINATING	CHARTER COMMUNICATIONS
PP&L	NYSEB
ORANGE ROCKLAND UTILITIES	NEWFOUNDLAND HYDRO
NASHVILLE ELECTRIC	CLEVELAND UTILITIES
CENTRAL VERMONT PUBLIC SERVICE	NORTH ATTLEBORO ELECTRIC
WESTERN MASS ELECTRIC	JACKSON COUNTY REBC

**AUTOMATIC TIRE CHAINS SINCE 1977**  
1.800.766.7768 [WWW.ONSPOT.COM](http://WWW.ONSPOT.COM)

# SAFETY IS ENGINEERED INTO EVERY TOOL WE MAKE.



Experience, reliability, quality and vision are the foundation of the Cementex brand of double-insulated tools and safety-related products. Our continued use of American tools, fabrics and labor paired with these fundamentals not only sets us apart from the masses but have also established us as the trusted safety tool specialists.

Visit us at: [www.cementexusa.com](http://www.cementexusa.com)

## **Cementex** THE SAFETY TOOL SPECIALISTS

600 WILSONVILLE ROAD • PO BOX 1583 • BURLINGTON, NJ 08016-0583 • TOLL FREE: 800-664-1292  
IN NJ: 609-382-1040 • FAX: 609-382-6883 • [usa@tools.cementexusa.com](mailto:usa@tools.cementexusa.com) • [www.cementexusa.com](http://www.cementexusa.com)

PROVIDING COMPLETE ELECTRICAL SAFETY SOLUTIONS

Tier 4 final compliant. At a mere 570 lbs., the system provides power and versatility in a compact, lightweight package.

To see an overview of the RAPTAIR-MF capabilities, visit our YouTube Channel at <http://www.youtube.com/watch?v=kPR5a0SB6hA>. For more detailed information about the system, including specifications, download the brochure at [http://www.vmac.ca/publicfiles/M200077\\_multifunction\\_web.pdf](http://www.vmac.ca/publicfiles/M200077_multifunction_web.pdf). To find out more about VMAC, VMAC RAPTAIR, VMAC UNDERHOOD and VMAC Hydraulic Air Compressor Systems and Throttles, visit [www.vmacair.com](http://www.vmacair.com) or call 1-800-738-8622.

VMAC is a manufacturer of compact, powerful air compressor systems for the mobile-mechanic, tire service, utilities and construction industries. Specializing in UNDERHOOD, Diesel Driven Stand Alone and Hydraulic Above-Deck Systems, VMAC is credited with developing the lightest and most compact mobile air compressors available in the industry.



**DEFY EXPECTATIONS**  
**Be A Job Site Super Hero!**

New from VMAC:  
The *Ultimate "Utility Belt"...*

**The RAPTAIR Multifunction**

**Includes:**

- ▶ Compressed Air
- ▶ AC Generator
- ▶ Welder
- ▶ Battery Charger
- ▶ Hydraulics
- ▶ with Auto Shutdown

866-369-3728  
[www.vmacair.com/us](http://www.vmacair.com/us)

Visit our YouTube Channel   
[user/vmacair](http://user/vmacair)

**VMAC**  
VEHICLE MOUNTED AIR COMPRESSORS  
**COMPACT. POWERFUL.**



# 60TH ANNUAL Electric Utility Fleet Managers Conference



## 60 Years of Educating Fleet Professionals

**June 2-5, 2012**

Williamsburg Lodge & Conference Center, Williamsburg, Virginia

**Are you a fleet professional looking for an exceptional educational opportunity?**

Attend the industry's premier event for the electric utility fleet industry and find best practices that can benefit your company. At EUFMC 2012 join fleet professionals from over 50 investor owned electric utilities, electric cooperatives and electric contractors from across the U.S., Canada and South America.

- Educational presentations by industry experts, manufacturers and fleets on vehicle, fuel, regulatory and maintenance topics.
- A cross-section of utility equipment demonstration and exhibition of the latest equipment and solutions for utility fleets.
- Roundtables where fleet professionals address common challenges, share best practices and find solutions.

AND MUCH MORE...

*"EUFMC helps fleet professionals make a difference for their communities. The conference offers educational sessions on the most current and important fleet management topics, displays of the industry's latest products and services, and a forum where fleet professionals can exchange ideas that will help them meet the challenges they face everyday in their organizations."*

**GERALD OWENS**  
FLEET Manager  
Southcoast Power Board Delivery

**NAVISTAR®**

**Altec**



**ETI**



*Pro Series*

**Telegis**

**TEREX**

*Dedicated to providing unparalleled value specifically targeted to meet the information needs of utility fleet managers.*

**REGISTER TODAY! (757) 220-1795 • [www.eufmc.com](http://www.eufmc.com)**





Company	Pg.	Website
AJax	9	<a href="http://www.ajaxtoolsandequipment.com">www.ajaxtoolsandequipment.com</a>
Asher	24	<a href="http://www.alasher.com">www.alasher.com</a>
Armlift	11	<a href="http://www.armlift.com">www.armlift.com</a>
Brown Bronto	20	<a href="http://www.brownbronto.com">www.brownbronto.com</a>
California Turbo, Inc.	10	<a href="http://www.californiaturbo.com">www.californiaturbo.com</a>
Cementex	21	<a href="http://www.cementexusa.com">www.cementexusa.com</a>
Dee Zee	7	<a href="http://www.deezee.com">www.deezee.com</a>
Dur-A-Lift, Inc.	IFC	<a href="http://www.dur-a-lift.com">www.dur-a-lift.com</a>
EUCMC	23	<a href="http://www.eufmc.com">www.eufmc.com</a>
Hioki USA	5	<a href="http://www.hiokiusa.com">www.hiokiusa.com</a>
Jeffrey Machine, Inc.	1	<a href="http://www.jeffreymachine.com">www.jeffreymachine.com</a>
Mala GeoScience	14	<a href="http://www.malags.com">www.malags.com</a>
Onspot	20	<a href="http://www.onspot.com">www.onspot.com</a>
Pengo	BC	<a href="http://www.pengoattachments.com">www.pengoattachments.com</a>
Rammount	IBC	<a href="http://www.ram-mount.com">www.ram-mount.com</a>
Roose Mfg.	24	<a href="http://www.roosemfg.com">www.roosemfg.com</a>
T3 Innovations	19	<a href="http://www.t3innovations.com">www.t3innovations.com</a>
Terex	12,13	<a href="http://www.terexutilities.com">www.terexutilities.com</a>
Unique Paving	15	<a href="http://www.uniquepavingmaterials.com">www.uniquepavingmaterials.com</a>
Winola	18	<a href="http://www.winolaindustrial.com">www.winolaindustrial.com</a>

**ASHER** SINCE 1914 **Contract - Heavy Repair - Underpinning**  
**Cable Pulling & Tensioning Trailers**  
**Design - Service - Nationwide Division**

#1658-M Sherman Rally UnderCarg    #1658-M Hugg/Davis 805    #1288-M Standard 3-Reel Trailer

**(323) 314-3515**  
**www.alasher.com**  
 Los Angeles, CA    [alashersince1914@gmail.com](mailto:alashersince1914@gmail.com)

**ROOSE MFG. CO.**  
**Cable Trailers**

2000-14000 #cap.  
 2-3 Reel Roll-In

**800-552-3276 • www.roosemfg.com**



# RAM® VEHICLE MOUNTING SYSTEMS

**\$175.00**  
FROM



Powered Dock For  
The GETAC B300



Tablet Mounts



Printer Mounts



Universal Laptop  
Tray

## Why Choose RAM Vehicle Mounts over other mounting systems?

- Shock and vibration protection
- Low cost
- Military endorsed
- Available in metal or composite
- Large selection of no-drill-vehicle bases
- Ease of installation and use
- Proven ball and socket designs
- First patented molded dock for laptops in vehicle applications
- Patented ergonomic designed docks for safety
- State of the art form and function
- Unmatched quality
- Made in USA
- Lifetime warranty



**Tough-Box™ Console Mounts**



**JUST RAM IT!**

Sold Through Dealers. Re-Seller Programs Available

1-800-497-7479  
[WWW.RAM-MOUNT.COM](http://WWW.RAM-MOUNT.COM)



## TURNING CHALLENGES INTO SOLUTIONS!



### THE ALL NEW UTILITY SERIES ROCK RIPPER® AUGER

All aspects of the Utility Series Rock Ripper® have been improved with the new design. Considerable attention has been paid in order to improve drilling rates and reduce vibration. The redesigned progressive-style Rock Ripper® allows the auger to "bite" into the rock which reduces the vibration while it increases drilling production.

The distinct attack angles paired with the STRATA™ series SR-75SW carbide drilling grade teeth are designed to cut through the rock. The Utility Series Rock Ripper® is the auger to use for your utility rock drilling projects.



## DIGGER DERRICK & PRESSURE DIGGER AUGERS

PENGO is the largest manufacturer of augers and related wear parts in the world, serving the utility, construction, agriculture, foundation, and major worldwide OEM customers. Our products are available through a network of over 500 dealers and OEM's. Call today for one near you!

STRATA series tools are designed to withstand the toughest drilling conditions and provide the highest return on investment. All STRATA series tools use a proprietary grade carbide developed specifically for vertical drilling applications. This attention to high quality uniformity ensures each STRATA tool has:

- Better high temperature wear resistance.
- Consistent wear characteristics in vertical drilling applications.
- Longer service life, which means more up-time and fewer tool changes.

All STRATA conical tools are manufactured in the USA!

**STRATA**  
WILL BE THERE WHEN YOU NEED IT



**YOU HAVE CHALLENGES. WE HAVE SOLUTIONS!**



[www.pengoattachments.com](http://www.pengoattachments.com)

800.599.0211 | 712.845.2540 | FAX 800.915.6904

Division of  
**IES** | INTERNAL SEAL  
EQUIPMENT  
SOLUTIONS  
[www.iesholdings.com](http://www.iesholdings.com)

COPYRIGHT PENGO CORPORATION © 2011. CONTACT PENGO@IESPENGODRILLING.COM