

December 2014

THE UTILITYSOURCE

Products and Services for Today's Electric, Telecom, and CATV Utilities

**New Bobcat T450 Loader
Features Tier 4 non-DPF
Emissions Solution, Ideal
for Working in Tight Areas**

**Little Beaver Auger Blades
and Points Cut Through
Maintenance Costs and
Time**

Ditch Witch RT45 Trencher



POWER. HARNESSSED.

MSA's premium EVOTED™ Arc Flash-Rated Harness provides outstanding arc flash protection for utility construction crews and maintenance workers. Its rugged design looks good on the job and is 20% lighter than competing harnesses. With a 100% level of safety, the EVOTED Harness is fire resistant, so it maintains performance in the event of a full arc flash event.

MSA's Workfront™ Arc Flash-Rated Harness is also excellent arc flash protection in a sleek, black design that's lightweight and comfortable. The high strength rope is as good to the touch as it is strong, with no burn or abrasion in the event of a fall. The Workfront Arc Flash Harness is a comfortable option for safety managers and contractors who need to communicate the latest electrical equipment with their workforce.

Learn more at MSAsafely.com/ArcFlash

FALL PROTECTION SOLUTIONS



©2014 MSA



North America's Largest Used Bucket Truck Dealer

Used Bucket Trucks...and a whole lot more!

Bucket Trucks • Digger Derrick Trucks • Forestry Trucks
Grapple Trucks • Boom Trucks • Utility Trucks

200,000 Mile Extended Warranties Available*

Quality Reconditioned Trucks You Can TRUST!

Nationwide Delivery & Financing Available*



Call or Visit Now!

888-949-3701

www.i80equipment.com

* Certain restrictions apply. Ask your sales rep for details.

PG 4 New From Terex

PG 8 Ditch Witch Offers New Purchasing Options

PG 12 Bobcat T450 Loader Features Tier 4 non- DPF Emissions Solution, Ideal for Working in Tight Areas

PG 20 Little Beaver Auger Blades and Points Cut Through Maintenance Costs and Time

PG 24 Stanley Introduces Point and Click Measuring with New Bluetooth Laser Distance Measurer

PG 28 Ditch Witch Launches New Equipment

PG 32 Ad Index

GROUP PUBLISHER

Brandon Greenhill
 205-733-4343
 brandon@tipsmag.net

ASSOCIATE GROUP PUBLISHER

Rick Harless
 205-382-618
 rick@handfmedia.net

NATIONAL SALES MANAGER

Dave Gomez
 205-358-7913
 david@handfmedia.net

EDITOR/ WEB DIRECTOR

Danny Thompson
 danny@handfmedia.net

CREATIVE DIRECTOR

Jacklyn Greenhill
 jacklyn@handfmedia.net

ADMINISTRATIVE DIRECTOR

Steven Hobson
 steven@tipsmag.net

CEO

Christy Hobson

PRESIDENT

Glen Hobson

CONDEX

APS 75
HYDRAULIC UNDERGROUND PULLING TRAILER
 AVAILABLE WITH AND WITHOUT
AIR COMPRESSOR & HYDRAULIC JACES

- ✓ 7,500 LBS OF PULL FORCE
- ✓ 2,500 FT OF ANTI-TWIST ROPE
- ✓ EASY TO OPERATE INSTRUMENT PANEL
- ✓ INSULATED FOR NOISE SUPPRESSION

344 HINGWOOD DRIVE | BIRMINGHAM, AL 35204 | 205.204.2077 | WWW.CONDEX.COM



Executive and Advertising Offices
 951 1st Ave. W.
 Alabaster, AL 35007
 phone: 205-624-3354 fax: 205-624-3354
 www.theutilitysource.net
 glen@tipsmag.net

The Utility Source™ is published twelve times a year on a monthly basis by H&F Media Group, Inc., 951 1st Ave. W. Alabaster, AL 35007 USA. The Utility Source™ is distributed free to qualified subscribers. Non-qualified subscription rates are \$57.00 per year in the U.S. and Canada and \$84.00 per year for foreign subscribers (surface mail). U.S. Postage paid at Birmingham, Alabama and additional mailing offices.

The Utility Source™ is distributed to qualified owners and managers in the industrial industry. Publisher is not liable for all content (including editorial and illustrations provided by advertisers) of advertisements published and does not accept responsibility for any claims made against the publisher. It is the advertiser's or agency's responsibility to obtain appropriate releases on any item or individuals pictured in an advertisement. Reproduction of this magazine in whole or in part is prohibited without prior written permission from the publisher.

POSTMASTER: Send address changes to
 H&F Media Group, Inc., P.O. Box 1568
 Pelham, AL 35124
 PRINTED IN THE USA

AjaxTools&Equipment



Vermeer F900 Excavator



Sherman Reilly 35' Neoprene Lined Trailers



Sherman Reilly Under Dwg Puller



TSE DPT60 6000lb Puller



Valley Tool 4 Reel Trailer



TSE Underground Cable Puller



Ford F650 with Reel Lift & Carrier



TSE Underground Cable Puller



Visit our website for full descriptions

P.O. Box 518 • Orland, California

(530) 865-4405 • (800) 532-2529

www.ajaxtoolsandequipment.com

New from Terex

Terex® Cobra-Style Jib Offers Unique Features, Ease of Use

Terex now offers a new end-mount or top-mount cobra-style jib on its popular Hi-Ranger™ TL and LTM series aerial devices. Available on all 24-in x 48-in platforms, the Terex® cobra-style jib is engineered with hydraulic articulation and extend, enabling operators to achieve a greater range of motion and increased productivity.

The cobra-style jib boasts a low, 16-in profile, as well as a 600-lb platform capacity and 1,000-lb maximum lift capacity, which can be realized with the work line extended farther from the basket shaft than other jibs allow. Operators can easily rotate the cobra-style jib thanks to an additional bearing at the bottom of the jib. This rotation offers linemen more versatility at the pole, enabling them to easily line up with work as needed. It also offers better accessibility between lines. This additional bearing rests on top of the Kingpost socket, which is attached to the jib and is situated on the left of the leveling bracket so that it does not interfere with work. Composite bushings are incorporated into the cobra-style jib's design to help reduce wear on the Kingpost socket.

This new jib also incorporates a poppet valve feature, which helps enhance safe work practices because it prevents the unit from damaging itself during operation. The valve will instantaneously shut off various functions if the rear of the jib makes contact with the fiberglass boom.

The new Terex cobra-style jib quickly retracts and conveniently stows out of the way. With the jib in stowed position, the truck's boom can still utilize its full range of motion, down to -40 degrees.

Terex Unveils New Swing Arm Option for Hi-Ranger™ TL Series Aerial Devices

The Terex® Hi-Ranger™ Swing Arm option is a new option to increase the platform's range of motion for the company's popular TL series aerial devices. The Swing Arm option incorporates the popular Terex articulating, telescopic boom design with an additional platform arm that can rotate 215 degrees, in addition to the 180-degree platform rotator. This feature makes it possible for operators to reach both sides of the utility pole without having to

reposition the truck, thus expanding the truck's work area and increasing access from a one truck set-up.

A platform lifter feature on the Swing Arm option enables operators to raise and lower the platform an additional 20 in of working height. By being able to rotate the jib plus rotate the platform, the Terex Swing Arm can wrap around the utility pole, allowing the operator to extend their reach and do all the jobs at the top of the pole from a one truck set-up. This feature enables operators to reach around the utility pole to complete a task, like changing out transformers, by simply swinging the bucket around and continuing to work the back side of the pole.

Achieving a working height of 56.8 ft, Terex TL aerial trucks boast -40 to 76 degrees of upper boom travel, 42.3 ft of horizontal (side) reach and 0 to 87 degrees of lower boom travel. These units also have a 51.2 ft bottom of platform height and can achieve a maximum jib capacity of 1,080 lb.

The Terex TL series of utility trucks are engineered to let operators access the platform from the ground, to load tools and equipment, and comes standard with a 485-lb capacity, end-mounted, two-person operator's platform.

Other features incorporated into the design of the Terex TL series with Swing Arm option are a hydraulic generator with battery backup that allows electric power to the radio-controlled upper boom controls. Also, these trucks have a hydraulic platform leveling system, full-pressure, opencenter hydraulic system, dual hydraulic tool outlets with flow control and continuous unrestricted worm gear rotation. The Terex TL series





PELSUE®

TRADITION+INNOVATION

Toll Free 1-644-TAPELSUE • Fax 303-934-5301
sales@pelsue.com • www.vehicleupfit.com

Vehicle Upfitting for:

- Confined Space Service
- Mobile Command Center
- Mobile Lab
- Fiber Optic/Copper Splicing

whatever your needs are,
Pelsue's vehicles and trailers
is the answer for your fleet
needs.



High-Roof Vans



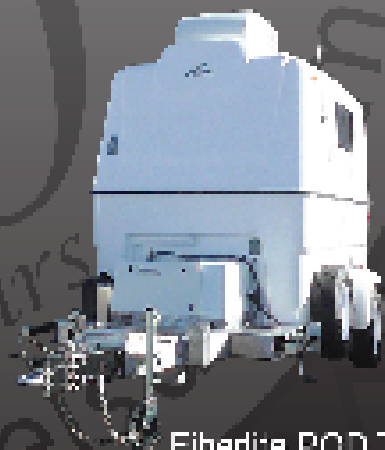
Cargo Vans



Truck Chassis



Fiberlite XL Trailer



Fiberlite POD Trailer

years
www.pelsue.com

aerial devices have a Category "B" rating per ANSI A92.2.

Terex® XT Pro Tree Trimmer Series Are a Cut Above

The completely redesigned Terex® XT Pro Series Tree Trimmer trucks are designed to meet the unique jobsite needs of tree care professionals. These new overcenter aerial devices have the same features that made the company's previous tree trimmers so popular — simple, reliable operation, low maintenance and lightweight design. The XT Pro Series tree trimmers also boast a host of new features, including a longitudinal hydraulic lift option to provide up to 75 ft (22.9 m) of working height, upper boom articulation of 250° and 125° of lower boom articulation, to further extend these aerial devices' capacities and capabilities.

Extensive user interviews were conducted throughout all aspects of the design process so all three models in the new XT Series Pro tree trimmers share common user friendly design elements, including round pedestals for easier access to bearing bolts, a platform capacity of up to 400 lb (181 kg) to accommodate one person plus tools and an elbow cylinder that is fully retracted when stored, decreasing exposure to the elements. The compact longitudinal lift on these models is lighter and shorter than its predecessors, and the new design accommodates an 11-ft (3.35 m) chipbox so there is no reduction in chip storage space.

A unique feature of the XT Pro tree trimmer is a control system that senses what hydraulic flow is needed to move the boom to

a new position without having to disengage the tool circuit. This feature allows the operator to concentrate on the task at hand without having to manually manage hydraulic flow between the controls and tools. This new control system is designed to save the operator both time and effort throughout the course of the working day.

A new boom tip on the XT Series Pro models reduces the overall weight of the machines. It is also manufactured with durable covers over all-steel components to hold up over time against environmental elements. Because of the way these tree trimmers are engineered, these models have the capability to mount a 75-ft (22.9 m) unit on a 13,200 lb (5,987 kg) front axle chassis.

News ReleaseThe XT Pro 56 model has a 56-ft (17 m) bottom of platform height. This unit offers a 61-ft (18.6 m) working height, a 45.6-ft (13.9 m) overcenter side reach and a 41.5-ft (12.6 m) non-overcenter side reach.

The XT Pro 60 aerial device has a 60-ft (18.3 m) bottom of platform height. This tree trimmer achieves 65-ft (19.8 m) of working height, 49.9-ft (15.2 m) of overcenter side reach and 45-ft (13.7 m) of non-overcenter side reach.

The XT Pro 60/70 tree trimmer has a 70-ft (21.3 m) bottom of platform height. It boasts 75-ft (22.9 m) of working height, 49.9-ft (15.2 m) of overcenter side reach and 45-ft (13.7 m) of nonovercenter side reach.

www.terexutilities.com ■

Get Cool!

Extend transformer life!

Increase transformer capacity up to 166%!

- expert technical assistance
- large inventory
- low sound levels
- one-piece cast aluminum blades
- energy-efficient motors
- galvanized or stainless steel guards

KRENZ-VENT
quality engineered, performance tested

www.krenzvent.com

Weather Resistant Solid Brass Padlocks

Made to your specifications in the U.S.A.

HERCULOCK
HERCULES INDUSTRIES, INC.

HERCULES INDUSTRIES, INC.
Manufacturer of **HERCULOCK** Padlocks
P.O. Box 197 • Prospect, Ohio 43342
Toll Free: 1-800-345-2590
Fax: (740) 494-2274
www.HERCULOCK.com

SPECIALIZED CUSTOMER-DRIVEN SOLUTIONS.



Dur-A-Lift, Inc. manufactures telescoping and articulating aerial personnel and material handling lifts for many needs. Dur-A-Lift's experience, quality & dependability shows in every product that leaves the factory. We pride ourselves on unsurpassed service both during, and after the sale.

At Dur-A-Lift we base our success on our customer's successes. By fostering mutually beneficial relationships with our customers on a personal level, we gain the ability to truly understand their needs. Call us today and let us put our experience, quality, dependability & service to work for you!

EXPERIENCE. QUALITY. DEPENDABILITY & SERVICE.

DUR-A-LIFT®



www.facebook.com/pages/Dur-A-Lift-Inc/282794072750558

PO Box 20, Georgia, IA 51227 • Toll Free: 1 877 4 DURALIFT • www.dur-a-lift.com

WERE ON FACEBOOK!

[HTTP://WWW.FACEBOOK.COM/THEUTILITYSOURCE](http://www.facebook.com/theutilitysource)

A hand is shown from the bottom, with the index finger pointing upwards towards a central button. The button is rectangular with rounded corners and a white border, containing the word "Like" in a bold, blue, sans-serif font. The background is a dark gray gradient, and several white-outlined squares of various sizes are scattered around the hand and button, some overlapping. The overall composition is centered and clean.

Like

WELCOME TO THE NEW AGE OF TECHNOLOGY



wireless

Hioki LR8410-20 Wireless Bluetooth Datalogger Station



- Up to 105 Channels
- Recording Speed as fast as 100 ms
- Easy to Use
- Multiple Measurement Types - VOLTAGE, THERMOCOUPLE, RESISTANCE, HUMIDITY
- Bluetooth® range up to 100 feet

Producing High Quality Products Since 1935

HIOKI

2000 HIRAKAWA 1-CHOME FUKUOKA 815-0292 JAPAN
PHONE: 800.409.9100
FAX: 800.409.9100
www.hiokiusa.com



ISO 9001
ISO 14001

Ditch Witch Offers Equipment Financing and Leasing Options for Underground Construction Professionals

The Ditch Witch organization is providing a wide range of financing and leasing options to underground construction operators seeking to acquire labor-saving underground equipment. The options are made available through Ditch Witch Financial Services, a full-service provider that aims to make the acquisition of Ditch Witch equipment easier.

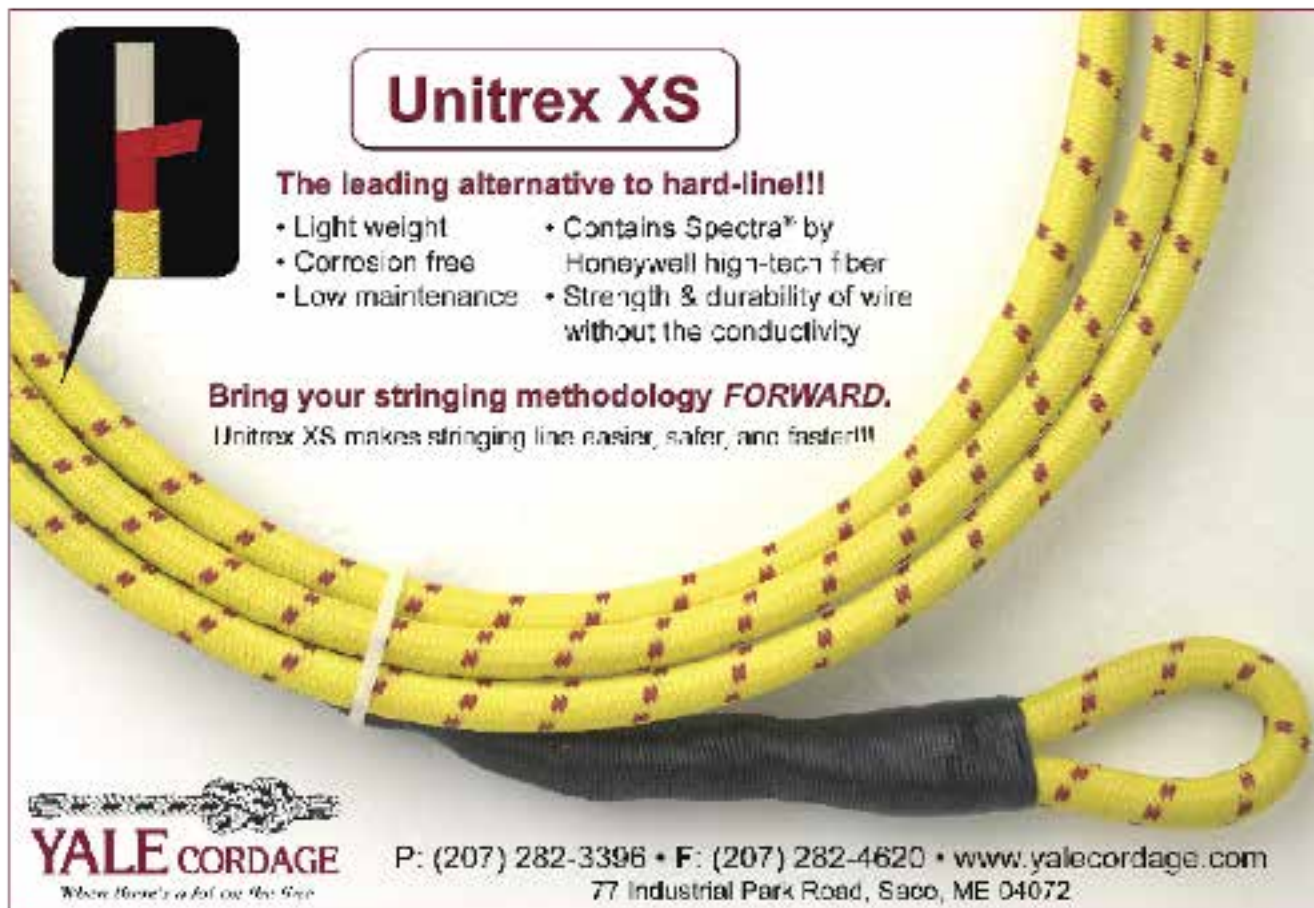
Ditch Witch Financial Services currently offers 2.9 percent financing for 48 months on the Ditch Witch vacuum-excitation and directional-drill equipment lines, excluding the JT100 All Terrain, and low monthly payments on the same equipment through a high-residual lease program. Underground construction professionals can also receive no payments or interest for 120 days, or six months at 0 percent level payments, using a special Underground Advantage® credit card program.

“Our goal is to make work easier for our customers in the field – and they recognize us for that,” said Ed MacGregor,

Director of Dealer and Customer Finance, the Ditch Witch organization. “We build on that reputation by making the equipment-acquisition process easier. Ditch Witch is a world leader in underground construction, and our finance professionals use that experience to help identify the right financial program for each customer.”

Ditch Witch Financial Services financing options include conventional monthly payment plans, skip-payment plans, accelerated-payment programs, rent-to-own plans and automatic payment plans. Leasing options include capital or operating leases, and fixed-dollar and fair-market-value purchase options, which are customized to the individual customer.

Construction professionals can contact Ditch Witch Financial Services for more information on financing options at 1-800-654-6481 or www.ditchwitch.com/financing. ■



Unitrex XS

The leading alternative to hard-line!!!

- Light weight
- Corrosion free
- Low maintenance
- Contains Spectra® by Honeywell high-tech fiber
- Strength & durability of wire without the conductivity

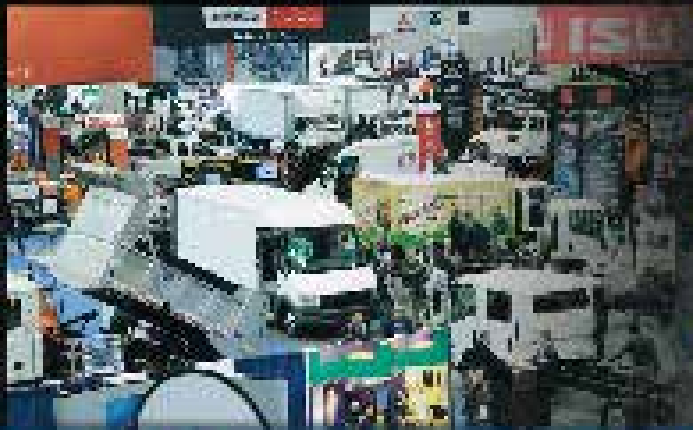
Bring your stringing methodology FORWARD.
Unitrex XS makes stringing line easier, safer, and faster!!!

YALE CORDAGE
When there's a job on the job

P: (207) 282-3396 • F: (207) 282-4620 • www.yalecordage.com
77 Industrial Park Road, Saco, ME 04072

**THE
WORK
TRUCK
SHOW**
2015

Your Truck Fleet Keeping You Awake at Night?



- Are you getting the best return for your equipment dollars?
- Can new technology and equipment maximize your fleet's productivity?
- Looking for better ways to control your maintenance, fuel and operating costs?
- Is your truck fleet advancing your commitment to customers?

**We Know Your Challenges.
We Know Your Business.**



Work Truck Show March 4-6, 2015 | Indianapolis, IN
Educational Sessions Begin March 3

**Find Your Answers.
Visit WorkTruckShow.com**



The Future of Clean Trucks and Solutions
March 3-4, 2015

Held in conjunction with
The Work Truck Show 2015

- Results and Insights on Fleet Deployment of Green Technology
- Government Regulatory and Funding Updates
- New Developments in Alternative Fuel and Productivity Technology



Serving the Industry Since 1964



New Bobcat T450 Loader Features Tier 4 non-DPF Emissions Solution, Ideal for Working in Tight Areas

Due to popular demand for a compact track loader in the 400 frame size, Bobcat Company has introduced the new T450. The Bobcat® T450 reintroduces a compact track loader platform size that has not been available from Bobcat Company in recent years. In addition to M-Series enhancements and engine innovations, the T450 features more horsepower, higher auxiliary pressures, lower ground pressure and increased travel speed when equipped with the optional two-speed drive system.

With a width of just 56 inches when paired with a bucket, the T450 is well-suited for accessing and working in tight jobsites, often replacing tasks previously done with manual labor and tools. The machine's rubber track undercarriage minimizes ground disturbance — just 4.7 pounds per square inch — to established surfaces for fewer repairs when a project is complete.

The T450 loader features a radius lift path, providing operators with good reach and visibility. An optional

enclosed cab with heat and air conditioning is available for improved operator comfort. Air conditioning is a new option for this size of Bobcat compact track loaders. Also available for the first time in a Bobcat compact track loader this size, a two-speed drive system provides faster travel when desired — with a maximum speed of 7.3 mph in low range and 11 mph in high range.

The T450 joins the M-Series compact track loader line, which includes the T550, T590, T630, T650, T750, T770 and T870 compact track loaders. All M-Series loaders share features such as improved power and performance, good all-around visibility and outstanding operator comfort.

Multiple Engine Advancements

The 2.4-liter Bobcat engine in the T450 features a non-diesel particulate filter (non-DPF) engine solution. The Tier 4 non-DPF solution was achieved by designing

UTILITY METALS

Manufacturing products
you can look up to!



- UTILITY METALS...
Manufacturers of Quality:
- Area Lighting Poles
 - Lighting Brackets
 - Traffic Sign Structures
 - Traffic Signal Structures
 - Custom Manufacturing



New
"In-Stock" Product

- 4" Square Steel Pole
- 20 ft. Long
- Powder Coated Dark Bronze

In stock locations:
• Sparks, NV
• Malvern, PA

UTILITY METALS

A Division of Fabricated Metals LLC.

P.O. BOX 9054

LOUISVILLE, KY 40209

800•627•8276

502•363•6681

Fax: 502•368•2656

UTILITY
METALS



Made in U.S.A.

an ultra-low particulate combustion (ULPC) engine. A specially designed engine combustion chamber significantly reduces the amounts of particulate matter. Therefore, Tier 4 emissions compliance can be achieved without using a DPF. In addition to eliminating the need for a DPF, the new engine used in the T450 compact track loader has more horsepower and increased torque. This increase is produced over a wide range of engine rpm, allowing operators of all skill levels to better utilize the machines' maximum performance.

For over a decade, Bobcat loaders have been equipped with standard machine shutdown protection that monitors engine and hydraulic functions. Bobcat Company continues to improve these investment-saving features for its customers. Prior to the new Bobcat engine, engine coolant and hydraulic oil temperatures were monitored. If these functions fell outside of their normal operating ranges, the system alerted the operator and shut down the machine to prevent catastrophic damage.

With the new Bobcat engines, machine shutdown is still included when needed. However, instead of shutdown being the only solution, the system monitors coolant and oil temperatures and manages the engine to prevent them from reaching a point where the machine must be shut down. This helps to prevent engine damage, minimizes

engine wear and keeps operators working.

Another new feature of the Bobcat compact track loader line is cold weather protection. Anytime the engine temperature is too low, the loader will temporarily limit the maximum engine speed (rpm) to prevent premature component wear or failure. Engine idle speed is also raised slightly to help the engine reach its operating temperature faster. As soon as the engine warms up to a predetermined temperature, the protection mechanism will deactivate.

Improved Performance

The Bobcat T450 has increased hydraulic performance, enabling it to efficiently accomplish more work. The hydraulic systems on M-Series loaders have been designed for higher pressure — 3,300 psi — which provides increased attachment performance.

Hydraulic flow and engine horsepower are matched to the loader's rated operating capacity, size and weight — producing a loader that can outperform higher-horsepower compact loaders. The T450 is a 61-horsepower machine — which represents a 25 percent increase in horsepower over the loader it replaces. The T450 also stands out from other loader brands with its faster dump

STEELMAN INDUSTRIES, INC.

Built to last since 1957!

Rotary Phase Converters

- Provides 3-Phase Power When On y Single Phase Service is Available
- Single or Multi-Motor Applications
- Available in Indoor (ODP) and Outdoor (TEFC) Models





Steelman Industries, Inc.
2800 Hwy. 135 (P.O. Box 1461)
Kilgore, TX 75662
800.337.5827 • 903.984.1384 fax
www.steelman.com

heat wagon

Safe Tough Reliable

Ductable Blowers 



- 2900 CFM
- Explosion Proof
- Class 1 Group D
- Hazardous Location
- Ductable to 100'



- 4700 CFM
- Ductable to 50'

Air Movers 



- 5000 CFM
- 20"D x 23"W x 27"H

Electric Heaters 



- 18/12 KW (65,000 BTU)
- 100° Temp Rise
- (Available in 240V-Single or 3 Phase)

www.heatwagon.com • 888-432-8924

YOU CAN'T BE EVERYWHERE AT ONCE, WE CAN.

RECONYX High Definition motion activated security cameras do not require separate lines for power or communication. Extremely easy to deploy and hide, (5.5" x 4.5") our cameras provide near instant notification of an intrusion by transmitting images via the cellular network directly to your cell phone or computer.

General Surveillance and License Plate Capture models available. Visit our website for more information.

RECONYX Security Series Cameras,

See What You've Been Missing...



PHONE 866-493-6064

RECONYX
SEE WHAT YOU'VE BEEN MISSING...

WWW.RECONYX.COM

and rollback cycle times and higher lift and tilt cylinder forces.

Cab Innovations

The T450 features a unique cab-forward design that moves the operator closer to the attachment and provides unmatched visibility in all directions. The new loader has the largest cab door opening on the market for easy entry and exit, offering superior visibility to the cutting edge of the bucket and the corners of an attachment.

Windows on the sides and rear of the cab are larger to provide more visibility to the tracks and back of the machine. The larger top window makes it easier and more comfortable for the operator to see an attachment with the lift arms raised, an advantage when loading trucks or performing other tasks.

An optional deluxe instrumentation panel monitors key loader functions — including fuel consumption — and the keyless start helps prevent equipment theft. The 5-inch, full-color LCD screen offers better readability and operator interaction. Easy-to-read virtual sweep gauges allow operators to quickly read and understand the machine's performance.

T450 owners may choose between standard foot pedal and hand lever controls, the Advanced Control System (ACS) or the optional Selectable Joystick Controls (SJC).

Increased Uptime

Uptime protections on the new loader are similar to other M-Series models: efficient machine cooling; solid steel tailgate; and improved tie downs. A specially designed rear bumper extends past the tailgate to protect the T450 from obstacles — and related scrapes and bumps — on the worksite. The T450 is designed to work long hours on demanding jobsites with minimal time needed for routine maintenance. Simple checks and superior design make it easier to access systems and perform maintenance correctly at the proper intervals.

The T450 also features the hydraulically powered Bobcat SmartFAN. The cooling system draws cool, clean air from above and directs it out through two side vents. The radiator and hydraulic oil cooler are located above the engine, well-protected between the frame uprights yet easily maintained.

An open undercarriage design, constant tension drive belt, protected quick coupler, and improved tie downs are also new features to help increase uptime protection when operating the T450. ■

RockHound
ATTACHMENTS

DEFENDER
COMPACT FORESTRY CUTTER

CALL 800-426-5615
WWW.ROCKHOUND.COM FOR A DEALER NEAR YOU...



Towmaster's Hydraulic Tail trailer has quality features built to stringent Towmaster specs. It features a T1 steel large outer frame design with the axles attached to a sub-frame and junior I-Beam cross members to tie it all together. This trailer includes a hydraulic operated two-piece bed with a low load angle for hauling low ground clearance types equipment. An optional hydraulic deck ramp allows equipment to be loaded onto the 8-foot top deck. A hydraulic winch can be installed to pull equipment onto the deck.

The hydraulic operated front-end tail design features a diamond plate metal approach with wood ramps to aid in loading. Spare pockets and tie-securing parking screws are standard equipment.

Driver's side controls make it easy to operate the functions. All lights on the trailer are long-lasting LEDs and the trailer is finished with two-component, chemically-resistant, polyurethane primer and top coat.

More information can be found at www.towmaster.com or call Towmaster at 800-462-4677.

AMERICA'S BEST TRAILERS



Towmaster is the trusted brand for auto, construction and equipment hauling. Recognized Limited Lifetime Frame Warranty. 20 years. Same deal. Copying a Towmaster trailer is a sound investment. Visit www.towmaster.com trailers. Towmaster.

BUILT THE WAY YOU NEED THEM



DROP-DECK TRAILERS • TILT BEDS • DECK-OVER TRAILERS • GOOSENECKS • LOWBOYS • HYDRAULIC TAIL
MORE MODELS • MORE OPTIONS • MORE CHOICES

DOWNLOAD OUR NEW APP!

Download the Towmaster "Go Away" app on the App Store or Google Play Store



TOWMASTER.COM





Increase your knowledge and build your skills with UCT's exclusive, professional conference. The dynamic educational program will help you understand the new technologies and products displayed in the exhibit hall and stay on top of the latest safety, regulatory and operational issues that are impacting the way you do business.

LEARN

Jan. 25-30, 2015
George R. Brown Convention Center
Houston, TX

10

Pre and Post UCT training courses offer industry certification

14

Primary UCT program tracks will help you find the sessions that are most relevant for your business

90

Information-packed UCT courses qualify for CEUs and PDHs

NETWORK

Jan. 27-29, 2015
George R. Brown Convention Center
Houston, TX

2,500

Network with 2,500+ attendees from a cross-section of the industry

200

See equipment and technologies from nearly 200 companies on the UCT exhibit floor

3

Source everything you need in the underground utility pipe industry in 3 days during 1 business trip

UCT – the total source for the underground construction market.



Underground Construction Technology
International Conference & Exhibition

January 27-29, 2015
Houston, TX

View the program and exhibitor list at uctonline.com



America's Trench Box Builder™

Efficiency Production, Inc.



The Contractor's Choice for Trench Boxes and Slide Rail

- Largest selection of trench shielding and shoring, and PREMIER Slide Rail System
- Custom trench shields built to your specs
- Site-Specific Engineering
- Supported by Efficiency Production's **Special Operations Shoring Division**; the nation's most experienced team of Slide Rail experts and installers



Steel Trench Box



Hydraulic Shores



Build-A-Box™



Aluminum Shield



Stone Mizer®



Slide Rail System

Toll Free for Factory-Direct Sales & Rentals or your local dealer

800-552-8800

www.usatrenchboxbuilder.com

EFFICIENCY
PRODUCTION, INC.
America's Trench Box Builder™

Little Beaver Auger Blades and Points Cut Through Maintenance Costs and Time



Matching the ideal point and blade to the specific soil type minimizes premature wear, maintenance costs and labor. Unlike many manufacturers that make one auger blade, Little Beaver manufactures a variety of augers, points, and blades designed to optimize their ability to cut through specific soil profiles.

Little Beaver's replaceable blades and points mount on the company's regular and heavy-duty snap-on augers with ease. They protect the augers from wear while drilling in soils that range from loamy soil to compacted rock.

"We want to keep our customers drilling," said Little Beaver Sales and Marketing Manager Mike Hale. "We designed our blades and points for simple replacement on our signature snap-on augers so operators can focus on digging and quickly change out parts when they become dull or worn."

The standard blades and points come with every Little Beaver snap-on auger. They fasten to the auger with two steel bolts, and operators can remove the bolts with a common adjustable wrench. The standard blades and points are ideally suited for loamy soils or areas with few rocks. They are made with cold-rolled steel and hard surfacing to their edges. With these blades and points, the augers can drill more than 100 holes in prime soil conditions before servicing is needed.

Smaller-diameter augers – 1-1/2-inch, 2-inch and 3-inch – use standard points that simply screw or pin on.

For dense soils, Little Beaver's exclusive carbide blades fasten to the bottom of the snap-on augers, similar to the standard auger points, and cut hard clay and frozen ground into smaller pieces. "Some operators may keep both the standard and carbide blades on hand if they will be moving to multiple sites with the earth drills," Hale said. "Having both sets allow them to dig holes in a wide

range of soil conditions and helps prolong the work life of the blades and augers."

For the most challenging soil formations, Little Beaver's line of heavy-duty snap-on augers use specially designed, heavy-duty steel and carbide blades and tips for abrasive soils and compacted rock. They lock into the larger-diameter augers with rubber locks to form a tight wedge fit, so they cut through difficult soil formations without coming loose from the auger.

About Little Beaver Inc.

Little Beaver has been proudly manufacturing quality, safe and productive drilling equipment for three generations. With a full line of easy-to-operate equipment, along with a complete offering of accessories, including augers, extensions, points and blades, Little Beaver effectively serves the needs of end-users from professional contractors to rental centers. For more information: Little Beaver, 2009 South Houston, Livingston, TX 77351; 800-227-7515; fax 936-327-4025; sales@littlebeaver.com; www.littlebeaver.com. ■



PATENT PENDING

EZ OIL DRAIN VALVE™



REMOVABLE
HOSE END

- REPLACES YOUR EXISTING DRAIN PLUG
- JUST TURN THE LEVER TO DRAIN OIL

THE EASIEST OIL CHANGE

Optional Hose Connections



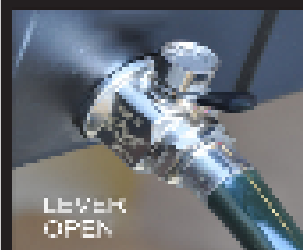
LEVER
CLOSED

ATTACH THE
REMOVABLE
HOSE END



LEVER
CLOSED

CONNECT A HOSE



LEVER
OPEN

OPEN THE LEVER
TO DRAIN OIL



STRAIGHT HOSE END



L-SHAPED HOSE END

For Heavy Duty Trucks and Buses, contact the following distributors:

NORTHWEST
Wesrep Sales Co.
(253)851-9099

ROCKY MOUNTAIN
TEWCO, INC.
(800)558-8730

NORTH CENTRAL
TEWCO, INC.
(800)558-8730

NORTHEAST
Gomco Sales Co.
(800)793-0154

SOUTHWEST
TMA
(619)579-9603

MIDWEST
Gomco Sales Co.
(800)793-0154

SOUTH CENTRAL
JJ O'Connell Co.
(800)727-0770

SOUTHEAST
Mys-Tec Sales
(404)505-0163

CANADA: DKSI 1-(877) 508-3900 email: info@ezoil drain.com

For Cars and Pickups order from: www.oildrainvalve.net

USA: www.EZoil drain.com **Canada:** www.EZoil drain.ca



EUFMC

WILLIAMSBURG, VA

EST. 1953

Fleet Strategies to Maximize Total Company Performance



Electric Utility Fleet Managers Conference

May 31-June 3, 2015

Williamsburg Lodge & Conference Center,
Williamsburg, Virginia

**Dedicated to providing
educational value to
utility fleet professionals**

A NETA® EVENT

Join fleet professionals from investor-owned electric utilities, electric cooperatives and electrical contractors from across the U.S. and Canada at the industry's premier educational event featuring:

- Presentations by industry experts, manufacturers and fleets
- Roundtables where fleet professionals and manufacturer and service provider representatives share best practices
- A drive-through utility equipment demonstration and an exhibition of more than 80 displays of the latest equipment and services for utility fleets



Altec

WORLD SERVICE

GTI

TRUCK

RESO

SPRINT

TELUGO

TEREX

REGISTER TODAY! (757) 220-1795 • www.eufmc.com



WORLDWIDE LEADER
FOR CONCRETE SOLUTIONS



MB

THE CRUSHING EVOLUTION



+ PROFIT

REDUCE DOWN TIME, FUEL CONSUMPTION AND COSTS, AND INCREASE YOUR PROFITS.

+ SAVINGS

REMOVES REINFORCEMENT, AND REBAR, AND CRUSHED MATERIAL INTO BACKCLOTS.

+ INNOVATION

400 HOURS OF USE, 100% EFFICIENCY AND SALES OF CRUSHING AND SCREENING ATTACHMENTS.

1-800-451-4477



www.mbcrushing.com



MB BREKING, INC. IS AN ISO 9001:2015 CERTIFIED MANUFACTURER

STANLEY Introduces Point and Click Measuring With New Bluetooth Laser Distance Measurer

STANLEY® introduces the new lightweight and compact TLM99s Laser Distance Measurer – model STHT77343 – with Bluetooth® connectivity that syncs the TLM99s to smart phones and tablets via the STANLEY® Floor Plan App.

Global product manager Spencer Maheu said “The TLM99s Laser Distance Measurer was designed by our team of world-class engineers and industrial designers to be a versatile electronic tool that delivers connectivity, accuracy, convenience and reliability in a simple design.”

With its automatic calculations, the Laser Distance Measurer makes job estimates quick and easy, instantly calculating square footage, volume, and distance. The multi-functional TLM99s Laser Distance Measurer is small enough to fit in a pocket and is a great tool for builders, remodelers, real estate agents, contractors, landscapers, painters, and do-it-yourselfers.

With a range of 100' (30m), the TLM99s Laser Distance Measurer is accurate to within +/-3/32" (2mm) and allows one user to take long measurements without assistance. The simple design allows for measuring distance, calculating square-footage, and even cubic-footage. The continuous measurement function allows users to find their target distance quickly and easily.



Producers of the most complete line of trench shoring & shielding equipment in the world!



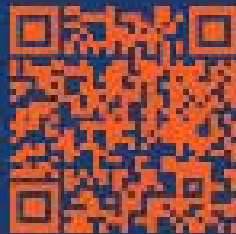
Aluminum Trench Shields



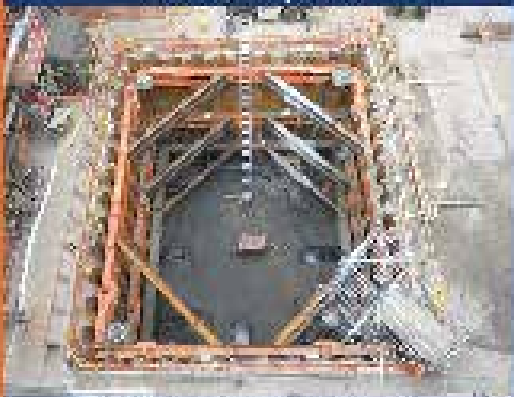
Steel Trench Shields



Slide Rail Systems



Part-A-Bridges



MD Sheeting and Bracing



Hydraulic Shoring

GME[®]

TRENCH PROTECTION SPECIALIST

a subsidiary of

TRINITY SHORING PRODUCTS, INC.

A TRINITY RENTAL & PROTECTION EQUIPMENT, INC. COMPANY



Contact us at:

800-248-2054

or

www.gme-shields.com

TLM99s features an addition and subtraction function for convenient calculations in the field and can be set to work in English or metric, or fractional or decimal modes. The handheld, battery-powered device features state-of-the-art electronics and an easy to read LCD screen that simplifies the process of taking long measurements or performing calculations.

The TLM99s can be used alone or with the new STANLEY® Floor Plan App. Available for iOS and Android devices, STANLEY® Floor Plan allows users to quickly and accurately create floor plans. Using augmented reality, STANLEY® Floor Plan users can stand in the center of a room while viewing it through their phone or tablet. The floor plan is automatically generated by tapping on the screen to designate placement of room corners and doors. The STANLEY® Floor Plan App's intuitive software estimates measurements from point to point creating a drawing of the room with dimensions. Individual room plans can easily be linked together to create a complete floor plan.

To ensure accurate room measurements, the TLM99s Bluetooth® connectivity allows users to select any dimension on the floor plan and automatically sync with the distance captured on the TLM99s. No manual entry of dimensions is necessary – in your floor plan select the dimension you want to verify, point and click the TLM99s, and move on to the next dimension. The end result is a floor plan with dimensions accurate to within the accuracy of the LDM – 3/32" (2mm).

The STANLEY® Floor Plan App automatically displays each room's dimensions and square footage calculations providing quick reference for paint, flooring or other building materials estimates. The STANLEY® Floor Plan App also allows you to add objects such as furniture, appliances, windows, doors, and more making it an excellent space-planning tool.

Floor plans can be saved and organized in project folders for future reference, or shared with other STANLEY® Floor Plan users for free. Floor plans can also be purchased to be exported as pdf, jpeg, excel, or dxf files to be printed, shared via email, social media, or sent directly to retailers. ■

ROOSE MFG. CO.
Cable Trailers

2-3 Reel Roll In

2000- 14000 # Cap.

800-552-3276 • www.roosemfg.com

ASHER
SINCE 1914

Cables - Hoop Parts - Underhung
Cable Pulling & Restoring Trailers
Jacks - Jaws - Antennas

#1155-M Shermally Underhung #1148-61 Hoop Dials 905 #1286-41 Standard 3-Reel Trailer

(323) 314-3515
www.alasher.com

Los Angeles, CA ashersince1914@gmail.com

SAFETY IS ENGINEERED INTO EVERY TOOL WE MAKE.



Experience, adaptability, quality and vision are the foundation of the Cementex brand of double insulated tools and safety related products. Our continued use of American tools, fabrics and labor paired with these fundamentals not only set us apart from the imitators but have also established us as the trusted safety tool specialists.

Visit us at: www.cementextools.com

Cementex THE SAFETY TOOL SPECIALISTS

600 JACKSONVILLE ROAD • P.O. BOX 1029 • BURLINGTON, NJ 08016 USA • TOLL FREE 1-800-604-1292
IN NJ 609-382-1050 • FAX 609-256-8685 • E-mail: sales@cementextools.com • www.cementextools.com

PROVIDING COMPLETE ELECTRICAL SAFETY SOLUTIONS



Ditch Witch RT45 Trencher

Features Powerful Tier 4 Engine

The Ditch Witch organization announces numerous upgrades to its RT45 ride-on trencher, the rental industry's number one choice in its horsepower class for the last 50 years.

Among its new features, the RT45 offers a Tier 4, 49-hp (36.5-kW) Deutz® diesel engine designed for minimal maintenance and maximum operator productivity. The new engine offers a significant increase in power over the previous RT45 engine, resulting in greater overall productivity.

The RT45 has ample power to perform all functions. A wide range of attachments is available: trencher, backhoe, earth saw, vibratory plow, microtrencher, and combination trencher/plow. A direct-coupled, high-torque digging chain motor helps the trencher attachment perform with exceptional efficiency.

Versatility and ease of use are major reasons why the RT45 is so popular among rental companies around the world. The trencher offers color-coded controls that even novice users can quickly master, and a roomy, ergonomic

operator's station that helps keep the operator comfortable during long days on the jobsite. At the foot of the operator is an easy-to-use pedal that controls the infinitely variable ground drive forward and reverse.

As with all Ditch Witch equipment, safety was the number-one priority when building the RT45. The trencher is equipped with an advanced operator presence system that stops the engine when the operator leaves the seat. For better safety and comfort, the RT45's exhaust system is mounted under a composite hood with a horizontal exhaust pipe that diverts noise and hot air from the operator.

Servicing the RT45 is simplified by smart design, with all engine service points easily accessible from one side. To help improve engine performance and reduce maintenance, the trencher comes standard with an advanced air-filtration system that is easy to maintain.

For more information about the Ditch Witch RT45 ride-on trencher, please call 800-654-6481 or visit www.ditchwitch.com. ■

UTILITY VAULT VIDEO INSPECTION

Save time, increase safety, document findings with pole-mounted video cameras



- Confined space/entanglement safety inspection
- Triage and safety inspection of vault and tunnel failure events
- Preventive maintenance of degrading components (hot spots) with optional thermal imagery
- Asset inventory and maintenance documentation with DVR options



Video still of inside electrical utility vault.

Contact Zistos Now!

We can help you increase safety and save \$\$ by using portable video inspection tools from above ground.

Go to: www.zistos.com

Zistos Corporation
Ph 631.434.1370
E-mail: utility@zistos.com

EXPANDING YOUR VISION
ZISTOS®
PORTABLE VIDEO SYSTEMS



Ditch Witch SK850

The Ditch Witch organization announces the release of the SK850, designed and engineered to be the most comfortable, most productive and most durable mini skid steer in its class.

Equipped with a 37-hp (27.6-kW), Tier 4 Yanmar® diesel engine, the SK850 is the most powerful of the company's mini skid steers. The engine provides outstanding power for all machine functions and directs more power to the attachment than competitors' models, so attachments are more productive. The SK850 accepts dozens of attachments for a wide range of utility, landscaping, plumbing, and other underground construction tasks.

The Ditch Witch organization firmly believes that a more comfortable operator is a more productive operator, and the SK850 embodies this philosophy. Its 74-square-inch (188-cm²) platform is larger and higher than the competition's, giving the operator increased comfort and stability while keeping him above the worksite. The ergonomic operator's station has been updated with new, customer-requested features, for optimized comfort and efficiency. Dual-lever ground drive controls come standard, with an optional single-lever joystick available. An auxiliary control foot pedal helps operators maintain hydraulic flow to the attachment while freeing their hands to control depth and ground speed.

The SK850's innovative high-drive track system has

bolt-on sprockets that can be interchanged—an exclusive Ditch Witch feature—to provide longer-lasting performance. The track system also has a low-maintenance track-tensioning system with a grease cylinder for easy adjustment and track removal, which helps increase track life and reduce downtime. The SK850 comes with the customer's choice of 42-inch (107-cm) or 36-inch (91-cm) wide tracks.

With its 860-lb (390-kg) rated operating capacity and 83-inch (2.1-cm) hinge-pin height, the SK850 is engineered for exceptionally productive loading. Unlike its competitors, the SK850 is construction-grade, built with reinforced steel that can withstand the rigors of the jobsite. And its belt-free design helps minimize maintenance and increase uptime.

Another standard feature that improves both operational efficiency and operator safety is the auto-throttle function. When enabled, the auto-throttle automatically reduces engine RPMs when hydraulic functions are not in use. The engine returns to the operator-set engine RPM when any hydraulic function is engaged, improving overall fuel efficiency.

For more information about the Ditch Witch SK850 mini skid steer, please call 800-654-6481 or visit www.ditchwitch.com. ■

DON'T GET LEFT IN THE DARK

NightRay and StarBeam Vehicle Mounted Spotlights
the Lineman's Spotlight of Choice

KH Industries **vehicle mounted remote controlled spotlights** are the utility industry standard for nighttime line inspection and repair because of their durability in the harshest environments. These professional grade lights were made to withstand the rigors an utility industry including snow, ice, saltwater, and rough terrain.

Introducing the **NEW TwinRay™ Controller**

Available on both the new NightRay 2 and StarBeam 2 Spotlight Systems

Allowing you to independently control two spotlights
with one wireless controller.



- Controls one or two KH Spotlights from up to 100' away
- Toggle between lights with KH's exclusive A/B switch
- Create a custom beam pattern to match your job site
- Multi-directional lighting at any angle
- Easily add a second NightRay or StarBeam to a single light system



NightRay 2 Spotlight System

Available in a one or two light system with wireless, wired, or dual-control operation.

Full lamphead rotation: 170° horizontal and 150° vertical tilt. Durable polycarbonate exterior resists breakage and is snow, ice, UV, and salt water resistant.

Internal gears and motors provide positive positioning and resist damage from heavy vibrations.

Exclusive open yolk design and clutch allows for trouble free operation in snow and ice.

Clear and consistent wireless communication and easy plug-and-play Cat 5e connector for wired systems.

StarBeam 2 Spotlight System

Twin Par 46 H3 Spotlights or 35-watt HID Xenon heads for extremely bright illumination.

Motor-controlled dual lamp heads rotate 330° (±10°) on horizontal and vertical axis to provide precise placement of light output.

Polycarbonate sealed housing and weather proof motor board and motor housing provide an extremely weather resistant design including snow, ice, and salt water.

The Starbeam's internal assembly features hard coated anodized drive shafts, brushless connections, and lubrication free drive system which will provide years of dependable service under extreme environmental conditions.



khindustries.com

For more information, including requesting a quote for your fleet,
contact KH Industries:

Phone: 716-312-0088 • Sales@khindustries.com

Visit us at these shows:



Company	Pg.	Website
Ajax Equipment	3	www.ajaxtoolsandequipment.com
Asher	26	www.alasher.com
Cementex USA	27	www.cementexusa.com
Condux	2	www.condux.com
Dur-A-Lift, Inc.	7	www.dur-a-lift.com
Efficiency	19	www.usatrenchboxbuilder.com
E-Z Oil Drain	21	www.ezoidrain.com
GME Shoring	25	www.gme-shields.com
Heat Wagon	14	www.heatwagon.com
Herculock	6	www.herculock.com
Hioki	9	www.hiokiusa.com
I-80 Truck Sales	1	www.i80equipment.com
K & H Industries	31	www.khindustries.com
Krenz Vent	6	www.krenzvent.com
MB Crusher	23	www.mbamerica.com
MSA Safety	IFC	www.msasafety.com
Nesco	BC	www.nescorentals.com
NTEA	11	www.worldtruckshow.com
Pelsue	5	www.pelsue.com
Reconyx	15	www.reconyx.com
Rock Hound	16	www.rockhoundattachments.com
Solesbees	32	www.solesbees.com
Steelman	14	www.steelman.com
Surge Suppression	IBC	www.surgesuppression.com
Towmaster	17	www.towmaster.com
Underground Construction Technology	18	www.uconline.com
Utility Metals	13	www.utilitymetals.com
Yale Cordage	10	www.yalecordage.com
Zistos	29	www.zistos.com



Solesbee's
Equipment & Attachments LLC



Hydraulic
Excavator
Thumbs



Excavator
Progressive Link
Thumbs



Excavator
Thumbs



Excavator
Demolition
Grapples



Excavator
Wood
Shears



Skid Steer
Grapple Rakes



Stump
Pullers



Loader Rakes
with
Top Clamp



Skid Steer
Forks



Skid Steer
Bucket Grapples

All attachments available for on time delivery!
 Ph. 770-949-9231 • Fax 770-947-9916
800-419-8090
 www.solesbees.com

Surge SuppressionTM Incorporated

Manufacturer & Supplier of High Performance Surge Protection



ISO 9001:2008 and ISO14001:2004 Manufacturing Facility

QUALITY, PERFORMANCE, INTEGRITY

Electronic grade surge protective
devices (SPDs) for 5-7200 Volts

Three Decades of Government,
Industrial and Commercial Experience

Setting the standards for quality,
performance and customer satisfaction,
SSI is *your* surge protection solution!

Contact SSI today:

888-987-8877, 850-654-5559

Visit: surgesuppression.com

Email: us@surgesuppression.com

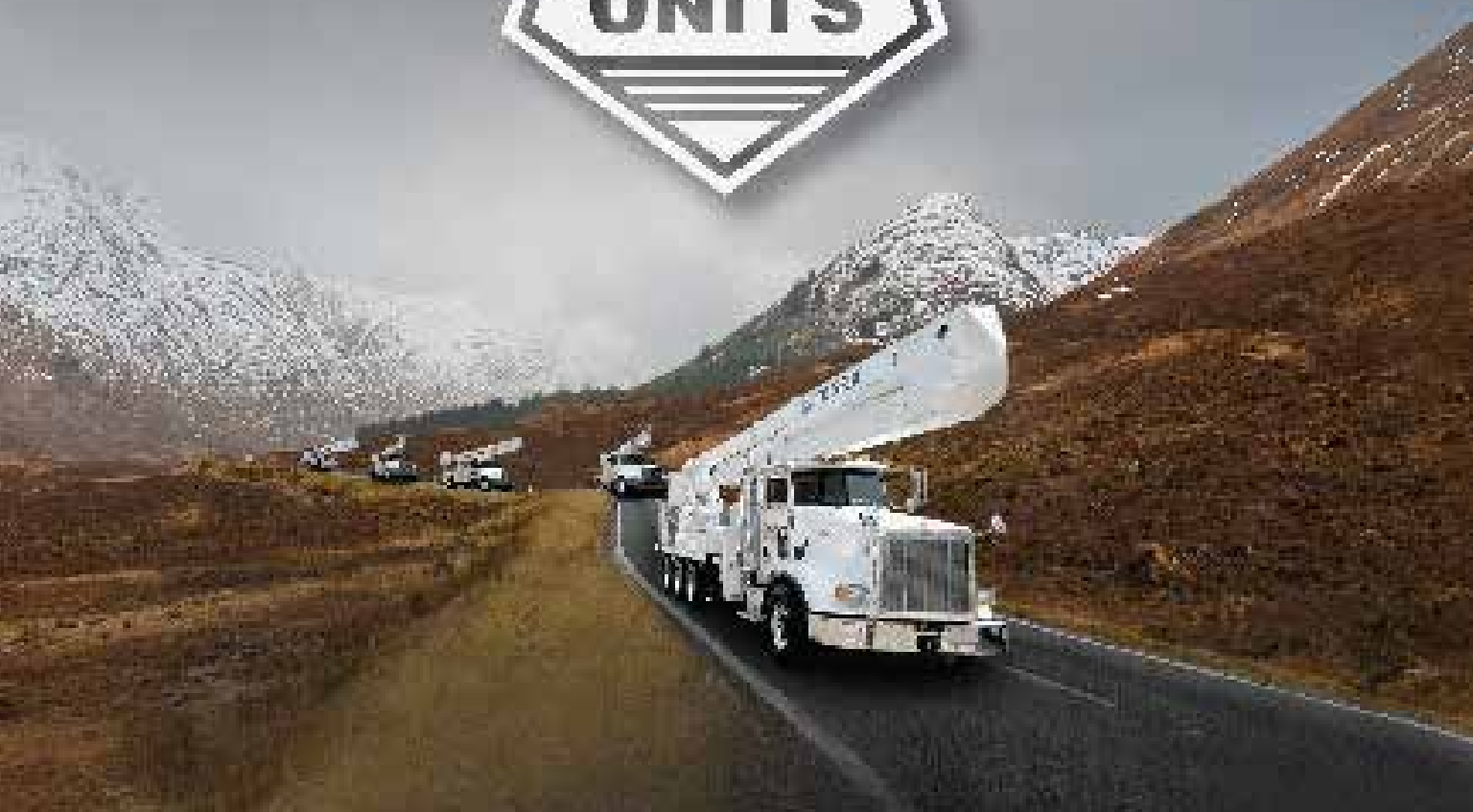


NESCO'S

ADDING HUNDREDS OF

★ ★ ★ ★ ★

NEW UNITS



NESCO IS PLEASED TO ANNOUNCE

WE ARE ADDING HUNDREDS OF NEW UNITS TO OUR EXISTING FLEET!

In addition to the acquisition of Foley Utility Equipment's rental fleet—which added 1-2 year old transmission and distribution units—NESCO has purchased hundreds of new Terex bucket trucks and digger derricks; Manitex cranes; and Hogg & Davis and Sherman + Rolly springing equipment. The new additions to our fleet mean NESCO truly has everything you need to get the job done!

CONTACT US NOW AND GET WORKING! 800-252-0043 | www.NESCORENTALS.com



PHOTO: JAMES