

August 2015

THE UTILITYSOURCE

Products and Services for Today's Electric, Telecom, and CATV Utilities

**New LineWise
"Hydraulic" Phase Lifter
Safely Increases
Productivity of Raising
Energized Lines**

**Know Your
Directional
Drilling Bits**



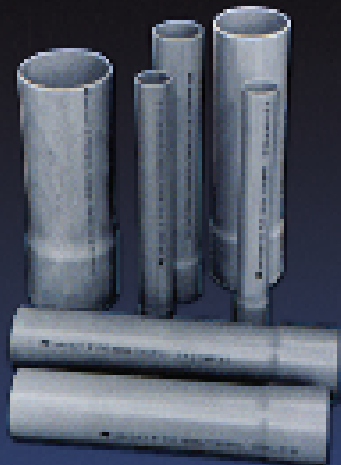


**american
pipe &
plastics Inc.**

PART OF **A** **atkore**
INTERNATIONAL



AMDUCT POWER, COMMUNICATIONS AND ELECTRICAL CONDUIT



- Manufactured to meet NEMA TC2, NEMA TC6/8, ASTM F512 and UL651.
- Sweeps, bends, and fittings are manufactured to meet NEMA TC3, NEMA TC9 and UL651.
- Our PVC Conduit has a smooth bore that reduces cable drag.
- Lightweight, flexible, easy to handle and resistant to impact.
- The solvent welded joints ensure water tight integrity excellent resistance to chemicals, rot, rust and electrolytic corrosion.

www.ampipe.com – (607) 775-4340





POWER. HARNESSSED.

MSA's premium **EMTECH™ Arc Flash-Rated Harness** provides outstanding arc flash protection for utility workers and construction workers who work at heights. Its rugged design holds good on the job and is 25% lighter than comparable harnesses. From the MSA Award-winning, the **EMTECH Harness** is the industry's most maintained performance in the event of a fall, fall arrest or a fall.

MSA's **Workman™ Arc Flash-Rated Harness** provides excellent arc flash protection in a sleek, black design that's lightweight and comfortable. The high strength of its webbing is built into the leg, to allow you to sit and lean back in the event of a fall. The **Workman Arc Flash** harness is a sleek, effective option for safety managers and contractors who need to comply with the latest electrical regulations when harnessing the job.

Learn more at MSAsafely.com/ArcFlash

FALL PROTECTION SOLUTIONS



© MSA 2014

PG 4	Industry News
PG 8	Chronic Oil Leaks & Small Spills: Their Causes & the Environmental Hazards They Create
PG 14	Know Your Directional Drilling Bits
PG 18	New LineWise "Hydraulic" Phase Lifter Safely
PG 20	Proper Cable Protection & Preventing Trip Hazards
PG 22	GoLight's New Model GXL 4021 LED Work Light is Ultra Bright, Amazingly Tough & Ready For Super-Duty Service
PG 26	New Product News
PG 36	Ad Index

GROUP PUBLISHER	Brandon Greenhill 205-733-4343 brandon@handfmedia.net
ASSOCIATE GROUP PUBLISHER	Rick Harless 205-624-3794 rick@handfmedia.net
ASSOCIATE PUBLISHER	Dave Gomez 205-358-7913 dave@handfmedia.net
EDITOR	Annie McGilvray annie@handfmedia.net
CREATIVE/WEB DIRECTOR	Jacklyn Greenhill jacklyn@handfmedia.net
ADMINISTRATIVE DIRECTOR	Steven Hobson steven@handfmedia.net

CEO
Christy Hobson

PRESIDENT
Glen Hobson



APS 75
HYDRAULIC UNDERGROUND PULLING TRAILER
AVAILABLE WITH AND WITHOUT
AIR COMPRESSOR & HYDRAULIC JACES

- ✓ 7,500 LBS OF PULL FORCE
- ✓ 2,600 FT OF ANTI-TWIST ROPE
- ✓ EASY TO OPERATE INSTRUMENT PANEL
- ✓ INSULATED FOR NOISE SUPPRESSION



3411 HINDWOOD DRIVE | BIRMINGHAM, AL 35226 | 205-624-3354 | WWW.HANDF-MEDIA.COM



Executive and Advertising Offices
PO Box 1568
Pelham, AL 35124
phone: 205-441-5591 fax: 205-624-3354
www.theutilitysource.net
glen@handfmedia.net

The Utility Source™ is published twelve times a year on a monthly basis by H&F Media Group, Inc. The Utility Source™ is distributed free to qualified subscribers. Non-qualified subscription rates are \$57.00 per year in the U.S. and Canada and \$84.00 per year for foreign subscribers (surface mail). U.S. Postage paid at Birmingham, Alabama and additional mailing offices.

The Utility Source™ is distributed to Power, Telcom and CATV Utilities and Utility Contractors throughout the USA. Publisher is not liable for all content (including editorial and illustrations provided by advertisers) of advertisements published and does not accept responsibility for any claims made against the publisher. It is the advertiser's or agency's responsibility to obtain appropriate releases on any item or individuals pictured in an advertisement. Reproduction of this magazine in whole or in part is prohibited without prior written permission from the publisher.

POSTMASTER: Send address changes to
H&F Media Group, Inc., P.O. Box 1568
Pelham, AL 35124
PRINTED IN THE USA



New aerial lifts are on the rise at Versalift.
For over 50 years we've pursued innovation.
Curious what's next?

ICUEE: September 29 – October 1, 2015





Terex Utilities Host 2015 Service School

To keep mechanics and service technicians up-to-date on the latest Terex® equipment technologies and advancements, Terex Utilities hosted its annual Service School on June 9-11 in Watertown, S.D. At this year's event, the Terex Service Department hosted 71 people, some attendees came from as far away as Australia to participate, representing 38 utility companies.

The 2015 Service School offered attendees the opportunity to learn tips, tricks and techniques on utility trucks and support equipment from experienced Terex instructors. During the 3-day event, participants rotated through a series of stations that incorporated Terex utility equipment and training aids to educate attendees on the most current maintenance, troubleshooting and repair procedures for the company's digger derricks and aerial devices.

For mechanics and service technicians not able to attend the Watertown event, Terex Utilities will host Service Schools on September 9-10 in White House, Tenn., on September 15-17 in Waukesha, Wis., and on October 13-15 in Thomasville, Pa. In addition to these in-person training events, customers can request customized training at their own facilities or take advantage of Terex Utilities' online training university. Visit for more information: www.terex.com/utilities/en/service-support/training/index.htm

Checkers Industrial Safety Products Acquires SVE Portable Roadway Systems

Safety products manufacturer, Checkers Industrial Products, LLC has acquired SVE Portable Roadway Systems. As an industry leader in temporary roadways and ground protection systems, SVE has manufactured high-end, innovative products for over 25 years and has served customers in the US, Canada, Australia, Europe and Japan.

"Checkers is a leader in asset protection, which synergizes with the products SVE offers. The acquisition of SVE by Checkers opens doors to other markets and industries that we in the past haven't had a foothold. SVE is proud to now be a part of the Checkers family," said former SVE President Art Price when asked about the acquisition.

The SVE product offering includes brands MUD-TRACKS®, TRAKMAT®, SHOR-MAT®, and more, serving the construction, utility, landscaping, and drilling markets. These product lines will now fall under Checkers' growing ground protection category.

"SVE is the second ground protection/matting company recently acquired by Checkers, exponentially growing us in that market. With the addition of the SVE brands we are also acquiring a strong product line, known within the industry for being a pioneer in ground protection," said Checkers' Executive Vice President Jack Roser.

www.checkersindustrial.com

Mack Trucks Improves Diagnostics

Mack Trucks recently enhanced its Uptime solutions through the expansion of its partnered services offering, enabling faster, more accurate diagnostics and improved communication so customers can get their vehicles back on the road quicker. Partnered services allows Mack to integrate innovative service providers into its unparalleled customer support environment.

The improved diagnostics results from the integration of Mack® ASIST, Mack's web-based fleet service management platform developed by Decisiv, with Truck Diagnostics System (TDS), a JPRO-based software solution from Mack's partner Noregon that diagnoses engine, transmission, aftertreatment systems and all vendor components. Once TDS or JPRO software identifies a vehicle fault, a service case is automatically opened in ASIST and the customer has a quicker diagnosis of what's wrong with the truck.

Customers will also know the severity of the problem and how long servicing will take, enabling them to make critical business decisions about what they need to do to handle the issue.

www.macktrucks.com

Transmission • Distribution • Tree • Sign & Signal • Boom Truck & More



Ring Power[®]

Utility Equipment



Rent the right tools for YOUR job

When installing infrastructure and maintaining facilities, we are dedicated to providing you with the highest quality equipment. Working with Ring Power Utility Equipment gives you access to a vast range of high length products to match your fleet. Short-term, long-term or Rental-Purchase options available.



Mike Beauregard • 321.403.6776 • Mike.Beauregard@RingPower.com • www.RingPower.com

Ring-O-Matic Inc., an Iowa based manufacturer of vacuum excavators, is pleased to announce the appointment of Brian Metcalf as CEO.

For the past eight years Metcalf has been president of HammerHead Trenchless Equipment of Lake Mills, Wisconsin, a Charles Machine Works company. A Pella native, Brian has previously held leadership positions at both Vermeer Corporation and Pella Corporation.

“I’m excited to be returning to the Pella area and I am honored to be joining the Ring-O-Matic family,” said Metcalf. “Ring-O-Matic has nearly a 60-year history full of unique innovations to meet the needs of customers. The company is well positioned as a privately held company for an expanded role in providing unique customer-driven solutions in trailer- and truck-mounted utility construction vacuum excavators, industrial vacuum excavators, and car wash pit cleaners.”

As CEO, Metcalf will direct his attention to developing a sustainable strategic growth plan to position Ring-O-Matic as the preferred supplier of vacuum excavators, as well as its complement of related support products to meet customer requirements at jobsites worldwide.



www.ring-o-matic.com

MOROOKA

SERVING THE UTILITY INDUSTRY NATIONWIDE

PRODUCT ATTACHMENT APPLICATIONS:

- Digger Derricks
- Field Service Equipment
- Telescopic Buckets
- Boom Cranes
- Personnel Carrier

MADE IN AMERICA

To locate a dealer near you, call 877-667-6652 or visit us at morookacarriers.com

MOROOKA

CONSTRUCTION LIGHTING



Larson Electronics

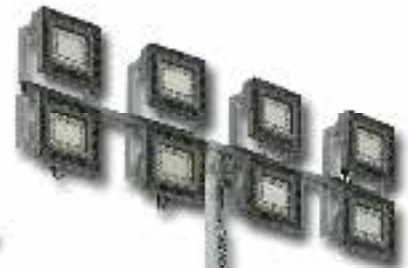
Magnetic Mount LED



Power Distribution



16 Foot Telescoping Light Mast



30 Foot LED Light Tower With Generator

Solar Power Light Tower



1-800-369-6671
LarsonElectronics.com
Sales@larsonelectronics.com





Chronic Oil Leaks and Small Spills

Their Causes and the Environmental Hazards
They Create; Reactive Barrier Containment
System Helps to Address Problem
of Chronic Oil Leaks

A catastrophic oil failure occurs when a sudden or unexpected breakdown of the transformer's electrical system, oil storage system, or other primary containment system malfunctions, and oil is released into the surrounding area. More common are chronic oil leaks from corroded cooling radiator fins, welds, valves, fittings or through damaged gaskets, often frequent occurrences at transformer sites. If left unnoticed or simply ignored, they will lead to serious environmental contamination. A dripping leak at a rate one drop per second will add up to 13 US gal of oil per month. One drop per second will add up to three drums of oil per year.

According to the EPA, 1 gallon of oil will contaminate 1,000,000 gallons of water. "One quart of oil can pollute approximately 40,730 square feet of soil, making it non-productive for farming or plant growth for up to 100 years"¹. Although the transformer servicing industry has developed efficient and effective methods to repair these leaks, they are frequently unnoticed or ignored and quite often a considerable quantity of oil can be released to the environment.

Surge SuppressionTM Incorporated

Manufacturer & Supplier of High Performance Surge Protection



ISO 9001:2008 and ISO14001:2004 Manufacturing Facility

QUALITY, PERFORMANCE, INTEGRITY

Electronic grade surge protective
devices (SPDs) for 5-7200 Volts

Three Decades of Government,
Industrial and Commercial Experience

Setting the standards for quality,
performance and customer satisfaction,
SSI is *your* surge protection solution!

Contact SSI today:

888-987-8877, 850-654-5559

Visit: surgesuppression.com

Email: us@surgesuppression.com



WE HAVE THE ROPE TO GET THE JOB DONE.



The problem of chronic leaks is so common, that an entire industry was developed around chronic leaks repairs. Several companies offer leak repair technologies and service, others offer a more high tech approach and repair using fast setting epoxy compounds and various “polymer repair composite” kits, low temperature vulcanizing injection materials, teflon coated pipe plugs, installed by drill and tap techniques, a variety of custom designed and fabricated clamps and enclosures, injectable bolts and other mechanical fasteners. Then we have the standard secondary containment. The simple concept is an up-scaled bucket with all its limitations.

Take for example the concrete containment system. It collects oil spills and leaks but also collects rain water and snow melt. Concrete is naturally porous, prone to cracking and undergoes deterioration. Large concrete slabs require expansion joints. Gaps and cracks in concrete are permeable, and if these are significant, the concrete is not adequate to contain spilled oil. What to do with the rain water?

- Automatic sump systems (electricity supply, maintenance)
- Gravitational oil water separators
- Chemical oil water separators
- Chemical oil absorbers
- Oil stop vales, chemically activated plugs (frequent replacement, plugging)

A classical containment usually works great, until it starts raining. A new patented multilayered chemical barrier system, offers a novel approach to containment of chronic oil leaks and catastrophic oil spills. Albarrie’s innovative Sorb-Web™Plus Secondary Oil Containment system is designed to significantly reduce capital outlays, provide environmental protection and drastically lessen the economic consequences of an oil spill.

The system and its layers are designed to allow water to move freely through its “Smart Barrier” without accumulating and pass all the way through the system and back into the native ground. This revolutionary multi-layer system of interlocking geotextiles filled with proprietary high efficiency polymeric immobilizers transforms into a rubber seal when exposed to hydrocarbons.

In the event of an equipment failure which could lead to an oil spill, the SorbWeb™Plus System and its SAM layer absorb the spilled oil, while the Oilmat congeals and seals the containment, preventing any oil from passing through.



Buccaneer Rope
COMPANY

800-358-767

www.bucrope.com



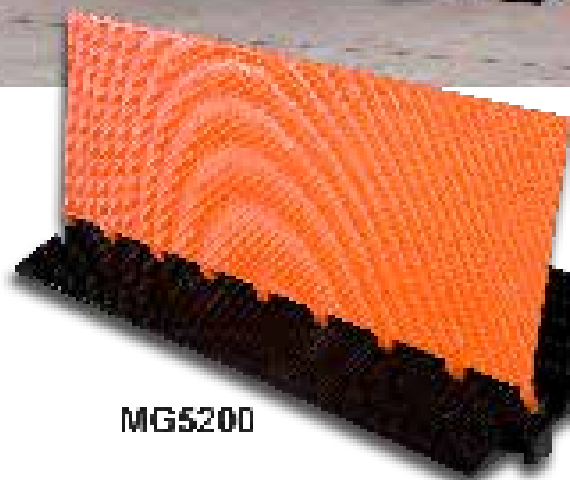
CAN YOUR CABLE GUARDS SURVIVE THE 150 TON CHALLENGE?



Elasco Guards Customer Testimonials Speak for Themselves

"We purchased some of your heavy duty Elasco cable guards...and finally had a chance to give it a true test. During the summer we moved a house on a tractor trailer in Omaha, Nebraska and was thoroughly impressed with your cable guards. After the 150 ton house had rolled across the ramps, the portion of the cable that was within the channels was unharmed. We feel comfortable that whenever needed in the future, we will use Elasco Products cable guards to protect our coaxial and fiber optic cables without having any damage concerns to the cables. Thanks for the great product."

- Steve Meska / Supervisor Network Design & Construction / Cox Communications, Inc.



MG5200



ABOUT ELASCO PRODUCTS. Based in Huntington Beach, California, Elasco Products, LLC manufactures high quality solid cast urethane parking guards and cable protectors. The wheels through and overable. Made in the USA and backed by a lifetime warranty, Elasco's guards set the industry standard.

EXTREME CABLE PROTECTION

Durable Long Lasting Lightweight Easy to Use

Sales 1-800-827-7887

Sales@elascoproducts.com



The SorbWeb™ Plus system is optimized to reduce the economic costs involved in replacing the most important elements of the system. The extent of the remediation and associated cost is limited to the quantity of oil released, and the response time of the remediation. In addition to cost savings gained from using The SorbWeb™ Plus system as opposed to conventional containment methods, there are several other distinct advantages:

- No standing water to deal with
- No mechanical moving parts
- Cost efficient since it is virtually maintenance free
- Allows for full access to equipment because the system is designed to be driven on.
- Reduced installation costs as there is no need for concrete work, rebar or limitations
- Flexible, easy to expand or repair.
- No monitoring required.
- Proven, effective 24/7 spill and leak protection.
- Readily accommodates & accepts changes on the go during construction and installation
- Robust engineered solution
- Environmentally responsible
- Offers fire quenching capabilities
- Extended service life surpasses that of the equipment it serves.
- Meets the EPA Spill Prevention Control and Countermeasures (SPCC) requirements per 40 CFR 112.7
- Significantly reduces liability associated with oil spills

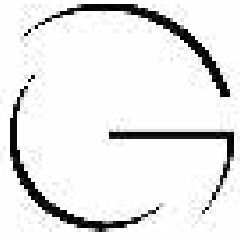
VAULT BLOWERS and ACCESSORIES

TRANSFORMER COOLING FANS and ACCESSORIES

CONFINED SPACE BLOWERS and ACCESSORIES

California Turbo, Inc.
 (800)448-1446 fax: (909)854-2801
 10721 Business Drive, Fontana, CA 92337
 www.californiaturbo.com e-mail: hzank@californiaturbo.com

Truly... a remarkable leap forward in the proactive containment of hydrocarbons.
www.sorbwebplus.com



GOLIGHT

Revolutionary Lighting Solutions



Durable... Versatile... Powerful... GUARANTEED



When the job gets tough, our men need reliable illumination to show them their way and march through elements to get their critical service back online. More often than not, that means battling wind, rain, snow and ice and doing so in the dark. In those conditions, light that can be dramatically directed where it is needed, when it is needed is an essential tool for safety and productivity. In both emergency situations and day-to-day operations, Golight has proven to be a vital tool in extending work hours and increasing productivity. Golight has been a partner to the men and women who keep our lights on for almost 20 years and we are committed to seeing that relationship grow and develop.



KOOLERS... BANDANNAS... DECALS . Send an email to media@golight.com and let us know you saw our ad in "THE UTILITIES SOURCE" and we will send you some Linean branded merchandise.

Know Your Directional Drilling Bits



By Shannon Houk

Choosing the Correct Bit is One of the Most Critical Decisions a Driller Makes

HDD rock drilling brings with it a number of technical challenges. The bidding process alone is challenging because oftentimes the customer who is requesting bids has little information available about ground formations. Many drilling contractors find themselves conjecturing about what kinds of conditions they will encounter on many jobs, especially when they're unfamiliar with the area.

Tooling up opportunely for a job in an unfamiliar area can mean the difference between making money and losing money on the contract.

Choosing the correct bit is one of the most paramount decisions a driller has to make. The effectiveness of a drill bit varies by formation type. There are three types of formations: soft, medium and hard. A soft formation includes clays, red beds, shale, soft limestone and unconsolidated sands. Medium formations include calcites, dolomites, hard shale and limestone. Hard formations include calcites, cherty limestone, hard shale and mudstones. Knowing your options and what formation each type of bit is designed to drill is essential to the prosperity of a job or time and money wasted.

Traditionally, drilling companies have used tri-cone or rotary cone bits. Specialists from the Sharp-Hughes Tool Co. produced the tri-cone bit in 1933, using the organization's two

cone bits as a base outline. The fundamental idea, which underpins the proficiency of rotating cone drill bit, is the dual axis action of the bit. At the point when boring, the bit body rotates, while the heads themselves spin at an angle different from the body. Tri-cone bits consist of a cylindrical-shaped bit body furnished with three mounting heads organized in a cloverleaf design around its body. The bit heads are cone shaped and outfitted with bearings that guarantee smooth pivot under heavy loads. The heads are connected to the bit body at approximately 45 degrees with their peak facing the center. Each head has several concentric rows of teeth which structure the bearing or cutting points of the bit.

There are two essential bit head tooth designs used on the tri-cone bit: Insert and mill tooth. The insert tooth is a cone shape while the mill tooth has a flat wedge shape. At the point when turned under weight against the rock face, the teeth cause a smash sort of disappointment of the material bringing about a layer of rock to be sheared away at every pivot of the bit. Some problems that you may run across when using these bits are: When the teeth on the heads are worn or broken, the heads are usually discarded. Another issue with these types of bits is losing the heads (cones) in the hole from bearings locking up.

Go Green and Dramatically Reduce Fuel Cost!

The patented ICOM JTG II Liquid Propane System
is innovative and offers these advantages:

- Nationwide Installation & Service
- Equal power, torque and drivability of gasoline
- Cold climate reliability
- Reduces greenhouse gas emissions by up to 20%
- Dramatically reduced emissions
- Virtually no particulates
- Fuel range extended with the use of bi-fuel
- Extended service intervals



ICOM's Propane Optimization
Program' (POP) eliminates driver
input to maximize propane usage

ICOM NORTH
AMERICA
Alternative Fuel Systems

Since there are a number of types of cone cutters (designed to cut variants of rock), a problem arises when the bit transitions from one layer of rock formation to another (for example: from limestone to shale to clay to dirt). Since there is not a cone cutter in existence that is designed to cut rock formations of varying hardness, the driller is forced to choose the cutter type for the rock he/she thinks they will be in more than the others. In many cases, the driller has no choice but to use multiple types of bits and hole openers to accommodate the changes in layers.

By using a PDC (Polycrystalline Diamond Compact) bit, the cost of rig standby time can be significantly reduced because fewer trips of the bits in the hole are needed. The DDI Volcano PDC hole opener offers an improved process for enlarging and cleaning the pre drilled pilot hole for future installation of (including but not limited to) gas pipeline, waterline, sewer line, telecom products, etc. The DDI Volcano PDC hole opener is a drill bit that can either be pulled or pushed, while being rotated, by an HDD drilling rig through the pre-drilled pilot bore. As the drilling rig rotates the bit, the PDC cutters scrape and cut the rock formation. As the PDC cutters shear the rock, nozzle ports that are installed in the junk slots of the bit are situated in a specific configuration that allows the drilling rig to pump drilling fluid through, thereby

flowing the rock cuttings back to the surface.

Rate Of Penetration (ROP) is always a major issue for boring contractors. Low ROP (for example, 3 to 5 ft. per hour) is primarily a result of the high compressive strength of the highly overburdened formations. Initially, the tri-cone bits with hardened inserts used for drilling hard formations at shallower depths were applied as wells went deeper. However, at deeper depths it is harder to know when a tri-cone bit's bearings have failed, a situation that can occur more frequently when more weight is applied to the bit in a deep well. This can lead to timely failures, lost cones, more frequent trips, higher costs and lower overall rates of penetration. A PDC drill bit can triple the rate of penetration due to extended hours of bit life, no moving components, less wear and tear on rigs.

In addition to the increased rate of penetration, the DDI Volcano PDC Hole Opener/Reamer solves several other major issues that HDD drillers continually face:

Loss of Cone Cutters Down Hole

- It is a common occurrence for drillers to lose cones from their tri-cone reamers. This happens for a variety of reasons. Whether it is poor construction of the tool,

Roll-Up Signs

All signs are designed using the Standard Highway Signs Manual as specified in the Manual on Uniform Traffic Control Devices (MUTCD).



Bone Corner Pocket, Anti-Killing Devices, Storage Strap and Reversible Snaps for Overlays option and Heavy Duty Fiberglass with Anti-Blooming are standard on all Roll-Up signs.

Signs Stands

The SafeZone Series SZ-412 is a super lightweight compact springless sign stand for use with Roll-Up signs. Easy to use and easy to store, its single sign attachment point allows for quick deployment in the field.

The SZ-412 is the right choice for Utility Companies, DOT's, City & County Governments or anyone working along secondary roads or inner city streets.

The SafeZone Series SZ-412-S is the single spring-loaded version of our popular SZ-412.





Bone Safety Signs

6450 Industrial Way • Alpharetta, GA 30004

800-873-2399

overuse or other extenuating circumstances, cone loss is a constant and looming threat. Having this happen on a bore can be catastrophic. This causes the need for the drilling company to either fish out the lost cone, and in some cases, start the bore again from scratch. All of this is done at the cost of the drilling company.

- Since there are no moving components on the DDI Volcano PDC Hole Opener/Reamer, there is nothing to break and fall off down hole.

Fuel Usage

- The longer a drilling company spends on a jobsite and more support vehicles that are needed, fuel costs can soar into the hundreds of thousands of dollars. A bit with a slow rate of penetration only elongates the duration a drilling company spends onsite.
- Recent figures have shown a 40 to 60 percent fuel savings while running the DDI Volcano PDC Hole Opener/Reamer. The faster the rate of penetration, the greater the fuel savings.

Labor and Housing Costs

- Both labor and housing costs follow the same logic as in

the fuel usage example. The longer a company spends on a job, the more their labor and housing costs.

- If a company can shave days or weeks off of their job, the savings are enormous.

With no moving parts, PDC Bits and PDC Hole Openers can be used in a variety of conditions without the fear of losing cones or parts in the hole. They can be custom manufactured and are available in a wide range of size and thread combinations to meet specific project requirements.

The advantages of using a PDC Bit and PDC Hole opener include:

- Better Performance
- Smoother Drill Operation
- Integral Design
- No Weld-On Components
- No Moving Parts

Why use drill rods when you can save time and money with new technology? DDI Volcano PDC Hole Openers are the future.

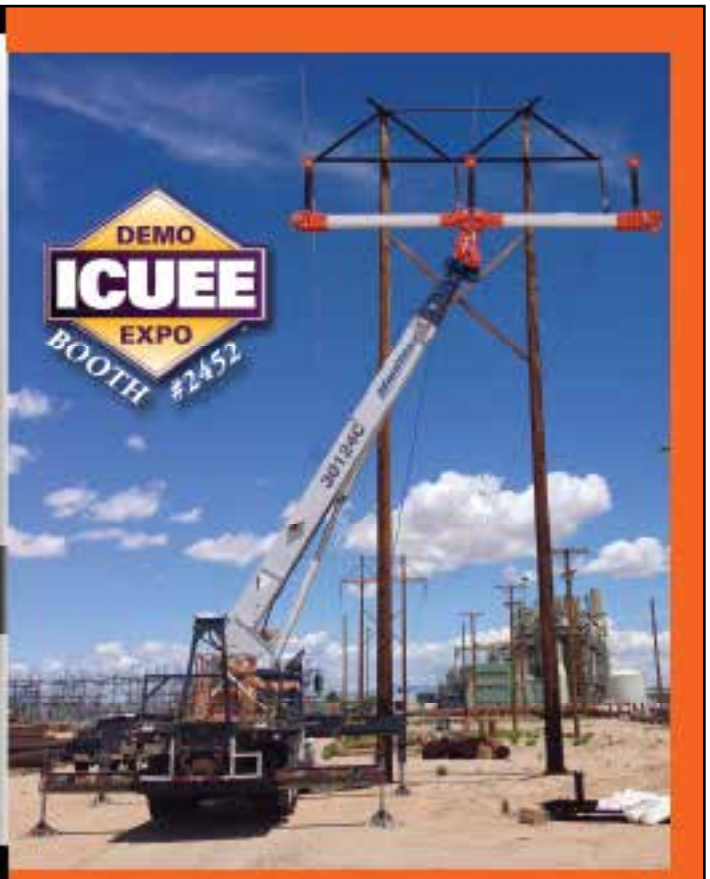
www.ddibits.com

LineWise

By Diversified Products

Diversified Products provides customer focused solutions to make your linemen more efficient, productive and safe. Whatever the type of utility work - barehand, de-energized, transmission & distribution - Diversified will keep your crew moving down the line.

254-757-1177
www.line-wise.com



New LineWise “Hydraulic” Phase Lifter Safely Increases Productivity of Raising Energized Lines

LineWise introduces its latest breakthrough in utility line equipment, the Hydraulic Phase Lifter, a patent-pending insulated crane attachment that can safely support up to three energized lines at once.

The versatile Phase Lifter allows workers to come in from underneath and hold the conductor, as opposed to over the top with rigging sticks hanging from a crane. This provides a significant advantage in areas where there isn't enough overhead clearance to get outside and above the conductor.

The Phase Lifter also has an impressive 1,500-pound total vertical load and 225-pound side load capacity per conductor. Maximum conductor spacing is 14.5 feet in increments of 6 inches, for a maximum width of 29 feet, which is particularly appealing to large, high-voltage operations.

Because safety is always a concern when dealing with energized lines, the quick-attach insulator is available in industry-standard “Line Post Polymer” or “Sealed Fiberglass”. The arms are sealed fiberglass and include a desiccant canister to absorb moisture and add another layer of protection. Furthermore, the quick-attach insulator requires no tools to install or remove, maximizing simplicity.

To attach the Hydraulic Phase Lifter to a crane, an adapter specific to the type of crane is fitted. A hydraulic cylinder changes the angle of the Phase Lifter. The crane's boom is

angled from 55- to 80-degrees for horizontal and vertical builds. The hydraulic power source for the hydraulic cylinder is provided by a self-contained hydraulic power unit (HPU) on the Phase Lifter or from the crane.

When it comes time for setup, the Phase Lifter's exclusive folding arms are mechanically synchronized to open and close simultaneously. A pin automatically slides into a slot to lock the arms in a working/open position, while a cross pin locks the pin in place. The arms lock together when closed, and the Phase Lifter stows on the side of the crane for easy transport to and from a jobsite.

If you are planning on attending the ICUEE show LineWise will have a NEW Hydraulic Phase Lifter and a NEW Hydraulic Insulated Work Platform mounted to Manitex cranes in Booth#N2019. Also, please stop by our indoor Booth#2452 to see the newest LineWise Utility Products.

LineWise is a division of Diversified Products. The company designs, engineers and manufactures a full line of utility products, including line lifters, insulated work platforms, phase lifters, transmission temporary conductor supports and the Buddy Bushing cross arm reinforcement system. For more information, contact Diversified Product Development, 1001 Webster Avenue, Waco, Texas 76706, phone 254-757-1177, or visit the website at www.diversifiedproduct.com.



Proper Cable Protection and Preventing Trip Hazards

Elasco Products offers a solution to prevent damage to cables and improve site safety.

Steve Mieska, from Cox Communications, had a difficult challenge, how to move a 150 ton truck across an area covered with expensive and delicate cables without damaging the cables?

The obvious choice would be to cut the power, disconnect the cables and move them. Sounds easy enough, right? Unfortunately, as is often the case in jobsite situations, that just wasn't possible due to time and cost constraints at the worksite. We all know that slowing down production always increases costs and headaches.

The solution was the Elasco MG5200 Cable Protector, a solid cast polyurethane cable protector designed to withstand vehicle and pedestrian traffic of all types while protecting the cables passing through the internal channels.

Steve later said, "After the 150 ton truck rolled across the ramps, the portion of the cable that was within the channels was unharmed...we were thoroughly impressed as neither the cables or cable protectors were damaged. We feel comfortable that whenever needed in the future, we will use Elasco Products cable guards to protect our coaxial and fiber optic cables."

From Heavy Duty to Light Duty applications, Elasco manufactures high quality solid cast polyurethane cable guards and cable drop-overs that are both tough and durable. Elasco guards and drop-overs can be used to protect pipes, cables,

fiber optics and all types of wires. Whether it be a 4" heavy duty hose or 0.5" wire that needs to be protected, Elasco's products offer a variety of industries the solution to the protection needs.

Elasco Cable Guards are constructed with a solid cast polyurethane base and lid that are connected by a reinforced fiberglass rod that won't rust or corrode so it will easily endure natural and man-made elements and it's also compliant with safety requirements. The cable guards are not biodegradable, non-hazardous and are compliant with OSHA and NEC.

When compared to other materials such as rubber, plastic and metal, Elasco Cable Guards offer stronger abrasion and corrosion resistance, higher load bearing capacity and are less likely to tear or crack. The bottom line is this, when you buy a better product it generally lasts longer and works more effectively thereby saving you more money in the long run – not to mention reducing headaches and costs today.

Other benefits are easy transportation and simple installation, Elasco products are configured to meet a variety of cable protection situations from indoor pedestrian traffic to preventing damage from extremely heavy vehicles. Elasco has been protecting cable and wires for over 25 years which is why they have the confidence to back all their products with a lifetime warranty. Best of all, all their products are made in the USA.

www.elascoproducts.com





DEMO
ICUEE
EXPO

September 29 - October 1, 2015
Louisville, KY

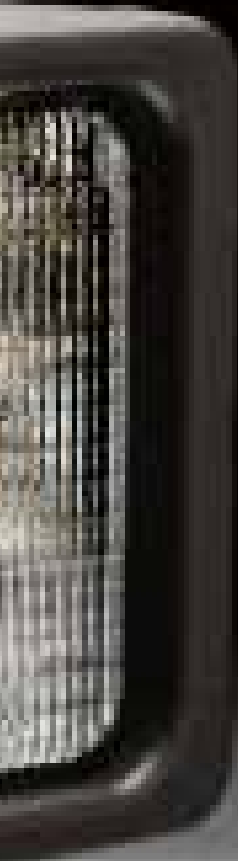


OPERATE the newest equipment at
the **LARGEST** tradeshow for the utility industry
featuring over **850 EXHIBITORS**

Get your badge now at www.icuee.com to save 50%



GOLIGHT'S NEW MODEL GXL 4021 LED WORK LIGHT IS ULTRA BRIGHT, AMAZINGLY TOUGH AND READY FOR SUPER-DUTY SERVICE



With 4,500 max lumens emanating from its compact aluminum housing, the Golight model GXL 4021 LED work light delivers more lumens per square inch and takes punishment up to an astonishing 40 Gs

Golight, Inc., a world leader in pan & tilt remote-controlled lighting technology, announced the introduction of its sturdy new model GXL 4021 fixed-position LED work light today. The new light's fascia measures just four and a half inches wide by four inches tall, has a depth of only three and a half inches and comes with a two-inch stainless steel mounting bracket. The GXL 4021 represents the company's expansion of its permanently

mounted, manually adjustable LED work lights and is the smallest of the four lights it now offers in that category.

The light's small size and stunning illumination power is a byproduct of its space-saving "LED cluster" design, combining four clusters of four high-powered LEDs to generate a maximum output of 4,500 lumens. The raw power of the light's 16 LEDs is controlled through the use of three rugged yet versatile polycarbonate lenses. Changing lenses is easy and users can switch between spot, flood and combination spot/flood lenses as the need arises.

The powerful new LED work light has been condensed into

a deceptively small format that makes it an extremely versatile light source that is easy to mount virtually anywhere on a vehicle. The light's hardened aluminum housing is ultra-resilient, and combined with the light's solid-state electronics, has been engineered for extreme super-duty service with an impact g-force survivability rating of 40 Gs.

"We're excited to augment our fixed-position light offering with this exciting new and competitively priced light," Jason Repass, southwest regional sales manager at Golight, said. "Based on our MSRP, the new model GXL 4021 fixed-position LED work light will have one of the industry's lowest cost-per-lumen ratios."

The new light is the result of Golight's continuous marketplace evaluation and more than 20 years of advanced electronic and optical engineering in the remote-controlled work light arena. Qualitative customer feedback told Golight that the new fixed-position GXL 4021 light would be a perfect complement to its pan & tilt vehicle lighting products.

"We've been using Golight remote-controlled and fixed-position lights on our bucket, digger and pickup trucks for more than a decade," Stewart Hamilton, general foreman for The Hydaker-Wheatlake Company, said. "I really like the small footprint and high-intensity LED light output of this new LED

work light and I can envision many suitable applications for it."

Golight leveraged its experience in LED thermal management and optic design, as well as their knowledge of military lighting applications, to bring this highly robust, compact light to market. The light, which is one of the most powerful work lights its size, delivers a pleasing light that closely approximates the color temperature of sunlight and has a service rating in the range of 30,000 hours.

"Golight's new model GXL 4021 fixed-position LED work light is a great addition to the company's product line and offers us more flexibility in planning the lighting configurations for our

service bodies," Ed Heck, equipment sales manager for Titan Truck, said. "This gives us another valuable tool to offer our fleet customers and makes our vehicles more effective for them."

The new model GXL 4021 fixed-position LED work light is expected to attract significant attention across a wide variety of work truck-related markets, including telecommunication, oilfield, railroad, municipal and public and private utility.

The 12-volt light draws only 4.2 amps, features over-voltage and reverse polarity protection and comes with a five-year unlimited warranty. All Golight products are supported by an unparalleled customer service department that prides itself on accessibility and effectiveness.

The standard GXL 4021 product package includes an LED work light with a flood lens, a 12-inch wire lead with DT connector and a stainless steel mounting bracket. Accessory package 4081 includes a spot lens, accessory package 4082 includes a flood lens and accessory package 4083 includes a combination spot/flood lens.

"The new model GXL 4021 fixed-position LED work light is symbolic of our mission: to deliver durable, versatile performance, guaranteed," Repass said.

www.golight.com



Get Cool!



Extend transformer life!

Increase transformer capacity up to 166%!

- expert technical assistance
- low sound levels
- energy-efficient motors
- large inventory
- one-piece cast aluminum blades
- galvanized or stainless steel guards





quality engineered, performance tested

p.o. box 187 germantown, wisconsin 53022

262.355.3318

www.krenzvent.com



PELSUE®

TRADITION • INNOVATION

Vehicle Upfitting and Custom Trailers



Truck Chassis



Cargo Vans



High-Roof Vans



Fiberlite XL Trailer



Fiberlite POD Trailer



Shawmut Equipment

Serving the Equipment Industry Since 1957

(508) 238 - 1900

SALES ● RENTALS ● PARTS ● SERVICE



Tracked Buckets



Tracked Digger Derricks



Tracked Cranes



Tele-Boom Crawler Cranes



Boom Trucks



Industrial Cranes



Rough Terrain Cranes



Rubber Track Carriers

Shawmut Offers:

- Superior Customer Service
- Three Full Service Facilities
- Factory Trained Technicians
- 24 - Hour On Site Service
- Latest Diagnostic Equipment
- Extensive Parts Inventory

CONNECTICUT
20 Tolland Turnpike
Manchester, CT 06042
Toll Free: (800) 829-4161
Office: (860) 643-4161

MASSACHUSETTS
136 Eastman Street
South Easton, MA 02375
Toll Free: (877) 526-9213
Office: (508) 238-1900

NEW BRUNSWICK
327 King William Road
Saint John, NB E2M 7C9
Toll Free: (888) 594-8444
Office: (506) 635-1550

www.shawmutequipment.com

New Air Accessories from Chicago Pneumatics

Chicago Pneumatic has launched a new range of air line accessories for its handheld pneumatic tools. The new Air Flex swivel connectors, which connect the air hose to the base of the tool, make rigid hoses more flexible and multi-directional. The use of the Air Flex swivel connector helps to improve MRO professionals' work ergonomics, while providing users with a 360° rotational capacity to increase productivity and ease of use in difficult to reach places.



The Air Flex swivel connector range is available in three sizes; 1/4" (with or without a cover), 3/8" and a 1/2" and is capable of withstanding air pressure from 25 cfm up to 74cfm (12 l/s up to 35 l/s). The additional flexibility that the new connectors provide ensures that the air hose does not become twisted and remains in the ideal working position, helping to reduce the risk of tendinitis for the user.

www.cp.com/en/whatwedo/powertools/accessories/airline.aspx

Megger HT1000/2 Handheld Tester

Megger, one of the world's leading manufacturers and suppliers of test equipment and measuring instruments for electrical power applications, has enhanced its HT1000/2 series of handheld testers to perform bonded pair testing. The HT1000/2 copper wire analyzer easily executes vectored DSL testing for VDSL2 lines.

Ideal for use by maintenance technicians in the telecommunications industry, this copper wire analyzer combines all the functions needed to perform critical and comprehensive cable testing. With a touch of a button, the HT1000/2 can perform many of the 26 standard tests between the technician's central office and the subscriber's locale.

The HT1000/2 includes auto tests with an incremental pair test program that can be configured by the user for up to eight series of tests.



www.meggerblog.com

steplite[®]X
BOOTS

Flexible & slip resistant to -4°F

Standard or Steel Toe

Chemical Resistant

Lightweight

Insulating

Long Lasting

Size: Toe is ASTM F2413-11 Compliant.

The Coburn Company, Inc.
 800 776 7042 coburn.com

WHAT IF ONE SIMPLE TOOL COULD HELP REDUCE LINEMEN INJURIES?

1. LOWER INCIDENCE OF ARC FLASH AND ARC FAULT EVENTS
2. CUT ACCIDENTAL CONTACTS
3. PREVENT RUBBER GLOVE PUNCTURES
4. REDUCE LINE WORKER BURNS AND SUFFERING
5. PREVENT LOST TIME AND EXPENSE DUE TO INJURY, COLLATERAL DAMAGE, ACCIDENT INVESTIGATIONS, WORKMAN'S COMP AND CUSTOMER OUTAGES
6. SUSTAIN AND IMPROVE SAFETY PERFORMANCE NUMBERS

TWISTOOL™

TWISTOOL will do these things and more.
 Phone 641-425-2655 and ask for a free trial
 Check us out at: www.twistool.com

**Weather Resistant
Solid Brass Padlocks**
Made to your specifications in the U.S.A.

HERCULO LOCK
Hercules Industries, U.S.A.

HERCULES INDUSTRIES, INC.
Manufacturer of HERCULO LOCK Padlocks
P.O. Box 197 • Prospect, Ohio 43342
Toll Free: 1-800-345-2590
Fax: (740) 494-2274
www.HERCULOLOCK.com

The New XAS 90 Air Compressor from Atlas Copco



Atlas Copco launched its XAS 90 air compressor, which is a cost-effective option for utility and pneumatic-tool applications demanding as much as 88 cubic feet per minute of air power. The compressor, like all Atlas Copco portable air compressors, keeps cost of ownership low due to its simple maintenance and minimal fuel consumption.

“We took day-to-day functionality and ROI into account when developing the XAS 90,” said Rich Elliott, Atlas Copco product manager, low-pressure air compressors. “Aside from bringing no-nonsense power to one-person, one-tool jobs, it saves users time and money.”

Atlas Copco’s HardHat™ canopy, which is made of highly durable, weather-resistant polyethylene, protects the compressor’s 24-horsepower Kubota diesel engine from dust and debris to minimize repairs. The canopy also resists corrosion and fading, virtually eliminating the need to repaint while contributing to its low cost of ownership and high resale value.

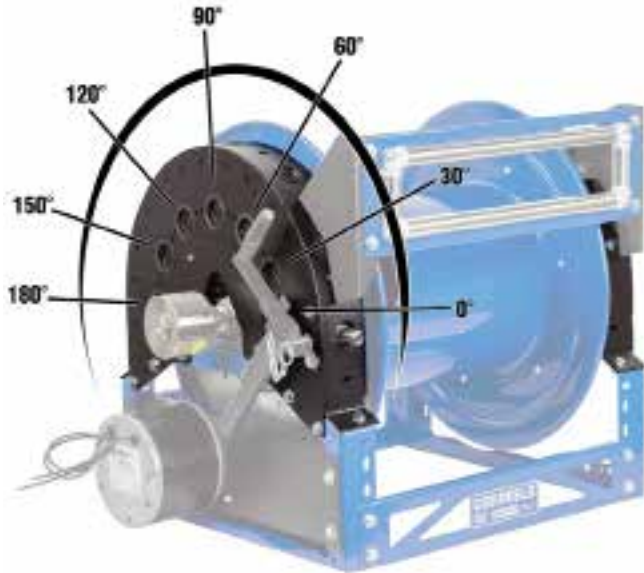
www.atlascopco.us/usus

<p>MDR24 BACK-FILLER</p>	<p>BC203 BRUSH CUTTER</p>
<p>R24C COMPOSTER</p>	<p>S77 SNOW THROWER</p>

BROWN BEAR

Brown Bear Corporation
P.O. Box 29 • Corning, Iowa 50841 • 641-316-0425 • sales1@brownbearcorp.com
See video clips @ www.youtube.com/brownbear6294

Coxreels 1600 Series



Coxreels® 1600 Series features the most versatile symmetric reel design in the industry. This feature-rich reel has a wide array of components and configurations, including the Universal Bracket Kit, providing a robust reeling platform for any conceivable application and making it the most versatile design available on the market today.

The Universal Bracket, made from 12 gauge, heavy-duty, powder-coated steel, functions as a chain/gear guard and allows for four versatile payout degrees (0°, 30°, 60°, and 90°) for mounting rewind crank, three or four way roller guide, and a three-way pin on either side of the reel. The Universal Bracket Kit also includes a removable center guard cap for easy bearing access.

The Universal Bracket Kit was designed to meet the most demanding requirements in the industry and fit any allocated space in virtually all equipment areas and applications.

For further information on the Coxreels® product line, contact Customer Service at (800) 269-7335.

www.coxreels.com

The SorbWeb™ Plus Solution

OIL REACTIVE FABRIC

A Better Solution

Engineering Secondary Oil Containment System allows water to pass through but seals on contact with oil.

★ TRUE ★

1.866.269.8275 x 0288

www.theSorbWebPlus.com

Optimize Fleet Productivity

CFA

CFA Software

FLEET MAINTENANCE & INVENTORY CONTROL SOFTWARE SOLUTIONS SINCE 1969

CFAWin

- ✓ Evaluate & Improve Fuel Economy
- ✓ Automate PM Tracking
- ✓ Increase Warranty Recovery
- ✓ Analyze Life-Cycle Costs & Trends

Why CFA Software?

- ◆ Over 40 Years Experience
- ◆ Superior Product Support
- ◆ Low TCO
- ◆ Free Implementation Assistance

Shop Floor

- ✓ Technician-Friendly Interface
- ✓ Allows RO Entry In Shop Environment
- ✓ Repair Time Clock Feature
- ✓ View Equipment Repair History

e-Service Request

- ✓ Submit & View Service Requests Online
- ✓ Provide Audit Trail of Submitted Requests
- ✓ Reduce & Automate Data Entry

Call for
a FREE
Demo!

CFA Software

800.437.6001 • www.CFASoftware.com

Larson Electronics ELP-LP-24-LED Low Profile Linear Explosion Proof LED



Industrial lighting specialist Larson Electronics has announced the release of a 52 watt explosion proof low profile LED light fixture that provides operators with a powerful and energy efficient alternative to traditional hazardous location luminaries.

The EPL-LP-24-LED from Larson Electronics is an integrated low profile linear explosion proof LED light fixture with a unique design. Instead of using diffused glass, optics or reflectors to distribute the light, Larson Electronics has positioned the boards within the fixture to provide a wide area light without sacrificing quality or light output. Two offset LED assemblies within the fixture allow this explosion proof linear lamp to provide a brilliant 100° horizontal beam spread and 140° vertical beam spread. The LED assembly is protected behind a tempered borosilicate glass tube that is protected by an aluminum wire guard to prevent from accidental damage to the light. Measuring only 5" in width, this fixture takes up half the surface area as standard two foot, two lamp fixtures.

www.larsonelectronics.com



Call for your Elk River Distributor today!

Elk River, Inc.
Personal Fall Protection

NoPac Lanyard
1-1/4" x 6'
Zsnap
Zeebar hook
65321-65326

Iron Eagle Harness
Three steel D rings
with adjustable
shoulder straps

*durability
comfort
safety*

Ascend safely like an Eagle



www.elkriver.com 800.633.3954

“Don’t Make a “Shovel Choice” When Selecting a Transport Vehicle”

You wouldn't choose a shovel to dig a trench, when a mini-excavator is available to do the job faster, easier, safer and with greater overall economy.

So why choose a roll-back instead of a Retriever?



Developed in the 1960's... and not much has changed since.



Loading construction equipment onto a transport truck is inherently hazardous, made even more so by the roll-back's steep load angle.

To make it really dangerous, add some rain or snow, maybe a little oil or any kind of machine malfunction. Relying on the parking brake to hold a heavy machine in place on a steep deck is another unnecessary risk.

Retriever eliminates those risks, while speeding the loading/unloading process.

Retriever was introduced in 2002... and it's been getting better every day.



The First New Idea in Equipment Transport in 50 Years

Retriever Is a Simpler, Easier-To-Use, Safer and More Economical Way to Get The Job Done.

Patented Curved and Hinged Deck

Low Deck Height/Shallow Loading Angle

Exclusives! No Hydraulics!
No Idle™ System

Greater Payload Capacity

Fewer Moving Parts

E-Primed plus Powder Coat Finish

Aircraft Carrier Quality Slip-Resistant Deck



There Isn't a Competitor That Can Match Us

RETRIEVER by VERSATRAN^{INC.}

IDEAL 61-797 Digital Insulation Meter

Oil, dirt, excessive heat or cold, vibration and moisture will damage electrical insulation, threatening heavy equipment operation and endangering employee safety. Combat this serious problem with the IDEAL 61-797 Digital Insulation Meter, a rugged, industrial-grade tester designed for commissioning, routine troubleshooting and preventive maintenance to identify whether insulation is performing at an effective, safe level.

Periodic testing of insulation for signs of deterioration will spot breakdowns in electrical systems, generators, switchgear and motor windings before failure occurs.

Using the 61-797, the technician will quickly determine the integrity of insulation in new and existing wiring by identifying capacitive, absorption and leakage current at multiple test voltages (50V, 100V, 250V, 500V and 1000V) and resistance up to 20G ohms. In addition, this versatile tester measures earth-bond resistance to assure verification of the continuity of the protective bonding, automatically senses and displays AC/DC voltage to 600V, plus calculates the Polarization Index (PI) and Dielectric Absorption Ratio (DAR).

www.idealind.com



PACIFIC TRADING & RECYCLING LLC.
A LEADER IN METER RECYCLING!

We want YOUR
scrap meters!

WILL PAY
TOP
DOLLAR
PER
POUND...

WE PAY THE FREIGHT!

300 Industrial Pkwy.
Gadsden, AL 35903
256-442-3555 office
256-442-3670 fax

For more information call or email Caleb Frey
cfrey@pacifictradingrecycling.com

Visit our website
www.pacifictradingrecycling.com

Protect yourself from "Arc Flash"



ARC FLASH HOOD WITH V¹² HIGH-VOLUME VENTILATOR Compact. Powerful. Reliable

Our V¹² High-Volume Ventilator boasts an unexpectedly quiet, high output (35+ CFM) turbine fan to cool and circulate the ambient air within the hood. Fully protected beneath it's durable ABS shell and added fabric layering, the V¹² High-Volume Ventilator isn't just compliant, it's superior.



40 CAL/CM2 ULTRALIGHT CLOTHING BY OTEX

Our new dual-layer Ultralight clothing takes advantage of DuPont's® dedication to scientific advancement and Westex's® industry leading dependability. Weighing in 37% lighter than traditional HRC4 PPE, our Ultralight Clothing is the most innovative contender in the lightweight arena.

HYBRID LAYERING

Combined Fabric Weight: 14 oz

Outer Layer: DuPont® Protera
Color: Navy

Inner Layer: Westex Ultrasoft
Color: Safety Orange

FOR FREE INFO, CIRCLE 20 ON READER SERVICE CARD

CALL US TODAY

(703) 367-0404

OR VISIT OUR ONLINE ELECTRICAL SAFETY EQUIPMENT STORE
www.millersafetyltd.com



Terex now offers an insulated, retractable 4th section on its popular General™ 80 digger derricks. The first of its kind in the industry, the new 4th section from Terex is made from fiberglass, replacing a non-insulated, steel 4th section on previous models, is designed to meet the industry's demand for increased insulated digger derrick reach heights. With the insulated 4th section, crews are able to set poles and perform line work with an 80-ft digger derrick.



The new 4th section is designed to enable operators to extend and retract in minutes using the winch line. Terex engineered it to balance on a series of boom extension rollers. This design allows it to be rolled in and out easily. The ability to retract the 4th section fully into the other boom protects the new 4th section from potential damage when it is not in use.

A video walk-through of the new Terex fiberglass 4th section, highlighting the features and benefits of this innovative option, is available and can be viewed at: <http://youtu.be/qczzAfh-JoE>

www.terex.com/utilities



DD
Diamond Drill Bits


Transit


Storm


Lightning


Cyclone


Volcano

- Burn less fuel - approximately 100 to 200 gallons a day air versus water savings
- Faster penetration rates that help you finish your job faster and be more of a competitive driller
- Smoother drilling which saves you money on wear and tear of your drilling equipment
- Saving on employee costs
- Bit cost savings
- Bit life expectancy is the highest in the industry
- Bit can be repaired multiple times and can sufficiently reduce the cost of your job





FIRST CORP
INTERNATIONAL INC.

6000 Kaltenbrun Rd
Fort Worth, Texas 76119
Tel: +1-817-561-5040
Fax: +1-817-561-5951
www.ddibits.com

Connect with us on Facebook







- State of the art PDC Bits & Hole Openers
- Environmental, Geothermal, HDD, Mining, Oil & Gas, Water & Sewer, Water Well
- Experts to help you find the right bit to save you time & money
- # 1 repair shop rated by customers
- Call today to order your PDC Hole Openers & PDC Drill Bits
- PDC Drill Bit sizes range from 2 15/16" up to 17"
- PDC Hole Opener sizes range from 7" up to 36"



ISOLATED PROTECTION TO PREVENT GROUND LOOPS



The Lind Isolated Power Adapter provides a regulated, isolated DC output to power laptops, thin clients, monitors and other devices from a DC voltage source. Output and input DC returns are isolated, allowing the prevention of possible electrical noise caused by ground loops.

Lind's Isolated Power Adapter is built to work with most existing laptop brands and models. These adapters can also be designed for custom applications. Contact Lind to discuss solutions for your exact mobile power needs.

The Isolated Power Adapter's electronics are enclosed by an epoxy-sealed case to protect the internal circuits from damage caused by shock and/or vibration. Its durable construction withstands extensive wear and tear in any harsh mobile environment. Snap-in connectors make replacing missing or damaged cables from anywhere in the field easy and hassle-free.



POWER SPECIALISTS FOR
MOBILE COMPUTING

Company	Pg.	Website
American Pipe & Plastics	IFC	www.ampipe.com
Bone Safety	16	www.bonesafety.com
Brown Bear Co	28	www.brownbearcorp.com
Buccaneer Rope	10	www.bucrope.com
California Turbo	12	www.californiaturbo.com
CFA Software	29	www.cfsoftware.com
Coburn Co	27	www.coburn.com
Condux	2	www.condux.com
Diamond Drilling Industries	34	www.ddibits.com
Elasco Products	11	www.elascopeproducts.com
Elk River	30	www.elkriver.com
Golight	13	www.golight.com
Herculock	28	www.herculock.com
ICUEE	21	www.icuee.com
Krenz Vent	24	www.krenzvent.com
Larson	7	www.larsonelectronics.com
Lind Electronics	35	www.lindelectronics.com
LineWise	17	www.line-wise.com
Miller Safety	33	www.millersafetyltd.com
Morooka	6	www.morookacarriers.com
MSA Safety	1	www.msasafety.com
Nesco	BC	www.nescorentals.com
Pacific Trading & Recycling LLC	32	www.pacifictradingrecycling.com
Pelsue	25	www.pelsue.com
Precision Sales	15	www.alternatefuel.com
Retriever by Verstran	31	www.versatraninc.com
Ring Power Corporation	5	www.ringpower.com
Shawmut	26	www.shawmutedequipment.com
Sorbweb	29	www.sorbwebplus.com
Surge Suppression	9	www.surgesuppression.com
Time Versalift	3	www.versalift.com
ThermOweld	IBC	www.thermoweld.com
Twistool	27	www.twistool.com
Yale Cordage	36	www.yalecordage.com



Unitrex XS

The leading alternative to hard-line!!!

- Light weight
- Contains Spectra™ by Honeywell high-tech fiber
- Corrosion free
- Strength & durability of wire without the conductivity
- Low maintenance

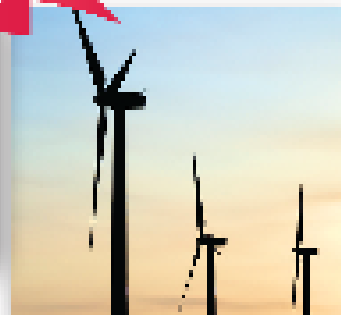
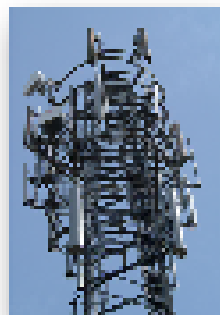
Bring your stringing methodology *FORWARD*.

Unitrex XS makes stringing line easier, safer, and faster!!!



P: (207) 282-3396 • F: (207) 282-4620 • www.yalecordage.com
77 Industrial Park Road, Saco, ME 04072

Be sure to check us out at NECA Oct. 3-6, Booth 712



Grounding Solutions

thermOweld® is a global leader in grounding products and services since 1958. Whether it's our exothermic expertise, the complete grounding product lines we offer, or our UL lightning protection, we have the speed and quality you need with the product customization you desire.

We are an integral part of the global infrastructure. From electrical substations to telecom sites, to solar and wind renewable power installations, **thermOweld®** is your mission-critical grounding, lightning protection, and related products source. Today we proudly ship from our USA factories to over 55 countries worldwide. How can we help you?

thermOweld®



Connecting Power to Your World



www.thermOweld.com

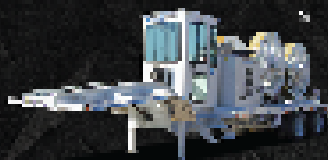
NESCO

SUPERIOR

CUSTOMER
SERVICE

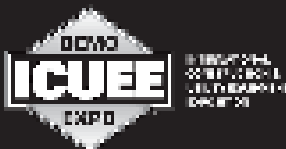
RESPONSIVENESS AND SUPPORT SECOND TO NONE

NESCO Rentals isn't just a premier provider of utility rental equipment, but a leader in responsiveness and support for all customers. Dedicated rental and service teams, combined with one of the industry's largest rental fleets, ensure NESCO meets your job site needs. Call us now to experience our superior customer service.



Visit our website, build a quote, outfit your vehicles and get to work.

(800) 252-0043 | www.nescorentals.com



Visit us at ICUEE
booth L-210.

