

THE

Nov/Dec 2015

UTILITYSOURCE

Products and Services for Today's Electric, Telecom, and CATV Utilities



Meet Utilities'
New Fully Rugged
Android Champion

Secondary Oil
Containment

SERVICE VEHICLE
INTERIOR UPFITTING

Elliott Equipment Company's
New E-Line Platforms

NEW FOR 2016



Venturo Van Crane

With the increased demand of work vans in the industry, Venco Venturo has developed a *small crane* application that will increase productivity at any job site. Designed for use within the rear cargo area, the new van crane from Venturo will retain the rugged designs that have set the standard of our cranes for generations.

To learn more, visit www.venturo.com.



EXCELLENCE
QUALITY
Publisher's Choice

TRUCK-MOUNTED CRANES, CRANE BODIES & HOISTS



VENCO VENTURO INDUSTRIES LLC

12110 BEST PLACE | CINCINNATI, OHIO 45241

800-226-2238 | info@venturo.com | www.venturo.com





C100

- Variable Feed Rate
- 27hp. PTO Power
- Reachable and Flexible PTO Connections
- Rear Wheel and Hydraulic Wash
- Special Protection Coating System



RET150



- 10000lb. Ground Payload Capacity
- 380hp. Cummins Diesel
- 33" x 16" Rubber Tracks
- Comfortable Operator's Cabin
- Available with Dump Bed, Flat Bed, or Forks

AVAILABLE FOR SALE OR RENT

RAYCO HAS YOU COVERED. WE OFFER A COMPLETE LINE OF FORESTRY MULCHERS, STUMP CUTTERS, BRUSH CHIPPERS, HORIZONTAL GRINDERS AND CRAWLER TRUCKS.

CALL • 800.392.2686

VISIT • RAYCOMFG.COM

The Utility Source Contents • Nov/Dec 2015

PG 4	Industry News
PG 10	Case Study: SorbWebTMPlus Secondary Oil Containment
PG 14	Condux Tesmec: AFB506 Puller-Tensioner
PG 18	Meet Utilities' New Fully Rugged Android Champion
PG 20	Company Profile: Shawmut Equipment Company
PG 22	Company Profile: Surge Suppression
PG 24	Elliott Equipment Company's New E-Line Aerial Work Platforms for the 21st Century Lineman
PG 28	Service Vehicle Interior Upfitting: Getting the Right Layout for Your Mobile Workshop
PG 32	Nesco Rentals Presents the Right Track System
PG 34	Company Profile: Pelsue
PG 36	Company Profile: Time VersaLift
PG 38	New Product News
PG 40	Ad Index

THE UTILITYSOURCE

Products and Services for Today's Electric, Telecom, and CATV Utilities

Vol. 15- Issue 11

GROUP PUBLISHER	Dave Gomez 205-358-7913 dave@handfmedia.net
ASSOCIATE GROUP PUBLISHER	Rick Harless 205-624-3794 rick@handfmedia.net
EDITOR	Annie McGilvray annie@handfmedia.net
CREATIVE/WEB DIRECTOR	Jacklyn Greenhill jacklyn@handfmedia.net
ADMINISTRATIVE DIRECTOR	Steven Hobson steven@handfmedia.net



APS 75 HYDRAULIC UNDERGROUND PULLING TRAILER AVAILABLE WITH AND WITHOUT AIR COMPRESSOR & HYDRAULIC JACES

- ✓ 7,500 LBS OF PULL FORCE
- ✓ 2,600 FT OF ANTI-TWIST ROPE
- ✓ EASY TO OPERATE INSTRUMENT PANEL
- ✓ INSULATED FOR NOISE SUPPRESSION



3400 HINDWOOD DRIVE | BIRMINGHAM, AL 35226 | 205-988-1000 | WWW.CONDEX.COM

CEO
Christy Hobson

PRESIDENT
Glen Hobson



Executive and Advertising Offices

PO Box 1568
Pelham, AL 35124

phone: 205-441-5591 fax: 205-624-3354
www.theutilitysource.net
glen@handfmedia.net

The Utility Source™ is published twelve times a year on a monthly basis by H&F Media Group, Inc. The Utility Source™ is distributed free to qualified subscribers. Non-qualified subscription rates are \$57.00 per year in the U.S. and Canada and \$84.00 per year for foreign subscribers (surface mail). U.S. Postage paid at Birmingham, Alabama and additional mailing offices.

The Utility Source™ is distributed to Power, Telcom and CATV Utilities and Utility Contractors throughout the USA. Publisher is not liable for all content (including editorial and illustrations provided by advertisers) of advertisements published and does not accept responsibility for any claims made against the publisher. It is the advertiser's or agency's responsibility to obtain appropriate releases on any item or individuals pictured in an advertisement. Reproduction of this magazine in whole or in part is prohibited without prior written permission from the publisher.

POSTMASTER: Send address changes to
H&F Media Group, Inc., P.O. Box 1568
Pelham, AL 35124
PRINTED IN THE USA

Rugged Dependability

STANDARD IN EVERY MACHINE WE BUILD!

Hogg & Davis has been proudly manufacturing utility line equipment for more than half a century.



Our trusted products are part of the fleets and tool cribs of nearly every investor-owned power and communications company in the United States and Beyond.



HOGG & DAVIS, Inc.

HOGG & DAVIS, Inc.

3800 EAGLE LOOP • ORILL, OR 97044

TEL 541.854.1001 • FAX 541.854.1080

WWW.HOGGDAVIS.COM

RMP Powertrain Solutions Renamed Holman Parts Distribution

RMP Powertrain Solutions, an industry leading supplier of original equipment (OE) and aftermarket powertrain products, is pleased to announce that it will now be operating as Holman Parts Distribution®. The name change is part of a larger strategic effort that will allow the company to maximize strategic synergies with its parent company, Holman Automotive Group, Inc., which will in turn support the company's continued success in existing markets as well as growth in new markets. The company also debuted its newly refreshed website: www.holmanparts.com.

"This is an exciting step forward for Holman Parts Distribution," said President Anne Williams. "The company has a strong track record for providing the best OE and aftermarket powertrain products to a wide range of industries and businesses. While we have always had the support of our parent company, Holman Automotive Group Inc., this new alignment – both in name and in strategic direction – will allow us to leverage the knowledge, talent and resources of the entire company to the benefit of our existing customers and will allow us to expand into new markets."

www.holmanparts.com

Manitou Americas Promotes Eric Burkhammer to Vice President of Sales & Marketing

Manitou Americas is pleased to announce the promotion of Mr. Eric Burkhammer to the position of Vice President of Sales and Marketing for Manitou Americas, Inc., a wholly-owned subsidiary of Manitou BF located in Ancenis, France. Effective immediately Eric will be responsible for the sales and marketing of the MANITOU, GEHL, MUSTANG and EDGE brands in the US and Canada.



Mr. Burkhammer has over 35 years of experience in the industry, with 15 of those years selling and marketing the Manitou, Gehl and Mustang brands. The remainder of his experience includes the sales and marketing responsibilities of other well-known equipment manufacturers and dealerships in the construction and rental industries.

"As our business and markets evolve," said Dan Miller, President of Manitou Group Compact Equipment Division and CEO of Manitou Americas. "Eric's experiences in this industry will positively enable us to maximize opportunities for future growth."

www.manitou.com

Bertling Equipment Rental, LLC Now Part of the Gehl Dealer Network

Gehl, a leading manufacturer of compact equipment for agriculture and construction markets, is pleased to welcome Bertling Equipment Rental, LLC to the Gehl dealer network. Bertling Equipment Rental provides expert sales and service to South Central Texas for Gehl skid loaders, track loaders, compact excavators and telescopic handlers.

Gehl is a leading manufacturer and distributor of skid loaders, track loaders, articulated loaders, compact excavators and telescopic handlers used worldwide in construction and agricultural applications. Founded in 1859, the company - now Manitou Americas - is headquartered in West Bend, Wis. For more information, visit www.gehl.com or contact Manitou Americas at 262-334-9461.

www.gehl.com

MaxLite Recognized at 2015 Lighting For Tomorrow Competition

MaxLite was recognized with an Honorable Mention in the 2015 Lighting for Tomorrow competition for its LED Adjustable Downlight Retrofit with sunset-like dimming technology.



Winners of the awards were announced in a ceremony held during the American Lighting Association (ALA) Annual Conference on October 3, 2015 in Huntington Beach, CA. The Lighting for Tomorrow awards are organized by the ALA, the Consortium for Energy Efficiency (CEE) and Underwriters Laboratories (UL).

www.maxlite.com

Transmission • Distribution • Tree • Sign & Signal • Boom Truck & More

Publisher's Choice



Ring Power[®]

Utility Equipment



Rent the right tools for YOUR job

When installing infrastructure and maintaining facilities, we are dedicated to providing you with the highest quality equipment. Working with Ring Power Utility Equipment gives you access to a wide range of products, length and load capacity, and your fleet. Short-term, long-term or Rental-Purchase options available.



Mike Beauregard • 321.403.6776 • Mike.Beauregard@RingPower.com • www.RingPower.com

Takeuchi- US Hires Kent Cantrell, Northwest Regional Product Manager

Takeuchi-US, a global innovation leader in compact equipment, has announced that they have hired Kent Cantrell as their Northwest Regional Product Manager. Kent will be responsible for all development and activity for equipment sales within the Northwest region. His primary responsibilities include product training for dealer sales staff, assisting with equipment demonstrations, interaction with end users, and supporting efforts in retailing, training, and growing the Takeuchi business in his territory.

“We are pleased to announce the appointment of Kent to our team,” said Kim Robinson, Director of Sales, Takeuchi-US. “Kent has a very strong background in the compact equipment industry, along with plenty of experience with our product lines. He has a dedicated work ethic that aligns with our service and support efforts, as well as those of our dealers and customers in his territory.”



www.takeuchi-us.com

NTEA Launches New Social Media Sites



NTEA – The Association for the Work Truck Industry, has launched two new social media destinations to help industry professionals better connect with The Work Truck Show® 2016. Users can “like” a dedicated Work Truck Show Facebook page to see the latest Show news, photos and videos, while exhibitors can follow @WTS_exhibitors on Twitter to receive important updates as the event approaches.

The Work Truck Show is North America’s largest work truck event. Produced annually by NTEA, the 2016 Show will be held March 2–4 at the Indiana Convention Center in Indianapolis, Indiana. Educational programming, including the Green Truck Summit, begins March 1.

While www.facebook.com/TheWorkTruckShow is dedicated to Work Truck Show content, general NTEA and industry news can still be found at www.facebook.com/NTEA.TheAssociationForTheWorkTruckIndustry. On Twitter, the new @WTS_exhibitors handle will complement NTEA’s existing @WorkTruckShow and @NTEANews accounts.

www.facebook.com/NTEA

Get Cool!



Extend transformer life!

Increase transformer capacity up to 166%!

- expert technical assistance
- low sound levels
- energy-efficient motors
- large inventory
- one-piece cast aluminum blades
- galvanized or stainless steel guards




P.O. Box 187 Germantown, Wisconsin 53002

262.355.3318

www.krenzvent.com

The SorbWeb™ Plus

Solution

OIL REACTIVE FABRIC

A Better Solution

Engineered Secondary Oil Containment System allows water to pass through but seals on contact with oil.

- Robust engineered solution
- Our Oilmat has the highest polymer loading in the industry with a minimum 2500 g/m² or 73.7 oz/yd²
- Installations follow a rigorous quality control protocol to ensure the containment is properly installed
- Designed to allow for vehicle access up to a max of 26,000 Kg/group of axle



1.866.269.8275 x 0235 | www.albarrie.com

Promotions at Terex Utilities

Terex Utilities is pleased to announce the appointment of Justin Pinkalla to the position of Strategic Account Manager for the Northern sales territory and the additions of Dennis Nelson and Tyler Walford as Territory Account Managers to the field sales team for the Western and Southern sales regions respectively. These gentlemen will support all Terex Utilities products and services to a wide-range of customers, including investor-owned utilities, electric cooperatives, municipalities and utility contractors. They will work with existing customers to meet their specific needs and develop new customer opportunities.

“We are pleased to welcome Dennis, Justin and Tyler to the sales team,” says Vice President of Sales and Marketing, Jim Lohan. “As we continue to offer products, services and programs to meet the growing needs of our customers, our sales force plays an extremely valuable role in finding, developing and maintaining these relationships. These gentlemen’s unique skill sets and experiences will add to and complement the wealth of industry expertise and knowledge already in place within our sales team.”

www.terex.com/utilities

New Focus Brought to Tigercat’s Expanding Pacific Northwest Customer Base



Based in Elmira, Oregon, Nate McMurtrey will focus on providing after-sales technical support to Tigercat’s expanding customer base in the Pacific Northwest.

Nate has been working on product support for heavy-duty equipment for over a decade with numerous qualifications in engine diagnostic troubleshooting and repair as well as electronic engine control troubleshooting. Nate brings extensive mechanical, electrical and hydraulic knowledge and experience to the landing through his work as a Field Service Technician for Tigercat dealer Triad Machinery for seven years focusing on Tigercat 870 and 830 track feller bunchers. Nate graduated top of his class from the rigorous Heavy Truck Repair and Diesel Core Program at Wyoming Technical Institute.

Nate looks forward to supporting the Tigercat product line to the best of his abilities through technical phone support and hands on involvement, ultimately sharing his passion for technical assistance with his coworkers and customers.

www.tigercat.com

ARPI of USA™
HOME OF THE
POWER WIRE STRIPPER™

<p>COMC 14awg-600mcm</p> 	<p>RES 16awg-250mcm</p> <p>Processes up to 4,200 feet per hour.</p> <p>Strips plastic coated electrical wire safely, economically, and easily.</p> 
---	---

DRM
Drill Powered Wire Stripper

608-873-1920
www.arpiusa.com

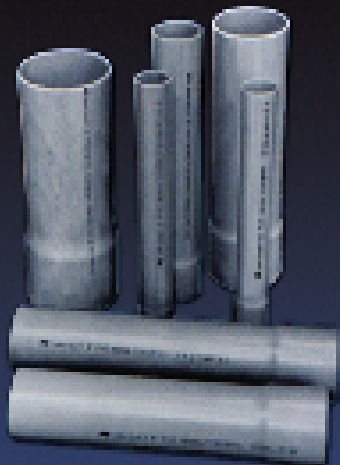


american
pipe &
plastics Inc.

PART OF **A**atkore
INTERNATIONAL



AMDUCT POWER, COMMUNICATIONS AND ELECTRICAL CONDUIT



- Manufactured to meet NEMA TC2, NEMA TC6/8, ASTM F512 and UL651.
- Sweeps, bends, and fittings are manufactured to meet NEMA TC3, NEMA TC9 and UL651.
- Our PVC Conduit has a smooth bore that reduces cable drag.
- Lightweight, flexible, easy to handle and resistant to impact.
- The solvent welded joints ensure water tight integrity excellent resistance to chemicals, rot, rust and electrolytic corrosion.

www.ampipe.com – (607) 775-4340

SorbWeb™ Plus Secondary Oil Containment



In 2015, a catastrophic oil spill occurred in Southern Alberta for a major electrical utility. A catastrophic oil failure occurs when a sudden or unexpected breakdown of the transformer's electrical system, oil storage system or other primary containment system malfunctions and oil is released into the surrounding area.

When a catastrophic oil spill occurs it typically creates a dangerous situation for any persons in the area and could quickly become an environmental hazard that results in thousands of dollars of fines to the company, followed by the remediation costs for the environment - all of this in addition to the loss of power in the area being served by the utility.

The SorbWeb Plus™ system is a passive oil containment system that will provide sufficient containment of spilled oil as a result of a sudden oil spill following a catastrophic failure of the transformer.

The system is optimized to reduce the economic costs involved in replacing the most important elements of the system. The extent of the remediation and associated cost is limited to the quantity of oil released and the response time of the remediation.

In the event that a significant spill occurs, prompt action must be taken to remediate the spill to prevent the migration of oil into other areas or layers of the system. The longer the oil remains in the containment the greater the risk that the entire Sorbweb Plus system will require replacement.

Remediation Review

This turnkey remediation project was divided into three main tasks: 1) Site visit to determine the extent of the spill

size throughout the SorbWeb™ Plus system layers 2) Remediation, removal and disposal the contaminated stone, sand layer and system layers 3) Construction, SorbWeb™ Plus system rehabilitation. Albarrie GeoComposites acted as the general contractor for the entire project.

After removing the contaminated material, a visual inspection found discoloration that was observed from the area that came into contact with the oil. The Vac-Truck was used to remove all the contaminated stone. Next, the impermeable liner within the contaminated area was inspected. The top contaminated sand layer was removed within the contamination area using the Vac-truck.

Next, the contaminated absorbent layer was removed within the contamination area. The existing non-woven geotextile showed signs of oil contamination and so it was also removed and discarded.

The surface of the contaminated Albasorb layer had noticeable gelling which indicated reaction with oil. The construction crew removed and disposed of any layers that came into contact with the oil until they were satisfied the oil had not migrated any further.

All the contaminated layers were removed until clean layers of the Oilmat and Albasorb could be seen. The contaminated oilmat was removed and disposed of by the construction crew. The sand beneath the congealed oilmat was observed to be clean and unaffected by the spill. The new oilmat was cut and placed, maintaining the required minimum overlap in between the existing and new oil mat layers.

The remaining layers were re-installed and stone was replaced in the affected area. Finally, the site was cleared of all debris and all equipment was removed from the substation.

REPAIR CONDUIT IN A SNAP!

- No Tape
- No Plastic Straps,
- No Metallic Straps

NO KIDDING!

Designed especially for
power, communications,
and fiber optics



"The World Leader In Split Conduit Products"



Conduit Repair Systems, Inc.

The World Leader In Split Conduit Products

800-670-1804

fax: 435-673-8724

email: crs@conduitrepair.com

www.conduitrepair.com



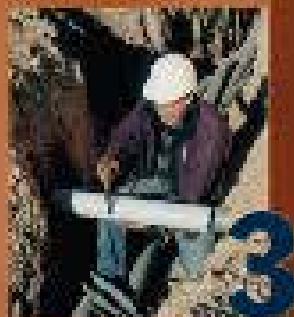
BOOTH #3662



Step 1: Remove
Damaged Conduit



Step 2: Cut Split
Duct Conduit to Fit



Step 3: Snap in
Place



Step 4: Attach
Adapters



Step 5: Finish Job
in Record Time

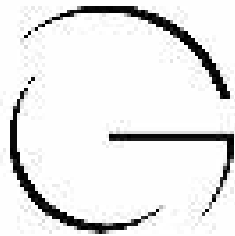


Conclusion

The Sorbweb Plus™ secondary oil containment system was an effective containment system for this substation transformer. Any oil that was spilled from the transformer after installation of the containment was confined within the containment. Any oil which reached the oilmat did not penetrate into the bottom sand layer, or underlying subgrade soils, offering the client optimized clean up and remediation costs.

It is recommended that Albarrie be notified within 24 hours of the discovery of a spill. A spill may be reported to 1-844-sorbweb(767-2932) which serves as Albarrie's emergency contact number. Within 24 hours of receiving notice of a spill, Albarrie staff will review remediation procedures with the client and provide guidance as required.

www.albarrie.com •



GOLIGHT

Revolutionary Lighting Solutions



Durable... Versatile... Powerful... GUARANTEED



When the job gets tough, our users need reliable illumination to show their way and march through elements to get their critical work done. More often than not, that means battling wind, rain, snow and ice and doing so in the dark. In those conditions, light that can be dramatically directed where it is needed, when it is needed is an essential tool for safety and productivity. In both emergency situations and day-to-day operations, Golight has proven to be a vital tool in extending work hours and increasing productivity. Golight has been a partner to the men and women who keep our lights on for almost 20 years and we are committed to seeing that relationship grow and develop.



KOOLERS... BANDANNAS... DECALS . Send an email to media@golight.com and let us know you saw our ad in "THE UTILITIES SOURCE" and we will send you some Linean branded merchandise.

Condux Tesmec: AFB506 Puller-Tensioner



The Condux Tesmec line of pullers, tensioners and puller-tensioners offers industry leading features and superior performance, providing utilities and utility contractors the ability to take on the most challenging stringing projects. The Condux Tesmec line is the most advanced equipment in the industry, replacing 20 to 35 year old equipment designs. Condux Tesmec continues to lead the way with product innovation.

The AFB506 puller-tensioner is designed for stringing one or two ropes or bundled conductors. The unit offers 2 x 10,100 lbf (2 x 45 kN) or 1 x 20,200 lbf (1 x 90 kN) of pulling

force and features two pairs of bull-wheels with completely independent controls. The bull-wheel grooves on the AFB506 are made from wear-proof nylon sectors. Wear-proof thermally and chemically treated steel bull-wheel grooves are also available.

Bullwheels speed up or slow down automatically with no operator intervention required. This is especially critical when installing conductor around corners. A hydraulically actuated locking clamp clamps the conductor to the bull-wheel allowing faster reel change operations and enhanced safety.

Go Green and Dramatically Reduce Fuel Cost!

The patented ICOM JTG II Liquid Propane System
is innovative and offers these advantages:

- Nationwide Installation & Service
- Equal power, torque and drivability of gasoline
- Cold climate reliability
- Reduces greenhouse gas emissions by up to 20%
- Dramatically reduced emissions
- Virtually no particulates
- Fuel range extended with the use of bi-fuel
- Extended service intervals



ICOM's Propane Optimization
Program' (POP) eliminates driver
input to maximize propane usage

ICOM NORTH
AMERICA
Alternative Fuel Systems

**Weather Resistant
Solid Brass Padlocks**
Made to your specifications in the U.S.A.

HERCULOCK
Hercules Industries, (USA)

HERCULES INDUSTRIES, INC.
Manufacturer of HERCULOCK Padlocks
P.O. Box 197 • Prospect, Ohio 43342
Toll Free: 1-800-345-2590
Fax: (740) 494-2274
www.HERCULOCK.com

Optimize Fleet Productivity

CFA

CFA Software
FLEET MAINTENANCE & INVENTORY
CONTROL SOFTWARE SOLUTIONS
SINCE 1969

CFAWin

- ✓ Evaluate & Improve Fuel Economy
- ✓ Automate PM Tracking
- ✓ Increase Warranty Recovery
- ✓ Analyze Life-Cycle Costs & Trends

Why CFA Software?

- ◆ Over 40 Years Experience
- ◆ Superior Product Support
- ◆ Low TCO
- ◆ Free Implementation Assistance

Shop Floor

- ✓ Technician-Friendly Interface
- ✓ Allows RO Entry In Shop Environment
- ✓ Repair Time Clock Feature
- ✓ View Equipment Repair History

e-Service Request

- ✓ Submit & View Service Requests Online
- ✓ Provide Audit Trail of Submitted Requests
- ✓ Reduce & Automate Data Entry

Call for a FREE Demo!

CFA Software
800.437.6001 • www.CFASoftware.com

The AFB506 comes equipped with two negative brakes that maintain line tension in the event the pull is stopped or power/hydraulic pressure is lost. The negative brakes are self-acting and require no operator action to initiate.

Hydraulic Control Extensions

Like all Condux Tesmec pullers, tensioners and puller-tensioners, the AFB506 has the ability to interface and work together through the use of hydraulic control extensions. Multiple units can be linked together and controlled from a centralized location.

The AFB506 is also able connect to and operate other hydraulic components such as Condux Tesmec reel stands and winders. One person can operate the puller-tensioner, plus a reel stand from the control panel. The AFB506 is able to independently control up to two reel winders, but some Condux Tesmec units can control as many as four.

Using independent pullers, tensioners, and puller-tensioners allows for the installation of multiple phases simultaneously; up to 3-phases and a ground is possible at the same time. Hydraulically controlled systems allow Condux Tesmec equipment to eliminate conductor galloping, providing utility contractors maximum pulling control.

Controls & Hydraulic Dynamometer

The controls for the AFB506 as well as all Condux Tesmec pullers, tensioners and puller-tensioners, are clearly marked and allow the user to safely monitor operations. The hydraulic dynamometer takes the guesswork out of tensioning and pulling operations, allowing the user to set tension parameters or pull limits quickly, easily and accurately. No more manually converting hydraulic pressure to tension or pull load.

With the tension or pull limit point set, the machine shuts down if the set level is reached. In addition, indicator lights let users check fluid levels, as well as pressure and temperature readings. The control panel has a lockable and watertight cover. And the engine compartment comes standard with noise reducing materials that improve operator safety and protection.

www.conduxtesmec.com



MODULAR WORK TRUCK INTERIORS & SERVICE BODY DRAWERS

Commercial grade aluminum drawer units, cabinets, workbenches, lockers, chests, bins and shelving for walk-in vans as well as drawer systems for service bodies and pickup trucks



MAXIMUM EFFICIENCY
ENHANCED ORGANIZATION
INCREASED SAFETY

EZ STAK 550 Albion Ave. Schaumburg, IL 60193
630.994.3300 www.EZSTAK.com





Meet Utilities' New Fully Rugged Android™ Champion



Xplore's 10.1" XSLATE D10 Rugged Tablet PC Proves Android™ Can Mean (Tough) Business

Today's utility contractors are not strangers to rugged mobility. They often spend entire shifts working on their feet, in their vehicle or otherwise on the move away from a traditional office setting. Field service professionals across all utility sub-sectors particularly appreciate and embrace the constant connectivity and fast computing capabilities of today's tough tablet PCs.

Xplore Technologies' rugged tablets are well-known for powering through up to 20-hour workdays at peak performance rates – rain, dust or shine – thanks to hot-swappable battery options, chemically hardened sunlight-readable glass screens, IP-65 weather-resistant physical strength and long-lasting, Intel-driven data processing.

The new XSLATE D10 Fully Rugged Tablet, introduced by Xplore in early November, is no exception. However, the XSLATE D10 has gone above and beyond the competition to set a new standard in rugged mobility and I/O connectivity, the Android way.

Although built with the same appealing features as Xplore's other fully ruggedized mobile PCs, the XSLATE D10 harnesses the superior security and flexibility of Android 5.1, Lollipop to sweeten the deal for mobile workers who need a tough mobile computer capable of completing all tasks associated with real work in real-time, even when challenged by more extreme climate conditions.

Until now, there was no Android mobile PC as big, as strong and as secure as the 10.1", C1Z2/ATEX-compliant XSLATE D10 tablet. With a rare combination of 4GB RAM and 64GB SSD, this lightweight Android champion packs twice as much punch as any other Android device currently on the market in the storage and energy-saving categories. And there is no other Android mobile PC – of any size, rugged or not – that gives utility professionals a full set of I/O ports.

After more than of a decade supporting telecommunications, CATV, and power service providers, Xplore understands that connectivity – to 4G LTE, Wi-Fi and Bluetooth networks, as well as to test and inspection tools – is critical to utility professionals' ability to deliver results fast. But quality can't be compromised for speed, and the ability to achieve both starts with workers' ability to do more – by connecting to more people and data – from a single tablet. That's why the XSLATE D10 includes up to eight I/O ports as a standard feature – including two USB 3.0, RJ-45, an optional HDMI input – and offers a multiple-user login option that centralizes HQ

in workers' hands.

But the XSLATE D10 isn't meant to exclusively satisfy the rugged work requirements of a single field service category. It was designed with the needs of all utility workers in mind, including those charged with network construction, service installation, infrastructure maintenance and repair and even supply transportation via truck or railroad.

This supremely rugged computing platform also boasts a unique, future-proof skill set that will empower utilities and contractors to expand their mobile workflow lineup as needed. Currently, the XSLATE D10 supports everything from GIS mapping, infrastructure inspections and service call dispatch to real-time on-site and remote diagnostics, on-site completion of maintenance checklists, user manual access, inventory management, and work order closeouts. And the D10 is more than proficient in multiple data capture methods to expedite completion of these activities.

Though many workers are accustomed to keyboard data entry, mobile work environments aren't always amenable to typing. While the XSLATE D10 does offer a Companion Keyboard option, Android's easy-to-use Touch capabilities mean capturing important data – or signatures – is as easy as picking up a digital pen and writing on the upsized 10.1" screen.

For those searching for a mobile computer that not only reduces data loss, but lost productivity, the Android-powered XSLATE D10 might be just the right solution they've been seeking for their most rugged work assignments. It's truly a first-of-its-kind tablet PC that delivers the perfect mix of Android security, Touch-enabled collaboration, workflow flexibility and far-reaching mobility to make any job – whether done in rain, sun, snow or dirt – a whole lot easier no matter where your "office" may be that day.





SALES • RENTALS

PARTS • SERVICE

Shawmut Equipment Company

Utility Equipment Rentals, Sales, Parts and Service

Why Shawmut Equipment?

Reliable Equipment

Shawmut Equipment only carries the finest brands available. We have developed strong relationships with the manufacturers we represent, allowing us to satisfy all of your equipment needs.

Knowledgeable Technicians

Our service department is staffed with technicians who undergo constant training to learn about the latest innovations in technology in order to support, service and maintain your equipment quickly and correctly. We provide our technicians with a fleet of service trucks equipped to make fast, on-site repairs 24 hours a day. Our facilities are equipped with state-of-the-art diagnostic tools.

Parts Availability

Our Parts Department at Shawmut Equipment is one of the best in the nation, and Shawmut's team of Parts Sales Representatives have the talent, knowledge, and experience to get equipment users the right parts quickly.



Introducing the New National NBT45-TU Tracked Crane



Available in November 2015

Shawmut is excited to announce the new National NBT45-TU, a 45 ton capacity hydraulic crane, mounted on a Prinoth Go-Tract 4500 rubber tracked carrier. The new National NBT45-TU is designed to combine the strong capacity chart and high reach of the National NBT45 with the low ground-bearing pressure of the Prinoth GT4500.

The National NBT45-TU is equipped with a 142 ft five section full power main boom and 55 ft extension, for a maximum tip height of 203 ft. The Prinoth carrier is outfitted using the developed sprocket-track system allowing for superior stability.



www.shawmutequipment.com



Shawmut Equipment

Serving the Equipment Industry Since 1957

(508) 238 - 1900

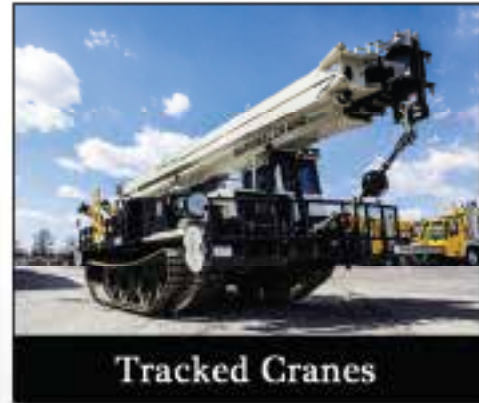
SALES ● RENTALS ● PARTS ● SERVICE



Tracked Buckets



Tracked Digger Derricks



Tracked Cranes



Tele-Boom Crawler Cranes



Boom Trucks



Industrial Cranes



Rough Terrain Cranes



Rubber Track Carriers

Shawmut Offers:

- Superior Customer Service
- Three Full Service Facilities
- Factory Trained Technicians
- 24 - Hour On Site Service
- Latest Diagnostic Equipment
- Extensive Parts Inventory

CONNECTICUT

20 Tolland Turnpike
Manchester, CT 06042
Toll Free: (800) 829-4161
Office: (860) 643-4161

MASSACHUSETTS

136 Eastman Street
South Easton, MA 02375
Toll Free: (877) 526-9213
Office: (508) 238-1900

NEW BRUNSWICK

327 King William Road
Saint John, NB E2M 7C9
Toll Free: (888) 594-8444
Office: (506) 635-1550

www.shawmutequipment.com

Surge Suppression Incorporated, A Strong Foundation and a Bright Future.



From time-to-time in one's life, a moment of greatness takes flight. From its simple beginnings as an independent sales office, Surge Suppression Incorporated (SSI), starting out as ITD of Destin, began its journey. SSI's founder Travis Sanders caught a vision from a friend and worked the dream to what has now become a world renowned manufacturer of high quality surge protective devices also known as surge protectors. Travis quickly attracted experienced sales, business and engineering talent that helped the business grow. Building a business to the point of being noticed in its marketplace is difficult at best, and many have tried and failed. Yet, SSI caught the attention of several suitors and, after many months of discussion with Travis' heirs and select team members, SSI was acquired in September by ILSCO® - a well-known electrical connector manufacturer. The future looks very bright for SSI, in its new relationship with ILSCO.

SSI-built its unique marketplace position with three critical patents that focused on core manufacturing and product safety technology that would grow the company from just a few to 48 employees. A small business, yes, but with great positive impact to those that use SSI's products. SSI's premier surge protector known as the Advantage® product line has saved numerous businesses and utilities thousands of dollars and has helped keep these same businesses productive. This cost savings shows up in lower operational costs through solving production downtime issues to the lower capital expenditures and repair costs from production equipment lasting longer. The Advantage® surge protective devices excel at performance and come in customizable packages.

A hallmark of SSI's success has been its ability to create customized surge protector solutions to accommodate the most difficult retrofit installations one could imagine. Often, an effective surge protector installation can be achieved using standard or slightly modified products. On the other hand, in dealing with an already existing (retrofit) installation, one may not find the space to capture an effective surge protector installation. From creating a 13-foot high by 3-foot wide cabinet to house 190+ surge protectors to simply moving the surge protector's conduit fitting to a different location on its enclosure, SSI delivers outstanding quality and a UL Listed product all in a customized

package – oh and did they tell you they can do most of these customized packages in less than a week!

One may ask, who needs customized surge protective devices, aren't they all the same? Many surge protectors use the same core protection technology inside; however, how that technology is assembled into a finished product is far from being the same. In addition, installation is a key to implementing a successful surge protector system. Often, surge protectors are not optimally installed rendering them ineffective at best or at worst, non-functional. Many times these ineffective installs could have been successful just by "adjusting" some of the parameters (like moving the conduit fitting) of the surge protector package. SSI's chief engineer, Ron Hotchkiss, has adapted the patented technologies into building blocks that allow for fast manufacturing of numerous surge protection package configurations.

For the past few years, SSI has been under the direction of Rich Hotchkiss, President. Rich has brought clever manufacturing methods gained from his experience as a VP of manufacturing operations. He has taken his brother Ron's designs and streamlined the production methods creating ultimate manufacturing flexibility and speed. The Hotchkiss brothers were able to take patented technology, market needs, product performance, and cost effective manufacturing methods to create the products used by customers around the globe. Nevertheless, the Hotchkiss brothers will not take all the credit, as they are more than aware that it is the team at SSI that truly make it successful.

The team at SSI continues to grow and expand, and now under the care of ILSCO, SSI is poised for explosive growth in the surge protector marketplace. Built on the foundation of noteworthy customers such as the US Military, major electrical and water utilities and Fortune 500 companies to the small business fighting to control operational costs, SSI has the right surge protector product for your application. From the adverse effects of lightning strikes to the constant barrage of internally generated electrical transient voltages, SSI has the right surge protection product for any need. Thirty-three years and counting, SSI sets the industry standard for quality, performance and customer satisfaction and is devoted to continually raising that bar.

About the author:

Frank R. Basciano, CM – Director, Product Management; Surge Suppression Incorporated (SSI). With more than 25 years of direct industry experience, Frank is a Certified Manager (CM) from the Institute of Certified Professional Managers at James Madison University in Virginia. Frank received his electrical engineering education from DeVry University and a master's degree in Management in Leadership and Organizational Effectiveness from the University of South Florida, Tampa.

Frank is currently an Institute of Electrical and Electronic Engineers (IEEE) member actively participating in several working groups within the Power and Energy Society (PES) (Section 3.6) dedicated to creating industry standards regarding surge protective devices for both power and information communication technologies (ICT). You can view Frank's profile at: <https://www.linkedin.com/in/frb19>

www.ssiq.com •

Could Quality Surge Protection be the Missing Piece of your ROI?



Protection Matters™



SURGE SUPPRESSION INCORPORATED

NEW LOOK!

SAME EXCEPTIONAL PRODUCTS AND SERVICE.

1-888-987-8877

SSIPQ.COM



Elliott Equipment Company's New E-Line Aerial Work Platforms for the 21st Century Lineman

New Telescopic ANSI A92.2 aerial work platforms eliminate trial lift and test pick, improving safety and efficiency.

In order to build the right tool for the job, Elliott Equipment Company explored issues and concerns within the utility industry concerning lifting personnel. Among powerline contractors and utility professionals using telescopic cranes with work platforms, top concerns included OSHA compliance, safety, productivity, efficiency, and transportation. By focusing on improving within these areas, Elliott Equipment Company's new E-Line telescopic aerial work platforms are changing the way powerline contractors and utilities perform transmission construction and maintenance.

Elliott Equipment Company's new E-Line series of telescopic aerial work platforms, distributed exclusively by Utility One Source, marks the introduction of a range of exclusively ANSI A92.2 compliant telescopic aerial work platforms. These aerial work platforms boast working heights up to 215 feet and not only eliminate OSHA's requirement for trial lift and test lifts, thus increasing efficiency without sacrificing safety or compliance with federal regulations, but also provide linemen and operators with a suite of new tools specifically designed to make the job easier, safer, and more productive

New at ICUEE 2015, Elliott Equipment Company unveiled the E145 (145 foot) and E190 (190 foot) models. The Elliott E190 E-Line is now the tallest truck-mounted telescopic aerial device manufactured in North America with 190 feet of powered working height and over 200 feet with an optional electrical isolating jib. According to Jim Glazer, Elliott Equipment Company's President, "The E190 is an extremely significant product for us. It establishes an industry leading working height, and also adds new features to the E-Line series including an electrical isolating jib and an isolating platform yoke. The E190 further establishes Elliott as a leader in innovation and safety. We listened closely to leaders in the industry when developing this machine."

The Elliott E-Line series is comprised of three core models: the E145, the E160 and the E190. All models feature a telescopic boom with a detachable 1,200 lb capacity gravity-leveling work platform. The work platform features a hydraulic yoke and kickstand for easy boom attachment and an optional isolating yoke as well as OSHA-compliant dual hand rails and integrated stainless steel grounding lugs. All models are controlled via a rotating seated or standup control

Helping You Find Your Car Since 1955.

BRACKETS



MASTARMS



CUSTOM



POLES



UTILITYMETALS.COM
1-800-MASTARM (627-8276)

Utility Metals is a leading manufacturer of outdoor lighting brackets, mastarms and poles. We offer an extensive line of products for all of your outdoor lighting applications.




LINE WARD
CORPORATION



Built to efficiently bury or pull underground cables, pipe or fiber optics.

INFO@LINEWARD.COM | 800-816-9621 | WWW.LINEWARD.COM

**WHAT IF ONE SIMPLE TOOL
COULD HELP REDUCE
LINEMEN INJURIES?**



1. LOWER INCIDENCE OF ARC FLASH AND ARC FAULT EVENTS
2. CUT ACCIDENTAL CONTACTS
3. PREVENT RUBBER GLOVE PUNCTURES
4. REDUCE LINE WORKER BURNS AND SUFFERING
5. PREVENT LOST TIME AND EXPENSE DUE TO INJURY, COLLATERAL DAMAGE, ACCIDENT INVESTIGATIONS, WORKMAN'S COMP AND CUSTOMER OUTAGES
6. SUSTAIN AND IMPROVE SAFETY PERFORMANCE NUMBERS

TWISTOOL™

TWISTOOL will do these things and more.
Phone 641-425-2655 and ask for a free trial
Check us out at: www.twistool.com

station at the lower controls, and wireless remote controls with a hard-wired connection in the work platform.

ANSI A92.2 and the Elliott E-Line Series

Every Elliott E-Line model is tested and designed according to the ANSI A92.2 standard that requires a 2:1 structural load rating, a level ground 1.5:1 stability rating, and a 5 degree slope 1.33:1 stability rating. ASME B30.5 boom truck cranes are tested to a less stringent standard, including a level ground 1.18:1 stability rating and a 1.6:1 structural rating, without a 5 degree slope test. Under OSHA's regulation 1926.1400 for Cranes & Derricks in Construction, when operating an ASME B30.5 telescopic crane with detachable work platform, crews must perform a trial lift and proof test that involves simulating each aerial lift with weights to verify stability and equipment integrity before lifting personnel. The only exception to this rule, according to OSHA, applies to "machinery originally designed as vehicle-mounted aerial devices (for lifting personnel)", like Elliott's E-Line aerial work platforms.

ANSI A92.2 compliance is particularly important because of the time and cost involved with performing the OSHA mandated proof test and trial lifts when using an ASME B30.5 crane to lift personnel. It's a critical topic now as some manufacturers are offering 'dual rated' cranes that they claim allows the crane to operate without performing the OSHA mandated proof test and trial lift. Such a practice is inconsistent with OSHA's exceptions that only apply to equipment originally designed as an aerial device. Furthermore, both the ASME B30.5 and ANSI A92.2 standards specifically exclude products from the other standard.

Tools to Make a Lineman's Job Easier and More Efficient

Elliott's E-Line series includes a wide range of features that improve productivity and safety. These features include material handling capabilities up to 15 tons on the E160 and E190, and 7 tons on the E145. The main winch operates the same as a crane, but the load chart is rated to the ANSI A92.2 standard including stability and structural testing. The main



winch, which is absent on most aerial work platforms, allows crews to use one truck for two jobs.

All lifting and aerial functions are monitored by a work envelope monitor that senses lift cylinder pressures, boom length, and boom angle with a hydraulic lockout safety feature. The computer also features a work area definition system designed to allow the operator to set jobsite parameters around obstacles or hazards.

The E-Line series also features special 'EZ-Crib' dual stage vertical outriggers that significantly reduce cribbing and improve setup in off-road conditions. The 30 inch longer vertical stroke on these outriggers make it easier to level the truck and aerial device without having to unload and load large amounts of cribbing on the job site, reducing work injuries and setup time.

Additional features include controls with an LMI / work envelope display and hard wire connection on the E145/ E160/E190 models, a hydraulic tool circuit with a compact intensifier in the work platform that eliminates the need for a portable hydraulic pack, and an isolating yoke/jib connection to reduce the chances of electrical shock.

The E145, E160 and E190 are available exclusively from Utility One Source. Elliott intends to continue develop the best solutions for lifting loads and positioning people, with a key focus on safety and efficiency.

For more than 65 years, Elliott Equipment Company has stood for industry-leading products and some of the most innovative design features. Elliott manufactures over 50 models of truck mounted cranes and aerial work platforms with dozens of custom features and options. Headquartered in Omaha, Nebraska, Elliott's state-of-the-art facilities continue to manufacture equipment that is built to last.

www.elliottequip.com •



ClearSpan Fabric Structures
1.866.643.1010 ClearSpan.com/ADNCP

**WE MANUFACTURE • WE INSTALL
WE SAVE YOU MONEY**

VERSATILE SOLUTIONS FOR ALL YOUR CONSTRUCTION NEEDS

MADE IN USA

Fabric Structures
Natural Light & Low Cost Per Sq Ft

Hybrid Buildings
Benefits of Metal & Fabric Buildings

Foundation Solutions
Build Anywhere & Quick Construction

GET 0% FINANCING FOR 84 MONTHS OR GET A BIG CASH DISCOUNT

SERVICE VEHICLE INTERIOR UPFITTING

Getting the right layout for your mobile workspace.

By Bruce Hardy, Marketing Manager at EZ STAK

Whether you are an independent service contractor or manage a fleet of service trucks, getting the right configuration of interior accessories for your vehicles is very important. There are multiple considerations: organized storage of parts and tools, electrical power, generators, air compressors, workbenches, cranes etc. Workflow at the jobsite plays an important part of how you chose to set up your work truck. An efficient and organized layout will positively impact your bottom line and provide a safer work environment for the operators.

A workbench surface can be very useful if assembly or repairs need to be performed at the site. Vises, grinders and other equipment can easily be attached to the work surface. Material choices are either metal or hardwood.

Several companies offer small cranes that make it easier and safer to load and unload heavy parts or machinery in and out of the vehicle.



Lockers are important for work clothes as well as protective gear storage and can be ordered with optional vent holes to allow wet garments to dry out.

Electrical power can be an important accessory as well. Outlets or cord reels can be placed at the rear of the truck and at the workbench area to enable power tool operation. Additional light fixtures can also be added.



Cabinet lockers with adjustable interior shelving are great for securing expensive tools or parts.

Storage accessories for Walk-In Vans and Van Bodies include drawer units that offer multiple dividers for smaller parts or tools, shelving with dividers that allow larger parts storage, bins that can be removed to take the parts to the job, overhead cabinets for storage above an optional workbench and outside underbody drawers that provide easy access to additional heavy parts or equipment.





ISOLATED PROTECTION TO PREVENT GROUND LOOPS



The Lind Isolated Power Adapter provides a regulated, isolated DC output to power laptops, thin clients, monitors and other devices from a DC voltage source. Output and input DC returns are isolated, allowing the prevention of possible electrical noise caused by ground loops.

Lind's Isolated Power Adapter is built to work with most existing laptop brands and models. These adapters can also be designed for custom applications. Contact Lind to discuss solutions for your exact mobile power needs.

The Isolated Power Adapter's electronics are enclosed by an epoxy-sealed case to protect the internal circuitry from damage caused by shock and/or vibration. Its durable construction withstands extensive wear and tear in any harsh mobile environment. Snap-in connectors make replacing missing or damaged cables from anywhere in the field easy and hassle-free.



POWER SPECIALISTS FOR
MOBILE COMPUTING

Storage accessories for Service Bodies include drawer units that fit each individual compartment size. They are available in multiple heights, widths and depths and come with mounting hardware to secure them in the compartment. Dividers organize parts and tools. Drawers designed for one handed opening allow the operator to carry more when returning tools, parts or equipment to the truck.



An important consideration for all upfit accessories is the overall rigidity and strength of each modular unit.

Will it provide years of dependable service in the field? Manufacturers either use heavy gauge aluminum which allows more payload or steel which is substantially heavier.



Other factors are the type of hardware used such as hinges and latches. Piano hinges on long doors are best.

Also, what is the load capacity of the drawer slides and shelves? Heavy duty, full extension ball bearing drawer slides (200 to 500 lb. capacity) will give better service over the long run.

Pickup trucks are an important part of the service industry too. Secure storage with the ability to retrieve tools and parts easily adds value. Full width drawers or over the wheelwell drawer units have become popular upfits.



Many manufacturers offer multiple pre-designed kit assembly packages that make the decision making process easier for specific vocational uses and most offer their customers help with the design layout process.

Their experience is extremely valuable and the questions they ask can lead to a much better work truck solution.

www.EZSTAK.com •



DEFY EXPECTATIONS

Be A Job Site Super Hero!

New from VMAC:
The *Ultimate* "Utility Belt"...

The RAPTAIR Multifunction

Includes:

- ▶ **Compressed Air**
- ▶ **AC Generator**
- ▶ **Welder**
- ▶ **Battery Charger**
- ▶ **Booster**
- ▶ **Hydraulic Capability**
- ▶ **Auto Shutdown**

**All in one
Compact Powerful
package!**



VMACAir

Visit our **YouTube**
Channel

user/vmacair

VMAC

VEHICLE MOUNTED AIR COMPRESSORS

COMPACT. POWERFUL.

vmacair.com/ncp

1-866-369-3729

NESCO Rentals® Presents the Right Track System

The weather was unseasonably warm in late March as BBC Company worked to remove wooden utility poles and install modern replacements in the hills and valleys of Southern Indiana.

Though the sunshine was welcome, the change in temperatures affected the logistics of moving linemen and equipment to the jobsites in rainy and muddy conditions; in this case, 30 miles of near swamp-like surroundings. Utility companies often face unique and challenging circumstances; and track units are in high demand for wet and slippery areas and this jobsite was no different.

NESCO Rentals® arrived to implement the Right Track System – a new patented design system that provides on-site convenient conversion of standard tire-based vehicle to a tread-tracked vehicle.

The Right Track System is a heavy duty tracked tread system that works with larger utility vehicles. The tread tracks are loaded onto the vehicle, then mounted to the tires of the vehicle after it arrives at the site. This provides the truck with traction and stability comparable to a tracked vehicle while driving through difficult terrain.

The tread tracks can be easily removed prior to leaving the jobsite so the vehicle can be driven over road surfaces again. The Right Tracks System enables the efficient adaptation of wheeled units, providing a suitable alternative to track machines.

“With a track machine, we’d have to load it up and haul

it, but we can take the tracks off and drive it down the road if need be,” said Justin Pontius, our customer’s general foreman. “After getting to use it, it was very helpful.”

In addition to the mud and knee-deep water at the Indiana jobsite, the conditions included steep, slick hills with sharp grades and uneven surfaces along a nearby creek bed. The Right Track System, applied to a Terex Commander Digger Derrick, served BBC Company without issue, earning praise from the linemen at work.

With increased PSI, easy installation and unlimited usage, the Right Track System is available now through NESCO Rentals®. The Right Track System can be put to work throughout the country for transmission and distribution companies, oil and gas, rail, telecommunications and construction.

NESCO Rentals® is proud to be the exclusive master rental distributor for the integrated rubber Right Track System. The NESCO Right Track System is the perfect combination of a truck and track mounted vehicle providing optimum performance of equipment saving both time and money.

Offering a variety of rent-ready Right Track System vehicles, including the Terex TM100, Terex Commander 6060, Terex General and Terex Commander 6060 Digger Derricks. The system is easily installed and removed, allowing for total equipment and jobsite versatility.

www.nescorentals.com/right-track •



Doing our part for a better future.



The T.A. Pelsue Company is serious about our place in the community. Whether it be our local community in Englewood, Colorado or our larger responsibility to the planet and it's inhabitants, our business practices are geared towards making the smallest imprint possible.

Quality First

One of the simplest ways that we contribute to the sustainability of the planet is to make the highest quality product possible. In that effort, we've manufactured tents that are still in the field 20 years later. While that can frustrate our sales staff, it consistently gives us a sense of pride that our tents don't fill landfills. They are used, day in, day out, until one day — it may be after 10 years — a seam rips. And then we fix it and it goes back out into the field. The same goes for many of our patented products, which conform to applicable regulations and standards of OSHA / ANSI / CEESI / CGA / UL / FM, among others, and are certified where applicable.

Manufacturing

Pelsue has taken steps to be more environmentally friendly in both production and final product: Made in the USA means less fuel used in shipping parts

- All scrap metal from production is recycled
- All scrap wood from production is recycled
- Our factory floor is cooled using low-energy evaporative coolers
- All mobile applications are available with clean alternative fuel run gensets
- All FiberLite bodies and frames are 100% recyclable
- All wheel chocks are made from 100% recycled tire rubber
- Optional recycled rubber anti-fatigue mats are available

www.pelsue.com •

THE WORK TRUCK SHOW

2016

We **know** your **challenges**.
We **know** your **business**.

GreenTruck
SUMMIT
For Advanced Green Commercial Vehicles

March 1-4, 2016

Educational sessions
begin March 1

Indianapolis, IN

worktruckshow.com



GET YOUR ANSWERS

- Maximizing return on equipment dollars
- Strategies to enhance fleet productivity
- Controlling fuel and operating costs
- Current market and equipment trends

Brought to you by

NTEA
THE NATIONAL TRUCK EQUIPMENT AND TIRE ASSOCIATION





Lifting Since 1965

With over 50 years of innovation, exceptional quality and hard work, VERSALIFT has become the world leader in aerial lifts. Throughout the years, our distinct LEGACY OF SUCCESS has been marked by talented employees, notable clients and innovators. Today, VERSALIFT continues to adapt to changing markets, in an ever-changing world, with a clear commitment to quality through unequaled innovative design and manufacturing.

Time Manufacturing

At Time Manufacturing, building the safest, most efficient and hardest working machines to get the job done has been the core value of the company since it was established in 1965. The first VERSALIFT, measuring 24 feet tall, was built in a very small factory in the country town of Clifton, Texas. Fast forward to present day, Time Manufacturing proudly manufactures its VERSALIFT product in a state-of-the-art, 300,000 square foot facility. Through vertical integration, Time has the ability to monitor and maintain the quality of all products from the initial purchase of steel all the way through final testing.

Today, Time Manufacturing's complete line of VERSALIFT aerial devices includes articulated over-center and articulated non-over center aerial lifts, telescopic and telescopic/articulating aerial devices. VERSALIFT also offers a complete line of Digger Derrick products with sheave heights ranging from 42, 45, 47 and 50 foot. Whether it be a 29' man lift or a 108' material handler, there is a VERSALIFT to get the job done!

Where Quality Meets Power

The VERSALIFT product line is the clear leader in providing the most productive, innovative, safest and cost-effective units to the end-user, coupled with providing industry-leading customer service. In doing so, we concentrate on the following target markets:

- Power Generation
- Power Transmission
- Power Distribution
- Rural Electric Co-Ops
- Investor-Owned Utilities
- Municipalities
- Telecommunications
- Tree Care
- Government Agencies
- De-Icing Equipment
- Contractor Equipment
- Construction Equipment

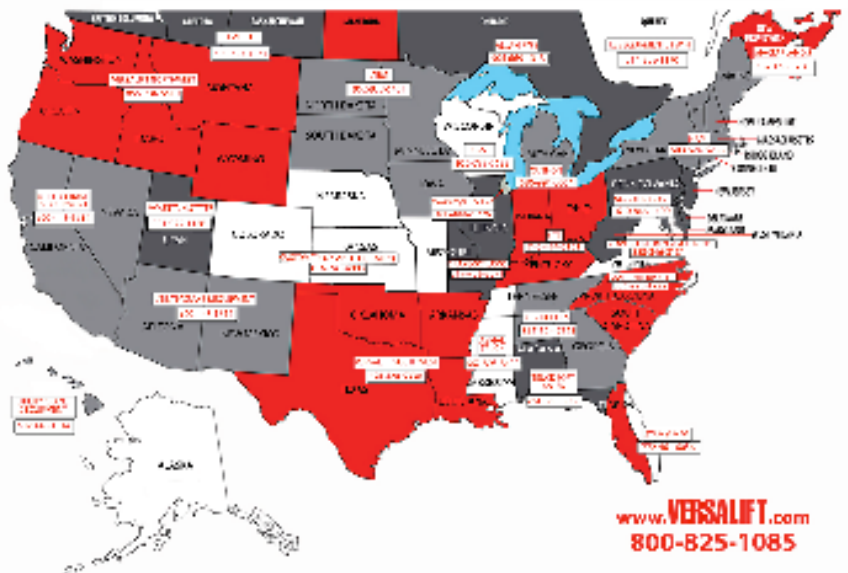


Distribution at its Finest

VERSALIFT distributors deliver the world-class products and services that set us apart. They know us, and more importantly, they know you. Our distributors know better than anyone how to put the global power of VERSALIFT to work for you, in your industry, in your region and for your business.

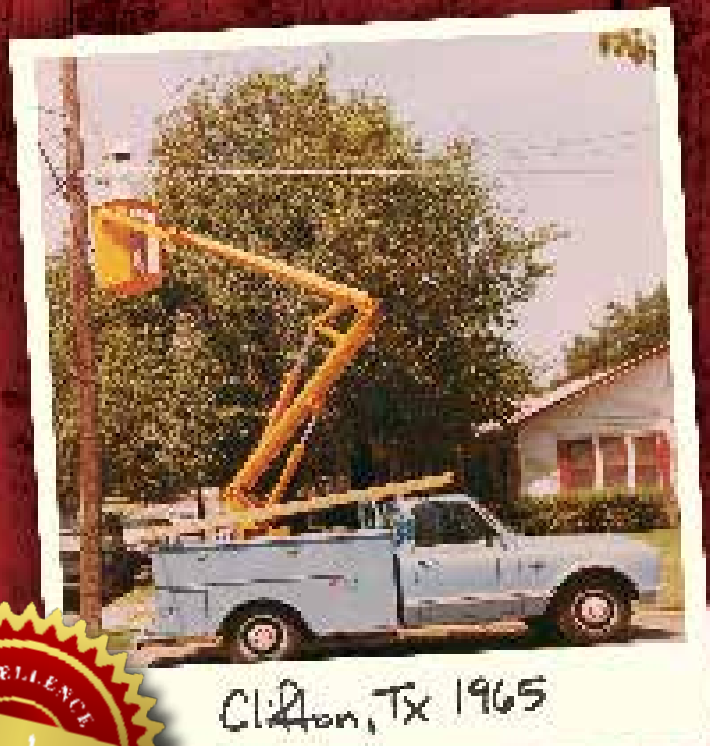


U.S. & CANADIAN DISTRIBUTOR NETWORK



www.VERSALIFT.com
800-825-1085

LEGACY *OF* SUCCESS



1965



2015

The Aluma 7816 Tandem Axle, Flatbed Utility Trailer



Aluma's 7816 tandem axle, flatbed bed utility trailer is ideal for a wide range of hauling applications. The 7816 features removable aluminum fenders, an extruded aluminum floor, two 5-ft aluminum pull out ramps with storage underneath and front and side retaining rails. The bed is 77.5 inches wide by 192 inches long. The trailer also includes an LED lighting package and safety chains.

Durable aluminum trailers from Aluma are lightweight, corrosion resistant and maintenance free. Special features on many makes and models offer users versatility and convenience. Aluma trailers also come with an industry leading 5-year all-inclusive warranty.

www.alumaklm.com

The DECKHAND by LaValley Industries

The DECKHAND® product line by LaValley Industries of Bemidji, Minnesota, brings a new level of flexibility and load control to material handling attachments. The DECKHAND's head unit is powered by an excavator's hydraulics and uses a variety of arm attachments to safely and efficiently load or unload all kinds of pipe, utility poles, road mats, and other materials.



The DECKHAND's modular design makes it easy to change out arms to accommodate different pole or pipe diameters, coatings, and wall thicknesses. Long-lasting, proprietary padding on the arms allows users to work confidently with coated pipe as well as a variety of other materials.

The DECKHAND was originally designed and engineered to provide safer, more precise pipe-handling in the oil and gas pipeline industry, but it has also received ready acceptance in the utility construction field for handling water, sewer and gas pipe, as well as utility poles.

www.lavalleyindustries.com

Iowa Mold Tooling Co. Releases the Dominator® III Mechanics Body

Iowa Mold Tooling Co., Inc. (IMT), is pleased to announce the release of a new Dominator® III mechanics body. The new body design accommodates the IMT model 12000 telescopic crane without a front stabilizer for customers that do not require 100 percent lift capacity in all load zones.

"Since its release, the IMT Dominator III mechanics truck has been serving a unique niche customer with mid-range lifting needs," said Jim Hasty, IMT general manager. "Our new body design is the result of listening to our customers' needs, and demonstrates our unyielding commitment to providing reliable and durable products that help them get their work done."

The new Dominator III body will be available in both 11- and 14-foot lengths, replacing the existing 13-foot version. With two side pack configurations for each body length — a right front raised with the left side all raised and an all raised version — customers have four configuration options to choose from.



www.imt.com

Eaton Introduces its B-Line Series Conduit Clamp

Power management company Eaton recently introduced its new B-Line series conduit clamp, featuring a one-piece assembly for effortless installation on strut profiles and most B-Line series cable tray rungs. Available in multiple finishes for commercial environments, the clamp and its protective saddle help to secure and protect conduit, flexible conduit and cables to cable tray rungs and strut profiles.

"Known for its one-hand installation, Eaton's B-Line series new conduit clamp can be easily installed and removed without disrupting neighboring clamps on cable tray or traditional strut," said Kyle Spencer, product line manager, Eaton's B-Line Division.

With fewer parts required and minimal stock-keeping units (SKU), the new clamp's adjustable height allows the clamp to work on equal trade sizes for both electrical metallic tubing (EMT) and rigid conduit, helping eliminate confusion and frustration for customers during the ordering process.

www.cooperblineline.com/cc-clamp

Voted by Contractors As The Best Pulling Tools 2014



Made in the USA

Crank Lift and Bearing Spin
Real Jacks RJ6K

iTOOLCO

Huge Time Savings

PULLSLICK



Fastest When Pulled With the Cannon 10K

Cannon 10K Dual Capstan 4 Speed 10K Tugger "Easy, Strong, & Fast"



Demo Today



9 to 40 Fpm
Made in the USA

iToolco.com
865-670-3713

Company	Pg.	Website
Albarrie Geo Composites	7	www.albarrie.com
Amerex	40	www.amerex-fire.com
American Pipe & Plastics	9	www.ampipe.com
ARPI	8	www.arpiusa.com
CFA Software	16	www.cfsoftware.com
Clearspan	27	www.clearspan.com
Conduit Repair Systems	11	www.conduitrepair.com
Condux	2	www.condux.com
EZ Stak	17	www.ezstak.com
Golight	13	www.golight.com
Herculock	16	www.herculock.com
Hogg & Davis	3	www.hoggdavis.com
iToolco	39	www.itoolco.com
Krenz Vent	6	www.krenzvent.com
Lind Electronics	29	www.lindelectronics.com
Line Ward	26	www.lineward.com
Nesco	BC	www.nesco rentals.com
NTEA	35	www.worktruckshow.com
Pelsue	IBC	www.pelsue.com
Precision Sales & Service	15	www.alternatefuel.com
Rayco	1	www.rayco.com
Ring Power Corporation	5	www.ringpower.com
Shawmut	21	www.shawmutedequipment.com
Surge Suppression	23	www.surgesuppression.com
Time Versalift	37	www.versalift.com
Twistool	26	www.twistool.com
Utility Metals	25	www.utilitymetals.com
VMAC	31	www.vmacair.com/ncp
Venco Venturo	IFC	www.venturo.com



Amerex Corporation
 P.O. Box 81 • Trussville, AL 35173
 Ph: (205) 666-3271 • Fax: 800-854-5980
 email: sales@amerex-fire.com
 www.amerex-fire.com

"Quality is Behind the Diamond"



ISO 9001 & 14001
 OHSAS 18001
 CERTIFIED

EXTINGUISHERS AND FIRE SYSTEMS

INDUSTRIAL • RESTAURANT • MINING • UTILITY • FACILITY
 WASTE MANAGEMENT • FORESTRY • AGRICULTURE
 SERVER ROOM • TELECOMMUNICATION • AIRCRAFT
 AIRPORT • CONSTRUCTION • OFF-SHORE PLATFORM
 REFINERY • TRANSIT BUS • MANUFACTURING
 VESSEL • MILITARY VEHICLE...MORE!



Designed and Assembled in the USA!



PELSUE®

TRADITION • INNOVATION

Vehicle Upfitting and Custom Trailers



Truck Chassis



Cargo Vans



High-Roof Vans



Fiberlite XL Trailer



Fiberlite POD Trailer

NESCO

SUPERIOR

CUSTOMER
SERVICE

RESPONSIVENESS AND SUPPORT SECOND TO NONE

NESCO Rentals® isn't just a premier provider of utility rental equipment, but a leader in responsiveness and support for all customers. Dedicated rental and service teams, combined with one of the industry's largest rental fleets, ensure NESCO meets your job site needs. Call us now to experience our superior customer service.



Visit our website, build a quote, outfit your vehicles and get to work.

(800) 252-0043 | www.nesco rentals.com

