

THE

UTILITYSOURCE

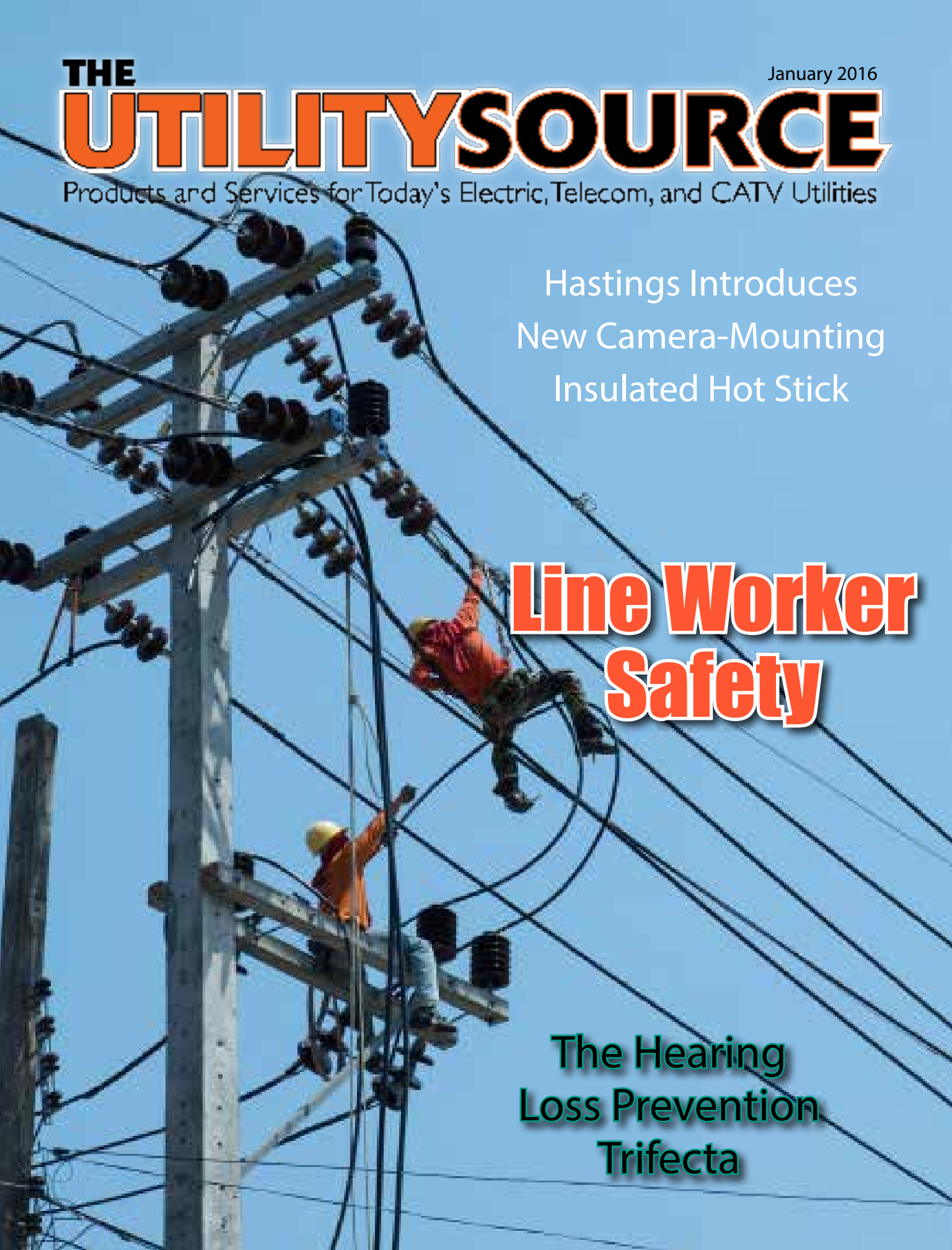
January 2016

Products and Services for Today's Electric, Telecom, and CATV Utilities

Hastings Introduces
New Camera-Mounting
Insulated Hot Stick

Line Worker Safety

The Hearing
Loss Prevention
Trifecta



*Could Quality
Surge Protection be the
Missing Piece of your ROI?*



Protection Matters™



SURGE SUPPRESSION INCORPORATED

NEW LOOK!

SAME EXCEPTIONAL PRODUCTS AND SERVICE.

1-888-987-8877

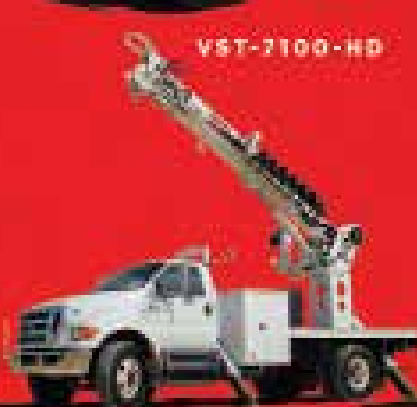
SSIPQ.COM



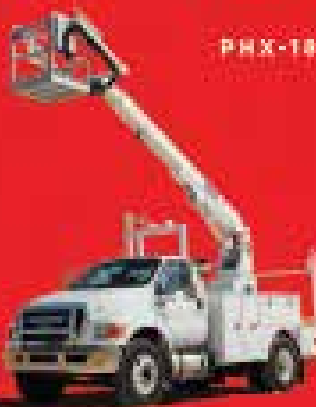
VST-2100-HD

PHX-180-1

SKYBIRD-T2151



TMD DIGGER DERRICK



VTP-40-NE
CABLE PLACER



VANTEL-29-NE



TEL-29-NE

DEMAND BETTER. DEMAND VERSALIFT.



As the world's leading aerial lift manufacturer, **Time Manufacturing** has made aerial work safer and more efficient for its customers since 1955. Our **VERSALIFT** product line has grown to now include over 50 model choices - whether it be a 24' lift or one reaching up to 210 feet, there is a VERSALIFT to get the job done.

For more information

contact
254-399-2100
www.VERSALIFT.com

PG 4	Industry News
PG 12	Company Profile: Elk River
PG 14	New Product Spotlight: Hastings Introduces New Camera- Mounting Insulated Hot Stick
PG 18	The Hearing Loss Prevention Trifecta: Fit, Comfort and Communication While Wearing
PG 22	Line Worker Safety
PG 26	New Product News
PG 32	Ad Index

GROUP PUBLISHER	Dave Gomez 205-358-7913 dave@handfmedia.net
ASSOCIATE GROUP PUBLISHER	Rick Harless 205-624-3794 rick@handfmedia.net
EDITOR	Annie McGilvray annie@handfmedia.net
CREATIVE/WEB DIRECTOR	Jacklyn Greenhill jacklyn@handfmedia.net
ADMINISTRATIVE DIRECTOR	Steven Hobson steven@handfmedia.net

CEO
Christy Hobson

PRESIDENT
Glen Hobson



Executive and Advertising Offices

PO Box 1568

Pelham, AL 35124

phone: 205-441-5591 fax: 205-624-3354

www.theutilitysource.net

glen@handfmedia.net

The Utility Source™ is published twelve times a year on a monthly basis by H&F Media Group, Inc. The Utility Source™ is distributed free to qualified subscribers. Non-qualified subscription rates are \$57.00 per year in the U.S. and Canada and \$84.00 per year for foreign subscribers (surface mail). U.S. Postage paid at Birmingham, Alabama and additional mailing offices.

The Utility Source™ is distributed to Power, Telcom and CATV Utilities and Utility Contractors throughout the USA. Publisher is not liable for all content (including editorial and illustrations provided by advertisers) of advertisements published and does not accept responsibility for any claims made against the publisher. It is the advertiser's or agency's responsibility to obtain appropriate releases on any item or individuals pictured in an advertisement. Reproduction of this magazine in whole or in part is prohibited without prior written permission from the publisher.

POSTMASTER: Send address changes to
H&F Media Group, Inc., P.O. Box 1568
Pelham, AL 35124
PRINTED IN THE USA

Get Cool!



Extend transformer life!

Increase transformer capacity up to 166%!

- expert technical assistance
- low sound levels
- energy-efficient motors
- large inventory
- one-piece cast aluminum blades
- galvanized or stainless steel guards



quality engineered, performance tested

Rugged Dependability

STANDARD IN EVERY MACHINE WE BUILD!

Hogg & Davis has been proudly manufacturing utility line equipment for more than half a century.



Our trusted products are part of the fleets and tool cribs of nearly every investor-owned power and communications company in the United States and beyond.



HOGG & DAVIS, Inc.

HOGG & DAVIS, Inc.

3800 EAGLE LOOP • ORILL, OR 97044

TEL 541.854.1001 • FAX 541.854.1080

WWW.HOGGDAVIS.COM

WE HAVE THE ROPE TO GET THE JOB DONE.



800-358-767

www.bucrope.com

TUS INDUSTRY NEWS

John Garrison, Jr. Named Chief Executive Officer & President of Terex Corp

Terex Corporation today named John L. Garrison, Jr. Chief Executive Officer and President effective November 2, 2015. He will also become a member of the Terex Board of Directors effective November 2, 2015. Mr. Garrison will succeed outgoing CEO Ronald M. DeFeo, who will continue to serve as Executive Chairman of the Company through December 31, 2015. Mr. DeFeo will continue as a consultant for Terex after December 31, 2015 through December 31, 2016.



Mr. Garrison joins Terex from Textron, Inc. where he served as President and CEO of their Bell Helicopter Segment. Prior to that, Mr. Garrison was President of Textron's Industrial Segment and E-Z-GO. He was also President and CEO at Azurix Corporation and held senior leadership positions at Case Corporation, and served as an officer in the United States Army.

www.terex.com

Kevin Smith Appointed President of HammerHead® Trenchless Equipment

Charles Machine Works, has appointed Kevin Smith as HammerHead® Trenchless Equipment president. Rick Johnson, CEO of Charles Machine Works and interim HammerHead president during the candidate selection process, has endorsed Smith as the ideal choice for the Charles Machine Works company which offers trenchless repair and rehabilitation solutions, as well as pneumatic tools for a variety of applications.



Smith had been serving as president of MTI® Equipment, itself a Charles Machine Works company – as is Ditch Witch®, where Smith had worked through the years as director of product definition and research, product planning manager, business manager and salesman.

Johnson said, “Kevin’s incisive vision comes directly from his solid industry background working with leading manufacturers within the Charles Machine Works family of companies. This means he knows every aspect of the business from multiple angles. He not only sees where HammerHead Trenchless Equipment can go but how to get there.”

www.hammerheadtrenchless.com

WINCHES INC.

YOUR WINCH SOLUTION

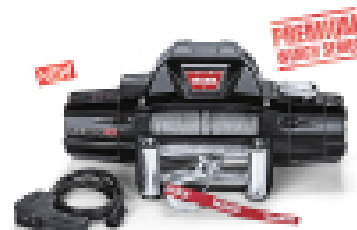


Winches Inc. carries a large inventory of Braden Winch, Tulsa Winch, WARN Winch, Superwinch, Ramsey Winch and other winch products and parts.

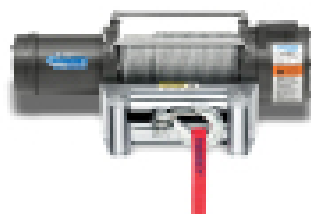


Whether you are looking for replacement units, application support, winch accessories or service parts, Winches Inc. is your one-stop shop.

Call our office or visit us on the web, today!



ALL MAKES - ALL MODELS



WARN, RAMSEY, SUPERWINCH

- 12 VDC, 24 VDC, 110 AC
- 1,000 TO 18,000 LB LINE PULL
- HOISTING OR PULLING WINCHES

WHAT YOU NEED WHEN YOU NEED IT



SERVICE PARTS

WINCH APPLICATION SUPPORT

TURN KEY INSTALLATION PACKAGES

RADIO REMOTE CONTROLS



877-495-9721

www.winchesinc.com

Takeuchi-US Appoints Ron Snyder National Service & Warranty Manager

Takeuchi-US, a global innovation leader in compact equipment, has announced that the company has appointed Ron Snyder as the National Service and Warranty Manager. He will be responsible for the entire service department, including four Regional Sales Managers, one National Service Training Manager, and one Customer Service Support Manager.

“Ron brings with him a great background in service and engine training from years of experience at Deutz,” said Mike Ross, Director of Operations at Takeuchi-US.

www.takeuchi-us.com

Mack Trucks Renews ATA Sponsorship for 2016



Mack Trucks announced it would renew its sponsorship of the American Trucking Associations (ATA) Share the Road highway safety program for 2016, continuing a 14-year tradition of supporting the public outreach initiative. The announcement was made at the ATA Management Conference & Exhibition in Philadelphia, Pennsylvania.

“Our customers depend on us to deliver tough, reliable, efficient trucks that keep drivers safe, but Mack’s commitment to safety doesn’t stop there,” said Stephen Roy, president of Mack Trucks North America.

“We’re proud to continue our Share the Road sponsorship because the program reaches millions of people across the country with critical messages about highway safety.”

Professional truck drivers selected to be part of Share the Road conduct safety demonstrations for students, policy makers, the media and other groups showing how to drive safely alongside heavy trucks. All of the drivers have exemplary safety records, and many have logged a million or more miles without an accident. They travel the country in a Mack Pinnacle™ 70-inch high-rise sleeper model to teach motorists about truck stopping distances, potential blind spots and other safety considerations that can help ensure safe travel for everyone.

www.macktrucks.com



MODULAR WORK TRUCK INTERIORS & SERVICE BODY DRAWERS

Aluminum storage equipment for Walk-in vans, service bodies, pickup trucks and SUV’s that enhances organization and increases efficiency on the job.



MAXIMUM EFFICIENCY ENHANCED ORGANIZATION

EZ STAK 550 Albion Ave. Schaumburg, IL 60193
630.994.3300 www.EZSTAK.com

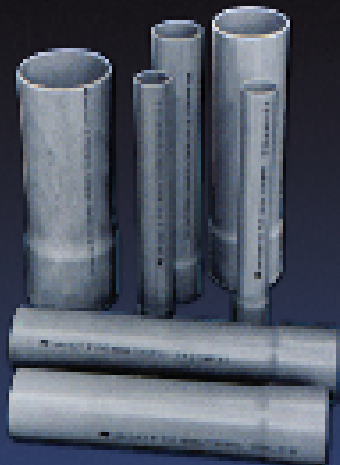


american
pipe &
plastics Inc.

PART OF **A**atkore
INTERNATIONAL



AMDUCT POWER, COMMUNICATIONS AND ELECTRICAL CONDUIT



- Manufactured to meet NEMA TC2, NEMA TC6/8, ASTM F512 and UL651.
- Sweeps, bends, and fittings are manufactured to meet NEMA TC3, NEMA TC9 and UL651.
- Our PVC Conduit has a smooth bore that reduces cable drag.
- Lightweight, flexible, easy to handle and resistant to impact.
- The solvent welded joints ensure water tight integrity excellent resistance to chemicals, rot, rust and electrolytic corrosion.

www.ampipe.com – (607) 775-4340



Knowledge is Your Competitive Edge

This line of comprehensive and digital training materials are suitable for novices as well as seasoned professionals. These industry-leading materials cover such topics as basic principles, industry standards, the latest industrial processes and technologies.

These training materials are available for use in both classroom and training environments.

Visit us at www.atp.com
 2016 March Show
 Booth #N25047

atp TECHNICAL PUBLICATIONS
 www.atp.com

The Work Truck Show 2016 in Indianapolis

There are plenty of processes a fleet manager can measure, but properly leveraging the resulting data to improve productivity is not always easy. That’s why several new sessions at The Work Truck Show® 2016 will demonstrate how to best utilize fleet performance and maintenance metrics.

The Work Truck Show, North America’s largest work truck event, is produced annually by NTEA – The Association for the Work Truck Industry. The 2016 Show will be held March 1–4 at the Indiana Convention Center in Indianapolis, Indiana. Educational sessions and the Green Truck Summit begin March 1, and exhibits open March 2.

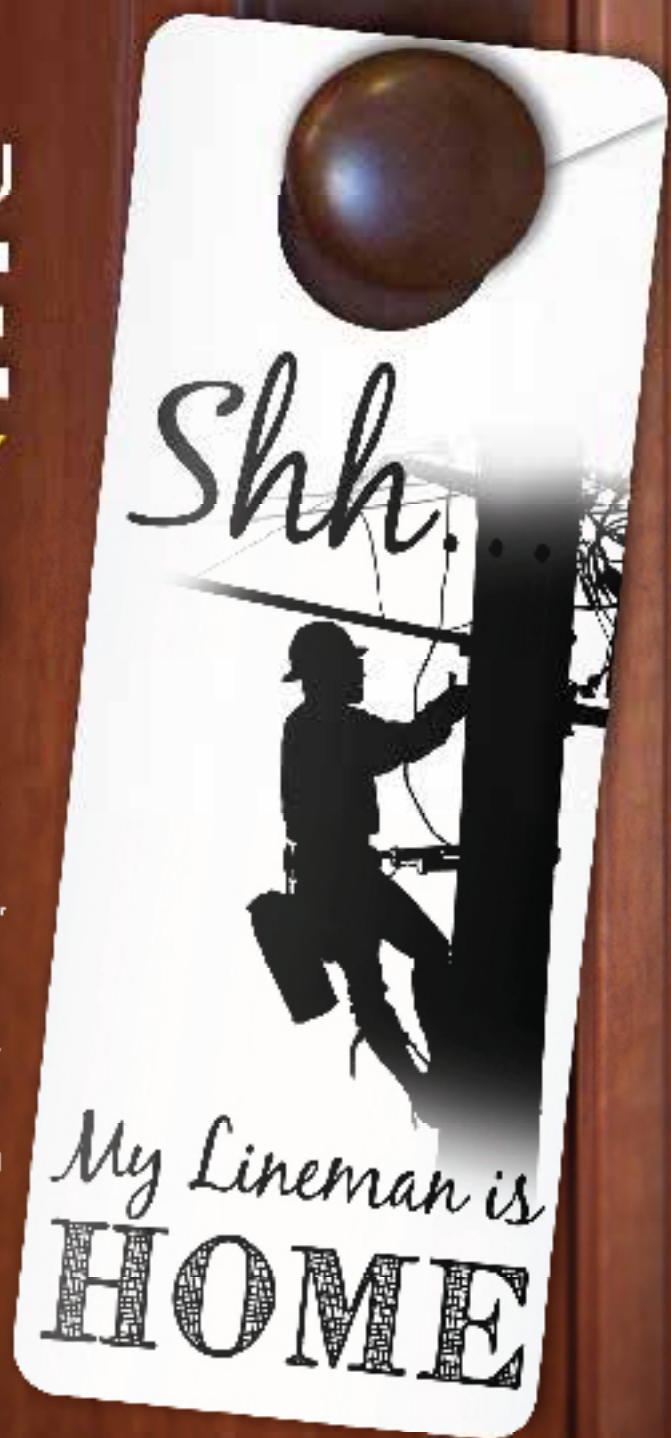
“The right data can help fleet operators enhance productivity, control costs, maximize investments and stay ahead of the competition,” says Steve Carey, NTEA executive director. “But for the best results, you have to know what data is critical and how to leverage it for each fleet’s specific needs. At The Work Truck Show 2016, attendees can find answers to these types of questions and learn effective strategies for improving fleet operations.”

www.worktruckshow.com

GETTING YOU
HOME
SAFELY
SINCE 1959

When it comes to safe, dependable hot line tools and equipment – we deliver.

For more than 50 years, our reputation for quality, dependability, and long-lasting products has made Hastings an industry leader in hot line tools and equipment. We're proud to say that our products have been field tested in all 50 states as well as countries around the world. When you see Hastings, expect the best – because hot line tools are our only business.



HASTINGS
A WORLDWIDE SUPPLIER OF
Hot Line Tools & Equipment

See our online catalog at:
hfgp.com • 269.945.9541



Introducing Our Best Lineman Pac EVER!

Hoffman Boots is proud to introduce our new Felt Lineman Pacs with all natural, crack-resistant rubber for years of service.

Boot Features

- Protective Toe or Plain Toe Option
- Reinforced Heel Counter and Toe Cap
- Crack Resistant Natural Rubber
- 10", 12", or 14" Heights
- Hoffman's Dual Steel Shank System
- 9mm Wool/Felt Liner
- Optional ASTM F2413-11 EH Rating

www.HoffmanBoots.com
 Call 1-800-925-1599 or (208) 786-4851
 Hoffman Boots, 100 East Riverside, Kellogg, ID 83837

Partnership Between West Georgia Technical College & Crance Industry Services, LLC Announced

West Georgia Technical College and Crane Industry Services, LLC (CIS) announce a partnership through the College's Economic Development Division to provide a new series of Skills Development Training Courses essential to construction, utilities, power generation, manufacturing, mining and refining.

Custom courses and open enrollment options are available at the new Centered on Safety Training Center™ on the WGTC Murphy Campus in Waco, Ga. The partnership between CIS, which provides crane and rigging training nationally and internationally, and WGTC is the result of an initiative to support workforce development needs.

Courses delivered by CIS instructors initially will include Basic and Advanced Rigging; Rigging Inspector; Crane Operator training, certification and qualification for Mobile, Overhead, and Tower Cranes; Crane Inspector; Crane Site Safety Management; and Power Line Safety for Utility Workers. Additional courses are in development.

www.craneindustrieservices.com •

Go Green and Dramatically Reduce Fuel Cost!

The patented ICOM JTG II Liquid Propane System
is innovative and offers these advantages:

- Nationwide Installation & Service
- Equal power, torque and drivability of gasoline
- Cold climate reliability
- Reduces greenhouse gas emissions by up to 20%
- Dramatically reduced emissions
- Virtually no particulates
- Fuel range extended with the use of bi-fuel
- Extended service intervals



ICOM's Propane Optimization
Program* (POP) eliminates driver
input to maximize propane usage

ICOM NORTH
AMERICA
Alternative Fuel Systems

Elk River

Personal Fall Protection

In 1988, Elk River started manufacturing fall protection products with twelve products and a handful of employees in Cullman, Alabama producing safe, quality products. Today, there are more than sixty hard working Elk River employees, manufacturing more than two thousand line items which are shipped to cities around the globe.

Elk River believes in traditional values: our people take pride in the quality work they produce. We advise each Elk River employee to execute each job responsibility as if their own loved one were going to put the product to the ultimate test.

Falls are the leading cause of injury and death in the work related accidents. Persons working at height must be protected against falls. When a fall hazard exist, fall protection equipment is necessary to protect the worker by incorporating a personal fall arrest system, or PFAS. Each PFAS consist of at least four components: Full Body Harness, Energy Absorbing Device, Anchorage Connector, and Anchor. Many companies do not have full time safety managers; therefore, the safety responsibility falls on people with other jobs or positions. Many of these people do not have the experience or knowledge of what it takes to protect their employees from falls and may buy inferior equipment or inappropriate equipment.

Elk River understands this and has created many safety kits to make their jobs easier. Elk River has kits available in

basic fall protection, roofer's kits, confined space kits, and aerial lift kits. All of the kits have everything you need to keep workers safe and keep the company compliant. Each kit is designed to have the right equipment; safety harness, anchorage, and connecting devices for each type of job.

Each company also must have a rescue plan in place for employees who work at height. A person who has fallen and is suspended by the fall arrest system has been saved from the fall, but must be rescued quickly. Being suspended causes major trauma within the human body within about 10 min-

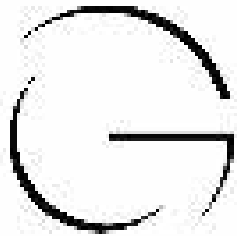
utes, therefore, calling 911 should not be the rescue plan of choice. Elk River has several rescue kits that can be deployed in the event of an emergency.

Elk River has a customer service department and sales reps that can help guide the individual to the right kit, or even help guide the safety manager to the correct products to meet the needs of special type projects.



www.elkriver.com





GOLIGHT

Revolutionary Lighting Solutions



Durable... Versatile... Powerful... GUARANTEED



When the job gets out of hand, we can rely on our ratings from it to show our clients and much in the elements to get our electrical service back online. More often than not, that means battling wind, rain, snow and ice and doing so in the dark. In those conditions, light that can be dramatically directed where it is needed, when it is needed is an essential tool for safety and productivity. In both emergency situations and day-to-day conditions, Golight has proven to be a vital tool in extending work hours and increasing productivity. Golight has been a partner to the men and women who keep our lights on for almost 20 years and we are committed to seeing that relationship grow and develop.



KOOLERS... BANDANNAS... DECALS... Send an email to media@golight.com and let us know you saw our ad in "THE UTILITIES SOURCE" and we will send you some Linean branded merchandise.



Hastings Introduces New Camera-Mounting Insulated Hot Stick

Imagine responding to a power outage caused by severe weather and downed trees. Debris litters the ground and branches hang precariously from power lines. Unsure of whether the line is still energized or not, utility workers must work quickly and cautiously to assess the situation and restore power.

In other situations, workers must examine utilities in confined and inaccessible spaces, working to diagnose problems and ensure safety and security without being face-to-face with the area in question.

For utility workers these are common scenarios. They are

also two of the many situations Hastings, a worldwide manufacturer of hot line tools and equipment, had in mind when it created the new Camera-Mounting Insulated Hot Stick.

Ed Bankston of Com-Ed in Chicago, Ill., reports utilizing the new hot stick specifically to inspect cracks in cutouts and examine inside of manholes before entering.

“The ability to mount a camera on a hot stick helps us to visualize spaces that are beyond our reach to assess first-hand quickly and easily,” Bankston said. “Using this hot stick saves time and struggle when inspecting areas while keeping me and my crews safe.”

The SorbWeb™ Plus

Solution

OIL REACTIVE FABRIC

A Better Solution

Engineered Secondary Oil Containment System allows water to pass through but seals on contact with oil.

- Robust engineered solution
- Our Oilmat has the highest polymer loading in the industry with a minimum 2500 g/m² or 73.7 oz/yd²
- Installations follow a rigorous quality control protocol to ensure the containment is properly installed
- Designed to allow for vehicle access up to a max of 26,000 Kg/group of axle



1.866.269.8275 x 0235 | www.albarrie.com



Modeled after the Hastings Tel-O-Pole series, this specially engineered hot stick allows for a GoPro™ Action Camera to be mounted and utilized for quick, easy, and safe inspection of and around energized lines, transformers, insulators, poles, buildings, bridges etc.

Utility workers can use the camera to wirelessly stream and record live picture and video to the ground with any iPhone, tablet, or android device compatible with the GoPro™ Application. The ability to transmit and record footage allows lineman to work more efficiently alone or in a team.

The hot stick could allow inspections to be completed without the use of a bucket truck or climbing gear saving time and reducing the risk of injury to lineman in the process.

The hot stick features a sturdy, yet easy-to-use camera mount attached to an insulated hot stick. Hastings' hot sticks are designed for long reach, speed, convenience, and safety. All sections are fabricated with reinforced electrical grade fiberglass for greater strength and high dielectric properties, tested at 100kv per foot. Accessories that can be purchased separately include a camera light, smart phone mount, and carrying case.

Additionally users can purchase just the clamp claw mount which can be clamped to any hot stick.

Hastings understands that everyday has the potential to bring the unexpected to lineman. That is why the company designs every product, including its all new camera-mounting hot stick, with safety in mind.

Based in Michigan, Hastings is a world-class manufacturer of fiberglass products and tools for the electrical power and communications industries. Since 1959, Hastings has pioneered design and fabrication of hot line tools to withstand today's toughest field conditions. With a passionate commitment to innovation, Hastings products make the job safer and easier.

For more information, call Hastings at (269) 945-9541.

www.hfgp.com

RAYCO

FORESTRY MOWER/MULCHER

PURPOSE BUILT FORESTRY MOWER/MULCHER 99 HP KUBOTA
TURBO DIESEL ENGINE SUPER FLOW, CLOSED LOOP HYDROSTATIC CUTTER HEAD DRIVE
RAYCO-EXCLUSIVE ELEVATED COOLING DESIGN 17.7-INCH RUBBER TRACKS
3-SPEED TRAVEL EASILY REMOVABLE DEBRIS SCREENS TO PROTECT COOLERS
HYDRAULIC REAR WINCH CAB WITH HEAT AND A/C RAYCO-EXCLUSIVE FORESTRY DOOR
WITH 1.25-INCH LEXAN ESCAPE HATCHES IN ROOFTOP AND REAR WINDOW PREDATOR
MULCHER HEAD WITH VARIABLE DISPLACEMENT HYDRAULIC MOTOR
SEE YOUR DEALER OR CALL 1-800-392.2686

CALL - 800.392.2686 VISIT - RAYCOMFB.COM

Transmission • Distribution • Tree • Sign & Signal • Boom Truck & More



Ring Power[®]

Utility Equipment



Rent the right tools for YOUR job

When installing infrastructure and maintaining facilities, we are dedicated to providing you with the highest quality equipment. Working with Ring Power Utility Equipment gives you access to a vast range of products, lengths and loads to match your fleet. Short-term, long-term or Rental-Purchase options available.



Mike Beauregard • 321.403.6776 • Mike.Beauregard@RingPower.com • www.RingPower.com

The Hearing Loss Prevention Trifecta:

Fit, Comfort and Communication While Wearing

By Del Williams

At least four million workers go to work each day in damaging noise, ten million people in the U.S. have a noise-related hearing loss, and twenty-two million workers are exposed to potentially damaging noise each year, according to the Centers for Disease Control and Prevention (CDC).

Occupational hearing loss is the most commonly recorded occupational illness in manufacturing accounting for 1 in 9 recordable illnesses, states the Bureau of Labor Statistics, as cited in a 2010 CDC National Institute for Occupational Safety and Health (NIOSH) document. Although a traumatic noise exposure may cause an immediate hearing loss in some cases, most occupational hearing losses occur so gradually that workers are unaware they are losing their hearing, adds the document. With continued exposure, the hearing loss spreads into those frequencies most needed to understand speech.

In many workplaces, disposable foam earplugs are traditionally used to block noise. However, their effectiveness depends not only on proper fit, and the matching of the protector to their particular ear but also on compliance – that is, whether workers wear them consistently and correctly place them in their ears.

“Most people wear disposable foam earplugs incorrectly, which limits their effectiveness,” says John Franks, PhD, a former NIOSH Hearing Loss Prevention Section Chief. “Each foam earplug is supposed to be rolled tightly, put deep in your ear canal, then held in place with your index finger until it fully expands and you can just see the outer edge. Instead, most people leave them hanging out of their ears.”

Another challenge occurs when workers must talk in person or via two-way radio in high-noise work environments. To hear and communicate, they remove their earplugs, which exposes them to damaging noise for the duration of the conversation. Such cumulative exposure to harmful workplace noise is a leading cause of hearing loss.

“People commonly remove earplugs to carry on a conversation,” says Franks. “But if they remove them 20% of the time, they have reduced their effectiveness by half.”

Essentially what is required to optimally protect workers is a hearing loss prevention trifecta: a device that delivers the proper fit, maximum comfort, and the ability to communicate verbally or over radios without having to remove it.

To tackle the severe occupational hearing loss problem, it is helpful to consider the ideal solution, which requires allowing for all three factors.

First, an ideal hearing protection device would be customized to meet the needs of every employee or worker on the floor. That means fitting all ears regardless of differences in size, shape, or depth. Like snowflakes, no two ears are the same – and they continue to grow throughout a person’s lifetime – so there is no such thing as one-size-fits-all when it comes to hearing protection. With better fit and comfort, workers would wear the devices more compliantly.

Second, the hearing loss prevention device would prevent high-noise sounds from entering the ear at levels that could cause instant damage or damage over time.

“NIOSH recommends reducing worker noise exposure to 85 dB for eight hours, but this can still leave 12-15% with hearing loss over their work lives,” says Franks.

Third, the device would prevent high-noise exposure with-



NEW FOR 2016



Venturo Van Crane

With the increased demand of work vans in the industry, Venco Venturo has developed a *small crane* application that will increase productivity at any job site. Designed for use within the rear cargo area, the new van crane from Venturo will retain the rugged designs that have set the standard of our cranes for generations.

To learn more, visit www.venturo.com.



TRUCK-MOUNTED CRANES, CRANE BODIES & HOISTS



VENCO VENTURO INDUSTRIES LLC

12110 BEST PLACE | CINCINNATI, OHIO 45241

800-226-2238 | info@venturo.com | www.venturo.com



out limiting communication, and could be worn all day. In this way, the worker could simply wear it the entire workday, which would eliminate the hearing damage that occurs when typical earplugs are removed in high-decibel work settings to communicate.

Fortunately, a new generation of occupational hearing protection has been designed with the trifecta of custom fit, comfort and ability to communicate while wearing.

Custom Fit

Unlike one-size-fits-most disposable earplugs, some cost-effective hearing protectors are fitted to the individual worker so every worker receives the same high level of hearing protection.

"If you make custom hearing protection available for everyone and ensure people know how to use it, studies have shown it can reduce occupational hearing loss to near zero in industry," says Franks.

Such custom hearing protection can be rendered quickly and cost-efficiently in an industrial setting.

For instance, Custom Protect Ear (www.protectear.com), the largest personalized industrial hearing protector manufacturer in North America, custom molds hearing protection, such as its dB Blockers product line, to each worker's ear. The company's representatives go to the plant to take impressions of each worker's ear canal and outer ear in a process that usually takes about ten minutes per worker.

The custom impression is sent to the lab for processing where the device, which is an exact replica of the wearer's ear canal and outer ear, is manufactured. This ensures the device seals the ear both in the canal and around the ear, preventing damaging noise from entering while eliminating ear pressure. The company is increasing such precision by scanning the ear impression and is moving into 3D printing of the casting for even closer fit. Company representatives then return to the plant to train workers on how to ensure proper fit and fix any that do not fit perfectly.

"A custom hearing protector fit is a key part of preventing occupational hearing loss because everyone's outer ear and ear canal is unique," says Franks. "The closer the fit, the better the function and the less people take them out to relieve ear pressure or modify them as is common with disposable foam earplugs."

Comfort and Compliance

Since Custom Protect Ear's hearing protection devices are made of a medical grade silicone, they are designed to be soft and flexible. The advantage of the softer devices is better comfort and function. They change shape slightly as the wearer's ear canal changes shape when talking or chewing, thereby continuing to seal during those activities.

"While various silicone-based hearing protectors exist, it is important to use one made of medical grade silicone," says Franks. "This can help ensure that it is sufficiently supple and can prevent someone from developing an allergy to it."

Greater comfort addresses a significant problem facing health and safety managers who oversee hearing loss prevention programs: getting people to wear hearing protection products and policing their use.



Improved comfort enhances workers' ability to comply with wearing hearing protection for extended periods, and so do certain design aspects. Since they are custom molded, they only fit the correct way like a key fits a lock so it is not necessary to check insertion. When improperly inserted, discomfort encourages workers to correct insertion. Checking for compliance is also simplified because the hearing protector's colored exterior makes it easy for safety officers to see at a glance if workers are wearing them.

Communication Without Removing Device

Since workers often need to communicate in person during their work shift, they typically remove disposable earplugs to talk. To prevent occupational hearing loss, it can be important to provide custom hearing protectors that can be worn the entire work shift without removal.

Including a filter and vent in custom ear protectors like Custom Protect Ear's can make speech more understandable by reducing attenuation at higher speech frequencies. This allows leaving them in while talking, and isn't possible with typical solid foam earplugs.

Talking by two-way radio is also common in workplace settings. But because a radio must be louder than background noise for a worker to hear it, it usually is the loudest sound source in the work setting, which must be protected against to avoid hearing loss.

To deal with this problem, Custom Protect Ear connects incoming radio audio to the outside of the hearing protector so the device's filter reduces dB volume and the worker does not have to remove the hearing protector during his or her shift. Because the proprietary filters "squeeze" high and low frequencies to block potentially harmful sound waves, communication comes through, but harmful noise does not.

For robust hearing protection both in person and via radio, the company offers a convertible hearing loss protector. This provides the convenience of a detachable cord and a filtered vent for interpersonal communication, and attaches easily to various radio cords for seamless integration with radios.

"If you're using a radio to communicate, it is better to run a tube from the radio receiver to the custom hearing protector so workers can lower radio volume and protect their hearing," says Franks.

Del Williams is a technical writer based in Torrance, California.

www.protectear.com

Voted by Contractors As The Best Pulling Tools 2014



Made in the USA

Crank Lift and Bearing Spin
Real Jacks RJ6K

iTOOLCO

Huge Time Savings

PULLSLICK

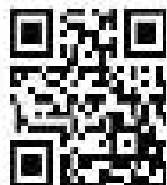


Fastest When Pulled With the Cannon 10K

Cannon 10K Dual Capstan 4 Speed 10K Tugger "Easy, Strong, & Fast"



Demo Today



9 to 40 Fpm
Made in the USA

iToolco.com
865-670-3713

Line Worker Safety

We have always know Line Workers are tough, and the Bureau of Labor Statistics agrees. In Preliminary data collected from 2014; The BLS has identified that “Electrical power-line installers and repairers” have the 9th highest “fatal work injury rate” of all Civilian occupations*. Of those Fatalities; almost 60% were caused by electrocution. Those of us that understand the industry are not surprised by this as we should have a better understanding that the product these people are tasked with delivering has the capability of ending a life in an instant.

Knowing the hazards line workers face is important in engineering solutions to the problems of exposure and the things that cause those fatalities. Design feature advances are helping to reduce hazards as is the education of workers on how to implement and work with these advances. The replacement of old equipment with newer, better designed, equipment continues to improve the safety of our Line workers.

Where the electrical hazard cannot be eliminated Personal Protective Equipment (PPE) is used. Some of these PPE items have been accepted as a standard for quite some time; Rubber Gloves and Leather Protectors, Blankets and Shielding, Insulating Sleeves. etc... Advances have been made in the materials being used, production methods, and design of this equipment to help make it as little of burden as possible. There is a wider, better quality selection of Insulated and Safety Tools is available now, than ever before.

Most of these items have specific retesting and recertification requirements that have been documented by OSHA. And for the most part, companies, groups, and organizations are in compliance with these requirements. An area that often does not get the attention it deserves is the physical inspection of these items that should be being done on a regular basis.

Insulating Rubber goods are some of the most common PPE items used by Line Workers. These are not new items to this industry and are without a doubt, one of the most important to be in proper working order. Rubber Gloves, Blankets and Sleeves must be electrically tested before they are first issued and at specific periods after that. The periodic electrical testing of these items is done to ensure the thickness of the rubber is still adequate to protect as it is designed too. As noted before, most have been doing this for quite some time.



The often overlooked physical inspection of rubber PPE is just as important as the Electrical Test. Damage to these items can be catastrophic therefore complete and thorough inspection could save a life. All Voltage Rated Rubber Insulated products should be physically inspected prior to each days use and after any incident that could potentially have caused damage. If any of these evidences of damage exist the item should be removed from service immediately.

Tears, Punctures, or Cuts

Ozone Cutting or Checking

Embedded Foreign Objects

Texture Changes (Swelling, Softening, Hardening, Stickiness, Inelasticity)

Contamination

In addition to the basic physical inspection of the rubbers integrity, Insulating rubber gloves are to be given an “Air Test” in accordance with ASTM F496. This “Air Test” identifies that each glove be inflated up to a specific size (Type 1: 1.5 times its normal size / Type 2: 1.25 times its normal size) and thoroughly inspected. The purpose of this inflation is to emphasize the damage that could easily be overlooked. While OSHA does not call for a device to help perform this test it will be necessary for a device to be used in order to test the glove completely from the tip of each finger to the rolled cuff. This device, often referred to as a “Glove Inflator” is a simple device the glove can be attached to that allows for complete inflation of the glove.

The leather Protectors worn over the top of Rubber gloves is another item that should be thoroughly inspected and replaced if and damage or contamination is found. These protectors are a multi-purpose device. Their primary purpose is to provide mechanical protection for the rubber glove. Protecting the glove from sharp objects and materials that could easily damage the rubber and expose the Line Worker to extreme hazard. Cuts in the leather, torn or “popped”

“Don’t Make a “Shovel Choice” When Selecting a Transport Vehicle”

You wouldn't choose a shovel to dig a trench, when a mini-excavator is available to do the job faster, easier, safer and with greater overall economy.

So why choose a roll-back instead of a Retriever?



Developed in the 1960's... and not much has changed since.



Loading construction equipment onto a transport truck is inherently hazardous, made even more so by the roll-back's steep load angle.

To make it really dangerous, add some rain or snow, maybe a little oil or any kind of machine malfunction. Relying on the parking brake to hold a heavy machine in place on a steep deck is another unnecessary risk.

Retriever eliminates those risks, while speeding the loading/unloading process.

Retriever was introduced in 2002... and it's been getting better every day.



The First New Idea in Equipment Transport in 50 Years

Retriever Is a Simpler, Easier-To-Use, Safer and More Economical Way to Get The Job Done.

Patented Curved and Hinged Deck

Low Deck Height/Shallow Loading Angle

Exclusives!
No Hydraulics!
No Idle™ System

Greater Payload Capacity

Fewer Moving Parts

E-Primed plus Powder Coat Finish

Aircraft Carrier Quality Slip-Resistant Deck



There Isn't a Competitor That Can Match Us

RETRIEVER by VERSATRAN^{INC.}

stitches, and wear holes are all examples of damage that would require their immediate replacement.

Proper care of these rubber products will help maintain their safe for use status as well as improve the life span of the product. By performing and complying with these basic steps Line Workers can help improve their safe situation.

Keep these items clean, dry, and cool. Dirty, wet, and hot is a combination that will expedite the natural degradation.

Avoid harsh solvents when washing your hands. Some cleaners have ingredients that can damage natural and synthetic rubber. Washing with a mild soap after the harsh solvent will help remove those deteriorating material.

Avoid contact with petroleum products, exposure to ozone producing equipment, and store out of direct sunlight.

The selection and availability of quality insulated tools has never been greater. While there are limitations to the application of a Voltage Rated hand tools by Line Workers, there are still applications.

ASTM F1505 gives manufacturer guidelines for rating insulated hand tools for use up to 1,000 Volts AC. Not question today's Line Workers are seeing levels significantly beyond that, they are also seeing voltages within that level.

In order for a hand tool to be Identified as an ASTM F1505 Voltage Rated tool there are a number of qualifications it must meet. In addition to the voltage protection there are

requirements for coverage and durability of the insulation. Making sure that the features included in that tool are still capable of protecting the way they are designed; is the responsibility of the Employer and the User. Inspection of an Insulated Tool should be done before EACH USE of that tool. Inspections should be done of the mechanical function of the tool as well as any insulating material of the tool. If any damage is found that would prevent the tool from functioning safely, it should be removed from service immediately.

There are limits to the protection capabilities of every Insulating material and it's important for the user to understand the limitations. The limitations of the insulation should be plainly marked on every tool where possible. If there is no warning on your hand tool, it may be necessary to investigate the user's manual. If you are having difficulty locating these required warnings, you may want to ask what they are hiding.

In Closing; Line Work is a dangerous job. Devises, Training and PPE help provide the safest environment possible for this dangerous job. There are responsibilities all over the place. Don't get complacent. Do use quality equipment, inspect it regularly, and pay attention to detail. Look out for yourself and each other.

*U.S. Bureau of Labor Statistics, Current Population Survey, Census of Fatal Occupational Injuries, 2015.

www.cementexusa.com

Elk River
Personal Fall Protection

P.O. Box 1770
Cullman, AL 35056-1770

800.633.3954

www.elkriver.com

MADE IN USA

Helping You Find Your Car Since 1955.

BRACKETS



MASTARMS



CUSTOM



POLES



UTILITYMETALS.COM
1-800-MASTARM (627-8276)

Utility Metals is a leading manufacturer of outdoor lighting brackets, mastarms and poles. We offer an extensive line of products for all of your outdoor lighting applications.



Hino Trucks Announces Custom Color Paint Options

Hino Trucks is pleased to announce custom color paint options for all conventional trucks beginning with 2017MY. Hino will now offer a wide variety of exterior truck colors that customers can order as a factory option or color match to their customized request.

“Inside the Hino cab and under the hood, Hino offers the most comprehensive package of standard features in the market. At Hino, we strive to achieve a higher level of customer satisfaction and these customizable paint options have yet again raised that bar. The availability of varying paint colors now provides customers with a convenient way to make their truck uniquely their own or create a visually harmonized truck fleet,” said Glenn Ellis, Vice President of Marketing, Dealer Operations and Product Planning for Hino Trucks.

www.hino.com •

Workrite Uniform Company- New Flame Resistant Workwear

Workrite Uniform Company is proud to present a line of multi-hazard protection (MHP) flame-resistant (FR) workwear: Nomex® MHP by Workrite® FR.

The Nomex MHP fabric protects workers against multiple thermal hazards, including arc flash, heat and flame, and small molten metal splatter, while maintaining comfort and durability.

Designed to absorb moisture and dry faster, Nomex MHP keeps workers comfortable on the job. The inherent fabric properties in this line make for longer-lasting workwear with less shrinkage, good color fastness and excellent appearance retention after multiple launderings. The Nomex MHP line includes a work shirt, two pants and a overall.

The result is a line that offers greater protection, comfort and long-term value.

www.workrite.com/mhp •



McLaughlin To Introduce Next Gen Vacuum Excavator

McLaughlin will introduce this fall the next generation of its most popular vacuum excavator with an update that includes a no-hassle hose design that will help save crews time and energy.

The VX50 Gen 3 vacuum excavator features a hose that can hang on the side of the machine as potholing crews move from hole to hole. Current designs on the market require a hose to either be coiled into place or disconnected and put away.

“Hose handling is the top non-value-added activity of a potholing crew,” said Jeff Wage, McLaughlin vice president. “With the VX50 Gen 3, an operator simply hangs the hose on the side of the machine, moves to the next pothole location and pulls the hose off when he’s ready to work again. It makes crews much more productive by reducing the time and energy spent handling the hose.”

The VX50 Gen 3 vacuum excavator is ideal for potholing jobs by utility contractors. It features spoil tank capacities of 500 and 800 gallons (1,892.7 and 3,028.3 L).

www.mclaughlinunderground.com •

The New Opti-Brite TLL30FB

Optronics International, a leading manufacturer and supplier of heavy-duty LED vehicle lighting, broadened its line of miniature LED work lamps with the introduction of its new Opti-Brite TLL30FB today. At just 3.25 inches in diameter, the round lens of the new lamps is up to 35 percent smaller than comparable work lamps and, inch for inch, more powerful.

The TLL30FB’s four LEDs produce a raw lumen output of 960, and its flood beam has an effective lumen yield of 670. The compact lamp is so small that it can be easily mounted on any vehicle with 4.5 inches of clearance and comes with a durable stainless steel mounting bracket. The lamp is designed to accommodate both 12- and 24-volt electrical systems.

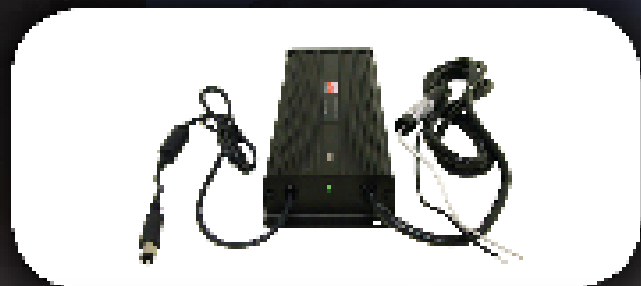
The new Opti-Brite TLL30FB is the third miniature LED work lamp to be introduced by Optronics and, like all other work lamps in the Opti-Brite line, will now be covered by the company’s one-diode lifetime warranty that replaces the lamp if even one diode fails.

www.optronicsinc.com •





ISOLATED PROTECTION TO PREVENT GROUND LOOPS



The Lind Isolated Power Adapter provides a regulated, isolated DC output to power laptops, thin clients, monitors and other devices from a DC voltage source. Output and input DC returns are isolated, allowing the prevention of possible electrical noise caused by ground loops.

Lind's Isolated Power Adapter is built to work with most existing laptop brands and models. These adapters can also be designed for custom applications. Contact Lind to discuss solutions for your exact mobile power needs.

The Isolated Power Adapter's electronics are enclosed by an epoxy-sealed case to protect the internal circuits from damage caused by shock and/or vibration. Its durable construction withstands extensive wear and tear in any harsh mobile environment. Snap-in connectors make replacing missing or damaged cables from anywhere in the field easy and hassle-free.



POWER SPECIALISTS FOR
MOBILE COMPUTING



The All New Takeuchi TB210R

Takeuchi-US, an innovative global leader in compact equipment, has recently updated its compact excavator lineup with the introduction of the all-new TB210R. The Takeuchi TB210R has many new and exciting features that enhance performance, durability, and serviceability. One of the key features is the minimal tail swing design. Couple that with a retractable undercarriage, a backfill blade that can go from 40.2" wide down to 29.5" wide, and a new foldable ROPS/TOPS canopy that can reduce the machine's overall height, and you have a machine that can gain access to and work in some of the most confined applications.

Upgrades to the TB210R include pilot-operated joystick controls with an ISO/SAE control pattern change valve, selector valve, and pilot accumulator. Pilot controls deliver excellent fine control and responsiveness for greater productivity and reduced operator fatigue, while the addition of the ISO/SAE pattern change valve allows the operator to choose a preferred operational pattern.

www.takeuchi-us.com



Amerex Corporation
 P.O. Box 81 • Trussville, AL 35173
 Ph: (206) 666-3271 • Fax: 800-954-5980
 email: sales@amerex-fire.com
www.amerex-fire.com

"Quality is Behind the Diamond"




ISO 9001 & 14001
 OHSAS 18001
 CERTIFIED

EXTINGUISHERS AND FIRE SYSTEMS

INDUSTRIAL • RESTAURANT • MINING • UTILITY • FACILITY
 WASTE MANAGEMENT • FORESTRY • AGRICULTURE
 SERVER ROOM • TELECOMMUNICATION • AIRCRAFT
 AIRPORT • CONSTRUCTION • OFF-SHORE PLATFORM
 REFINERY • TRANSIT BUS • MANUFACTURING
 VESSEL • MILITARY VEHICLE...MORE!



Designed and Assembled in the USA!

MANITEX UNDERSTANDS

THE UTILITY INDUSTRIES

WITH MANITEX,
CRANES CAN BE
USED AS A LIFT
CRANE AND AN
AERIAL WORK
PLATFORM IN
THE SAME DAY!

NEW DUAL PURPOSE MACHINE

IDEAL FOR UTILITY
CONTRACTORS WITH WORKING
HEIGHT UP TO 209 FT

A92.2 CERTIFICATION

Available now on the TC500/501555/5111 and the new TC400/TC450 models.

The dual-rating option can be ordered from factory or as upgrade to qualifying existing fleet. The A92.2 option includes lift crane and aerial platform operating modes, radio remote controls and "Quick Attach" personnel basket.

The new option eliminates the need for basket test weights, saving you valuable time and greatly increasing productivity.

MANITEX IS A DIVISION OF HYUNDAI HYDRAULIC CRANES, A DIVISION OF HYUNDAI CONSTRUCTION EQUIPMENT

The New 34142 From Elliott Equipment



Elliott Equipment Company is announcing the development of the company's newest track vehicle mounted boom truck model, the 34142, featuring a 34-ton capacity, 142 ft. main boom, and a telescopic jib. The 34142 track-vehicle crane was purpose-built to serve the utility transmission construction industry in off-road applications that require a track-vehicle mounted solution with both material handling capabilities as well as the ability to lift personnel to assemble transmission lines.

Developed in partnership with Scott Powerline & Utility Equipment and PowerTraxx vehicles, the 34142 is designed to provide over 207 ft. of vertical reach with a two-man work platform, while maintaining a low enough weight to allow for mounting on the PowerTraxx 15SXW-H mid-size track carrier that reduces rental and transportation costs.

www.elliotequip.com •

LED Lensed Retrofit Kit By MaxLite

One of the easiest ways to elevate the look and efficiency of a space is through a lighting renovation - a job that can be completed in mere minutes with the new LED Lensed Retrofit Kit by MaxLite.

The LRK installs into existing troffers without the need to enter the ceiling space, giving facility managers the quickest, most cost effective means of replacing outdated fluorescent lighting systems with the high efficiency and performance of LEDs. With a profile measuring less than three inches in depth, the LRK is designed to fit standard 2-by-2 and 2-by-4-foot troffers with ease. In most cases, installation of the LRK takes less than 10 minutes.

The LED retrofit kit consumes 40 percent less energy and lasts far longer than the fluorescent lighting it replaces, with an industry-leading lifetime of 100,000 hours at L70 standards. The kit has a sleek, contemporary appearance designed to enhance office, retail, healthcare, education and hospitality interiors. With its clean look and high efficiency, the kit is an ideal replacement solution for businesses faced with replacing obsolete T12 fluorescent tubes.

www.maxlite.com •

**Weather Resistant
Solid Brass Padlocks**
Made to your specifications in the U.S.A.

HERCULOCK
Hercules Industries, U.S.A.

HERCULES INDUSTRIES, INC.
Manufacturer of HERCULOCK Padlocks
P.O. Box 197 • Prospect, Ohio 43342
Toll Free: 1-800-345-2590
Fax: (740) 494-2274
www.HERCULOCK.com

**WHAT IF ONE SIMPLE TOOL
COULD HELP REDUCE
LINEMEN INJURIES?**

1. LOWER INCIDENCE OF ARC FLASH AND ARC FAULT EVENTS
2. CUT ACCIDENTAL CONTACTS
3. PREVENT RUBBER GLOVE PUNCTURES
4. REDUCE LINE WORKER BURNS AND SUFFERING
5. PREVENT LOST TIME AND EXPENSE DUE TO INJURY, COLLATERAL DAMAGE, ACCIDENT INVESTIGATIONS, WORKMAN'S COMP AND CUSTOMER OUTAGES
6. SUSTAIN AND IMPROVE SAFETY PERFORMANCE NUMBERS

TWISTOOL™

TWISTOOL will do these things and more.
Phone 641-425-2655 and ask for a free trial
Check us out at: www.twistool.com



PELSUE®

TRADITION • INNOVATION

Vehicle Upfitting and Custom Trailers



Truck Chassis



Cargo Vans



High-Roof Vans



Fiberlite XL Trailer



Fiberlite POD Trailer

Company	Pg.	Website
Albarrie Geo Composites	15	www.albarrie.com
Amerex	28	www.amerex-fire.com
American Pipe & Plastics	7	www.ampipe.com
American Technical Publishers	8	www.atplearning.com
Buccaneer Rops Co	4	www.bucrope.com
Elk River	24	www.elkriver.com
EZ Stak	6	www.ezstak.com
Golight	13	www.golight.com
Hastings Fiber Glass	9	www.hfpg.com
Herculock	30	www.herculock.com
Hoffman Boots	10	www.hoffmanboots.com
Hogg & Davis	3	www.hoggdavis.com
iToolco	21	www.itoolco.com
Krenz Vent	2	www.krenzvent.com
Lind Electronics	27	www.lindelectronics.com
Manitex	29	www.manitexinternational.com
Morooka	32	www.morookacarriers.com
Nesco	BC	www.nescorentals.com
Pelsue	31	www.pelsue.com
Precision Sales & Service	11	www.alternatefuel.com
Rayco	16	www.rayco.com
Ring Power	17	www.ringpower.com
Surge Suppression	IFC	www.surgesuppression.com
Time Versalift	1	www.versalift.com
TSE International Inc	IBC	www.tse-international.com
Twistool	30	www.twistool.com
Utility Metals	25	www.utilitymetals.com
Venco Venturo	19	www.venturo.com
Versatran	23	www.versatraninc.com
Winches, Inc	5	www.winchesinc.com

MOROOKA

SERVING THE UTILITY INDUSTRY NATIONWIDE

PRODUCT ATTACHMENT APPLICATIONS:

- Digger Derricks
- Field Service Equipment
- Telescopic Buckets
- Boom Cranes
- Personnel Carrier

MADE IN AMERICA

To locate a dealer near you, call 877-667-6652 or visit us at morookacarriers.com

MOROOKA

Designed to meet your underground cable pulling needs



UP-120-80H1
Underground Puller



UP-70-110
Underground Puller



UP-85-8D
Underground Puller



S660 Sewer Rodder



CP9800 Articulated Boom Puller

Exclusive US Supplier



www.tse-international.com



TIMBERLAND
EQUIPMENT SOLUTIONS GROUP

NESCO

SUPERIOR

**CUSTOMER
SERVICE**

RESPONSIVENESS AND SUPPORT SECOND TO NONE

NESCO Rentals® isn't just a premier provider of utility rental equipment, but a leader in responsiveness and support for all customers. Dedicated rental and service teams, combined with one of the industry's largest rental fleets, ensure NESCO meets your job site needs. Call us now to experience our superior customer service.



Visit our website, build a quote, outfit your vehicles and get to work.

(800) 252-0043 | www.nescorentals.com

