

THE **UTILITYSOURCE**

March 2016

Products and Services for Today's Electric, Telecom, and CATV Utilities

Shedding Light on Safety and Productivity



**Pickup
Storage
Solutions**



PICKUP & SERVICE BODY DRAWERS
MODULAR WORK TRUCK INTERIORS



COME BY AND SEE US AT
BOOTH 4699

NEW PRODUCTS WILL BE ON DISPLAY

EZ STAK 550 Albion Ave. Schaumburg, IL 60193
630.994.3300 www.EZSTAK.com



NEW FOR 2016



Venturo Van Crane

With the increased demand of work vans in the industry, Venco Venturo has developed a **small crane** application that will increase productivity at any job site. Designed for use within the rear cargo area, the new van crane from Venturo will retain the rugged designs that have set the standard of our cranes for generations.

To learn more, visit www.venturo.com.



TRUCK-MOUNTED CRANES, CRANE BODIES & HOISTS



VENCO VENTURO INDUSTRIES LLC

12110 BEST PLACE | CINCINNATI, OHIO 45241

800-226-2238 | info@venturo.com | www.venturo.com



PG 4	Industry News
PG 8	Pickup Storage Solutions
PG 12	Shedding Light on Safety & Productivity
PG 20	New Product Focus: Miller SkyORB Overhead Rotational Boom Anchor
PG 22	New Product Focus: Manitex, Inc. Adds the 30112S to the TC Lineup of Truck Mounted Cranes
PG 24	New Product News
PG 32	Ad Index

ASSOCIATE GROUP
PUBLISHER

Rick Harless
205-624-3794
rick@handfmedia.net

EDITOR

Annie McGilvray
annie@handfmedia.net

CREATIVE/WEB DIRECTOR

Jacklyn Greenhill
jacklyn@handfmedia.net

ADMINISTRATIVE
DIRECTOR

Steven Hobson
steven@handfmedia.net

CEO
Christy Hobson

PRESIDENT
Glen Hobson



Executive and Advertising Offices

PO Box 1568
Pelham, AL 35124
phone: 205-441-5591 fax: 205-624-3354
www.theutilitysource.net
glen@handfmedia.net

The Utility Source™ is published twelve times a year on a monthly basis by H&F Media Group, Inc. The Utility Source™ is distributed free to qualified subscribers. Non-qualified subscription rates are \$57.00 per year in the U.S. and Canada and \$84.00 per year for foreign subscribers (surface mail). U.S. Postage paid at Birmingham, Alabama and additional mailing offices.

The Utility Source™ is distributed to Power, Telcom and CATV Utilities and Utility Contractors throughout the USA. Publisher is not liable for all content (including editorial and illustrations provided by advertisers) of advertisements published and does not accept responsibility for any claims made against the publisher. It is the advertiser's or agency's responsibility to obtain appropriate releases on any item or individuals pictured in an advertisement. Reproduction of this magazine in whole or in part is prohibited without prior written permission from the publisher.

POSTMASTER: Send address changes to
H&F Media Group, Inc., P.O. Box 1568
Pelham, AL 35124
PRINTED IN THE USA

Get Cool!



Extend
transformer
life!

Increase
transformer
capacity up
to 166%!

- expert technical assistance
- large inventory
- low sound levels
- one-piece cast aluminum blades
- energy-efficient motors
- galvanized or stainless steel guards



quality engineered, performance tested

Rugged Dependability

STANDARD IN EVERY MACHINE WE BUILD!

*Hogg & Davis has been proudly
manufacturing utility line equipment
for more than half a century.*



*Our trusted products are part
of the fleets and tool cribs of
nearly every investor-owned
power and communications
company in the United States
and beyond.*



HD

HOGG & DAVIS, Inc.

HOGG & DAVIS, INC.

3800 EAGLE LOOP • OREGON, OR 97044

TEL 541.354.1001 • FAX 541.354.1080

WWW.HOGGDAVIS.COM

ALL Family of Companies Purchases 5 New Liebherr ATs



The ALL Family of Companies has strengthened their all-terrain crane fleet with five (5) new Liebherr ATs, all featuring an innovative crane support system. The purchase was part of ALL's commitment to continually investing in the newest and best equipment and a response to increased demand for cranes in specific markets. The Liebherr ATs, with a wide range of boom lengths and lifting capacities, will be diverted to locations where demand is heaviest, but will generally serve customers in Cleveland, the Carolinas, branches serving the northern part of the U.S., and ALL locations in Canada.

The new Liebherr ATs, scheduled for delivery in spring and summer of 2016, include:

- Two 70-USt LTM 1060-3.1: one will be shared among the Central Rent-A-Crane (Indiana) branches, Central Contractors Service branches (Illinois), and ALL Canada Crane locations, and the second will go into the general company fleet
- One 65-USt LTM 1055-3.2, going to ALL Carolina Crane
- One 240-USt LTM 1200-5.1, going to ALL Carolina Crane
- One 265-USt LTM 1220-5.2, going to the main yard in Cleveland

www.allcrane.com •

SGIP Leads New Utility Focused Group

Grid operations technology and business leaders from utilities across North America will join forces to explore and determine requirements for grid modernization.

The Smart Grid Interoperability Panel (SGIP) leads a newly formed utility-focused consortium group to explore the technologies, concepts, capabilities, and architecture principles required to manage a more complex grid.

The utility-focused working group will encourage members to share use cases, collaborate on business, technical, and architectural requirements, exchange insights and coordinate on research and development opportunities that will help drive vendor solutions and industry standards.

www.sgip.org •

ALL Family of Companies Purchases 5 New Liebherr ATs



Atlas Copco is breaking ground on a new 180,000-square-foot facility in Rock Hill, South Carolina to meet the growing customer demand for high-quality equipment and support. The \$20 million project will serve as the new production and assembly facility for Atlas Copco's North American Construction Technique division.

"From products to general support, we're committed to being close to the customer. This new facility will be one of our flagship sites when it comes to North American manufacturing excellence, including sustainable productivity, a goal we put forward for ourselves and our customers," said Erik Sparby, general manager for Atlas Copco Construction Equipment.

Atlas Copco's new Leadership in Energy & Environmental Design-certified facility will help the company grow with customers' demands and offer a wide reach of customer support. Once completed, the Rock Hill facility will produce portable generators and compressors as well as other construction equipment. Atlas Copco expects the new facility to open in April 2017.

www.atlascopco.us/usus/ •

The New NESCO Specialty Rentals Division

NESCO, LLC announced today the addition of a new division; NESCO Specialty Rentals™. This new division expands NESCO's current product offerings to address the needs of the rail, telecom, lighting, sign and other specialty equipment use industries. Specialized equipment includes: hi-rail equipment, fiber optic trailers and pullers, cable placers, sign and lighting trucks, boom trucks, knuckle cranes, and much more.

Tim Bryan, President of NESCO Specialty Rentals™, brings over 17 years of experience specializing in creating custom specialty fleet rental solutions. "The time is right to provide a national rental solution for the rail, telecom, sign, lighting and other specialty equipment markets. In particular, our commitment to focus on these markets and development of a specialty fleet will be a game changer for our industry," stated Mr. Bryan.

Mike McDonald, Vice President of Strategic Accounts for the new division hopes, "to become the most trusted equipment provider for the rail, telecom, lighting, sign and other industries growing to be a key partner in the efforts to maintain and construct infrastructure in North America."

www.nescorentals.com •

P 650 i HIGH INSULATED ACCESS PLATFORM



INSULATED WASHER

PALFINGER's P 650 i is a high insulated access platform with a built-in insulated washer. It's designed for use in high-voltage environments, providing safe and efficient access to high-voltage equipment.



HIGHLY EFFICIENT

The P 650 i is a highly efficient access platform. It features a built-in insulated washer, which allows for efficient cleaning of high-voltage equipment. The platform is also equipped with a built-in hydraulic system, which allows for easy and safe handling of the platform.



EASY AND SAFE HANDLING

The P 650 i is designed for easy and safe handling. It features a built-in hydraulic system, which allows for easy and safe handling of the platform. The platform is also equipped with a built-in safety system, which ensures the safety of the operator and the equipment.



COMPACT AND FLEXIBLE

The P 650 i is a compact and flexible access platform. It features a built-in hydraulic system, which allows for easy and safe handling of the platform. The platform is also equipped with a built-in safety system, which ensures the safety of the operator and the equipment.

For more information on the P 650 i, please contact your local Palfinger distributor. The P 650 i is a highly efficient access platform, which is designed for use in high-voltage environments. It features a built-in insulated washer, which allows for efficient cleaning of high-voltage equipment. The platform is also equipped with a built-in hydraulic system, which allows for easy and safe handling of the platform. The platform is also equipped with a built-in safety system, which ensures the safety of the operator and the equipment.

PALFINGER

LIFETIME EXCELLENCE

SEE IT AT IQUEE
BOOTH L-315

WWW.PALFINGER.COM

Megger's 15th Annual Distributor Golf Event



Megger held its 15th annual Megger Distributor Golf Event on Saturday, January 23 and raised \$7,500 for Phoenix Children's Hospital Foundation. The event, held at Ahwatukee Country Club in Phoenix, Arizona, is organized in honor of 19 year old cancer graduate Tyler Danner, who is a sophomore at Northern Arizona University.

David Danner, national distribution manager for Megger, as well as Tyler's father and event co-coordinator said, "We are reminded each year what a wonderful cause this is. This year we had over 110 golfers participate. Their enthusiasm and love of the event touches us beyond words."

www.us.megger.com

Takeuchi-US Announces Two Parts Department Promotions

Takeuchi-US, a global innovation leader in compact equipment, has announced two promotions in their parts department. Bethany Klitzke has been promoted to the role of National Parts Manager, while Scott Utzman has taken on the newly created role of Customer Support Manager.



As National Parts Manager, Klitzke will manage parts and attachment inventory. She is responsible for inventory accuracy, availability and parts sales growth. With an expanding parts department, Takeuchi created the new role of Customer Support Manager, promoting Utzman to the position. He will work closely with Takeuchi dealers to further relationships and gather key information on how the company can improve practices and better support the dealer's business.



"Bethany and Scott very much deserve these promotions and they will make us even stronger in our parts department," said Mike Ross, Director of Operations at Takeuchi-US.

www.takeuchi-us.com

MOROOKA

SERVING THE UTILITY INDUSTRY NATIONWIDE

PRODUCT ATTACHMENT APPLICATIONS:

- Digger Derricks
- Field Service Equipment
- Telescopic Buckets
- Boom Cranes
- Personnel Carrier

MADE IN AMERICA

To locate a dealer near you, call 877-667-6652
or visit us at morookacarriers.com



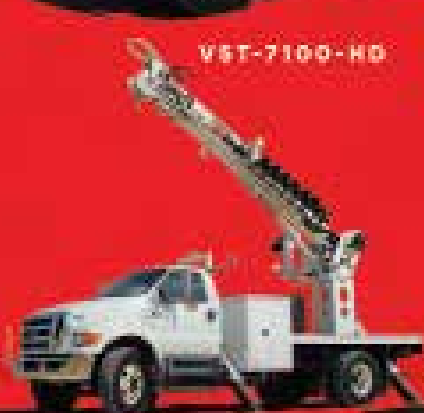
VERSALIFT®



VST-7100-HD

PHX-180-1

SKYBIRD-T2151



TMD DIGGER DERRICK



VTP-40-NE
CABLE PLACER



VANTEL-29-NE



TEL-29-NE

DEMAND BETTER. DEMAND VERSALIFT.



VERSALIFT



TIME
MANUFACTURING COMPANY

As the world's leading aerial lift manufacturer, **Time Manufacturing** formulates aerial products safe and more efficient for its customers. Since 1965, the **VERSALIFT** product line has grown to now include over 50 model choices - whether it be a 28' unit, or one extending up to 215 feet, there's a VERSALIFT to get the job done.

For more information

Visit
254.399.2100
www.VERSALIFT.com

VERSALIFT - Time Manufacturing 7661 Imperial Drive Waco, Texas 76712 | 254-399-2100 | www.VERSALIFT.com

Pickup Storage Solutions

Since 1998, EZ STAK has been an industry leader and manufacturer of vehicle interior storage systems for service utility work trucks and vans. EZ STAK's innovative fleet vehicle upfitting products are used extensively by municipalities as well as large corporations in the utility, telecom, cable, oil and gas and construction industries.

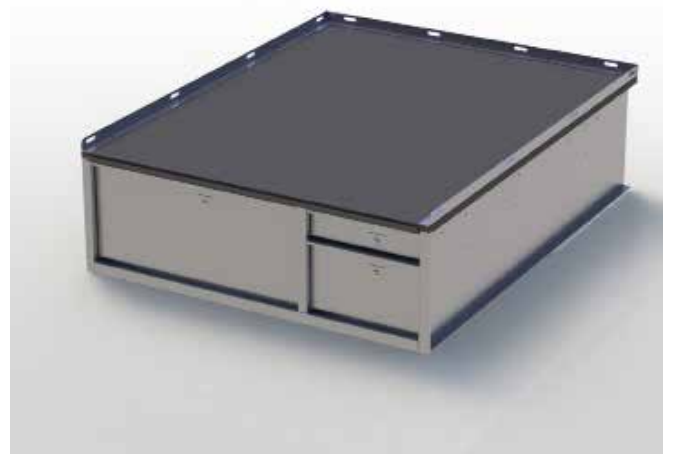
This March at the annual NTEA Work Truck Show in Indianapolis they are rolling out their new EZ STOW product line that focuses on the expanding market demand for pickup storage drawers. Their many pickup storage solutions are available for Chevy, Ford and Dodge pickup trucks.

Manufactured with high grade 0.100 North American aluminum the EZ STOW drawers provide a durable solution for contractors that want to secure and organize their tools and materials. The drawer fronts feature a strong formed top edge that acts as the handle with each drawer being supported with heavy duty ball bearing drawer slides. Another important feature is their unique EZ LATCH that allows for fast and easy one handed opening.



The EZ STOW "MAX" and MAXIMIZER pickup drawers unit provide maximum storage. Choose from the

MAX 40 or the MAXIMIZER 3. Standard is an anti-skid coating on the top with cargo tie down rail, adjustable dividers and rubber mats in all drawers. Available in 12", 16" & 20" heights, 48" width and 48", 60" & 72" depths.



The EZ STOW SIDEKICK two drawer unit capitalizes on the unusable storage space over either wheelwell. Each drawer fully extends on ball bearing slides rated at 200 pounds total capacity. Standard is an anti-skid coating



POWER. HARNESSSED.

MSA's premium EVOTEC™ Arc Flash-Rated Harness provides outstanding fall protection for utility companies and contractors working at heights. Its rugged design looks good on the job and is 25% lighter than comparable harnesses. Moreover, MSA's Arc Flash-Rated EVOTEC Harness is fire resistant, so it maintains its performance in the event of a fire, fall, or a flash.

MSA's Workman™ Arc Flash-Rated Harness provides excellent fall protection in a sleek, black design that's lightweight and comfortable. The high strength of its webbing makes it ideal for electricians, linemen, and technicians in the event of a fall. The Workman Arc Flash-Rated harness is a cost-effective option for safety managers and contractors who need to be compliant to the latest electrical safety code when climbing the tower.

Learn more at MSAsafety.com/ArcFlash

FALL PROTECTION SOLUTIONS



©2013 MSA and

WE HAVE THE ROPE TO GET THE JOB DONE.




Buccaneer Rope
COMPANY

800-358-767

www.bucrope.com

on the top, dividers and rubber mats in all drawers. Install one over each wheelwell and you will still have the truck bed available for hauling supplies.



The new EZ STOW MAX 10 is a smaller scaled down storage drawer unit that keeps your supplies organized and the bed space open. It holds hundreds of pounds of tools and supplies. The EZ STOW MAX 10 comes with standard anti-skid coating on the top, adjustable dividers and rubber mats in all drawers.



The EZ STAK sales staff can help with configuring the right solution for your pickup storage needs at 630.994.3300. Check out their complete product offering at www.EZSTAK.com.

www.EZSTAK.com •

Protect yourself from "Arc Flash"

ARC FLASH HOOD WITH V¹² HIGH-VOLUME VENTILATOR Compact. Powerful. Reliable

Our V¹² High-Volume Ventilator boasts an unexpectedly quiet, high output (35+ CFM) turbine fan to cool and circulate the ambient air within the hood. Fully protected beneath it's durable ABS shell and added fabric layering, the V¹² High-Volume Ventilator isn't just compliant, it's superior.



40 CAL/CM2 ULTRALIGHT CLOTHING BY OTEX

Our new dual-layer Ultralight clothing takes advantage of DuPont's® dedication to scientific advancement and Westex's® industry leading dependability. Weighing in 37% lighter than traditional HRC4 PPE, our Ultralight Clothing is the most innovative contender in the lightweight arena.

HYBRID LAYERING

Combined Fabric Weight: 14 oz

Outer Layer: DuPont® Protera
Color: Navy

Inner Layer: Westex Ultrasoft
Color: Safety Orange

FOR FREE INFO, CIRCLE 20 ON READER SERVICE CARD

CALL US TODAY

(703) 367-0404

OR VISIT OUR ONLINE ELECTRICAL SAFETY EQUIPMENT STORE

www.millersafetyltd.com



Shedding Light on Safety and Productivity






When it comes to work lights, fleets sometimes stick to specifications that are outdated and end up with lamps in fixed position format that don't perform to the capacity that workers need for safety and productivity today. This is often a function of a lack of understanding of what's now available and the rapidly changing value proposition associated with more advanced lighting technology.

OSHA standards for lighting are somewhat vague for motor vehicles as covered by 1926.601(a) are for those vehicles that operate within an off high-way job-site, not open to public traffic. Standards for 1926.601(b)(2)(i) state: Whenever visibility conditions warrant additional light, all vehicles, or combinations of vehicles, in use shall be equipped with at least two headlights and two taillights in operable condition, so the regulations are less than adequate.

Lighting configurations on every service vehicle should be in alignment with its duties in the field and should take into consideration all types of conditions that the vehicle and its crew may encounter while engaged in the performance of their duties in the field.

**Weather Resistant
Solid Brass Padlocks**
Made to your specifications in the U.S.A.



HERCULOCK
Hercules Industries, U.S.A.

HERCULES INDUSTRIES, INC.
Manufacturer of HERCULOCK Padlocks
P.O. Box 197 • Prospect, Ohio 43342
Toll Free: 1-800-345-2590
Fax: (740) 494-2274
www.HERCULOCK.com



Question is, what types of exterior lights are available today and what are the most important lights?

1) Pan & tilt remote-controlled LED work lights:
Golight introduced its remote controlled RadioRay work lamp more than two decades ago and today has more than 20 years of advanced electronic and optical engineering experience in the remote-controlled work light arena. Users can direct a brilliant LED beam anywhere they need it, by simply manipulating the lamp's remote control. Workmen can even adjust the RadioRay's beam direction while suspended in a bucket above their vehicle.

2) Fixed-position LED work lights: Permanently mounted, manually adjustable LED work lights have been around since the beginning. Golight's new GXL 4021 represents the company's expansion of its permanently mounted, manually adjustable LED work lights and is the smallest of the four lights it now offers in that category. The light's small size and surprising illumination power is a byproduct of its space-saving "LED cluster" design, combining four clusters of four high-powered LEDs to generate a maximum output of 4,500 lumens. The raw power of the light's 16 LEDs is controlled through the use of three versatile polycarbonate lenses. Changing lenses is easy and users can switch between spot, flood and combination spot/flood lenses as the need arises. The powerful new LED work light has been condensed

Optimize Fleet Productivity



CFA Software
FLEET MAINTENANCE & INVENTORY
CONTROL SOFTWARE SOLUTIONS
SINCE 1969

CFAWin

- ✓ Evaluate & Improve Fuel Economy
- ✓ Automate PM Tracking
- ✓ Increase Warranty Recovery
- ✓ Analyze Life-Cycle Costs & Trends

Why CFA Software?

- ✦ Over 40 Years Experience
- ✦ Superior Product Support
- ✦ Low TCO
- ✦ Free Implementation Assistance

Shop Floor

- ✓ Technician-Friendly Interface
- ✓ Allows RO Entry In Shop Environment
- ✓ Repair Time Clock Feature
- ✓ View Equipment Repair History

e-Service Request

- ✓ Submit & View Service Requests Online
- ✓ Provide Audit Trail of Submitted Requests
- ✓ Reduce & Automate Data Entry

**Call for
a FREE
Demo!**

CFA Software
800.437.6001 • www.CFASoftware.com

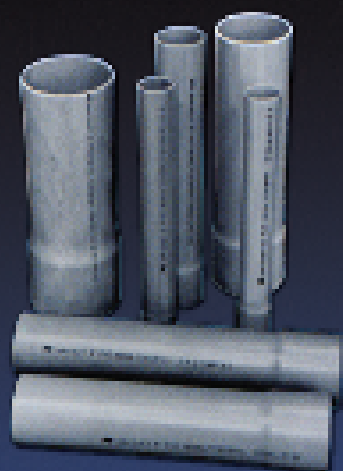


**american
pipe &
plastics Inc.**

PART OF **A** **atkore**
INTERNATIONAL



AMDUCT POWER, COMMUNICATIONS AND ELECTRICAL CONDUIT



- Manufactured to meet NEMA TC2, NEMA TC6/8, ASTM F512 and UL651.
- Sweeps, bends, and fittings are manufactured to meet NEMA TC3, NEMA TC9 and UL651.
- Our PVC Conduit has a smooth bore that reduces cable drag.
- Lightweight, flexible, easy to handle and resistant to impact.
- The solvent welded joints ensure water tight integrity excellent resistance to chemicals, rot, rust and electrolytic corrosion.

www.ampipe.com – (607) 775-4340



**CAN ONE HITCH TAKE CARE
OF ALL YOUR TOWING NEEDS?**



TOWING MADE EASY

Available in Class IV & V with 10K, 15K & 21K lb. weight capacities. Safely and efficiently move any trailer without having to swap out hitches.

GEN-Y HITCH
BY GENY INDUSTRIES

574-218-6363

www.GenyHitch.com

Made in the USA

LINE WARD
CORPORATION



**Built to efficiently bury or pull underground
cable, pipe or fiber optics.**

INFO@LINEWARD.COM

(800)-816-9821

WWW.LINEWARD.COM

into a deceptively small format that makes it an extremely versatile light source that is easy to mount virtually anywhere on a vehicle. The light's hardened aluminum housing is ultra-resilient, and combined with the lights solid-state electronics, has been engineered for extreme super-duty service with an impact g-force survivability rating of 40 Gs.

Advancements in size, efficiency and intensity of LED lighting are continuing at a rapid pace. It's not unusual for significant increases in LED performance to occur between the time a new LED lamp is first conceived of and the time it first rolls off the production line, making its performance characteristics better than originally planned. Significant changes and/or developments have taken place and the marketplace continues to enjoy the ever-improving benefits of LEDs, including more light per unit of power consumption.

On the horizon are further increases in LED efficiency and intensity and advanced remote control features that will bring further safety and convenience to both vehicles and workers.

www.golight.com •



**THE
POWER
GRIPZ**
Leather Protectors
.COM

Robert
Reid Inc.

*Designed by Linemen,
for Linemen.*

100% compliant, untreated
gloves of all sizes, made
with the finest leather
available.

The Power Gripz are the only gloves
tested and proven to be superior
for grip, arm protection and
all-weather dexterity.

Proven, 31 hand-fitted
finger grips and palms
matched to the work of
a lineman.

Patented welding grip
material covers entire
palms for serious grip on
tools, rods and gear.

Reinforced outside cuff
adds an extra layer of safety
protection.

Low and High-Voltage Liner
Finger Leather Protectors, available
in sizes: 8-8.5 through 12-12.5;
Three Finger Mitts sizes 9-11.
Three styles of work gloves: M, L and XL.

ATV ratings: All styles: 100% ATP rating: 100%.

Ultimate Protection. Maximum Comfort.

Talk to
ArcWear

Call: 877.271.0444
or order online at
www.ThePowerGripz.com

ELECTRIC UTILITY FLEET MANAGERS CONFERENCE

SOLUTIONS FOR MANAGING A PROGRESSIVE FLEET

JUNE 5-8, 2016

**WILLIAMSBURG LODGE
& CONFERENCE CENTER**

WILLIAMSBURG, VIRGINIA

EUFMC

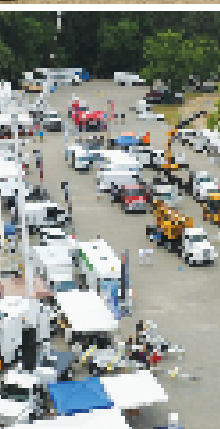
WILLIAMSBURG, VA

EST. 1983



Join **fleet professionals** from **investor-owned** electric utilities, electric cooperatives and electrical contractors from across the U.S. and Canada at the industry's premier educational event featuring:

- Presentations by industry experts, manufacturers and fleets
- Roundtables where fleet professionals and representatives from manufacturers and service providers share best practices
- A drive through utility equipment demonstration and an exhibition of the latest equipment and services for utility fleets



Dedicated to providing
educational value to
utility fleet professionals

**REGISTER
TODAY!**



757.220.1795

eufmc.com

Platinum Sponsors



Attec

FREIGHTLINER

WORK SMART

BRIDGESTONE

DEEPO
U.S. POWER

Telogis

ETI

QUICKEN+PLAY

TEREX

**BUILT
TOUGH**





POWER YOUR WORKFORCE



WITH **XPLORE** RUGGED TABLET TECHNOLOGY

Xplore® is the #1 provider of rugged tablets to the Utility market.* With nearly two decades of experience delivering purpose-built mobile tablet solutions, Xplore understands the unique demands of the utilities industry's work environments. Mobile workers can experience full computing capabilities from the office, to the vehicle and into the field without interruption. Equipped with a full suite of accessories, integrated features and in-vehicle solutions, Xplore rugged tablets not only deliver excellent customer service to the end user by improving productivity and enabling real-time decision making at the point of service with features including:



Real-Time Data
Transmission



Long Battery
Life



Sunlight-Readable
Display



Light Weight



Many Integrated
Options

*Source: Frost & Sullivan

DISTRIBUTECH
CONFERENCE & EXHIBITION
FOCUSED ON THE FUTURE

Visit Xplore in booth 955 at DistributeCH to see how our rugged mobile computing solutions can work for you and register to win an XSLATE B10.

www.xplorettech.com/distributtech | www.motioncomputing.com | Call: 1-866-682-2538



Miller SkyORB™ Overhead Rotational Boom Anchor

The new Miller SkyORB Overhead Rotational Boom Anchor provides a safe overhead anchorage that is designed specifically for use around vehicles, utilizing the vehicle weight to secure the anchor for proper fall arrest, eliminating the need for heavy and bulky counter weights. The SkyORB Anchor is a pre-engineered system that replaces the need for very expensive, custom engineered, fixed overhead anchor systems.

Features/Benefits:

- Provides the worker with an easy and quick connection with their fall arrest system while working at height.
- Designed to eliminate the need for heavy and bulky counter weights by utilizing vehicle weight to safely secure the system in place.
- Weighing only 1,050 lbs. (476 kg), it is significantly lighter than competitive systems on the market, making the SkyORB Anchor more versatile.
- The modular design is easy to assemble and transport only using a forklift.
- The adjustable telescoping mast allows the height of the system to be varied from 14 ft. - 20 ft. (in 1 ft. increments) to accommodate lower roofs and overhead obstacles.

www.millerfallprotection.com •

The SorbWeb™ Plus

Solution

OIL REACTIVE FABRIC

A Better Solution

Engineered Secondary Oil Containment System allows water to pass through but seals on contact with oil.

- Robust engineered solution
- Our Oilmat has the highest polymer loading in the industry with a minimum 2500 g/m² or 73.7 oz/yd²
- Installations follow a rigorous quality control protocol to ensure the containment is properly installed
- Designed to allow for vehicle access up to a max of 26,000 Kg/group of axle



1.866.269.8275 x 0235 | www.albarrie.com



Manitex, Inc. Adds the 30112S to the TC Lineup of Truck Mounted Cranes

Manitex, Inc. based in Georgetown, Texas a leading manufacturer of boom trucks and truck mounted cranes has added the 30112S to the TC lineup of truck mounted cranes. The TC300 incorporates a new deluxe cab capable of inclining up to 20 degrees for optimal operator comfort.

The inclining cab is ideal for lifting on multi-level building roof tops, roofing, HVAC and truss setting applications and reduces operator fatigue.

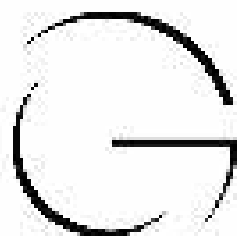
The new cab offering features 18" extended leg room and additional storage behind the operator's seat. Standard features include:

- Heated seat and diesel heater
- 4- Single axis low effort pilot operated hydraulic controls.
- Hirschmann I-Scale Load moment indicator
- 12 volt DC outlet, USB Port and cup holder
- E-coat cab finish protects against corrosion
- Rear Pop-out Window
- Top hinged window with wiper/washer and hatch guard
- Windshield Wiper with spray nozzle and pump
- Engine parameters can now be viewed from main display

Optional equipment:

- Air conditioning
- Video camera(s)
- Weather Band Radio

www.manitex.com •



GOLIGHT

Revolutionary Lighting Solutions



Durable...Versatile...Powerful...GUARANTEED



When the going gets tough, some workers rely on traditional lanterns to stream out their yards and march into the elements to get some critical service back online. More often than not, that means battling wind, rain, snow and ice and being so in the dark. In those conditions, light that can be dynamically directed where it is needed, when it is needed is an essential tool for safety and productivity. In both emergency situations and day-to-day operations, Golight has proven to be a vital tool in extending work hours and increasing productivity. Golight has been a partner to the men and women who keep our lights on for almost 20 years and we are committed to seeing that relationship grow and develop.



KOOLERS... BANDANNAS... DECALS... Send an email to media@golight.com and let us know you saw our ad in "THE OUTLIER SOURCE" and we will send you some Linean branded merchandise.



GOLIGHT

Coxreels Biodiesel Reels

Biodiesel is one of the most common alternative fuels in use today. Chemically named methyl esters, biodiesel is produced from various sources such as agricultural oils (soy, corn, canola, etc.), recycled cooking oil, and animal fats. Due to the reactive nature of biodiesel, consideration of seals and materials is needed when choosing a hose reel and plumbing.

If the biodiesel concentration is B5 or less, the biodiesel will have such small affect that it will behave exactly as standard diesel where no special considerations are needed. For biodiesel concentrations of B5 or less, Coxreels recommends the use of our standard fueling reels (SHF or TSHF). For concentrations above B5, stainless steel plumbing should be used with Viton seals and non-sparking pawls. For these circumstances, the following Coxreels products are recommended: SHF-N-525-BBN, TSHF-NXXX-BBN, or TSHL-N-635-BBN. In concentrations above B20, Viton seals must be used along with a special hose. The Coxreels product most suitable for this application is the TSHF-N-620-BBN with the Flexwing VersaFuel Hose.



www.coxreels.com



ARPI of USA™

HOME OF THE

POWER WIRE STRIPPER™

<p>COMC</p> <p>14awg-600mcm</p>  <p>DRM</p> <p>Drill Powered Wire Stripper</p>	<p>RES</p> <p>16awg-250mcm</p> <p>Processes up to 4,200 feet per hour.</p> <p>Strips plastic coated electrical wire safely, economically, and easily.</p> 
---	--

608-873-1920

www.arpiusa.com

Klein Tools New Headlamp



Klein Tools for professionals since 1857, launched its new Illumination line, including a headlamp (Cat. No. 56220) designed specifically for electricians. It features an anti-slip silicone strap that comes pre-adjusted to fit a hard hat. The lamp has a 45-degree tilt, and can be used in spotlight mode (150 lumens, six run hours) or floodlight mode (50 lumens, 10 run hours). It is also impact and water resistant.

"Most headlamps used on jobsites now are designed for activities like camping and hunting," said Laura Ranieri, senior product manager. "They often include extra features like colored LED's or strobe lights that electricians don't use. We designed ours to include essential features used daily by electricians and uniquely secured it with a silicone strap which stays put and won't stretch out."

www.kleintools.com

The Milwaukee Tool M18 FORCE LOGIC 600 MCM

Milwaukee Tool fundamentally changes the way battery operated hydraulic crimpers are used in the field by delivering the single best user experience with the introduction of the M18™ FORCE LOGIC™ 600 MCM* Crimper. Built from the ground up to address the challenges users face on the jobsite, Milwaukee's in-line design and quick-connect, easy-open jaw make Milwaukee's new 600 MCM Crimper easy to operate in the most challenging work environments, delivering superior accuracy and reduced user fatigue. The Milwaukee 600 MCM Crimper, along with Milwaukee U Style Dies, is UL Classified with most #8 – 600MCM Cu and #8 – 350 MCM connectors.**

"Today electricians are using large, clunky, front heavy crimpers to splice or terminate electrical connections. Accuracy of crimp alignment is a key component of crimp integrity. Current crimpers are challenging to align because they're so front heavy, often requiring two people ensure proper crimp placement," said Paige Bovard, Sr. Product Manager for Milwaukee Tool.

www.milwaukeetool.com



Vehicle Upfitting and Custom Trailers



Truck Chassis



Cargo Vans



High-Roof Vans



Fiberlite XL Trailer



Fiberlite POD Trailer



CASE Construction Equipment Introduces New Line of Tier 4 Final Backhoe Loaders

CASE Construction Equipment introduces its line of Tier 4 Final backhoe loaders, including the new 580N EP – a lower-horsepower version of the company's popular 580N backhoe that maintains the same backhoe lift capacity and breakout force with greater fuel efficiency and a maintenance-free Tier 4 Final solution. All CASE N Series backhoes come standard with SiteWatch telematics, and can be outfitted with a variety of industry-exclusive standards/options such as Power Lift, Ride Control, Comfort Steer, ProControl, Easy Flex side lights and a mechanical universal backhoe bucket coupler that allows contractors to use attachments from competitive machines on their CASE backhoe. Each machine is also available in the proven CASE Extendahoe® configuration for extended digging and reach capabilities.

All CASE N Series backhoes feature the company's exclusive over-center design, which transfers weight to the front of the machine for smooth roading and better traction, and allows the operator to dig closer to the machine. N Series controls are simple, with adjustable pilot control towers, a control pattern selector and adjustable wrist rests.

www.caseCE.com

TT Technologies, Aurora III Now Available

TT Technologies, Aurora, III is now offering the latest Prime Drilling HDD drill rig with 135,000 lbs. (600 kN) of pullback. The new Prime Drilling PD 60/30 is compact, yet powerful and technically advanced. Because the unit is self-contained, transport and set up times are greatly reduced time. The unit features a specially designed, space-saving, onboard high-pressure pump ideal for greater maneuverability and jobsite flexibility.

The Prime Drilling PD 60/30 is capable of drilling lengths up to 3,200 feet (1,000 m) with diameters up to 40 inches (1,000 mm). The unit is powered by a water-cooled Deutz diesel engine. A rack & pinion (RP) feed system powers the thrust and pull back functions of the hydraulically powered rotary head.

www.tttechnologies.com



PURPOSE BUILT FORESTRY MOWER/MULCHER 99 HP KUBOTA

TURBO DIESEL ENGINE SUPER FLOW, CLOSED LOOP HYDROSTATIC CUTTER HEAD DRIVE
RAYCO-EXCLUSIVE ELEVATED COOLING DESIGN 17.7-INCH RUBBER TRACKS
2-SPEED TRAVEL EASILY REMOVABLE DEBRIS SCREENS TO PROTECT COOLERS
HYDRAULIC REAR WINCH CAB WITH HEAT AND A/C RAYCO-EXCLUSIVE FORESTRY DOOR
WITH 1.25-INCH LEXAN ESCAPE HATCHES IN ROOFTOP AND REAR WINDOW PREDATOR
MULCHER HEAD WITH VARIABLE DISPLACEMENT HYDRAULIC MOTOR

SEE YOUR DEALER OR CALL 1-800-392.2686

CALL - 800.392.2686

VISIT - RAYCOMFE.COM

Voted by Contractors As The Best Pulling Tools 2014

iTOOLCO



Made in the USA

**Crank Lift and Bearing Spin
Real Jacks RJ6K**

Huge Time Savings

iTOOLCO

PULL SLICK

Fastest When Pulled With the Cannon 10K



Cannon 10K Dual Capstan 4 Speed 10K Tugger "Easy, Strong, & Fast"

iTOOLCO

Demo Today



**9 to 40 Fpm
Made in the USA**

**iToolco.com
865-670-3713**



The New T-7212-P Bullwheel Tensioner

Sherman+Reilly Inc., a Textron Inc. company, has enhanced the towing ability of its Revolution Seriestransmission equipment product line with the addition of a pintle eye trailer configuration for use with line trucks. The new platform of trailers provides reductions in overall weight and allows for a smaller field and storage foot print.

The new pintle eye versions of the Revolution Series can be found on the T-7212-P Bullwheel Tensioner, PTR-7230S-P Split Model Puller/Tensioner/Reconductor, and RC-2500X-P powered Reel Carrier.

The T-7212-P Bullwheel Tensioner is built with two pairs of 72 in. 5-groove bullwheels and delivers a maximum tensioning capacity of 12,000 lbs. per sub-conductor or bullwheel pair. Each bullwheel has its own planetary gearbox and hydraulic motor with spring-applied hydraulic release brake.

www.sherman-reilly.com



**WE MANUFACTURE • WE INSTALL
WE SAVE YOU MONEY**

VERSATILE SOLUTIONS FOR ALL YOUR CONSTRUCTION NEEDS



Fabric Structures
Natural Light & Low Cost Per Sq Ft

Hybrid Buildings
Benefits of Metal & Fabric Buildings

Foundation Solutions
Build Anywhere & Quick Construction

GET 0% FINANCING FOR 84 MONTHS OR GET A BIG CASH DISCOUNT

HD Electric Introduces the New PRX-4

Proximity Voltage Detector. It provides utility professionals, arborists and first responders with a safety tool that will alert them to potentially dangerous high voltage in their work areas. With 2 voltage range settings of 50V-4kV and above, the PRX-4 is an easy way to find out if voltage is present without having to make direct contact.

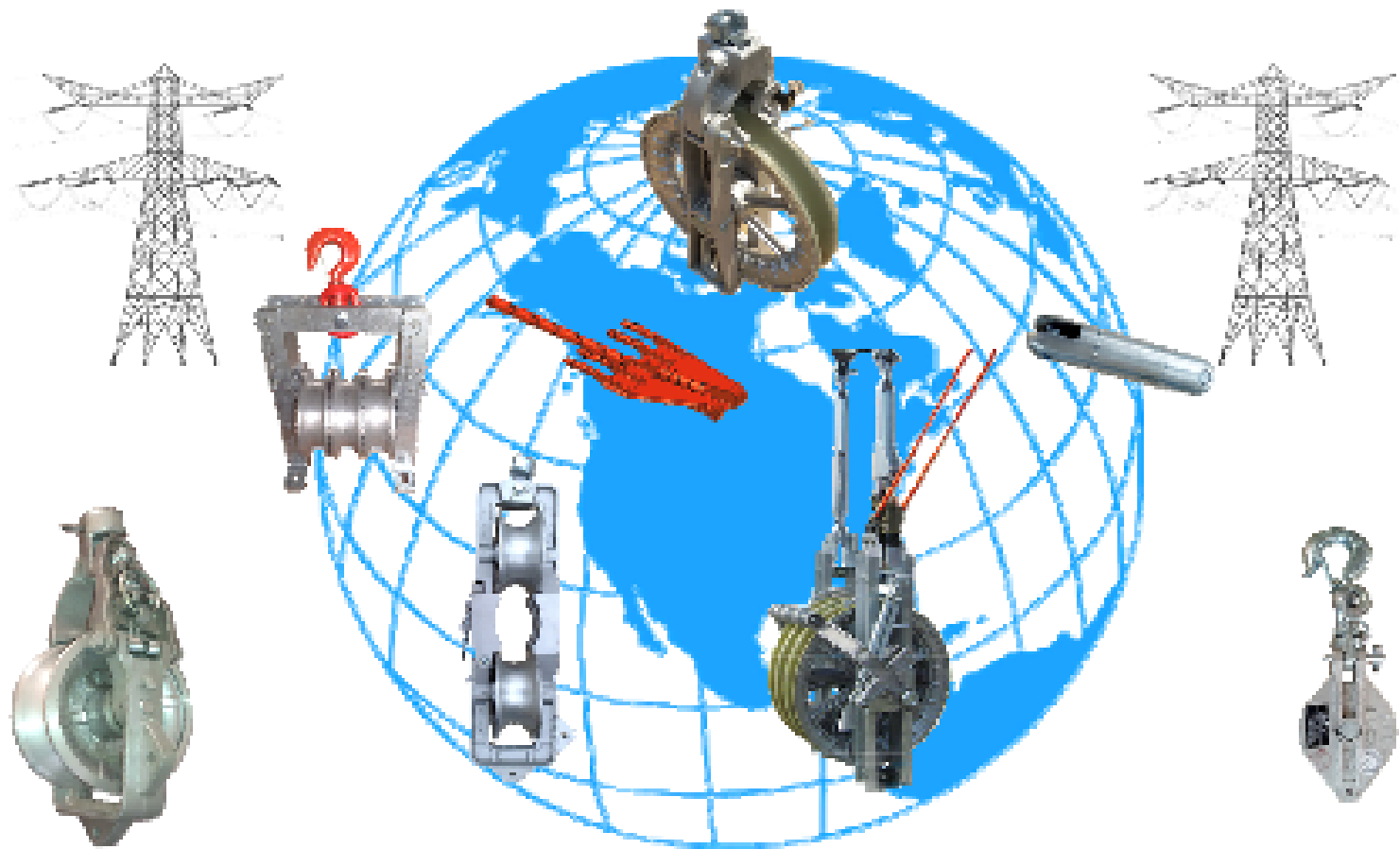
Features

- Sealed to resist water penetration in typical outdoor environments
- Voltage ranges from 50VAC to 4kVAC and above
- Detects voltages around 3" at the 50V setting,
- 10" at 4kV and above
- Rechargeable battery, quick recharge - 15 minutes for a typical full day use
- Weighs less than 1 pound
- Loud beeper and LED lights indicate voltage

PRX-4 joins the rest of the Proximity Voltage Detector family of non-contact detectors.

www.HDElectricCompany.com

WIRE THE WORLD WITH BETHEA



**Most items in our catalog are in stock except for the specialized items we can manufacture to your specifications.*

Bethea Tool and Equipment Company has over 40 years of experience as a major manufacturer and supplier of conductor installation tools and equipment for the Electric Utility Industry around the world.

*** LEASING & FINANCING AVAILABLE!**

Call, fax or email today for more information!

Bethea Tool and Equipment Company

Phone: (205) 408-9416 / (901) 476-8000

Fax: (901) 476-4811

betheatool.com | betheatool@yahoo.com



RUGGED PROTECTION

FOR YOUR FORKLIFT'S BATTERY



RUGGEDIZED SHUT DOWN TIMER

- Designed to protect your vehicle's battery from over discharge
- Programmed to automatically turn off electrical loads at a low voltage battery level, or at a preset time after the vehicle's ignition has been shut off
- No special tools required for installation
- Potbed to protect against heat, moisture and humidity
- Can be installed in a vehicle or forklift's engine compartment (12V or 24V inputs)

To learn more about how Lind's **Ruggedized Shut Down Timer** can meet your mobile power needs, contact Lind at 1.800.897.8995, via email at info@lindelectronics.com or visit us online at www.lindelectronics.com.

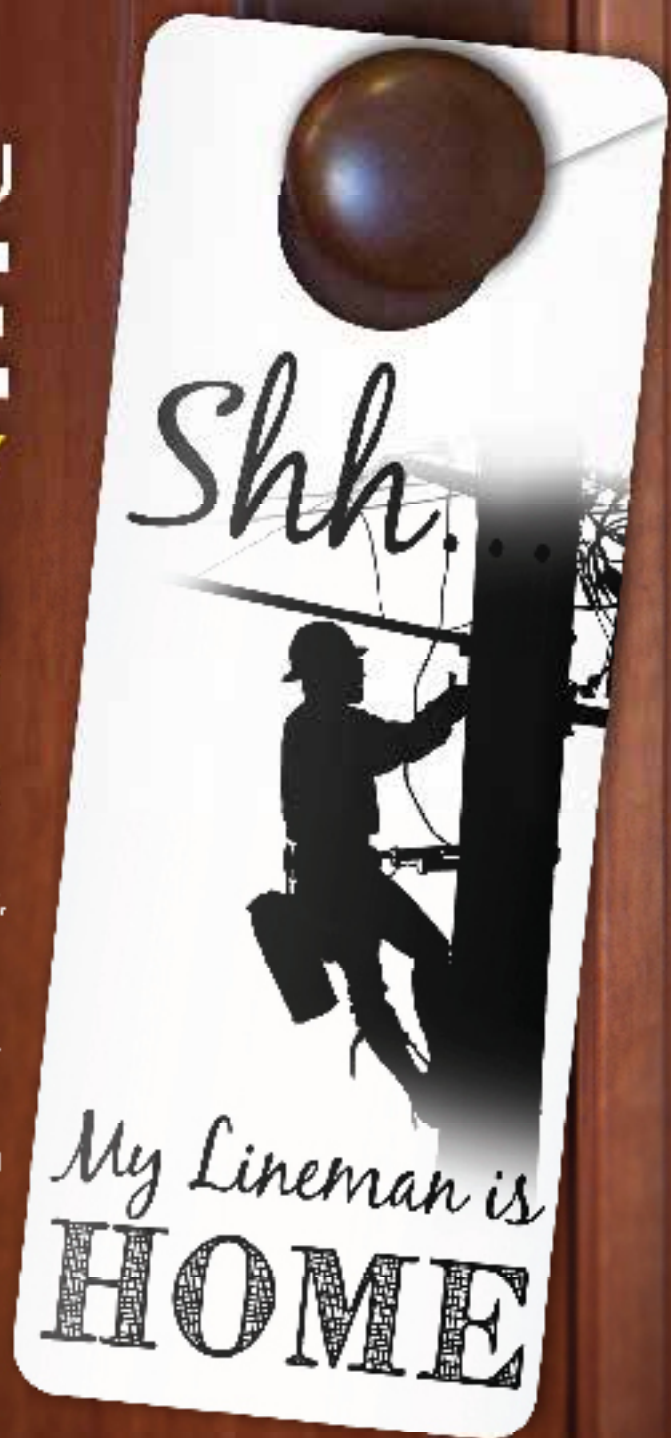


POWER SPECIALISTS FOR
MOBILE COMPUTING

GETTING YOU **HOME** **SAFELY** SINCE 1959

When it comes to safe, dependable hot line tools and equipment – we deliver.

For more than 50 years, our reputation for quality, dependability, and long-lasting products has made Hastings an industry leader in hot line tools and equipment. We're proud to say that our products have been field tested in all 50 states as well as countries around the world. When you see Hastings, expect the best – because hot line tools are our only business.



HASTINGS

A WORLDWIDE SUPPLIER OF
Hot Line Tools & Equipment

See our online catalog at:
hfgp.com • 269.945.9541

Company	Pg.	Website
Albarrie	21	www.albarrie.com
Amerex	32	www.amerex-fire.com
American Pipe & Plastics	15	www.ampipe.com
ARPI	24	www.arpiusa.com
Bethea Tool	29	www.betheatool.com
Buccaneer Rope	10	www.bucrope.com
CFA Software	14	www.cfsoftware.com
Clearspan	28	www.clearspan.com
EZ Stak	IFC	www.ezstak.com
EUFMC	18	www.eufmc.com
Geny Hitch	16	www.genyhitch.com
Golight	23	www.golight.com
Hastings Fiberglass	31	www.hfgp.com
Herculock	14	www.herculock.com
Hogg & Davis	3	www.hoggdavis.com
iToolco	27	www.itoolco.com
Krenz Vent	2	www.krenzvent.com
Lind Electronics	30	www.lindelectronics.com
Line Ward	16	www.lineward.com
MSA Safety	9	www.msasafety.com
Miller Safety Systems	11	www.millersafetyltd.com
Morooka	6	www.morookacarriers.com
Nesco	BC	www.nescorentals.com
Palfinger	5	www.palfinger.com
Pelsue	25	www.pelsue.com
Power Gripz	17	www.thepowergripz.com
Rayco	26	www.rayco.com
Time Versalift	7	www.versalift.com
TSE	IBC	www.tse-international.com
Venco Venturo	1	www.vencturo.com
Xplore Technologies	19	www.xploretech.com



Amerex Corporation
P.O. Box 81 • Trussville, AL 35173
Ph: (205) 666-3271 • Fax: 800-864-9980
email: sales@amerex-fire.com
www.amerex-fire.com

"Quality is Behind the Diamond"




ISO 9001 & 14001
OHSAS 18001
CERTIFIED

EXTINGUISHERS AND FIRE SYSTEMS

INDUSTRIAL • RESTAURANT • MINING • UTILITY • FACILITY
WASTE MANAGEMENT • FORESTRY • AGRICULTURE
SERVER ROOM • TELECOMMUNICATION • AIRCRAFT
AIRPORT • CONSTRUCTION • OFF-SHORE PLATFORM
REFINERY • TRANSIT BUS • MANUFACTURING
VESSEL • MILITARY VEHICLE...MORE!



Designed and Assembled in the USA!

Designed to meet your underground cable pulling needs



**UP-120-80HJ
Underground Puller**



**UP-70-16D
Underground Puller**



**UP-85-8D
Underground Puller**



S660 Sewer Rodder



CP3800 Articulated Boom Puller

NESCO

SUPERIOR

**CUSTOMER
SERVICE**

RESPONSIVENESS AND SUPPORT SECOND TO NONE

NESCO Rentals® isn't just a premier provider of utility rental equipment, but a leader in responsiveness and support for all customers. Dedicated rental and service teams, combined with one of the industry's largest rental fleets, ensure NESCO meets your job site needs. Call us now to experience our superior customer service.



Visit our website, build a quote, outfit your vehicles and get to work.

(800) 252-0043 | www.nescorentals.com

