

THE
UTILITYSOURCE

April 2016

Products and Services for Today's Electric, Telecom, and CATV Utilities

Isuzu Unveils All-New Class 6 F-Series Truck

Kenworth T880 Adds Hendrickson
ULTIMAAX Severe Duty Suspension
at NTEA Work Truck Show



Legacy of Success

Time Versalift

NEW FOR 2016



Venturo Van Crane

With the increased demand of work vans in the industry, Venco Venturo has developed a *small crane* application that will increase productivity at any job site. Designed for use within the rear cargo area, the new van crane from Venturo will retain the rugged designs that have set the standard of our cranes for generations.

To learn more, visit www.venturo.com.



TRUCK-MOUNTED CRANES, CRANE BODIES & HOISTS



VENCO VENTURO INDUSTRIES LLC

12110 BEST PLACE | CINCINNATI, OHIO 45241

800-226-2238 | info@venturo.com | www.venturo.com



PowerBully

Track Carriers

PowerBully track carriers.

Strong and rugged for challenging tasks.



PowerBully offers the perfect mobile base for digger derricks, cranes, man lifts, bucket booms and dump bodies.

- Versatility of application
- Fully rugged for challenging tasks
- Payload capacities of up to 35,000 lbs
- Sensitive to the environment
- Low ground pressure
- Small footprint on the ground

BLUEIQ

PowerBully.com

www.powerbully.com

PG 4	Industry News
PG 8	Company Profile: Ring Power Utility Equipment Lands Spiradrill Distribution Deal
PG 12	Isuzu Unveils All- New Class 6 F-Series Truck
PG 18	Kenworth T880 Adds Hendrickson ULTIMAAX Severe Duty Suspension at NTEA Work Truck Show
PG 24	Company Profile: Legacy of Success-Time Versalift
PG 28	New Product News
PG 36	Ad Index

ASSOCIATE GROUP PUBLISHER	Rick Harless 205-624-3794 rick@handfmedia.net
EDITOR	Annie McGilvray annie@handfmedia.net
CREATIVE/WEB DIRECTOR	Jacklyn Greenhill jacklyn@handfmedia.net
ADMINISTRATIVE DIRECTOR	Steven Hobson steven@handfmedia.net

CEO
Christy Hobson

PRESIDENT
Glen Hobson



Executive and Advertising Offices

PO Box 1568
Pelham, AL 35124

phone: 205-441-5591 fax: 205-624-3354

www.theutilitysource.net
glen@handfmedia.net

The Utility Source™ is published twelve times a year on a monthly basis by H&F Media Group, Inc. The Utility Source™ is distributed free to qualified subscribers. Non-qualified subscription rates are \$57.00 per year in the U.S. and Canada and \$84.00 per year for foreign subscribers (surface mail). U.S. Postage paid at Birmingham, Alabama and additional mailing offices.

The Utility Source™ is distributed to Power, Telcom and CATV Utilities and Utility Contractors throughout the USA. Publisher is not liable for all content (including editorial and illustrations provided by advertisers) of advertisements published and does not accept responsibility for any claims made against the publisher. It is the advertiser's or agency's responsibility to obtain appropriate releases on any item or individuals pictured in an advertisement. Reproduction of this magazine in whole or in part is prohibited without prior written permission from the publisher.

POSTMASTER: Send address changes to
H&F Media Group, Inc., P.O. Box 1568
Pelham, AL 35124
PRINTED IN THE USA

Get Cool!



Extend transformer life!

Increase transformer capacity up to 166%!

- expert technical assistance
- low sound levels
- energy-efficient motors
- large inventory
- one-piece cast aluminum blades
- galvanized or stainless steel guards



quality engineered, performance tested

Rugged Dependability

STANDARD IN EVERY MACHINE WE BUILD!

*Hogg & Davis has been proudly
manufacturing utility line equipment
for more than half a century.*



*Our trusted products are part
of the fleets and tool cribs of
nearly every investor-owned
power and communications
company in the United States
and beyond.*



HOGG & DAVIS, INC.

3800 EAGLE LOOP • OREGON, OR 97044

TEL 541.354.1001 • FAX 541.354.1080

WWW.HOGGDAVIS.COM

HD

HOGG & DAVIS, Inc.

Altec Inc. Wins The Work Truck Show® 2016 Green Award

Altec Inc. (Birmingham, Alabama) won The Work Truck Show® 2016 Green Award for its JEMS® 4 Series (Jobsite Energy Management System) hybrid-electric system. The award was presented at The Work Truck Show 2016, which was held March 1–4 at the Indiana Convention Center in Indianapolis, Indiana.

The Green Award recognizes the product at the Show that best improves work truck fuel utilization, as determined by a panel of trade media editors and truck fleet managers.

Altec JEMS 4 Series is an updated energy management system for utility work trucks. This integrated plug-in uses stored electrical energy to power the aerial device, tools, accessories, exportable power, and engine-off cabin heating and cooling. It features lithium-ion energy and an on-demand electrified PTO (ePTO) for hydraulic power. This allows bucket units to operate quietly without the truck engine running, which is an advantage in urban areas.

The compact system is equipped with Altec's Idle Mitigation System that eliminates unnecessary idle time when the vehicle is parked, automatically transitioning from engine power to JEMS power. This reduces fuel consumption while minimizing emissions and engine maintenance, according to the company.

www.altec.com

Ditch Witch Recognized as 2015 Lawn & Garden Vendor of the Year

Ditch Witch®, a Charles Machine Works Company, was recognized by the True Value Company as their 2015 Lawn and Garden Vendor of the Year at the American Rental Association's The Rental Show in Atlanta.



Awarded annually, the Lawn and Garden Vendor of the Year demonstrates outstanding contributions, dedication to quality, and a positive impact on True Value members and rental customers. The award highlights the company's continued innovations within the trencher and compact equipment market, and position as a rental-industry leader. "We are honored to be selected as a True Value Lawn and Garden Vendor of the Year," said Shan Kirtley, Ditch Witch Vice President of Sales and Marketing. "At Ditch Witch, we continually strive to provide our rental partners and customers with outstanding service and support worldwide. To be recognized for our contributions to the rental industry is a remarkable achievement."

www.ditchwitch.com

Elk River
 Personal Fall Protection
 P.O. Box 1770
 Cullman, AL 35056-1770

800.633.3954

www.elkriver.com

MADE IN USA

Deeper. Faster. Stronger.



Spiradrill hydraulic drilling rigs simply out perform the competition. With models reaching as deep as 100 feet and hole diameters up to 12 feet, Spiradrills bury other rigs. Efficient designs minimize setup time and truck-mounted rigs arrive on-site, ready to dig in. Ring Power offers the Spiradrill family on crawlers or trucks, with low clearance and EZ Trac options available.

Ring Power Utility Equipment has Spiradrills available today.



Nationwide Rental and Sales through



Utility.RingPower.com

WE HAVE THE ROPE TO GET THE JOB DONE.



800-358-767

www.bucrope.com

TUS INDUSTRY NEWS

The Green Truck Association Donates Light-weight & Advanced Technology Demo Truck to Habitat for Humanity & ReStore

The Green Truck Association (GTA), an NTEA affiliate division, and its Lightweight Materials Technology Council facilitated donation of the Lightweight and Advanced Technology Demo Truck to Habitat for Humanity and ReStore. The demo truck, displayed at The Work Truck Show 2016, showcases fuel-saving components and technology. While at the Show, attendees can see firsthand how current product and equipment offerings can help reduce fuel utilization and improve vehicle productivity.

"We are pleased to feature the demo truck as a tangible example of GTA and Lightweight Materials Technology Council objectives and welcome the opportunity to facilitate this donation to Habitat for Humanity and ReStore," said Doyle Sumrall, GTA managing director. "This generous contribution provides an opportunity to support a worthy cause and highlight advanced technologies in the process."

The Lightweight and Advanced Technology Demo Truck display consists of an Isuzu NRR diesel Class 5 truck upfitted with lightweight components. The truck itself weighs 760 pounds less than a conventional cab and is equipped with a driver feedback reporting system, speed limiting and idle shutdown to maximize fuel efficiency.

www.greentruckassociation.com

Weather Resistant Solid Brass Padlocks

Made to your specifications in the U.S.A.



HERCULOCK

Hercules Industries, U.S.A.

HERCULES INDUSTRIES, INC.

Manufacturer of HERCULOCK Padlocks

P.O. Box 197 • Prospect, Ohio 43342

Toll Free: 1-800-345-2590

Fax: (740) 494-2274

www.HERCULOCK.com



Shawmut Equipment

Serving the Equipment Industry Since 1957

(508) 238 - 1900

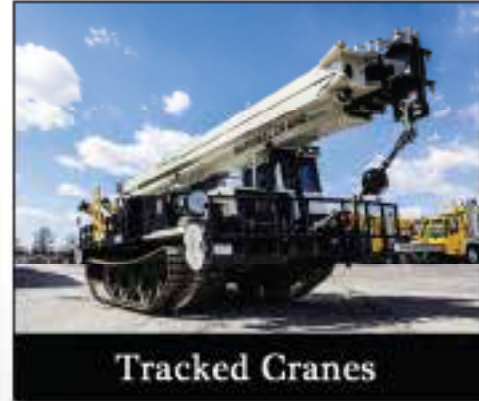
SALES ● RENTALS ● PARTS ● SERVICE



Tracked Buckets



Tracked Digger Derricks



Tracked Cranes



Tele-Boom Crawler Cranes



Boom Trucks



Industrial Cranes



Rough Terrain Cranes



Rubber Track Carriers

Shawmut Offers:

- Superior Customer Service
- Three Full Service Facilities
- Factory Trained Technicians
- 24 - Hour On Site Service
- Latest Diagnostic Equipment
- Extensive Parts Inventory

CONNECTICUT

20 Tolland Turnpike
Manchester, CT 06042
Toll Free: (800) 829-4161
Office: (860) 643-4161

MASSACHUSETTS

136 Eastman Street
South Easton, MA 02375
Toll Free: (877) 526-9213
Office: (508) 238-1900

NEW BRUNSWICK

327 King William Road
Saint John, NB E2M 7C9
Toll Free: (888) 594-8444
Office: (506) 635-1550

www.shawmutequipment.com

Ring Power Utility Equipment



Ring Power Utility Equipment has recently added Spiradrill Equipment to their portfolio of brands. The company also represents Terex Utilities, Manitowoc Cranes (including Grove and National Crane lines) Tadano Mantis, Prinoth, Manitex, Skylift, Vac-Con, Allmand, Genie, and Brooks Brothers Trailers.

Lands Spiradrill Distribution Deal

Ring Power Utility Equipment and Spiradrill have teamed up to bring Spiradrill's full line of drilling equipment and tools to Ring Power's portfolio.

Ring Power will sell and rent Spiradrill machines and tools nationwide via their sales and rental programs alongside other specialized equipment from Terex Utilities, Manitowoc Cranes, Tadano Mantis, Prinoth, Manitex and others.

Spiradrill, based in Smithville, Texas, has been manufacturing drill rigs and related tools, attachments and other equipment since 1982.

The company was founded by Jerry Wilkinson, who was convinced that drilling equipment could be more efficient, reliable and affordable – if it were just designed and built better.

"Working with Spiradrill we immediately saw many similarities between their company and Ring Power," said Mike Beauregard, sales manager for Ring Power Utility Equipment. "From their roots as a family business, their commitment to excellent customer service and their drive to offer innovative and dependable solutions -- their story parallels the Ring Power story so closely that there was an instant familiarity the moment we started discussions."

"We feel like this is an 'everyone wins' situation; Ring Power is dedicated to getting our products into more customers' fleets, we're

able to focus on the production and development of more great products," said Scott McNeill, sales manager for Spiradrill. "And the customer benefits from having both Spiradrill and Ring Power invested in their success."



Spiradrill designs and builds hydraulic drilling rigs (truck-mounted and crawler-based units) and drilling attachments for hydraulic excavators. All are available with their lineup of custom-built dirt and rock augers or core barrel tools. Spiradrill equipment typically outdrills (depth, diameter) and offers more torque than competing products.

"We're really excited to have Spiradrill in our lineup," said Beauregard. "I know our customers will be just as excited when they see what these units can do."

Ring Power Utility Equipment is a business unit of St. Augustine, Florida-based Ring Power Corporation. The company has more than 50 years' experience providing products and services to the construction equipment and power systems industries. Ring Power is comprised of eight divisions ranging from a Cat equipment dealership serving most of Florida, to a specialized division that provides portable power options for entertainment venues and events worldwide.



PELSUE®

TRADITION + INNOVATION

Vehicle Upfitting and Custom Trailers



Truck Chassis



Cargo Vans



High-Roof Vans



Fiberlite XL Trailer



Fiberlite POD Trailer



Aluminum storage equipment for Walk-in Vans,
Service Bodies, Pickup Trucks and SUV's



MAXIMUM EFFICIENCY
ENHANCED ORGANIZATION

EZ STAK 550 Albion Ave. Schaumburg, IL 60193
630.994.3300 www.EZSTAK.com

Isuzu Unveils All-New Class 6 F-Series Truck



Isuzu Commercial Truck of America, Inc. distributor of America's best-selling low cab forward trucks, unveiled an all-new entry in the Class 6 medium-duty truck segment—the 2018 Isuzu FTR. The company made the announcement today at the National Truck Equipment Association's 2016 Work Truck Show in Indianapolis.

The F-Series truck is slated to go into production in the United States in mid-2017.

"This truck represents our vision of the future of the medium-duty truck industry," said Shaun Skinner, executive vice president and general manager of Isuzu Commercial Truck of America. "As the adult population grows and as people move to urban centers, there will be an increasing need for delivery trucks that can carry a lot of cargo but at the same time be fuel efficient, maneuverable, environmentally friendly, and that offer a low cost of ownership. The all-new FTR achieves all of these goals."

Powertrain

The FTR will be powered by Isuzu's renowned 4HK1-TC 5.2-liter turbocharged four-cylinder diesel engine—a first in the segment. "As fuel economy and emissions regulations become stricter, you're going to see more and more competitors in this class turning to four-cylinder engines," Skinner said. "Isuzu is a pioneer in developing and building four-cylinder transportation solutions."

Isuzu's Newest Family Member

ISUZU FTR

The #1 Selling LCF Truck in America Since 1986
The Isuzu Family of Class 3 through 6 Trucks

Class 6 Truck • Body Lengths 40 to 20ft

THE ISUZU FTR
Class 6 Low Cab Forward

F-SERIES

The SorbWeb™ Plus

Solution

OIL REACTIVE FABRIC

A Better Solution

Engineered Secondary Oil Containment System allows water to pass through but seals on contact with oil.

- Robust engineered solution
- Our Oilmat has the highest polymer loading in the industry with a minimum 2500 g/m² or 73.7 oz/yd²
- Installations follow a rigorous quality control protocol to ensure the containment is properly installed
- Designed to allow for vehicle access up to a max of 26,000 Kg/group of axle



1.866.269.8275 x 0235 | www.albarrie.com

Although horsepower and torque ratings have not been finalized, the company noted that the 4HK1 engine is well known for its high torque output. The powerplant will be mated to an Allison 2000 Series automatic transmission. The engine carries a B10 durability of 310,000 miles—meaning that 90% of engines should reach that mileage before requiring an overhaul.

An incredible cruising distance can be achieved by the FTR, thanks not only to the truck's miserly use of fuel but also its available aluminum 50 or 100 gallon fuel tank.

Flexibility and Capability

Eight wheelbase configurations will accommodate bodies from 16 feet to 30 feet, allowing for a wide variety of body applications.

The all-new cab features a clean back-of-cab design that can provide more space for body applications compared to the previous F-Series truck.

Like all Isuzu trucks, the FTR will feature a low-cab-forward design that increases visibility and markedly improves maneuverability—especially important in the crowded city centers where the FTR is expected to be in greatest demand. "With a 50-degree wheel cut, there's not a truck in this class with a tighter turning radius," Skinner said.

Interior Design

The FTR cab's wide step and wide-opening doors allow easy entry to the spacious interior, which features three-across seating and extra space for storage behind the seats.

Additional interior amenities include a side under safety mirror, overhead console, and a suspension driver's seat with armrest specially designed to increase comfort and reduce driver fatigue.

Additional Details

Pricing, available configurations, power ratings and additional features and specifications will be released in mid-2017.

"The overall concept of the FTR is to bring to our customers the next generation medium-duty low-cab-forward truck, one that features a clean, durable, highly efficient four-cylinder engine and is the best Class 6 choice for pickup and delivery in cities," Skinner said. "The letters 'FTR' don't stand for 'future,' but this truck represents the future, and it will be here—soon."

www.isuzucv.com

Voted by Contractors As The Best Pulling Tools 2014

iTOOLCO



Made in the USA

Crank Lift and Bearing Spin
Real Jacks RJ6K

iTOOLCO

Huge Time Savings

PULLSLICK

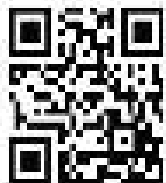


Fastest When Pulled With the Cannon 10K

Cannon 10K Dual Capstan 4 Speed 10K Tugger "Easy, Strong, & Fast"

iTOOLCO

Demo Today



9 to 40 Fpm
Made in the USA

iToolco.com
865-670-3713

Shoo-pin™

Flex-Cable Adapters

PT-FX Series adapters are designed to terminate high-strand flex-cable (locomotive, mining, welding) to machinery, panels, and transformers. The pins fit mechanical set-screw type connectors and are sized for the current carrying capacity of the cable. These adapters feature the Greaves flared Shoo-in™ barrel-opening design for easy cable insertion. Insulating covers are provided.

Wherever flex-cable terminates in a set-screw lug:

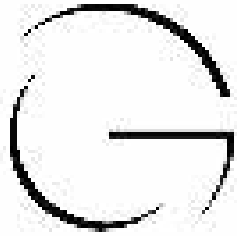
- Telecommunications
- Construction Sites
- Drilling Platforms
- Theme Parks
- Locomotive
- Welding
- Marine
- Mining



GREAVES

www.greaves-usa.com

800-243-1130



GOLIGHT

Revolutionary Lighting Solutions



Durable... Versatile... Powerful... GUARANTEED



When the job gets tough, our men need reliable illumination to show them their way and march through elements to get their critical work done. More often than not, that means battling wind, rain, snow and ice and doing so in the dark. In those conditions, light that can be dramatically directed where it is needed, when it is needed is an essential tool for safety and productivity. In both emergency situations and day-to-day operations, Golight has proven to be a vital tool in extending work hours and increasing productivity. Golight has been a partner to the men and women who keep our lights on for almost 20 years and we are committed to seeing that relationship grow and develop.



KOOLERS... BANDANNAS... DECALS . Send an email to media@golight.com and let us know you saw our ad in "THE UTILITIES SOURCE" and we will send you some Linean branded merchandise.



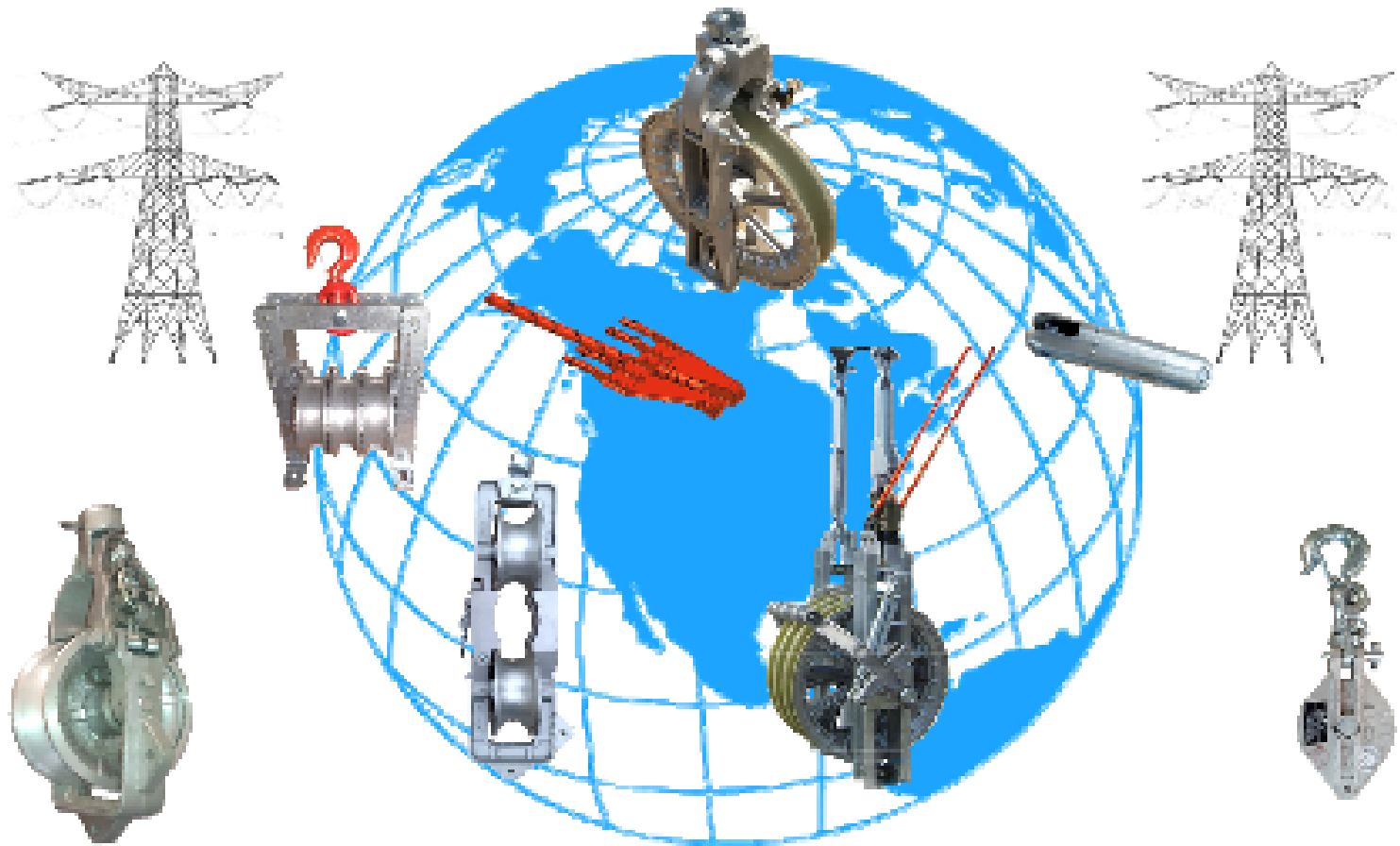
Kenworth T880 Adds Hendrickson ULTIMAAX Severe Duty Suspension at NTEA Work Truck Show

The vocational flagship Kenworth T880 is now available for order with the Hendrickson ULTIMAAX(R) advanced severe-duty rubber suspension, Kenworth announced today at the NTEA Work Truck Show.

The ULTIMAAX suspension offers a balance of empty ride quality and loaded stability for driver comfort, while also cushioning the load and protecting the chassis, cargo and body equipment from excessive vibration and road shock due to potholes and rugged terrain. For the T880, the suspension is available with axle ratings from 46,000 to 52,000 pounds, axle spacings of 54- and 60-inches with 11-inch ride height for applications such as refuse, sand and gravel, crane/boom, platform, construction, and logging.

"Fleets that operate trucks up to 52,000-pound capacities can now specify the Hendrickson ULTIMAAX severe-duty suspension with the Kenworth T880 to provide their drivers with a consistently smooth ride while running loaded or empty on the harshest roads and terrains," said Kurt Swihart, Kenworth marketing director. "The Kenworth T880 equipped with a PACCAR MX-13 engine rated up to 500-hp and 1,850 lb.-ft. of torque already provides a durable, reliable and productive vocational truck for such demanding applications. The severe-duty suspension helps enhance the T880's traction, stability and handling under loads from 46,000 to 52,000 pounds. Plus, it adds even more durability and helps customers maintain a lower cost of operation with its components designed for maximum weight savings for additional payload."

WIRE THE WORLD WITH BETHEA



**Most items in our catalog are in stock except for the specialized items we can manufacture to your specifications.*

Bethea Tool and Equipment Company has over 40 years of experience as a major manufacturer and supplier of conductor installation tools and equipment for the Electric Utility Industry around the world.



*** LEASING & FINANCING AVAILABLE!**

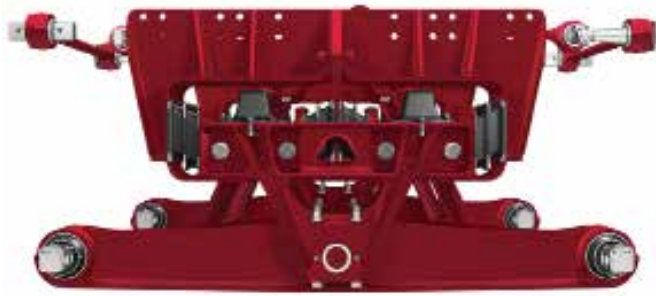
Call, fax or email today for more information!

Bethea Tool and Equipment Company

Phone: (205) 408-9416 / (901) 476-8000

Fax: (901) 476-4811

betheatool.com | betheatool@yahoo.com




The suspension features bar pin end bushings, a progressive load spring design, and a rugged axle connection to extend its service life. The progressive load spring design also makes replacement easier and the rugged axle connection can reduce re-bush time. Rubber shear springs carry a majority of vertical load in the empty condition, creating a smoother ride. As the load increases, the suspension's ride and stability characteristics change to meet the application's needs without an abrupt change in spring load.

"The rubber shear springs also contribute to longer service life for the T880 and the body equipment," Swihart said.

Integrated with the rate spring design and rugged axle connection is Hendrickson's proven walking (equalizing) beam technology, which utilizes a central pivot point to help keep tire contact with the road or worksite surface, maintaining traction. Its flat-bottom design increases ground clearance, plus it delivers up to 17.5 inches of diagonal wheel



CAN ONE HITCH TAKE CARE OF ALL YOUR TOWING NEEDS?



TOWING MADE EASY

Available in Class IV & V with 10K, 16K & 21K lb. weight capacities. Safely and efficiently move any trailer without having to swap out hitches.

GEN-Y HITCH
BY GENY INDUSTRIES

574-218-6363 www.GenyHitch.com Made in the USA

articulation to keep the load on all drive wheels.

Available in day cab, 40-inch, 52-inch and 76-inch sleeper configurations, the Kenworth T880 comes standard with the PACCAR MX-13 engine rated up to 500-hp and 1,850 lb-ft of torque. The PACCAR MX-13 provides a lightweight, fuel-efficient engine for vocational applications, including dumps and heavy haul applications over 100,000 pounds. The T880 can be ordered with a 116.5-inch BBC hood optimized for the PACCAR MX-13 engine and providing enhanced visibility, or with the standard 122.5-inch BBC hood.

“By equipping the Kenworth T880 with the ULTIMAAX severe-duty suspension, customers can greatly enhance the driver-friendly T880, making it an even more productive work environment, ultimately resulting in the attraction and retention of good drivers,” Swihart said.

www.kenworth.com



Knowledge is Your Competitive Edge

...one of comprehensive and digital learning resources are available in print, as well as seasoned professionals. These industry-leading materials cover such topics as basic principles, industry standards, and the latest industrial processes and technologies.

...materials are available in all work environments.

ATP TECHNICAL PUBLICATIONS
www.atp.com

Protect yourself from "Arc Flash"



ARC FLASH HOOD WITH V¹² HIGH-VOLUME VENTILATOR Compact. Powerful. Reliable

Our V¹² High-Volume Ventilator boasts an unexpectedly quiet, high output (35+ CFM) turbine fan to cool and circulate the ambient air within the hood. Fully protected beneath it's durable ABS shell and added fabric layering, the V¹² High-Volume Ventilator isn't just compliant, it's superior.



40 CAL/CM2 ULTRALIGHT CLOTHING BY OTEX

Our new dual-layer Ultralight clothing takes advantage of DuPont's® dedication to scientific advancement and Westex's® industry leading dependability. Weighing in 37% lighter than traditional HRC4 PPE, our Ultralight Clothing is the most innovative contender in the lightweight arena.

HYBRID LAYERING

Combined Fabric Weight: 14 oz

Outer Layer: DuPont® Protera
Color: Navy

Inner Layer: Westex Ultrasoft
Color: Safety Orange

FOR FREE INFO, CIRCLE 20 ON READER SERVICE CARD

CALL US TODAY

(703) 367-0404

OR VISIT OUR ONLINE ELECTRICAL SAFETY EQUIPMENT STORE

www.millersafetyltd.com



SMART MOBILITY

POWER YOUR WORKFORCE



WITH **XPLORE** RUGGED TABLET TECHNOLOGY

Xplore® is the #1 provider of rugged tablets to the Utility market.* With nearly two decades of experience delivering purpose-built mobile tablet solutions, Xplore understands the unique demands of the utility industry's work environments. Mobile workers can experience full computing capabilities from the office, to the vehicle and into the field without interruption. Equipped with a full suite of accessories, integrated features and in-vehicle solutions, Xplore rugged tablets help deliver excellent customer service to the end user by improving productivity and enabling real-time decision making at the point of service with features including:



Real-time Data
Transmission



Long Battery
Life



Sunlight-Readable
Display



Light Weight

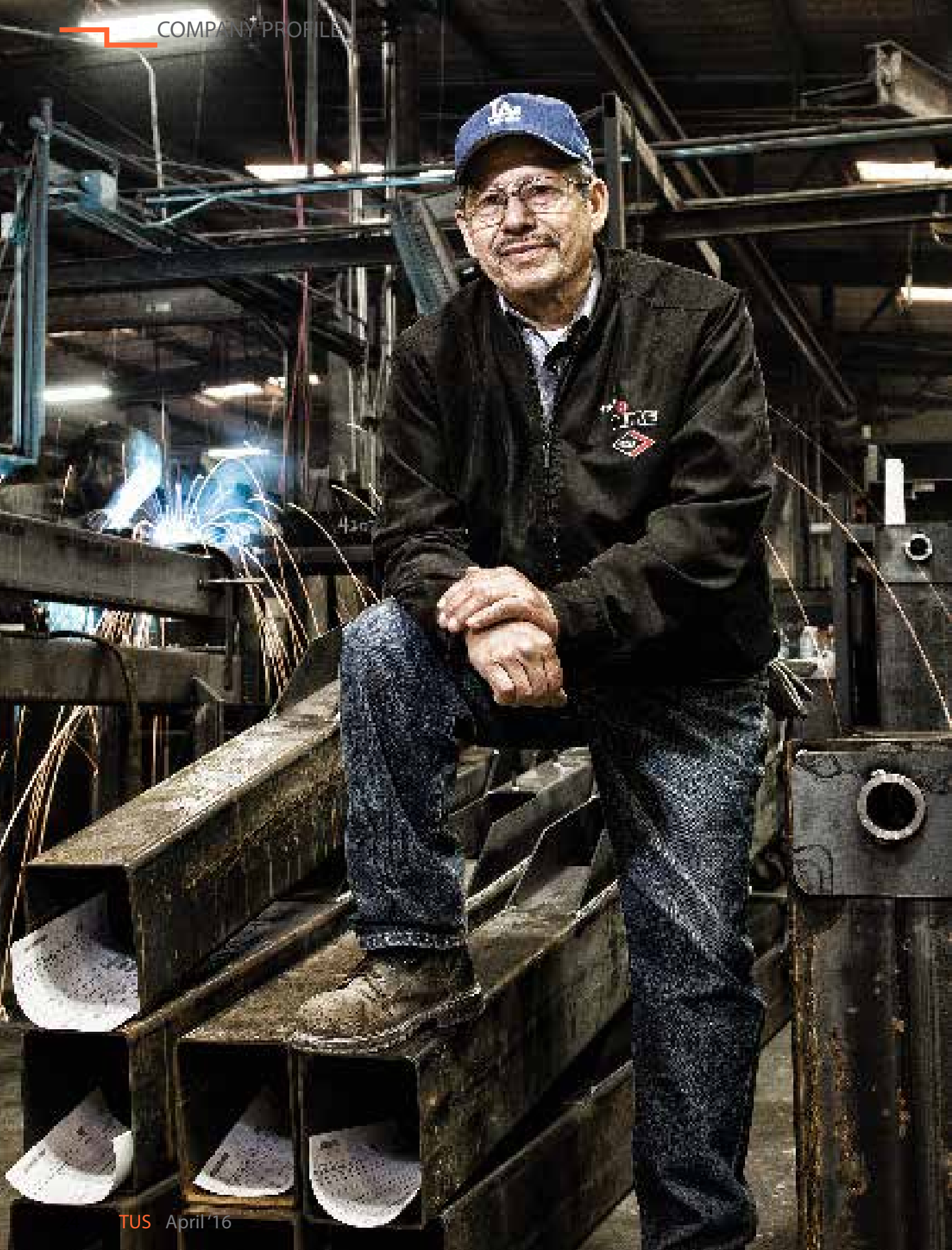


Many Integrated
Options

DISTRIBUTECH
CONFERENCE & EXHIBITION
FOCUSED ON THE FUTURE

Visit Xplore in booth 955 at DistribuTECH to see how our rugged mobile computing solutions can work for you and register to win an XSLATE B10.

www.xplorettech.com/distributtech | www.motioncomputing.com | Call: 1-866-682-2538



Legacy of Success

Humble Beginnings

In the mid '60s the telecommunications industry was rapidly expanding. Most homes were equipped with telephones and although cable television was in its infancy, interest in this new media platform was growing. As these two technologies developed at an unprecedented rate, local telephone and fledgling cable companies searched for ways to increase their efficiency while providing a safe working environment for their employees.

In 1965 linemen were required to climb poles which was dangerous and physically demanding, particularly to the older employees. Developed in the small Central Texas town of Clifton, Texas by Russell Howard, a mechanical engineer, and Charles Turner, whose family owned an independent telephone company in Palo Pinto County, Texas, TIME MANUFACTURING COMPANY was 'born out of the need' to provide 'Time Saving Equipment' that was maneuverable, safe and a dependable way for telephone linemen to perform tasks at varying heights above ground. The current Waco, Texas location, home to Time Manufacturing, was built in 1972. Today, with two state-of-the-art manufacturing facilities and over 300,000 square feet under one roof, Time is one of the leading premier facilities of its kind.

Aerial lift orders rapidly increased with VERSALIFT's first large sale of multiple units to a Michigan-based telephone company. In the late 70s, the company's customer base stretched globally as we introduced our product to the European market. Product lines, sales, and customer relationships continued to grow, and in 1985, Time Export was established in Farso, Denmark. In the 90s and 2000s, we made international strides with the establishment of VERSALIFT distributor locations in Europe, Africa, Middle and the Far East. Here in the U.S., we were

expanding as well with the addition of VERSALIFT East in Bethlehem, PA., VERSALIFT Southwest in Waco, TX., and VERSALIFT Northwest in Salem, OR.

Although Time Manufacturing is one of the foremost aerial lift manufacturers in the world, throughout the years we've not veered far from our modest, ambitious beginnings. We've grown in both employees and global reach, yet our belief is still the same as our founders: Solutions to your aerial lift needs should always be within the customer's reach.

Although Time Manufacturing is one of the foremost aerial lift manufacturers in the world, throughout the years we've not veered far from our modest, ambitious beginnings. We've grown in both employees and global reach, yet our belief is still the same as our founders: Solutions to your aerial lift needs should always be within the customer's reach.

History of Innovation

How do we keep your needs in mind while offering cutting-edge solutions? VERSALIFT innovations, such as the introduction of our patented TruGuard technology and incorporating the use of high-strength steel, were created with the success of your challenges in mind while pushing the limits of telescopic heights safety. Since the creation of our first aerial lift, Time Manufacturing has been committed to using the key components of technological innovation and customer feedback as a means to meeting customers' aerial lift needs. Even today, cofounder Russell Howard's dedication to his trade continues to inspire both our talented engineering department and experienced manufacturing personnel.

Each of Time Manufacturing's engineers begins their time at VERSALIFT learning the products by working side by side manufacturing. Once they understand the structural mechanics of our products from start to finish, their attention turns

to you. We dedicate time listening to customers explain their lift challenges in the field in order to design equipment specific to your needs. Collaboration with our customers while we build and test the new equipment also helps to ensure that your, as well as industry, safety needs are met while maintaining a standard level of productivity. Utilizing the exceptional skill base of our knowledgeable employees, our mission is to build VERSALIFT products designed to provide you with safe solutions and increase over customer satisfaction.

Future of Versalift

We're excited about what lies ahead for Time Manufacturing and our VERSALIFT product. Using our global manufacturing resources teamed with highly trained employees, the heights for the future are limitless. Time Manufacturing Company's stable ownership, consistent style of management and full production schedule also empower our plans for tomorrow.

Because we keep the customer in mind when planning for the future, VERSALIFT continues to extend fresh product offerings to our customer base, whether by implementing a rental and leasing fleet or cultivating our used equipment business. Though the VERSALIFT presence in our current industries is vast, we continue to look toward what's next, such as aerial lift needs in the emerging wind energy industry. New entry points for lifts in utility processes are also a priority, such as distribution, transmission, contracting, and more.

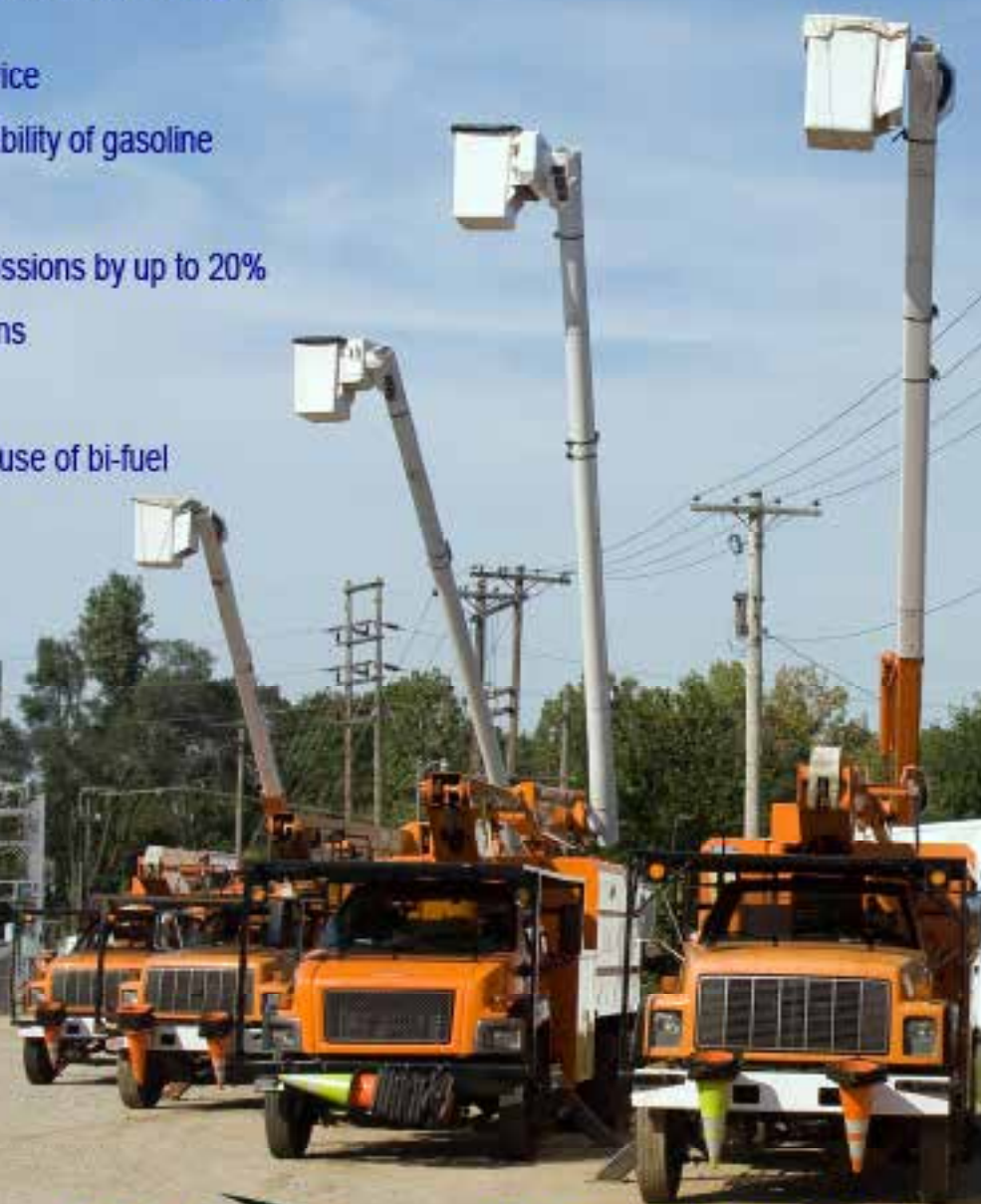
Look to VERSALIFT to be YOUR all-inclusive lift resource, where you can rent, buy, replace, and resell your lift or fleet of lifts with ease.

We're excited for the future of VERSALIFT. With our experience in growth, invaluable resources, and commitment to customer satisfaction, there's really only one way to go. And that's up!

Go Green and Dramatically Reduce Fuel Cost!

The patented ICOM JTG II Liquid Propane System
is innovative and offers these advantages:

- Nationwide Installation & Service
- Equal power, torque and drivability of gasoline
- Cold climate reliability
- Reduces greenhouse gas emissions by up to 20%
- Dramatically reduced emissions
- Virtually no particulates
- Fuel range extended with the use of bi-fuel
- Extended service intervals



**Precision Sales
& Service**
877-403-7827
www.alternatefuel.com

ICOM's Propane Optimization Program[®] (POP) eliminates driver input to maximize propane usage



ICOM NORTH AMERICA
Alternative Fuel Systems



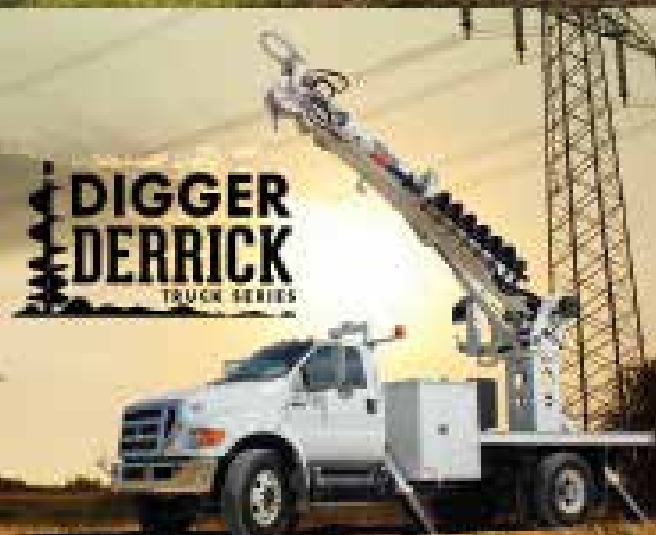
EUFMC SHOWCASE

The world leader in aerial lift production for over 30 years, Versalift is dedicated to developing innovative solutions that meet the ever-changing needs of aerial industries. Last year, we introduced the cutting-edge Phoenix 180-1 and Skybird 215-1 transmission lifts to our already impressive fleet. The 907-7100-HD and Digger Derrick T & B series add to the diverse capabilities that Time Manufacturing has always been known for.

VERSALIFT
 **PHX**



VERSALIFT
7100HD



Cree Introduces High-Power XLamp XP-L & XP-G2 LEDs

Cree, Inc. continues to innovate to deliver industry-best performance in its high-power XLamp® XP-L and XP-G2 LEDs. By leveraging key elements of Cree's SC5 Technology™ Platform, the XP-L and XP-G2 LEDs now provide up to nine percent more lumens and lumens-per-watt (LPW) than previously available. These enhancements allow lighting manufacturers to quickly increase performance for existing designs without any additional investment or requalification.

"We originally selected the XP-G2 LED for our street lighting products because of its high performance and proven reliability," said Dante Cariboni, CEO, Fivex SpA (Cariboni Group). "The brighter and more efficient XP-G2 LED announced today will allow us to improve the performance of our products without changing the design."

"Cree has a history of introducing significant LED advancements, like our Extreme High Power LEDs, that enable our customers to achieve industry-leading lighting system performance and cost," said Dave Emerson, vice president and general manager for Cree LEDs.

www.cree.com/xlamp •

Ditch Witch New OptiCut Digging System



Ditch Witch®, a Charles Machine Works Company, introduced its new, exclusive OptiCut™ digging system to enhance walk-behind trencher productivity in all soil conditions. The digging system complements contractor and rental company equipment with maintenance-free teeth and 19,000 lbs of tensile strength. The exclusive, all-in-one chain design features integrated tooth technology to ease operator maintenance. The design matches the life of the chain by eliminating one-by-one tooth replacement and associated replacement costs for reduced maintenance downtime. "Our customers continuously drive us to break new ground. OptiCut was designed with a clear focus on their needs, uptime, productivity and profitability," said Steve Seabolt, product manager, service parts, the Ditch Witch organization. "We challenged our engineering teams to maintain product integrity while significantly reducing cost, and the OptiCut exceeded expectations with an innovative, productive and durable design that saves customers time and money."

www.ditchwitch.com/find-a-dealer •

Greenlee Textron Develops New RXM Reel Stand



Greenlee Textron, a Textron Inc. company has developed a new RXM Reel Stand that delivers improved set-up time, mobility and capacity while safely dispensing spools of cable during a pull. A pair of Greenlee RXM Reel Stands can accommodate spools weighing up to 6,000 pounds. The design incorporates a rubber carry handle and weighs only 35 pounds, allowing for easy transport around the job site. This new reel stand also eliminates loose pieces and the need for any additional tools during setup.

"Contractors continue to demand more flexibility from their material handling equipment and at the same time want more ergonomic and safety features as well," said Sara Bauer, Greenlee Product Management Specialist. "This new RXM Reel Stand offers all that plus rapid and secure reel set up."

The stand is interchangeable for use on either side of the reel. It features an open head design for fast, top-loading of the spindle and a patent pending quick adjust mechanism to rapidly accommodate different spool diameters. In addition, the reel stand can fold down for convenient shipping and compact storage.

www.greenlee.com •

Klein Tools Introduces Ratcheting Bolt Cutter

Klein Tools, for professionals since 1857, introduces the Heavy-Duty Ratcheting Bolt Cutter (Cat. No. 63RBCHD) that cuts through utility grade EHS and guy strand in one smooth, easy cut. The bolt cutter features a spring-loaded cable retention hook that snaps onto the cable in one hands-free motion and keeps individual steel strands from slipping out of the cutting jaws. The cutter also has longer handles and a smooth ratchet mechanism for extra leverage and ease of use.

"Guy strand can be particularly challenging to cut because of all the individual steel strands," said product manager Jocelyn Agüero. "The retention hook holds all of the strands in place so it's easier to cut in one cycle. It also requires less force making the same cut easier and faster than other cutters on the market."

www.kleintools.com •

THE POWER GRIPZ

.COM

Leather Protectors

Boyer
Reid Inc.

*Designed by Linemen,
for Linemen.*

USA, except for California
and Texas © 1997-2006
Boyer Reid Inc.
06/07/06

The Power Gripz are the only gloves
tested and proven to be superior
for grip, arm protection and
all-weather dexterity.

Maximum all-weather dexterity
finger and thumb protection
transmitted from the work to the
work tools.

Patented winding grip
material allows extra
padding for secure grip on
hot, cold or wet gear.

Reinforced wristbands will
hold an extra layer of safety
protection.

Low and High-Voltage Fire
Finger Leather Protectors available
in sizes 8-8.5 through 12-12.5;
Three Finger Mitts sizes 9-11;
Three styles of work gloves - M, L and XL.

#10 Rating: 30 cal/cm² - AC Rating: 575V

Ultimate Protection. Maximum Comfort.

Tested by
ArcWear

Call: 877.271.0444
or order online at
www.ThePowerGripz.com



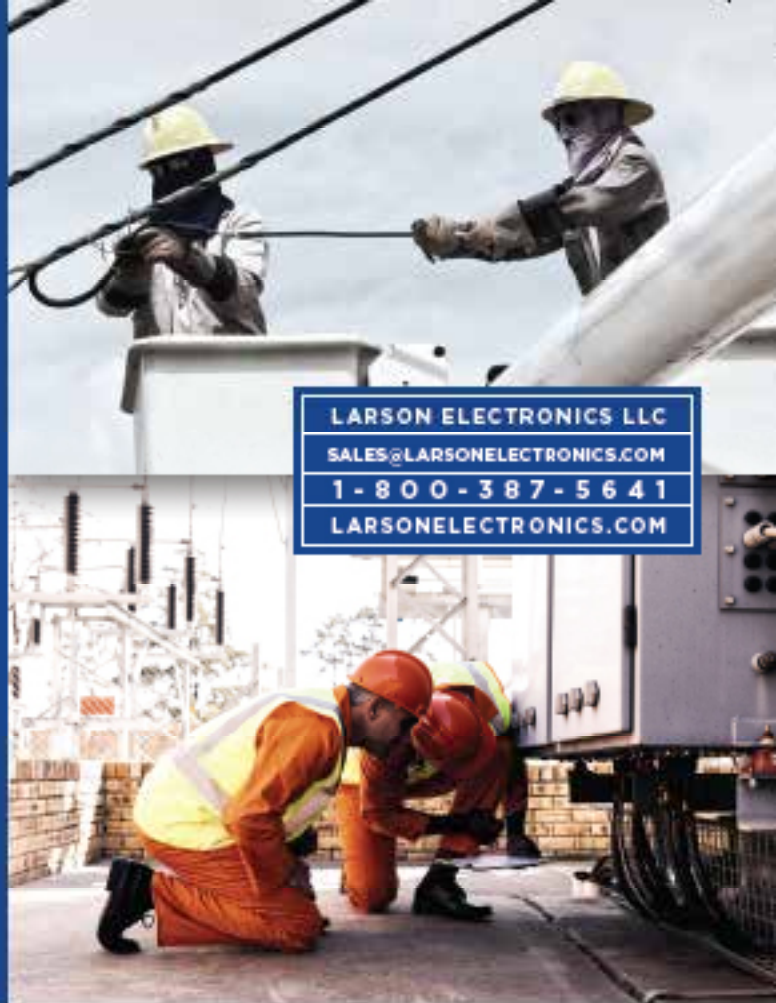
Fully covered.

No one thinks about hazardous area lighting more than Larson Electronics. That's why we carry a complete lineup of gear for linemen to keep them safe in challenging conditions.

We offer LED light towers and diesel power generated light towers that provide safety and durability even during the darkest of hours. Our LED explosion proof flashlights are low heat, high powered and contain built-in safety measures for hazardous work areas.

Whether it's routine maintenance or a citywide power outage, Larson Electronics provides the lighting solutions that keep your crews safe and focused.

Call us today at 1-800-387-5641 or email us at sales@larsonelectronics.com to let us meet your hazardous location lighting needs.



LARSON ELECTRONICS LLC
SALES@LARSONELECTRONICS.COM
1-800-387-5641
LARSONELECTRONICS.COM



Mini LED Light Tower with 3000VA Generator
Two 400 Watt LED Lamps
Part # WAL-ML-2X400LTL-LED-3G

INTRINSICALLY SAFE
LED FLASHLIGHT
Part # EXPRL-95



Mobile Light Tower with
Diesel Engine Generator
4 X 1250 Watt Metal
Halide Lamps
Part # WCDE-4-MLK



“Don’t Make a “Shovel Choice” When Selecting a Transport Vehicle”

You wouldn't choose a shovel to dig a trench, when a mini-excavator is available to do the job faster, easier, safer and with greater overall economy.

So why choose a roll-back instead of a Retriever?



Developed in the 1960's... and not much has changed since.



Loading construction equipment onto a transport truck is inherently hazardous, made even more so by the roll-back's steep load angle.

To make it really dangerous, add some rain or snow, maybe a little oil or any kind of machine malfunction. Relying on the parking brake to hold a heavy machine in place on a steep deck is another unnecessary risk.

Retriever eliminates those risks, while speeding the loading/unloading process.

Retriever was introduced in 2002... and it's been getting better every day.



The First New Idea in Equipment Transport in 50 Years

Retriever Is a Simpler, Easier-To-Use, Safer and More Economical Way to Get The Job Done.

Patented Curved and Hinged Deck

Low Deck Height/Shallow Loading Angle

Exclusives! No Hydraulics!
No Idle™ System

Greater Payload Capacity

Fewer Moving Parts

E-Primed plus Powder Coat Finish

Aircraft Carrier Quality Slip-Resistant Deck



There Isn't a Competitor That Can Match Us

RETRIEVER by VERSATRAN^{INC.}

New Demolition Work Gloves by Milwaukee Tool

Milwaukee Tool continues to provide jobsite solutions with the introduction of the new Demolition Work Gloves. Designed from the ground up to be 5X more durable than other gloves available today, they offer the perfect combination of ultimate durability and all day comfort for users that require reliable protection when working with an array of different jobsite materials.

“Tradesmen’s hands are some of the most important tools they use, so protecting them is an absolute necessity,” said Bobby Shaw, Director of Product Marketing for Milwaukee Tool. “While many gloves on the market can offer adequate protection, they often sacrifice comfort for durability, and vice versa. We knew there had to be a better way to protect tradesmen’s hands, giving them increased maneuverability and durability without forgoing comfort.”

All key working areas of the gloves – fingertips, palms and thumbs – are reinforced with Armortex® for increased durability and grip. The gloves feature breathable lining and mesh backing to help wick away moisture and provide all-day comfort. A knuckle protection pad provides ultimate knuckle protection from scrapes and impact without limiting movement or comfort, and a terry cloth wipe on the backside provides a comfortable place to remove sweat from the face and brow.


As touchscreen smartphones and tablets have become more prevalent on jobsites, the need for tech-compatible gloves is an absolute must. To address this issue, these new gloves also include a SMARTSWIPE™ Knuckle that permits the use of touch screen devices without removing gloves or wiping dirty finger tips across the screen.

For added convenience, the gloves are also designed with a webbing pull loop so users can easily pull them on or attach them to a tool bag for storage.

On or off the jobsite, Milwaukee’s Demolition Work Gloves* give users the durability and comfort they need without sacrificing jobsite productivity.

www.milwaukeetool.com •







SERVING THE UTILITY
INDUSTRY NATIONWIDE

PRODUCT ATTACHMENT APPLICATIONS:

- Digger Derricks
- Field Service Equipment
- Telescopic Buckets
- Boom Cranes
- Personnel Carrier




Visit us at
Booth # N-3300



MADE IN AMERICA

To locate a dealer near you, call 877-667-6652
or visit us at morookacarriers.com





**PANTHER – GOES WHERE YOU WORK
AND WORKS WHERE YOU GO!**

A PAYLOAD OF TECHNOLOGY YOU CAN TRUST.

The 4000R (rated capacity 10000 lbs) really willy and carries a big payload. It's got a 100-hp engine in front and a wide spreader for your implements out back. And since it's a PANTHER, it comes standard with the performance, tech, rugged fit, fit and well as work ability you demand on your worksite. Get on the right track. Get a PANTHER. www.pinotti.com



DEALERS WANTED
FOR THE PANTHER IN YOUR AREA



PHOTO COURTESY OF PINOTTI

ELECTRIC UTILITY FLEET MANAGERS CONFERENCE

SOLUTIONS FOR MANAGING A PROGRESSIVE FLEET

JUNE 5-8, 2016

WILLIAMSBURG LODGE
& CONFERENCE CENTER

WILLIAMSBURG, VIRGINIA

EUFMC

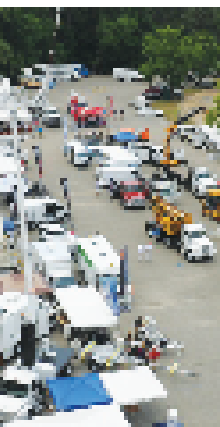
WILLIAMSBURG, VA

EST. 1963



Join **fleet professionals** from **investor-owned** electric utilities, electric cooperatives and electrical contractors from across the U.S. and Canada at the industry's premier educational event featuring:

- Presentations by industry experts, manufacturers and fleets
- Roundtables where fleet professionals and representatives from manufacturers and service providers share best practices
- A drive through utility equipment demonstration and an exhibition of the latest equipment and services for utility fleets



Dedicated to providing
educational value to
utility fleet professionals

REGISTER
TODAY!



757.220.1795

eufmc.com

Platinum Sponsors:



Attec

FREIGHTLINE

WORK SMART

BRIDGESTONE

DEEPO
U.S. SERVICE

Telogis

ETI

AMERICAN ENERGY

TEREX

**BUILT
TONGH**



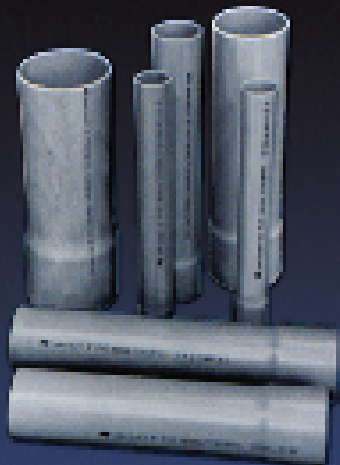


american
pipe &
plastics Inc.

PART OF **A**atkore
INTERNATIONAL



AMDUCT POWER, COMMUNICATIONS AND ELECTRICAL CONDUIT



- Manufactured to meet NEMA TC2, NEMA TC6/8, ASTM F512 and UL651.
- Sweeps, bends, and fittings are manufactured to meet NEMA TC3, NEMA TC9 and UL651.
- Our PVC Conduit has a smooth bore that reduces cable drag.
- Lightweight, flexible, easy to handle and resistant to impact.
- The solvent welded joints ensure water tight integrity excellent resistance to chemicals, rot, rust and electrolytic corrosion.

www.ampipe.com – (607) 775-4340

Company	Pg.	Website
Albarrie	13	www.albarrie.com
Amerex	36	www.amerex-fire.com
American Technical Publishers	21	www.atplearning.com
American Pipe & Plastics	35	www.ampipe.com
Bethea Tool	19	www.betheatool.com
Buccaneer Rope	6	www.bucrope.com
Elk River	4	www.elkriver.com
EZ Stak	11	www.ezstak.com
EUFMC	34	www.eufmc.com
Geny Hitch	20	www.genyhitch.com
Golight	17	www.golight.com
Greaves	16	www.greaves-usa.com
Herculock	6	www.herculock.com
Hogg & Davis	3	www.hoggdavis.com
iToolco	15	www.itoolco.com
Krenz Vent	2	www.krenzvent.com
Larson Electronics	30	www.larsonelectronics.com
Miller Safety Systems	22	www.millersafetyltd.com
Morooka	32	www.morookacarriers.com
Nesco	BC	www.nesco rentals.com
Pelsue	10	www.pelsue.com
Precision Sales & Service	26	www.alternatefuel.com
Powerbully	1	www.powerbully.com
Power Gripz	29	www.thepowergripz.com
Prinoth	33	www.prinoth.com
Ring Power	5	www.ringpower.com
Shawmut Tools	7	www.shawmutequipment.com
Time Versalift	27	www.versalift.com
TSE	IBC	www.tse-international.com
Versatran	31	www.versatraninc.com
Venco Venturo	IFC	www.venturo.com
Xplore Technologies	23	www.xplorettech.com

AMEREX

Amerex Corporation
 P.O. Box 81 • Trussville, AL 35173
 Ph: (205) 666-8271 • Fax: 800-864-6980
 email: sales@amerex-fire.com
 www.amerex-fire.com

"Quality is Behind the Diamond"

EXTINGUISHERS AND FIRE SYSTEMS
 INDUSTRIAL • RESTAURANT • MINING • UTILITY • FACILITY
 WASTE MANAGEMENT • FORESTRY • AGRICULTURE
 SERVER ROOM • TELECOMMUNICATION • AIRCRAFT
 AIRPORT • CONSTRUCTION • OFF-SHORE PLATFORM
 REFINERY • TRANSIT BUS • MANUFACTURING
 VESSEL • MILITARY VEHICLE...MORE!

UL US FM APPROVED

ISO 9001 & 14001
 OHSAS 18001
 CERTIFIED

Designed and Assembled in the USA!

Designed to meet your underground cable pulling needs



UP-120-80HJ
Underground Puller



UP-85-8D
Underground Puller



UP-70-16D
Underground Puller



S660 Sewer Rodder



CP3800 Articulated Boom Puller

Exclusive US Supplier



www.tse-international.com



TIMBERLAND
Infrastructure Solutions GROUP

NESCO

SUPERIOR

**CUSTOMER
SERVICE**

RESPONSIVENESS AND SUPPORT SECOND TO NONE

NESCO Rentals® isn't just a premier provider of utility rental equipment, but a leader in responsiveness and support for all customers. Dedicated rental and service teams, combined with one of the industry's largest rental fleets, ensure NESCO meets your job site needs. Call us now to experience our superior customer service.



Visit our website, build a quote, outfit your vehicles and get to work.

(800) 252-0043 | www.nesco rentals.com

