

The background image shows a large crane with a long, articulated boom drilling a hole into the ground. The crane is positioned next to a tall wooden utility pole. The ground is uneven and appears to be a construction or utility site. The sky is clear and blue. The crane's boom is extended upwards and to the left, with a drilling bit at the end. A worker is visible on the crane's platform. The overall scene is one of industrial activity in a utility setting.

THE UTILITYSOURCE

February 2017

Products and Services for Today's Electric, Telecom, and CATV Utilities

Panther Series

*Goes Where You
Work and Works
Where You Go*

**Hearing
Protection
That You
Want To
Use**

**Tips For Safe and
Productive
Drilling**

DESIGNED BY LINEMEN Proven by Science

100% compliant, meets and exceeds all ASTM F 696 (ASTM F2073),
leather protector glove standards



HIGH VOLTAGE

Protectors Miller
Class 1-4



HIGH VOLTAGE
Protectors
Class 1-4



Fire/Water & Cut Resistant
(CATEGORY A-4)



WORK GLOVE
KEVLAR Lined
- with or without
Knit Cuff

WORK GLOVE
THINSULATE Lined
- with or without
Knit Cuff



Standard
WORK GLOVE



WORK GLOVE also available in
KEVLAR or THINSULATE Lined



10"
LOW VOLTAGE
Protectors Class 00/0

13"



Tested by
ArcWear

Put the Power of Superior Grip and Protection in your Hands!

- Three styles of work gloves M, L, XL and XXL
- Low and High Voltage Five Finger Leather Protectors
available in sizes 8 5/8 through 12 1/2
- Contour & Bell Cuff Protectors available in Class 1-4
- Three Finger Mitts sizes 9-11
- FWR Cut Resistant (A4) Work Gloves
ATP ratings available for 10KV ratings and

Call: 877.271.0444

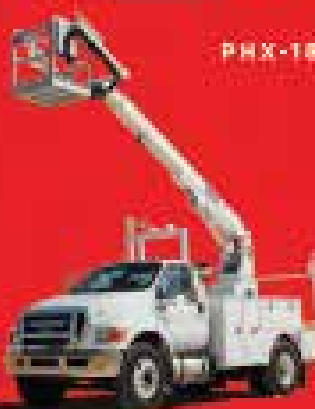
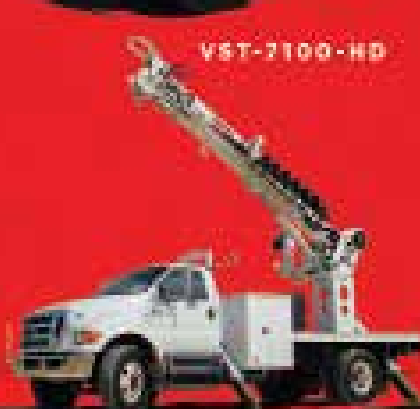
or order online at www.ThePowerGripz.com



VST-2100-HD

PHX-180-1

SKYBIRD-T2151



THD DIGGER DERBICK

VTP-40-NE
CABLE PLACER

VANTEL-29-NE

TEL-29-NE

DEMAND BETTER. DEMAND VERSALIFT.



As the world's leading aerial lift manufacturer, **Time Manufacturing** has made aerial projects safer and more efficient for its customers. Since 1965, the **VERSALIFT** product line has grown to now include over 60 model choices - whether it be a 29' lift or one extending up to 210 feet, there is a VERSALIFT to get the job done.

For more information

Small
254-399-2100
www.VERSALIFT.com

PG 4	Industry News
PG 6	Consult, Customize, Repeat: EZ STAK Delivers Mobile Workspace to ComEd Ahead of Hurricane Season
PG 12	Leading OEM's- Ponsse and Prinoth Join Forces for a More Gentle Forest Footprint
PG 16	Strategic Partnership with Finnish Forestry Expert PONSSE
PG 18	Panther Series Goes Where You Work & Works Where You Go
PG 22	Hearing Protection That You Want to Use
PG 24	Tips For Safe and Productive Drilling
PG 26	Company Profile: Power Gripz
PG 28	Milwaukee Introduces the Industry's First Utility Bucket Light
PG 30	New Product News
PG 32	Ad Index

NATIONAL SALES
MANAGER

Hank Underwood
205-624-3796
george@handfmedia.net

EDITOR

Annie McGilvray
annie@handfmedia.net

CONTRIBUTING EDITOR

Brandon Greenhill
brandon@tipsmag.net

CREATIVE/WEB DIRECTOR

Jacklyn Greenhill
jacklyn@handfmedia.net

ADMINISTRATIVE
DIRECTOR

Steven Hobson
steven@handfmedia.net

CEO
Christy Hobson

PRESIDENT
Glen Hobson



Executive and Advertising Offices

PO Box 1568
Pelham, AL 35124
phone: 205-441-5591 fax: 205-624-3354
www.theutilitysource.net
glen@handfmedia.net

The Utility Source™ is published twelve times a year on a monthly basis by H&F Media Group, Inc. The Utility Source™ is distributed free to qualified subscribers. Non-qualified subscription rates are \$57.00 per year in the U.S. and Canada and \$84.00 per year for foreign subscribers (surface mail). U.S. Postage paid at Birmingham, Alabama and additional mailing offices.

The Utility Source™ is distributed to Power, Telcom and CATV Utilities and Utility Contractors throughout the USA. Publisher is not liable for all content (including editorial and illustrations provided by advertisers) of advertisements published and does not accept responsibility for any claims made against the publisher. It is the advertiser's or agency's responsibility to obtain appropriate releases on any item or individuals pictured in an advertisement. Reproduction of this magazine in whole or in part is prohibited without prior written permission from the publisher.

POSTMASTER: Send address changes to
H&F Media Group, Inc., P.O. Box 1568
Pelham, AL 35124
PRINTED IN THE USA

Get Cool!

Extend transformer life!

Increase transformer capacity up to 166%!

- expert technical assistance
- large inventory
- low sound levels
- one-piece cast aluminum blades
- energy-efficient motors
- galvanized or stainless steel guards

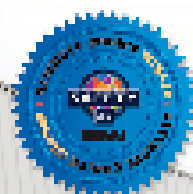
Malta Dynamics, America's Fastest Growing Fall Protection Company, presents the world's most innovative mobile fall protection system.

THE GRABBER®

The Grabber® Mobile Fall Protection System X1250 picks up where the X1240 leaves off by providing more height and reach with a 5' telescoping mast with a single user anchor point. The Grabber® meets OSHA fall protection codes and ANSI Z359.6 design requirements for fall arrest systems, and has been validated by an independent 3rd party ISO 17025 testing laboratory. The versatile Grabber® is designed to be used in either fall arrest or fall restraint and features a one-of-a-kind adjustable mast that can be positioned anywhere between 2' and the unprecedented maximum height of 34'.



Visit us online at
1-800-494-1840 or
www.MaltaDynamics.com



**Highway
Rated**
Official Product By



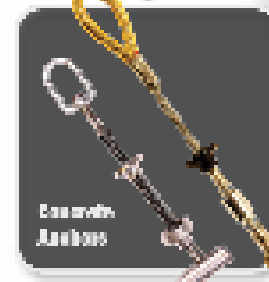
SCAN the QR code,
online, and learn
about this product
on our website.



Self-Retracting
Lifelines &
Lanyards



Full Body
Constrictor
Harnesses



Climbing
Anchors



Beams We Bore

MALTA DYNAMICS

MaltaDynamics.com // (800) 494-1840

Visit us online or give us a call today to request our catalog.

Takeuchi-US Appoints Scott Place as Director of National Accounts

Takeuchi-US, a global innovation leader in compact equipment, has announced the appointment of Scott Place as director of national accounts, effective January 4.

As director of national accounts, Place's primary duties will include overseeing current national rental accounts and potential large fleet buyers.

Place brings over 20 years of experience managing rental locations, dealer locations and more recently the rental industries largest national accounts. He has a proven track record of successfully managing sales teams and will be working out of Takeuchi's U.S. headquarters in Pendegrass, Georgia.

"Scott's experience in the construction equipment and rental industry has spanned two decades and will prove to be instrumental in growing our rental business," said Clay Eubanks, president, Takeuchi-US. "We have confidence that Scott's performance will be valuable for both us and our clients and that he will help continue to grow the Takeuchi brand. We're very excited to welcome him aboard."



www.takeuchi-us.com

Terex Named to Forbes Magazine's JUST 100 List

Terex® recently was named to Forbes Magazine's JUST 100 list, which recognizes the best corporate citizens in America. "Citizenship is a core value at Terex Utilities. We strive to be socially responsible to our customers, team members, and communities," said Jim Lohan, Vice President of Marketing and Sales, Terex Utilities.

The list is compiled from a survey of 50,000 Americans by JUST Capital, a nonprofit created by investor Paul Tudor Jones II. Publicly traded companies in the U.S. were ranked against their peers in 32 industries on criteria such as fair pay, equal opportunity employment, job creation, workplace safety, and respect for employees.

"Terex Utilities congratulates three customers—Dominion, Exelon, and Public Service Enterprise Group—investor-owned utilities that were also recognized on the JUST 100 list in the Utility Industry," said Lohan.

Terex was ranked No. 2 in the Machinery Industry by JUST Capital. Excellent product attributes, especially for clean technology and eco-design, were considered Terex strengths.

www.terex.com

Decide on the Best Time to Replace with the ARI Vehicle Replacement Prioritization Tool

ARI®, a leading global fleet services provider specializing in complex car and truck fleets to more than 2 million vehicles worldwide, has empowered fleet managers with direct, online access to data vital in deciding the best time to replace a vehicle with the ARI Vehicle Replacement Prioritization Tool®.

This new technology from ARI helps companies gather and analyze data from their fleets to create a ranked list of which vehicles in their fleets should be replaced first. Customizable for each client, the analysis takes into consideration factors important to the operation of each fleet, prioritizes the replacement needs of the entire fleet and recommends the order of replacements that optimize total cost of ownership.

The ARI Replacement Prioritization Tool analyzes eight criteria, including age, mileage, maintenance expenses (for the last year and over a vehicle's lifetime) and total downtime. It also accounts for how important a vehicle is to the operation of the company. For example, critical vehicles like a crane or a specialized work truck without a back-up would be prioritized in the system. It also takes into consideration the lead-time for replacement and the availability of like-kind rentals in the ranking process.

www.arifleet.com

Hansen International, Inc. Promotes Lisa Hansen Beebe to Company President

Hansen International, Inc. is proud to announce the promotion of Lisa Hansen Beebe to company President. Beebe replaced longtime company President John Seehof, who retired, yet remains as a consultant to the company. Beebe began her career with Hansen International, Inc. in Waukegan, Illinois and moved when the company relocated their manufacturing facilities to Lexington, South Carolina. For 22 years Beebe has effectively held a variety of positions with Hansen International, Inc., from Sales to Human Resources and more recently company Vice President. "Her experience and loyalty to the company speaks volumes of her, not only as a valued member of this company, but as an overall person," said John Seehof, former President of Hansen International, Inc. "Over the years, Beebe has displayed, through her various roles, the type of leadership, dedication, and versatility that is necessary to succeed in this industry."

Hansen International was founded in 1920, the tradition of quality, customer service, and growth continues today as seen through markets such as heavy truck, class 6, 7 and 8, utility/service, and fire & emergency.

www.hansenint.com

**Weather Resistant
Solid Brass Padlocks**
Made to your specifications in the U.S.A.

HERCULOCK
Hercules Industries, U.S.A.

HERCULES INDUSTRIES, INC.
Manufacturer of HERCULOCK Padlocks
P.O. Box 197 • Prospect, Ohio 43342
Toll Free: 1-800-345-2590
Fax: (740) 494-2274
www.HERCULOCK.com

A NEW GENERATION OF CRANE

Visit us at
Booth #3411

**THE
WORK
TRUCK
SHOW.**

Venturo service cranes will be reaching new heights in 2017. With the addition of van cranes, enclosed service body cranes, new designs, new upfit options and added features on existing cranes, Venco Venturo Industries will be innovating like never before.

Stay tuned throughout 2017 for new and exciting changes with Venturo service cranes!



**VENCO
VENTURO**
INDUSTRIES LLC



12110 Best Place | Cincinnati, Ohio 45241
800-226-2238 | VENTURO.COM

Consult, Customize, Repeat: EZ STAK Delivers Mobile Workspace to ComEd Ahead of Hurricane Season

By: Jordan Whitehouse



needed a new logistics support trailer for the upcoming hurricane season. This wasn't the first time Weiser had gone with EZ STAK for a project like this, and it probably wouldn't be the last.

Based in Schaumburg, Illinois, and Kingston, Ontario, EZ STAK is an industry leader and manufacturer of vehicle interior storage systems for work trucks, vans and trailers. The company prides itself on working one-on-one with its customers to develop custom storage solutions that are tough enough to take daily abuse. That's what it had done with Weiser in the past on previous ComEd projects, and that's what Weiser expected again. He wouldn't be disappointed.

The Need: A Fully-powered Mobile Office

A utility logistics support trailer is basically a fully-powered mobile office. When an area experiences a power outage, for example, this type of trailer rolls up alongside bucket trucks and other service vehicles, and comes stored with extra tools, materials and parts — everything needed to get the lights back on. It also provides power to the trailer itself and other support vehicles onsite, too.

EZ STAK was tasked with upfitting a new — and completely empty — 28-foot-long logistics support trailer with power, heat and air conditioning, and a workspace with organized storage space.

"We had to be very organized to get it done, especially because of the tight timeline and electrical needs, but this is

June 1 marks the beginning of hurricane season in the Atlantic Ocean, and even though Illinois' midcontinent location means that a full-fledged hurricane rarely hits the Prairie State, its utility companies still have to be prepared for the remnant rains, winds and even tornadoes that can batter its customers throughout the summer and fall.

Commonwealth Edison Company — aka ComEd — knows that hurricane season well. Around since 1907, it's now the largest electric utility in Illinois, servicing 3.8 million customers across northern Illinois. Downed power lines. Regional outages. They're just part of the job for ComEd. But to respond properly and quickly, its field workers need organized, dependable response vehicles that are ready to roll no matter the conditions.

That's why, in January 2016, ComEd's Equipment Compliant Specialist, Steve Weiser, turned to EZ STAK when they



NEED HELP FINDING YOUR TOOLS?

Durable, modular storage systems feature lightweight aluminum drawers, cabinets, lockers and shelving that drive efficiency and productivity – and help you find your tools.



Ask us about custom fit solutions for your next truck.
630.994.3500 www.ezstak.com



Made in the United States
Since 1960



443 Diverse
Diverse Supply



They aren't in a kitchen carefully closing a drawer; they're rough and tumble lineman hammering it."

And yet, as durable as everything is in the trailer, it's quiet in transit. Unlike some products out there, EZ STAK's drawer units come with either 200- or 500-pound heavy-duty ball bearing slides, so there's virtually no vibration or rattle when the trailer is out on the road.

The Process: Hand in Hand with ComEd

EZ STAK isn't the type of company to send a few off-the-rack ideas to a potential customer and say, "Pick one." It's all about customization and consultation for this family business founded in 1998 by Paul Lawrenson's brother Mike. "A lot of guys don't like getting into the custom aspect because of the time commitment," says Paul. "They just like selling something out of a catalogue, and if it doesn't work for you, well too bad. But that's not us. In every project, there's always an element of people needing something a little different, and that's what we do."

Such was the case on this project. From a first meeting in mid-January 2016 until the final trailer delivery at the end of May that year, Lawrenson and ComEd's Steve Weiser kept in close contact. Sure, EZSTAK had done similar work before, but its designers and technicians wanted to make sure they knew precisely what ComEd was looking for. Which areas, they wondered, would be used the most? What equipment will utility workers grab first? How do we make sure the trailer's weight is balanced properly?

Once the EZ STAK team had its answers to these questions — and many others — it plugged them into its computer design program, SolidWorks, and created a 3D model of the trailer. (By the way, EZ STAK has a version of SolidWorks on

nothing new to us," says Paul Lawrenson, EZ STAK's National Fleet Manager. The company has extensive experience upfitting fleet vehicles from the utility, telecom, cable, oil and gas, and construction industries. "We've done projects like this for the Red Cross, Laclede Gas in Missouri, Hydro One in Ontario, National Grid on the U.S. east coast, and many others in the U.S. and Canada."

All told, EZ STAK procured and installed a 7,000-watt diesel generator inside a noise-cancelling cabinet; provided and installed the fuel tanks, the roof-mounted air conditioner and all of the 110-volt wiring for lights, plugs, switches and the electrical panel; and manufactured and installed all of the interior cabinetry, which included shelving, drawers and lockers for clothing.

As with each of its upfitting projects, EZ STAK used products made only of high-grade aluminum in this trailer, meaning they're all lightweight but tough and durable — able to take plenty of daily abuse. "I think what sets us apart on a project like this, outside of our ability to completely customize it to the customer's needs, is how everything can take a pounding," says Lawrenson. "The guys who use it aren't easy on it.



Complete
Solutions
Commitment
Confidence

You wear a hard hat and have the courage and commitment to take on the biggest challenges. The job can be dangerous and we know you depend on not just your equipment, but on a company offering complete solutions including safety evaluations, product selection, training, and expertise. A customer-focused company that has your back and gives you the confidence to do your job safely. MSA is that company.

To learn more about MSA's complete line of safety solutions or request a FREE, no obligation safety evaluation, visit MSAsafety.com/safetyevaluation.

WE KNOW WHAT'S AT STAKE.

©2011 MSA Safety Company

MSA

The Safety Company



The Final Result: Tough, Organized, Ready to Roll

EZ STAK not only made the deadline, they came in a week early, ensuring ComEd had plenty of time to have the trailer serviced, stocked and ready to go by June 1.

The final result is a clean, well-lit and tough trailer that's been carefully organized according to need. "We put a lot of thought into how the users were going to use the trailer," says Lawrenson. "So points of entry in the trailer and where the spots are that are going to be busy and what's the stuff they're going to grab first. I think we did that really well."

ComEd agrees. After a year on the job, there have been no complaints, and now the logistics support trailer is getting set for its second hurricane season.

Looking back over the life of this project, Lawrenson says he's most proud of how well EZ STAK worked with Weiser and ComEd to come up with a design and a final logistics support trailer that everyone involved could be proud of. "It's a really good example of what we can do," he says. "It displays flexibility, it displays listening to the customers, it displays working in a tight timeline and it displays familiarity with a heavy-use market. You have to build stuff strong enough to withstand that use, and we did that here."

In short, if those trailer walls could talk, they'd likely say: "Bring it on, hurricanes."

www.ezstak.com •

its website called "Build Your Own" that allows customers to design their ideal layout and submit it for quoting.)

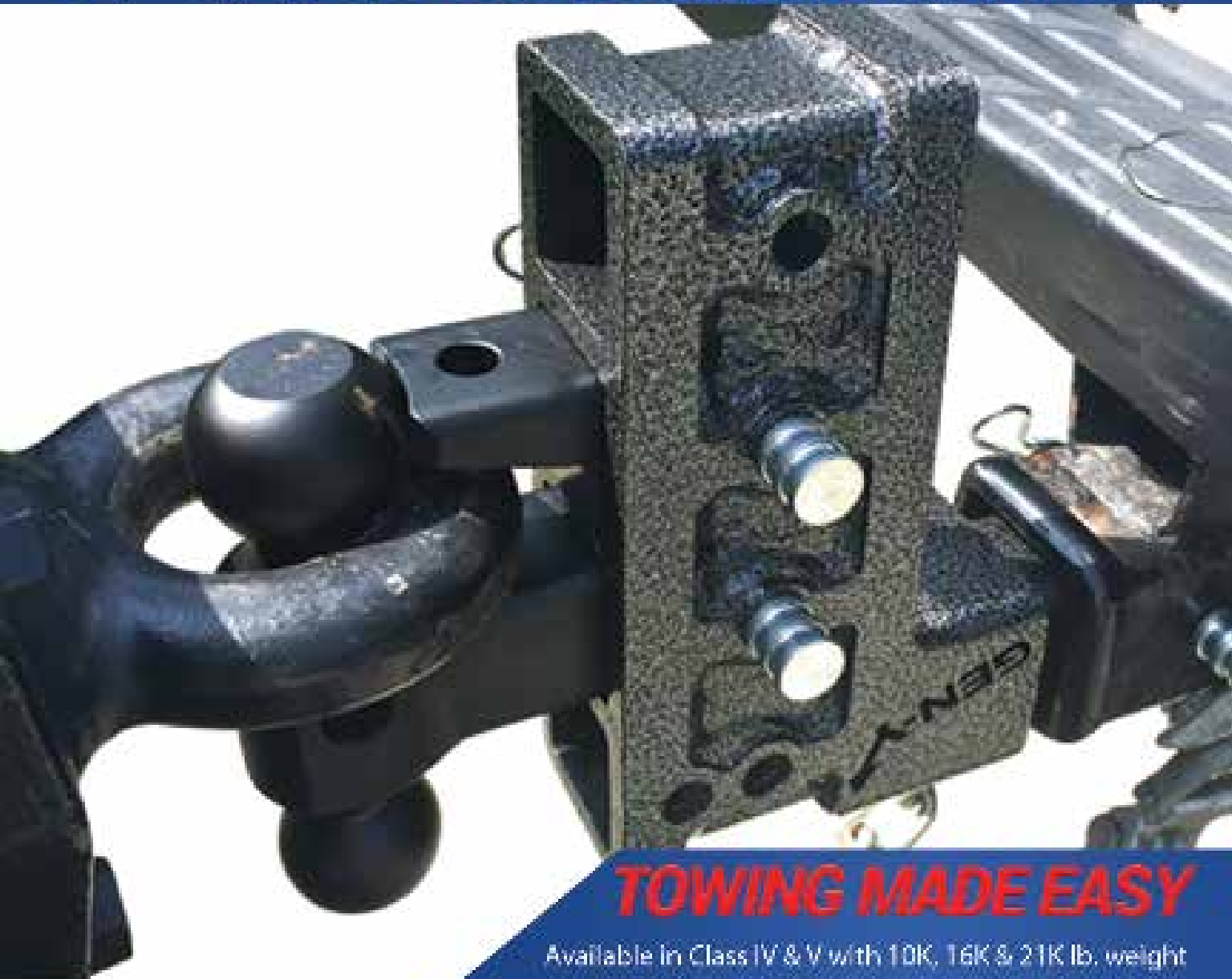
Weiser had few complaints about the initial design. "After he told us what he needed, what he was thinking, we put together the proposal and concept, showed him, and he thought it was great," says Lawrenson. "He was quite happy with what we came up with, and he likes our cabinets because they're very light and very strong."

Empty trailer ready by late winter, EZ STAK began installations at its state-of-the-art manufacturing and distribution center in Schaumburg, Illinois. The company brought in some of its most experienced technicians to work on the project, mainly because the electrical requirements were so extensive but also because they were working on a very tight timeline. From procurement to delivered trailer, a project like this typically takes a year to complete. This one had to be done in half the time to be ready for hurricane season.

Steve Weiser made a few visits to EZ STAK during the installation phase, and he liked what he saw. Again, he made few requests for changes. "Steve's a very special guy," says Lawrenson. "He's a diesel mechanic and he spent a lot of time in the field, so it's kind of nice when you have that because they can relate when you try to explain something you're coming up against. So overall it was a great working relationship, we worked hand in hand really well throughout the project."



CAN ONE HITCH TAKE CARE OF ALL YOUR TOWING NEEDS?



TOWING MADE EASY

Available in Class IV & V with 10K, 16K & 21K lb. weight capacities. Safely and efficiently move any trailer without having to swap out hitches.

GEN-Y[↑]HITCH

BY GENY INDUSTRIES

574-218-6363

www.GenyHitch.com

Made in the USA



Leading OEM's - Ponsse and Prinoth Join Forces for a More Gentle Forest Footprint

OnTrack – a Horizon2020 project reducing the impact of forest machines on soft soils

Together with European forest research organizations and SME's, major international cut-to-length forest machine manufacturer Ponsse Plc, and tracked utility vehicle manufacturer Prinoth SPA will join forces in OnTrack, a new EU Horizon 2020 Innovation Action. The purpose of the two-year project is to investigate alternative running gear in a form of a tracked chassis system that could reduce the impact of machines on forest soils, while maintaining or even improving productivity.

Allowing better machine utilisation rates in the face of milder and wet weather

If successful, OnTrack will set a new environmental performance standard in forest operations, encouraging others to follow suit. "The anticipated outcomes may significantly reduce the impact of forest machines on soils, simplifying planning and allowing higher machine utilization rates for contractors, thus lowering costs and improving the environmental profile of the sector", says OnTrack project coordinator Rasmus Astrup at the Norwegian Institute for Bioeconomy Research (NIBIO).



PROUDLY
MADE IN THE USA

QUALITY. STRENGTH. PRECISION.

That's what makes every drilling tool
Jeffrey Machine manufactures
the best in the industry.



**JEFFREY
MACHINE INC**
DRIVEN BY PRECISION

3841 Industrial Drive • Birmingham, AL 35217
205.841.8500 • JeffreyMachine.com

Merging well-proven technologies from two different sectors

The OnTrack project will test various configurations of Prinoth's tracked undercarriages on PONSSE timber forwarders. Forwarders are heavy terrain-going machines designed to extract large loads of timber to the nearest forest road. When soils are soft during the winter thaw or after excessive

rains, both the risk of damaging the soil through compaction and rutting, as well as fuel consumption, increase considerably. Kalle Einola, R&D Manager responsible for technology, product safety and IPR at the leading Finnish cut-to-length OEM, Ponsse Plc is enthusiastic about the EU-funded OnTrack project. "Yes, OnTrack is really an exciting project, both for Ponsse and for my engineering team as well. The basic idea behind the

project is good and its implementation with a heavy-duty rubber track system is something we believe in. It is also interesting with a concept for a new forwarder that is built from readily available commercial components", Einola says. Ponsse Plc is established in 1970 and is presently one of the world's biggest producers and distributors of cut-to-length harvesters and forwarders, with subsidiaries in 11 countries and 30 dealers around the world.

The enthusiasm is just as great from the supplier of tracked undercarriages: "OnTrack is an exciting project since it aims to combine the best off-road capabilities with minimal impact on the environment", says Alessandro Ferrari, Vice President of Sales for the Tracked Utility Vehicles' Business unit at Prinoth. "Contributing to potential new market sectors with new environmentally-friendly solutions is of great strategic importance to us at Prinoth", Ferrari concluded. Prinoth's main contributions to the OnTrack project are their expert knowledge and proven track technologies, which combine low ground pressure with low vibration, exceptional off-road capabilities, and high-travel speeds.

A competent and representative consortium

In addition to Finnish Ponsse Plc and Italian Prinoth, partners include Konshtolmen AB and Skogforsk in Sweden, Metsäteho Oy in Finland, LSFRI in Latvia, KWF in Germany, and Owren AS and NIBIO (coordinator) in Norway. The OnTrack concept machine will be tested in all participating countries.

This H2020 Innovation Action was initiated in the fall of 2016 and it will run over a period of two years.

www.prinoth.com



PANTHER CARRIERS
Suited for your industry.

- ✓ Innovative chassis design provides easy implement installation
- ✓ Improved ROPS certification allows optimal payload
- ✓ State-of-the-art cab design provides comfort and visibility
- ✓ CLEAN MOTION: the first tier 4 carrier line-up in the industry
- ✓ Microcontroller technology provides up to 20% in fuel savings


The PANTHER model series from PRINOTH breaks solely with long-standing traditions. Engineering increased efficiency, the PANTHER provides truly unparalleled travel, optimal track performance, operator safety and reduced maintenance. All this and the ability to customize your vehicle according to your job needs. Contact us to find out how PRINOTH's PANTHERS fit your needs for both distribution and transmission projects.

PRINOTH Ltd - North America
P.O. Box 1700 1101
www.prinoth.com



NOBODY SAID IT WOULD BE EASY.

UNTIL NOW.



Rough-in an entire
suite using one cart

Transport up to two 1000'
spools and one 250' coil
of MC Cable (sold as shown)

Won't tip over

MC CART™

Product #:
MC300

iTOOLco.

INNOVATIVE TOOLS FOR PROFESSIONAL ELECTRICIANS & CONTRACTORS

iTOOLco.com 865-670-3713

WE HAVE THE ROPE TO GET THE JOB DONE.




Buccaneer Rope
COMPANY
800-358-767 www.bucrope.com

Strategic Partnership with Finnish Forestry Expert *PONSSE*

PRINOTH is proud to announce its participation in a consortium of European forestry institutes together with the leading cut-to-length forestry OEM PONSSE.

The partnership aims at developing a forwarder with rubber tracks that can protect the forests and soils while improving productivity and access to weak forest grounds. Consortium members were especially looking to set more stringent thresholds for damages, to adopt improved operations practices and to better regulate ruts' creation and treatment.

PRINOTH's PANTHER undercarriages which have a very low ground pressure, as low as 4 psi (pound per square inch) or 281 g/cm² provided the best solution to the consortium. The PANTHER undercarriage has a unique undercarriage system equipped with rubber tracks and an exclusive high travel large wheel/tandem that were developed to work together to provide the best off-road capabilities with minimal impact on the environment. This distinctive feature will help reach one of the project's specific objectives to significantly diminish wheel rutting and soil disturbance compared to a regular wheeled-forwarder.

Project member Tommy Blom said: "We have tried other products from other companies before hearing about PRINOTH's PANTHERS but none could provide the low ground pressure or the off-road capacities that PRINOTH can."

The project will comprise of PANTHER undercarriages assembled into a PONSSE timber forwarder. "We are quite confident that the payload capabilities in extreme off-road conditions that our undercarriage system can provide is the solution that this consortium has been looking for," commented Alessandro Ferrari, VP of Sales for the Tracked Utility Vehicles Business unit at PRINOTH. The PANTHER undercarriages will also provide speed and as such, increased productivity for businesses. More specifically, this forwarder will allow for exceeding machine utilization rates for contractors which will, in turn, translate into a more constant wood supply not dependent of weather conditions.

For PRINOTH, as a manufacturer, this project means that the undercarriage expertise developed over the years will transpose to a very demanding industry like forestry. The company is always eager to develop new markets for its products. "Having such a versatile product, we know we can meet any customers' needs. This new partnership with PONSSE and the consortium is really exciting for us and we look forward to seeing the tests' results," said Alessandro Ferrari, Vice-president of Sales for Tracked Utility Vehicles at PRINOTH.

www.prinoth.com •

Shoo-pin™

Flex-Cable Adapters

PT-FX Series adapters are designed to terminate high-strand flex-cable (locomotive, mining, welding) to machinery, panels, and transformers. The pins fit mechanical set-screw type connectors and are sized for the current carrying capacity of the cable. These adapters feature the Greaves flared Shoo-in™ barrel-opening design for easy cable insertion. Insulating covers are provided.

Wherever flex-cable terminates in a set-screw lug:

- Telecommunications
- Construction Sites
- Drilling Platforms
- Theme Parks
- Locomotive
- Welding
- Marine
- Mining



GREAVES

www.greaves-usa.com

800-243-1130

Panther Series



Goes Where You Work and Works Where You Go

Innovation is at the heart of PRINOTH's mission and vision. The company always strives to push boundaries further, and to create new generations of vehicles that fit the needs, realities and ecological responsibilities of each of its customers.

The outcome of years of Innovation

PRINOTH's expertise in building utility vehicles and other machinery such as snow groomers has translated into designing the efficient and powerful PANTHER carriers. One of the unique aspects of this type of soundly engineered vehicle is the advantage of extremely low ground pressure. PRINOTH vehicles offer optimal contact with the terrain, yet only gently touch the ground. This means that crews can access hard-to-reach work sites while leaving virtually no trace behind. In the early 2000s, our ongoing quest to provide optimal performance, flexibility, reliability and safety to all trades lead to the creation of the PANTHER series.

In 2011, following more than 3 years of research and development, and a host of PRINOTH-exclusive innovations,

the PANTHER platform was introduced and has not stopped evolving since.

The PANTHER Series

Whether mud, gravel or snow, the PANTHER carriers are reliable tools for extreme use in extreme environments. Thanks to their huge payload, these vehicles can be equipped with a multitude of specialized attachments. This makes them ideally suited for all types of operations in electric utility, construction, oil and gas, mining, and many more industries. With its one or two-person cab, large deck space as well as ease of implement installation, the PANTHER is ready to perform without fail in all sectors.

All terrain reliability

While carrying the biggest payload in the industry, the PRINOTH PANTHER can reach work sites in any terrain: water, rocks, steep hills, swamps or even deep mud. The overall design allows the PANTHER to reach fording depths of up to 1,397 mm (55 in). The PANTHER performs brilliantly at any angle and in any situation.

Rugged Dependability

STANDARD IN EVERY MACHINE WE BUILD!

Hogg & Davis has been proudly
manufacturing utility line equipment
for more than half a century.



Our trusted products are part
of the fleets and tool cribs of
nearly every investor-owned
power and communications
company in the United States
and beyond.



HOGG & DAVIS, Inc.

HOGG & DAVIS, Inc.

3800 EAGLE LOOP • ORILL, OR 97044

TEL 541.254.1001 • FAX 541.254.1080

WWW.HOGGDAVIS.COM

Introducing Our Best Lineman Pac EVER!

Hoffman Boots is proud to introduce our new Felt Lineman Pacs with all natural, crack-resistant rubber for years of service.

Best Features

- Protective Toe or Plain Toe Option
- Reinforced Heel Counter and Toe Cap
- Crack Resistant Natural Rubber
- 10", 12", or 14" Heights
- Hoffman's Dual Steel Shank System
- 9mm Wool/Felt Lining
- Optional ASTM F2413-11 EH Rating

www.HoffmanBoots.com
Call 1-800-925-1599 or (208) 786-4851
Hoffman Boots, 100 East Riverside, Kellogg, ID 83837

LINEWARD CORPORATION

Built to efficiently bury or pull underground cable, pipe or fiber optics.

INFO@LINEWARD.COM | (800)-816-9821 | WWW.LINEWARD.COM

Rubber track design features a zigzag pattern that increases traction and side-hill grip; PRINOTH's exclusive large wheel tandem undercarriage provides unparalleled off-road mobility and comfort;

Largest payload capacity in its class: from 5,420 kg (12,000 lb.) to 20,865 kg (46,000 lb.); Elevated engine position provides optimal fording depth of up to 1,397 mm (55 in.); Pavement-friendly rubber tracks and remarkable speed make the PANTHER highly mobile.

RAD Chassis

The PANTHER T16 & PANTHER T22 carriers from PRINOTH generate extremely low ground pressure even when loaded to their maximum capacity. Through optimum load distribution over the innovative and exclusive chassis design, the PANTHER T16 and PANTHER T22 can be easily outfitted with the right tool to work in any sector. The new RAD chassis is a unique innovation and will raise the bar in terms of productivity in the construction sector. Customers will save hundreds of hours during their equipment installation. It is a design that PRINOTH created in collaboration with implement OEMs to minimize their challenges of sub-base assembly to a tracked vehicle.

NEW PRODUCT: THE PANTHER T14R

PRINOTH is pleased to announce the launch of the newest model in the PANTHER series, the PANTHER T14R Rotating Dumper. Offering the highest speed (13 km/h--8.1 mph) combined to the highest payload (13,200 kg--29,100 lb.) in its class, the PANTHER T14R carrier will set new standards in productivity and mobility and will present a patent-pending innovation called direction reset. This vehicle will allow the continuous rotation of the upper portion of the vehicle independent from the undercarriage. Moreover, the T14R carrier has the largest payload of any vehicle of this type in its category. The rotating separation of this vehicle will allow working in tight, sensitive areas where other vehicles do not have access.

www.prinoth.com

ASHER LARGE RENTAL FLEET
100+ Cable Trailers
SINCE 1914 Pulling • Trenching • Cable Drilling

NATIONWIDE DELIVERY

855-885-2295 CALL OR TOLL-FREE!
www.alasher.com

PowerBully

Track Carriers

PowerBully track carriers.

Strong and rugged for challenging tasks.



PowerBully offers the perfect mobile base for digger derricks, cranes, man lifts, bucket booms and dump bodies.

- Versatility of application
- Fully rugged for challenging tasks
- Test load capacities of up to 35,000 lbs
- Sensitive to the environment
- Low ground pressure
- Small footprint on the ground

BLUEIQ

Intelligent Machines

www.powerbully.com

Hearing Protection That You Want To Use



Exposure to environmental noise is one of the leading causes of hearing loss throughout the world. Every day we are flooded with transport, industrial and recreational noises. Some have the added hazard of excessive noise in the workplace, like a construction site or warehouse. This constant exposure wears down the delicate nerve hairs in the inner ear in the same way a toothbrush bristles wear down over time.

That damage is irreparable. When it comes to hearing, once it's gone, it's gone. So, how can we protect our hearing and preserve it, regardless of environmental noise?

Hearing loss can be prevented by simply wearing good quality noise protection.

If you are one of the 30 million workers exposed to hazardous levels of noise on the job, hearing loss is likely already happening. While you can't always control the noise, you can control how you protect yourself. Protective ear buds, plugs or earmuffs that provide Noise Reduction Rating (NRR) of 20 or more can block out a significant percentage of damaging noise.

To best understand what damaging noise

is, we need to talk about decibels (dB), or the way we measure sound intensity. On one end, 0 dB is barely audible sound. A normal conversation hovers around 55-65 dB. From there, we move into the higher ranges.

Highway traffic results in around 75 dB and something as simple as a hairdryer accounts for 85 dB. A lawnmower garners 95dB, then it's around 130 dB for jackhammers and up to 140 dB for firearms or a jet engine. Construction sites, as you can imagine, often creep up over 100dB on a regular basis.

So how loud is too loud? Well, if you are exposed to levels at or over 85 dB, particularly for a prolonged time or on a regular basis, you're at a high risk of hearing loss.

Our audiologist recommended audio lines that incorporate noise control technology to offer a number of benefits to keep your hearing safe. For example, the ToughTested line:

- carries an Noise Reduction Rating of up to 26 dB
- can reduce the influence of environmental and background noise by up to 30%,

- has a microphone for hands free communication
- is compatible with smartphones

Most importantly, they help to protect against hearing loss, tinnitus, and the daily stress of excessive noise by dampening loud vibrations before they can damage your hearing. By blocking out such a large amount of environmental noise, using the earbuds allow you to keep music and conversations to safe, hearing-preserving level.

We've all heard the old adage that an ounce of prevention is worth a pound of cure. One place where that is certainly the case is with hearing protection. Don't take your hearing for granted, keep it protected and safe for years to come.

ToughTested (toughtested.com), a leader in audio and power solutions for smartphones and portable devices, put together a piece of contributed content dedicated to hearing safety and what busy workers on the job, driving delivery or snow trucks this winter season should be doing to protect their hearing.

www.toughtested.com •

Measure Concrete Temperature and Maturity in Real Time

Real Time Concrete
Monitoring Equipment



Thermal Evaluation of Mass Pours

TEMP

info@inspectioninstruments.net

www.inspectioninstruments.net/TEMP

tel:1 216 831-6131



**Inspection
Instruments,
Inc.**



TEMP-S Software

- View data in graphical and tabular formats, including peak temperature and maximum differentials
- Estimate concrete strength via temperature sensors/maturity sensors
- Quickly generate full PDF reports
- Cloud-based remote access to data and cellular based real-time communication

Tips For Safe and Productive Drilling



By Dale Putman,
Auger Tooling Product
Support Manager,
Terex Utilities

Once you've selected either an auger drill or digger derrick plus the right auger tool for the job, always know what's below and above the dig location. In the US, "Call before you DIG" by calling 811 can help protect you and others from unintentional contact with existing underground utilities. Canada also has a similar concept, but the phone numbers can vary by province. Also, always inspect the work area for overhead lines to prevent powerline contact and electrocution.

The job site inspection should also include inspection of the digger derrick, auger drill and tools you plan to use. Follow manufacturer instructions for daily pre-shift equipment and tool inspections. It's important to check teeth to make sure they are in good condition and hard face edges of auger flighting and barrel tools for wear or the diameter of the hole may be affected.

Always follow manufacturer instructions for any auger tool repairs. Follow correct tooth installation and removal procedures, using the proper tools. Many tools are designed to make tooth replacement easy, but it can be a dangerous task if not done right. Remember to grease teeth upon installation. This is very important for maintaining free movement during operation and it makes it easier to remove the teeth when replacing them.

Digger derricks and auger drills use a variety of types of stabilizers—A-frame, out-and-down, and straight down. Regardless of the type of stabilizers or outrigger, always use outrigger pads underneath the stabilizer footing. This prevents one side of the machine from sinking into the ground. When the machine is out of level, it can cause your hole to not be plumb.

Finally, tailgate safety meetings should include reminders for personnel to stand at least 15 feet away from drilling operations, to be aware of moving parts and open holes, and to wear proper PPE, including gloves, goggles, hard hats, hearing protection and hi-vis clothing. If work continues around open holes, either cover the holes or wear fall protection and tie off to an approved permanent structure.

www.terex.com •



Applicability Wizard



RegScan ONE

One World, One Platform

Streamlined,
Simplified,
Legal Registers
& Audit Protocols





The only leather protectors **"Designed by Linemen and Used by Linemen"**

The Power Gripz are the only gloves on the market scientifically tested and proven to be superior for grip, protection, heat penetration and all-weather dexterity. What makes The Power Gripz over all other leather protectors are the proprietary patented silicone ribbed fingertips and palm grip pads which provide unparalleled performance.

Ordinary leather protecting gloves were not designed for the linemen's high-voltage, all-kinds-of-weather world. It's dangerous and demanding work that makes ordinary gloves slick from wear and oily residue and wind up being maddeningly slippery in low-weather. Powerlinemen need and deserve a better grip on the tools, small parts and apparatus they use to work more efficiently, keep drop zones safer and get the job done, no matter what conditions.

Why Were the Power Gripz Developed?

Linemen, who must wear both rubber and leather gloves most every day, have found that leather protecting gloves currently supplied are not totally designed to meet the demanding aspects of normal duties. Every day, and especially during inclement weather,

linemen rely on a good grip to get their jobs done safely and effectively. Whether

they are working with small objects, such as nuts and bolts,

working on small line apparatus or using hand or power tools a lot,

a secure grip is essential. Before the invention of The Power Gripz, linemen

had a difficult time performing these routine tasks using standard leather protectors over their rubber gloves.

Advantages of Protected Silicone Ribbed Grip that drive electric linemen's need for safety. Blocks silicone ribbed grip pads to the fingers, thumb and wrist areas of gloves, where they do not obstruct bending and flexing. Leaves gripping THE POWER GRIPZ not work better, only for all uses and hand parts, warm and cool in the heat, without any slippage.

The Power Gripz Design:

These new leather protectors have been designed by a team of linemen who were concerned that the leather protectors on the market today did not meet the needs and the everyday issues that arise in line work. So the team came up with the ideal SOLUTION: THE POWER GRIPZ. These leather protectors were designed, tested and perfected by linemen themselves. With no testing to the ASTM F 496 (ASTM F 2675) standard on the leather glove protectors, The Power Gripz meet and exceed all present specifications for leathering new protectors.

The Power Gripz have been endorsed by Hugh Hoagland, founder and senior consultant to ArcWear.

- The highest leather protector glove ATPV rating in the industry: 40cal/cm2
- Blocks fully 94% of heat penetration in EBT testing.
- Meets and/or exceeds all ASTM F 496 and ASTM F 2675 Standards for leather protector glove design.
- Proprietary grip pads (patent pending) provide unparalleled grip without compromising hand dexterity and safety in all weather conditions.

Order Online at www.ThePowerGripz.com



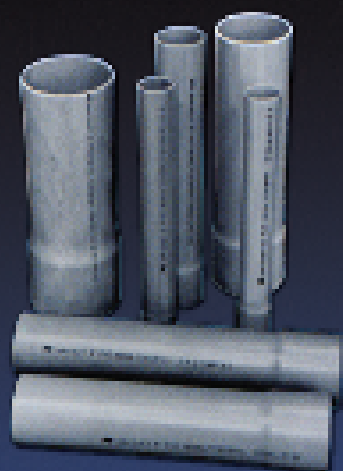


**american
pipe &
plastics Inc.**

PART OF **A atkore**
INTERNATIONAL



AMDUCT POWER, COMMUNICATIONS AND ELECTRICAL CONDUIT



- Manufactured to meet NEMA TC2, NEMA TC6/8, ASTM F512 and UL651.
- Sweeps, bends, and fittings are manufactured to meet NEMA TC3, NEMA TC9 and UL651.
- Our PVC Conduit has a smooth bore that reduces cable drag.
- Lightweight, flexible, easy to handle and resistant to impact.
- The solvent welded joints ensure water tight integrity excellent resistance to chemicals, rot, rust and electrolytic corrosion.

www.ampipe.com – (607) 775-4340



Milwaukee® Introduces the Industry's First Utility Bucket Light

Milwaukee Tool continues to deliver unprecedented innovation for the Utility Industry with the introduction of the new M18™ LED Utility Bucket Light. Built to survive high-voltage and the extreme conditions Linemen face on a daily basis, the new Bucket Light is specifically designed to attach to utility buckets and features dual-rotating heads that provide 2,500 lumens of TRUEVIEW™ High Definition light.

"When performing utility line maintenance, finding appropriate temporary lighting is crucial. Up until now, Linemen have had to resort to positioning a large area light or search light on the ground and direct it towards the bucket, and then supplement that with a light on their helmet. This provides an inadequate and inconsistent amount of light, and often results in a great deal of shadows spotting from the ground due to

the bucket being in the way of the light," said Jason Isaacs, Product Manager for Milwaukee Tool. "By developing a light that is fully optimized for utility buckets, we're helping Linemen vastly improve their visibility on the jobsite with high quality and consistent light that has the versatility to adapt to the work they do."

Through a patented spring-loaded bucket clamp, the M18™ LED Utility Bucket Light is easily adjusted to fit all size bucket lips up to 4". Its low profile design allows it to stay tight to the bucket so users have peace of mind that it won't come into contact with branches and utility poles. Whether clamped on the side or in the corner, its small footprint allows more room for other tools in the bucket and added maneuverability for the user.



The Bucket Light does the work of 2 lights in 1 through a dual-rotating head design which allows users to rotate the light heads 180 degrees vertically or horizontally to place the light beam directly where it's needed. A Spot Mode helps identify problems from afar; a Flood Mode provides a broad beam for area and task lighting; and a Spot Flood Mode assists in viewing issues from over 500 yards away, while providing a wider view of the surrounding area to reduce tripping hazards. The Bucket Light features TRUEVIEW™ Technology, which utilizes the most advanced LED technology and optical designs to deliver a consistent beam, optimized color temperature, and true representation of colors and detail leading to a more productive work area.

The durable high-impact polycarbonate lens can survive harsh jobsite conditions, delivering superior impact durability. An IP56 rating for extreme weather use provides users the confidence that the Bucket Light can hold up to the conditions Linemen commonly experience throughout the day. Additionally, it is tested for use in high voltage situations. As with all of Milwaukee's high output LED lights, the new Bucket Light also features a limited lifetime LED warranty, and a 5-year warranty on the product.

Powered by Milwaukee RED LITHIUM batteries, the new M18™ LED Utility Bucket Light has a run-time up to 4 hours and is compatible with the M18™ cordless system, now offering more than 125 power tool products.

From the power plant, through transmission and distribution, it is Milwaukee's goal to improve productivity and reliability for Linemen by offering performance-driven, cordless solutions on one battery platform. With a base of tools on the M18™ system already used by Linemen, game-changing 6T Utility Cutters, the introduction of the 12T Utility Crimper and three uniquely innovative Utility Cable Cutting solutions this year, and now the industry's first utility bucket light, Milwaukee is committed to making this goal a reality.

M18™ LED Search Light (2122-21HD)

Flood: 2500 Lumens, 4 hours of run-time*

Spot/Flood: 2200 Lumens, 4 hours of run-time*

Spot: 800 Lumens, 6 hours of run-time*

Weight: 10.52 lbs*

*With M18 9.0 Battery

*With Both Light Heads Combined

**Also available as a bare tool (2122-20) or 2 battery kit (2122-22HD)

www.milwaukeetool.com

MECHANICAL TRIMMER



RAYCO EXCLUSIVE FEATURES

- Compact, non-articulated design
- Machine leveling
- 2-mode steering, (front axle, 4-wheel, and crab steer)
- Comfortable operator cabin



CALL - 800.392.2686

VISIT - RAYCOINC.COM

INSPIRING EXCELLENCE IN UTILITY FLEET PROFESSIONALS

**JUNE 4-7
2017**

**WILLIAMSBURG LODGE
& CONFERENCE CENTER
WILLIAMSBURG, VIRGINIA**

EUFMC

WILLIAMSBURG, VA

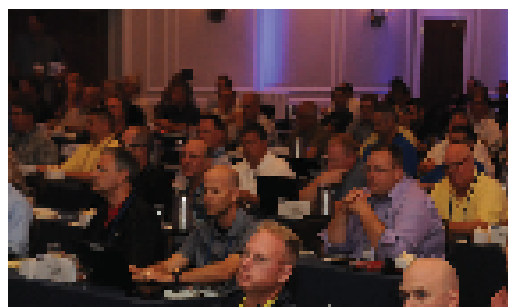
EST. 1953

**REGISTER
TODAY!**

**757.220.1795
eufmc.com**

Join **fleet professionals** from investor-owned electric utilities, electric cooperatives and electrical contractors from across the U.S. and Canada at the industry's premier educational event featuring:

- Presentations by industry experts, manufacturers and fleets
- Roundtables where fleet professionals and representatives from manufacturers and service providers share best practices
- A drive through utility equipment demonstration and an exhibition of the latest equipment and services for utility fleets



PLATINUM SPONSORS



Felling Trailers, Inc. X-Force Gooseneck



Felling Trailers, Inc.'s, X-Force Hydraulic Detachable Gooseneck model line now offers a "Super Low" deck height with the X-Force SL Series. The X-Force SL Series provides an 18" usable level deck height with a 6" ground clearance, making it an ideal spec for Carriers that specialize in extra-tall cargo/equipment transport. The low loaded deck height is ideal for a multitude of applications due to the full width level deck as opposed to a drop-side model. Felling Trailers designed and engineered the SL Series with versatility and functionality in mind knowing that with changing markets, Carrier's cargo/equipment loads vary. The versatility offered with the 18" usable level deck height allows a carrier to transport cargo/equipment as asphalt milling machines, paving equipment, track excavators, etc. that have tall transport heights, ultimately keeping the Carrier's wheels and payday rolling.

The SL Series are offered in four capacities; XF-70-2 HDG-SL (35 ton capacity), XF-100-3 HDG-SL (50 ton capacity), XF-110-3 HDG-SL (55 ton capacity), and XF-120-3 HDG-SL (60 ton capacity).

www.felling.com

HD Electric Company's New Watchman Work Area Voltage Detector

HD Electric Company, a Textron Inc. company, now offers a new Watchman™ Work Area Voltage Detector, designed to detect and alert trained utility personnel working on or near high voltage systems of strong electric fields surrounding high voltage conductors and power distribution equipment.



The Watchman Work Area Voltage Detector, model WM-01, utilizes WAVi™ Work Area Voltage Indication technology, and is typically placed in the vicinity of power lines or high voltage equipment to visually alert to the presence of an electrical field. The detector then alerts crews that they have an active electric field in the area.

The Watchman Work Area Voltage Detector uses spinning LED lights to indicate the presence of an electric field and a nearby energized conductor. The power button serves dual function: press once for on/off function; hold down for self-test to verify battery power and proper functioning of detector.

Once the Watchman Work Area Voltage Detector is turned on, it provides a "heartbeat" pattern to indicate it is actively checking for the presence of high voltage electric fields.

www.HDElectricCompany.com

GSSI Announces New PaveScan RDM Asphalt Density Assessment Tool

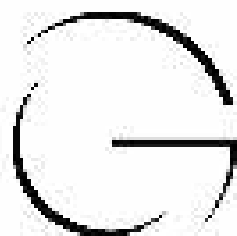
GSSI, the world's leading manufacturer of ground penetrating radar (GPR) equipment, announces its new PaveScan® RDM asphalt density assessment tool, which provides accurate real-time measurements to ensure pavement life and quality. First unveiled at the 2016 Transportation Research Board (TRB) Annual Meeting, PaveScan is already generating excitement and interest among those seeking an easy and affordable assessment tool to nondestructively determine asphalt integrity during application.

The PaveScan RDM system is ideal for uncovering problems that occur during the paving process, including poor uniformity and significant variations in density. By avoiding these problems, PaveScan RDM helps avoid such premature failures as road raveling, cracking, and deterioration along joints.

PaveScan automatically measures the dielectric value to identify anomalies in real-time. In addition, the dielectric values can be used to as a means to correlate percent voids and density in new pavement. The innovative technology enables users to obtain critical density data for QA/QC of new pavements. Unlike other options like nuclear density gauges or radioactive alternatives, PaveScan does not result in any site hazards or require closing off work areas.



www.geophysical.com



GOLIGHT

Revolutionary Lighting Solutions



Durable... Versatile... Powerful... GUARANTEED



When the going gets tough, there's one reliable innovation known to streamer their way and march into the elements to get the critical service back online. More often than not, that means battling wind, rain, snow and ice and doing so in the dark. In those conditions, light that can be dynamically directed where it is needed, when it is needed is an essential tool for safety and productivity. In both emergency situations and day-to-day operations, Golight has proven to be a vital tool in extending work hours and increasing productivity. Golight has been a partner to the men and women who keep our lights on for almost 20 years and we are committed to seeing that relationship grow and develop.



KOOLERS... BANDANNAS... DECALS... Send an email to media@golight.com and let us know you saw our ad in "THE OUTLIER SOURCE" and we will send you some Linean branded merchandise.



GOLIGHT

Company	Pg.	Website
American Pipe & Plastics	27	www.ampipe.com
Asher	20	www.alasher.com
Buccaneer Rope	16	www.bucrope.com
EUFGC	29	www.eufmc.com
EZ STAK	7	www.EZSTAK.com
Geny Hitch	11	www.genyhitch.com
Golight	31	www.golight.com
Greaves	17	www.greaves-usa.com
Hoffman Boots	20	www.hoffmanboots.com
Herculock	4	www.herculock.com
Hogg & Davis	19	www.hoggdavis.com
iToolCo	15	www.itoolco.com
Inspection Instruments	23	www.inspectioninstruments.net
Jeffrey Machine	13	www.jeffreymachine.com
Krenz Vent	2	www.krenzvent.com
LineWard	20	www.lineward.com
Malta Dynamics	3	www.maltadynamics.com
Morooka	32	www.morookacarriers.com
MSA Safety	9	www.msasafety.com
Powerbully	21	www.powerbully.com
Prinoth	14	www.prinoth.com
Rayco	28	www.raycomfg.com
Regscan	25	www.regscan.com
Suitmate	IBC	www.suitmate.com
The Power Gripz	IFC	www.thepowergripz.com
Time Versalift	1	www.versalift.com
TSE	BC	www.tse-international.com
Venco Venturo	5	www.venturo.com



KEEPING AMERICA ON TRACK

PRODUCT ATTACHMENT APPLICATIONS:

- Digger Derricks
- Field Service Equipment
- Telescopic Buckets
- Boom Cranes
- Personnel Carrier

MADE IN THE USA





Visit us at
Booth #2883
in the Gold Lot

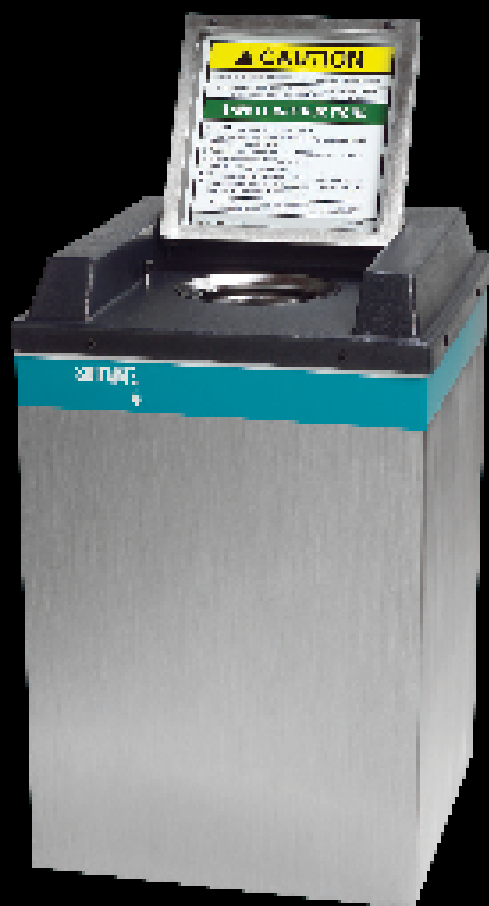
To locate a dealer near you, call 877-667-6652
or visit us at morookacarriers.com



SUITMATE®

Swimsuit Water Extractor

What's your
locker room missing?



For additional information visit
www.suitmate.com

Manufactured by Extruder Corporation
884 Martin Drive P.O. Box 88 - South Plainfield, NJ 07080 - USA
1 (800) 555-5555 • Fax 1 (847) 742-3552 • info@suitmate.com



Domestic and International electrical
configurations available

Key Product Benefits

- Operates without heat
- Helps protect facilities from water damage
- Increases patron satisfaction
- Installs easily
- Constructed of stainless steel & durable plastic

Dryer Swimsuits in 3 Steps



GREENMACHINE

CLEAN. QUIET.
ALL ELECTRIC
PULLING AND
TENSIONING.



THE NEWLY DESIGNED DPT40E IS POWERED BY A REGENERATIVE ELECTRIC MOTOR, ELIMINATING THE NEED FOR DIESEL AND HYDRAULIC OIL.

FOR SALES INQUIRIES, PLEASE EMAIL US AT SALES@TSE-INTERNATIONAL.COM

U.S. PATENT NOS. 8,322,689 B2 AND 9,178,340 B2

TSE
INTERNATIONAL, INC.
1-800-825-2402