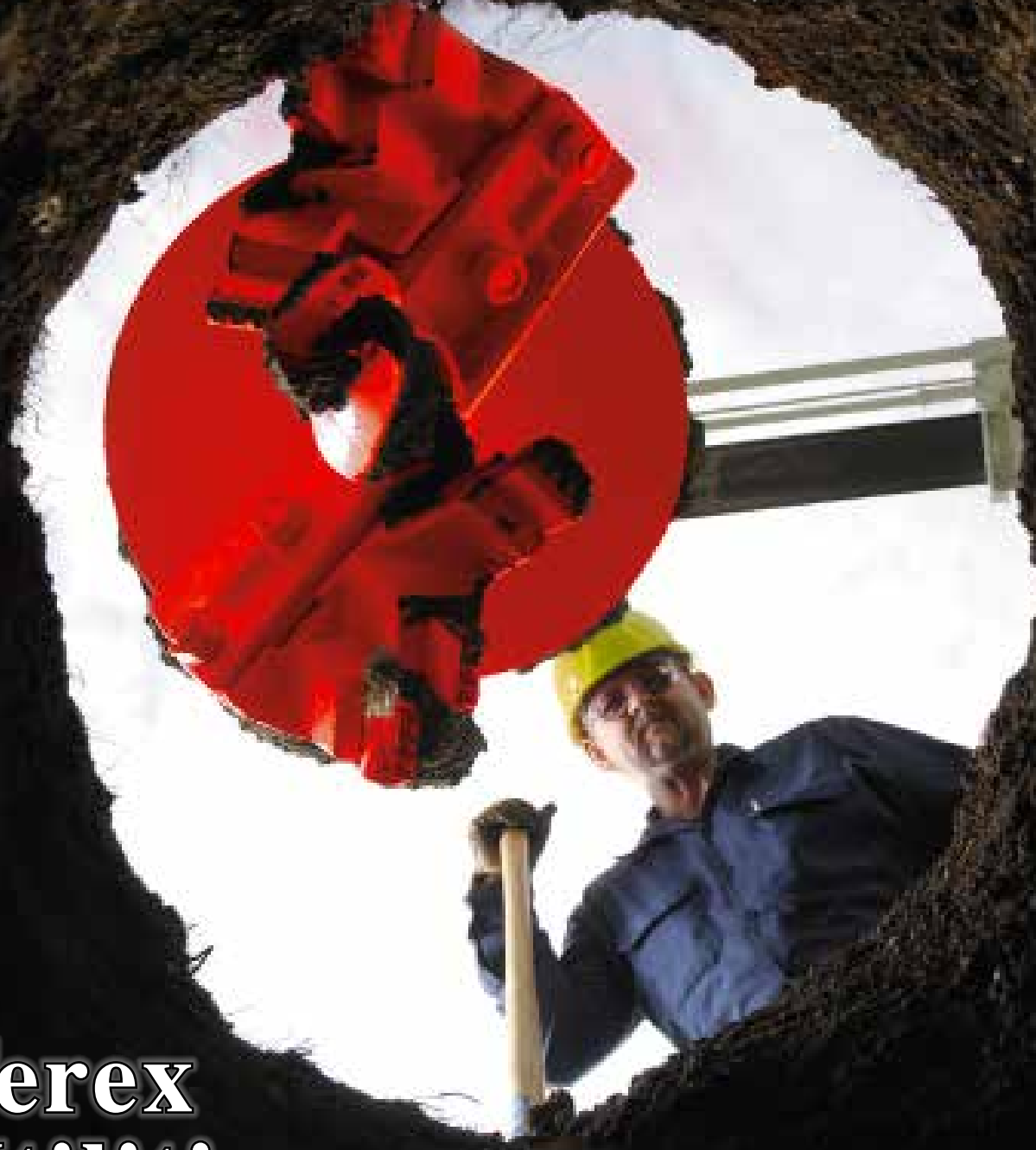


THE UTILITYSOURCE

March 2017

Products and Services for Today's Electric, Telecom, and CATV Utilities



Pg.14

**Terex
Utilities:**
Beyond Reliable
Equipment

**Vegetation
Management**
with The Davey Tree
Pg.10 Expert Company



Introducing

Utility Products by Shaver MFG

The Utility Pole Puller by Shaver MFG



Introducing the all-new Utility Pole Puller by Shaver Manufacturing. This revolutionary pole removing device saves you time and money by drastically reducing labor hours in the field. All you do is simply wrap the heavy duty chain or wire rope around the pole and you're ready to extract. The Utility Pole Puller quickly attaches to any skid steer or can be used with a utility truck body. With the Utility Pole Puller there is no need to drill holes around the post prior to removal, saving you 30 minutes per pole.

The newest product to Shaver's line up is the Sign Post Puller. Designed to operate using truck bed hydraulics, the Sign Post Puller features a cylinder offering a 32" stroke. Operating at 1000 PSI it comes standard with 3/8" flat faced quick couplers and will also operate on Skid Steer or Tractor hydraulics. The Sign Post Puller comes standard with a square tubing puller. Priced to sell, it's the perfect addition to any road crew's truck.

The Sign Post Puller by Shaver



For more information on Shaver's Utility Products or to find out where you can get yours please visit our website www.shavermfg.com or contact Andrew Tischer at 712-887-1125.

Shaver Manufacturing is a leading manufacturer of fencing and industrial equipment. We offer a full line of Post Drivers, Stump Grinders, Post Hole Diggers, Utility Products, and Extractors. Shaver Manufacturing is proud to offer one of the best warranties in the industry, and proudly produces all our equipment in the Heartland of America—Grættinger, IA.

PIONEER OF TOMORROW'S INNOVATIONS.

Solutions for electric utilities focusing on power delivery systems



INTERNATIONAL
UTILITY EQUIPMENT
EXPOSITION

See us at ICUEE 2017
Booth L316

History speaks for itself. Terex Utilities has a legacy of innovative solutions that have changed the industry — from the first hydraulic digger carrier to our recent launch of the Terex® Load Alert™ system. We provide game-changing solutions that we look for our customers and plan to continue working with the future Terex Utilities for You™ by listening and taking action. We are here to help solve your challenges and provide innovative, high-quality products and services that fit your needs.

www.terex.com/utilities



TEREX

WORKS FOR YOU.™

©2017 Terex Corporation. Terex, the Terex logo and Terex Utilities for You are trademarks of Terex Corporation. All other marks are the property of their respective owners.

PG 4	Industry News
PG 6	Company Profile: Shaver Manufacturing
PG 10	Vegetation Management: Q&A with The Davey Tree Expert Company
PG 14	Terex Utilities: Beyond Reliable Equipment
PG 18	Atlas Copco FleetLink Intelligent Telematics System Optimizes Fleet Management & Monitoring
PG 20	Milwaukee® Delivers First One-Handed Overhead Transmission Cutting Experience
PG 26	New Product News
PG 36	Ad Index

NATIONAL SALES
MANAGER

Hank Underwood
205-624-3796
george@handfmedia.net

EDITOR

Annie McGilvray
annie@handfmedia.net

CONTRIBUTING EDITOR

Brandon Greenhill
brandon@tipsmag.net

CREATIVE/WEB DIRECTOR

Jacklyn Greenhill
jacklyn@handfmedia.net

ADMINISTRATIVE
DIRECTOR

Steven Hobson
steven@handfmedia.net

CEO
Christy Hobson

PRESIDENT
Glen Hobson



Executive and Advertising Offices

PO Box 1568
Pelham, AL 35124
phone: 205-441-5591 fax: 205-624-3354
www.theutilitysource.net
glen@handfmedia.net

The Utility Source™ is published twelve times a year on a monthly basis by H&F Media Group, Inc. The Utility Source™ is distributed free to qualified subscribers. Non-qualified subscription rates are \$57.00 per year in the U.S. and Canada and \$84.00 per year for foreign subscribers (surface mail). U.S. Postage paid at Birmingham, Alabama and additional mailing offices.

The Utility Source™ is distributed to Power, Telcom and CATV Utilities and Utility Contractors throughout the USA. Publisher is not liable for all content (including editorial and illustrations provided by advertisers) of advertisements published and does not accept responsibility for any claims made against the publisher. It is the advertiser's or agency's responsibility to obtain appropriate releases on any item or individuals pictured in an advertisement. Reproduction of this magazine in whole or in part is prohibited without prior written permission from the publisher.

POSTMASTER: Send address changes to
H&F Media Group, Inc., P.O. Box 1568
Pelham, AL 35124
PRINTED IN THE USA

Get Cool!

Extend transformer life!

Increase transformer capacity up to 166%!

- expert technical assistance
- low sound levels
- energy-efficient motors
- large inventory
- one-piece cast aluminum blades
- galvanized or stainless steel guards

KRENZ-VENT
quality engineered, performance tested

DESIGNED BY LINEMEN Proven by Science



100% compliant, meets and exceeds all ASTM & ISO (ASTM F2075) leather protector glove standards

HIGH VOLTAGE
Protectors Mitten
Class 1-4

HIGH VOLTAGE
Protectors
Class 1-4

Fire/Water & Cut Resistant
(CATEGORY A-4)

WORK GLOVE
KEVLAR Lined
— with or without
Knit Cuff

WORK GLOVE
THINSULATE Lined
— with or without
Knit Cuff

10"

LOW VOLTAGE
Protectors Class 00/0

13"

Tailor by
ArcWear

Standard
WORK GLOVE

WORK GLOVE also available in
KEVLAR or THINSULATE Lined



Put the Power of Superior Grip and Protection in your Hands!

- Three styles of work gloves M, L, XL and XXL
- Low and High Voltage Five Finger Leather Protectors available in sizes: 8-8.5 through 12-12.5
- Contour & Bell Cut Protectors available in Class 1-4
- Three Finger Mitten sizes: 9-11
- FWR Cut Resistant (A4) Work Gloves
- ATP Ratings available A2 ratings only

Call: 877.271.0444

or order online at www.ThePowerGripz.com

Terex Utilities Holds Annual Sales Training Meeting



Terex Utilities team members from across the nation traveled to Omaha, Neb., for the company's annual sales training meeting the fourth week of January. While there, 74 of its employees spent time serving four local human service agencies in Omaha and Council Bluffs, Iowa.

Projects were facilitated by United Way of the Midlands, which included painting, organizing donations, and assembling care packages. All four local Omaha and Council Bluffs agencies provide shelter and/or meals for the homeless.

"Many people on out-of-town trips spend their free time in leisure activities, but not the employees of Terex Corporation," said Danielle Ohlman, Director, Volunteer Engagement, United Way of the Midlands. "During their annual meeting week in Omaha, dozens of them rolled up their sleeves and helped out at Omaha-area nonprofit agencies."

"At Terex, one of our core values is citizenship. While planning our annual sales meeting, we wanted to include activities that not only fostered team-building, but also gave team members the opportunity to volunteer," said Jim Lohan, VP Sales and Marketing, Terex Utilities.

www.Terex.com

Pelco Products, Inc. Promotes Kevin Hanke to IntelliCross Manager

Pelco Products, Inc. in Edmond, Oklahoma is pleased to announce the promotion of former Product Manager, Kevin Hanke. Kevin's new title is IntelliCross Manager.



As the IntelliCross Manager, Kevin will be dedicated to the overall sales growth, product development and training of Pelco's IntelliCross APS for the United States market. Not only will Kevin retain responsibility for the technical support of the IntelliCross, but he will also head up the nationwide sales management of the product line utilizing the Pelco Regional Sales Managers.

Kevin joined Pelco in 2014, in a technical sales role. A year later he was promoted to Product Manager.

Hanke has become an important point of contact for Pelco's distributors with the addition of the IntelliCross. His new role will continue market data gathering, aiding in strategic launch planning as well as carrying out product training and technical support to Pelco's Regional Sales Managers and customers.

Pelco Products, Inc. is an Oklahoma based, family-owned business specializing in the design and manufacture of traffic and utility products selling to all 50 states and multiple international markets.

www.pelcoinc.com

Elk River
Personal Fall Protection
P.O. Box 1770
Cullman, AL 35056-1770

800.633.3954

www.elkriver.com

MADE IN USA

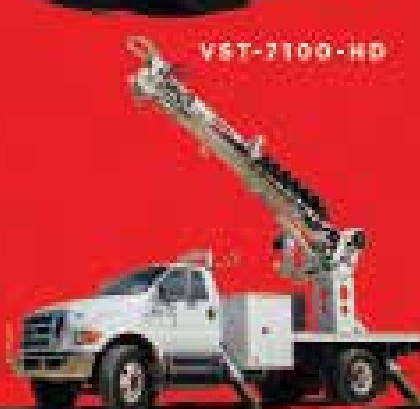
Elk River, Inc.
Personal Fall Protection
P.O. Box 1770 Cullman, AL 35056
(205) 335-1770



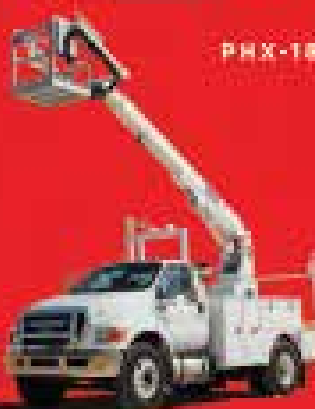
VST-2100-HD

PHX-180-1

SKYBIRD-T2151



THD DIGGER DERRICK



VTP-40-NE
CABLE PLACER



VANTEL-29-NE



TEL-29-NE

DEMAND BETTER. DEMAND VERSALIFT.



As the world's leading aerial lift manufacturer, Time Manufacturing has made aerial projects safer and more efficient for its customers. Since 1965, the VERSALIFT product line has grown to now include over 60 model choices - whether it be a 24' lift or one extending up to 210 feet, there is a VERSALIFT to get the job done.

For more information

contact
254-399-2100
www.VERSALIFT.com



Shaver Manufacturing is proud to be located in America's Heartland, and has been a leader in 3 point and skid steer attachments for 70 years. They started out making earthmoving equipment and hydraulic diggers, and then came their game changer. The Hydraulic Post Driver. A revolutionary new way for farmers, ranchers and fencers to set posts. Used on a 3 point platform, the Post Driver saved time and money for everyone that used it. After its release Shaver's founder and owner at the time Glen Shaver, was the talk of his small hometown in northwest Iowa. One afternoon while taking a break he was having coffee at the café on Main St in Graettinger and someone asked him how he ever came up with the idea, and Glen's response was "We have to make all this hard work easier", and so Shaver's motto was born, "Making Hard Work Easy". Since that day Shaver has been manufacturing attachments with the "working man" in mind. Taking what was once back breaking labor and making it easy. Originally Shaver's market was agriculture. Hydraulic Post Drivers, and diggers, but they soon expanded to other industries. Today, Shaver is still based in Graettinger, IA and produces a full line of 3 point and skid steer attachments for several industries.

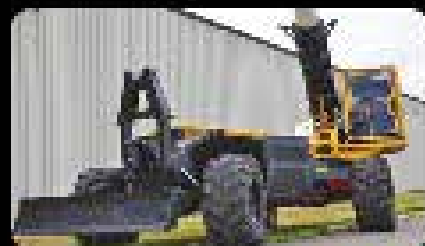
In 2007 Shaver was purchased by HCC, an Illinois based agricultural company known for being one of the country's foremost designers of combine reels and sieves. HCC made a few subtle changes to Shaver. One being hiring seasoned manufacturing plant manager Terry Roberts to oversee the day to day operations, and make improvements, where needed, to Shaver's manufacturing process. They also brought willingness, and the capital necessary for Shaver to expand their operation and bring their innovated products into other industries.

Shaver's latest innovation brings them into the Utilities Industry. The Utility Pole Puller is designed with their motto of "making hard work easy" in mind. The utility pole puller is a revolutionary new tool that takes all the work out of removing utility poles. Simply attach it to any skid steer or digger truck, wrap the chain or wire rope around the pole, and in 30 seconds a 60' utility pole is out of the ground. Pole Pullers have been around for years, but Shaver's is a little different than the rest. A little of two years an electric cooperative in northwest Iowa was struggling with their current pole puller. So they turned to Shaver.

After an electric cooperative in northwest Iowa spent two years struggling with their old pole puller, they turned to



MECHANICAL TRIMMER



RAYCO EXCLUSIVE FEATURES

- Compact, non-articulated design
- 3-mode steering, (front axle, 4-wheel, and crab steer)
- Machine levelling
- Comfortable operator cabin



CALL • 800.392.2686

VISIT • RAYCOMFG.COM

WE HAVE THE ROPE TO GET THE JOB DONE.




Buccaneer Rope
COMPANY
800-358-767 www.bucrope.com

Shaver's Bruce Masters, the Head of Product Development and Plant Manager, for help. Masters, who is known as an innovator, wanted to address the cooperative's main complaints. Specifically, they didn't want to drill holes around the poles anymore, they wanted less strokes to pull, and of course wanted it to take less time. With all of these things in mind, the Shaver team went to work.

Engineer John Steil, along with General Manager Terry Roberts, came up with a design and the Shaver fabrication team went to work. Within a few months a working prototype was presented to the cooperative, and all their criteria was met and exceeded with this new product, and so the Utility Pole Puller was born.

Currently Shaver works on a dealer and distributor network that spans the United States and Canada. Territory Manager Dan Reetz manages the dealers in a seven state territory in the Midwest. Dan Started for Shaver seven years ago. Before Dan, Shaver had run strictly on a distributor network, but the addition of some new products at the time, and Shaver's desire to grow prompted the idea of a territory manager that could not only find local dealers, but could also assist their distributors when needed.

Dan quickly, and successfully built a dealer network of well over 100 dealers, and with the addition of the Utility Pole Puller Shaver decided it was time to bring on a different kind rep. In February of 2016, Shaver hired a Distributor Sales Manager. Andrew Tischer.

Tischer focused his efforts on strengthening their brand awareness as well as product and sales training for company's distributors. He currently covers the United States and Canada.

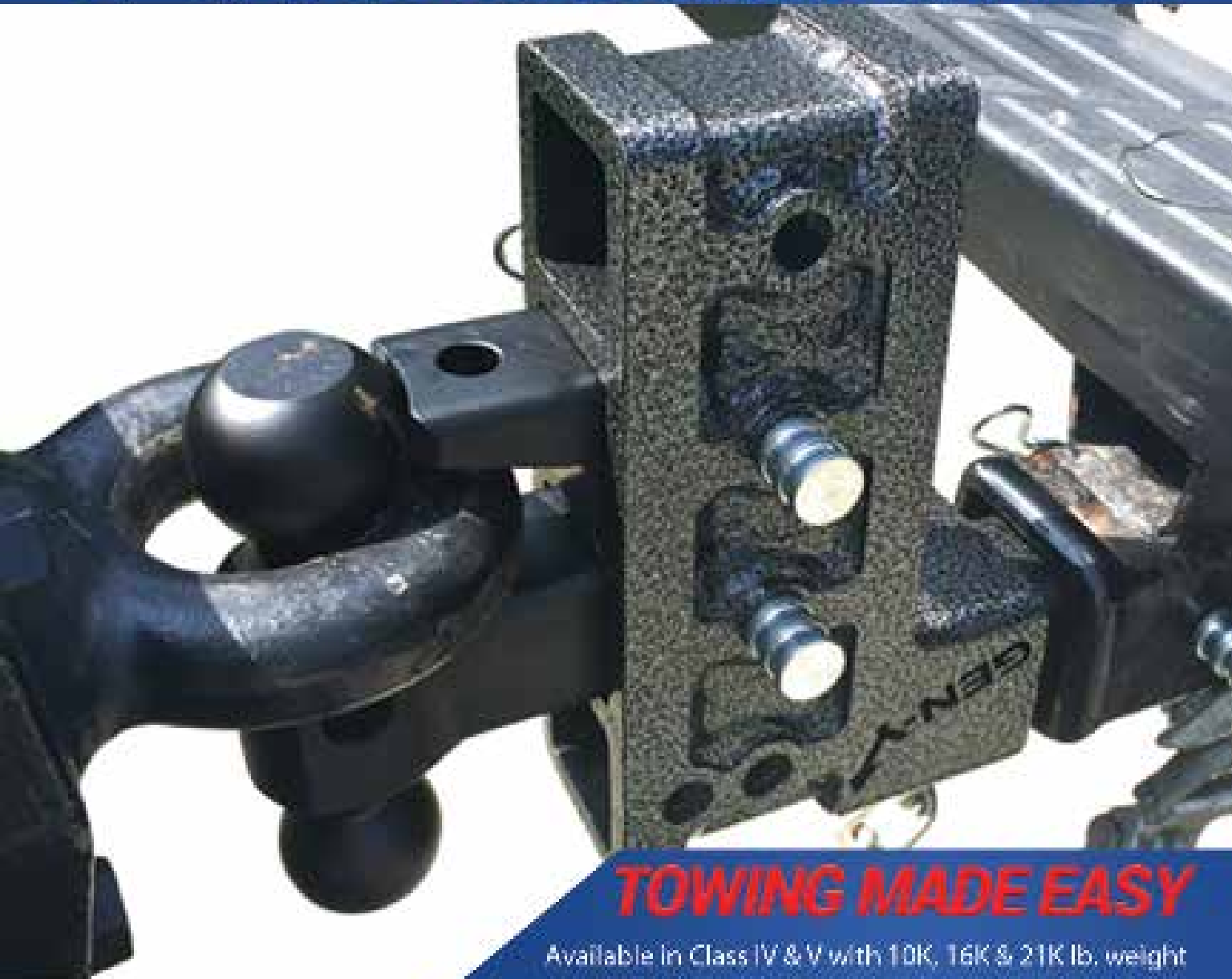
Today Shaver is as innovative as they were 70 years ago. From coming up with the first self-contained skid steer mounted hydraulic post driver to the Utility Pole puller. Shaver is always on the lookout for the next way to "Make Hard Work Easy".

Shaver's dedication to innovation, along with their commitment to their customer's success, and their solid belief that the best products are American made in America's Heartland has made them a leader in their industry.

www.shavermfg.com •



CAN ONE HITCH TAKE CARE OF ALL YOUR TOWING NEEDS?



TOWING MADE EASY

Available in Class IV & V with 10K, 16K & 21K lb. weight capacities. Safely and efficiently move any trailer without having to swap out hitches.

GEN-Y HITCH

BY GENY INDUSTRIES

574-218-6363

www.GenyHitch.com

Made in the USA

Vegetation Management



Q&A with The Davey Tree Expert Company

By Tracy Bennett

Tree contact with transmission and distribution lines is a leading cause of power outages, making vegetation management along right of way corridors an essential responsibility for utilities. Vegetation management, one of the largest maintenance tasks incurred by utilities, is further complicated by Federal requirements to protect endangered species. As new regulations are implemented, increasing minimum line clearance distances, utilities must either designate essential personnel to auxiliary tasks, or they can outsource vegetation management and right of way maintenance to a third party.



40 CAL/CM² ULTRALIGHT[®] by OTEX

37% LIGHTER THAN TRADITIONAL HRC4



V12 VENTILATION UNIT (OPTIONAL)

SPECS

Airflow: 35+ CFM

Battery Life: 6+ Hours

Added Weight: <1 lb

Durable Kydex Encasement

Completely covered by AR Fabric

Compliant: NFPA 70E, ASTM 1506-08, + OSHA 1910.269

Miller Safety Consultants, LTD

P.O. Box 386

Manassas, VA 20108

Tel: (703) 367-0404

Web: www.electricalsafetysupply.com

Terry VonConant, Vertical Market Manager for Terex Utilities, asked Tom Wolf of The Davey Tree Expert Company, Kent, Ohio, to share his perspective on the safety and productivity benefits for outsourcing vegetation maintenance tasks to a tree care expert. Wolf is VP National Sales, Utility Services Div. The Davey Tree Expert Company's more than 8,600 employees provide tree care, grounds maintenance and environmental consulting services for residential, utility, commercial and government markets throughout the U.S. and Canada. Davey has provided Proven Solutions for a Growing World since 1880 and has been employee-owned for 37 years. Terex Utilities manufactures aerial devices used for vegetation management, such as the over center Hi-Ranger™ XT PRO series and the articulating Telescopic Hi-Ranger LT40 aerial device.

Terex: What are the benefits for municipalities and utilities to outsource vegetation management and right of way maintenance to an arborist services company?

Davey Tree: Cities and utilities can achieve significant benefits when contracting vegetation services versus performing those activities in-house, as it reduces their risk, increases productivity, and represents cost savings. Vegetation management services companies provide enhanced safety programs tailored to vegetation specific activities. They also have access to new technology including monitoring equipment and software applications that collect and analyze data on vegetation growth. Achieving greater efficiencies reduces costs associated with the task. In addition, utilities experience direct cost benefits by eliminating capital expenses of specialized equipment and personnel expenses associated with dedicated crews. Outsourcing vegetation management gives utilities flexibility to control work loads.

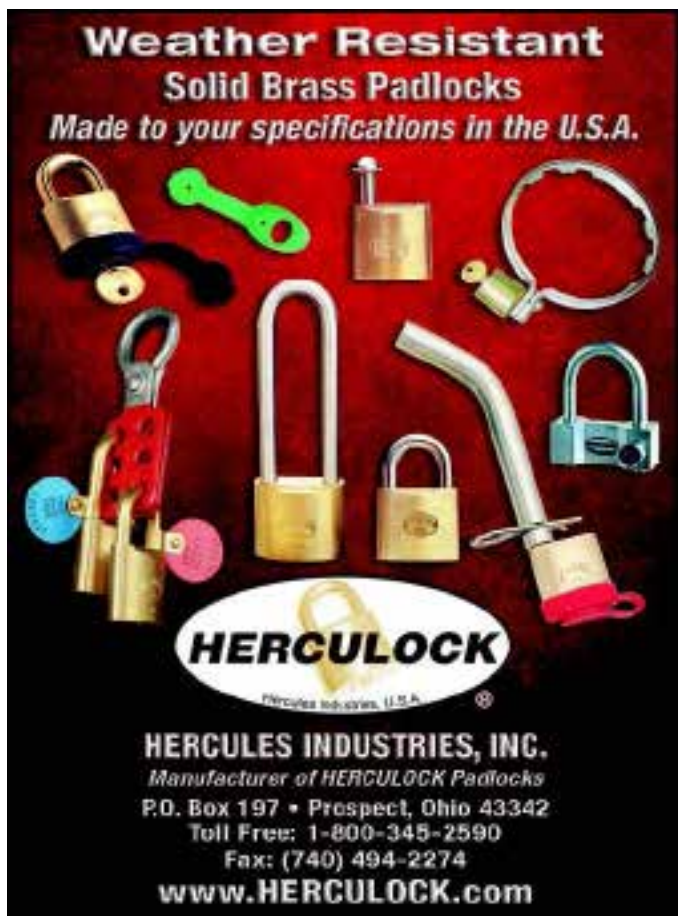
Terex: How do you balance the health and appearance of trees while achieving the clearances required for reliability and safety?

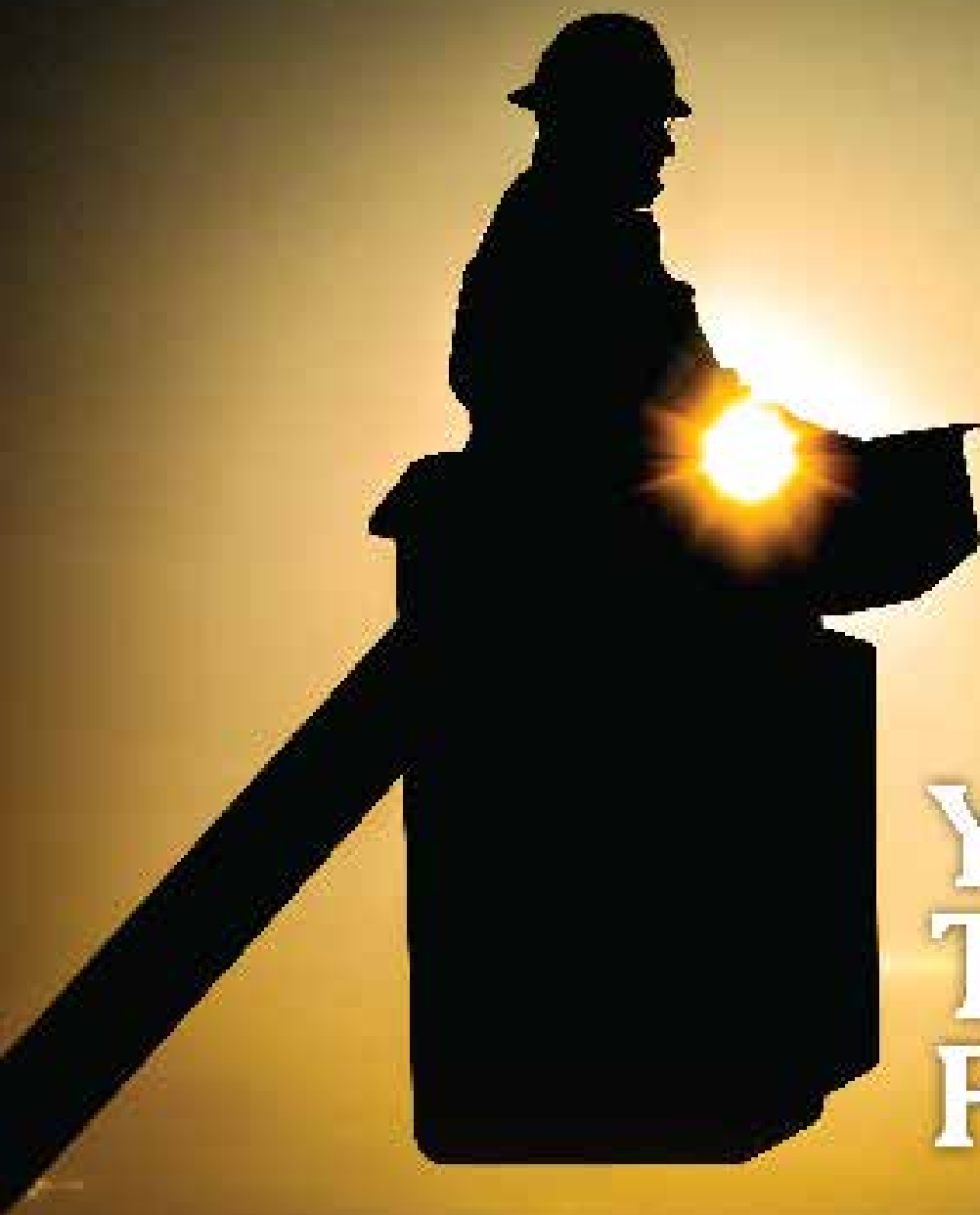
Davey Tree: A primary goal of most vegetation management programs is to achieve reliability and reduce outages by eliminating encroachment of the vegetation. Often the appearance of recently maintained vegetation will be less than aesthetically pleasing. Best practices techniques can reduce these concerns and when carried out with an established, reliable contractor, the municipality or utility is often insulated from direct scrutiny of the property owners. Removal of trees that will be disfigured by required pruning can be a viable option when coupled with a tree replacement program.

Terex: How is your fleet of aerial devices specially equipped for utility line clearance applications?

Davey Tree: In my opinion, modern aerial devices are better engineered and safer than ever. Line clearance operations demand equipment that is di-electrically isolated to reduce risks associated with working near isolated conductors. The ability to have hydraulic tool ports at the arborist's work platform greatly improves productivity. Furthermore, GPS connectivity for equipment in our industry has positively impacted productivity and revolutionized the way we manage our fleet.

www.terex.com





Your Trusted Partner.

Partnering with Ring Power gives you access to a vast range of jobsite-tough products to round out your fleet. Ring Power carries machines from dozens of manufacturers to ensure you always have access to the right tools for your job.

Short-term, long-term or rental-purchase options available.



TEREX
Cranes

ELLIOTT
TALL-BOOM CRANES

Schwanitz
Cranes

**NATIONAL
CRANE**
CORP.

Mantech
Cranes

TRAC SYSTEMS
Cranes

MANTIS
CRANES

1-844-766-RENT • Utility.RingPower.com



Terex Utilities worked closely with a customer to develop the Terex® Load Alert™ system for Hi-Ranger™ aerial devices, which monitors and alert crews and operators when an overload condition is detected.

Beyond Reliable Equipment: Developing Solutions for the Customer



Terex Utilities has 19 Service and Parts Centers across the nation. Pictured is the Waukesha Service Center team in Wisconsin.

Utility fleet managers face challenges daily. Utilities have demanding external customers that require their electricity to continually flow to keep their lights on. Internally, fleet managers strive to make smart investments on equipment and services to maintain a reliable fleet with minimal down-time and deliver a return on investment. Due to these demands, fleet managers want innovative, progressive solutions that support safe work practices, as well as reliable customer service and responsiveness throughout the life cycle of those units.

Utility equipment manufacturers that engage with fleet managers to develop innovative product concepts and help incorporate these concepts into

the crews' everyday work practices are crucial partnerships for utilities. Fleet managers must work through multiple scenarios when making equipment decisions. They not only look for the best value (not just price) but a whole suite of lifecycle solutions like reliable service and parts support, as well as operator and maintenance training.

Terex Utilities is a leading manufacturer of aerial devices, digger derricks and auger drills for the utility industry and offers service and support throughout North America. Since 1945, Terex Utilities has been delivering innovative solutions to the utility industry through strategic partnerships with customers. Most

recently, Terex Utilities was the first equipment provider in the industry to develop a load alert system for aerial devices that is geared to helping crews and operators by alerting them when they have reached maximum capacity. The company has also launched a new, patent-pending idle mitigation solution called HyPower™ IM, which adds to its innovative suite of hybrid offerings for utility work trucks.

TheTerex® Load Alert™ System

The Terex® Load Alert™ system was developed in response to market demand for new solutions to aid crews in the field. The system monitors and analyzes all of the elements that

contribute to the material handling capabilities of an aerial device. When the system detects an overload condition, visual and audio alarms are activated at the truck to alert ground crews and at the boom tip to alert the operator. In addition, fleet managers can receive wireless notifications via text or email so they have the ability to manage their equipment. In fact, other functional areas can receive notices as well. For instance, safety directors could be notified to help identify training opportunities.

"Terex worked closely with our customer to develop this new system. This feature came to reality as a response to the utility company's request for technology solutions to aid their crews," said Jim Lohan, Vice President of Sales and Marketing. "We designed the system to be intuitive and easy for operators to understand."

"It is important to note that it is the operator's responsibility to always be aware of the loads they are lifting and stay within the operating limits of the load chart or platform capacity decal, even with the Terex Load Alert system installed on the aerial device," added Lohan.

Newest Terex Hybrid Technology – HyPower™ IM

Interest in Hybrid technology continues with electric utilities. The demand increased when Edison Electric Institute (EEI) launched its electrification fleet initiative – a commitment from EEI member utilities to invest 5 percent of their annual fleet budgets on vehicle electrification and technologies. Additionally, other



utilities have defined their own initiatives working with entities such as the Clean Cities program through the United States Department of Energy. The underlying goals of these utilities are to save fuel, reduce exhaust emissions and reduce noise in the work environment.

Terex launched the first HyPower™ Hybrid EPTO utility truck back in 2009. Since then, the company has offered full hybrid EPTO systems for aerial operation on the worksite. The HyPower system was one of the first hybrid systems designed specifically for worksite benefits. The aerial functions operate off of the battery powered PTO, with an option for cab comfort, while the engine powers road travel. The system also offers

exportable power from its battery system.

HyPower IM, an idle mitigation and cab comfort solution, provides similar benefits as the original HyPower Hybrid Systems, including reduced fuel usage and reduced exhaust emissions, but at a lower price point. The engine only runs when hydraulic power is needed to move the boom. The battery system powers all other functions that are on when the unit is stationary, greatly reducing the time the engine runs when parked.

"We listened to fleet and operations managers when designing HyPower IM to make it efficient and operator-friendly," said Tyler Henderson, Product Development Manager.



Terex Utilities launched HyPower™ IM as a lower cost, lighter weight solution when compared to other HyPower Hybrid solutions.

HyPower IM automatically switches from battery-stored power when the truck is in idling mode to engine-supplied power when hydraulic controls are engaged. Aerial device operators do not have to remember to engage the system to gain the benefit of utilizing the battery power system as it is integrated into the unit. In addition, the truck cab can be heated or cooled using the vehicle's factory vents, without the engine running.

HyPower IM can be ordered with new Terex aerial devices or retrofitted on existing fleets using Terex devices. It is currently available for Class 5 Chassis, such as Ford and Dodge trucks, as well as medium duty chassis equipped with Terex® Hi-Ranger™ telescopic aerial devices, such as the

LT, LTM and TL series aerial devices.

HyPower IM is a 48v Lithium ion battery system that charges from either a standard 120V plug in or the 12v chassis engine alternator during road travel. HyPower IM uses fewer, high efficiency batteries versus other hybrid systems which decreases the overall vehicle weight, providing additional payload capacity, while still allowing for maximum fuel efficiency for customers.

Beyond the Sale: Terex Parts and Service

Terex currently has 19 Service and Parts Centers across the United States and two parts distribution warehouses. Additional equipment and service coverage is offered through Terex's

strong partnerships with dealers and rental partners throughout North America. Wajax and Commercial Equipment sell and provide equipment and service support throughout Canada. J.A. Kiley is a dealer in New England and Ring Power is located in Florida. Terex Utility rental partners include NESCO, Scott PowerLine and Utility One Source.

"Terex Utilities Service Centers are strategically located based on customer locations and equipment population," said Scott Ashley, Field Service Operations Manager. "Our mobile technician fleet keeps us close to our customers, thereby reducing response times and equipment downtime. Our goal is to provide same-day response on all emergency requests."

"Terex is and will continue to be here for our customers. We have strong and responsive support from our dealers and rental partners and continue to offer trainings and schools to keep our customers updated and to become familiar with our equipment," added Lohan. "Our history speaks for itself – both in innovation and continuous improvement. We are the industry veteran and plan to continue well into the future."

www.Terex.com •

About Terex:

Terex Corporation is a global manufacturer of lifting and material processing products and services delivering lifecycle solutions that maximize customer return on investment. Major Terex brands include Terex, Genie, Powerscreen and Demag. Terex solutions serve a broad range of industries, including construction, infrastructure, manufacturing, shipping, transportation, refining, energy, utilities, quarrying and mining. Terex offers financial products and services to assist in the acquisition of Terex equipment through Terex Financial Services. More information about Terex is available on its website: www.Terex.com, and on its LinkedIn page -- www.linkedin.com/company/terex and Facebook page -- www.facebook.com/TerexCorporation.

Atlas Copco FleetLink Intelligent Telematics System Optimizes Fleet Management and Monitoring



Atlas Copco's intelligent telematics system, FleetLink, provides road construction contractors with a convenient and efficient tool to monitor and manage their equipment fleet. The system allows users to optimize fleet usage, reduce maintenance costs and save time and money.

"We want to provide our customers with an easy way to monitor and track their fleet and operations," said Tim Hoffman, Atlas Copco Road Construction Equipment product manager. "Our innovative FleetLink system takes efficiency and fleet management to a new level to enhance overall productivity."

Atlas Copco offers FleetLink in two packages — FleetLink for small pavers and FleetLink Advanced for use with large soil and asphalt rollers as well as large highway class pavers. Both packages come standard with a new Atlas Copco machine purchase and are free for customers during the first three years. Each package includes the hardware module, access to an online fleet management portal, and a monthly connection package subscription,

which customers can extend after the three years.

FleetLink is used on Atlas Copco small pavers, including the F1200C, and is compatible with other manufacturers' equipment. The system records the location of the equipment and working hours. It also includes a tool to set one or more geo-fences for a single machine or a group of machines. The geo-fence program automatically sends a message to a pre-defined email address when a machine enters or leaves the designated area, allowing customers to track their machines even when not logged in on the webpage.

Contractors can easily set up maintenance schedules by using the FleetLink system. The tool emails a designated account when a machine is close to its next service due date. In the maintenance overview of the advanced module, users can see the service status of every machine in their fleet. This helps plan equipment servicing efficiently and proactively.

FleetLink Advanced is used on Atlas Copco soil rollers ranging from the

CA1500 to the CA6500, asphalt rollers CC2200 to the CC6200 as well as large highway class pavers such as the F800T, F800W, F1000T and F1000W. This system includes all the features and functions of FleetLink but also monitors each machine's parameters and performance every minute. Having this data available optimizes fleet usage, reduces waste and saves time and money. For instance, fleet managers can see if a piece of equipment is standing idle at a time when they would expect it to be in use. They can then talk to the operator to determine the cause and find a solution.

The Advanced system allows for further analysis and checks the equipment performance in customizable time-frames. Users can track the machine's coolant temperature, travel time, fuel consumption and load factor, improving performance. FleetLink Advanced users can export and save all data for further analysis.

www.atlascopco.us/en-us •

Rugged Dependability

STANDARD IN EVERY MACHINE WE BUILD!

Hogg & Davis has been proudly
manufacturing utility line equipment
for more than half a century.



Our trusted products are part
of the fleets and tool cribs of
nearly every investor-owned
power and communications
company in the United States
and beyond.



HOGG & DAVIS, Inc.

HOGG & DAVIS, Inc.

3800 EAGLE LOOP • EDELL, OR 97044

TEL 541.354.1001 • FAX 541.354.1080

WWW.HOGGDAVIS.COM

Milwaukee® Delivers First One-Handed Overhead Transmission Cutting Experience



Milwaukee Tool continues to expand its line of FORCE LOGIC™ High Force Tools for Utility Linemen with the introduction of the M18™ FORCE LOGIC™ 9T Utility Cutter. A self-latching jaw design enables opening with just one hand, enhancing alignment while delivering easiest operation with Class 3 Gloves. The wire automatically closes the jaw, providing hands-free jaw closure and the easiest mid-span cuts.

“Hand ratchet tools put strain on the body and are difficult to use. Cordless transmission cutters are large, challenging to align, and have a latch-style cutting head that is extremely awkward to close around the wire during mid-span cuts. This ultimately makes set-up a three-handed operation,” said Paige Bovard, Group

Manager of Product Management for Milwaukee Tool. “Our self-latching design enables users to open the jaw with just one hand for easier alignment straight to the wire. During those mid-span cuts, the wire automatically closes the jaw so the user doesn’t need to juggle with pins or awkward reaching. Fully balanced and under 12lbs, this new solution delivers the best control for Linemen.”

The fastest transmission cutter on the market, the new 9T Utility Cutter makes up to 60% faster cuts in 1590 Falcon ACSR. Equipped with an M18™ RED LITHIUM™ XC 5.0 battery, it can deliver more than 200 cuts per charge.

As a complete problem-solving solution, the 9T Utility Cutter is compatible with the digital platform,

One Key™, which allows the user to sync the tool wirelessly with their mobile device or desktop. Users will be able to monitor tool inventory, including tracking the location of missing tools and receiving alerts when lost tools are found. Furthermore, ONE-KEY™** will assist in tracking the utilization and service interval of the tools to maximize uptime and keep inventory lean.

From the power plant, through transmission and distribution, it is Milwaukee’s goal to improve reliability and productivity for Linemen by offering cordless solutions on one battery platform that will replace the heavy traditional corded, gas and truck hydraulic solutions used today. With a base of tools on the M18™ system already used by Linemen, the launch



Complete
Solutions
Commitment
Confidence

You wear a hard hat, have the courage and commitment to take on the biggest challenges. The job can be dangerous and we know you depend on not just your equipment, but on a company offering complete solutions including safety evaluations, product assistance, training, and expertise. A customer-focused company that has your back and gives you the confidence to do your job safely. MSA is that company.

To learn more about MSA's complete line of safety solutions or request a FREE, no obligation safety evaluation,

call MSAsafety.com/safetysolutions

WE KNOW WHAT'S AT STAKE.

©2011 MSA Safety Company

MSA

The Safety Company



of game-changing 6T Utility Cutters in 2015, the introduction of a 12T Utility Crimper, and three uniquely innovative Utility Cable Cutting solutions this year, Milwaukee is committed to making this goal a reality.

* FORCE LOGIC™ is engineered to not only improve upon, but fundamentally change the way high-force tools are used in the field. Through thoughtful

design focused on workflow, each tool simplifies a complicated process to deliver the best user experience of its kind and the smartest way to work.

**ONE-KEY™ is the first digital platform for tools and equipment. By integrating industry-leading tool electronics with a custom-built cloud based program, ONE-KEY™ provides a new level of control and access to information that revolutionizes the way work gets done. The ability to customize, track, and manage through ONE-KEY™ fundamentally changes the way users interact with their tools.



Specifications:

M18™ FORCE LOGIC™ 9T Utility Cutter (2777-21)

- Hydraulic Output Force: 9 Tons
- Cut Capacity: up to 1590 Falcon ACSR
- Length: 16.75"
- Weight: 11.75 lbs

Includes M18™ FORCE LOGIC™ 1590 ACSR Cutter, Side Handle, M18™ REDLITHIUM™ XC5.0 Extended Capacity Battery Pack, M18™ Lithium-Ion AC/DC Wall and Vehicle Charger, Milwaukee Carabineer, Manual, Utility Bag.

www.milwaukeetool.com

CLEANMOTION
MORE WITH LESS

PANTHER CARRIERS

Suited for your industry.

INNOVATIVE

- ✓ Innovative chassis design provides easy implement installation
- ✓ Improved 30PS certification allows optimal payload
- ✓ State-of-the-art cab design provides comfort and visibility
- ✓ CLEAN MOTION - the first tier 4 carrier line-up in the industry
- ✓ Microcontroller technology provides up to 20% in fuel savings

The PANTHER made carrier from PRIMO™ breaks solely with long life payload. Engineered for increased efficiency, the PANTHER provides truly unparalleled, truly optimal track performance, operator safety and reduced maintenance. All this and the ability to customize your vehicle according to your job needs. Contact us to find out how PRIMO™'s PANTHERS fit your needs for both distribution and transmission projects.

PRIMO™ Inc. - North America
P.O. Box 1000
www.primo.com

PowerBully

Track Carriers

PowerBully track carriers.

Strong and rugged for challenging tasks.



PowerBully offers the perfect mobile base for digger derricks, cranes, man lifts, bucket booms and dump bodies.

- Versatility of application
- Fully rugged for challenging tasks
- Test load capacities of up to 35,000 lbs
- Sensitive to the environment
- Low ground pressure
- Small footprint on the ground

BLUEIQ

Technology

www.powerbully.com

INSPIRING EXCELLENCE IN UTILITY FLEET PROFESSIONALS

**JUNE 4-7
2017**

**WILLIAMSBURG LODGE
& CONFERENCE CENTER
WILLIAMSBURG, VIRGINIA**

EUFMC

WILLIAMSBURG, VA

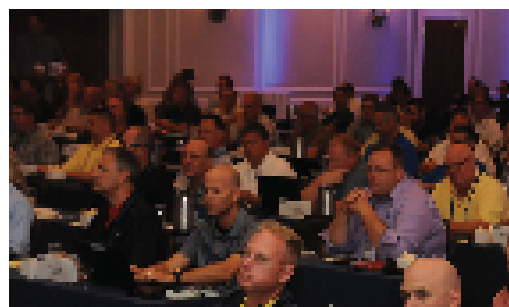
EST. 1953

**REGISTER
TODAY!**

**757.220.1795
eufmc.com**

Join **fleet professionals** from investor-owned electric utilities, electric cooperatives and electrical contractors from across the U.S. and Canada at the industry's premier educational event featuring:

- Presentations by industry experts, manufacturers and fleets
- Roundtables where fleet professionals and representatives from manufacturers and service providers share best practices
- A drive through utility equipment demonstration and an exhibition of the latest equipment and services for utility fleets



PLATINUM SPONSORS



Shoo-pin™

Flex-Cable Adapters

PT-FX Series adapters are designed to terminate high-strand flex-cable (locomotive, mining, welding) to machinery, panels, and transformers. The pins fit mechanical set-screw type connectors and are sized for the current carrying capacity of the cable. These adapters feature the Greaves flared Shoo-in™ barrel-opening design for easy cable insertion. Insulating covers are provided.

Wherever flex-cable terminates in a set-screw lug:

- Telecommunications
- Construction Sites
- Drilling Platforms
- Theme Parks
- Locomotive
- Welding
- Marine
- Mining



GREAVES

www.greaves-usa.com

800-243-1130



German Crane Manufacturer Liebherr Returns to the Rough-Terrain Market

Respected German crane manufacturer Liebherr has re-entered the rough-terrain market. Knowing their reputation for quality, and impressed by the new line's capabilities and robust safety features, the ALL Family of Companies has pre-ordered 15 machines. The LRT 1090-2.1 is a 100-UST full power boom crane, set to debut at the 2017 CONEXPO-CON/AGG show (March 7–11, Las Vegas).

The LRT 1090-2.1 blends the latest in safety with the reliability and innovation for which Liebherr is known. The manufacturer's exclusive VarioBase® outrigger monitoring system enables each support to be extended to a different length while automatically delivering support status information to the operator. It's ideal for maintaining safety and flexibility in the tight spaces often encountered in today's urban and industrial jobsites. It also allows for greater capacity when lifting over the supports.

"With VarioBase, ALL can do what used to be impossible," said Hutton Strader, business development specialist for ALL. "Imagine having the outriggers fully retracted on one side and fully extended on the other, while still having the crane allow for full capacity when it swings to the extended side. The LRT 1090-2.1 can do that."

www.allcrane.com •

Mi-T-M Releases New Diesel Compressor/Generator Combo Unit

Mi-T-M Corporation announces the release of the new diesel 30-gallon air compressor/generator combination unit. With the convenience of two machines in one, the new air compressor/generator unit is perfect for industrial applications that require electrical power and air.

The new air compressor/generator features a 9.1 HP Kohler KD420 diesel overhead valve engine with electric start and glow plugs for easy starting in cold temperatures. The unit includes a 3000 watt generator and two stage compressor with a powder coated ASME coded 30-gallon receiver tank.

With a brushless alternator and a total harmonic distortion of less than 6%, the powerful generator features 100% copper windings, comes standard with 120 volt and 240 volt receptacles and provides power for industrial and contractor needs.

The built-in air compressor features a splash lubricated compressor pump, large canister intake filter, regulator and two gauges for tank and outlet pressure and a 16 1/2 inch fly wheel. It's built to provide high capacity air flow to power a multitude of air tools.

www.mitm.com •



VISIT US IN THE
GOLD LOT: BOOTH
#4772

AUGERS
DRIVES
WEAR PARTS

CONSTRUCTION
Aggregate Mining
Utility Agriculture

Exhibitor at
IBS | INTERIOR DESIGN
SOLUTIONS

800.599.0211 | Fax 800.915.6904

www.pengoattachments.com

pengosales@pengoattachments.com

Copyright Pengo Corporation 2017.

A New Line of Multi-Bit Screwdrivers & Multi-Nut Drivers by Klein Tools

Klein Tools introduces a new line of multi-bit screwdrivers and exclusive multi-nut drivers designed to increase productivity and save space in a tool belt or bag. Klein Tools' research shows electricians want to do more with fewer tools and these multi-bit screwdrivers and multi-nut drivers do just that.

Multi-Nut Drivers

Klein's exclusive multi-nut drivers come in two models with

multiple interchangeable hex sizes. The heavy-duty shafts and cushion-grip handles exceed the torque performance of regular nut drivers.

- 6-in-1 Multi-Nut Driver
- 5-in-1 Multi-Nut Driver

15-in-1 Multi-Bit Screwdrivers

This multi-bit screwdriver features a fixed shaft with a 1/4" nut driver and internal storage in the cushion-grip handle for 14 different screwdriver bits. It is available in three models:

- 15-in-1 Classic Multi-Bit Screwdriver
- 15-in-1 Tamperproof Multi-Bit Screwdriver
- 15-in-1 HVAC Multi-Bit Screwdriver

6-in-1 Ratcheting Stubby Screwdriver

The compact design of the 6-in-1 ratcheting stubby screwdriver makes it easier to work in confined spaces, while the ratcheting mechanism allows users to work faster and with more efficiency.

- 6-in-1 Ratcheting Stubby Screwdriver (standard bits)
- 6-in-1 Ratcheting Stubby Screwdriver (square recess bits)

www.kleintools.com/drivers



The Ultimate Cargo Retrieval System.

CARGO EASE.

Thinking Inside The Box

Cargo Ease Fleet Design and custom slide division is an important part of what makes Cargo Ease INC. a premier manufacturer in the industry. Our ability to help design and manufacture custom sizes for various fleets in North America is second to none. High capacity slides holding up to 3000lbs along options such as our patented safety break system is what set us apart from the rest of the manufacturers that just don't have features such as these. Whether you need sliding tie downs, folding side rails, custom size slides or our award winning brake or ramp systems, Cargo Ease has what is needed to make your slide standout from the rest.

Save time by quickly loading, transporting and accessing your safely stored equipment from our custom industry leading water resistant aluminum frame lockers. These are also equipped with durable composite top decking, along with automotive grade carpet interiors. Join the assembly of satisfied fleets that have already been outfitted with the most durable and dependable product on the market.

www.cargo-ease.com

905-768-2650
info@cargo-ease.com

PROUDLY
MADE IN THE USA



QUALITY. STRENGTH. PRECISION.

That's what makes every drilling tool
Jeffrey Machine manufactures
the best in the industry.



**JEFFREY
MACHINE INC**
DRIVEN BY PRECISION

3841 Industrial Drive • Birmingham, AL 35217
205.841.8500 • JeffreyMachine.com

The New DDPM-40 DoubleVision™ Dual Display Phasing Voltmeter



HD Electric Company, a Textron Inc. company, continues to drive innovation with the new DoubleVision™ Dual Display Phasing Voltmeter. The DDPM-40 is a compact, high accuracy wireless voltmeter and phasing set with capacitive test point mode and peak hold capability. The DDPM-40 will show the leading or lagging phase as well as the phase angle during wireless phasing operations.

The DDPM-40 measures voltage from 5V to 43kV and can be used in both overhead and underground applications. The DDPM-40 is accurate and repeatable to within 1 percent. The voltage is displayed on the two large bright LED displays that are synchronized wirelessly to make voltage measurements and phase identification easy, especially when working over a distance across switches. The DDPM-40 has a single button interface that controls all modes including: line to line measurements; line to ground measurements; capacitive test point; and real time & peak hold reporting.

The wireless phasing voltmeter is lightweight and its weather-resistant construction is ideal for use in tight work environments with minimum approach distances or with storm duty during disaster relief.

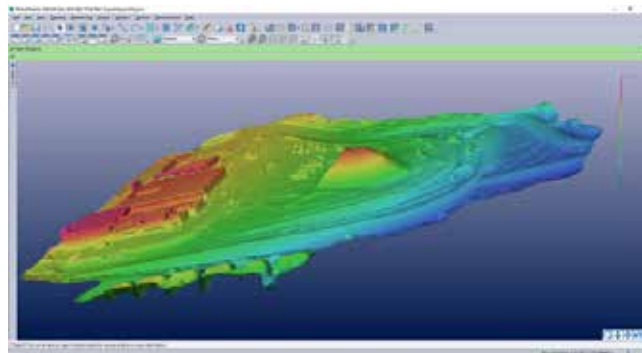
www.HDElectricCompany.com •

Cree Announces 25 New LED Bulbs

Cree, Inc. announces a completely new portfolio of next generation LED bulbs aimed at delivering better light experiences for consumers. The new bulb portfolio consists of 25 new products, offering better light quality, better dimming, better lifetime, better warranty and better pricing to deliver on the true promise of LED technology to make lighting better than it was before.

“Cree is committed to innovation and unlocking the true potential of LED technology,” said Betty Noonan, Cree chief marketing officer and general manager, consumer lighting. “Many new LED products fail to live up to the promise of LED technology; shouldn’t you choose a better bulb when it will live in your house

Eos Systems Inc. Introduces New Photogrammetry Software



Eos Systems Inc. has introduced new photogrammetry software optimized specifically for photographs taken with drones or unmanned aerial systems (UAS).

The new PhotoModeler UAS 2016 software creates 3D models, measurements, and maps from photographs taken with ordinary cameras built-in or mounted on drones. It includes numerous features for optimized operation with drone photos including post processing kinematics (PPK), volume objects, full geographic coordinate systems support, multispectral image support and control point assist. Eos Systems will be showing the new PhotoModeler UAS product at the Commercial UAV Expo in Las Vegas, Oct. 31 to Nov. 2, 2016 and will offer the new software at \$2275, 35% off the normal price, from November 1 to November 30, 2016.

The new version of PhotoModeler is ideally suited for drone photogrammetry applications including surveying, ground contouring, surface model creation, stock pile volume measurement, mining and mine reclamation, environmental analysis, slope analysis, forensic analysis, construction, and agricultural crop analysis. New applications for drone photogrammetry are developed monthly. Eos PhotoModeler was introduced 23 years ago and has become one of the leading photogrammetric software platforms with a wide range of users in fields such as architecture, engineering, surveying, research, manufacturing and forensics.

www.photomodeler.com •

for decades? Cree believes it’s now more important than ever to give consumers a better choice.”

“The Home Depot continues to offer the latest innovations in LED lighting, as can be seen with this new portfolio of Cree® LED bulbs. Our customers are looking for a high quality LED lighting experience that combines the latest technology with the benefits of energy savings and durability LEDs are known for,” said Joey Corona, Merchant, The Home Depot.

www.creebulb.com •



A NEW GENERATION OF CRANE

Visit us at
Booth #3411

**THE
WORK
TRUCK
SHOW.**

Venturo service cranes will be reaching new heights in 2017. With the addition of van cranes, enclosed service body cranes, new designs, new upfit options and added features on existing cranes, Venco Venturo Industries will be innovating like never before.

Stay tuned throughout 2017 for new and exciting changes with Venturo service cranes!



**VENCO
VENTURO**
INDUSTRIES LLC

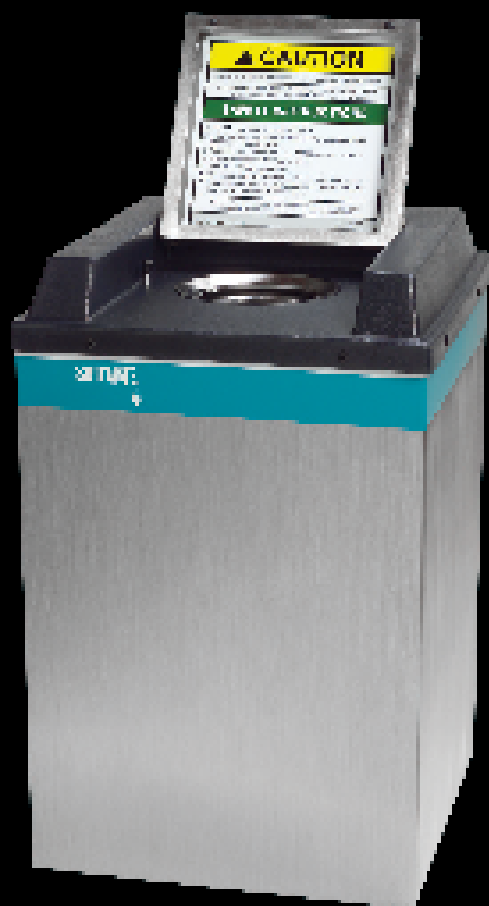


12110 Best Place | Cincinnati, Ohio 45241
800-226-2238 | VENTURO.COM

SUITMATE®

Swimsuit Water Extractor

What's your
locker room missing?



For additional information visit
www.suitmate.com

Manufactured by Fetherer Corporation
888 Main St. Olney, P.O. Box 88 • South Plainfield, NJ 07080 • USA
1-800-555-3355 • Fax 1-847-742-3550 • info@suitmate.com

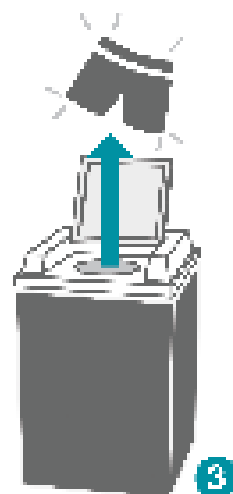
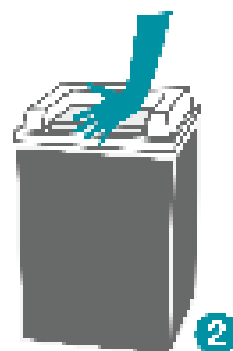
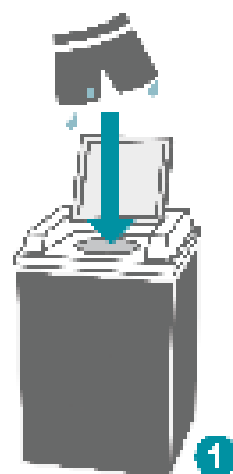


Domestic and International electrical
configurations available

Key Product Benefits

- Operates without heat
- Helps protect facilities from water damage
- Increases patron satisfaction
- Installs easily
- Constructed of stainless steel & durable plastic

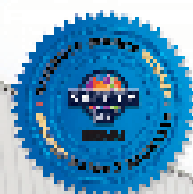
Dry Swimsuits in 3 Steps



Malta Dynamics, America's Fastest Growing Fall Protection Company, presents the world's most innovative mobile fall protection system.

THE GRABBER®

The Grabber® Mobile Fall Protection System X1250 picks up where the X1240 leaves off by providing more height and reach with a 5' telescoping mast with a single user anchor point. The Grabber® meets OSHA fall protection codes and ANSI Z359.6 design requirements for fall arrest systems, and has been validated by an independent 3rd party ISO 17025 testing laboratory. The versatile Grabber® is designed to be used in either fall arrest or fall restraint and features a one-of-a-kind adjustable mast that can be positioned anywhere between 2' and the unprecedented maximum height of 34'.



**Highway
Rated**
National
Inventory # 10



SCAN this QR code,
electronically, and learn
about this product
on your mobile device.



Visit us online at
the most 100 products
www.MaltaDynamics.com



MALTA DYNAMICS

MaltaDynamics.com // (800) 494-1840

Visit us online or give us a call today to request our catalog.

Tell the masses what your company does and how it all started.




Contact us to be featured for a company profile in our next issue!

www.theutilitysource.net/advertising

30,000th

NOBODY SAID IT WOULD BE EASY.

UNTIL NOW.



Rough-in an entire
suite using one cart

Transport up to two 1000'
spools and one 250' coil
of MC Cable (sold as shown)

Won't tip over

MC CART™

Product #:
MC300

iTOOLco.

INNOVATIVE TOOLS FOR PROFESSIONAL ELECTRICIANS & CONTRACTORS

iTOOLco.com 865-670-3713

Company	Pg.	Website
Asher	26	www.alasher.com
Buccaneer Rope	8	www.bucrope.com
Cargo Ease	28	www.cargo-ease.com
Elk River	4	www.elkriver.com
EUFMC	24	www.eufmc.com
EZ STAK	IBC	www.EZSTAK.com
Geny Hitch	9	www.genyhitch.com
Greaves	25	www.greaves-usa.com
Herculock	12	www.herculock.com
Hogg & Davis	19	www.hoggdavis.com
iToolCo	35	www.itoolco.com
Jeffrey Machine	29	www.jeffreymachine.com
Krenz Vent	2	www.krenzvent.com
Malta Dynamics	33	www.maltadynamics.com
Miller Safety	11	www.millersafetyltd.com
Morooka	36	www.morookacarriers.com
MSA Safety	21	www.msasafety.com
Pengo	27	www.pengo.com
Powerbully	23	www.powerbully.com
Prinoth	22	www.prinoth.com
Rayco	7	www.raycomfg.com
Regscan	26	www.regscan.com
Ring Power	13	www.utility.ringpower.com
Shaver Mfg	IFC	www.shavermfg.com
Suitemate	32	www.suitemat.com
Terex	1	www.terex.com/utilities
The Power Gripz	3	www.thepowergripz.com
Time Versalift	5	www.versalift.com
TSE	BC	www.tse-international.com
Venco Venturo	31	www.venturo.com

MOROOKA

KEEPING AMERICA ON TRACK

**PRODUCT ATTACHMENT
APPLICATIONS:**

- Digger Derricks
- Field Service Equipment
- Telescopic Buckets
- Boom Cranes
- Personnel Carrier

MADE IN THE USA



Visit us at
Booth #2883
in the Gold Lot

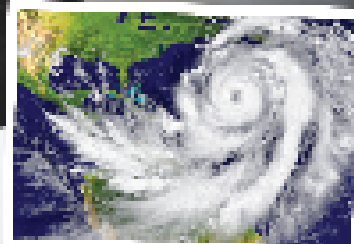
To locate a dealer near you, call 877-667-6652
or visit us at morookacarriers.com





CONSULT, CUSTOMIZE, REPEAT

EZ STAK Delivers Mobile Workspace to ComEd Ahead of Hurricane Season



June 1st marks the beginning of hurricane season in the Atlantic. Growing and event season for utilities like ComEd means that a full Tropic hurricane rarely hits, its utility companies still have to be prepared for major outages. ComEd, the largest electric utility in Illinois, knows these storms well and knows it needs organized, dependable response vehicles that are always ready to roll.

The Problem ▶ ComEd needed a mobile upfit that could bring logistics support trailer with power, heating, air conditioning, work space, and storage space. And they needed it fast. A project like this typically takes a year to complete. This one had to be done in half the time to be ready for hurricane season. The trailer needed to be built tough enough to withstand delays.

The Solution ▶ From the beginning, EZ STAK kept in close contact with ComEd. In a matter of days, they knew precisely how ComEd would use the trailer. Once they had their answers, they created a custom 3D model of the trailer. ComEd loved the design, especially the tough lightweight aluminum cabinets. So EZ STAK had to work, bringing in the most experienced technicians to build with this complexity, and to make sure the trailer would become a home.

The Result ▶ EZ STAK not only hit the deadline, they came in a week early, ensuring ComEd had plenty of time to have the trailer service and checked by June 1st. It's a really good example of what we can do. Paul, vice president of EZ STAK's National Fleet Manager, describes flexibility in deployment to the customers and delays working in a tight time line and it was a real challenge with a heavy-duty design. The trailer is built stuff strong enough to withstand whatever road work that comes.



The EZ STAK mobile workspace trailer was customized and built to withstand tough road conditions and deliver the best of all worlds.

Let's discuss how EZ STAK is to spec your next trailer upfit solution.
Call Paul Lawrenson at 830.944.330 or visit ezstak.com.



www.ezstak.com



CASE STUDY:
CONSULT, CUSTOMIZE, REPEAT

GREENMACHINE

CLEAN. QUIET.
ALL ELECTRIC
PULLING AND
TENSIONING.



THE NEWLY DESIGNED DPT40E IS POWERED BY A REGENERATIVE ELECTRIC MOTOR, ELIMINATING THE NEED FOR DIESEL AND HYDRAULIC OIL.

FOR SALES INQUIRIES, PLEASE EMAIL US AT SALES@TSE-INTERNATIONAL.COM

U.S. PATENT NOS. 8,322,689 B2 AND 9,178,340 B2

TSE
INTERNATIONAL, INC.
1-800-825-2402