

THE
UTILITYSOURCE

October 2017

Products and Services for Today's Electric, Telecom, and CATV Utilities

HAMMERHEAD

**ICUEE2017
DELIVERS!**

2200AT

**HammerHead Trenchless
Launches Remote-Controlled
22-Ton Winch at ICUEE**



★
COME SEE
US AT
ICUEE 2017!
BOOTH #2838
★

GET MORE BANG FOR YOUR BUCK...

Because so much rides on a quality upfit.

Transform your fleet the EZ way. Any Fit. Any Configuration.



PROUDLY MANUFACTURED
IN THE USA

To get your next trailer work ready call Paul Lawrenson
at 630.994.3300 Ext.207 www.ezstak.com

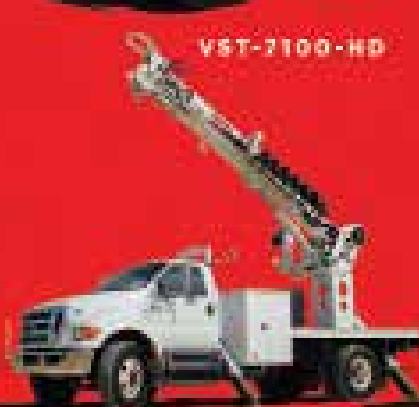




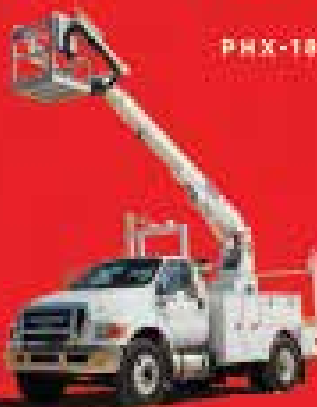
VST-2100-ND

PHX-180-1

SKYBIRD-T2151



TMD DIGGER DERRICK



VTP-40-NE
CABLE PLACER



VANTEL-29-NE



TEL-29-NE

DEMAND BETTER. DEMAND VERSALIFT.



As the world's leading aerial lift manufacturer, **Time Manufacturing** has made aerial work safer and more efficient for its customers since 1955. Our **VERSALIFT** product line has grown to now include over 50 model choices - whether it be a 24' lift or one reaching up to 210 feet, there's a VERSALIFT to get the job done.

For more information

contact
254-399-2100
www.VERSALIFT.com

PG 4 Industry News

PG 8 ICUEE 2017 Delivers Innovative Industry Trends, Hands-On Experiences and Enthusiastic Crowds

PG 16 C&K Announces New High-Performance Switches for Modern Utility Meters

PG 20 HammerHead Trenchless Launches Remote-Controlled 22-Ton Winch at ICUEE

PG 26 Company Profile: RegScan One Global Regulatory Software

PG 28 New Protective Apparel Line for Utility Workers from Lakeland Industries, Inc. Offers Revolutionary Moisture-Wicking & FR Results

PG 30 Milwaukee® Announces New Dipped Gloves, Improving Safety & Dexterity on the Jobsite

PG 36 New Product News

PG 40 Ad Index

NATIONAL SALES
MANAGER **Hank Underwood**
205-624-3796
george@handfmedia.net

EDITOR **Annie Galey**
annie@handfmedia.net

CONTRIBUTING EDITOR **Brandon Greenhill**
brandon@tipsmag.net

CREATIVE/WEB DIRECTOR **Jacklyn Greenhill**
jacklyn@handfmedia.net

ADMINISTRATIVE
DIRECTOR **Steven Hobson**
steven@handfmedia.net

CEO
Christy Hobson

PRESIDENT
Glen Hobson



Executive and Advertising Offices

PO Box 1568

Pelham, AL 35124

phone: 205-441-5591 fax: 205-624-3354

www.theutilitysource.net

glen@handfmedia.net

The Utility Source™ is published twelve times a year on a monthly basis by CJS Media, Inc. The Utility Source™ is distributed free to qualified subscribers. Non-qualified subscription rates are \$57.00 per year in the U.S. and Canada and \$84.00 per year for foreign subscribers (surface mail). U.S. Postage paid at Birmingham, Alabama and additional mailing offices.

The Utility Source™ is distributed to Power, Telcom and CATV Utilities and Utility Contractors throughout the USA. Publisher is not liable for all content (including editorial and illustrations provided by advertisers) of advertisements published and does not accept responsibility for any claims made against the publisher. It is the advertiser's or agency's responsibility to obtain appropriate releases on any item or individuals pictured in an advertisement. Reproduction of this magazine in whole or in part is prohibited without prior written permission from the publisher.

POSTMASTER: Send address changes to
CJS Media, P.O. Box 1568
Pelham, AL 35124
PRINTED IN THE USA

Get Cool!

Extend transformer life!

Increase transformer capacity up to 166%!

- expert technical assistance
- low sound levels
- energy-efficient motors
- large inventory
- one-piece cast aluminum blades
- galvanized or stainless steel guards

KRENZ-VENT
quality engineered, performance tested

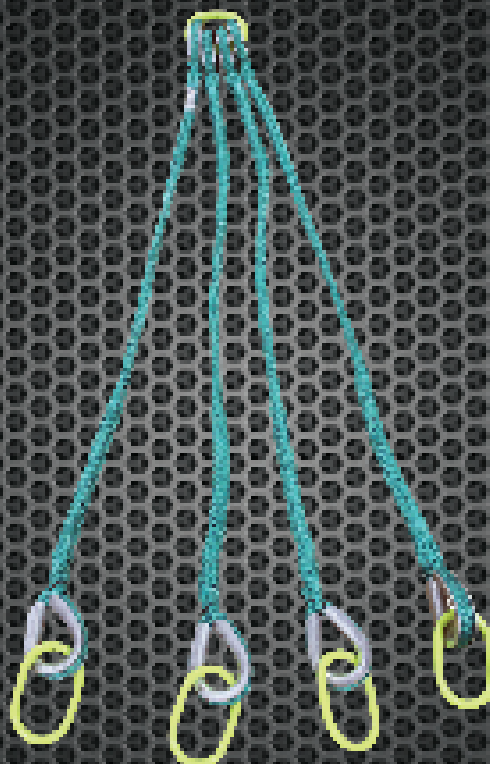
DDIN[®]

TRANSFORMER SLINGS

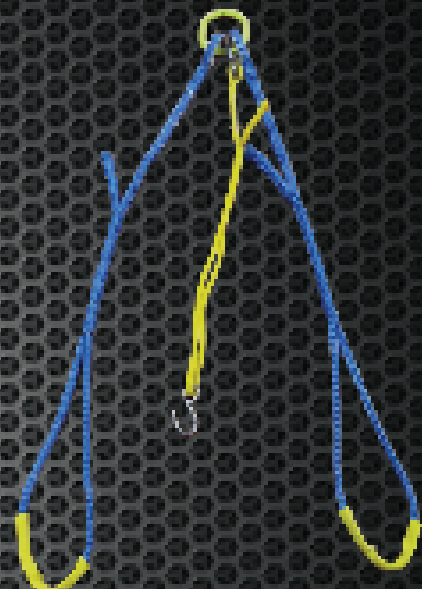
MANUFACTURED, PROOF TESTED AND TAGGED
BY CERTIFIED ROPE SPECIALISTS



TSSB
ADJUSTABLE
TRANSFORMER SLING



TS34PM-4-HD
HEAVY DUTY
THREE PHASE PAD MOUNT



TS12PM-2
SINGLE PHASE
PAD MOUNT

For More
Information

Phone: 877-860-5666
International: 630-860-5666
Español: 630-694-5853
www.tallmanequipment.com



J.D. Power Releases Gas Utility Residential Customer Satisfaction Study Results

Industry-wide efforts to improve safety through a combination of multimedia direct customer outreach and residential safety inspections are having a positive effect on residential gas utility customer satisfaction. According to the J.D. Power 2017 Gas Utility Residential Customer Satisfaction Study, SM released today, customer satisfaction has increased for the sixth consecutive year on a nationwide basis.

“The residential gas utility industry has committed significant resources to customer engagement, dramatically increasing the number of communication channels they use and consistently positioning themselves as advocates of safety who are here to help customers,” said Carl Lepper, Utility Industry Analyst at J.D. Power. “That work is paying off in the form of consistently improving customer satisfaction scores that are being driven by perceptions of increased safety and reliability.”

The study, now in its 16th year, ranks large and midsize utility companies in four geographic regions: East, Midwest, South and West. Companies in the midsize utility segment serve between 125,000 and 399,000 residential customers, and companies in the large utility segment serve 400,000 or more residential customers.

www.jdpower.com

Hino Trucks Adds Dealers to Certified Ultimate Network

Hino Trucks is proud to introduce the latest group of dealers that have been selected as “Certified Ultimate”, Hino’s dealer excellence program. From new products and services to training and dealership presentation, Certified Ultimate Dealerships are setting a new benchmark in the industry. Hino customers can expect an Ultimate Ownership Experience that delivers higher standards at every touch-point throughout the lifecycle of product ownership at these locations.

To be considered for certification these dealers are exceeding exceptional performance goals and are fulfilling stringent customer total support requirements in the areas of Facilities, Business Processes and Personnel Training. The locations below have gone through the extensive process of certification and now join our current group of seven Hino Trucks’ Certified Ultimate dealerships.

- H.K. Truck Services, Inc.- Plainfield, New Jersey
- Bentley Truck Services, Inc.- New Castle, Delaware
- Lynch Truck Center- Waterford, Wisconsin
- Matheny Motor Truck Co- Mineral Wells, West Virginia
- Industrial Power Truck & Equipment*- Ft. Worth, Texas

*Second Certified Location

www.hino.com

Material Handling Equipment

Your One Source For All Your Material Handling Needs

- Storage Products (Steel Cabinets, Shelving & Lockers)
- Loading Dock Equipment
- Conveyors
- Pallet Racks
- Mezzanines
- Carts & Trucks
- Containers & Bins
- Safety Equipment
- Drum Handling Equipment
- Hoppers
- Wire Partitions
- Lift Tables
- In-Plant Buildings
- Cranes (Jib & Bridge)
- Hoists & Trolleys



1-800-239-3434



WAREHOUSE EQUIPMENT AND SUPPLY CO.®

116 West Park Drive • P.O. Box 19808
Birmingham, AL 35219

Email: sales@warehouseequipment.com

Web: www.warehouseequipment.com



Utility Pole Puller



Eliminates Need
for Drilling Holes
Around Poles

- Saves Time & Money
- Operate with a Skid Steer or Derricks Truck

Professional Grade-
Power &
Performance

- Telespar Square Tubing Puller
- Operates using Sign Truck Bed Hydraulics, Skid Steer or Tractor Hydraulics



SIGN POST PULLER



WE HAVE THE ROPE TO GET THE JOB DONE.



Buccaneer Rope
COMPANY

800-358-767

www.bucrope.com

Terex Utilities' Holds Annual Hands On Training Seminar

For 39 years, fleet managers, technicians, purchasing managers, and other office personnel have attended Terex Utilities' annual Hands On Training Seminar. Described as "helpful, informative and detailed," by one attendee, the event held August 21-23, 2017, provides customers and distributors with a better understanding of typical applications and proper use of Terex equipment.



"The intent is not to make participants qualified operators, but to provide people who don't operate aerial devices or digger derricks on a day-to-day basis with a hands-on learning experience. We hope to make them more informed about the equipment," said Ken Vlasman, Customer Service Manager, Terex Utilities "Whether it's showing a purchasing manager the added value of optional equipment or giving a technician insight into how the equipment is used, Terex Utilities strives to be a strategic business partner for users; from the smallest municipality to the largest investor owned utility," he added.

This year, 36 people from Australia, Chile, El Salvador, New Zealand, Trinidad, and the United States (including one from Hawaii), participated in equipment operation tasks at the company's training headquarters. Those attending represented utility companies, utility co-ops, rental companies, and dealers.

www.terex.com/utilities •

Weather Resistant Solid Brass Padlocks

Made to your specifications in the U.S.A.



HERCULOCK

Hercules Industries, U.S.A.

HERCULES INDUSTRIES, INC.

Manufacturer of HERCULOCK Padlocks

P.O. Box 197 • Prospect, Ohio 43342

Toll Free: 1-800-345-2590

Fax: (740) 494-2274

www.HERCULOCK.com



ICUEE2017DeliversInnovativeIndustryTrends, Hands-OnExperiencesandEnthusiasticCrowds

The temperature outside wasn't the only thing running hot in Louisville, KY. Attendees and exhibitors at ICUEE – the International Construction and Utility Equipment Exposition agreed that the show exceeded their expectations with specialized exhibits, hands-on test drives, interactive product demonstrations and lots of activity and leads in the booths.

Commencing Oct. 3-5, the 2017 installment of the Demo Expo was the largest in the show's history with 28-plus acres of exhibits (nearly 1.24 million net square feet) of the latest utility and construction equipment, products and technologies and more than 1,000 exhibitors, of which 25 percent were new to the show.

Tracking close to the 2015 record-breaking attendance, nearly 18,000 registered attendees from all 50 states and

more than 50 other countries worldwide perused the exhibits, raised money for the Red Cross Disaster Relief and the Call of Duty Endowment, and took advantage of all that the show had to offer. Attendee demographics in the utilities category was up 6 percent over 2015 and the utility construction category was up 3 percent over 2015 totals.

"We had a great turnout and participation at ICUEE 2017," said Rick Rodier, vice president, Sitework Systems Division of The Toro Company and 2017 ICUEE chair. "It was inspiring to see the enthusiasm of so many utility and construction professionals networking and sharing ideas, and finding the product innovations and solutions that will help them grow their businesses."

Exhibits and Equipment "Test Runs"

HAMMERHEAD— THE MOLE THAT STARTED A *Revolution*



© American Society of Dredging Engineers
Revolutionary War Reenactment, Photo

THE AMERICAN (MOLE) *Revolution* BEGAN IN 1989...

We took a look at the primitive piercing tools of the day, and we said, "We can do better." We made the original HammerHead® mole tougher. More dependable. We made it field-serviceable. We stood behind each revolutionary change with the best warranty in the industry.

AND THE *Revolution* CONTINUES...

Available only at your local Ditch Witch® dealer

**Find your local dealer at hammerheadtrenchless.com
or call 800-331-6653**

MOLING | RAMMING | BURSTING | HDD ASSIST | WINCHES | CIPP

©2017 Earth Tech Company, LLC



A Charles Machine Works Company



Representatives from Ditch Witch and Man Lift said they plan to return to the next ICUEE, in 2019.

Education on Industry Best Practices

ICUEE 2017 education focused on utility and construction “hot topics” presented by industry experts to help attendees enhance their safety knowledge, increase efficiencies and reduce downtime on the job.

New Field Classroom sessions highlighted industry best practices first hand with equipment on the show floor, and the indoor ICUEE Demo Stage expanded the show’s outdoor equipment demo component with more product innovations in action.

Another new feature, ‘Tomorrow’s Topics Today’ sessions from show owner and producer Association of Equipment Manufacturers (AEM), explored industry trends and emerging technologies.



Rounding out ICUEE 2017 education were popular returning programs: the iP Utility Safety Conference and Utility Fleet Conference plus industry certifications.

Special Events and Networking

In response to the unusual number of natural disasters, a new ‘Disasters Taskforce: Preparing for What’s Next’ program tackled disaster preparedness in the aftermath of the current hurricane season, with a former FEMA advisor.

Gretchen Bakke, author of ‘The Grid: The Fraying Wires Between Americans and Our Energy Future’ was the featured speaker in the new ‘Diversity in the Grid’ luncheon brought to you in partnership with Terex Utilities and AEM.

ICUEE 2017 featured specialized exhibit pavilions for fleet management, safety and green utilities, China and Korean exhibit pavilions, and the Lift Safety Zone from the National Commission for the Certification of Crane Operators (NCCCO).

Hands-on equipment test drives and interactive product demonstrations included a 2-mile Test Drive Zone for on-road equipment and technologies.

Over the roar of the Super Witch, a demo vehicle with an 850 horse power 502 Chevy Engine, Tucker Dotson, Ditch Witch regional sales manager for the Eastern United States, shared that the show has been going great for the enduring ICUEE exhibitor.

“Telecom is hot and it’s a big deal for us to be here at ICUEE,” said Dotson. “We’ve been coming to the show since its inception and 2017 has proven to be another great show for Ditch Witch. It’s been steady in the booth and it’s a great opportunity for us to meet with customers and prospects and show our equipment in one location.”

Liz Kendrick, project sales manager for Man Lift, a new exhibitor to ICUEE, echoed Dotson’s comments.



“We are looking to make our mark in the industry and shows like ICUEE help us do that,” said Kendrick. “We couldn’t be happier with the experience. Our president came down in 2015 to walk the show and at that point we knew this was the way to go to get out to market. We’re busy and we’re very happy with the results.”

A NEW GENERATION OF CRANE

Venturo service cranes will be reaching new heights in 2017. With the addition of van cranes, enclosed service body cranes, new designs, new upfit options and added features on existing cranes, Venco Venturo Industries will be innovating like never before.

Stay tuned throughout 2017 for new and exciting changes with Venturo service cranes!



12110 Best Place Cincinnati, Ohio 45241
800-226-2238 VENTURO.COM

The ICUEE Industry 'Give-Back' Auction returned with the goal of connecting military veterans with quality jobs. All proceeds again went to the Call of Duty™ Endowment, the nonprofit organization founded by Bobby Kotick, CEO of Activision Blizzard. The auction, plus onsite donations, to benefit the organization raised over \$37,000.

The Endowment helps military veterans secure high-quality employment and works to raise awareness of the value vets bring to the workplace.

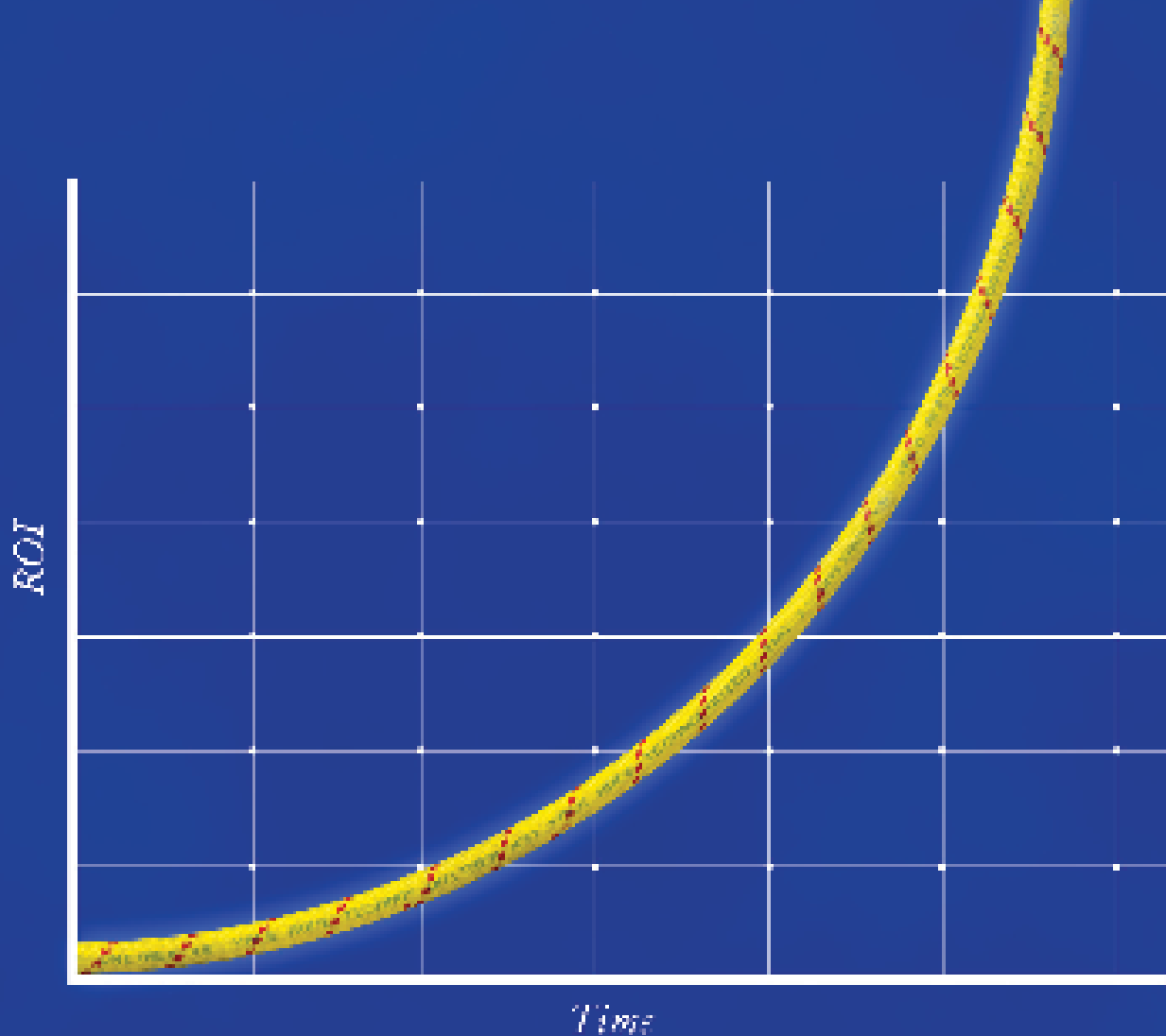
A new "Discover ICUEE" walking tour before show opening offered a behind-the-scenes look at the exhibition, and ICUEE 2017 closed with an enhanced 'Bourbon, Beer & Bites' networking reception.

The biennial ICUEE is also known as The Demo Expo and is the leading event for utility professionals and construction contractors seeking comprehensive insights into the latest industry technologies, innovations and trends, owned and produced by the Association of Equipment Manufacturers (AEM).

AEM is the North American-based international trade group representing off-road equipment manufacturers and suppliers, with more than 950 companies and more than 200 product lines in the agriculture and construction-related sectors worldwide.

www.icuee.com





Unitrex XS¹ Max Wear. Unmatched performance in the field and in the boardroom.

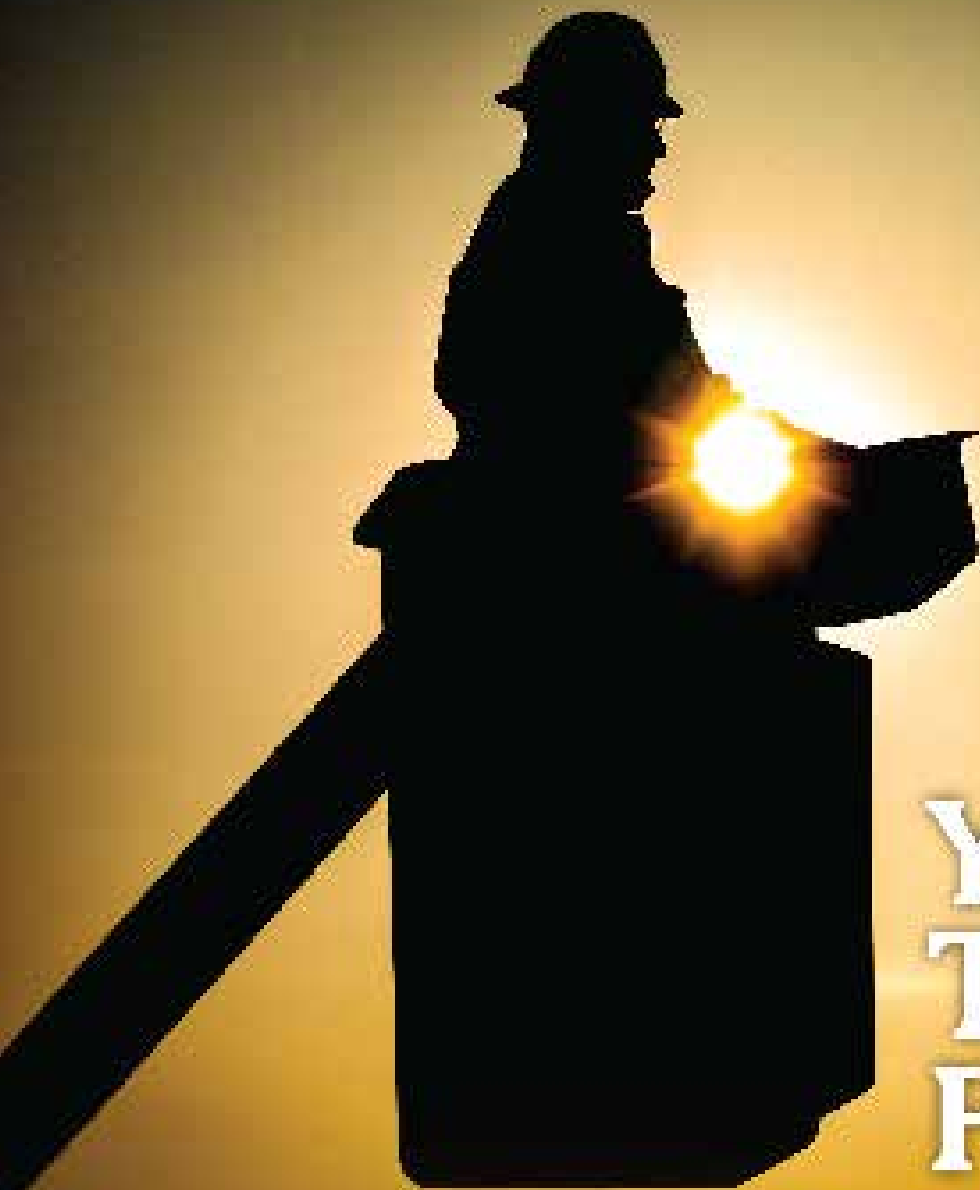
Electric line swinging is easier and more economical with Unitrex[®]. Made with a core of Honeywell Spectra[®], it is up to 10 times lighter than steel, while delivering comparable strength. The urethane-coated polyester jacket provides excellent abrasion resistance for great productivity that lasts.

To learn more, visit www.yalecordage.com

YALE CORDAGE

Performance. Proven. Proven. Proven.

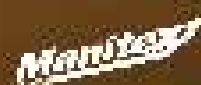
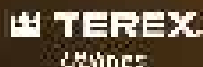
© 2014 Yale Cordage. All rights reserved. | York, Maine 04075 | p: (202) 707-3380 | f: (202) 707-4020



Your Trusted Partner.

Partnering with Ring Power gives you access to a vast range of jobsite-tough products to round out your fleet. Ring Power carries machines from dozens of manufacturers to ensure you always have access to the right tools for your job.

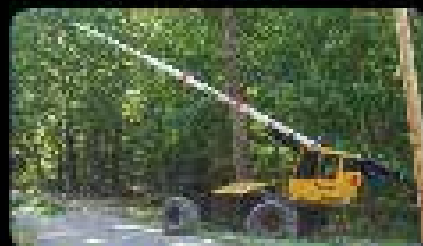
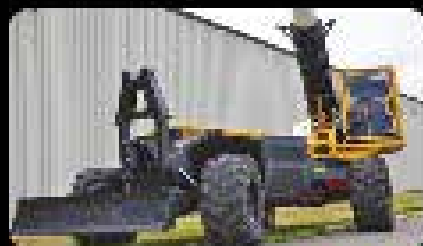
Short-term, long-term or rental-purchase options available.



1-844-766-RENT • Utility.RingPower.com



MECHANICAL TRIMMER



RAYCO EXCLUSIVE FEATURES

- Compact, non-articulated design
- 3-mode steering, (front axle, 4-wheel, and crab steer)
- Machine levelling
- Comfortable operator cabin



CALL - 800.392.2686

VISIT - RAYCOMFG.COM

C&K Announces New High-Performance Switches for Modern Utility Meters



Designed to Protect Smart Meters, C&K's KMS, KSR, SDS, and ATS Switch Series are Built to Withstand Tampering and Harsh Environments

C&K, one of the world's most trusted brands of high-quality electromechanical switches, today announced several new series of tactile and detect switches to help power and protect modern energy meters. The KMS, KSR, SDS, and ATS switch series deliver a reliable, cost-effective, solution for menu screen navigation and anti-tampering, built to withstand the harshest operating conditions in both commercial and industrial environments.

With the ability to monitor energy usage, provide cost and payment information via a display screen, as well as shut off the service remotely by the utility for lack of payment, today's smart meters do much more than simply measure energy usage. Small, rugged and reliable tactile switches are frequently used to navigate today's smart meter displays, offering a flexible mechanical layout for design engineers. The KMS tactile switch series provides a tactile feel needed to communicate an image of quality to the customer, ESD protection, and a compact size which is perfect for use in smart meters that have increasingly shrinking screen displays. Additionally, the KSR tactile switch series includes four actuation forces, an available detect option, and compatibility with a lead-free reflow soldering process ideal for industrial electronics.

Because energy meters are typically placed outdoors and can't be visually monitored by the utility, they must be tamper-resistant and be able to endure a wide variety of environmental conditions. Detect and snap switches make it harder for people to rig the meter's internal electronics

by sending a signal to the utility in the event the meter's cover is pulled off. The SDS detect switch series fulfills these requirements by offering a low-profile package sitting just 2mm off PCB, 2mm over travel, ideal for detector applications and low actuation force (75 grams max.).

Additionally, the ATS series comes in a normally closed package and offers low power consumption, which is critical for long life of battery operated meters. With a footprint of 6mm x 3.8mm and a height of 3.2mm, the ATS has total travel of up to 1.1mm. The switch is also sealed to IP54 in order to stand up to challenging environmental conditions.

"Unlike many switching applications where routine actuation cleans away oxidation on the contacts, switches used in the utility industry are typically used infrequently and can sit for years in challenging environmental conditions, but still need to reliably switch to low current levels when actuated," said Mike Bolduc, global marketing manager, industrial & medical segments, C&K. "C&K's KMS, KSR, SDS, and ATS switch series were developed with these conditions in mind, and play a key role in helping to prevent energy theft as well as enabling customers and technicians to reliably interact with the meter.

The KMS, KSR and SDS switch series are all available in a variety of miniature and ultra-miniature form factors to meet any design needs. For more information about C&K's KMS, KSR and SDS switch series or to request a sample, please visit: www.ckswitches.com/markets/industrial/energy-utility/ •

Rugged Dependability

STANDARD IN EVERY MACHINE WE BUILD!

Hogg & Davis has been proudly manufacturing utility line equipment for more than half a century.



Our trusted products are part of the fleets and tool cribs of nearly every investor-owned power and communications company in the United States and Beyond.



HOGG & DAVIS, Inc.

HOGG & DAVIS, INC.

3800 EAGLE LOOP • ODELL, OR 97044

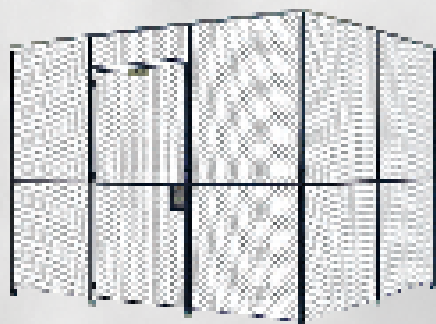
TEL 541.354.1001 • FAX 541.354.1080

WWW.HOGGDAVIS.COM



A Division of Good Hope Industries

"From the simplest to the complex, JESCO does it best!"



DIAMOND WIRE MESH ENCLOSURES

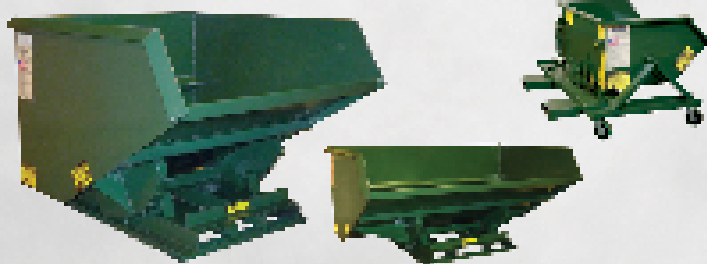
Time tested diamond mesh partitions have been pre-engineered for easy installation, give an unrestricted view into the cage, total air circulation, low initial cost, and maintenance. Send us the footprint of your project and allow our engineers to assist you on your next project.



WIRE MESH INFILL PANELS

We will custom fabricate these infill panels to meet your specific requirements. Just send us your specs!

Available in diamond, rectangular and square mesh, with or without standoffs. Frames available in 1" x 1 1/2" channel or with a hemmed edge. Other size framing materials and mesh are available, specify weld pattern and types of weld finish desired. Division 5, 6 and 10.



SELF DUMPING HOPPERS - 50+ Sizes and Specials!

All welded self-dumping hoppers are available in more than 50 different sizes that will fit to your application. All units are engineered to return to an upright position and have a positive locking latch. Safety retaining chain and tie rod assembly is standard on all our units. Open-sided, low profile, narrow, extra wide and 10,000# capacity units are all within our product line. Casters available on standard units up to the 2-4 cubic yard size.



EEZY STAKK Enclosures

2' x 1" Rectangular Mesh EEZY STAKK Enclosures are designed and engineered to save time and money on your project installation. Woven wire mesh panels welded into an angle frame; frames secured to the posts. No wire ties or unhard of specialty clips. Just nuts, bolts, and standard hand tools are required. Dark Gray painted panels allow for full visibility into enclosure.

Visit www.JescoOnline.com



Jesco Industries, Inc.
PO Box 589
Litchfield, MI 49652-0589

Call 800-529-6697

Tel: 517-542-2506
Fax: 517-542-2507
E-mail: Jesco@JescoOnline.com

PIONEER OF TOMORROW'S INNOVATIONS.

Solutions for electric utilities focusing on power delivery systems

History speaks for itself. Terex Utilities has a legacy of innovative solutions that have changed the industry — from the first hydraulic digger carrier to our recent launch of the Terex® Load Alert™ system. We provide game-changing solutions that work for our customers and plan to continue with the Future. Terex Works for You™ by listening and taking action. We will have to help solve your challenges and provide innovative, high quality products and services that fit your needs.

www.terex.com/utilities



WORKS FOR YOU.™



HammerHead Trenchless Launches Remote-Controlled 22-Ton Winch at ICUEE



HammerHead Trenchless, a Charles Machine Works company, introduced its new 22-ton, radio remote-controlled HydroGuide® HG2200 cable winch at the 2017 International Construction and Utility Equipment Exposition (ICUEE) in Louisville, Kentucky. The HG2200 completes the HammerHead line of next-generation winches designed for maximum efficiency and ease-of-use in pipe-bursting, slip-lining and pipe-slitting applications.

“Our 20-ton winch had proven to be a top performer in the field,” said Josh Hood, HammerHead Product Manager. “We knew how much operators appreciated the efficiency-enhancing improvements recently made to the other HydroGuide models so our goal was to incorporate those features into the 20-ton model, as well as develop new features to further productivity. The result was our new 22-ton unit, unlike any other cable winch on the market.”

Radio remote-control enhances ease-of-use and productivity. It provides operators maximum visibility when positioning the winch by freeing them from a position at the controls on the back of the unit. Operators simply launch the unit’s patented

23-foot hydraulic boom with the touch of a button and can fine-tune its depth to 20 feet. The boom is adjustable along all three axes for exact positioning. The HG2200 is now the largest tonnage unit equipped with the unique, self-deploying boom, exclusive to HammerHead Trenchless.

Line speed and pressure for the unit’s 2,500 feet of cable are both infinitely adjustable within their parameters. At pressures providing 0.5 to 22 tons, payout speed can be set anywhere from 0 to 100 feet per minute and pulling speed from 0 to 60 feet per minute.

The unit is available in wheeled or tracked configurations and is powered by a fuel-efficient, 24.8 hp Tier

An advertisement for R&R LOTION Insect Repellent. The background shows a construction worker in a blue hard hat and green safety vest standing in front of wind turbines. In the foreground, there are several bottles and boxes of the repellent. The text includes:

R&R LOTION

**Up to 8 Hour Protection
Against Ticks & Mosquitoes**

**Compliant with
ASTM D120 (Linemens Glove)
&
ASTM F2621 (FR Clothing)**

Samples & Catalog - (480) 343-9255
Scottsdale, AZ | RRlotion.com

Bury American



4-compliant Kubota® radial piston engine. The HG2200 comes standard with hydraulic levelling jacks making set up more efficient by allowing the operator to adjust the grade of the machine via the wireless remote control.

The HydroGuide HG2200 shares much in common with the HG1200 released last year. The HG2200 is the final model to undergo a redesign making the full line of HydroGuide winches the most advanced and user-friendly in the industry.

All HydroGuide models utilize a similar control platform. Standardization across the line of winches means users familiar with one can easily operate and service the other.

Commonality of parts also lessens inventory requirements, assuring high part availability. Large panel doors on both sides with under-hood lighting make servicing the unit quick and easy.

An optional Electrical Strike Identification system (ESID) adds extra safety when working near underground electrical utilities.

The HydroGuide HG2200 is available from HammerHead Trenchless or from authorized dealers, worldwide. Authorized dealers can be found on the web at www.hammerheadtrenchless.com or by calling 800.331.6653. (International: + [1] 920.648.4848).

www.hammerheadtrenchless.com

R&R LOTION

Compliant with
ASTM D120 (Linemen's Glove)
&
ASTM F2621 (FR Clothing)

Samples & Catalog - 980-423-8265
Scottsdale, AZ | RRlotion.com

GPS INSIGHT FLEET & ASSET TRACKING SOLUTION



Your helping hand in fleet management.

The Premier TRACKING SOFTWARE FOR YOUR FLEET



866-477-4321

gpsinsight.com

MOROOKA

*Leading the way
in innovation.*



Visit us at
Booth N3103



Keeping America On Track | morookacarriers.com


Seamless Integration

RegScan One Global Regulatory Software

RegScan Web Services



Your System, Our Content

 **RegScan ONE**

One World, One Platform

www.regscan.com

Discover your software solution today!

With a dedicated staff of experts in four U.S. states and Washington D.C., and an ever-growing network of in-country resources, RegScan can always be counted on as a trusted resource for up-to-date regulatory information from every corner of the globe. RegScan has consistently outpaced a growing league of competitors in the industry niche we incepted, by offering unique solutions to our Fortune 1000 customer base. Whatever business you're in, we can assist you with your compliance needs. Our vast product line includes online compliance solutions for a variety of industries:

- Manufacturing
- Transportation
- Energy
- Chemicals and more!

RegScan's unique online tools enable easy access to, and interpretations of, global environmental regulations and operational standards. Do your research and get your alerts through the RegScan One system, or have your content exported via web services to any online environmental management system. Users of the RegScan One system can create custom legal registers and audit protocols for more than 140 jurisdictions. Access the interface in nine languages:

- English
- Chinese
- French
- German
- Italian
- Japanese
- Malay
- Portuguese
- Spanish

Educational Resources

Webinars

RegScan understands that staying in compliance is critical. But it doesn't have to be complicated. That is why we host webinars several times throughout the year that help our clients tackle ever-evolving problems in the EHS industry. Prior topics covered included regulatory overviews, the Changing Role of the EHS Manager, and ISO 14001:2015. Such topics specifically address the newest industry standards while banishing compliance confusion, provide necessary tools to manage today's EHS challenges and reduce time and money spent on compliance activities.

Tutorials

RegScan also produces a number of helpful videos for our users. They answer most commonly asked questions on using the RegScan One interface. You may wish to visit our Informational & Tutorial Videos Page prior to submitting a ticket to see if your question can be answered with the assistance of one of these videos.

Quality Suite

RegScan has introduced audit protocols and checklists geared to quality management in healthcare. They cover the basic ISO 9001 and Quality Systems, Medical Devices (United States and the European Union), and Pharmaceuticals.

I-Comply Checklists have been added to provide Environmental, Health, Safety, Security for Data Centers and Offices. When you still have EH&S issues, but not the intensity of a manufacturing opera-

tion.
Tracking Regulatory Change

Strikethrough

Strikethrough allows you to effortlessly see the amendment history of a regulation by comparing the current regulation with an earlier or future version. Changes are easily identified by color-coding. Anything that has been added will appear in green, while anything that has been deleted will appear in red.

My WatchList

My WatchList is a custom regulatory change management tool that allows you to monitor change at various levels of detail. It gives you quick access to only the information you need, while providing a clear record of what you have and haven't reviewed. My WatchList is the easiest way for a Web Services user to build a custom regulatory register, which RegScan will automatically export to your online environmental management system.

LookOut Email Alert

By defining specific keywords or phrases, LookOut allows you receive daily Email alerts on State or Federal regulatory changes.

RegScan Customer Support

As part of our ongoing commitment to improve the RegScan user experience, we use a ticketing system for customer support inquiries. This allows us to streamline requests and better serve you. Available 24/7, the ticketing system

allows you to immediately report an issue and track the support team's response to it. Every support request is assigned a unique ticket number. For your reference, we provide complete archives and history of all your support requests. A valid email address is required to submit a ticket.

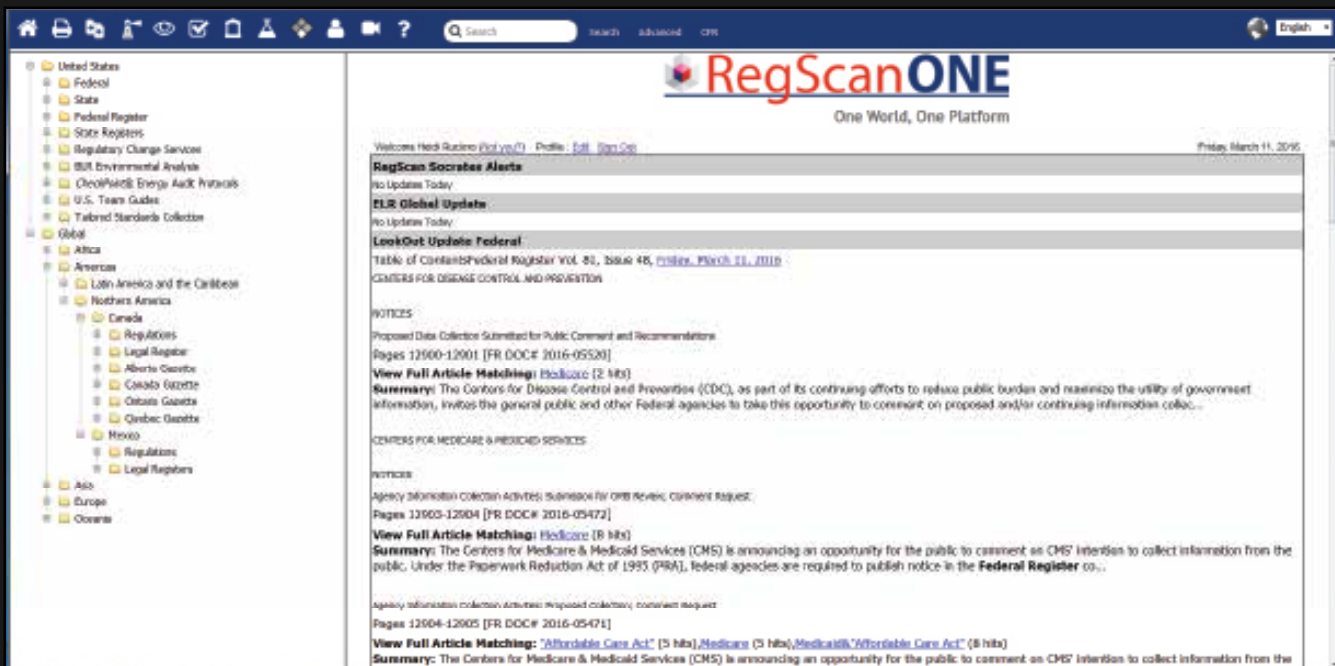
Schedule a Demonstration

The RegScan team will gladly demonstrate any of our products or services for free. Our online demonstration sessions can accommodate up to 25 people, and we will schedule a meeting whenever it's convenient for you. During these interactive demonstrations, our experienced staff will go through whatever products or services interest you. You'll also have the opportunity to ask questions, and discuss licensing options that are tailored to your needs. If you decide to purchase, we can take of your training and support needs too. We frequently update our library of training videos, and we'll be happy to arrange online or in-person training sessions. Furthermore, our in-house technical support team is always available on weekdays (except for holidays) between 8 a.m. and 8 p.m. Eastern time, and online 24/7.

To learn more about RegScan, please call +1 570-323-1010, or Email info@regscan.com.

Also find us on LinkedIn and follow us on Twitter @RegScanOne!

www.regscan.com



New Protective Apparel Line for Utility Workers from Lakeland Industries, Inc. Offers Revolutionary Moisture-Wicking & FR Results

Lakeland Industries, Inc. today introduced a new line of FR protective apparel with enhanced, industry-leading moisture wicking technology designed specifically for electrical utility workers. Incorporating a 55/45 high performance FR blend and 3M Scotchlite Segmented Reflective Trim for hi-vis options, the apparel line is NFPA 70E and NFPA 2112 – UL Certified with a lightweight, high performance design. The new line protects utility workers by absorbing moisture 7x faster than traditional FR cotton, moves an average 50% more moisture to the exterior of the fabric creating a drier zone next to the skin, and maintains moisture movement capabilities at a rate 5X faster than other brands.

“According to the Bureau of Labor Statistics, electrical powerline installer and repairer is consistently ranked as one of the top ten most dangerous jobs in America,” said Brad Sipes, Director of Business Development. “With the development of our high performance apparel for the electrical utility market, Lakeland is combining its expertise in dual certified FR apparel with moisture wicking technology - specifically to keep electrical workers cool and comfortable in outdoor work conditions.”

Designed by linemen for linemen, Lakeland’s new FR high performance apparel line combines superior moisture wicking fibers, style and functionality in addition to these key features:

- A 55/45 blend (data shows this is the best blend for moisture wicking and transport)
- Tag-free back collar
- Seamless underarm gussets designed to eliminate seam pull and shirt rise
- Flat-seam construction with contrast design

Lakeland is providing further assistance for electrical utility workers in regard to protective apparel selection and job-site performance with a Lineman Safety & Performance Guide. The free guide will help men and women learn how to climb stronger, work more safely, and learn how to select and layer FR apparel to optimize job performance. The guide is available for download here.

www.lakeland.com

LAKELAND FR KNIT PERFORMANCE APPAREL

SHARP DESIGN FEATURES

You've been wearing stylish performance gear for years, now you can get it at work. Lakeland's contrasting stitch design means you can go from safe-at-work to the gym, the trails or out on the town, with ease.

SEAMLESS UNDERARM GUSSETS

FR shirts designed to eliminate seam pull and shirt rise mean you won't feel any restriction as you maneuver on the job. In fact, you'll feel total arm freedom with our industry leading underarm gussets and seamless design. Less chafing and restriction, maximum comfort.

CONTOURED SHAPE FOR IMPROVED SAFETY

No matter what your size or shape, men or women, Lakeland has an FR performance shirt for you. Designed to provide functional fit for all, Lakeland apparel offers a sleek design to reduce bulk and keep you safe on the job.

SUPERIOR MOISTURE WICKING TECHNOLOGY

Our FR garments are designed to pull moisture off your skin to keep you cooler in the heat and warmer in the cold. With your body temperature in check, you'll see a boost in your comfort and overall safety on the job.



TAG FREE BACK COLLAR

Lakeland FR Performance apparel is designed with your comfort in mind. The tag free back collar means you'll never fight with an itchy neck tag again.

MOBILITY OF ARM MOVEMENT

Designed to accommodate overhead reaching and side to side movements, the Lakeland apparel arm construction is a thing of beauty. With a singular seam that runs the length of the sleeve and body, the garment is both flexible and functional.

FLAT SEAM CONSTRUCTION

Never feel the scratch of thread again. Lakeland FR performance garment seams are smooth and comfortable against your skin, with fabric laid side-by-side and stitched flat, so the transition of fabric is almost, well, seamless.

FUNCTIONALITY IN THE DESIGN

A properly constructed FR garment should balance safety, protection, fabric quality and comfort, without compromise. Designed specifically to outfit the elements and maximize moisture wicking and comfort, Lakeland's FR performance apparel is designed with safety and maneuverability in mind.



www.lakeland.com

BETTER STYLE. PERFORMANCE. MOISTURE WICKING.

info@lakeland.com | [#AskforLakeland](https://twitter.com/AskforLakeland)

CUT & PUNCTURE RESISTANT

Offering 12 Styles of Kevlar[®] Lined Work Gloves



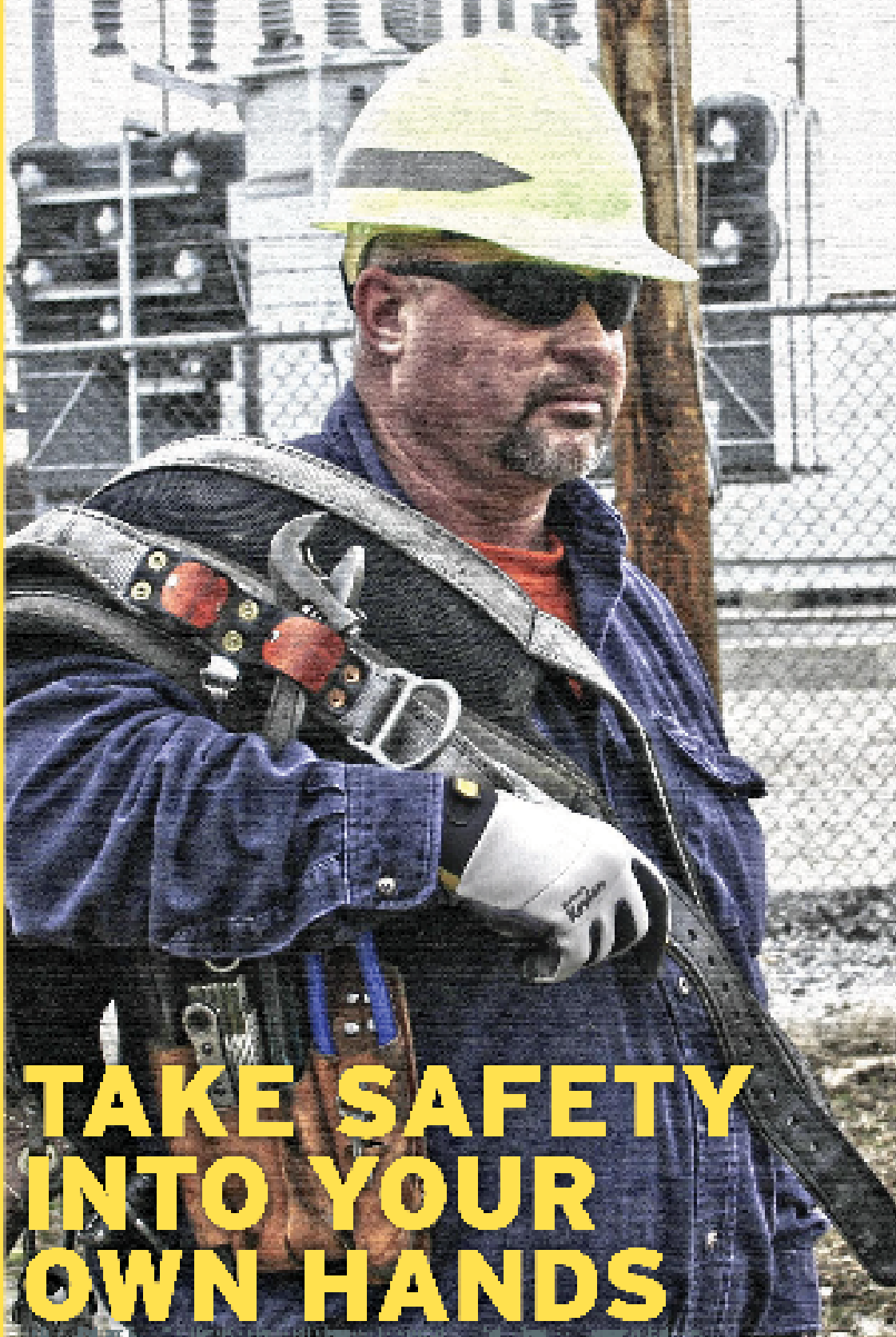
TITAN IMPACT RESISTANT LINED WITH KEVLAR[®]
mfg# 09-9083-10



GENERAL UTILITY LINED WITH KEVLAR[®]
mfg# 05-3080-70



FR LEATHER LINED WITH KEVLAR[®] WIDE-CUFF
mfg# 12-3275-60



TAKE SAFETY INTO YOUR OWN HANDS

Contact Us About Wear Trials

info@ytgloves.com

www.ytgloves.com

800-680-7177



Kevlar



#1 IN DURABILITY



Milwaukee Announces New Dipped Gloves, Improving Safety & Dexterity on the Jobsite

Milwaukee Tool enhances safety on the jobsite with the introduction of new Dipped Gloves. The new gloves are ANSI/ISEA-rated for Cut Levels 1, 3, and 5 and are EN 388 rated. Designed to provide users with all-day comfort and ultimate durability, all of the new gloves have been thoughtfully developed with proprietary knitting that provide the protection necessary at these key ANSI/ISEA cut levels and EN ratings. Each also features SMARTSWIPE™ technology so users can access phones or tablets without removing the gloves.

“As jobsite safety is emphasized across the nation, users increasingly need hand protection that is comfortable, durable and provides the dexterity needed to work with small fasteners and fittings,” said Matt Vargo, Product Manager for Milwaukee Tool. “Through a proprietary knitting process and a nitrile dip, these new gloves provide outstanding durability, perform well in a wide range of temperatures and are resistant to most common chemicals

and solvents found on the jobsite; all while maintaining an excellent grip and all-day comfort.”

Cut Level 1 Dipped Gloves

The textured nitrile palm of the Cut Level 1 Dipped Gloves offer a better grip on materials, as well as increased dexterity, and their nylon/lycra blend construction provides increased comfort and wicks away moisture to keep hands dry. SMARTSWIPE™ touch screen functionality has been incorporated into the index finger tip to permit the use of touchscreen devices without removing the gloves.

Cut Level 3 Dipped Gloves

These gloves feature ANSI/ISEA cut level 3 protection to help prevent injuries from sharp objects on the jobsite. They also provide a more comfortable grip, maximum dexterity when handling small objects, and feature a Comfort Web Grip for outstanding grip performance. The nitrile dip material provides ultimate durabil-

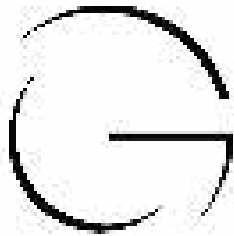
ity and best-in-class puncture resistance while SMARTSWIPE™ fingertips and palms provide full access to touchscreen devices.

Cut Level 5 Dipped Gloves

These gloves feature ANSI/ISEA cut level 5 protection to help prevent injuries from demanding jobsite applications, such as work with sheet metal/glass, wire stripping, and ducting. The gloves utilize a double-dipped nitrile grip for best-in-class puncture resistance, and added durability. Similar to the Cut Level 3 Dipped Gloves, the Cut Level 5 Dipped Gloves also include SMARTSWIPE™ fingertips and palms.

Milwaukee Tool’s new Dipped Gloves are designed to provide users with ANSI-rated protection, all-day comfort, ultimate durability and the best dexterity for handling small objects and using touch-screen devices – without sacrificing jobsite productivity.

www.milwaukeetool.com



GOLIGHT

Revolutionary Lighting Solutions



Durable...Versatile...Powerful...GUARANTEED



When the job gets tough, we can rely on our linemen to show us their wits and march into the elements to get our electrical service back online. More often than not, that means battling wind, rain, snow and ice and doing so in the dark. In those conditions, light that can be dynamically directed where it is needed, when it is needed is an essential tool for safety and productivity. In both emergency situations and day-to-day conditions, Golight has power to be a vital tool in extending work hours and increasing productivity. Golight has been a partner to the men and women who keep our lights on for almost 20 years and we are committed to seeing that relationship grow and develop.



KOOZES... BANDANNAS... DECALS . Send an email to media@golight.com and let us know you saw our ad in "THE UTILITIES SOURCE" and we will send you some Lineman branded merchandise.

AERIAL TOOL BIN®

"Take Your Tools to a
NEW HEIGHT"

**ORGANIZE FOR
SAFETY**



Save your Company \$6,500
per year PER WORKER with
this Revolutionary Product!

www.aerialtoolbin.com

262-825-6784



100%
MADE IN
THE USA

- Made of reinforced, nonconductive, UV protected polypropylene orange plastic.
- Light, durable, and ready as strong as steel.
- Attaches to square or rounded 90 degree corners — secured to the railings with two locking bolts.
- Triangular shaped to provide maximum working area and freedom from clutter.
- Three compartments with removable partition walls.
- The movable parts tray is magnetic and attaches to the metal strips on top of the bin. (included for a limited time while supplies last)
- Your tool belt is safely secured to the front of the bin.

**Save Time
Money &
BACK PAIN**

SETTING NEW STANDARDS

BDG[®] ArcTek gloves are designed for ultimate protection - no matter how harsh the conditions

ARCTEK



CAT 4 ATPV 60cal/cm²

#20-10000



#20-10000

#20-10000

CAT 4 ATPV 45cal/cm²

#20-10000



#20-10000

CAT 2 ATPV 8.5cal/cm²

#20-10000



#20-10000

BDG
BOB DALE GLOVES

BDG[®] BOB DALE GLOVES

Toll Free: 1-855-213-7113

Tell the masses what your company does and how it all started.



Contact us to be featured for a company profile in our next issue!

www.theutilitysource.net/advertising

30,000th

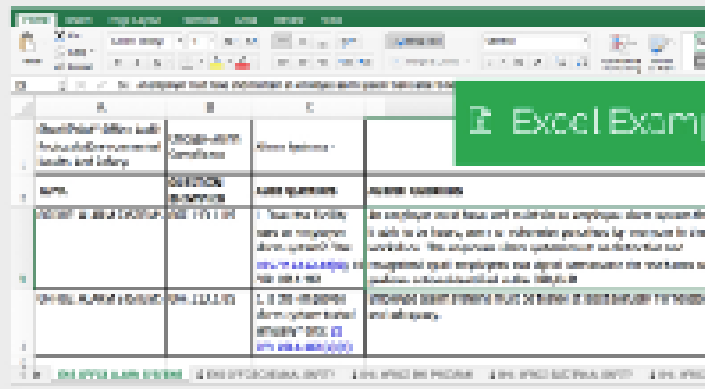
i-Comply CHECKLISTS™

Office & Data Centers

Got Sales Offices and Data Centers Around the Globe?

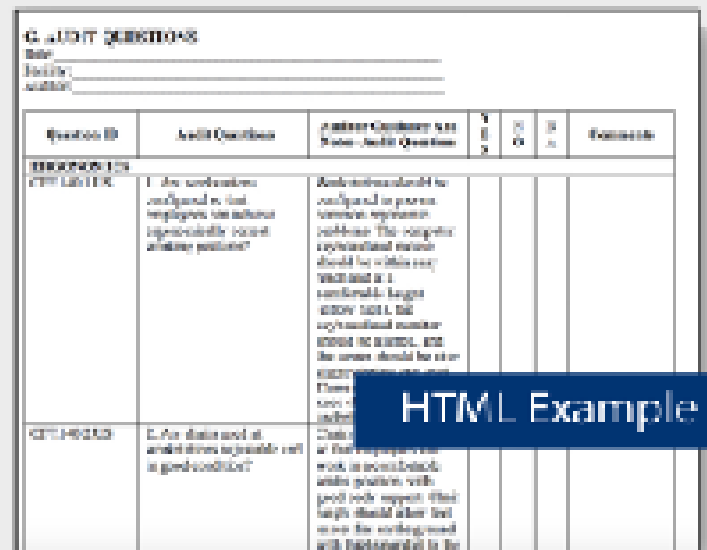
Too **many** sites? Too **hard** to coordinate? Too **costly** to send auditors?
Having **difficulty comparing results** across the locations you have inspected?

If you said **yes** to any of these questions, how can you be sure that those sites are in compliance with your Global EHS compliance and risk programs?



Excel Example

Audit Questions	Audit Responses
1. Are all employees properly trained on safety procedures?	All employees have been trained on safety procedures and are required to attend annual refresher training.
2. Are all safety equipment and PPE inspected and maintained?	All safety equipment and PPE are inspected and maintained according to manufacturer's instructions.



HTML Example

Question ID	Audit Question	Audit Response	Y	N	NA	Comments
Q001	1. Are all employees properly trained on safety procedures?	All employees have been trained on safety procedures and are required to attend annual refresher training.				
Q002	2. Are all safety equipment and PPE inspected and maintained?	All safety equipment and PPE are inspected and maintained according to manufacturer's instructions.				

Learn More by Visiting

www.regscan.com/products/icomply

GSSI Releases the UtilityScanO HS



GSSI, the world’s leading manufacturer of ground penetrating radar (GPR) equipment, announces the release of the UtilityScanO HS, the newest product in its popular UtilityScan GPR system line. The UtilityScan line is the industry standard for efficiently identifying and marking the location and depth of subsurface utilities, including gas, sewer, and communication lines. The newly released UtilityScan HS model incorporates the 350 HS antenna, a state-of-the-art digital antenna designed with features GSSI’s patented HyperStacking™ technology. HyperStacking technology greatly improves the depth and data resolution performance over traditional RTS technologies.

HyperStacking is a revolutionary real-time sampling (RTS) technique patented by GSSI, which greatly improves the receive performance of a GPR system while maintaining the measurement speed and radiated emission limits. By incorporating the 350 HS antenna, the UtilityScan HS deliver higher data resolution, better RF noise immunity, and better depth penetration than traditional GPR antennas. The 350 HS can reach depths of up to 12 meters (40 feet). The UtilityScan HS also provides advanced signal processing tools such as stacking, signal floor tracking and background removal.

www.geophysical.com •

HD Electric Company, a Textron Inc. Company Introduces the NEW PRX-4

Proximity Voltage Detector. It provides utility professionals, arborists and first responders with a safety tool that will alert them to potentially dangerous high voltage in their work areas. With 2 voltage range settings of 50V-4kV and above, the PRX-4 is an easy way to find out if voltage is present without having to make direct contact.

Features

- Sealed to resist water penetration in typical outdoor environments
- Voltage ranges from 50VAC to 4kVAC and above
- Detects voltages around 3” at the 50V setting, 10” at 4kV and above

- Rechargeable battery, quick recharge - 15 minutes for a typical full day use
- Weighs less than 1 pound
- Loud beeper and LED lights indicate voltage

PRX-4 joins the rest of the Proximity Voltage Detector family of non-contact detectors.

www.HDElectricCompany.com •





SafetySPACE in any SPACE

MSA XTIRPA™ Manhole Guard System for Confined Space Entry

To learn more about MSA's complete line of safety solutions or request a FREE, no-obligation safety evaluation, visit MSAsafety.com/safetyspace

WE KNOW WHAT'S AT STAKE.

©2016 MSA Safety Company

MSA
The Safety Company

Felling Trailers New X-Force Hydraulic Detachable Gooseneck Offers “Super Low” Deck Height



BUILDING SOLUTIONS...
On budget, on schedule, on target

Cost-efficient educational facility solutions from Varco Pruden Buildings provide attractive and affordable structures for your campus:

- classrooms
- natatoriums
- gymnasiums
- multiple story facilities

With our value-engineered steel-framed building systems, recycled material content and long-life “cool paint” choices, VP Buildings can provide energy-efficient structures to help curb operating costs. This free brochure is available at www.VP.com/ad/PED

Varco Pruden Buildings is a division of McStage Buildings North America, Inc.

Felling Trailers, Inc.’s, X-Force Hydraulic Detachable Gooseneck model line now offers a “Super Low” deck height with the X-Force SL Series. The X-Force SL Series provides an 18” usable level deck height with a 6” ground clearance, making it an ideal spec for Carriers that specialize in extra-tall cargo/equipment transport. The low loaded deck height is ideal for a multitude of applications due to the full width level deck as opposed to a drop-side model. Felling Trailers designed and engineered the SL Series with versatility and functionality in mind knowing that with changing markets, Carrier’s cargo/equipment loads vary. The versatility offered with the 18” usable level deck height allows a carrier to transport cargo/equipment as asphalt milling machines, paving equipment, track excavators, etc. that have tall transport heights, ultimately keeping the Carrier’s wheels and payday rolling.

The SL Series are offered in four capacities; XF-70-2 HDG-SL (35 ton capacity), XF-100-3 HDG-SL (50 ton capacity), XF-110-3 HDG-SL (55 ton capacity), and XF-120-3 HDG-SL (60 ton capacity).

www.felling.com

VP BUILDING SOLUTIONS
 ...and relationships are a virtue

New Megohmmeters From AEMC

AEMC offers a NEW line of easy to use handheld megohmmeters capable of measuring insulation resistance up to 200GΩ. The selectable test voltages range from 10 to 1000V depending on the model. These compact, lightweight meters are ideal for testing cables, small motors, pumps, transformers and industrial equipment. The Model 6536 is ideal for special applications in the aerospace and defense sectors where very specific test voltages are required.

Selectable test voltages from 10 to 1000V (model dependent)

Insulation resistance measurement up to 200GΩ (model dependent)

Automatic discharge at the completion of the test

www.aemc.com

Shoo-pin™

Flex-Cable Adapters

PT-FX Series adapters are designed to terminate high-strand flex-cable (locomotive, mining, welding) to machinery, panels, and transformers. The pins fit mechanical set-screw type connectors and are sized for the current carrying capacity of the cable. These adapters feature the Greaves flared Shoo-in™ barrel-opening design for easy cable insertion. Insulating covers are provided.

Wherever flex-cable terminates in a set-screw lug:

- Telecommunications
- Construction Sites
- Drilling Platforms
- Theme Parks
- Locomotive
- Welding
- Marine
- Mining



GREAVES

www.greaves-usa.com

800-243-1130

Company	Pg.	Website
Aerial Tool Bin	32	www.aerialtoolbin.com
Bob Dale Gloves	33	www.bobdalegloves.com
Buccaneer Rope	6	www.bucrope.com
EZ STAK	IFC	www.EZSTAK.com
GoLight	31	www.golight.com
GPS Insight	24	www.gpsinsight.com
Greaves	39	www.greaves-usa.com
HammerHead Trenchless	9	www.hammerheadtrenchless.com
Herculock	6	www.herculock.com
Hogg & Davis	17	www.hoggdavis.com
Jesco Industries	18	www.jescoonline.com
Krenz Vent	2	www.krenzvent.com
Morooka	25	www.morookacarriers.com
MSA Safety	37	www.msasafety.com
Prinoth	7	www.prinoth.com
R & R Lotion	22-23	www.rrlotion.com
Rayco	15	www.raycomfg.com
Regscan	35	www.regscan.com
Ring Power	14	www.utility.ringpower.com
Shaver Mfg	5	www.shavermfg.com
Tallman Equipment	3	www.tallmanequipment.com
Terex	19	www.terex.com
The Power Gripz	IBC	www.thepowergripz.com
Time Versalift	1	www.versalift.com
TSE	BC	www.tse-international.com
Venco Venturo	11	www.venturo.com
VP Building Solutions	38	www.vp.com/ad/ped
Warehouse Equipment	4	www.warehouseequipment.com
Yale Cordage	13	www.yalecordage.com
Youngstown Glove	29	www.ytgloves.com



DESIGNED BY LINEMEN Proven by Science

**THE
POWER
GRIPZ**
.COM

Power Gripping

100% compliant, meets and exceeds all ASTM F 496 (ASTM F2073),
leather protector glove standards

HIGH VOLTAGE
Protectors Mitts
Class 1-4

HIGH VOLTAGE
Protectors
Class 1-4

Fire/Water & Cut Resistant
(CATEGORY A-4)



WORK GLOVE
KEVLAR Lined
- with or without
Knit Cuff

WORK GLOVE
THINSULATE Lined
- with or without
Knit Cuff



Standard
WORK GLOVE

WORK GLOVE also available in
KEVLAR or THINSULATE Lined



Totally
ArchWear

Put the Power of Superior Grip and Protection in your Hands!

- Five styles of work gloves M, L, XL and XXL
- Low and High Voltage Five Finger Leather Protectors available in sizes: 8-8.5 through 12-12.5
- Concom & Bell Cut Protectors available in Class 1-4
- Three Finger Mitts sizes: 9-11
- FWR Cut Resistant (CAT) Work Gloves
- ATP Ratings available at www.atp.org

Call: 877.271.0444

or order online at www.ThePowerGripz.com

GREEN MACHINE

CLEAN. QUIET.
ALL ELECTRIC
PULLING AND
TENSIONING.



THE NEWLY DESIGNED DPT40E IS POWERED BY A REGENERATIVE ELECTRIC MOTOR, ELIMINATING THE NEED FOR DIESEL AND HYDRAULIC OIL.

FOR SALES INQUIRIES, PLEASE EMAIL US AT SALES@TSE-INTERNATIONAL.COM

U.S. PATENT NOS. 8,322,689 B2 AND 9,178,340 B2

TSE
INTERNATIONAL, INC.
1-800-825-2402