

THE

APRIL 2019

# UTILITYSOURCE

Products and Services for Today's Electric, Telecom, and CATV Utilities

Terex Team Members  
Share Stories of Electrical  
Safety and STEM Careers  
with Students

See UTV  
International at  
EUPMC 2019





# BUILT TO WORK HARD

MAXIMUM POWER FOR  
HEAVY DUTY JOBS



Elliott's D86, D105 and D115 digger derricks offer the widest digging radii, highest torque, smoothest operation and best lifting capacities in the industry. Plus, they're backed by a lifetime structural warranty.

Elliott's Digger Derrick line is specifically engineered for transmission and heavy-duty construction projects. Built to work hard, day after day, year after year, the digger line boasts Elliott's high boom pinpoint geometry allowing for maximum power out of the hole, as well as features offering ergonomic seating and a variable displacement piston pump.

Every Elliott machine is designed to be the right tool for the job, which is why our aerial work platforms have working heights to 215', boom truck cranes with tip heights to 207', digger derricks, and special purpose track vehicle cranes. We will work with you to customize your machine, maximize your productivity, and get the job done.

## CONTACT US TODAY

Find a Distributor at [www.elliottequip.com](http://www.elliottequip.com)

+1 (402) 592-4500 | [sales@elliottequip.com](mailto:sales@elliottequip.com)

**ELLIOTT**  
EQUIPMENT COMPANY



# MADE FOR **MORE** TO KEEP PACE WITH **YOU**



You begin each day before dawn with a drive and determination to do **more** than the day before. When you move at this pace, you know to do more you need equipment that is made for more. That's why our utility line and land clearing equipment, like our **Forestry Mulchers and Aerial Trimmers**, is built from the ground up to meet your needs, delivering:

**More** Power and Production  
**Lower** Operating Costs  
**Greater** Reliability  
**Better** Safety Features  
**Superior** Operator Comfort and Control

If you're ready to operate equipment that's made to keep pace with you, then we invite you to go to **[morbarkdealers.com](http://morbarkdealers.com)** to find your local authorized Morbark or Rayco dealer. Your dealer will work with you to assess your needs now and in the future, as well as offer equipment recommendations, financing options, wear parts and service if you should ever need it.

Equipment is available for **SALE** or **RENT**.



PG 4	Terex Team Members Share Stories of Electrical Safety and STEM Careers with Students
PG 12	Continuous "Hands Off" Insulation Resistance Testing of Critical Motors
PG 22	Klein Tools® AC/DC Digital Clamp Meter Provides Improved Usability and Viewability
PG 28	Ad Index



Pg 12



## Atlantic Screen & Mfg., Inc.

- Well Rehab. Products
- Manholes
- Bentonite
- Filter Sock
- Inline Chemical Mixers
- Sampling Ballers
- Clear PVC Pipe
- Locking Caps

**Manufacturers of Slotted & Preforated Pipe  
ranging from 1/2" to 24" in diameter**

# 302-684-3197

FAX 302-684-0643  
142 Broadkill Rd. • Milton, DE 19968  
[www.atlantic-screen.com](http://www.atlantic-screen.com)  
email: [atlantic@ce.net](mailto:atlantic@ce.net)



# THE UTILITYSOURCE

Products and Services for Today's Electric, Telecom, and CATV Utilities

Vol. 19 Issue 4

## PUBLISHER

Glen Hobson  
205-441-5591  
[glen@tipsmag.net](mailto:glen@tipsmag.net)

## ACCOUNT EXECUTIVE

Hank Underwood  
205-624-2182  
[hank@handfmedia.net](mailto:hank@handfmedia.net)

## ADMINISTRATIVE DIRECTOR

Steven Hobson  
[steven@tipsmag.net](mailto:steven@tipsmag.net)

## EDITOR

Brandon Greenhill  
[brandon@handfmedia.net](mailto:brandon@handfmedia.net)

## CREATIVE/ WEB DIRECTOR

Jacklyn Greenhill  
[jacklyn@handfmedia.net](mailto:jacklyn@handfmedia.net)

P.O. Box 1568 • Pelham, AL 35124  
Phone: 205-441-5591 • Fax: 205-624-2181  
[www.theutilitysource.net](http://www.theutilitysource.net)  
[info@theutilitysource.net](mailto:info@theutilitysource.net)



*The Utility Source*™ is published twelve times a year on a monthly basis by H & F Media, Inc. *The Utility Source*™ is distributed free to qualified subscribers. Non-qualified subscription rates are \$57.00 per year in the U.S. and Canada and \$84.00 per year for foreign subscribers (surface mail). U.S. Postage paid at Birmingham, Alabama and additional mailing offices.

*The Utility Source*™ is distributed to Power, Telcom and CATV Utilities and Utility Contractors throughout the USA. Publisher is not liable for all content (including editorial and illustrations provided by advertisers) of advertisements published and does not accept responsibility for any claims made against the publisher. It is the advertiser's or agency's responsibility to obtain appropriate releases on any item or individuals pictured in an advertisement. Reproduction of this magazine in whole or in part is prohibited without prior written permission from the publisher.

**POSTMASTER:** Send address changes to  
H & F Media, Inc. P.O. Box 1568  
Pelham, AL 35124  
**PRINTED IN THE USA**



# WE KEEP AMERICA ON TRACK



**MOROOKA**

UTILITY CARRIERS

Call: 800-365-7260

OR

Visit: [morookacarriers.com](http://morookacarriers.com)

# Terex Team Members Share Stories of Electrical Safety and STEM Careers with Students



Terex Utilities team members recently took the company's Safety Town and Build-a-Boom Workshop to two different groups of students. The purpose was to demonstrate concepts in electrical safety and to offer career exploration.

In February, about 70 3rd through 5th graders in the Florence School District, Florence, S.D., saw a live demonstration of how electricity travels path to ground with the Safety Town kit, learned about the role Terex equipment plays in utility operations, and then designed their own aerial device model in the Build-a-Boom Workshop.

Safety Town shows what happens when two characters in the town, Neon Leon and Lighntnin' Liz, come in contact with live voltage.



# PIONEER OF TOMORROW'S INNOVATIONS.

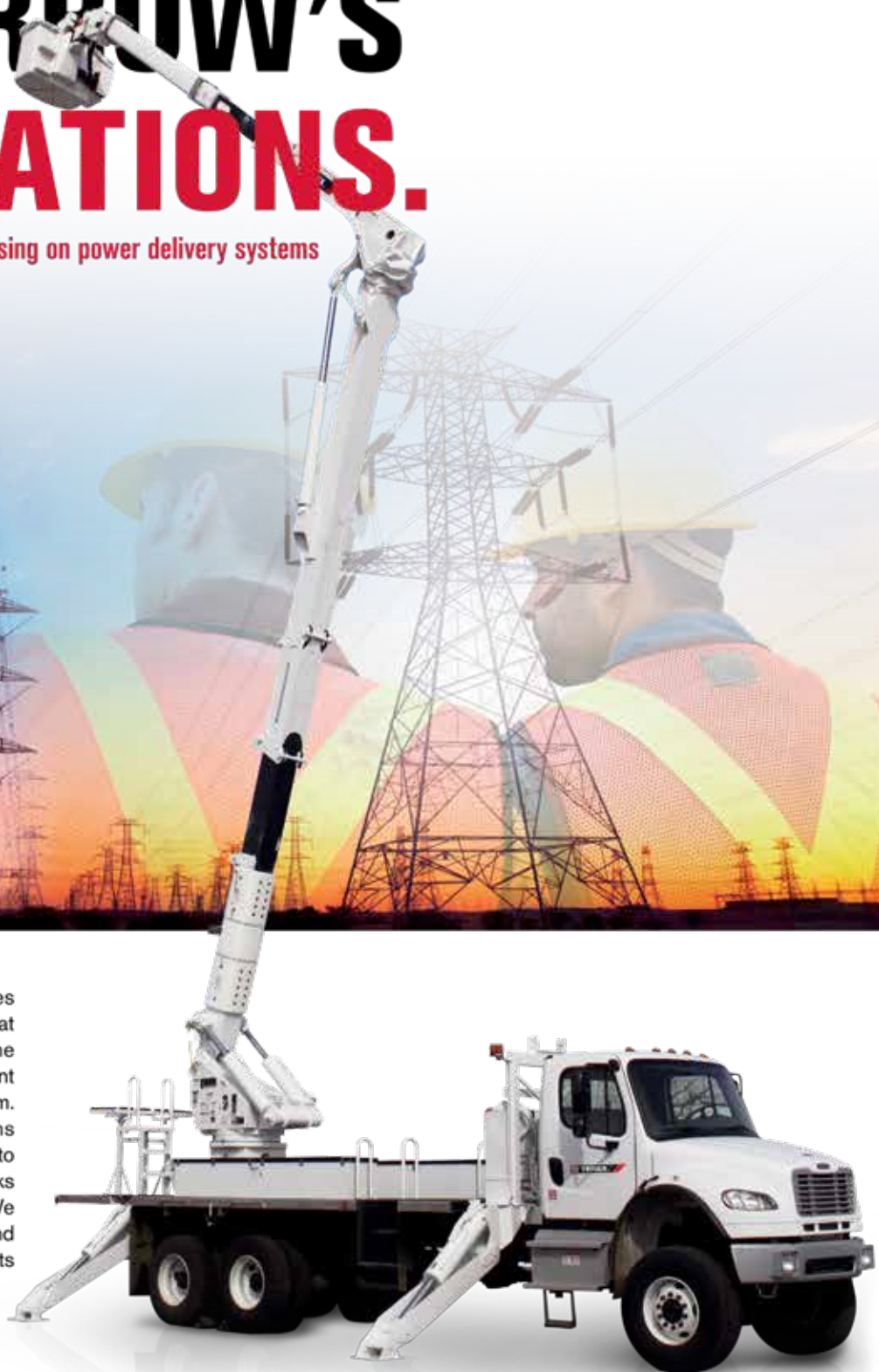
Solutions for electric utilities focusing on power delivery systems

History speaks for itself. Terex Utilities has a legacy of innovative solutions that have changed the industry – from the first hydraulic digger derrick to our recent launch of the Terex® Load Alert™ system. We provide game-changing solutions that work for our customers and plan to continue well into the future. Terex Works for You™ by listening and taking action. We are here to help solve your challenges and provide innovative, high quality products and services that fit your needs.

[www.terex.com/utilities](http://www.terex.com/utilities)



**TEREX®**



**WORKS FOR YOU.™**



"We describe how birds can sit on one wire, but if a bird touches another bird on a different wire, they would be electrocuted. We teach students the steps for exiting a vehicle if they are in a situation where an energized line has fallen on it. We also cook a hot dog using electricity to represent what happens to our bodies when exposed to electrical shock," explained Marci Lewno, Manufacturing Engineer and member of the Terex Utilities Community Engagement committee.

"My favorite moment of the assembly was when one student finished building her boom very quickly and started helping other kids with theirs. She was excited to show off her 'engineering' skills and did a great job," said Jesse Haagensen, Sales Application Technician for Terex Utilities. "Any opportunity to give students real world

experience is a plus," said Mitch Reed, Superintendent of the Florence School District. "Students have a variety of learning styles, and giving them the chance to work with their hands while constructing is crucial. We appreciate Terex and their efforts to educate our youth."

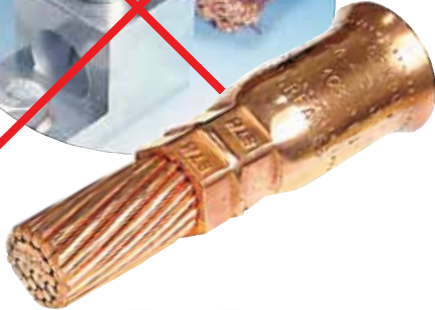
In March, Terex Utilities participated in a Microsoft DigiGirlz event hosted by Omnitech at the University Center Sioux Falls, S.D. campus. The event is for 8th through 12th grade girls and is focused on dispelling stereotypes of the tech industry. During the event, girls interact with women in technology and participate in technology sessions and demonstrations.

This is the second year that female employees of Terex Utilities participated in the DigiGirlz



When the cable doesn't fit, and you need a solution... **FAST**

# GO TO THE GREAVES ADAPTER ZONE!



For Copper  
Cable Only

## PT-FX Shoo-Pin™ Compression Adapters

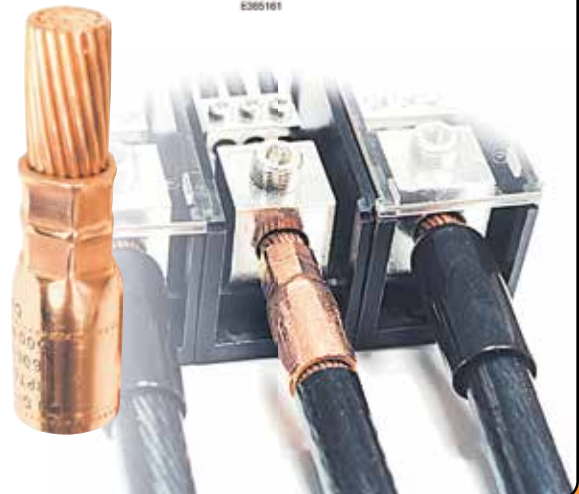
- All-copper compression adapters
- Allows reliable termination of highly stranded flexible copper cable into mechanical lugs
- Used in locomotive, mining, marine, and machinery applications
- Fits into mechanical set-screw type connectors in panels, transformers and machinery
- Features revolutionary Shoo-in™ barrel-opening design for easy cable insertion
- Fabricated of wrought copper with pin of Class B copper conductor
- Insulating covers are provided

## PT-R ReduceЯ™ Cable Reducing Adapters



For Copper  
Cable Only

- All-copper compression adapters
- Use where cable is oversized to reduce voltage drop on long runs
- Use fit existing C/B, transformer, or other gear lugs
- For Class B 'building wire' cable stranding only
- Fits into mechanical set-screw type connectors in panels, transformers and machinery
- Fabricated of wrought copper barrel with pin of Class B copper conductor
- Insulating covers provided



**GREAVES**

[www.greaves-usa.com](http://www.greaves-usa.com) ■ 1-800-243-1130





event. In addition to a demonstration of Safety Town, Lewno; Tiara Marcus, Quality Manager; and Ashley Johnson, Manufacturing Engineer, joined a panel discussion about why they chose a career in a STEM-related field.

Students asked about how to prepare for careers in STEM-related fields. "We stressed the importance of internships, finding a mentor, and explor-

ing coursework outside of major study area," said Lewno. "Many technical jobs require people to be detail-oriented, focused, and good problem solvers—traits needed in manufacturing and the utility industry," she continued.

#### *About Terex*

*Terex Corporation is a global manufacturer of lifting and material processing products and services delivering lifecycle solutions that maximize customer return on investment.*

*Major Terex brands include Terex, Genie, Powerscreen and Demag.*

*Terex solutions serve a broad range of industries, including construction, infrastructure, manufacturing, shipping, transportation, refining, energy, utilities, quarrying and mining. Terex offers financial products and services to assist in the acquisition of Terex equipment through Terex Financial Services. More information about Terex is available on its website:*

*www.Terex.com, and on its LinkedIn page -- www.linkedin.com/company/terex and Facebook page -- www.facebook.com/TerexCorporation.*

**www.Terex.com •**

## Material Handling Equipment

**Your One Source For All Your Material Handling Needs**

- Storage Products (Steel Cabinets, Shelving & Lockers)
- Loading Dock Equipment
- Conveyors
- Pallet Racks
- Mezzanines
- Carts & Trucks
- Containers & Bins
- Safety Equipment
- Drum Handling Equipment
- Hoppers
- Wire Partitions
- Lift Tables
- In-Plant Buildings
- Cranes (Jib & Bridge)
- Hoists & Trolleys



**1-800-239-3434**



**WAREHOUSE EQUIPMENT AND SUPPLY CO.®**

116 West Park Drive • P.O. Box 19808  
Birmingham, AL 35219  
Email: [sales@warehouseequipment.com](mailto:sales@warehouseequipment.com)  
Web: [www.warehouseequipment.com](http://www.warehouseequipment.com)



# THiNK™

## DESIGN SOLUTIONS

... with i-Clamps - Wire Connectors



**One-Way Series**  
for splicing several  
lines together



**T-Series**  
for branching off  
a common wire run



**Two-Way Series**  
uniquely designed for  
pre-assembly to add  
fixtures or components  
to existing wiring



LISTED  
E490622,  
E490623

- IDC (Insulation Displacement Connectors) • Easy to use • Quick and reliable connections
- Tamper Proof - Designed to withstand shock and vibration • Housing made from durable Polycarbonate • Tin-plated, High Performance, copper alloy contacts
- For use with 10-22 AWG insulated wires

IT'S WHAT'S ON THE INSIDE THAT COUNTS

**KEYSTONE®**  
ELECTRONICS CORP.

www.keyelco.com • (516) 328-7500 • (800) 221-5510



REQUEST CATALOG M85



# REDUCE TIRE VOLUME

up to **60%**

## ADVANTAGES OF CUTTING TIRES

- Tires can be stacked within each other (nested).
- Reduces transportation costs substantially by transporting a more dense load of tires.
- Reduces regulatory problems concerning tires.



TC-100 shown with Passenger Tire Compressor which will cut passenger tires up to 120 tires per hour.



### TC-120 TIRE CUTTER

For passenger, light truck and heavy truck tires; including super singles. Heavy truck tires can quartered at a rate of up to 40 per hour.

# OUTSTANDING IN THE FIELD

### CH-60C CHEETAH® BEAD SEATER

Seats beads on large tires in either vertical or horizontal position. Handles 24" to 54" wheel diameters.

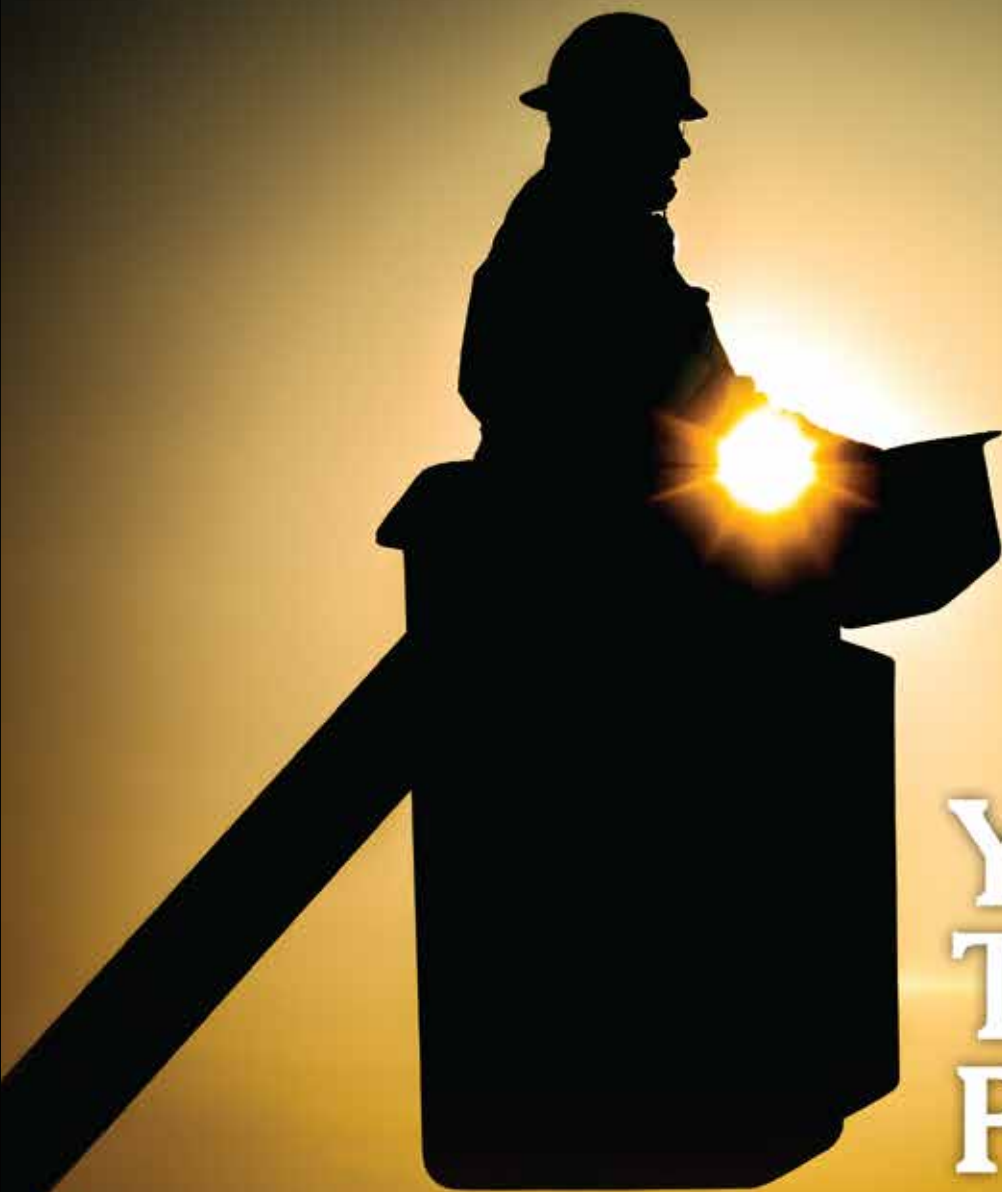
### TJ-110 TRACTOR/TRUCK AIR LIFT

11 Ton Lifting Capacity  
Min/Max height = 19" / 50"

Also Available  
TJ-70

7 Ton Lifting Capacity  
Min/Max height = 18" / 51"





# Your Trusted Partner.

Partnering with Ring Power gives you access to a vast range of jobsite-tough products to round out your fleet. Ring Power carries machines from dozens of manufacturers to ensure you always have access to the right tools for your job.

Short-term, long-term or rental-purchase options available.



1-844-766-RENT • [Utility.RingPower.com](http://Utility.RingPower.com)





# Continuous “Hands Off” Insulation Resistance Testing of Critical Motors

---

*Constant monitoring of critical motors while de-energized prevents failures on startup, reduces unscheduled downtime, saves on major rewinding repairs and increases personnel safety*

For decades, utility plant personnel have performed insulation resistance tests with handheld megohmmeters to prevent motor failures that lead to costly unplanned shutdowns, penalties and re-winding repairs.

However, these tests only provide a “snapshot” of motor health. In a matter of only a few days, motor windings and cables that are exposed to moisture, chemicals, contaminants or vibration can become compromised and fail at startup.

Portable megohmmeters also require electrical technicians to manually disconnect the equipment cables and connect the test leads on potentially energized or damaged equipment to perform the manual testing.

These tests expose technicians to potential arc flashes when they access the cabinet. In the United States non-fatal arc flash incidents occur approximately 5 to 10 times per day, with fatalities at the rate of approximately one per day.

With so much at risk, plant managers are recognizing the value of continuous megohm monitoring of insulation resistance that initiates the moment the motor is off until it is re-started again.

# STANDING SEAM ROOF ANCHOR

THE INDUSTRY'S LIGHTEST AND  
MOST UNIVERSAL FIT ANCHOR POINT

Patent Number: US D629.679



## FULL LINE OF FALL PROTECTION PRODUCTS

CALL NOW! **863-703-4522** OR  
TEXT **SSRA** TO **95577** FOR MORE INFO

[www.fallpd.com](http://www.fallpd.com)

Watch for more deals/messages, up to 4 messages per month. Data/Message Rates may apply. Purchase/Consent not required to participate. Reply HELP for help or reply STOP to stop.



Armed with this real-time information, maintenance personnel are able to take corrective actions ahead of time to avoid a failure that would interrupt production. By doing so, they can save utilities hundreds of thousands of dollars in repair fees for expensive rewinding, failure-to-produce penalties and lost production time.

Furthermore, permanently installed automatic testing devices allow for “hands-off” monitoring without having to access cabinets – keeping technicians out of harm’s way.

#### Motor Protection at Utilities

Power generation utilities rely heavily on motors, though the number and type vary depending on the size of the plant and type of fuel burned. Coal-fired power plants can have as many as 20-30 critical motors, with less for other types of fossil fuels. A combined-cycle plant may have less motors.

Critical motors are essentially those that could significantly impair the ability to safely meet business objectives or affect production levels if unexpectedly offline. This could include small 480 volt motors up to 13,800 volts. Some examples include circulating water motors, boiler feed pumps, gas compressors, forced draft and induced draft fans.

Most utilities maintain these motors through time-based preventative maintenance (PM) programs. Insulation resistance tests are typically scheduled on a semi-annual basis; however, given the reduction in personnel at most plants, it may even be less frequent. Based on these tests, motors may be scheduled to be sent out to repair shops for reconditioning.

Typically, insulation resistance tests are also conducted at the start of annual overhauls or planned outages, to identify any motors that might also need repairs.

Still, despite PM programs, motors that are offline or are frequently cycled can be quickly compromised.

“We had our fair share of motor failures, and it became quite costly,” says Richard Hohlman, who retired after 37 years working in power generation.

In the 90s, Hohlman was plant manager at a four-unit 1500-megawatt plant located on Long Island Sound.

“Sometimes the failures can be really expensive,” says

Hohlman. “At that particular plant, we had a couple of Westinghouse two-speed PAM AC induction motors and rewinding one of them would have been a six-figure expense.”

“From an O&M [Operations and Maintenance] perspective, if we can identify a weak motor and avoid the risk of trying to start it up and having it fail, that is a big savings,” adds Hohlman.

To avoid this scenario, Hohlman says he required all critical motors that were shut down for 24 hours or more to be manually tested with a megohmmeter before being restarted.

“That became an expense in itself, because the tests are often conducted at different hours of the day, at overtime rates,” says Hohlman. “But, by doing it we avoided a number of motor failures.”

Hohlman says a member of his team discovered a continuous testing and monitoring device, the Meg-Alert, and installed it initially on four circulating pumps and several induced draft fans. Later, the devices were also added to several forced draft fans and other critical motors throughout the plant.

The Meg-Alert unit is permanently installed inside the high voltage compartment of the MCC or switchgear and directly connects to the motor or generator windings. The unit senses when the motor or generator is offline and then performs a continuous dielectric test on the winding insulation until the equipment is re-started.

The unit functions by applying a non-destructive, current limited, DC test voltage to the phase windings and then safely measures any leakage current through the insulation back to ground. The system uses DC voltage levels of 500, 1000, 2,500 or 5,000 volts that meet the IEEE, ABS, ANSI/NETA and ASTM International standards for proper testing voltage based on the operating voltage of the equipment.

The test does not cause any deterioration of the insulation and includes current limiting technology that protects personnel.

“With continuous monitoring, the O&M team is aware at all times of the motor’s fitness for duty,” says Hohlman.

# **EFFICIENCY PRODUCTION**

## **America's Trench Box Builder™**

### **Utility Contractor's Choice for Trench Shielding & Shoring**

- Largest selection of shielding and shoring equipment available.
- Custom shields built to your specs.
- Site-Specific Engineering.
- OSHA Trench Safety Training.
- Jobsite Installation Assistance
- Efficiency Production knows that our success is based on your success!



**Steel Trench Shields**



**Hydraulic Shores**



**Build-A-Box™**



**Aluminum Shields™**



**Stone Mizer™**



**Slide Rail System**

**800-552-8800**

[www.efficiencyproduction.com](http://www.efficiencyproduction.com)

685 Hull Rd., Mason, MI 48854



**EFFICIENCY  
PRODUCTION**  
**America's Trench Box Builder™**



"Every single time the motor shuts off, if it is for seconds, a day, or for the 10 days of an outage, the motor is being tested," he adds. "And, if it goes below a safe level, it alarms immediately and can lock the motor from even starting."

This stands in stark contrast to the snapshot taken by a megohmmeter at the start of a shutdown. In a matter of days, the motor can pick up considerable moisture due to humidity and contamination.

"After a planned maintenance period, you can have megohmmeter readings that look good, but perhaps something happens to cause a delay to the start up," says Hohlman. "Now, the motor is sitting in moist or damp conditions and insulation resistance to ground is degrading. Perhaps two days later, you start the motor and lose it because the conditions have changed."

#### "Hands-Off" Monitoring

The continuous monitoring system also allows for a "hands-off" approach that does not require service technicians to access control cabinets to perform a manual insulation resistance test.

Instead, an analog meter outside on the control cabinet door shows the insulation resistance megohm readings in real time. The meter also indicates good, fair and poor insulation levels through a simple "green, yellow, red" color scheme. When predetermined insulation resistance set point levels are reached, indicator lights will turn on to signal an alarm condition and automatic notifications can be sent out to the monitoring network.

"With the Meg-Alert, you can walk up and just look at the megohm meter on the panel," says a Maintenance Supervisor who has spent 40 years working for a large American energy company. "The advantage is you know in real time, whether or not there is a low resistance reading on it."

At the first facility he worked at, the company purchased 23 Meg-Alert devices for critical motors.

"If you lose a critical motor, especially during peak production time, you have just lost 350 megawatts of production at the site," he adds. "You could be down for weeks if you have to remove the motor and send it out for repairs. That can have a huge financial impact."

Even if a spare motor is available on-site, the downtime and labor costs can escalate quickly.

Continuous monitoring can also show if the heaters used to maintain thermal temperatures or prevent condensation are working properly.

Most motors utilize heaters to maintain the temperature inside the motor so it doesn't vary drastically from operating temperature or ambient temperatures outside the unit. If it goes below the dew point, the motor will start picking up condensation while offline.

However, if these heaters fail to operate properly or the circuit breaker is tripped, plant personnel may not be aware of it until the motor fails on startup. Although these motor heaters are checked regularly, this can leave critical motors unprotected for weeks or even months.

"Given that a large 4160V pump motor costs about \$150,000 to rewind, I can buy an awful lot of continuous insulation testing and monitoring devices for that price and it prevents the issue," says the Maintenance Supervisor.

"I'm just trying to automate the process to prevent problems," he adds.

#### Preventing Arc Flashes

According to Hohlman, safety is another major driver behind the decision to install the continuous insulation resistance monitoring devices. Reducing employee exposure to potential harm from arc flash is important to every safety program.

Arc flashes are an undesired electric discharge that travels through the air between conductors or from a conductor to a ground. The flash is immediate and can product temperatures four times that of the surface of the sun. The intense heat also causes a sudden expansion of air, which results in a blast wave that can throw workers across rooms and knocked them off ladders.

Arc flash injuries include third degree burns, blindness, hearing loss, nerve damage, and cardiac arrest and even death.

Among the potential causes of an arc flash listed by NFPA 70E includes "improper use of test equipment."



## You'll never see it coming.

One second can change everything - especially where arc flash is concerned. That's why it's critical to understand the proper selection and use of PPE tested to withstand an arc flash event. To learn more about arc-rated PPE solutions from MSA or request a FREE, no obligation safety evaluation, visit [MSAsafety.com/safetyevaluation](https://MSAsafety.com/safetyevaluation).

## WE KNOW WHAT'S AT STAKE.

© MSA 2016 • ID 55-6085-MCP

**MSA**  
The Safety Company



Although de-energizing equipment before testing and wearing appropriate personal protective equipment (PPE) is recommended, the best solution is to eliminate the need to access the control cabinets at all to perform insulation resistance tests.

"Safety was definitely a major driver in our decision to purchase the Meg-Alert devices," says Hohlman.

#### Constant Vigilance

According to Hohlman, the bottom line with automated, continuous insulation resistance testing is that it can help utilities ensure critical motor reliability, decrease the probability of failure on startup, reduce unscheduled downtime and save on repair costs.

He adds that plants can also avoid penalties associated with failure to meet contractual power generation commitments. If a surprise motor failure occurs, it can cause production delays or cause the utility to be temporarily de-rated.

"If you have continuous monitoring, it reduces exposure to those kinds of penalties as well," says Hohlman.



For more information, contact Meg-Alert at [www.megalert.com](http://www.megalert.com); phone (800) 778-5689; or at 8766 Frank Drive, Minocqua, WI 54548.

[www.megalert.com](http://www.megalert.com) •

**The all new T14-54/617 is the Tier 4-compliant Trencher Mechanical Trencher. Packed with plenty of power for the toughest rock, the new T14-54/617 runs so cleanly there is no regen cycle needed. Trencher is known for being the longest lasting, toughest, underground equipment in the industry all backed by 24/7, worldwide, service and support. PinPoint® Telematics comes standard, logging and transmitting real-time data to optimize operations and reduce downtime due to missed maintenance.**

© 2018 American Augers, Inc.  
A Charles Machine Works Company



# MORE EQUIPMENT OWNERS RELY ON US.

We're proud that Dominion  
Rubber Tracks are the

**#1 SELLING  
RUBBER TRACK**

brand in America.

CALL US TODAY  
TO GET THE BEST  
PRICE ON  
RUBBER TRACKS,  
YANMAR PARTS  
& UNDERCARRIAGE  
PARTS

**800-365-7260**

**DOMINION**  
***Equipment Parts***

**[depparts.com](http://depparts.com)**

Ashland, VA » Jacksonville, FL » Dallas, TX » Cincinnati, OH » Portland, OR »  
Sacramento, CA » Schenectady, NY » Leduc, AB



# Rugged Dependability

STANDARD IN EVERY MACHINE WE BUILD!

Hogg & Davis has been proudly  
manufacturing utility line equipment  
for more than half a century.



Our trusted products are part  
of the fleets and tool cribs of  
nearly every investor- owned  
power and communications  
company in the United States  
and Beyond.



HOGG & DAVIS, Inc.

HOGG & DAVIS, INC.

3800 EAGLE LOOP • ODELL, OR 97044

TEL 541.354.1001 • FAX 541.354.1080

WWW.HOGGDAVIS.COM





# RENTAL EQUIPMENT

## THAT WORKS AS HARD AS YOUR CREW



NESCO isn't just a premier provider of utility rental equipment, but a leader in responsiveness and support for all customers. Dedicated rental and service teams, combined with one of the industry's largest rental fleets, ensure NESCO meets your job site needs.

**AERIAL > DIGGERS > CRANES > STRINGING EQUIPMENT**  
**UNDERGROUND > TOOLS & ACCESSORIES**



800-252-0043  
[www.NESCORENTALS.com](http://www.NESCORENTALS.com)





# Klein Tools'® AC/DC Digital Clamp Meter Provides Improved Usability and Viewability

Klein Tools (www.kleintools.com), for professionals since 1857, introduces a new AC/DC Digital Clamp Meter (CL380), bringing accessibly priced AC/DC True Root Mean Squared (TRMS) measurement capabilities to Klein Tools' product line. The CL380 Digital Clamp Meter offers the capability to measure current up to 400A AC/DC and also features a high-visibility reverse contrast LCD display for improved viewability in all lighting conditions. Additional applications include non-contact voltage testing, DC micro-Amp measurements, resistance, continuity, frequency, temperature, and more. Designed for general use in residential, commercial and light-industrial locations, the CL380's excellent functionality and value provides professionals with a best-in-class clamp meter option.



## Get Cool!



**Extend transformer life!**

**Increase transformer capacity up to 166%!**

- expert technical assistance
- low sound levels
- energy-efficient motors
- large inventory
- one-piece cast aluminum blades
- galvanized or stainless steel guards







**HERCULOCK**

Hercules Industries, U.S.A.®

# Solid Brass Padlocks

Hercules Industries, Inc. brings to you the most complete line of solid brass tumbler pin padlocks.

Our locks serve the needs of utilities, state and local governments, business, and agriculture. Precision crafted out of solid brass, our locks withstand inclement weather conditions, and are available with brass, stainless steel, and heat treated (HT) stainless steel shackles. Locks are available keyed alike or different, masterkeyed, and grand masterkeyed. We also can key our locks to most popular keyways (ie. Master, Corbin, Yale, Best, and others).

We are committed to competitive prices, fast delivery, and top quality.



**HERCULES INDUSTRIES, INC.**  
Manufacturer of HERCULOCK Padlocks  
P.O. Box 197 • Prospect, Ohio 43342  
Toll Free: 1-800-345-2590  
Fax: (740) 494-2274  
[www.HERCULOCK.com](http://www.HERCULOCK.com)



# WE HAVE THE ROPE TO GET THE JOB DONE.



800-358-7673

[www.bucrope.com](http://www.bucrope.com)

AC/DC Digital Clamp Meter, 400A Auto-Ranging (Cat. No. CL380)

- Delivers excellent functionality to Klein Tools' Clamp Meter product line:
- Clamp measures current up to 400A AC/DC
- Non-contact voltage tester integrated into the clamp jaw
- Test leads measure AC/DC voltage up to 600V, 40M $\Omega$  Resistance, DC microamps and millivolts, continuity, frequency, duty-cycle, capacitance and test diodes
- K-Type thermocouple probe measures temperature
- High-visibility reverse contrast LCD display provides improved viewability in all lighting conditions
- Auto-ranging True Root Mean Squared (TRMS) measurement technology for greater accuracy
- Max / Min, Rel / Zero and data hold capability
- Auto power-off after five minutes of non-use conserves battery life
- Low battery indicator and easily accessible battery compartment
- Rugged design stands up to jobsite demands with 6.6-foot (2m) drop protection as well as CAT III 600V, Class 2 and Double Insulation safety ratings
- Includes carrying case, test leads, K-type thermocouple probe, instruction manual and 3 x AAA batteries

"Klein Tools' Test and Measurement product line provides professionals with the solutions and capabilities needed to complete the various types of electrical testing performed on active jobsites," says Sean O'Flaherty, director of product management at Klein Tools. "Klein's CL380 delivers the ability to measure AC/DC current on an accessibly priced TRMS clamp meter. Furthermore, the high-visibility reverse contrast LCD display improves viewability in all lighting conditions from dimly lit work spaces to brightly lit surroundings."

For more information, visit [www.kleintools.com/new-products](http://www.kleintools.com/new-products) or search for #NewKleins on social media.

[www.kleintools.com/new-products](http://www.kleintools.com/new-products) •

# KEEP YOUR TEAM SAFE



With more than 7,700 cases in 2018 alone, OSHA consistently cites more companies for fall protection violations than any other issue.

## FREE DOWNLOADABLE FALL PROTECTION PLAN

Need a Fall Protection Plan? We've got you covered. Download our free, customizable Fall Protection Plan at <https://maltadynamics.com/fall-protection-plan/>.







# GOLIGHT

## Revolutionary Lighting Solutions

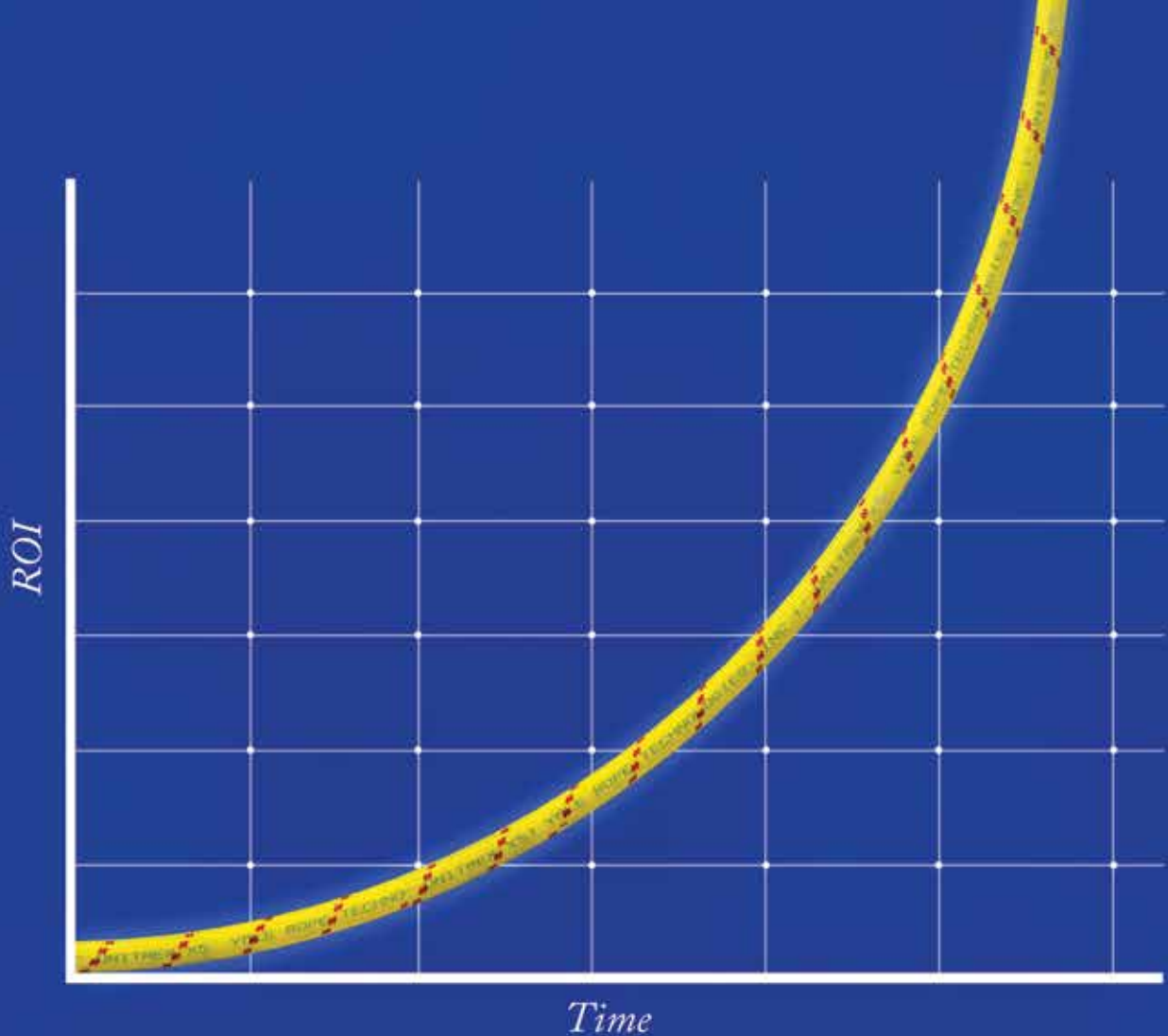


### Durable...Versatile...Powerful...GUARANTEED



When the power goes out we know we can rely on our nation's linemen to strap on their boots and march into the elements to get our electrical service back online. More often than not, that means battling wind, rain, snow and ice and doing so in the dark. In those conditions, light that can be dynamically directed where it is needed, when it is needed is an essential tool for safety and productivity. In both emergency situations and day to day operations Golight has proven to be a vital tool in extending work hours and increasing productivity. Golight has been a partner to the men and women who keep our lights on for almost 20 years and we are committed to seeing that relationship grow and develop.

◀ KOOZIES... BANDANNAS... DECALS... Send an email to [media@golight.com](mailto:media@golight.com) and let us know you saw our ad in "THE UTILITY SOURCE" and we will send you some Lineman branded merchandise!



## Unitrex XS™ Max Wear. Unmatched performance in the field and in the boardroom.

Electric line stringing is easier and more economical with Unitrex™. Made with a core of Honeywell Spectra®, it is up to 10 times lighter than steel, while delivering comparable strength. The urethane-coated polyester jacket provides excellent abrasion resistance for great productivity that lasts.

To learn more, visit [www.yalecordage.com](http://www.yalecordage.com)

**YALE CORDAGE**  
Performance. Passion. Possibilities.

77 Industrial Park Road | Saco, Maine 04072 | p (207) 282-3396, f (207) 282-4620



## Ad Index

Company	Pg.	Website
Atlantic Screen & Mfg., Inc.	2	<a href="http://www.atlantic-screen.com">www.atlantic-screen.com</a>
Buccaneer Rope	14	<a href="http://www.bucrope.com">www.bucrope.com</a>
Dominion Rubber Tracks	19	<a href="http://www.depparts.com">www.depparts.com</a>
Efficiency Production	15	<a href="http://www.efficiencyproduction.com">www.efficiencyproduction.com</a>
eMars Inc	28	<a href="http://www.emarsinc.com">www.emarsinc.com</a>
Fall Protection	13	<a href="http://www.fallpd.com">www.fallpd.com</a>
Golights	26	<a href="http://www.golight.com">www.golight.com</a>
Greaves	7	<a href="http://www.greaves-usa.com">www.greaves-usa.com</a>
Herculock	23	<a href="http://www.herculock.com">www.herculock.com</a>
Hogg Davis	20	<a href="http://www.hoggdavis.com">www.hoggdavis.com</a>
Keystone Electronics	9	<a href="http://www.keyelco.com">www.keyelco.com</a>
Krenz Vent	22	<a href="http://www.krenzvent.com">www.krenzvent.com</a>
Malta Dynamics	25	<a href="http://www.maltadynamics.com">www.maltadynamics.com</a>
Morooka USA	3	<a href="http://www.morookacarriers.com">www.morookacarriers.com</a>
MSA Safety	17	<a href="http://www.msasafety.com/safetyevaluation">www.msasafety.com/safetyevaluation</a>
Nesco	21	<a href="http://www.nesco.com">www.nesco.com</a>
Rayco	1	<a href="http://www.rayco.com">www.rayco.com</a>
Ring Power	11	<a href="http://www.ringpower.com">www.ringpower.com</a>
Terex	5	<a href="http://www.terex.com">www.terex.com</a>
Trencor	18	<a href="http://www.trencor.com">www.trencor.com</a>
TSE	BC	<a href="http://www.tes-international.com">www.tes-international.com</a>
TSI	10	<a href="http://www.tsissg.com">www.tsissg.com</a>
Universal Horizontal Directional Drilling	IBC	<a href="http://www.unihdd.com">www.unihdd.com</a>
Warehouse Equipment	8	<a href="http://www.warehouseequipment.com">www.warehouseequipment.com</a>
Yale Cordage	27	<a href="http://www.yalecordage.com">www.yalecordage.com</a>



## On Site Employee Verification

Bob Put In 9 Hours And 3 Minutes Of Work On Tuesday.  
**Stop Guessing. Start Verifying!**

Always Know Who, When and Where with eMars Compliant Client and RFID  
 Be Davis - Bacon Compliant In Minutes • Users Report 85% Savings of Money and Time • Alerts You of 30 Compliance Errors

Ph. 480-595-0466



eMarsinc.com

# POWER & TRACTION IN ACTION



**ACHIEVER**  
RT-02 DD DIGGER DERRICK

**ACHIEVER**  
DPM-52 TRACKED AERIAL

## TRACKED DIGGER DERRICKS & AERIALS

- 57' working height (aerial)
- Exclusive hydraulic fold-out/removable bucket (digger derrick)
- Can be towed on a 10 ton trailer behind a line truck
- Sets up to 65' poles / 24" diameter
- 2.25 psi ground pressure (loaded), 17,500 lbs, 134 hp
- Super stable 45° hydraulic radial outriggers
- The shortest production lead times in the industry



For more information or to schedule a demonstration contact UTV International today.

[2sales@utvint.com](mailto:2sales@utvint.com)

1-800-985-8665

[www.utvint.com](http://www.utvint.com)



# GREENMACHINE

CLEAN. QUIET.  
ALL ELECTRIC  
PULLING AND  
TENSIONING.



THE NEWLY DESIGNED DPT40E IS POWERED BY A REGENERATIVE ELECTRIC MOTOR, ELIMINATING THE NEED FOR DIESEL AND HYDRAULIC OIL.

FOR SALES INQUIRIES, PLEASE EMAIL US AT [SALES@TSE-INTERNATIONAL.COM](mailto:SALES@TSE-INTERNATIONAL.COM)

U.S. PATENT NOS. 8,322,689 B2 AND 9,178,340 B2

**TSE**  
INTERNATIONAL, INC.  
1-800-825-2402