

THE

UTILITYSOURCE

August 2020

Products and Services for Today's Electric, Telecom, and CATV Utilities

**Terex Utilities Launches
New eCommerce Platform**



**LineWise Introduces Pole
Stabilization System for
Concrete, FlowFill™
Pouring Applications**

REPAIR CONDUIT IN A SNAP!

- No Tape
- No Plastic Straps,
- No Metallic Straps

NO KIDDING!

Designed especially for
power, communications,
and fiber optics



1
Step 1: Remove
Damaged Conduit



2
Step 2: Cut Split
Duct Conduit to Fit



3
Step 3: Snap in
Place



4
Step 4: Attach
Adapters



5
Step 5: Finish Job
in Record Time



“The World Leader In Split Conduit Products”



Conduit Repair Systems, Inc.

The World Leader In Split Conduit Products

800-670-1804

fax: 435-673-8724

email: crs@conduitrepair.com

Please Visit Our Website at WWW.CONDUITREPAIR.COM

Rugged Dependability

STANDARD IN EVERY MACHINE WE BUILD!

Hogg & Davis has been proudly
manufacturing utility line equipment
for more than half a century.



Our trusted products are part
of the fleets and tool cribs of
nearly every investor-owned
power and communications
company in the United States
and Beyond.



HOGG & DAVIS, INC.

3800 EAGLE LOOP • ODELL, OR 97044

TEL 541.354.1001 • FAX 541.354.1080

WWW.HOGGDAVIS.COM

The logo consists of the letters 'H' and 'D' in a bold, white, sans-serif font. The 'H' and 'D' are connected at the top and bottom. The logo is set against a solid orange background.

HOGG & DAVIS, Inc.

PG 6 Terex Utilities Launches New eCommerce Platform

PG 8 LineWise Introduces Pole Stabilization System for Concrete, FlowFill™ Pouring Applications

PG 12 EPRI Test Site Validates Early Thermal Runaway Indicator

PG 22 Monthly Buyer's Guide

PG 24 Ad Index



Pg 12

THE UTILITYSOURCE

Products and Services for Today's Electric, Telecom, and CATV Utilities

Vol. 20 Issue 8

PUBLISHER

Glen Hobson
205-441-5591
glen@tipsmag.net

ADMINISTRATIVE DIRECTOR

Steven Hobson
steven@tipsmag.net

EDITOR

Brandon Greenhill
brandon@handfmedia.net

CREATIVE/ WEB DIRECTOR

Jacklyn Greenhill
jacklyn@handfmedia.net

Get Cool!



Extend transformer life!

Increase transformer capacity up to 166%!

- expert technical assistance
- low sound levels
- energy-efficient motors
- large inventory
- one-piece cast aluminum blades
- galvanized or stainless steel guards





quality engineered, performance tested

p.o. box 187 germantown, wisconsin 53022

262.255.2318

www.krenzvent.com

P.O. Box 1568 • Pelham, AL 35124
Phone: 205-441-5591 • Fax: 205-624-2181
www.theutilitysource.net
info@theutilitysource.net

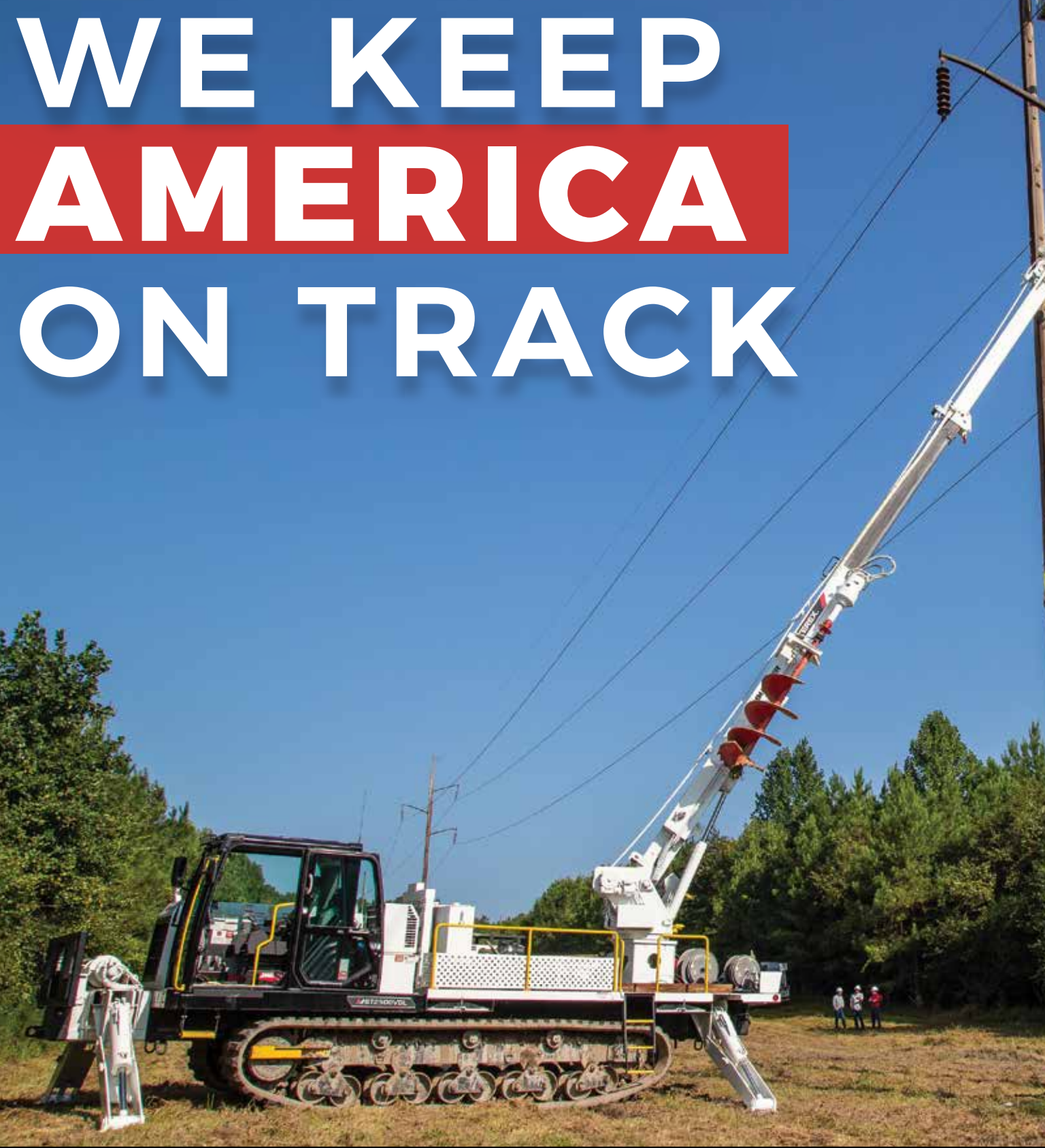


The Utility Source™ is published twelve times a year on a monthly basis by H & F Media, Inc. *The Utility Source*™ is distributed free to qualified subscribers. Non-qualified subscription rates are \$57.00 per year in the U.S. and Canada and \$84.00 per year for foreign subscribers (surface mail). U.S. Postage paid at Birmingham, Alabama and additional mailing offices.

The Utility Source™ is distributed to Power, Telcom and CATV Utilities and Utility Contractors throughout the USA. Publisher is not liable for all content (including editorial and illustrations provided by advertisers) of advertisements published and does not accept responsibility for any claims made against the publisher. It is the advertiser's or agency's responsibility to obtain appropriate releases on any item or individuals pictured in an advertisement. Reproduction of this magazine in whole or in part is prohibited without prior written permission from the publisher.

POSTMASTER: Send address changes to
H & F Media, Inc. P.O. Box 1568
Pelham, AL 35124
PRINTED IN THE USA

WE KEEP AMERICA ON TRACK



MOROOKA

UTILITY CARRIERS

Call: 800-365-7260

OR

Visit: morookacarriers.com



Terex Utilities Launches New eCommerce Platform

Terex Utilities has launched a new eCommerce platform to support all customers and give customers the type of online shopping experience today's buyers have come to expect.

This new eCommerce platform offers one-stop-shopping for tools and accessories used in the utilities industry and beyond. Many of these products had previously only been available through a traditional catalog. Hundreds of products—from climbing equipment to traffic safety gear and Terex Auger Tools—can be ordered. New customers can self-register for an account, place orders by credit card, view order status, track shipments, and see invoices.

For existing Terex customers including rental partners and dealers who previously had access to an eCommerce platform, the new platform comes with a host of new and upgraded features. Online parts manuals for many of our units are now browsable from this website and allow for simple Click-to-Cart functionality. In addition, parts are searchable by keyword, part number, and category—making

Making perfect connections has never been simpler. In fact, now it's a **SNAP!**

NEW *SNAP* Connectors from Greaves. A revolutionary compression connector concept that gets the job done with just a few turns of a standard wrench!

- ▶ Time-saving, easy installation
- ▶ Superior pull-out strength and conductivity
- ▶ No bulky and costly tools and dies



GREAVES

WE HAVE THE ROPE TO GET THE JOB DONE.



Buccaneer Rope
COMPANY

800-358-7673

www.bucrope.com

part identification or discovery easier than ever.

“Improving the customer experience is foundational to our organization. The changes we have made to our eCommerce platforms go beyond an upgraded look,” said Blake Dahle, Senior Manager, Digital Customer Experience. “We added functionality to simplify the entire process of finding and purchasing the parts customers need.”

For existing Terex account holders—request online access at <https://parts.terex.com/>

For new customer and retail sales—browse the catalogue at <https://myparts.terex.com/>

About Terex

Terex Corporation is a global manufacturer of lifting and material processing products and services delivering lifecycle solutions that maximize customer return on investment. Major Terex brands include Terex, Genie and Powerscreen. Terex solutions serve a broad range of industries, including construction, infrastructure, manufacturing, shipping, transportation, refining, energy, utilities, quarrying and mining. Terex offers financial products and services to assist in the acquisition of Terex equipment through Terex Financial Services. More information about Terex is available on its website: www.Terex.com, and on its LinkedIn page -- www.linkedin.com/company/terex and Facebook page -- www.facebook.com/TerexCorporation.

www.Terex.com •

ROME

Available in 10, 12, 14, and 16 foot widths



Manufacturing Heavy Duty Construction and Agricultural Equipment Since 1932

ROME Plow has been the premier name in heavy duty disc plows for over 87 years.

Available in 16, 18, 20, 24, and 30 foot widths



ROME has been manufacturing pivot dump and ejector scrapers for over 45 years for the construction and agricultural industries.



Available with 36 or 42" blades, and up to 20' wide

ROME also manufactures a full line of leveling scrapers (with and without gates) and haul road maintenance tools (with and without rollers)



Available in 18 and 22 yard versions

For more information on our products or for the closest authorized ROME dealer please contact us.

Available in 24, 28, 31, 34 and 37 Yards



770-748-4450 - www.romeplow.com

Steel Tracks available to fit any articulating tractor.

LineWise Introduces Pole Stabilization System for Concrete, FlowFill™ Pouring Applications





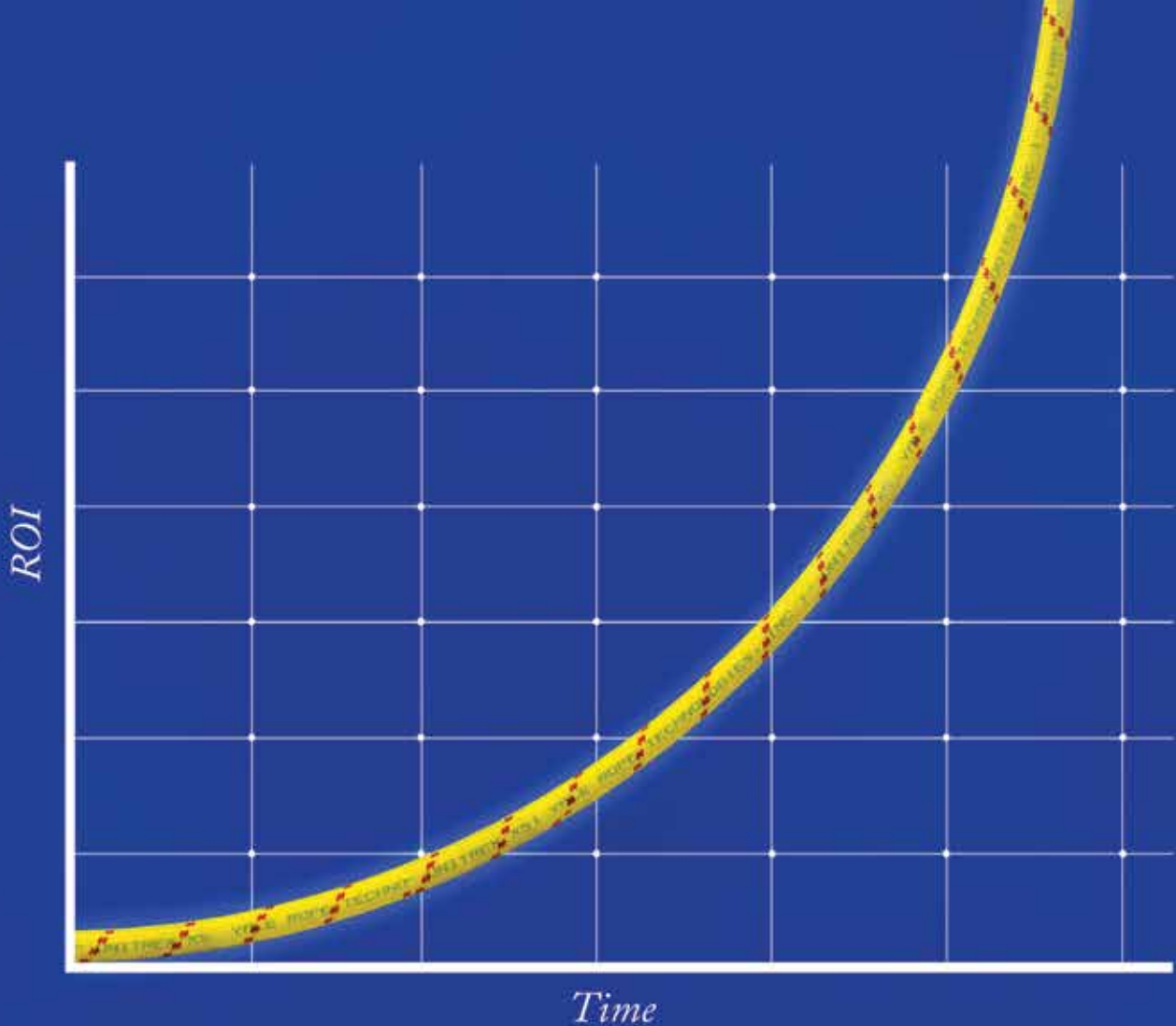
The patent-pending Direct Embed Pole Stabilization (DEPS) system from LineWise is a new bracing system for holding concrete or steel poles in place while pouring concrete or FlowFill™. This cost-effective solution offers a quick and easy setup that significantly reduces equipment and labor costs, in addition to other benefits, during the installation of direct embed poles.

The DEPS system consists of two adjustable pole braces for each pole that is being stabilized. The pole braces are first chained or strapped to the base section of a pole. Then, the anchor plates are staked into the ground, and the pole is then plumbed by simply extending or retracting the braces. The entire process can be completed in several minutes.

Compared to the traditional alternatives of using forklifts, telehandlers or deadman concrete anchors to support poles during construction, the DEPS system eliminates the cost of equipment rentals, machine maintenance, fuel and other various tools. The DEPS system offers a lower environmental footprint as well, as it helps cut jobsite emissions and results in fewer ruts created on right-of-ways due to less vehicle and equipment traffic.

Fully contracted, the DEPS system is 7.5 feet in length, allowing it to be transported in a pickup bed or on a gooseneck trailer. It requires no routine maintenance, provides a long service life and is made of 100-percent recyclable material.

LineWise is a division of Diversified Products. The company designs, engineers and manufactures a full line of utility products, including line lifters, insulated work platforms, phase lifters, transmission temporary conductor supports and the Buddy Bushing cross arm reinforcement system. For more information, contact LineWise, 1001 Webster Avenue, Waco, Texas 76706, phone 254-757-1177 or visit the website at www.line-wise.com •



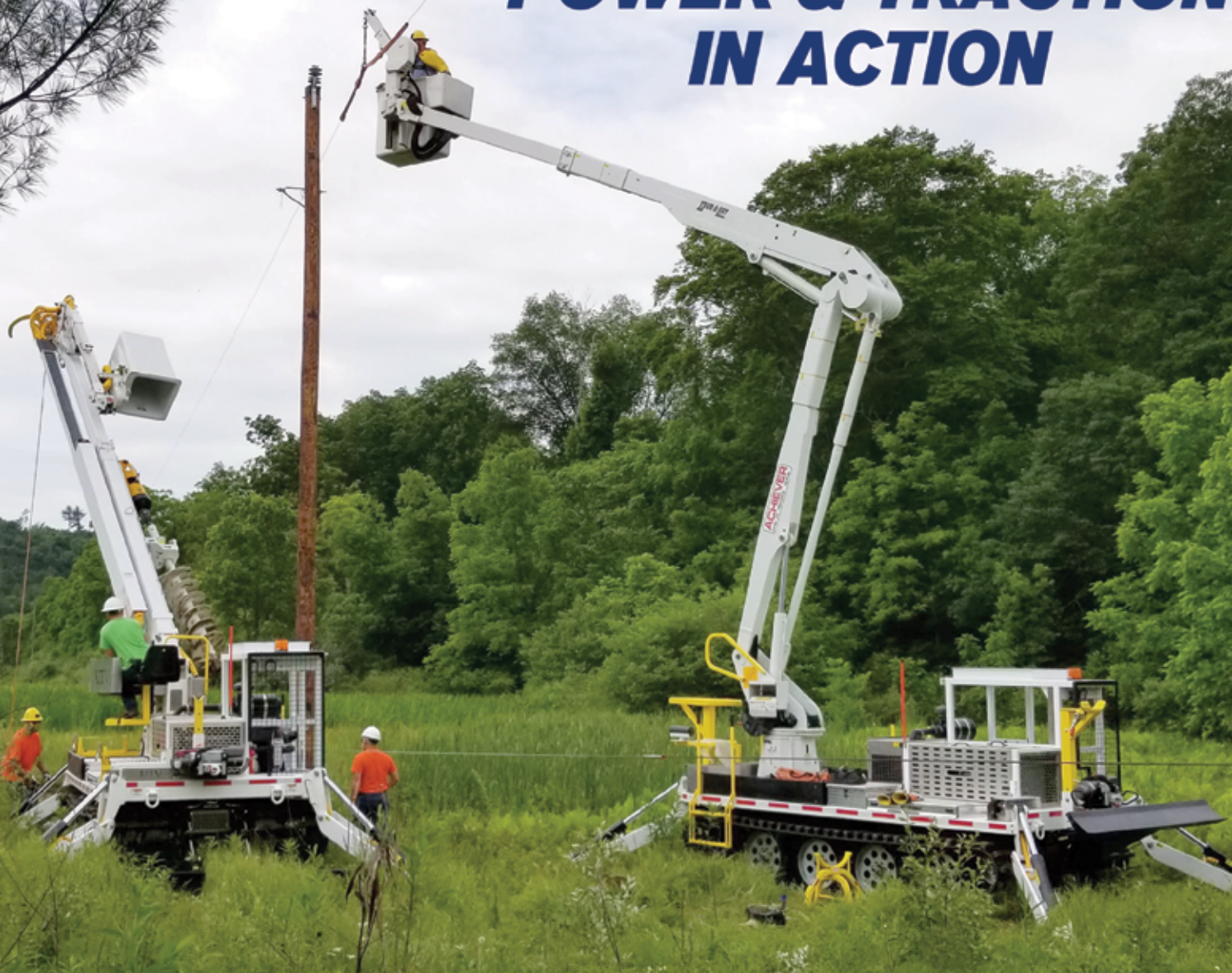
Unitrex XS™ Max Wear. Unmatched performance in the field and in the boardroom.

Electric line stringing is easier and more economical with Unitrex™. Made with a core of Honeywell Spectra®, it is up to 10 times lighter than steel, while delivering comparable strength. The urethane-coated polyester jacket provides excellent abrasion resistance for great productivity that lasts.

To learn more, visit www.yalecordage.com

YALE CORDAGE
Performance. Passion. Possibilities.

POWER & TRACTION IN ACTION



ACHIEVER
RT-02 DD DIGGER DERRICK

ACHIEVER
DPM-52 TRACKED AERIAL

TRACKED DIGGER DERRICKS & AERIALS

- 57' working height (aerial)
- Exclusive hydraulic fold-out/removable bucket (digger derrick)
- Can be towed on a 10 ton trailer behind a line truck
- Sets up to 65' poles / 24" diameter
- 2.25 psi ground pressure (loaded), 17,500 lbs, 134 hp
- Super stable 45° hydraulic radial outriggers
- The shortest production lead times in the industry



For more information or to schedule a demonstration contact UTV International today.

2sales@utvint.com

1-800-985-8665

www.utvint.com



EPRI Test Site Validates Early Thermal Runaway Indicator

Duke Energy safeguards Li-ion Battery Energy Storage Systems with off-gas detection minutes before thermal runaway, allowing action to deter potential cascading failure

As an independent, nonprofit organization, the Electric Power Research Institute (EPRI) collaborates with the electricity sector to make electric power safe, reliable, affordable, and environmentally responsible. As part of that mandate, EPRI conducts research, development, and demonstration projects for the benefit of the public in the United States and internationally. This often entails performing trials

SALE

UNI UNIVERSAL
HORIZONTAL DIRECTIONAL DRILLING

REAMERS, SONDE HOUSINGS, AND DRILL BITS

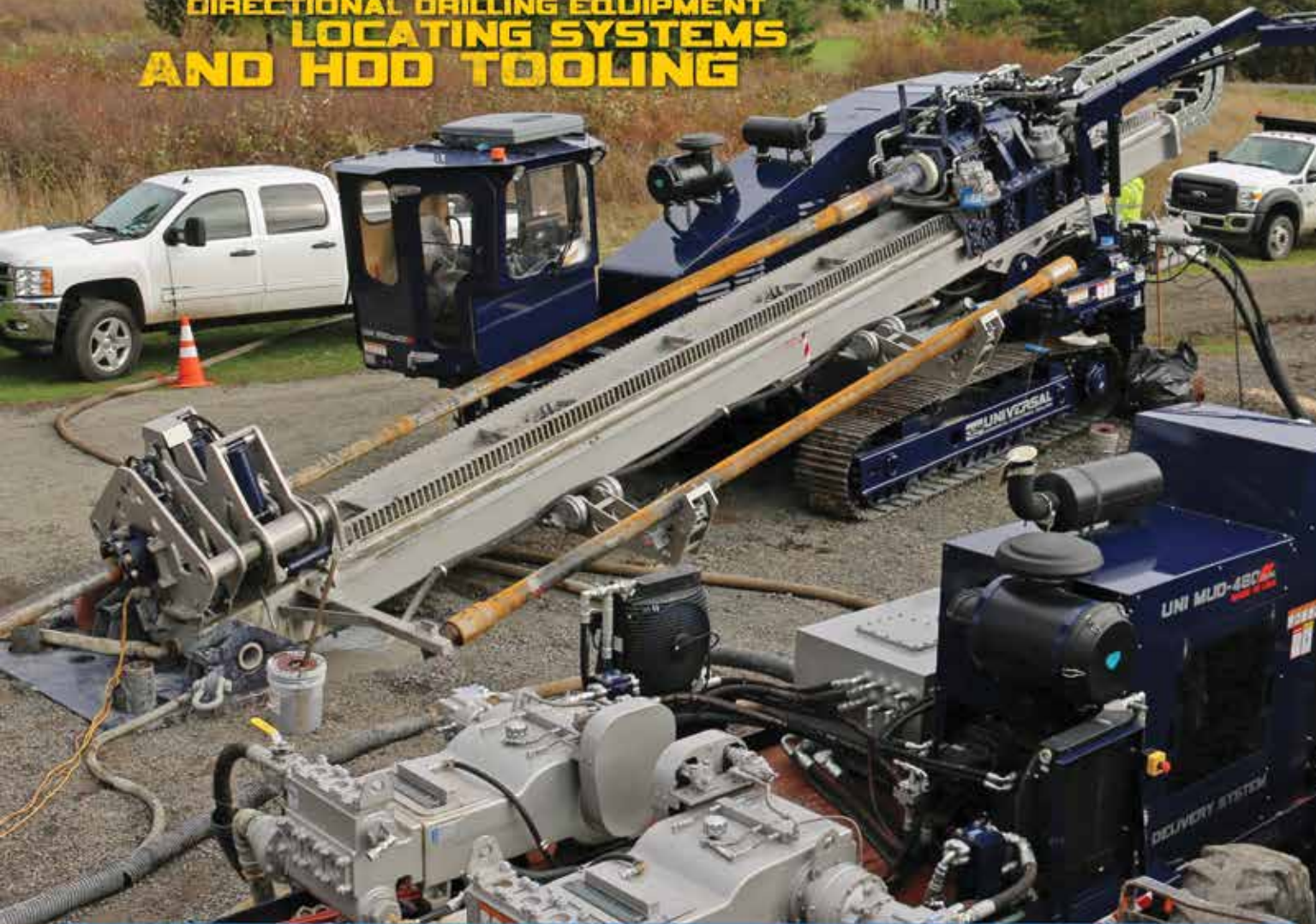
DRILL PIPES



MUD SYSTEMS



**FULL LINE OF
CUSTOM HDD RIGS**
DIRECTIONAL DRILLING EQUIPMENT
LOCATING SYSTEMS
AND HDD TOOLING



HDD RIGS | MUD SYSTEMS | LOCATING SYSTEMS | DRILL PIPES | REAMERS | HDD TOOLING | MUD SUPPLIES | ACCESSORIES

1221 FLEX CT, LAKE ZURICH, IL USA | TEL: 847-955-0050 | WEB: WWW.UNIHDD.COM | EMAIL: INFO@UNIHDD.COM

utilizing promising products and technologies, in cooperation with leading utilities.

In recent years, EPRI has focused attention on evaluating and testing technologies to increase the safety of Battery Energy Storage Systems (BESSs). Comprised of an interconnected series of Lithium-ion (Li-ion) batteries, BESSs help utilities provide reliable back-up power, avoid peak demand charges, and store energy generated by renewable power systems.

However, despite the significant benefits, BESSs are subject to thermal runaway conditions that occur when excess heat caused by defects or mechanical failures from damage or improper operation of the system creates a reaction that further increases the temperature. If left unchecked by built-in system protections or the Battery Management System (BMS), this process can continue to drive up temperature and pressure until the battery cell ruptures, which can cause fires in affected and adjacent cells.

For this reason, EPRI is conducting trial tests with multiple utilities of an advanced early warning system that can detect an off-gassing event as a precursor to thermal runaway up to 30 minutes prior to a cascading failure. This distinctive and recognizable early warning sign enables the problem to be mitigated or the system shut down before thermal runaway can even begin.

“Once a Li-ion BESS goes into thermal runaway you cannot stop it [in that cell] – your goal is to try to stop the propagation of heat and thermal runaway to adjoining cells,” explains retired NYC firefighter Paul Rogers, a co-founder of Energy Stor-

age Response Group (ESRG), a national fire safety consultancy with nearly 50 years of combined experience that specializes in the risk assessment, investigation, and safety testing of energy storage systems.

While still with the NYC Fire Department, Rogers oversaw the implementation of the department’s first response protocols for how to deal with energy storage systems, and now he consults nationally on this as well as safety testing.

According to Rogers, while a Battery Management System (BMS) can provide data and shut the BESS down, depending on the safety integrity levels of the BMS component there are times when the BMS can miss critical indicators or malfunction. Because of this, Rogers recognizes the need for a separate, redundant system that can indicate the potential of thermal runaway before it occurs so the BESS can be shut down to prevent it.

“You need layers of protection to reduce your risk,” says Rogers, who recommends incorporating an additional early warning system besides the BMS.

In looking to improve energy storage system safety in NYC, Rogers was introduced to a product called Li-ion Tamer that provides advanced warning before thermal runaway in lithium ion BESSs. To Rogers’ knowledge, no other product accomplishes this in a way that Lion Tamer technology does.

The early detection of thermal runaway relies on four sequential stages of Li-ion battery failure, according to Steve Cummings, Director of the Sensors Business Unit at Nexceris, an Ohio-based

MORE EQUIPMENT OWNERS RELY ON US.

We're proud that Dominion
Rubber Tracks are the

**#1 SELLING
RUBBER TRACK**

brand in America.

CALL US TODAY
TO GET THE BEST
PRICE ON
RUBBER TRACKS,
YANMAR PARTS
& UNDERCARRIAGE
PARTS

800-365-7260

DOMINION
Equipment Parts

depparts.com

Ashland, VA » Jacksonville, FL » Dallas, TX » Cincinnati, OH » Portland, OR »
Sacramento, CA » Schenectady, NY » Leduc, AB



developer of gas sensors and monitors. The company worked with the U.S. Navy a decade ago to develop an off-gassing detection technology for Li-ion BESSs that would later be commercialized into the Li-ion Tamer product, which is compatible with all Li-ion chemistries.

“A Li-ion battery cell first begins to fail when it is subjected to an abuse factor like heat, over-voltage, etc.,” says Cummings. “The second step is off-gassing. The third step is smoke, and the fourth step is fire. But smoke and fire often occur almost simultaneously. So, by the time smoke is detected, thermal runaway has typically already begun.”

Off-gassing usually occurs due to a breakdown of a Li-ion battery cell electrolyte, as a result of pressure buildup. Later, temperature increases, smoke is emitted and then fire breaks out.

To enable off-gassing detection at the earliest stage of a battery event after the initial abuse, the Li-ion Tamer system offers a battery off-gas monitor and sensor network designed specifically for lithium ion batteries.

Fortunately, EPRI is currently testing Li-ion Tamer at several test sites. This includes Duke Energy’s Emerging Technology Innovation Center in North Carolina, which has validated the system’s ability to detect even minute traces of off-gassing as a precursor to thermal runaway minutes before it occurs, allowing action to deter potential cascading failure. Based on this success, EPRI member Duke Energy is implementing the technology and making it a standard practice.

Duke Energy (NYSE: DUK), a Fortune 150 company headquartered in Charlotte, N.C., is one of the largest energy holding companies in the U.S. The company provides electricity to 7.7 million retail

WE LISTEN. WE RESPOND. WE DELIVER.

FOCUSED ON BEING YOUR STRATEGIC PARTNER – DELIVERING ROBUST EQUIPMENT AND LIFECYCLE SOLUTIONS.



Auger Drills



Digger Derricks



Aerial Devices



Parts & Service Support

Everything we do at Terex Utilities starts with YOU – our customer.

We listen to your challenges and needs. We work to get to know you – and what you need in order to get the job done. The Terex team is committed to delivering reliable equipment, innovative technology, quality service as well as parts and auger tooling. The company has been the leader in technology and innovation in the electric utility industry for more than 70 years. We are proud of our history and excited for what's to come.

Give us a call at 844-TEREX-4U for your equipment, service and parts needs.

www.terex.com/utilities



WORKS FOR YOU.™

electric customers in six states, serving an estimated 24 million people. It also provides natural gas to more than 1.6 million customers in five states, and operates wind and solar power facilities in 14 states.

According to Tom Fenimore, currently Duke Energy Business Development Manager assisting in deploying new leading-edge technologies, the company has tested energy storage for over a decade, and was approached by EPRI and Nexceris as a test site for this reason.

“We were educating ourselves in lithium ion energy storage, in deterring thermal runaway events, when we had the opportunity to work with Nexceris and install their off-gassing detection technology [in a BESS], which provides early detection of thermal runaway so it can be deterred,” says Fenimore.

According to Fenimore, at the Mount Holly, North Carolina site, a pre-production version of Li-ion Tamer was initially tested in a BESS and improvements were later incorporated into a retrofitted production version. Today, Li-ion Tamer is utilized and continues to be tested in a BESS in a 20-foot container that is professionally developed and built for energy storage. The BESS is rated at 650 KWH, and can discharge roughly 350 KWH of energy. It has six racks of lithium ion batteries that are used daily in the operation of the micro grid that supports the Mount Holly Technology Innovation Center.

“We take a proactive approach to energy storage safety that involves implementing layers of protection,” says Fenimore.

Fenimore states the first line of defense is the battery management system (BMS) because it is the system that manages the charging and discharging of the batteries. That is the first system that can sense whether an out of bounds condition exists within a battery cell. Since it monitors voltage and temperature, it has the first opportunity to put the battery into a safe state should an event occur.

“The next level of technology deployed inside our BESS systems is Nexceris Li-ion Tamer, which is deployed inside the container to sense whether a battery cell has gone into a condition where it off gases,” says Fenimore. “That off gas event is a direct indication that the battery is in a compromised, abnormal condition. At that point, we take that signal and shut the battery down, disconnect the battery from the grid, ventilate and cool the battery, as well as alert people so proper maintenance can be done to address the problem.”

Fenimore says that Duke Energy has participated in offsite disruptive testing by actively placing battery cells into a condition of thermal runaway under controlled conditions.

“We have seen from testing that we typically have early notification on the order of minutes that an event has occurred [before thermal runaway] when even seconds can make a difference,” says Fenimore. “We want to take advantage of that capability wherever we can to protect the public and the capital asset we are deploying.”

According to Fenimore, Duke Energy has projects built or planned across six states that use the technology.



RENTAL EQUIPMENT THAT WORKS AS HARD AS YOUR CREW

NESCO isn't just a premier provider of utility rental equipment, but a leader in responsiveness and support for all customers. Dedicated rental and service teams, combined with one of the industry's largest rental fleets, ensure NESCO meets your job site needs.

**AERIAL > DIGGERS > CRANES > STRINGING EQUIPMENT
UNDERGROUND > TOOLS & ACCESSORIES**



800-252-0043
www.NESCORENTALS.com



“Nexceris Li-ion Tamer technology is standard in our BESS safety specifications and we are specifying it moving forward,” says Fenimore. “The BESSs are typically deployed alongside solar, wind, or combinations of solar and traditional generators. The BESSs meet regulatory mandates for a Non-Wires Alternative because they do not require building additional distribution or transmission lines to get power to where it needs to go.”

For utilities and other stake holders, when it comes to safely integrating new energy storage technology into municipal code, national safety consultant Paul Rogers of ESRG highlights the importance of adding adequate safeguards to avoid any incidents that could derail achieving more widespread support.

According to Rogers, back in the 1970s in NYC there was an explosion from a liquefied natural

gas (LNG) facility that had nothing to do with LNG directly. “Still, since then to this day, NYC has had a moratorium on LNG that prohibits new projects to be installed into the city without a variance because the fire department will not allow it,” says Rogers.

The lesson, according to Rogers, is one that the battery energy storage industry should take to heart when it comes to rolling out lithium ion BESS technology: taking the time to fully test and implement safe equipment, methods and procedures always pays off in the end.

For more info, contact Nexceris: (614) 842-6606; visit <https://nexceris.com>; or write to Nexceris at 404 Enterprise Drive, Lewis Center, OH 43035, USA.

www.nexceris.com •



MADE FOR **MORE** TO KEEP PACE WITH **YOU**



You begin each day before dawn with a drive and determination to do **more** than the day before. When you move at this pace, you know to do more you need equipment that is made for more. That's why our utility line and land clearing equipment, like our **Forestry Mulchers and Aerial Trimmers**, is built from the ground up to meet your needs, delivering:

More Power and Production
Lower Operating Costs
Greater Reliability
Better Safety Features
Superior Operator Comfort and Control

If you're ready to operate equipment that's made to keep pace with you, then we invite you to go to morbarkdealers.com to find your local authorized Morbark or Rayco dealer. Your dealer will work with you to assess your needs now and in the future, as well as offer equipment recommendations, financing options, wear parts and service if you should ever need it.

Equipment is available for **SALE** or **RENT**.



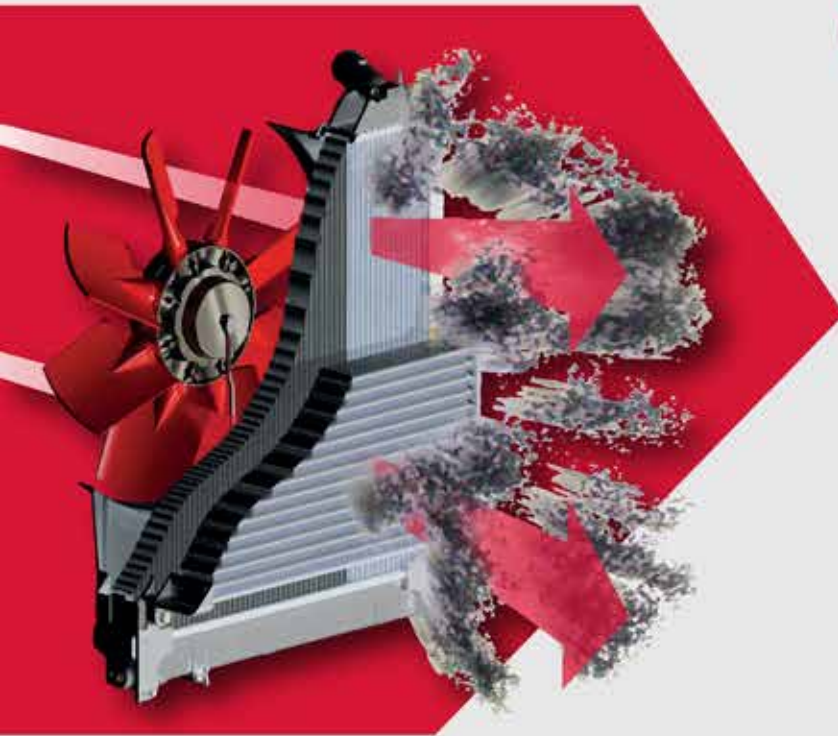
RAYCO
BY MORBARK

Monthly Buyer's Guide

- **Buccaneer Rope**
22319 Alabama Hwy.79
Scottsboro, Al 35768
800-358-7673
www.bucrope.com
- **Cleanfix Reversible Fans**
250 Wright Blvd.
Stratford, ON, CN N4Z1H3
866-489-3267
www.cleanfix.org
- **Conduit Repair**
761 Enterprise Dr. # 1
St. George, UT 84790
800-670-1804
www.conduitrepair.com
- **Greaves USA**
30 Industrial PK.
Centerbrook, CT. 06409
800-243-1130
www.greaves-usa.com
- **Hogg Davis**
3800 Eagle Loop
Odell, OR. 97031
855-883-4909
www.hoggdavis.com
- **Manitex USA**
3000 S. Austin Av.
Georgetown, TX. 78626
877-314-3390
www.manitex.com
- **M.B. Crushers**
8730 Technology Way
Reno, NV. 89521
855-MBCRUSH
www.mbcrusher.com
- **Morooka USA**
11191 Air Park Rd.
Ashland, VA. 23005
www.morooka.com
- **Morbark**
8507 S. Winn RD.
Winn, MI. 48896
800-831-0042
www.morbark.com
- **Ring Power**
9901 Ringhaven DR.
Orlando, FL. 32824
407-855-6195
www.ringpower.com
- **Rome Plows**
475 N.6th. St.
Cedartown, GA. 30125
770-748-4450
www.romeplow.com
- **Terex Utilities**
1901 -14th AV. N.W.
Watertown, SD. 57201
800-233-2972
www.terex.com
- **U.T.V. INTERNATIONAL**
8850 Danley Rd.
Quebec, CN. H4T1M4
514-345-0990
www.utvint.com
- **Yale Cordage**
77 Industrial Park Rd.
Saco, ME. 04072
207-282-3396
www.yalecordage.com

CLEANFIX.ORG

Reversible Fans For Radiator Cleaning



CLEAN RADIATORS

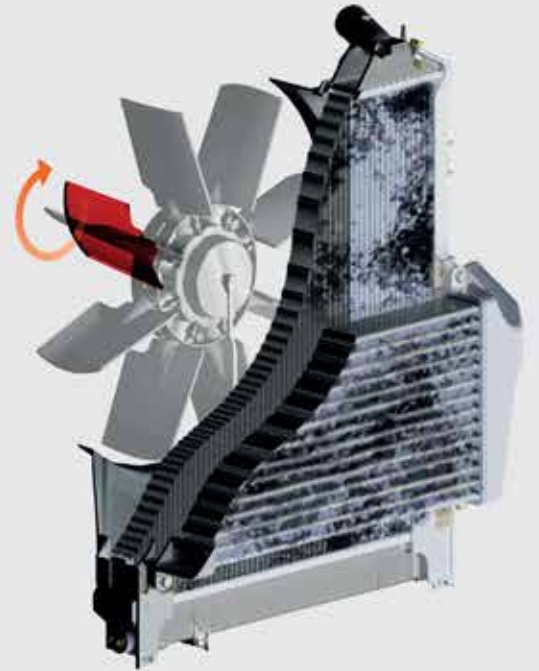
= Increases Power 

= Increases Operator Comfort 

= Reduces Downtime 

= Saves Fuel 

More than you think!



web cleanfix.org

youtube



cleanfixgf

facebook



CleanfixReversibleFans

Ad Index

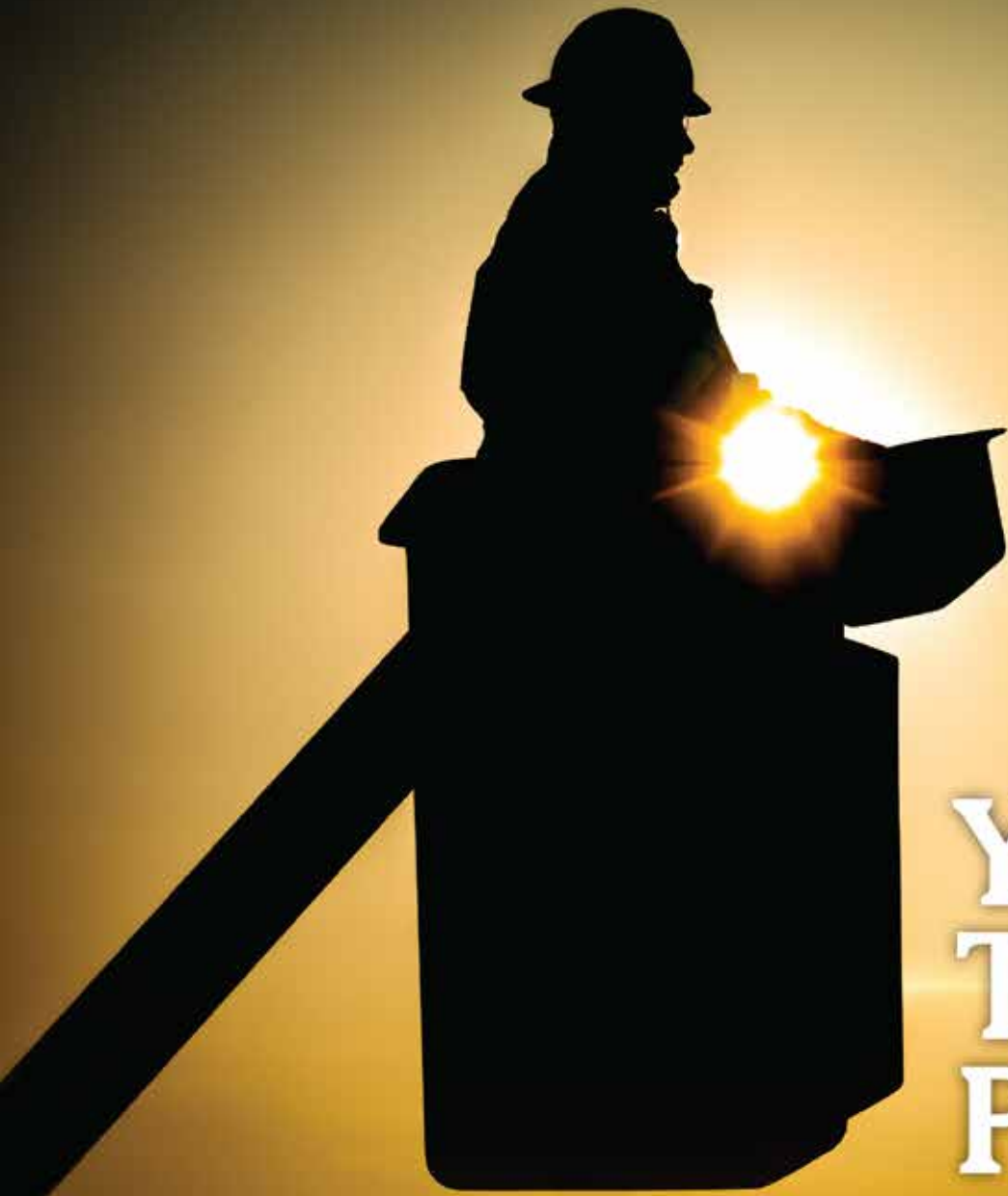
Company	Pg.	Website
Buccaneer Rope	6	www.bucrope.com
Clean Fix	23	www.cleanfix.org
Conduit Repair	IFC	www.conduitrepair.com
Cretex Seals	BC	www.cretexseals.com
Dominion Rubber Tracks	15	www.depparts.com
eMars Inc	24	www.emarsinc.com
Greaves	5	www.greaves-usa.com
Hogg Davis	1	www.hoggdavis.com
Krenz Vent	2	www.krenzvent.com
Morooka USA	3	www.morookacarriers.com
Nesco	19	www.nesco.com
Rayco	21	www.rayco.com
Ring Power	IBC	www.ringpower.com
Rome Plow	7	www.romeplow.com
Terex	17	www.terex.com
Universal Horizontal Drilling	13	www.unihdd.com
UTV	11	www.utvint.com
Yale Cordage	10	www.yalecordage.com

On Site Employee Verification

Bob Put In 9 Hours And 3 Minutes Of Work On Tuesday.
Stop Guessing. Start Verifying!

Always Know Who, When and Where with eMars Compliant Client and RFID
 Be Davis - Bacon Compliant in Minutes • Users Report 85% Savings of Money and Time • Alerts You of 30 Compliance Errors

Ph. 480-595-0466  eMarsinc.com



Your Trusted Partner.

Partnering with Ring Power gives you access to a vast range of jobsite-tough products to round out your fleet. Ring Power carries machines from dozens of manufacturers to ensure you always have access to the right tools for your job.

Short-term, long-term or rental-purchase options available.



1-844-766-RENT • Utility.RingPower.com



Expanded Polypropylene Grade Ring System



THE FASTEST AND LIGHTEST GRADE ADJUSTMENT SYSTEM.



OVER 175,000 INSTALLED

Used for more than a decade in the municipal sewer industry Cretex Specialty Products is now making our Pro-Ring expanded polypropylene (EPP) grade system available to power utilities and the telecom industry. These rings are light weight, yet traffic rated and come in varying thicknesses from $\frac{3}{4}$ " to 6" and we offer an angled or tapered ring as well. Our newest size has a 36" ID x 46" OD. Custom made sizes available.

AVAILABLE IN RECTANGULAR AND
SQUARE SHAPES



800-345-3764 info@cretexseals.com www.cretexseals.com