

THE

February 2013

UTILITYSOURCE

Products and Services for Today's Electric, Telecom, and CATV Utilities



Life on the
Road with
Diversified
Products

Making Aerial
Operators Safer
with Pelsue

DUR-A-LIFT®



Reaching New Heights

- 57' working height
- 1000# jib capacity with 180 degree rotating basket
- Up to 600# basket capacity
- No CDL License Required
- 1 ton front axle payload available
- 3 ton rear axle payload available
- Single set of outriggers - narrow footprint Low initial cost
- Shorter Wheelbases available

Visit us at: www.dur-a-lift.com

**SCHEDULE A
DEMONSTRATION TODAY!
(877) 4-DURALIFT**



Dur-A-Lift Inc.
877-4DURALIFT
www.dur-a-lift.com
sales@dur-a-lift.com

Nobody's got it all...



...BUT WE COME PRETTY DARN CLOSE.

TALLMAN EQUIPMENT

A worldwide supplier of tools to the electric utility industry.

PHONE 877-860-5666

WWW.TALLMANEQUIPMENT.COM

4

Our New Promise: Every Issue Better Than The One Before

12

Pelsue is introducing a new product for the safety of aerial lift operators.

16

Molykote® brand product from Dow Corning lubricates 'The Coldest Journey' trans-Antarctic expedition

18

Quality Transmission Components Announces the Donation of Components for ASABE 1/4 Scale Tractor Competition

22

Guidelines For Using Consecutively Numbered Tags In A Random Manner

28

Industry News

32

Ad Index

Cover Art Provided By Terex Utilities



THE UTILITYSOURCE

Products and Services for Today's Electric, Telecom, and CATV Utilities

GROUP PUBLISHER

Jim Barnhill
205-733-1343
jim@handfmedia.net

PUBLISHER

Ed Bauer
ed@handfmedia.net

V.P. OF SALES

Bart Beason
205-733-1342
bart@tipsmag.net

EDITOR

Brandon Greenhill
205-733-4343
brandon@tipsmag.net

CREATIVE DIRECTOR

Jacklyn Hobson
jacklyn@handfmedia.net

WEB DESIGNER

Danny Thompson
danny@handfmedia.net

FACILITATOR/ HEAD COORDINATOR

Steven Hobson
steven@tipsmag.net

CEO

Christy Hobson

PRESIDENT

Glen Hobson



Executive and Advertising Offices

2070 Valleydale Rd, Suite # 6

Hoover AL 35244

toll free: 866.981.4511

phone: 205-441-5591 fax: 855-662-2172

www.theutilitysource.com • glen@tipsmag.net

The Utility Source™ is published eleven times a year on a monthly basis by H&F Media Group, Inc., 2070 Valleydale Rd, Hoover AL 35244 USA. The Utility Source™ is distributed free to qualified subscribers. Non-qualified subscription rates are \$57.00 per year in the U.S. and Canada and \$84.00 per year for foreign subscribers (surface mail). U.S. Postage paid at Birmingham, Alabama and additional mailing offices.

The Utility Source™ is distributed to qualified owners and managers in the utility industry. Publisher is not liable for all content (including editorial and illustrations provided by advertisers) of advertisements published and does not accept responsibility for any claims made against the publisher. It is the advertiser's or agency's responsibility to obtain appropriate releases on any item or individuals pictured in an advertisement. Reproduction of this magazine in whole or in part is prohibited without prior written permission from the publisher.

POSTMASTER: Send address changes to H&F Media Group, Inc., P.O. Box 382315 Birmingham, Alabama 35238-2315

PRINTED IN THE USA

Media Sponsor For:



CLEARLY in Control



Achieve Productivity, Safety & Control

The Jarraff All-Terrain Tree Trimmer puts you in control of productivity, profits and safety. With unmatched capabilities in the field, the Jarraff All-Terrain Tree Trimmer has revolutionized. High-End Key maintenance making crews more productive and efficient, while adding new levels of safety and control to the industry.

The Jarraff All-Terrain Tree Trimmer can outperform conventional trimming techniques of a conventional skid steer loader. Productivity can run more to the bottom line.

Take control of your ROW Maintenance operations with the Jarraff All-Terrain Tree Trimmer.

- ROPS, FOPS & OPS Certified Cab
- Wheeled & Track Models Available
- 20-ft Cutting Height
- SED-Regulated Range of Motion
- Over 30 Years of Experience

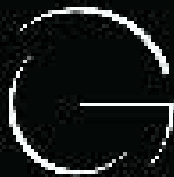
www.jarraff.com

800.767.7112



JARRAFF
Industries, Inc.





GOLIGHT™

If it happens at night...



Golight/RadioRay - Halogen

- ▶ NEW - LED Inset Available (#15444)
- ▶ 370° Rotation x 135° Tilt
- ▶ Portable or Permanent Mount
- ▶ 2 Year Limited Warranty
- ▶ Wireless or Hard-Wired Remote Control

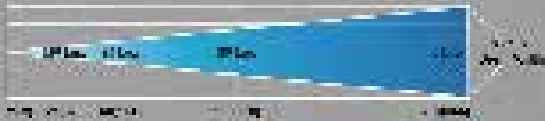


Part #	Mount Type	Remote Mount
47000000 47000000 47000000 47000000	Standard Mount Standard Mount	Wireless Inset Wireless Inset
47000000 47000000 47000000 47000000	Standard Mount Standard Mount	Wireless Inset Wireless Inset

Stryker - Halogen



- ▶ NEW - LED Inset Available (#15433)
- ▶ 370° Rotation x 135° Tilt
- ▶ Portable or Permanent Mount
- ▶ 5 Year Limited Warranty
- ▶ Wireless or Hard-Wired Remote Control



Part #	Mount Type	Remote Mount
47000000 47000000 47000000 47000000 47000000 47000000	Standard Mount Standard Mount	Wireless Inset Wireless Inset
47000000 47000000 47000000 47000000 47000000 47000000	Standard Mount Standard Mount	Wireless Inset Wireless Inset

Enter to

WIN A FREE GOLIGHT

<http://www.golight.com/enter.php>

Light provided by Golight Inc & The Utility Source... Drawing - March 12th, 2013

THE UTILITYSOURCE

Specialized equipment for utility and construction markets





LIGHTING THE WAY

800.557.0098 | www.golight.com

Golight/RadioRay - LED | Golight Also Available in HALOGEN



- ▶ 1.2 Mile Effective Range
- ▶ 370° Rotation x 135° Tilt
- ▶ Portable or Permanent Mount
- ▶ 3 Year Limited Warranty
- ▶ Wireless or Hard-Wired Remote Control



Part	Mount Type	Mount Dimensions
GR1400 (120° Beam)	Mag. Lock (120° Beam)	6 1/2" x 10 1/2" x 10 1/2"
GR1400 (135° Beam)	Structure Mount	6 1/2" x 10 1/2" x 10 1/2"
GR1400 (150° Beam)	Structure Mount	6 1/2" x 10 1/2" x 10 1/2"
GR1400	Hard-Wired (120° Beam)	6 1/2" x 10 1/2" x 10 1/2"

Stryker - HID | Stryker Also Available in HALOGEN & LED



- ▶ 1 Mile Effective Beam Distance
- ▶ 370° Rotation x 135° Tilt
- ▶ Portable or Permanent Mount
- ▶ 5 Year Limited Warranty (Year Ballast)
- ▶ Wireless or Hard-Wired Remote Control

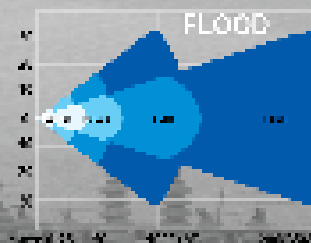


Part	Mount Type	Mount Dimensions
SR1000 (120° Beam)	Mag. Lock (120° Beam)	6 1/2" x 10 1/2" x 10 1/2"
SR1000 (135° Beam)	Structure Mount	6 1/2" x 10 1/2" x 10 1/2"
SR1000 (150° Beam)	Structure Mount	6 1/2" x 10 1/2" x 10 1/2"

GXL - LED



- ▶ 10 Year Warranty
- ▶ Floodlight Output: 6000 Max Lumens
- ▶ Spotlight Intensity: 110,000 Candela
- ▶ Quick Menu Adjustment
- ▶ Internal Thermal Management
- ▶ Multiple Illumination Options: Spot, Flood, IR
- ▶ Shock-Proof, Solid State Lighting
- ▶ IP 67 Rating, Instant On
- ▶ 94% Optical Efficiency



Part	Light Type	Mount
GXL1	Spot	Mag. Lock
GXL2	Flood	Structure
GXL3	Spot	Structure

If it happens at night...

...It happens with GOLIGHT!!





Our New Promise: Every Issue Better Than The One Before

As editor, I am excited to tell you about the changes that we have in store for The Utility Source. We have recently launched a multi-phase plan to further improve the design, organization, content and delivery of our magazine both online and in print.

The first phase of this plan is a redesign of the website. This will include the development of exclusive online content, some of these features will include: how-to videos, instructional and educational offerings as well as designing a user friendly interface.

Coinciding with this digital overhaul is a reorganization of the information you are now holding in your hands. We have introduced departments into the magazine making it easier to find the information that you care about quickly and easily.

I want your help with the improvement of the next phase. We are on the search for industry voices who can speak with authority on topics covered in our various departments including Safety, Tools and Equipment, Fleet Management, Education and Certification just to name a few.

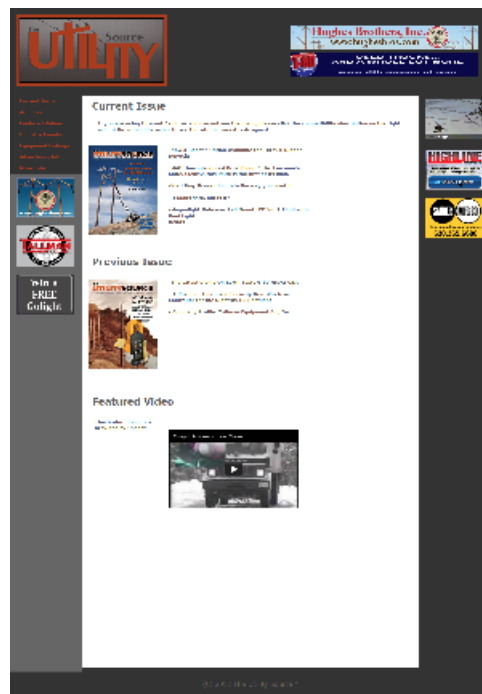
If you would like to contribute your knowledge as we work to move into the next phase, please submit your ideas to me at: brandon@tipsmag.net.

This is the second of eleven issues to be published this year. Be sure to check out our editorial calendar for a list of our upcoming topics.

Our goal is to become the premier publication serving Power, Telecom, CATV utilities and associated contractors.

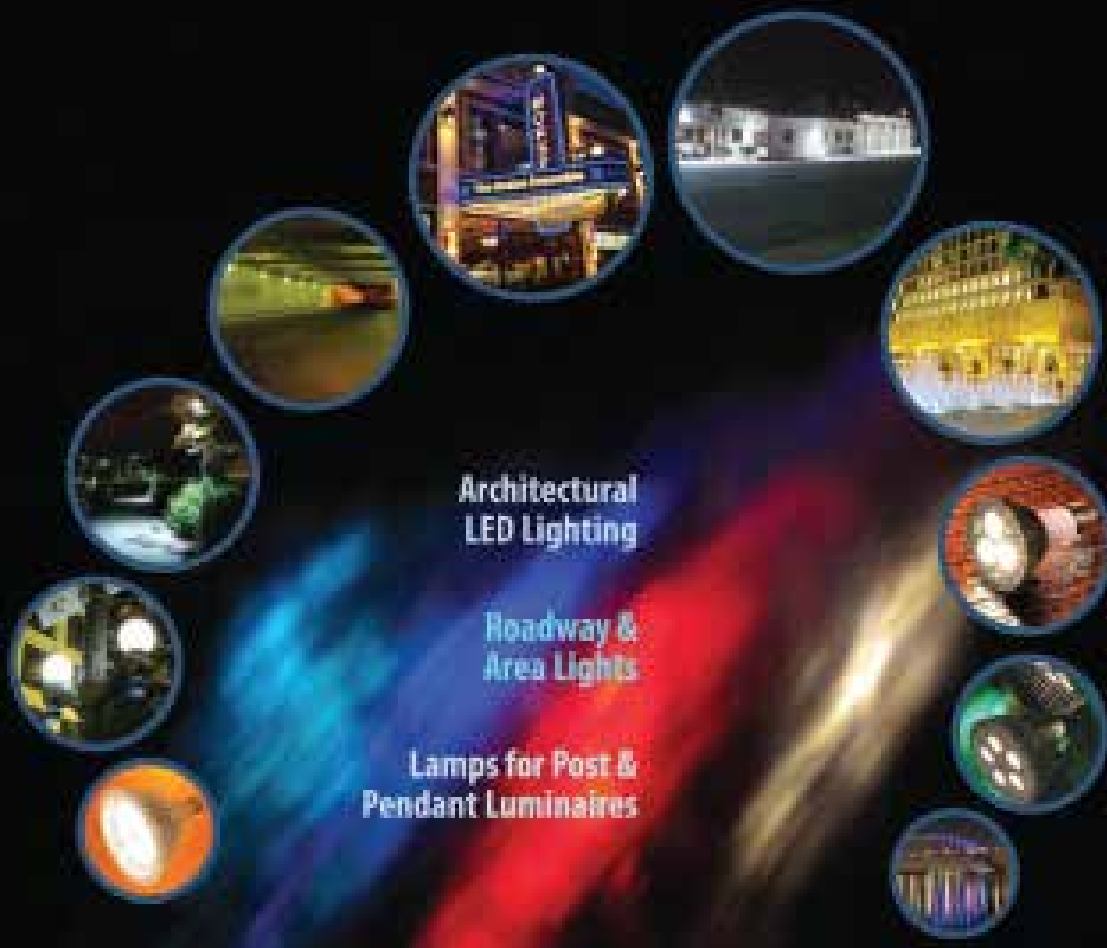
I look forward to having you along with us for the ride.

Brandon Greenhill
Editor, The Utility Source
brandon@tipsmag.net



Out With the old,
In with the New!





Architectural
LED Lighting

Roadway &
Area Lights

Lamps for Post &
Pendant Luminaires

LEDtronics.com

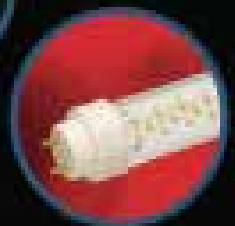
The Future of Light. Today.



LED Tube Lights

LED Strip/String
/Path Lighting

Miniature &
Intermediate
Based LED Bulbs



LED[®]
LEDTRONICS, INC.

800.579.4875

webmaster@LEDtronics.com




DIVERSIFIED PRODUCTS.NET

Innovative Products For Life On The Road



The Netbook Desktop secures your netbook computer at your fingertips. Rotates with an ergonomic tilt. Locking down the netbook is a snap with quick release handle for securing and removing the computer. Adjustable fit for most netbooks on the market.

- Works with existing Jotto Desk mounts as an alternative to the standard desktop - This is not a complete mount. For a netbook desktop on a complete mount, simply exchange the standard desktop for the netbook desktop in the shopping cart, or call us toll free at 1-866-587-4661.
- Quick handle release
- Adjustable fit for your Netbook
- Only fits netbooks up to 10.25" wide, for wider laptops use standard desktop

For over eight years **Console Vault** has created specialized Vehicle Gun Safes for law enforcement officials and others looking to equip their vehicles with the finest in protection and security.

Featuring Console Vault's superior five-point locking system and a high-security barrel lock with an optional keyless combination lock, each gun safe receives the finest attention to detail by our expert craftsmen. Made of 12-gauge cold-rolled plate steel and refined with welded tabs and notch seams, the gun vault is the preferred automotive safe for thousands of law enforcement and government officials from around the world. And as with



every Console Vault product, each Vehicle Vault is proudly made in the United States.

The safe discretely fits inside the existing consoles of most trucks, SUVs and more. With the gun safe installed and the console lid closed, the vault remains completely hidden from view. The safe is only exposed when the console itself is opened, preventing you from attracting attention to your valuables.

The Console Vault gun safe requires absolutely no modification to your vehicle's console and assembly takes less than ten minutes. Your original console can open and close just as it normally would, yet with the vehicle safe in place your belongings are now treated with the security and safety they deserve.

Console Vault has recently made the best design improvement since the vault was developed, the "Triple Guard Lock System" which incorporates a latch design similar to the pins in bank vault doors which greatly increases overall security.

This design also has a front channel which incorporates the lid into the body of the Console Vault, which eliminates all stress off the physical lock itself. This is the greatest, most secure product Console Vault has ever made.



Keeping your truck organized can be a never ending task. With all the clutter from all the the extra things, that tend to be tossed underseat or behind the seat, it always seems you need extra truck storage.

Embraced by truck owners from all walks of life, the **DU-HA** has thousands of happy pickup truck owners utilizing a convenient truck storage solution. Designed for maximum storage in confined spaces, the Du-Ha has

room to store anything from your power tools, tow ropes and tie down straps for contractors, to fishing rods, guns, ammunition and rain gear for the outdoorsman. Of course all pickup truck owners have their own assortment of hats, gloves, jacks, first aid kits, etc. that could use a proper storage space as well. Depending on your pickup truck cab style, you will have either underseat storage or behind the back seat storage.

We found this review from a happy Du-Ha owner, check it out!

The Du-Ha truck storage bins are quick and easy to install, requiring no tools or drilling. Simple tie straps utilize the seat belt anchors and secure your Du-Ha in place. Most states recognize the storage bin as a legal gun case and padded inserts are provided to cradle 2 to 4 rifles, depending on your truck's configuration. Some units have a seat lock available for additional secure storage. Constructed of heavy duty polyethylene these storage units are virtually indestructible and will last for as long as you own your truck.



The Jotto Cargo Slide's job is simple. It affords the luxury of being able to access truck cargo in a pickup truck when on the job site, recreation sports field or grocery parking lot simply by sliding the patented tray in and out of the

truck bed. The need for a product that makes any loading or unloading product has never been greater. Trucks are getting bigger so it makes it harder for putting cargo in or taking it out of the trucks. With the Jotto Cargo Slide truck slide out, it minimizes the effort and makes any job easier.

• **Load Heavy Cargo Fast with a Truck Bed Slide**

Whether you're at work or play, it's always better when you can cut back on downtime from tedious tasks such as loading or unloading a cargo truck. Why risk injury on heavy cargo by reaching in to pull out heavy objects, or climbing in and out of the box to retrieve them when you can stay safely on the ground with the cargo slide tray to quickly and easily slide the cargo out? It only makes sense to simplify effort. Remember, safety is key.

• **Tough Long-lasting Durable Construction**

The Jotto Cargo Slide tray is constructed of tough anodized aluminum and depending on the model will haul between 600 to 1000 pounds. So not only is the truck tray rugged enough to make your life easier, but it will do so for years and due to it's really strong construction will outlive your truck. Also, when you change or update your truck; if the bed is similar the slide can be reinstalled in the new one. It won't matter if you throw items into the back tray or set ex-

tremely heavy cargo on it, the roll out mechanism will work with the same applied minimal effort every time. In tests four large men have sat on the slide and a smaller person has pulled the unit out with one hand.

• **Easy Do-it-Yourself Installation**

Even if you're not mechanically inclined, the Jotto Cargo Slide truck bed slide is do-it-yourself friendly. There are easy to read installation instructions with the order, and ships with a standard courier. You just provide the plywood floor or buy the optional interlocking, snap-fit aluminum decking. As an added bonus for storage, there are optional snap in/snap out cargo baskets for the back and sides for more carrying capacity.

• **Most Practical Best Dressed Truck**

With the Jotto Cargo Slide truck bed slide, you'll have the best utilized and dressed truck bed on the road. Live, work, play. It's all better achieved with the Jotto Cargo Slide, and puts "Life at your Fingertips."

This is a website owned and operated by Diversified Products USA, which operates a variety of on-line stores. Our business serves customer from both Canada and the USA. Our Canadian customers are serviced by us and all products are shipped from our Red Deer warehouse.

Our USA customers orders are dropped shipped from the factory or Master Distributors warehouses.

From the desk of the President

As an online shopper, you need to know who you are dealing with and we want you to be assured that you can buy with confidence from us. So here is my personal guarantee to you... I promise you efficient and friendly service at all times. If you're not satisfied, neither am I.

If, for any reason, you are unsatisfied with how you were treated, I invite you to contact me personally. Call toll free 1-866-314-5427 and ask for Ted or email me at ted@diversifiedproducts.net. You have my personal assurance that I will do everything I can to make a happy and satisfied customer.

BLUE LABEL

TOOL BOXES



If it had sleeves,
they'd be rolled up
just like yours.

DEEZEE
The Quality Truck Accessory People

www.deezee.com



Stay up to date on
worksite updates, events, product news and more on our
Facebook page.



Pelsue is introducing a new product for the safety of aerial lift operators.



When working in aerial lifts, safety is a major concern. Keep your lift operators safe and in compliance. Regulations require the use of fall protection by all aerial lift and work platform operators*. With multiple operations during the day, lift operators may forget to re-attach their safety harness lanyard to the boom anchorage. Now there is an easy solution....

Lanyard Attachment Alert:

- New from Pelsue, the Vert-Alert™ is an integrated warning system that alerts operators of aerial lifts to attach their safety harness lanyard prior to elevating the lift. If the safety harness is not attached to the provided anchorage, a high decibel verbal message states, "Warning, fall protection not connected!" whenever the "UP" or "DOWN" controls are activated.
- Additionally, if the lift operator disconnects his fall protection lanyard, the Vert-Alert™ will announce with the same warning message, "Warning, fall protection not connected!"
- An optional feature will interrupt the "UP" control and prevent the lift from being elevated until the safety harness lanyard is attached.

Descent alert:

- Job sites can be noisy and with many aerial lifts operating quietly on DC power, it is not always noticeable to those on the ground that a lift is descending. The Pelsue Vert-Alert™ sounds a high decibel verbal message, "WARNING, AERIAL LIFT DESCENDING!" whenever the "DOWN" control is activated.
- To avoid nuisance alarms, there is a 3 second delay that allows repositioning without alarm activation.

Data logging:

• The Pelsue Vert-Alert™ system has a data-logger that will record the number of times the lanyard attachment alarm was activated. The Vert-Alert™ will also record the date and time of connect and disconnects of the lanyard, as well as the number of up and down motions. This information will help to identify operations outside of standard operating procedures.

• Data can be downloaded from a USB port to a PC in order to statistically analyze the safety performance of the operators or operational history of the equipment.

*OSHA issued over 8,500 citations in the last three years associated with improper use,

or lack of use of fall protection equipment. The Pelsue Vert-Alert™ is a simple and effective system to warn the operator if they are not attached to the anchorage, which will help improve operator safety and OSHA compliance.

Easily installed on new and existing equipment by competent Installers.

Made in the USA

The TA Pelsue Company is a trusted engineering and manufacturing firm that provides customized and off the shelf construction support equipment. For over 45 years our products have set the standard for value and real world durability for Utilities, Municipalities and contractors that prefer to get what they pay for-quality. For more information, please visit our website www.pelsue.com or contact us directly at 800-525-8460.



The advertisement features a collage of industrial equipment against a background of power lines. The items are categorized into four groups with red text labels:

- VAULT BLOWERS and ACCESSORIES**: Shows a black rectangular unit with a circular fan.
- TRANSFORMER COOLING FANS and ACCESSORIES**: Shows a large, circular, black industrial fan.
- CONFINED SPACE BLOWERS and ACCESSORIES**: Shows a yellow portable blower and a black flexible duct.
- TRANSFORMER COOLING FANS and ACCESSORIES**: Shows a large, black, cylindrical fan mounted on a metal frame.

At the bottom of the advertisement, the company name and contact information are listed:

California Turbo, Inc.
(800)448-1446 fax: (909)854-2801
10721 Business Drive, Fontana, CA 92337
www.californiaturbo.com e-mail: hank@californiaturbo.com

NEW X-BOOST™ OPTION AVAILABLE FOR TEREX® DIGGER DERRICKS

Terex Utilities now offers the multi-control X-Boost™ as an option for Terex® Commander 4000 digger derricks. The optional X-Boost system activates increased hydraulic power to give Terex digger derrick operators increased load handling and lifting capacity within a 10-ft radius. The X-Boost can be installed at the factory on new, or retrofitted with a manufacturer's kit on to existing, Terex Commander 4000 models.

On a Terex digger derrick equipped with X-Boost, a sensor monitors the truck's boom angles. When the boom reaches proper elevation, a sensing switch on the system adjusts pressure to match the lift cylinder pressure to the load. This pressure adjustment allows the machine to handle loads within a 10-ft radius from the centerline of the truck's rotation.



“TEREX DIGGER DERRICKS EXCEL AT DIGGING HOLES, HOISTING AND SETTING UTILITY POLES AND LIFTING A VARIETY OF MATERIALS,” SAYS JOHN PANTZKE, PROJECT MANAGER, TEREX UTILITIES. “THE X-BOOST SYSTEM ALLOWS CUSTOMERS TO MAINTAIN THE PERFORMANCE OF THEIR UNIT IN THE DIGGING ZONE COMBINED WITH INCREASED LIFTING CAPACITY AT HIGHER BOOM ANGLES. THIS OPTION IS YET ANOTHER WAY FOR US TO HELP OUR CUSTOMERS OPERATE MORE EFFICIENTLY.”

To learn more about the Terex X-Boost digger derrick option, as well as other Terex Utilities products and services, visit www.terexutilities.com .

About Terex

Terex Corporation is a diversified global manufacturer of a broad range of equipment that is focused on delivering reliable, customer-driven solutions for many applications, including the construction, infrastructure, quarrying, mining, shipping, transportation, refining, energy, utility and manufacturing industries. Terex reports in five business segments: Aerial Work Platforms; Construction; Cranes; Material Handling & Port Solutions; and Materials Processing. Terex offers financial products and services to assist in the acquisition of equipment through Terex Financial Services. More information can be found at www.terex.com.





MOLYKOTE® BRAND PRODUCT FROM DOW CORNING LUBRICATES 'THE COLDEST JOURNEY' TRANS-ANTARCTIC EXPEDITION



A Molykote® specialty lubricant from Dow Corning is heading to the Antarctic on a record-breaking expedition during extreme polar winter temperatures. Molykote® 55 O-Ring Grease was selected by “The Coldest Journey” expedition team members as they bid to complete the first-ever trans-Antarctic crossing during the polar winter.

The product was chosen because of its ability to meet the challenges of equipment reliability in extreme environments. The expedition team of five people will cover 2,000 miles – mostly in darkness, at temperatures as low as -89.9°C (-129.8°F). In total, the team will spend an estimated six months – March 31 through September 31 – on the ice.

The anticipated challenges of the polar winter required the team to conduct extensive research and testing to identify supplies and equipment that would work

best under the demanding environmental conditions. A specialty device manufacturer recommended Molykote® specialty grease to meet the need for a lubrication solution for O-ring applications. As a result, the expedition leader, British explorer Sir Ranulph Fiennes, contacted Dow Corning.

“The Molykote® brand offers a range of products that meet needs for severe-duty performance in harsh environments and across wide temperature ranges, and we were happy to be approached by The Coldest Journey based on a third-party endorsement of our products’ performance,” said Phil Grellier, Global Marketing Manager for Dow Corning Industrial Assembly and Maintenance Solutions. “I spoke with Sir Ranulph about Molykote® silicone greases and their many applications. We were honored by the opportunity to be a part of this historic expedition and happy that Molykote 55 O-Ring Grease will be making the journey with Sir Ranulph’s team.”

Based on high-performance silicone oil and a lithium-soap thickener, Molykote 55 O-Ring Grease is known for excellent reliability and durability in extremely cold applications. Molykote 55 O-Ring Grease

is being relied upon to provide effective lubrication at the numbing-cold temperatures the team will experience. The specialty lubricant is expected to provide dynamic lubrication for mission-critical rubber-to-metal seals with excellent elastomer compatibility, corrosion protection and high oxidation resistance. It slightly swells rubber O-rings to help ensure positive lubrication and sealing.

The Dow Corning product began its journey on December 6, when the expedition members and more than 100 tonnes of specialist equipment set sail from London. They are en route from Cape Town, South Africa, to Antarctica by ship, having departed on January 7. During the six-month crossing, the expedition team will use a two-man ski unit and a Mobile Vehicle Landtrain (MVL). They also will collect key scientific data to further understanding of the effects of climate

change and to advance other important areas of research. In addition, they aim to raise US\$10 million for Seeing is Believing, an international initiative that raises funds to prevent and treat avoidable blindness.

For more information on how Molykote® brand Smart Lubrication™ solutions can help meet tough challenges in extreme environments, visit molykote.com.

For more information about the trans-Antarctic expedition, visit thecoldestjourney.org.

The advertisement features a man in black overalls standing with his hands on his hips against a blue background with a silhouette of a superhero. The text is in yellow and orange. The main headline is "DEFY EXPECTATIONS" in large, bold, yellow letters. Below it is "Be A Job Site Super Hero!" in orange. The sub-headline is "New from VMAC: The Ultimate 'Utility Belt'..." in yellow. The product name is "The RAPTAIR Multifunction" in large, bold, orange letters. A list of features is provided in yellow with orange arrowheads. The contact information is at the bottom left, and the VMAC logo is at the bottom right.

DEFY EXPECTATIONS
Be A Job Site Super Hero!

New from VMAC:
The *Ultimate* "Utility Belt" ...

The RAPTAIR Multifunction

Includes:

- ▶ **Compressed Air**
- ▶ **AC Generator**
- ▶ **Welder**
- ▶ **Battery Charger**
- ▶ **Hydraulics**
- ▶ **with Auto Shutdown**

866-369-3728
www.vmacair.com/us

Visit our YouTube Channel user/vmacair

VMAC
VEHICLE MOUNTED AIR COMPRESSORS
COMPACT. POWERFUL.



Quality Transmission Components Announces the Donation of Components for ASABE 1/4 Scale Tractor Competition

North Dakota State University “Bison Pullers” ASABE Team is the recipient of the donated components

Quality Transmission Components (QTC) announces the donation of various industrial automation components to the North Dakota State University ASABE (American Society of Agricultural and Biological Engineers) student team, enabling the students to better compete against other Universities in this internationally recognized engineering competition.

“We welcome the opportunity to support up and coming engineers in these types of engineering competitions. The students not only put to use the engineering skills that they will need when they enter the workforce, but they also learn about teamwork and invaluable communication skills, which are sometimes overlooked in a technical education,” said Brian Dengel, Assistant Vice President & General Manager at Quality Transmission Components.

Positive Impact

The students at North Dakota State University in Fargo, North Dakota, will benefit from the team building that a competition like the ASABE 1/4 Scale Tractor requires. With Quality Transmission Components donating these components, the students can avoid spending their time on fundraising, resulting in more time being spent refining their designs and preparing their written reports.

About Quality Transmission Components

Quality Transmission Components is committed to delivering the highest quality industrial automation products in North America from stock. All of the products offered have 3D CAD models available for immediate download at www.qtcgears.com. Founded in 1993 as a division of Designatronics, Inc., Quality Transmission Components is a leader in the supply of power transmission components designed for use in industrial automation applications. The company offers a wide range of products including gears, pulleys, belts, chains, sprockets, tensioners and other related power transmission components, each in various sizes and styles to allow you the ultimate flexibility in your design.

For more information on Quality Transmission Components (QTC), visit www.qtcgears.com.

The Advantage



ARMLIFT TELESCOPING ARTICULATING - TK SERIES

Outriggers or No Outriggers, You Choose

- Our TK Series Aerial Lifts offer your choice of 41', 44' or 46' working heights.
- All TK Series Models are available in both all steel or insulated models and can be mounted on a 17,500 GVW chassis.
- Standard items include full pressure controls at the bucket and base, single stick control at the bucket, hydraulic bucket rotator and 360 degree continuous rotation.
- The TK44 features 44' working height and 28' side reach with no outriggers required.



P.O. Box 109
Armstrong, IA 50514

phone: 712.864.3737
fax: 712.864.3848

lgind@ringtelco.com
www.armlift.com



Comfortable, Durable
Fall Protection





MSA's fall protection products are designed to save lives by preventing falls. We're also working hard to help you work safely. Our fall protection products are designed to help you work safely. Our fall protection products are designed to help you work safely. Our fall protection products are designed to help you work safely.

MSA's fall protection products are designed to save lives by preventing falls. We're also working hard to help you work safely. Our fall protection products are designed to help you work safely.

MSA's fall protection products are designed to save lives by preventing falls. We're also working hard to help you work safely. Our fall protection products are designed to help you work safely.

MSA North America • 800-MSA-2222
© 2014



because every life has a purpose...



Guidelines For Using Consecutively Numbered Tags In A Random Manner

Most utilities map their systems. Most utilities mark their poles. After that the similarities across utilities end.

by
Richard W. Hannah, General Manager, Premax



It is fair to say that the pole numbers utility personnel have devised over the last eighty years are made up of a “code” in which information is placed on the pole by means of a (perhaps uniquely shaped) pole tag, letters, and numbers (or a combination of all three). This information can range from the very simple – say a number for each pole assigned starting with the number “1” and proceeding until all poles are numbered – to the complex – where each pole carries in its code that pole’s location, class and size, ownership, and date set.

Until very recently all of the information placed on the pole has been intelligent information, that is, information that means something. For instance, a pole tag showing ownership would have either the name or initials of the utility that owned the pole marked on it. More abstract codes, using letters and numbers (or other symbols, such as phase Ø), would encode information that directly referred to something known and tangible: a map coordinate, a compass direction, a transformer, a switch, etc. Hence a pole number might seem to be abstract, yet in reality the code 19W52S simply refers to the pole as being 19 units (poles, perhaps), West of a substation and 52 units South. Or it might be “T5S6,” encoding information about a Transformer and a Switch.

The Technology Factor

The advent of GPS and the expanded use of IT have changed the way utilities map and mark utility infrastructure of all types (not just poles).

The ability of utility field personnel to determine accurately their longitude and latitude with a relatively inexpensive device has made it easy for them to locate themselves and physical plant on a well-drawn map.

Most utilities using GPS are also using computers in the field. The use of computer databases has given utility workers the ability to have more and better information at their fingertips – information on the physical plant, a work order, a customer or whatever.

The use of computer databases has also brought about a revolution in pole marking. Instead of a pole marking system that encodes “intelligent” information right on the pole in the field, a new type of pole marking system has emerged. In this new pole marking system the intelligent information – the data – is in the computer, and the number actually on the pole is just a unique identifier or pole ID. The Pole ID number is a physical tag on the asset (pole, transformer, whatever), attached in a permanent way, ensuring that each marked asset has its own number.

By adding a new field – the Pole ID – in the database record of the pole and its attachments, this unique number connects the intelligent information in the computer with the physical asset in the territory – out there in the field.

The simplified database shown below displays the “intelligent” information, the pole’s class, size, its material, treatment, etc. – along with its previous pole number – the one assigned to it in the past. The first field in each of the two records shown here is the new Pole ID number – a random, yet unique number. In this case it is a five-digit number:

Pole ID	Pole Number	Size	Class Material	Treatment
12789	19W52S	46 6	Cedar	Penta
10988	20W53S	40 6	So. Yel. Pine	CCA

Intelligent Marking System Solution

In order to facilitate an intelligent marking system, Premax has developed Smart Grid Tags™. Smart Grid Tags create the physical link between a utility’s computer database and its asset in the field. Randomly numbered, Smart Grid Tags provide each utility asset with a unique ID number, a “license plate,” if you will, allowing utility personnel to mark poles without having to worry about marking in sequential order. A lineman merely takes a tag out of inventory and

Get Cool!

Extend transformer life!
Increase transformer capacity up to 166%!

- expert technical assistance
- large inventory
- low sound levels
- one-piece cast aluminum blades
- energy-efficient motors
- galvanized or stainless steel guards

KRENZ-VENT
quality engineered, performance tested

www.krenzvent.com

STEELMAN INDUSTRIES, INC.

Built to last since 1957!

Rotary Phase Converters

- Provides 3-Phase Power When On y Single Phase Service is Available
- Single or Multi-Motor Applications
- Available in Indoor (ODP) and Outdoor (TEFC) Models

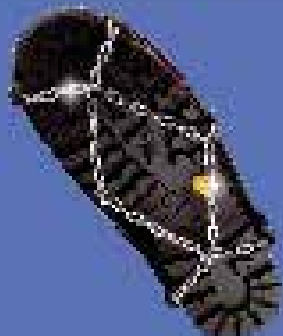
STEELMAN INDUSTRIES 50 YEARS

Steelman Industries, Inc.
2800 Hwy. 135 (P.O. Box 1461)
Kilgore, TX 75662
800.337.5827 • 903.984.1384 fax
www.steelman.com

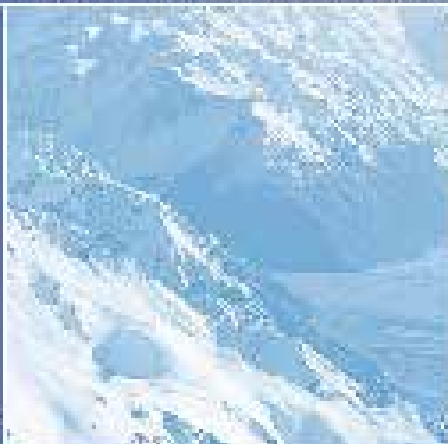
RUD

RUD®

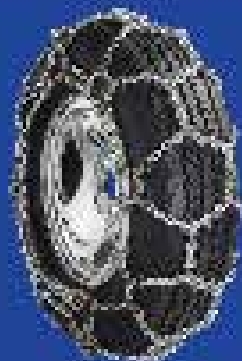
843 N. 20th Ave. Hiawatha, IA 52233 • www.rudchain.com • Tel: 1-800-553-7993



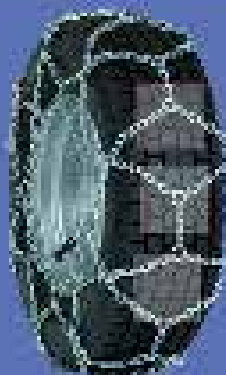
Walk safely with our Berggabel



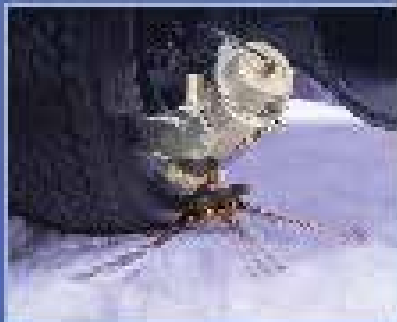
Safety
Quality
Durability



SuperTread



Cling & Grip



Provide traction forward and reverse

ROTOGRIFF



FALL
PROTECTION
ANCHORAGE
POINTS

Meets the highest safety requirement
for personal protection equipment

CIRCLE 28 ON READER SERVICE CARD

RUD Chain Inc.

affixes it to the pole, records its Pole ID in the database and moves on to the next task.

Since these consecutively numbered tags (applied in a random manner) do not contain duplicate numbers, there is no possibility that any two poles will have the same number. It does not matter if a tag is lost or damaged. You have merely lost the cost of the tag (pennies) – you have not compromised the system, nor have you had to figure out a way to number a new pole between pole 55 and pole 56 (no more improvised solutions like 55-1/2 or 55.5).

Each assigned, unique number can be stored in a digital database along with all the other data pertinent to that asset. Again, since there are no duplicate Smart Grid Tags, no assets will ever have the same number. This fact also allows multiple crews to work simultaneously in different locations to mark an entire service territory in record time. The project manager simply gives each team the tags it will need and off to work they go.

In addition, by using single tags that are embossed with consecutive numbers utilities save the labor and money associated with other pole marking systems – systems where field personnel have to assemble a unique number from individual, single or slide-in tags.

The Test of Time, Weather & Effectiveness

Embossed aluminum Smart Grid Tags are lightweight, environmentally friendly and highly resistant to UV radiation and other weather conditions. They actually outlast the pole in many



Ajax Tools & Equipment

**BROOKS BROTHER/ MORAN WELDING-
EXTENDO POLE/ REEL TRAILER**

MODEL # PT92-6K-XL

2- 8,000 LB AXELS

GVWR 13,000 LBS

TRAILER LENGTH: 21' RETRACTED 29'
EXTENDED

BED 4'6" W X 5' L W/D RINGS EACH
CORNER

4- TIE DOWN STRAP TYPE RATCHET
ENCLOSED TOOL BIN

CROSS ARM RACKS

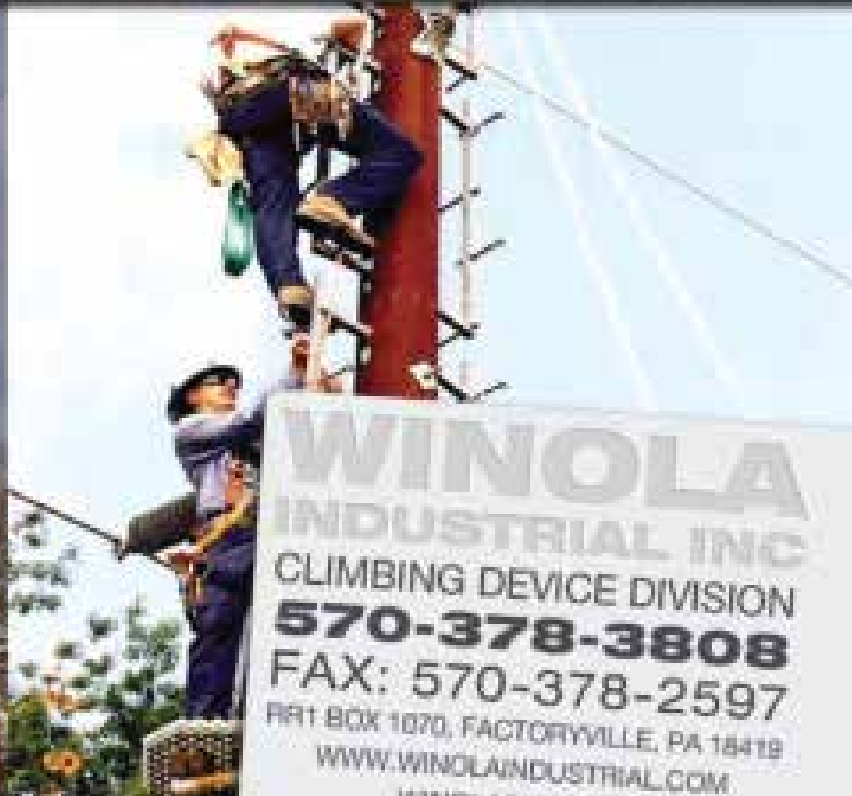
REMOVABLE REEL CARRIER WITH
MANDREL 8" DISC BRAKES

MANDREL 2 7/8" REEL CAP 4' X 7'
MAX APROX 1500LBS

PRICE \$10,000-EA

1.800.532.2529 OR (530) 865-4405
P.O. BOX 518 ORLAND, OR 95965

THE SAFEST WAY TO CLIMB A STEEL POLE IS WITH WINOLA INDUSTRIAL INC.



WINOLA
INDUSTRIAL INC
CLIMBING DEVICE DIVISION
570-378-3808
FAX: 570-378-2597
P.O. BOX 1070, FACTORYVILLE, PA 18841B
WWW.WINOLAINDUSTRIAL.COM
WINOLA@EPX.NET



Serrated Weathering Steel Ratchet Climbers



Basic Hooks for Working (stock adjacent)



Basic Climbing Devices (steps staggered for climbing)



Special Safety Tie-offs



Worked, Special Special Hangers



Standard Steel

This Style Not Aligned



Ladder Poles Poles are Aligned for Safer Climbing

Visit us at: www.winolaindustrial.com

OVER 4 MILLION LADDERS PRODUCED SINCE 1971



cases. Aluminum is extremely reactive, when exposed to air aluminum rapidly becomes covered with a tough, transparent layer of aluminum oxide that resists further corrosion. Items made of aluminum do not tarnish or rust, and a given volume of aluminum weighs less than one-third as much as the same volume of steel. Aluminum has a high strength-to-weight ratio and becomes stronger and retains its toughness as it gets colder. Aluminum is highly resistant to corrosion in salt water as well.

Embossing adds another level of effectiveness to this marking system. Embossing makes Smart Grid Tags easy to read from almost any angle. When aluminum is embossed it is pressed between two dies, a male and a female, so that the characters end up being raised toward the reader of the tag. The embossed tag looks clean and sharp, with each character having a uniform look. When aluminum is stamped, however, the characters are merely mashed or cut into the aluminum with a male die only. The stamped tag is somewhat harder to read, and the characters are not as uniform.



No other label, decal or sign can match the combined economy, durability and legibility of an embossed aluminum pole tag. The combination of the intelligent marking system, the aluminum material and embossed characters results in unmatched marking accuracy.

RAM® VEHICLE MOUNTING SYSTEMS

FROM \$175.00



Powered Dock For The GETAC B300



Tablet Mounts



Printer Mounts



Universal Laptop Tray

Why Choose RAM Vehicle Mounts over other mounting systems?

- Shock and vibration protection
- Low cost
- Military endorsed
- Available in metal or composite
- Large selection of no-drill-vehicle bases
- Ease of installation and use
- Proven ball and socket designs
- First patented molded dock for laptops in vehicle applications
- Patented ergonomic designed docks for safety
- State of the art form and function
- Unmatched quality
- Made in USA
- Lifetime warranty



Tough-Box™ Console Mounts



JUST RAM IT!

Sold Through Dealers, Re-Seller Programs And Online

1-800-497-7479
WWW.RAM-MOUNT.COM



The Citizens Utility Board (CUB) will issue its first-ever report card on electric competition, and alert consumers about troubling reports of potentially fraudulent telephone and door-to-door marketing in Chicago neighborhoods.
<http://www.citizensutilityboard.org/>

A study by customer satisfaction researcher J. D. Power and Associates has found business customers ranked Georgia Power highest in the South region among large utilities in its 2013 Electric Utility Business Customer Satisfaction StudySM released Feb. 13.
<http://www.georgiapower.com/>

Dominion Voltage Inc. has been awarded a patent for technology that enables electric utilities to plan, manage and validate voltage conservation for grid optimization. The title of the patent from the U.S. Patent and Trademark Office is "Voltage Conservation Using Advanced Metering Infrastructure (AMI) and Substation Centralized Voltage Control."
<http://www.dvigridsolutions.com/>

Northwest Energy Efficiency Alliance (NEEA) has published the first two in a series of reports that will impact the future of residential energy efficiency in the Northwest. The Residential Building Stock Assessment (RBSA) is a comprehensive research study of energy consumption in more than 1,600 Northwest residential buildings. It will establish a regional baseline for single-family, manufactured and multi-family homes that will inform the region's future energy planning efforts.
<http://www.neea.org/CBSA>

Recently a Los Alamos National Laboratory quantum cryptography (QC) team successfully completed the first-ever demonstration of securing control data for electric grids using quantum cryptography. The

demonstration was performed in the electric grid test bed that is part of the Trustworthy

Cyber Infrastructure for the Power Grid (TCIPG) project, set up under the Department of Energy's Cyber Security for Energy Delivery Systems program in the Office of Electricity Delivery and Energy

Reliability.
<http://www.lanl.gov/>

Do you know what your power costs are?

- Low Cost
- Color Display
- Can Show Energy Cost
- Software Included

Log & display Power & Energy with the WattDOG.

HMT
 HOYT MONITOR TECHNOLOGIES
 333 Miller Street, Parsippany, NJ 07054
 (908) 753-6321 | www.hoytmonitor.com

WattDOG

SAFETY IS ENGINEERED INTO EVERY TOOL WE MAKE.



Experience, reliability, quality and safety are the foundation of the Cementex brand of double-insulated tools and safety-related products. Our continued use of American tools, fabrics and labor paired with these high standards not only saves time from the mistakes but have also established us as the trusted safety tool specialists.

Visit us at: www.cementex.com

Cementex THE SAFETY TOOL SPECIALISTS

600 WATSONVILLE ROAD • PO BOX 1503 • BURDICKON, NJ 08016 USA • TOLL FREE: 800.664.1292
IN NJ: 609.387.1040 • FAX: 609.386.6880 • cust_serv@cementex.com • www.cementex.com

PROVIDING COMPLETE ELECTRICAL SAFETY SOLUTIONS



Company	Pg.	Website
AJax	26	www.ajaxtoolsandequipment.com
Al Asher & Sons	32	www.alasher.com
Armlift	19	www.armlift.com
California Turbo, Inc.	13	www.californiaturbo.com
Cementex	31	www.cementexusa.com
Dee Zee	11	www.deezee.com
Diversified Products	8-10	www.diversifiedproducts.net
Dur-A-Lift, Inc.	IFC	www.dur-a-lift.com
Golight	4-5	www.golight.com
HMT	30	www.hoytmonitor.com
Jarraff Industries	3	www.jarraff.com
Jeffrey Machine, Inc.	IBC	www.jeffreymachine.com
Krenz- Vent	24	www.krenzvent.com
LEDtronics	7	www.ledtronics.com
MSA Safety	20-21	www.msasafety.com
Pelsue	BC	www.pelsue.com
Rammount	29	www.ram-mount.com
Roose Mfg.	32	www.roosemfg.com
RUD Chains	25	www.rudchain.com
Steelman Industries, Inc.	24	www.steelman.com
Tallman Equipment	1	www.tallmanequipment.com
Terex	14-15	www.terexutilities.com
V-Mac	17	www.vmacair.com/us
Winola	7	www.winolaindustrial.com

ROOSE MFG. CO.

Cable Trailers



2-3 Reel Roll-In



2000-14000 #cap.

800-552-3276 • www.roosemfg.com



Generator - Hoop Drums - Under/Over
Cable Pulling & Tensioning Trailers
Antar - Jaws - Rollers - Ballistics Shields



#1400-M Sherman Reel Under/Over



#1400-M Hoop Drum 805



#1200-M Standard 3-Reel Trailer

(323) 314-3515

www.alasher.com

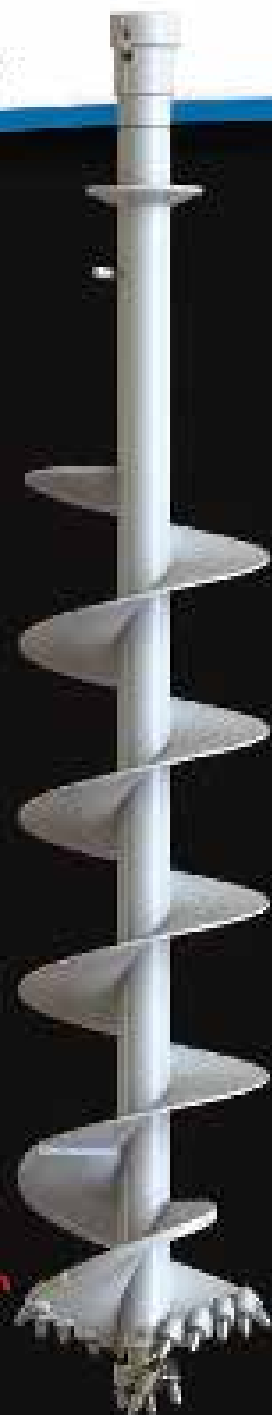
Los Angeles, CA
[alasher@alasher.com](http://www.alasher.com)



Jeffrey Machine

Serving the Utility Industry
with Quality Products and
Service for 35 Years.

- Rock and Dirt Augers
- Core Barrels
- Rock and Dirt Pilot Bits
- Kelly Extension Bars and Adapters
- Anchor Drive Tools and Accessories
- Hard Surfacing Capabilities
- Replacement Parts



Visit www.JeffreyMachine.com to see our catalog
and complete selection of custom built tools.

Birmingham, Alabama
(205) 841-8600

Keep your lift operators safe.

With multiple operations during the day, lift operators may forget to re-attach their safety harness lanyard to the boom anchorage. Now there is an easy solution from one of the leading design and manufacturing companies in America.



PELSUE®

TRADITION+INNOVATION
introduces

Vert-Alert™ is an integrated warning system that alerts operators of aerial lifts to attach their safety harness lanyard prior to elevating the lift.



VERT-ALERT™

LANYARD ATTACHMENT WARNING SYSTEM



Alerts you in the positive with an audible statement: **"Name, full protection not attached".**



Alerts crews and bystanders when basket is descending with an audible statement: **"Warning, aerial lift descending".**

Vert-Alert™ capabilities:

- Optional interlock feature that prevents lift from ascending if safety lanyard is not properly attached
- Descent alert
- Data logging



Easily installed on new and existing equipment.



Part # 303-297-370 Power
Part # 303-13000-240
PST-303-204451