

**THE**

July 2021

# UTILITYSOURCE

Products and Services for Today's Electric, Telecom, and CATV Utilities

## The Lifter & The Lifter Plus



Bergkamp Inc. Launches SP5E Spray Injection Pothole Patcher



The Manitex logo is located in the top left corner. It features the word "Manitex" in a bold, blue, sans-serif font. A stylized blue and white arrow graphic points upwards and to the right, positioned behind the letters "x" and "e".

# Manitex

VISIT US AT: [WWW.MANITEX.COM](http://WWW.MANITEX.COM)  
STRENGTH. DEPENDABILITY. MANITEX.

## THE RIGHT TOOL FOR THE JOB

THE M150 IS IDEAL FOR PLANT, OIL REFINERY OR WAREHOUSE APPLICATIONS. SITTING AT JUST OVER 11 FT. TALL THE M150 CAB-DOWN IS IDEAL WHEN SPACE IS LIMITED. WITH ITS COMPACT SIZE THIS LOW-PROFILE CRANE IS DESIGNED FOR HIGH PERFORMANCE WHILE REMAINING VERSATILE TO AN ARRAY OF WORK ENVIRONMENTS.

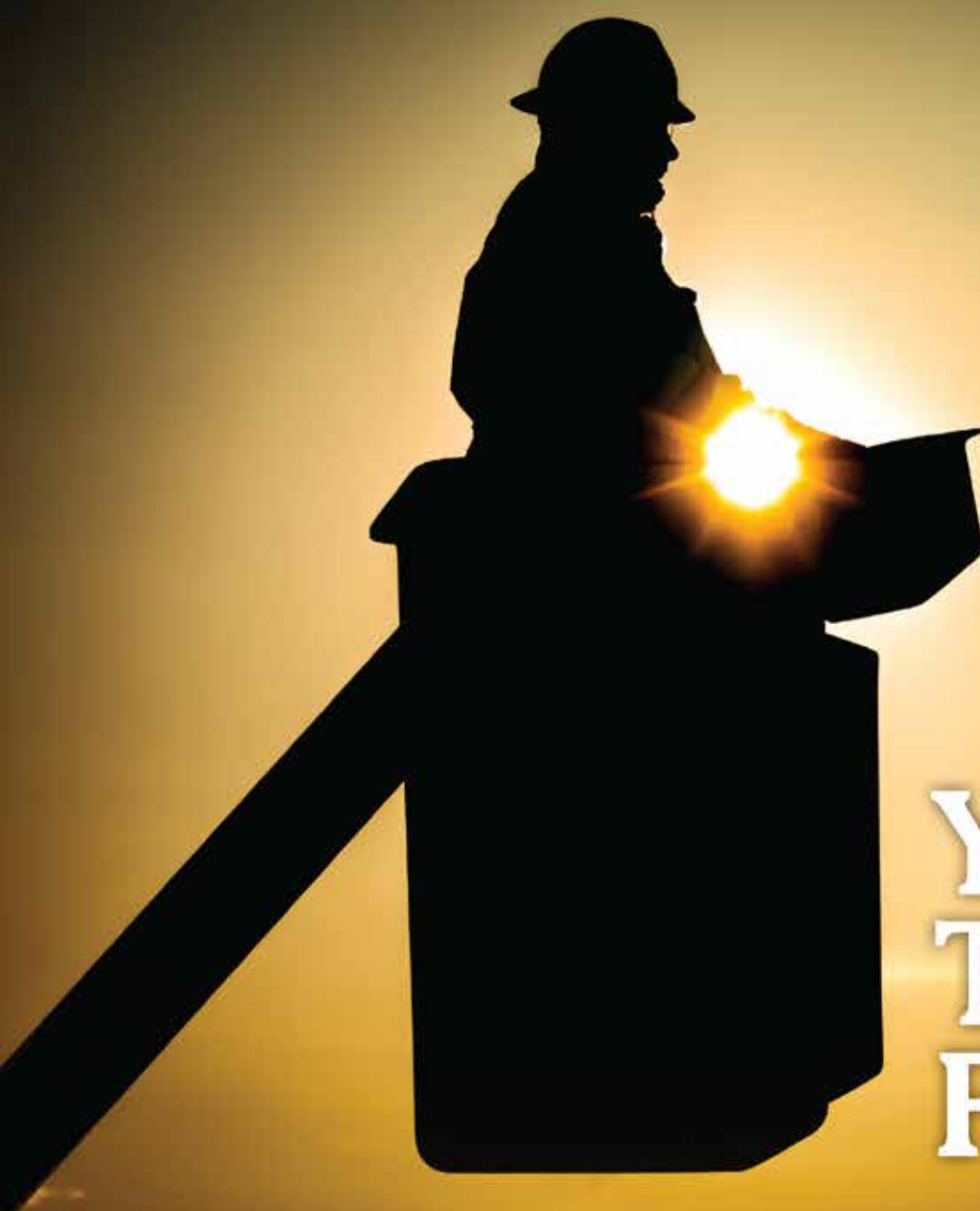
### M150 - 15 TON

- ✓ Optimal operator comfort
- ✓ Fully adjustable controls
- ✓ Best in class load chart

**Stand out safety features!**  
*(Override key switch, rear view camera, ext. LMI utilization light)*







# Your Trusted Partner.

Partnering with Ring Power gives you access to a vast range of jobsite-tough products to round out your fleet. Ring Power carries machines from dozens of manufacturers to ensure you always have access to the right tools for your job. Short-term, long-term or rental-purchase options available.



1-844-766-RENT • [Utility.RingPower.com](http://Utility.RingPower.com)

PG 6	The Lifter & The Lifter Plus
PG 14	Bergkamp Inc. Launches SP5E Spray Injection Pothole Patcher
PG 22	Monthly Buyer's Guide
PG 24	Ad Index



Pg 14

# THE UTILITYSOURCE

Products and Services for Today's Electric, Telecom, and CATV Utilities

Vol. 21 Issue 7

## PUBLISHER

Glen Hobson  
205-441-5591  
glen@tipsmag.net

## ADMINISTRATIVE DIRECTOR

Steven Hobson  
steven@tipsmag.net

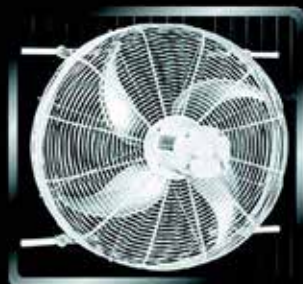
## EDITOR

Brandon Greenhill  
brandon@handfmedia.net

## CREATIVE/ WEB DIRECTOR

Jacklyn Greenhill  
jacklyn@handfmedia.net

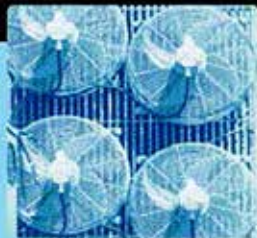
## Get Cool!



Extend  
transformer  
life!

Increase  
transformer  
capacity up  
to 166%!

- expert technical assistance
- large inventory
- low sound levels
- one-piece cast aluminum blades
- energy-efficient motors
- galvanized or stainless steel guards



quality engineered, performance tested

p.o. box 187 germantown, wisconsin 53022

262.255.2318

www.krenzvent.com

P.O. Box 1568 • Pelham, AL 35124  
Phone: 205-441-5591 • Fax: 205-624-2181  
www.theutilitysource.net  
info@theutilitysource.net



*The Utility Source*™ is published twelve times a year on a monthly basis by H & F Media, Inc. *The Utility Source*™ is distributed free to qualified subscribers. Non-qualified subscription rates are \$57.00 per year in the U.S. and Canada and \$84.00 per year for foreign subscribers (surface mail). U.S. Postage paid at Birmingham, Alabama and additional mailing offices.

*The Utility Source*™ is distributed to Power, Telcom and CATV Utilities and Utility Contractors throughout the USA. Publisher is not liable for all content (including editorial and illustrations provided by advertisers) of advertisements published and does not accept responsibility for any claims made against the publisher. It is the advertiser's or agency's responsibility to obtain appropriate releases on any item or individuals pictured in an advertisement. Reproduction of this magazine in whole or in part is prohibited without prior written permission from the publisher.

POSTMASTER: Send address changes to  
H & F Media, Inc. P.O. Box 1568  
Pelham, AL 35124  
PRINTED IN THE USA



## Custom Insurance for the Construction Industry

### With XINSURANCE, You Get...

- All-In-One Approach
- Agent Friendly
- Limits up to \$10MM
- Property & Casualty
- Professional Liability
- Commercial Auto Liability  
(available in most states)
- Products Liability
- Exclusions/Gaps in  
Current Coverage & More

Ask us  
about our new  
coverage option –  
Communicable  
Disease  
Liability



To get your free  
custom insurance  
quote for the  
construction industry,  
visit [www.xinsurance.com](http://www.xinsurance.com)

You can also contact  
Logan Fitzgerald directly at  
**801.304.5562** or  
[loganf@xinsurance.com](mailto:loganf@xinsurance.com)

XINSURANCE is powered by Evolution Insurance Brokers, LC ("EIB"), an excess and surplus lines insurance brokerage. XINSURANCE is a DBA of EIB, which is domiciled in and has its principal place of business in Sandy, Utah. This insurance product is offered by an unlicensed surplus lines insurer. The NPN for EIB is 5464658 and CA license number is OH93938.

# XINSURANCE



# REPAIR CONDUIT IN A SNAP!

- No Tape
- No Plastic Straps,
- No Metallic Straps

## NO KIDDING!

**Designed especially for  
power, communications,  
and fiber optics**



**Step 1: Remove  
Damaged Conduit**



**Step 2: Cut Split  
Duct Conduit to Fit**



**Step 3: Snap in  
Place**



**Step 4: Attach  
Adapters**



**Step 5: Finish Job  
in Record Time**



**"The World Leader In Split Conduit Products"**



**Conduit Repair Systems, Inc.**

The World Leader In Split Conduit Products

800-670-1804

fax: 435-673-8724

email: [crs@conduitrepair.com](mailto:crs@conduitrepair.com)

**Please Visit Our Website at [WWW.CONDUITREPAIR.COM](http://WWW.CONDUITREPAIR.COM)**

# WE KEEP AMERICA ON TRACK



**MOROOKA**

UTILITY CARRIERS

Call: 800-365-7260

OR

Visit: [morookacarriers.com](http://morookacarriers.com)





## The Lifter & The Lifter Plus

The Lifter and The Lifter PLUS are vehicle mounted, automated, solutions to remove heavy network access lids and storm grates. Manually removing lids and grates is now obsolete. Remove covers and grates safely, efficiently, with the push of a button on a hand held remote.

The Lifter and The Lifter PLUS offer a broad range of removal solutions. From conventional sized covers to very heavy, large diameter covers. Optional accessories include a roadway camera with vehicle dash monitor as well as Swing Arms and a Grate Attachment . The Lifter and The Lifter PLUS have versatile vehicle applications including pickup-utility trucks, large combo sewer trucks, jetters and CCTV trucks.

When lids need to be removed to perform maintenance work, The Lifter and The Lifter PLUS deliver a safer, more ergonomically effective solution.

When product quality, worker safety and performance matter-Automate the Process, Manage the Risk.

Visit [www.rockmillsent.com](http://www.rockmillsent.com) or call 712-451-6550



# REDUCE > REUSE > RECYCLE



COMADVERTISING.COM

ONE SYSTEM, MANY APPLICATION AREAS



ROAD WORKS



DEMOLITION



RECYCLING



QUARRIES  
AND MINES



URBAN  
JOB SITE



PIPING



EXCAVATION



TUNNELS AND  
ENCLOSED SPACES



AGRICULTURAL  
SPACES

## EFFICIENCY DEPENDS ON WHAT TOOLS YOU USE



WATCH MB AT WORK  
< Scan the QRcode  
info@mbamerica.com  
[WWW.MBAMERICA.COM](http://WWW.MBAMERICA.COM)



WORLD OF  
CONCRETE

Booth #O303966  
January 22-25 2018

# MB<sup>®</sup>

THE CRUSHING EVOLUTION



Attached are photos of one of our senior Wastewater Utility Workers using The Lifter. She has worked for the City of Thousand Oaks for 27 years. The City is home to over 130,000 residents and owns/operates the entire wastewater collection system. Maintenance staff routinely clean and inspect over 8,500 maintenance holes and 500 miles of wastewater pipeline that convey approximately 10 MGD to the 100% self powered treatment plant.

Routine maintenance and inspection of the collection system involves removing the traffic rated maintenance covers which typically weigh 250 pounds or more. When considering the effects that lifting fatigue and repetitive motion have on the spine, safety of our employees is always a consideration. The idea of an electromagnet has been around for some time. I often associated an electromagnet with movies of scrap yards lifting vehicles up for recycling. While staff were using various fulcrums and experimenting with magnetic lifters, all of these tools still required some sort of fulcrum to assist with lifting. Considering the scrap yard analogy we thought, "why doesn't someone come up with a 12v electromagnet that can lift maintenance covers?" That's when we discovered Rock Mills Enterprises and The Lifter.





# *The New Standard for Linemen*

At Tallman Equipment, our priority is to set the standard in the electric transmission and distribution industry with an all-inclusive approach to serving our customers. Our vision to deliver a trio of quality, convenience, and reliability is driven by listening and adapting to the needs of our customers. As the industry changes, so does Tallman. As a result, Tallman Equipment has become a unique company within our industry offering a full range of professional services including tool sales, product distribution, rentals, and repair. Tallman is already a trusted name in stringing blocks, cable assemblies, fiberglass, and rope products – and we are excited to announce the addition of our new Rubber Goods Testing Lab.

## *Our Services Include:*

Groundset & Jumperset Manufacturing, Repair & Refurbishing

Transformer Sling Manufacturing & Rope Repair

Battery Power Tool & Equipment Repair

Fiberglass Tool Testing, Repair & Refinishing

Tool & Equipment Rental

Rubber Goods Testing & Refurbishment



## *Trust* **TALLMAN**

[www.tallmanequipment.com](http://www.tallmanequipment.com)

Call Toll Free: 877-860-5666

International: 630-860-5666

We purchased one Lifter, had staff review it and used it in the field. Their response was extremely positive and we ended up purchasing another one. The Lifter is very simple to operate, has not presented on issue in the year it's been operating, and does not require the operator to exert any force to use. When you consider none of us are getting any younger and the cost of an average Workers' Compensation claim, purchasing a tool to lessen the chance of an injury makes sense and pays for itself many time over.

The Lifter has been an excellent investment from both a workplace safety and efficiency standpoint!

*John P. Smallis*  
*Public Works Superintendent*  
*City of Thousand Oaks*  
*Thousand Oaks, CA*



**CROSS COUNTRY**  
INFRASTRUCTURE SERVICES INC.

**Your Source for Construction Equipment Rentals and Supplies**

**SUPPLIES INCLUDE:** Abrasive & Cutting Tools > Environmental > Safety Products > Valves, Fasteners & Fittings > Lifting & Rigging > Pigging Products > Pipe Testing Equipment > and Much More

**EQUIPMENT RENTALS INCLUDE:**



**Pumps**



**Padding Machines**



**Pipelayers**



**Flat Bed Tractors**



**Excavators**



**Trenchers**



**Dozers**

For Rentals And Supplies Visit **CrossCountryIS.com** Or Call **1-855-955-CCIS (2247)**



# THE FUTURE IS BRIGHT.

WITH A NEW MANUFACTURING FACILITY, ADDITIONAL  
SERVICE CENTERS AND EXPANDED SERVICE AND PARTS TEAM



**We're more prepared than ever to deliver.**

For more than 75 years, Terex Utilities has been a pioneer of insulated and digging equipment for the electric utility industry. Along the way, we've established a pattern of innovation and continuous improvement in order to deliver solutions so linemen can be productive and keep the lights on for their customers. This is an exciting time in Terex Utilities' history – with strategic investments being made in our manufacturing capabilities, our service footprint, new products, team members and overall customer experience. The future is looking bright, and we're excited to continue delivering equipment and service solutions to the electric utility industry – now better than ever.

**Give us a call at 844-TEREX-4U for your equipment, service and parts needs.**

**[www.terex.com/utilities](http://www.terex.com/utilities)**



**TEREX®**

**WORKS FOR YOU.™**

©2021 Terex Corporation. Terex, the Terex Crown design and Works For You are trademarks of Terex Corporation or its subsidiaries. All rights reserved. January 2021.

# GREENMACHINE

CLEAN. QUIET.  
ALL ELECTRIC  
PULLING AND  
TENSIONING.



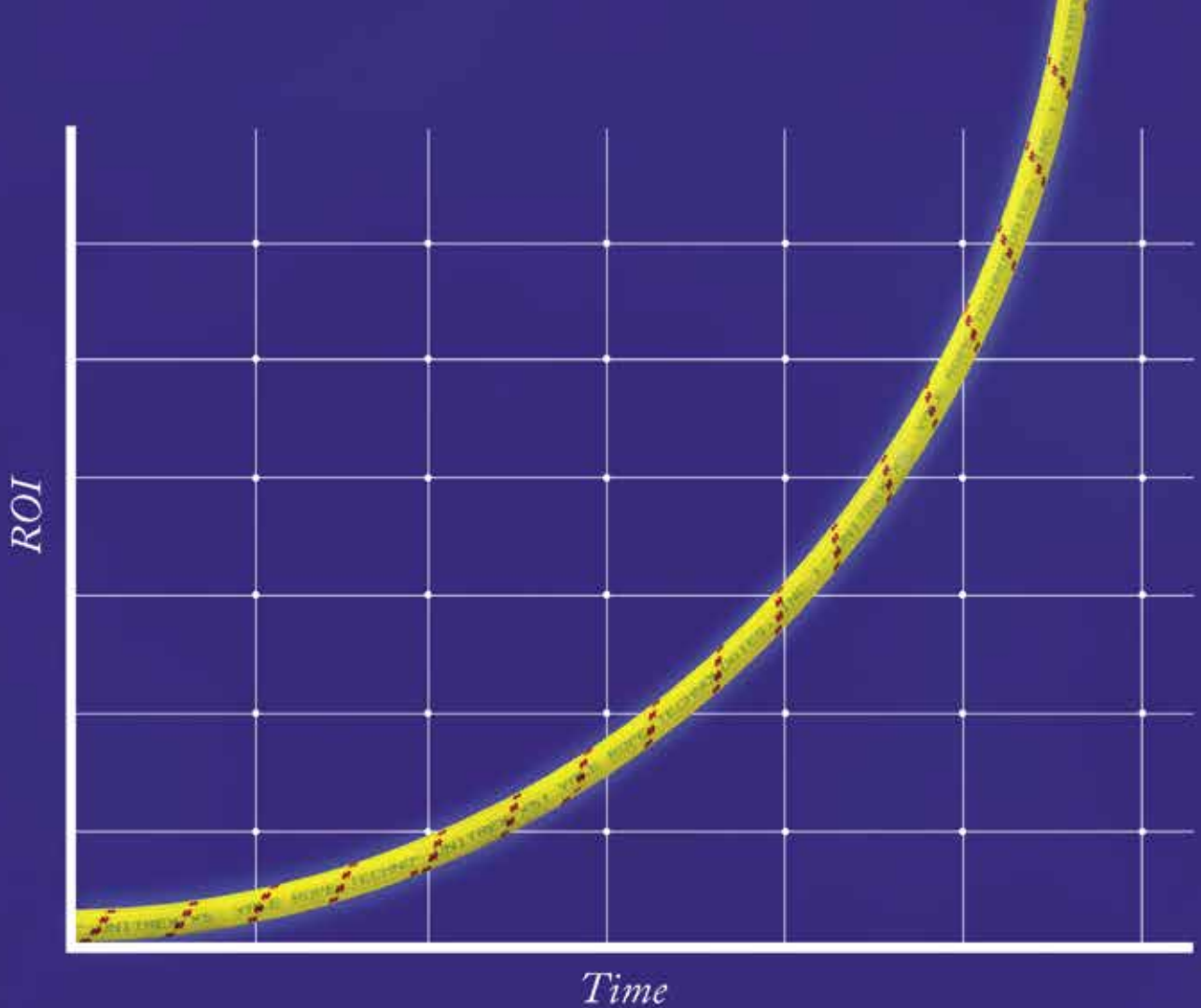
THE NEWLY DESIGNED DPT40E IS POWERED BY A REGENERATIVE ELECTRIC MOTOR, ELIMINATING THE NEED FOR DIESEL AND HYDRAULIC OIL.

FOR SALES INQUIRIES, PLEASE EMAIL US AT [SALES@TSE-INTERNATIONAL.COM](mailto:SALES@TSE-INTERNATIONAL.COM)

U.S. PATENT NOS. 8,322,689 B2 AND 9,178,340 B2

**TSE**  
INTERNATIONAL, INC.  
1-800-825-2402





## Unitrex XS™ Max Wear. Unmatched performance in the field and in the boardroom.

Electric line stringing is easier and more economical with Unitrex™. Made with a core of Honeywell Spectra®, it is up to 10 times lighter than steel, while delivering comparable strength. The urethane-coated polyester jacket provides excellent abrasion resistance for great productivity that lasts.

To learn more, visit [www.yalecordage.com](http://www.yalecordage.com)

**YALE CORDAGE**  
Performance. Passion. Possibilities.

77 Industrial Park Road | Saco, Maine 04072 | p (207) 282-3396, f (207) 282-4620



## Bergkamp Inc. Launches SP5E Spray Injection Pothole Patcher

*Updated model emphasizes safety, simplicity, sustainability, and superior pothole repairs*

Bergkamp Inc., based in Salina, Kansas, announces the launch of its SP5E Spray Injection Pothole Patcher. The SP5E replaces the company's proven SP5 spray patcher and is a safer, simpler, and more sustainable pothole patcher model. With the SP5E, each repair takes just a few minutes, where traditional hot-mix patchers require much more time to complete a patch. Utilizing Bergkamp's exclusive SPECS (Smart Patching Equipment Control System), with industry-leading material mix control technology, units are equipped with a joystick and touch-screen display that provide full operator control. The SP5E is truck-mounted and is operated safely from inside the cab by just one operator — freeing crew members for other tasks. Because patching operations are PTO-driven, Bergkamp has been able to eliminate the traditional auxiliary engine. The result is less pollution, less noise, and reduced maintenance requirements.



# ROME

Available in 10, 12, 14, and 16 foot widths



Manufacturing Heavy Duty Construction and Agricultural Equipment Since 1932

ROME Plow has been the premier name in heavy duty disc plows for over 87 years.

Available in 16, 18, 20, 24, and 30 foot widths



ROME has been manufacturing pivot dump and ejector scrapers for over 45 years for the construction and agricultural industries.



Available with 36 or 42" blades, and up to 20' wide

ROME also manufactures a full line of leveling scrapers (with and without gates) and haul road maintenance tools (with and without rollers)



Available in 18 and 22 yard versions

For more information on our products or for the closest authorized ROME dealer please contact us.

Available in 24, 28, 31, 34 and 37 Yards



770-748-4450 - [www.romeplow.com](http://www.romeplow.com)

Steel Tracks available to fit any articulating tractor.

### *Safer by Design*

Designed with safety for crew members and the traveling public as its first priority, the SP5E includes a number of unique safety features:

- One-person operation from inside the truck protects crew members.
- Asphalt repairs are handled from the front of the machine; traffic stays safely behind the patcher.
- SPECS monitors the front boom position, to help keep it in the safe operating zone.
- An automatic latching system allows the operator to secure the boom for safe travel without leaving the cab.
- Lights, arrow boards, and camera options (basic or 360-degrees) provide additional safety measures.

### *Simple and Efficient*

The SP5E is simple to use. Operators require only minimal training, included at startup, to become proficient in producing quality pothole repairs. A new feature that lends to the unit's simplicity is Bergkamp's SPECS system, which controls material outputs according to a configurable mix design — improving the quality and repeatability of pothole repairs. A touchscreen provides easy-to-follow steps to simplify operation. Joystick controls have been developed for ease of use and efficiency. Bergkamp works closely with agencies to help them locate the proper emulsion and aggregate materials in their area.

### *Additional Updated Features*

Choice of single- or dual-chamber aggregate hopper. As an industry-exclusive option, a dual-chamber aggregate hopper (user-configurable for 60/40 or 50/50 split) allows the distribution of two different gradations of aggregate for more effective repair of deeper potholes and to better match the characteristics of the existing asphalt pavement. With either single- or dual-chamber, the aggregate hopper total volumetric capacity is 5 yd<sup>3</sup> (3.8 m<sup>3</sup>) struck. A 55-degree hopper wall angle allows material to flow steadily to the augers, eliminating the need for a vibration system. And in a feature exclusive



to the SP5E, aggregate can easily be unloaded from the hopper by removing a cover in the rear and operating the auger(s) in reverse.

Self-clearing spray head. Three emulsion nozzles in the spray head provide a homogeneous coating of aggregate with the asphalt emulsion. The spray head oscillates to deliver precise control and even distribution of patch material in the pothole, reducing the boom movement necessary to make the repair. The emulsion nozzles automatically blow out to self-clean after every patch, preventing nozzle blockages from developing.

### *B-FIT for Additional Security*

Bergkamp offers customers peace of mind with its B-FIT (Follow up, Inspection, and Training) program, which provides a free onsite visit by a Bergkamp technician within the first year. During this visit, the technician will inspect the equipment and handle additional crew training. B-FIT offers extra assurance to agencies that they have made a safe, sound purchase decision. Following the first B-FIT visit, subsequent visits are available for an additional cost.

### *InPave® Provides Useful Data*

The SP5E comes equipped with Bergkamp's exclusive telematics solution — InPave® Technology Pothole Patching Management System — which provides agency administrators with the most innovative and supported method to manage pothole patching data and costs for planning and budgetary purposes.

### *Rental Option Saves Capital Funds*





# RENTAL EQUIPMENT

## THAT WORKS AS HARD AS YOUR CREW

NESCO isn't just a premier provider of utility rental equipment, but a leader in responsiveness and support for all customers. Dedicated rental and service teams, combined with one of the industry's largest rental fleets, ensure NESCO meets your job site needs.

**AERIAL > DIGGERS > CRANES > STRINGING EQUIPMENT**  
**UNDERGROUND > TOOLS & ACCESSORIES**



800-252-0043  
[www.NESCORENTALS.com](http://www.NESCORENTALS.com)



# WE HAVE THE ROPE TO GET THE JOB DONE.



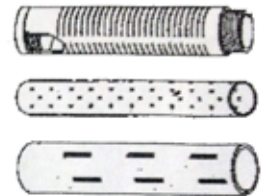
**BUCCANEER**  
rope company  
*Providing strength & stability, with a twist.*

Bergkamp offers a rental option for its line of pothole patchers, including the SP5E, allowing agencies to avoid the time and capital budgeting required in purchasing a machine. Units are available to rent by the week, month, or on a rent-to-own basis.

Bergkamp Inc. has been manufacturing pavement maintenance equipment since 1980, and is the only manufacturer in the U.S. that offers a spray injection patcher and a flameless all-in-one pothole patcher. Bergkamp also builds a full line of truck-mounted, trailer-mounted and continuous slurry seal and micro surfacing pavers and equipment, as well as a line of equipment for laboratory research and testing. Bergkamp's headquarters and manufacturing facility are in Salina, Kansas, and works with customers throughout the world. For more information, contact Bergkamp Inc., 3040 Emulsion Drive, Salina, KS 67401; phone (785) 825-1375; fax (785) 825-4269; email [government-sales@bergkampinc.com](mailto:government-sales@bergkampinc.com); or visit [www.bergkampinc.com](http://www.bergkampinc.com) •



**Atlantic Screen  
& Mfg., Inc.**



- Well Rehab. Products
- Manholes
- Bentonite
- Filter Sock
- Inline Chemical Mixers
- Sampling Ballers
- Clear PVC Pipe
- Locking Caps

Manufacturers of Slotted & Perforated Pipe  
ranging from 1/2" to 24" in diameter

## 302-684-3197

FAX 302-684-0643

142 Broadkill Rd. • Milton, DE 19968

[www.atlantic-screen.com](http://www.atlantic-screen.com)

email: [atlantic@ce.net](mailto:atlantic@ce.net)



# POWER & TRACTION IN ACTION



**ACHIEVER**  
RT-02 DD DIGGER DERRICK

**ACHIEVER**  
DPM-52 TRACKED AERIAL

## TRACKED DIGGER DERRICKS & AERIALS

- 57' working height (aerial)
- Exclusive hydraulic fold-out/removable bucket (digger derrick)
- Can be towed on a 10 ton trailer behind a line truck
- Sets up to 65' poles / 24" diameter
- 2.25 psi ground pressure (loaded), 17,500 lbs, 134 hp
- Super stable 45° hydraulic radial outriggers
- The shortest production lead times in the industry



For more information or to schedule a demonstration contact UTV International today.  
[2sales@utvint.com](mailto:2sales@utvint.com) 1-800-985-8665 [www.utvint.com](http://www.utvint.com)



# MADE FOR **MORE** TO KEEP PACE WITH **YOU**



You begin each day before dawn with a drive and determination to do **more** than the day before. When you move at this pace, you know to do more you need equipment that is made for more. That's why our utility line and land clearing equipment, like our **Forestry Mulchers and Aerial Trimmers**, is built from the ground up to meet your needs, delivering:

**More** Power and Production  
**Lower** Operating Costs  
**Greater** Reliability  
**Better** Safety Features  
**Superior** Operator Comfort and Control

If you're ready to operate equipment that's made to keep pace with you, then we invite you to go to **[morbarkdealers.com](http://morbarkdealers.com)** to find your local authorized Morbark or Rayco dealer. Your dealer will work with you to assess your needs now and in the future, as well as offer equipment recommendations, financing options, wear parts and service if you should ever need it.

Equipment is available for **SALE** or **RENT**.





# Construction Barricades

We Rent Nationwide.



## TRAFFIC CONTROL & CONSTRUCTION SOLUTIONS

Trinity Highway Rentals is the #1 manufacturer of water-filled barricades with the largest inventory in stock and ready to ship. We offer Construction Site, Airport, Work Zone, and Traffic Control solutions that are less susceptible to movement than chain-link fences, drums, and cones. Our water-filled barricades are made in the USA and can be assembled to meet various construction site needs, including perimeter fencing and pedestrian walkways. Flexible rental options are available to accommodate multi-phase projects.



**TRINITY**  
**HIGHWAY**  
RENTALS

TrinityHighwayRentals.com

**888.496.3625**



Scan for More Info

# Monthly Buyer's Guide

---

- **Buccaneer Rope**  
22319 Alabama Hwy.79  
Scottsboro, Al 35768  
800-358-7673  
[www.bucrope.com](http://www.bucrope.com)
- **Manitex USA**  
3000 S. Austin Av.  
Georgetown, TX. 78626  
877-314-3390  
[www.manitex.com](http://www.manitex.com)
- **Rome Plows**  
475 N.6th. St.  
Cedartown, GA. 30125  
770-748-4450  
[www.romeplow.com](http://www.romeplow.com)
- **Cleanfix Reversible Fans**  
250 Wright Blvd.  
Stratford, ON, CN N4Z1H3  
866-489-3267  
[www.cleanfix.org](http://www.cleanfix.org)
- **M.B. Crushers**  
8730 Technology Way  
Reno, NV. 89521  
855-MBCRUSH  
[www.mbcrusher.com](http://www.mbcrusher.com)
- **Terex Utilities**  
1901 -14th AV. N.W.  
Watertown, SD. 57201  
800-233-2972  
[www.terex.com](http://www.terex.com)
- **Conduit Repair**  
761 Enterprise Dr. # 1  
St. George, UT 84790  
800-670-1804  
[www.conduitrepair.com](http://www.conduitrepair.com)
- **Morooka USA**  
11191 Air Park Rd.  
Ashland, VA. 23005  
[www.morooka.com](http://www.morooka.com)
- **U.T.V. INTERNATIONAL**  
8850 Danley Rd.  
Quebec, CN. H4T1M4  
514-345-0990  
[www.utvint.com](http://www.utvint.com)
- **Greaves USA**  
30 Industrial PK.  
Centerbrook, CT. 06409  
800-243-1130  
[www.greaves-usa.com](http://www.greaves-usa.com)
- **Morbark**  
8507 S. Winn RD.  
Winn, MI. 48896  
800-831-0042  
[www.morbark.com](http://www.morbark.com)
- **Yale Cordage**  
77 Industrial Park Rd.  
Saco, ME. 04072  
207-282-3396  
[www.yalecordage.com](http://www.yalecordage.com)
- **Hogg Davis**  
3800 Eagle Loop  
Odell, OR. 97031  
855-883-4909  
[www.hoggdavis.com](http://www.hoggdavis.com)
- **Ring Power**  
9901 Ringhaven DR.  
Orlando, FL. 32824  
407-855-6195  
[www.ringpower.com](http://www.ringpower.com)



***Making perfect  
connections has  
never been simpler.  
In fact, now it's a  
SNAP!***

**NEW** **SNAP Connectors** from Greaves. A revolutionary compression connector concept that gets the job done with just a few turns of a standard wrench!


- ▶ Time-saving, easy installation
- ▶ Superior pull-out strength and conductivity
- ▶ No bulky and costly tools and dies



**GREAVES**

## Ad Index

Company	Pg.	Website
ASI	18	<a href="http://www.atlantic-screen.com">www.atlantic-screen.com</a>
Buccaneer Rope	18	<a href="http://www.bucrope.com">www.bucrope.com</a>
Cross Country	4	<a href="http://www.crosscountryis.com">www.crosscountryis.com</a>
Dominion	BC	<a href="http://www.depparts.com">www.depparts.com</a>
eMars Inc	24	<a href="http://www.emarsinc.com">www.emarsinc.com</a>
GoLight	IBC	<a href="http://www.golight.com">www.golight.com</a>
Greaves	23	<a href="http://www.greaves-usa.com">www.greaves-usa.com</a>
Krenz Vent	2	<a href="http://www.krenzvent.com">www.krenzvent.com</a>
Manitex	IFC	<a href="http://www.manitex.com">www.manitex.com</a>
MB Crusher	7	<a href="http://www.mbamerica.com">www.mbamerica.com</a>
Morooka USA	5	<a href="http://www.morookacarriers.com">www.morookacarriers.com</a>
Nesco	17	<a href="http://www.nesco.com">www.nesco.com</a>
Rayco	20	<a href="http://www.rayco.com">www.rayco.com</a>
Ring Power	1	<a href="http://www.ringpower.com">www.ringpower.com</a>
Rome Plow	15	<a href="http://www.romeplow.com">www.romeplow.com</a>
Tallman Equipment	9	<a href="http://www.tallmanequipment.com">www.tallmanequipment.com</a>
Terex	11	<a href="http://www.terex.com">www.terex.com</a>
Trinity	21	<a href="http://www.trinityhighwayrentals.com">www.trinityhighwayrentals.com</a>
TSE	12	<a href="http://www.tse-international.com">www.tse-international.com</a>
UTV	19	<a href="http://www.utvint.com">www.utvint.com</a>
X Insurance	3	<a href="http://www.xinsurance.com">www.xinsurance.com</a>
Yale Cordage	13	<a href="http://www.yalecordage.com">www.yalecordage.com</a>



# On Site Employee Verification

Bob Put In 9 Hours And 3 Minutes Of Work On Tuesday.  
**Stop Guessing. Start Verifying!**

Always Know Who, When and Where with eMars Compliant Client and RFID  
 Be Davis - Bacon Compliant In Minutes • Users Report 85% Savings of Money and Time • Alerts You of 30 Compliance Errors

Ph. 480-595-0466

**Compliant Client** by eMars

[eMarsinc.com](http://eMarsinc.com)





**GOLIGHT**

## Revolutionary Lighting Solutions



**Durable...Versatile...Powerful...GUARANTEED**



**GOLIGHT**

When the power goes out we know we can rely on our nation's linemen to strap on their boots and march into the elements to get our electrical service back online. More often than not, that means battling wind, rain, snow and ice and doing so in the dark. In those conditions, light that can be dynamically directed where it is needed, when it is needed is an essential tool for safety and productivity. In both emergency situations and day to day operations Golight has proven to be a vital tool in extending work hours and increasing productivity. Golight has been a partner to the men and women who keep our lights on for almost 20 years and we are committed to seeing that relationship grow and develop.

◀ KOOZIES... BANDANNAS... DECALS... Send an email to [media@golight.com](mailto:media@golight.com) and let us know you saw our ad in "THE UTILITY SOURCE" and we will send you some Lineman branded merchandise!



# **IN NEED OF REPLACEMENT RUBBER TRACKS?**

We're proud that  
Dominion Rubber Tracks are the  
**#1 SELLING  
RUBBER TRACK**  
brand in America.

CALL US TODAY  
TO GET THE BEST  
PRICE ON  
RUBBER TRACKS,  
YANMAR PARTS,  
AND  
UNDERCARRIAGE PARTS

Ashland, VA >> Jacksonville, FL >>  
Cincinnati, OH >> Portland, OR >>  
Schenectady, NY >> Dallas, TX

**DOMINION**  
**Equipment Parts**

800-365-7260  
[www.depparts.com](http://www.depparts.com)