

THE

UTILITYSOURCE

September 2021

Products and Services for Today's Electric, Telecom, and CATV Utilities

**ALL Family of Companies
New Purchase Will Be
Largest Crane in Fleet**

**Improving Construction
Safety, One Video Frame
at a Time**





Your Trusted Partner.

Partnering with Ring Power gives you access to a vast range of jobsite-tough products to round out your fleet. Ring Power carries machines from dozens of manufacturers to ensure you always have access to the right tools for your job.

Short-term, long-term or rental-purchase options available.



1-844-766-RENT • Utility.RingPower.com

PROUDLY
MADE IN THE **USA**

MORE POWER *requires* MORE STRENGTH

X THE
UTILITY
EXPO

JOIN US

September 28 – 30 | Louisville, KY

Outside at **Booth E1312**
or inside at **Booth N2348!**



**JEFFREY
MACHINE INC**
DRIVEN BY PRECISION

BETEK
Teeth

PG 4	ALL Family of Companies New Purchase Will Be Largest Crane in Fleet
PG 8	DEWALT Debuts 60V MAX* Brushless Cordless 7-In. FLEXVOLT Grinder with Kickback Brake and 20V MAX* XR Brushless 3-In. Cut Off Tool at FABTECH 2021 Conference
PG 10	Improving Construction Safety, One Video Frame at a Time
PG 18	Eriez® Oil Belt Skimmers Now Available with Special Belts for High Temperature Parts Washing Applications
PG 22	Monthly Buyer's Guide
PG 24	Ad Index



Pg 8

THE UTILITYSOURCE

Products and Services for Today's Electric, Telecom, and CATV Utilities

Vol. 21 Issue 9

PUBLISHER

Glen Hobson
205-441-5591
glen@tipsmag.net

ADMINISTRATIVE DIRECTOR

Steven Hobson
steven@tipsmag.net

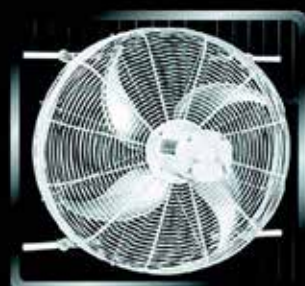
EDITOR

Brandon Greenhill
brandon@handfmedia.net

CREATIVE/ WEB DIRECTOR

Jacklyn Greenhill
jacklyn@handfmedia.net

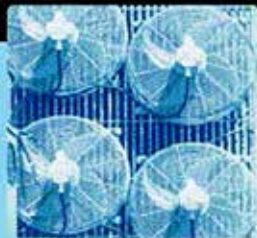
Get Cool!



Extend
transformer
life!

Increase
transformer
capacity up
to 166%!

- expert technical assistance
- large inventory
- low sound levels
- one-piece cast aluminum blades
- energy-efficient motors
- galvanized or stainless steel guards



p.o. box 187 germantown, wisconsin 53022

262.355.2318

www.krenzvent.com

P.O. Box 1568 • Pelham, AL 35124
Phone: 205-441-5591 • Fax: 205-624-2181
www.theutilitysource.net
info@theutilitysource.net



The Utility Source™ is published twelve times a year on a monthly basis by H & F Media, Inc. *The Utility Source*™ is distributed free to qualified subscribers. Non-qualified subscription rates are \$57.00 per year in the U.S. and Canada and \$84.00 per year for foreign subscribers (surface mail). U.S. Postage paid at Birmingham, Alabama and additional mailing offices.

The Utility Source™ is distributed to Power, Telcom and CATV Utilities and Utility Contractors throughout the USA. Publisher is not liable for all content (including editorial and illustrations provided by advertisers) of advertisements published and does not accept responsibility for any claims made against the publisher. It is the advertiser's or agency's responsibility to obtain appropriate releases on any item or individuals pictured in an advertisement. Reproduction of this magazine in whole or in part is prohibited without prior written permission from the publisher.

POSTMASTER: Send address changes to
H & F Media, Inc. P.O. Box 1568
Pelham, AL 35124
PRINTED IN THE USA

Manitex

VISIT US AT: WWW.MANITEX.COM
STRENGTH. DEPENDABILITY. MANITEX.

THE RIGHT TOOL FOR THE JOB

THE M150 IS IDEAL FOR PLANT, OIL REFINERY OR WAREHOUSE APPLICATIONS. SITTING AT JUST OVER 11 FT. TALL THE M150 CAB-DOWN IS IDEAL WHEN SPACE IS LIMITED. WITH ITS COMPACT SIZE THIS LOW-PROFILE CRANE IS DESIGNED FOR HIGH PERFORMANCE WHILE REMAINING VERSATILE TO AN ARRAY OF WORK ENVIRONMENTS.

M150 - 15 TON

- ✓ Optimal operator comfort
- ✓ Fully adjustable controls
- ✓ Best in class load chart

Stand out safety features!

(Override key switch, rear view camera, ext. LMI utilization light)



ALL Family of Companies New Purchase Will Be Largest Crane in Fleet

Power-packed, 1,200-ton Liebherr LR 11000 arrives in spring

Next spring, the ALL Family of Companies takes delivery of what will immediately become the largest crane in its fleet. The Liebherr LR 11000 lattice boom crawler boasts a 1,200-ton capacity and 551 feet of main boom. It's expected to be in high demand across multiple markets served by ALL due to its versatility. It's suitable for all types of work including infrastructure, wind power, and industrial construction, and maintains strength even in constricted working conditions.

"As wind towers have gotten taller and plants have become more sprawling, the need for a big crane with high capacities and extended reach has become clear," said Rick Mikut, ALL's crawler crane division manager. "The Liebherr LR 11000 offers exactly what these and other customers have been looking for."

Mikut adds that the crane's high capacity allows it to easily accommodate load restrictions standard in many sectors. "Even at 50% to 70% of load, the LR 11000 offers plenty of capacity to make the big lifts," said Mikut.

The crane is loaded with features including infinite adjustment of the suspended ballast using V-frame, the hydrau-





lically adjustable folding frame, and VarioTray detachable ballast system that saves the need for stacking and unstacking on a job. The LICCON2 computer control system delivers easy handling, monitored erection mode, and extended set-up facilities.

Another available option for ALL customers is Liebherr's P-boom system, which further increases lift capacity. A second lattice boom is mounted parallel to the other at the bottom and merged together at the top to form one single boom.

The Liebherr LR 11000 is scheduled to be delivered to ALL late spring 2022. With transport weights that can be reduced to 45 tons and a transport width of 11 and a half feet, it will easily deploy across ALL's North American footprint.

About ALL

*The ALL Family of Companies is the largest privately held crane rental and sales operation in North America. Their strategically located branches have access to one of the world's largest and most modern fleets, operating under the ALL, ALT, Central, Dawes and Jeffers names. ALL provides rental, sales, service and jobsite analysis, helping to ensure that customers have the right equipment for the job. For more information, contact ALL Erection & Crane Rental at 4700 Acorn Drive, Cleveland, OH 44131. Phone: 216-524-6550. Toll free: 800-232-4100. Fax: 216-642-7633. On the Web: **www.allcrane.com** •*



DEWALT Debuts 60V MAX* Brushless Cordless 7-In. FLEXVOLT® Grinder with Kickback Brake and 20V MAX* XR Brushless 3-In. Cut Off Tool at FABTECH 2021 Conference

DEWALT announces the launch of the new 60V MAX* Brushless Cordless 7-In. FLEXVOLT® Grinder with Kickback Brake™ (DCG440B) and 20V MAX* XR® Brushless 3-In. Cut Off Tool (DCS438) at FABTECH® 2021 Conference. These new product offerings provide professionals the tools they need to get the job done.

Designed to power through heavy-duty grinding jobs with ease, the new 60V MAX* Brushless Cordless 7-In. FLEXVOLT® Grinder with Kickback Brake™ delivers 30 percent more torque than the DCG418 60V MAX* FLEXVOLT® Grinder** and up to 2,300 max watts output. Featuring up to a 7-In. grinding capacity and a no-load speed of 6,500 RPM, the grinder is ideal for wire brushing as well as general grinding and cutting during metal and concrete applications.

Built with user protection top of mind, the grinder is part of the DEWALT PERFORM & PROTECT™ line of tools and features the E-CLUTCH® System as well as a Kickback Brake™. PERFORM & PROTECT™ tools are designed to provide a high level of one or more of the following: control, dust containment or low vibration, without sacrificing performance. The brake brings the wheel to a halt once the trigger is released while the E-CLUTCH® System immediately shuts down the motor when a pinch or stall is detected. The Kickback Brake™ incorporates both of these features, activating in the event that a pinch or stall occurs, engaging the brake at maximum force and shutting the tool down; effectively reducing the force towards the user.

The new 20V MAX* XR® DEWALT Brushless 3-In. Cut Off Tool is designed to cut a variety of materials such as metal, drywall, fiber cement, plastic, tile and stone. With 550 max watts output***, a no-load speed of 20,000 RPM, a 3/8-In. arbor and 0.79-In. max depth of cut, the cut off tool is ready to handle many applications across the trades. The cut off tool has both forward and reverse capability and includes a removeable dust shroud with adjustable shoe and AirLock™ connection allowing for convenient attachment to DEWALT extractors (sold separately). In addition, the unit includes a 7/16-In. arbor adapter ring and three wheels: a Bonded Abrasive Wheel, a Diamond†Multi-Material Wheel and a Diamond† Tile Wheel. Lastly, the unit comes outfitted with a tool free adjustable guard, onboard wrench storage and LED light.



GOLIGHT

Revolutionary Lighting Solutions



Durable...Versatile...Powerful...GUARANTEED



When the power goes out we know we can rely on our nation's linemen to strap on their boots and march into the elements to get our electrical service back online. More often than not, that means battling wind, rain, snow and ice and doing so in the dark. In those conditions, light that can be dynamically directed where it is needed, when it is needed is an essential tool for safety and productivity. In both emergency situations and day to day operations Golight has proven to be a vital tool in extending work hours and increasing productivity. Golight has been a partner to the men and women who keep our lights on for almost 20 years and we are committed to seeing that relationship grow and develop.

◀ KOOZIES... BANDANNAS... DECALS... Send an email to media@golight.com and let us know you saw our ad in "THE UTILITY SOURCE" and we will send you some Lineman branded merchandise!

Both the 60V MAX* Brushless Cordless 7-In. FLEXVOLT® Grinder with Kickback Brake™ and 20V MAX* XR® Brushless 3-In. Cut Off Tool are TOOL CONNECT™ Chip Ready (DCE042 sold separately) and can be tracked virtually on the jobsite via the DEWALT TOOL CONNECT™ Site Manager app. Each comes standard with a three-year limited warranty, one-year free service contract and 90-day money-back guarantee.

The 60V MAX* Brushless Cordless 7-In. Grinder FLEXVOLT® with Kickback Brake™ will be available kitted (DCG440X2) with two 60V MAX* FLEXVOLT® batteries (DCB609) for \$499 MSRP or as a bare tool (DCG440B) for \$259 MSRP. The 20V MAX* XR® Brushless 3-In. Cut Off Tool will be available as a bare tool later this year where DEWALT products are sold. For more information on DEWALT products and solutions, visit DEWALT.com.

**Maximum initial battery voltage (measured without a workload) is 20 and 60 volts. Nominal voltage is 18 and 54.*

***DCG440 using DCB609 battery has 30% more torque when compared to DCG418 using DCB609 battery.*

****DCS438 tested with DCB203 battery.*

†This blade uses manufactured diamonds engineered for cutting.

FABTECH is a registered trademark of the Society of Manufacturing Engineers and Fabricating Manufacturers Association, which has not endorsed or approved these products.

www.DEWALT.com •

DIAGNOSE YOUR OWN EQUIPMENT.



Big updates on
CASE, New Holland, JCB
& John Deere

The **OHV Pro** is our answer to folks needing a stand alone, full featured scan tool for working on Agricultural, Construction, Mining and other Off-highway applications. Brands such as John Deere, Volvo, Caterpillar and CASE are covered. Perform bi-directional controls on hydraulics and special functions, such as injector coding, DPF regens and VGT calibrations.

8" Android Tablet | IP65 Rated | Bluetooth® Wireless | Easy Updates | Remote Technician

WWW.CANDOINTL.COM **CanDo** INTERNATIONAL, INC. 909/CANDO-11(226-3611)

***Making perfect
connections has
never been simpler.
In fact, now it's a
SNAP!***

NEW **SNAP Connectors** from Greaves. A revolutionary compression connector concept that gets the job done with just a few turns of a standard wrench!

- ▶ Time-saving, easy installation
- ▶ Superior pull-out strength and conductivity
- ▶ No bulky and costly tools and dies



GREAVES

Improving Construction Safety, One Video Frame at a Time

Mikrotron Camera Analysis of Fall Arrest Systems Helps Prevent Construction Industry Injuries

Falls are the leading cause of death in the construction industry, averaging about 300 fatalities annually in the United States alone. To protect these workers, fall arrest systems are required where the risk of falling cannot be entirely eliminated by other safety measures.

Fall arrest systems come in a variety of designs and are subject to rigorous performance testing. To investigate the effectiveness of different system designs, the Professional Association Institute for Occupational Safety (Berufsgenossenschaftliches Institut für Arbeitssicherheit) near Bonn, Germany, recently conducted a study using anthropomorphic dummies that revealed potential failings in several safety harnesses during a simulated fall arrest. These dangers concerned mainly shoulder straps slipping, along with sternal and dorsal attachments causing injury. The behavior of the harnesses during fall arrest depends significantly on their construction, especially on the arrangement of straps and attachment buckles.

Falls of the anthropomorphic dummy and the behavior of the harnesses during fall arrest were recorded using a Mikrotron Cube 7 Motion-BLITZ EoSens® camera set to 1024 x 1024 pixel resolution at 1410 frames-per-second. Its Dynamic Range Adjustment feature allowed research-



REPAIR CONDUIT IN A SNAP!

- No Tape
- No Plastic Straps,
- No Metallic Straps

NO KIDDING!

**Designed especially for
power, communications,
and fiber optics**



"The World Leader In Split Conduit Products"



Conduit Repair Systems, Inc.

The World Leader In Split Conduit Products

800-670-1804

fax: 435-673-8724

email: crs@conduitrepair.com



**Step 1: Remove
Damaged Conduit**



**Step 2: Cut Split
Duct Conduit to Fit**



**Step 3: Snap in
Place**

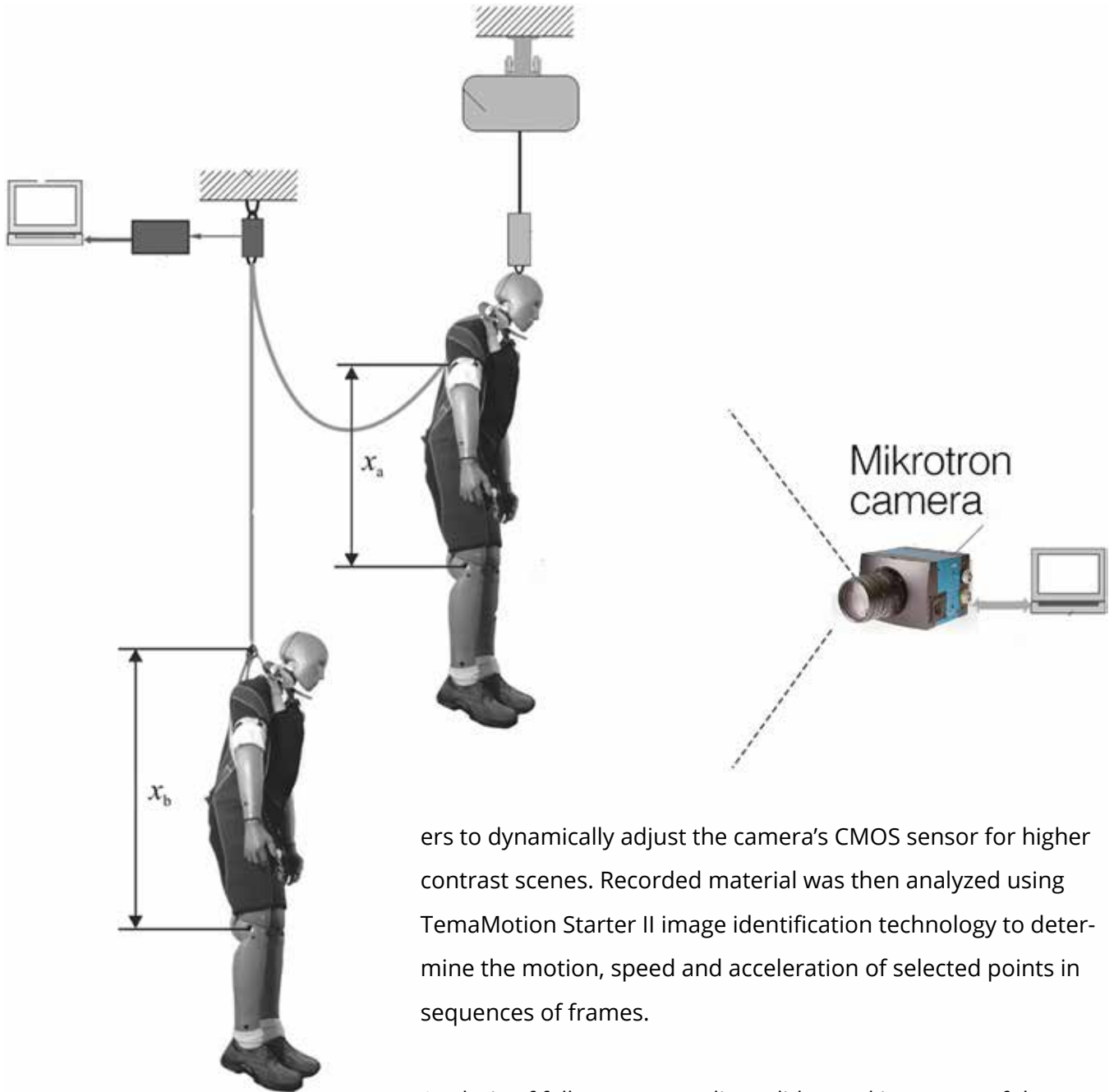


**Step 4: Attach
Adapters**



**Step 5: Finish Job
in Record Time**

Please Visit Our Website at WWW.CONDUITREPAIR.COM



ers to dynamically adjust the camera's CMOS sensor for higher contrast scenes. Recorded material was then analyzed using TemaMotion Starter II image identification technology to determine the motion, speed and acceleration of selected points in sequences of frames.

Analysis of fall arrest recordings did reveal instances of the sternal attachment impacting the dummy's face. Pressure was exerted on the dummy's neck and head as a result of the dorsal D-ring sliding upward along the shoulder straps. In some models of harnesses, the steel buckle traveled along the shoulder straps causing the straps to tighten around the dummy's neck and head, and potentially injuring the face area.

The majority of safety harness tests are conducted following the methods stipulated in international safety standards calling for the use of a rigid torso dummy, instead of an anthropomorphic dummy which more closely simulates human response. The researchers at Berufsgenossenschaftliches Institut

INNOVATIONS

Faster Safer Workspace

iTOOLco.



ALL JACK™

Increase productivity and decrease fatigue using iTOOLco's All Jack™. Install pipe, lights, cabinets, drywall, temporary dust barriers and much more with this innovative jack designed to lift and support the weight of your workpiece while you anchor it into position.

High ceilings and ladder work are not a problem for this dynamic tool. Reach from 58" to a staggering height of 13'6". The industrial gas shock ensures a snug, stable support that stays in place while you complete the installation. Once your workpiece is secured into place, simply remove the All Jack™ by releasing the shock. More powerful than a typical support pole, the All Jack's gas shock can handle your most challenging jobs.



SCAN QR

CORDLESS CANNON 3K™

Speed, Versatility, and performance are all yours with iTOOLco's Cordless Cannon 3K™. This portable 3,000 lb. puller is intuitively designed to handle all of your day-to-day wire pulls.

The built-in capstan switch automatically turns the puller on and off. Simply tug on the rope to start the pull and slack off the rope to shut it down.

Delivers dynamic performance in remote locations or areas where power is not yet available.

The high-capacity rechargeable battery is long-lasting and delivers maximum power. The Cannon 3K™ will even chew through a medium size run of 4 - 350 in 3" conduit with 4 - 90s 220' long in record time and still have half the battery life for your next pull.

SCAN QR



**CHECK US OUT
AT NECA 2021!
BOOTH #2225**

iTOOLco.com / 865-670-3713

FOLLOW US:




für Arbeitssicherheit believe that the rigid torso dummy is insufficient for a comprehensive evaluation of harness performance and their safety parameters. Considering the significance of the results obtained, the researchers expect to continue testing for other dummy positions, such as head down, head inclined sideways and positions causing rotation, using the Mikrotron camera. The study of such cases will allow the development of better criteria for assessing safety harnesses and improving their overall design.


About Mikrotron GmbH

Mikrotron GmbH, established in 1976 and located just outside Munich, Germany, provides a full range of high-end imaging solutions for challenging applications in industry, engineering, science and sports. The company designs, produces, and commercializes high-speed and high-resolution cameras, image recording cameras and systems, software and image processing components. Mikrotron's slow-motion recording enables customers to optimize manufacturing processes, improve product design, revolutionize quality management and analyze motion. Mikrotron is ISO:9001 certified. Mikrotron is operated as a business unit of Lakesight Technologies, and is part of TKH Group NV.

For more information visit: www.mikrotron.de •

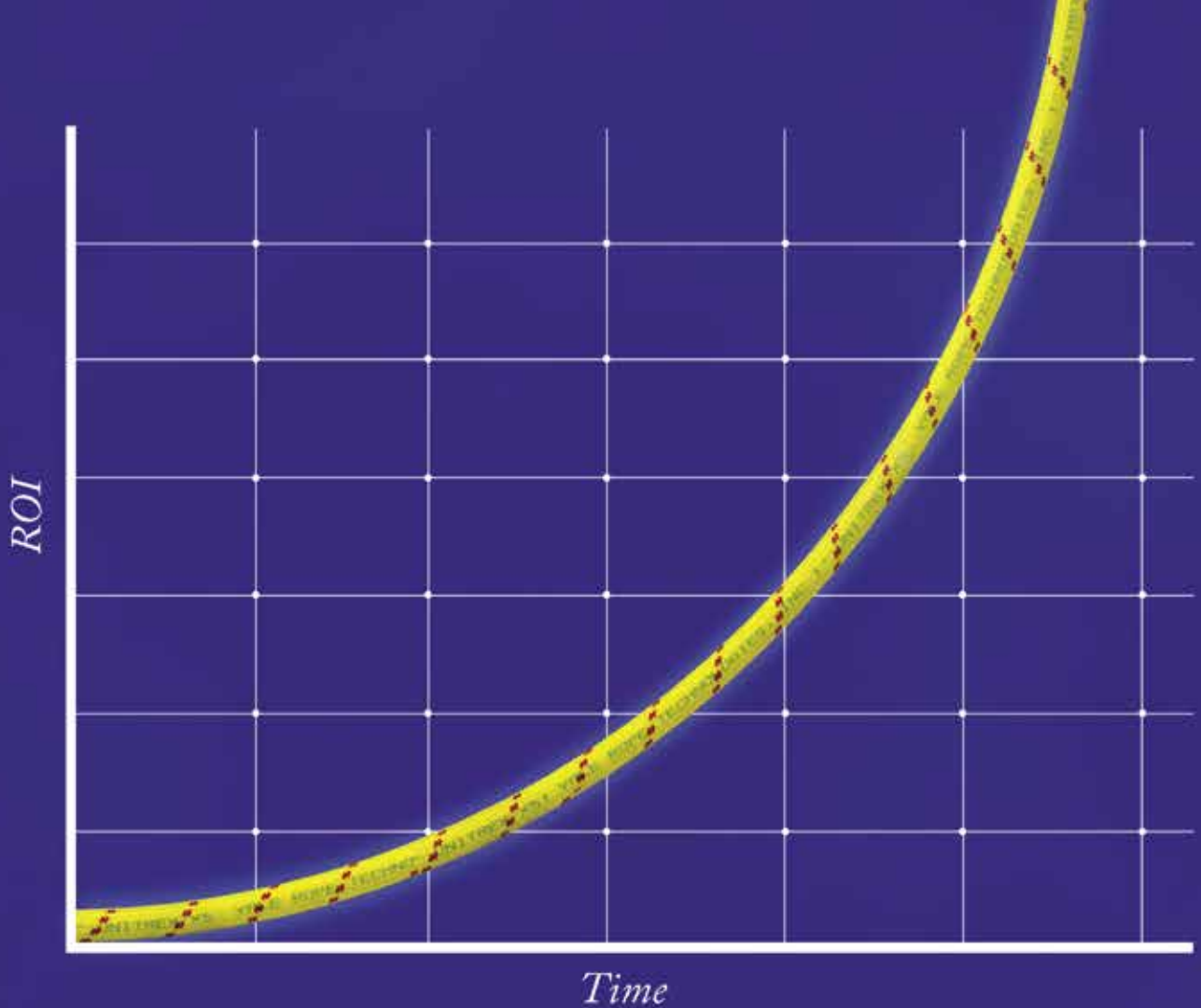


BRIAN ANDERSON
P. 906.271.0063
E. BHA44@CHARTERMI.NET
W. THETICKTERMINATOR.COM
IRON MOUNTAIN, MI



Cut Your Tick Repellent Cost By 50% or More!!!

- Our duration 10% is the only permethrin concentrate that is EPA approved for clothing, gear, and is FR safe too.
- There has never been a better time than now to save your company money in a way most people never thought of before.
- Start your “social distancing” from ticks today!
- Call today and save your company money tomorrow!



Unitrex XS™ Max Wear. Unmatched performance in the field and in the boardroom.

Electric line stringing is easier and more economical with Unitrex™. Made with a core of Honeywell Spectra®, it is up to 10 times lighter than steel, while delivering comparable strength. The urethane-coated polyester jacket provides excellent abrasion resistance for great productivity that lasts.

To learn more, visit www.yalecordage.com

YALE CORDAGE
Performance. Passion. Possibilities.

77 Industrial Park Road | Saco, Maine 04072 | p (207) 282-3396, f (207) 282-4620

MADE FOR **MORE** TO KEEP PACE WITH **YOU**



You begin each day before dawn with a drive and determination to do **more** than the day before. When you move at this pace, you know to do more you need equipment that is made for more. That's why our utility line and land clearing equipment, like our **Forestry Mulchers and Aerial Trimmers**, is built from the ground up to meet your needs, delivering:

More Power and Production
Lower Operating Costs
Greater Reliability
Better Safety Features
Superior Operator Comfort and Control

If you're ready to operate equipment that's made to keep pace with you, then we invite you to go to **morbarkdealers.com** to find your local authorized Morbark or Rayco dealer. Your dealer will work with you to assess your needs now and in the future, as well as offer equipment recommendations, financing options, wear parts and service if you should ever need it.

Equipment is available for **SALE** or **RENT**.





RENTAL EQUIPMENT

THAT WORKS AS HARD AS YOUR CREW

NESCO isn't just a premier provider of utility rental equipment, but a leader in responsiveness and support for all customers. Dedicated rental and service teams, combined with one of the industry's largest rental fleets, ensure NESCO meets your job site needs.

AERIAL > DIGGERS > CRANES > STRINGING EQUIPMENT
UNDERGROUND > TOOLS & ACCESSORIES



800-252-0043
www.NESCORENTALS.com





Eriez® Oil Belt Skimmers Now Available with Special Belts for High Temperature Parts Washing Applications

Eriez® Surface Oil Belt Skimmers feature an oleophilic (oil attracting) belt that hangs into the sump where it removes free-floating tramp oils. Two models and four belt options-- including a special belt for high temperature parts washing applications--are now available.

The Oil Skimmer squeezes oil between rollers, a method of stripping the oil from the belt that does not require scraping. This skimmer is designed for use on large machine tools with tanks deeper than two feet. The Oil Skimmer Jr. is designed for machine tools with shallow tanks.

Both the Oil Skimmer and Oil Skimmer Jr. models can be equipped with a timer, so the unit runs only when the machine is idle and tramp oils have risen to the surface. "For added convenience, the Oil Skimmer Jr. now comes with a magnetic mount," says Eriez Fluid Recycling Product Manager Ron Wendt.

Eriez has offered the Oil Skimmer and Oil Skimmer Jr. for more than two decades. Wendt reports the company has sold thousands of standard units and



CROSS COUNTRY

INFRASTRUCTURE SERVICES INC.

Your Source for Construction Equipment Rentals and Supplies

SUPPLIES INCLUDE: Abrasive & Cutting Tools > Environmental > Safety Products > Valves, Fasteners & Fittings > Lifting & Rigging > Pigging Products > Pipe Testing Equipment > and Much More

EQUIPMENT RENTALS INCLUDE:



Pumps



Padding Machines



Pipelayers



Flat Bed Tractors



Excavators



Trenchers



Dozers

For Rentals And Supplies Visit CrossCountryIS.com Or Call **1-855-955-CCIS (2247)**

CUT & PUNCTURE RESISTANT

Offering 12 Styles of Kevlar® Lined Work Gloves



TITAN IMPACT RESISTANT LINED WITH KEVLAR®
mfg# 09-9083-10



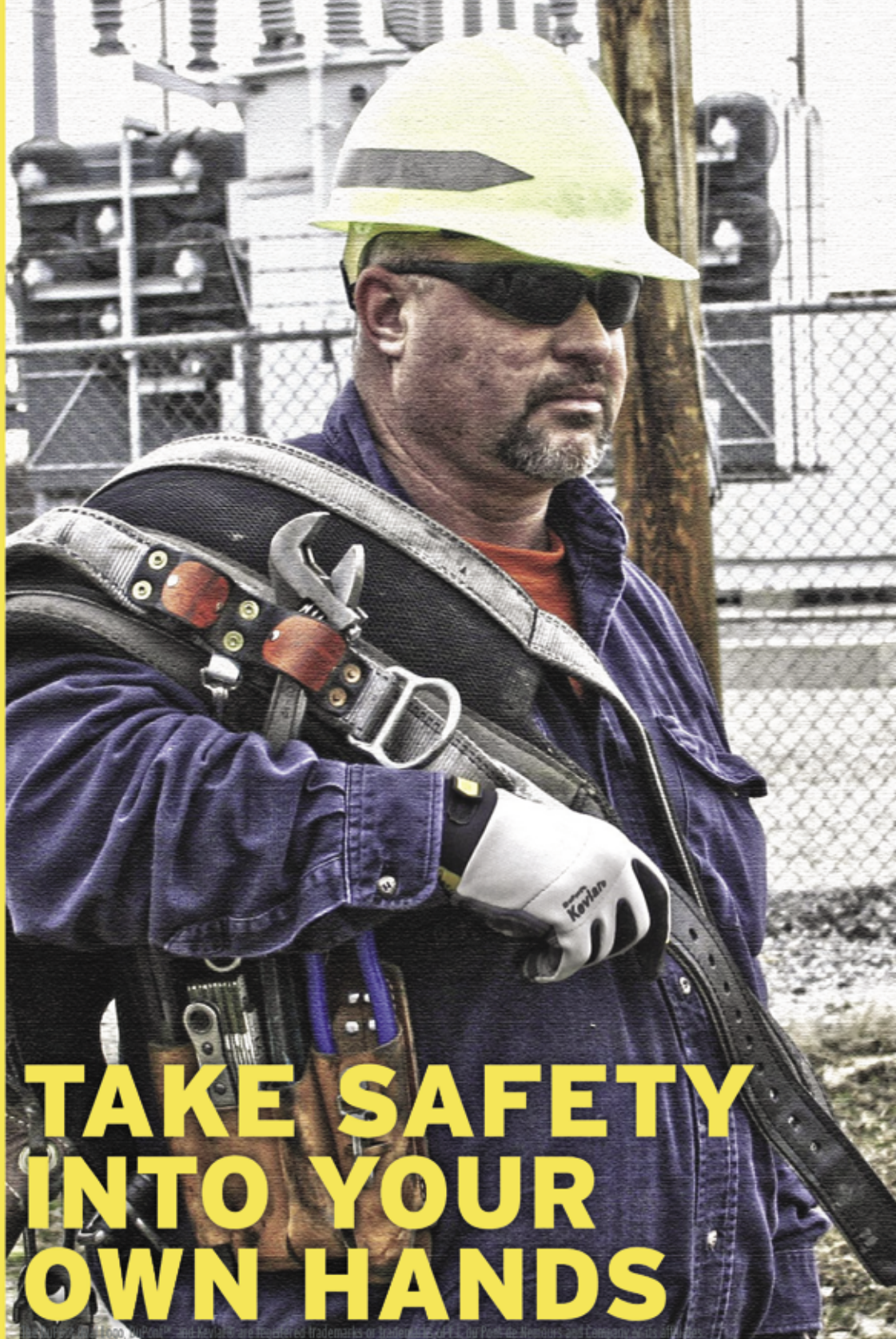
GENERAL UTILITY LINED WITH KEVLAR®
mfg# 05-3080-70



FR LEATHER LINED WITH KEVLAR® WIDE-CUFF
mfg# 12-3275-60



Kevlar.



TAKE SAFETY INTO YOUR OWN HANDS

Contact Us About Wear Trials

info@ytgloves.com

www.ytgloves.com

800-680-7177



#1 IN DURABILITY

WE HAVE THE ROPE TO GET THE JOB DONE.



BUCCANEER
rope company
Providing strength & stability, with a twist.

tens of thousands of the Jr. design. "Customers keep using them for a very long time and just replace the belts when they wear out," Wendt explains.

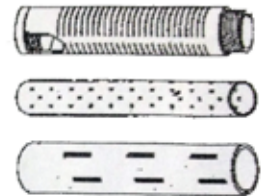
For more information about the Oil Skimmer, Oil Skimmer Jr. and additional tramp oil removal solutions from Eriez, visit <http://erieznews.com/nr560>.

Eriez is recognized as the world authority in separation technologies. The company's magnetic separation, metal detection, material handling, fluid recycling and advanced flotation technologies have application in the mining, processing, packaging, food, recycling, aggregate, plastics and metalworking industries. Eriez designs, manufactures and markets these products through 13 international subsidiaries located on six continents. For more information, visit www.eriez.com or contact Eriez Headquarters, 2200 Asbury Road, Erie, PA 16506 USA at +1 814 835-6000 or eriez@eriez.com.

www.erieznews.com/nr560 •



**Atlantic Screen
& Mfg., Inc.**



- Well Rehab. Products
- Manholes
- Bentonite
- Filter Sock
- Inline Chemical Mixers
- Sampling Ballers
- Clear PVC Pipe
- Locking Caps

Manufacturers of Slotted & Perforated Pipe
ranging from 1/2" to 24" in diameter

302-684-3197

FAX 302-684-0643

142 Broadkill Rd. • Milton, DE 19968

www.atlantic-screen.com

email: atlantic@ce.net

IN NEED OF REPLACEMENT RUBBER TRACKS?

We're proud that
Dominion Rubber Tracks are the
**#1 SELLING
RUBBER TRACK**
brand in America.

CALL US TODAY
TO GET THE BEST
PRICE ON
RUBBER TRACKS,
YANMAR PARTS,
AND
UNDERCARRIAGE PARTS

Ashland, VA >> Jacksonville, FL >>
Cincinnati, OH >> Portland, OR >>
Schenectady, NY >> Dallas, TX

DOMINION
Equipment Parts

800-365-7260
www.depparts.com

Monthly Buyer's Guide

- **Buccaneer Rope**
22319 Alabama Hwy.79
Scottsboro, Al 35768
800-358-7673
www.bucrope.com
- **Manitex USA**
3000 S. Austin Av.
Georgetown, TX. 78626
877-314-3390
www.manitex.com
- **Rome Plows**
475 N.6th. St.
Cedartown, GA. 30125
770-748-4450
www.romeplow.com
- **Cleanfix Reversible Fans**
250 Wright Blvd.
Stratford, ON, CN N4Z1H3
866-489-3267
www.cleanfix.org
- **M.B. Crushers**
8730 Technology Way
Reno, NV. 89521
855-MBCRUSH
www.mbcrusher.com
- **Terex Utilities**
1901 -14th AV. N.W.
Watertown, SD. 57201
800-233-2972
www.terex.com
- **Conduit Repair**
761 Enterprise Dr. # 1
St. George, UT 84790
800-670-1804
www.conduitrepair.com
- **Morooka USA**
11191 Air Park Rd.
Ashland, VA. 23005
www.morooka.com
- **U.T.V. INTERNATIONAL**
8850 Danley Rd.
Quebec, CN. H4T1M4
514-345-0990
www.utvint.com
- **Greaves USA**
30 Industrial PK.
Centerbrook, CT. 06409
800-243-1130
www.greaves-usa.com
- **Morbark**
8507 S. Winn RD.
Winn, MI. 48896
800-831-0042
www.morbark.com
- **Yale Cordage**
77 Industrial Park Rd.
Saco, ME. 04072
207-282-3396
www.yalecordage.com
- **Hogg Davis**
3800 Eagle Loop
Odell, OR. 97031
855-883-4909
www.hoggdavis.com
- **Ring Power**
9901 Ringhaven DR.
Orlando, FL. 32824
407-855-6195
www.ringpower.com



Custom Insurance for the Construction Industry

With XINSURANCE, You Get...

- All-In-One Approach
- Agent Friendly
- Limits up to \$10MM
- Property & Casualty
- Professional Liability
- Commercial Auto Liability
(available in most states)
- Products Liability
- Exclusions/Gaps in
Current Coverage & More

Ask us
about our new
coverage option –
Communicable
Disease
Liability



To get your free
custom insurance
quote for the
construction industry,
visit www.xinsurance.com

You can also contact
Logan Fitzgerald directly at
801.304.5562 or
loganf@xinsurance.com

XINSURANCE is powered by Evolution Insurance Brokers, LC ("EIB"), an excess and surplus lines insurance brokerage. XINSURANCE is a DBA of EIB, which is domiciled in and has its principal place of business in Sandy, Utah. This insurance product is offered by an unlicensed surplus lines insurer. The NPN for EIB is 5464658 and CA license number is OH93938.

XINSURANCE

Ad Index

Company	Pg.	Website
ASI	20	www.atlantic-screen.com
Buccaneer Rope	20	www.bucrope.com
Can Do Intl	8	www.candointl.com
Conduit Repair	11	www.conduitrepair.com
Cross Country	18	www.crosscountryis.com
Dominion	21	www.depparts.com
eMars Inc	24	www.emarsinc.com
GoLight	7	www.golight.com
Greaves	9	www.greaves-usa.com
iToolCo	13	www.itoolco.com
Jeffrey Machine	1	www.jeffreymachine.com
Krenz Vent	2	www.krenzvent.com
Manitex	3	www.manitex.com
Morooka USA	IBC	www.morookacarriers.com
Nesco	17	www.nesco.com
Rayco	16	www.rayco.com
Ring Power	IFC	www.ringpower.com
Terex	BC	www.terex.com
Tick Terminator	14	www.thetickterminator.com
X Insurance	23	www.xinsurance.com
Yale Cordage	15	www.yalecordage.com
Youngstown Gloves	19	www.ytgloves.com



On Site Employee Verification

Bob Put In 9 Hours And 3 Minutes Of Work On Tuesday.
Stop Guessing. Start Verifying!

Always Know Who, When and Where with eMars Compliant Client and RFID
 Be Davis - Bacon Compliant In Minutes • Users Report 85% Savings of Money and Time • Alerts You of 30 Compliance Errors

Ph. 480-595-0466



eMarsinc.com

WE KEEP AMERICA ON TRACK



MOROOKA

UTILITY CARRIERS

Call: 800-365-7260

OR

Visit: morookacarriers.com

THE FUTURE IS BRIGHT.

WITH A NEW MANUFACTURING FACILITY, ADDITIONAL
SERVICE CENTERS AND EXPANDED SERVICE AND PARTS TEAM



We're more prepared than ever to deliver.

For more than 75 years, Terex Utilities has been a pioneer of insulated and digging equipment for the electric utility industry. Along the way, we've established a pattern of innovation and continuous improvement in order to deliver solutions so linemen can be productive and keep the lights on for their customers. This is an exciting time in Terex Utilities' history – with strategic investments being made in our manufacturing capabilities, our service footprint, new products, team members and overall customer experience. The future is looking bright, and we're excited to continue delivering equipment and service solutions to the electric utility industry – now better than ever.

Give us a call at 844-TEREX-4U for your equipment, service and parts needs.

www.terex.com/utilities



TEREX®

WORKS FOR YOU.™

©2021 Terex Corporation. Terex, the Terex Crown design and Works For You are trademarks of Terex Corporation or its subsidiaries. All rights reserved. January 2021.