

THE

November 2021

UTILITYSOURCE

Products and Services for Today's Electric, Telecom, and CATV Utilities



New Eriez® Recycling Test Center Uses Advanced Equipment and Customer Samples to Solve Separation Challenges

PROUDLY
MADE IN THE USA

WISHING
you & yours a
HAPPY &
HEALTHY
holiday season!



FROM ALL OF US AT

**JEFFREY
MACHINE INC**
DRIVEN BY PRECISION

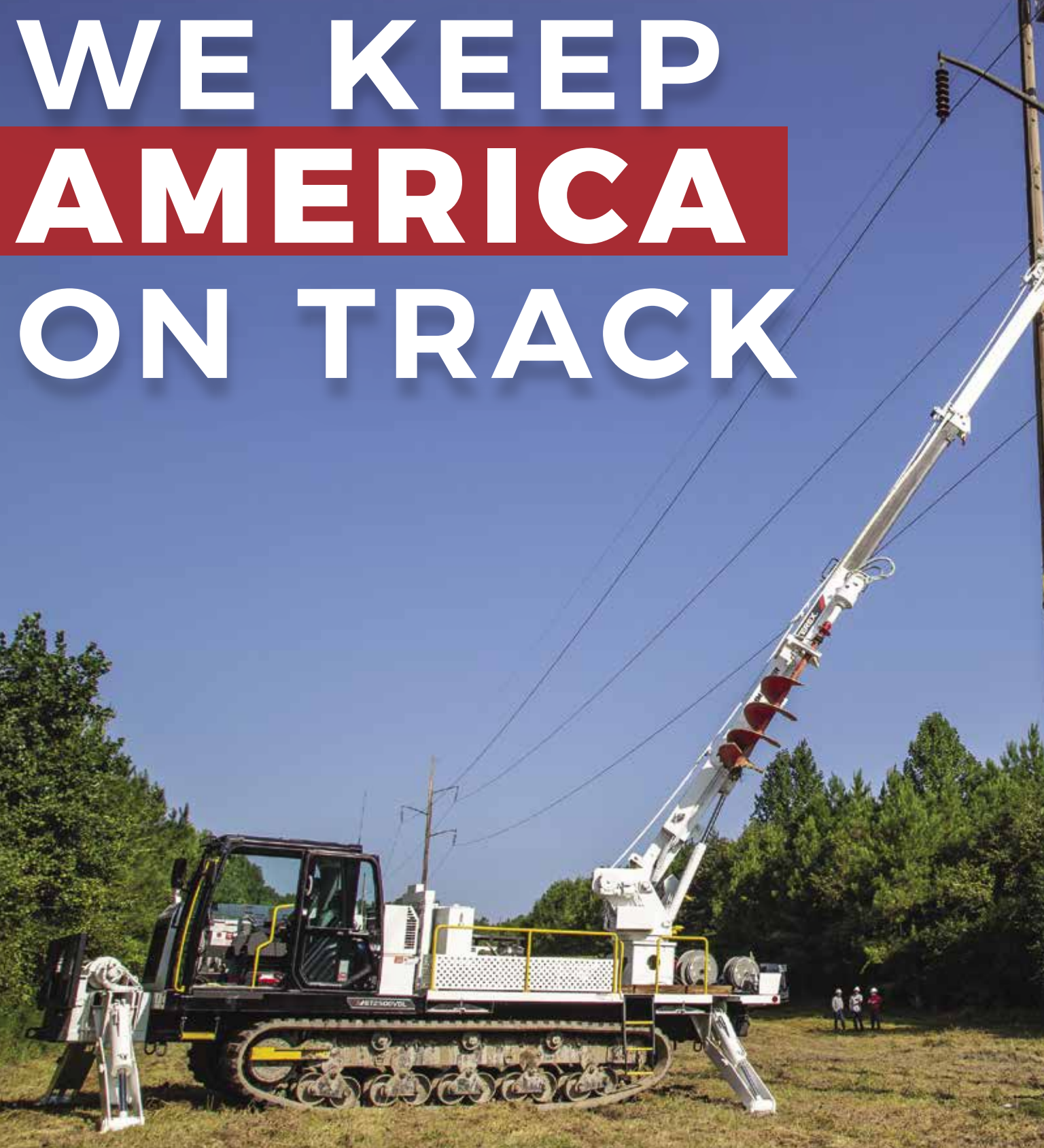
Birmingham, AL | 205.841.8600

Euless, TX | 817.545.8677

JeffreyMachine.com f @ in v

BETEK
Teeth 

WE KEEP AMERICA ON TRACK



MOROOKA

UTILITY CARRIERS

Call: 800-365-7260

OR

Visit: morookacarriers.com

| | |
|-------|--|
| PG 4 | New From Larson Electronics |
| PG 12 | New Eriez® Recycling Test Center Uses Advanced Equipment and Customer Samples to Solve Separation Challenges |
| PG 18 | PRINOTH Continues the Introduction of its Next Generation of vehicles with PANTHER T6, T8, and T12 Models |
| PG 26 | Monthly Buyer's Guide |
| PG 28 | Ad Index |



THE UTILITYSOURCE

Products and Services for Today's Electric, Telecom, and CATV Utilities

Vol. 21 Issue 11

PUBLISHER

Glen Hobson
205-441-5591
glen@tipsmag.net

ADMINISTRATIVE DIRECTOR

Steven Hobson
steven@tipsmag.net

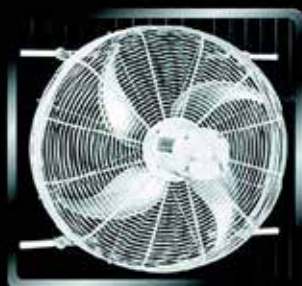
EDITOR

Brandon Greenhill
brandon@handfmedia.net

CREATIVE/ WEB DIRECTOR

Jacklyn Greenhill
jacklyn@handfmedia.net

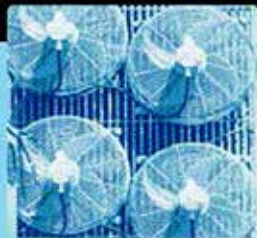
Get Cool!



Extend
transformer
life!

Increase
transformer
capacity up
to 166%!

- expert technical assistance
- large inventory
- low sound levels
- one-piece cast aluminum blades
- energy-efficient motors
- galvanized or stainless steel guards



p.o. box 187 germantown, wisconsin 53022

262.255.2318

www.krenzvent.com

P.O. Box 1568 • Pelham, AL 35124
Phone: 205-441-5591 • Fax: 205-624-2181
www.theutilitysource.net
info@theutilitysource.net



The Utility Source™ is published twelve times a year on a monthly basis by H & F Media, Inc. *The Utility Source*™ is distributed free to qualified subscribers. Non-qualified subscription rates are \$57.00 per year in the U.S. and Canada and \$84.00 per year for foreign subscribers (surface mail). U.S. Postage paid at Birmingham, Alabama and additional mailing offices.

The Utility Source™ is distributed to Power, Telcom and CATV Utilities and Utility Contractors throughout the USA. Publisher is not liable for all content (including editorial and illustrations provided by advertisers) of advertisements published and does not accept responsibility for any claims made against the publisher. It is the advertiser's or agency's responsibility to obtain appropriate releases on any item or individuals pictured in an advertisement. Reproduction of this magazine in whole or in part is prohibited without prior written permission from the publisher.

POSTMASTER: Send address changes to
H & F Media, Inc. P.O. Box 1568
Pelham, AL 35124
PRINTED IN THE USA

THE FUTURE IS BRIGHT.

WITH A NEW MANUFACTURING FACILITY, ADDITIONAL
SERVICE CENTERS AND EXPANDED SERVICE AND PARTS TEAM



We're more prepared than ever to deliver.

For more than 75 years, Terex Utilities has been a pioneer of insulated and digging equipment for the electric utility industry. Along the way, we've established a pattern of innovation and continuous improvement in order to deliver solutions so linemen can be productive and keep the lights on for their customers. This is an exciting time in Terex Utilities' history – with strategic investments being made in our manufacturing capabilities, our service footprint, new products, team members and overall customer experience. The future is looking bright, and we're excited to continue delivering equipment and service solutions to the electric utility industry – now better than ever.

Give us a call at 844-TEREX-4U for your equipment, service and parts needs.

www.terex.com/utilities



TEREX®

WORKS FOR YOU.™

©2021 Terex Corporation. Terex, the Terex Crown design and Works For You are trademarks of Terex Corporation or its subsidiaries. All rights reserved. January 2021.

New From:



Skid Mount Box



Solar-powered systems consist of many parts – from batteries and charge controllers to converters and fuses.

Housing all of these components in a single, easy-to-access job box is a very effective way to organize, utilize and transport the equipment around remote areas.

Through robust protection from outdoor elements (sunlight, moisture and debris), investing in a heavy-duty solar job box can also save you money in the long term.

Larson Electronics manufactures and designs solar job boxes for industrial, outdoor applications. These units are secured on a skid base for seamless transportation with forklifts and vehicles.

Solar panels can be included on the skid base, as well as a genset for backup power. Models with masts are also available for raising equipment in outdoor locations. This solution is recommended for job sites requiring elevated lighting, security and more.

For added protection in rugged environments, our solar job boxes on skid bases are finished with a durable powder coating. This protects the frame and makes the overall system more resilient in outdoor areas. •

***Making perfect
connections has
never been simpler.
In fact, now it's a
SNAP!***

NEW **SNAP Connectors** from Greaves. A revolutionary compression connector concept that gets the job done with just a few turns of a standard wrench!

- ▶ Time-saving, easy installation
- ▶ Superior pull-out strength and conductivity
- ▶ No bulky and costly tools and dies



GREAVES



Portable Electrostatic Sprayers

Problem: You need an effective way to sanitize your business facilities thoroughly and quickly, to prevent the spread of the corona virus or other disease-causing microbes.

Initially, you tried wiping down the area at the end of every work day – but the process is extremely time consuming. Getting around bulky machines, equipment, furniture and dividers is no easy task!

Solution: Use the Larson Electronics portable electrostatic sprayer to sanitize buildings and rooms easily, without coming in contact with dirty surfaces.

Why: Portable electrostatic sprayers work by releasing a charged mist into the area. The mist contains sanitizing properties that “wrap” around contaminated surfaces or equipment. Compared to abrasive liquid cleaners, this solution is non-corrosive and can be applied from a safe distance.

Larson Electronics portable electrostatic sprayers are battery powered, allowing individuals to clean hard-to-reach sections of the building. Our cordless unit with a 4.22-gallon tank can cover up to 40 acres per charge (five acres per hour).

Applications: Portable electrostatic sprayers are recommended for industrial facilities, commercial areas, restaurants, offices, schools, public transit areas and more! •

REPAIR CONDUIT IN A SNAP!

- No Tape
- No Plastic Straps,
- No Metallic Straps

NO KIDDING!

**Designed especially for
power, communications,
and fiber optics**



"The World Leader In Split Conduit Products"



Conduit Repair Systems, Inc.

The World Leader In Split Conduit Products

800-670-1804

fax: 435-673-8724

email: crs@conduitrepair.com



**Step 1: Remove
Damaged Conduit**



**Step 2: Cut Split
Duct Conduit to Fit**



**Step 3: Snap in
Place**



**Step 4: Attach
Adapters**



**Step 5: Finish Job
in Record Time**

Please Visit Our Website at WWW.CONDUITREPAIR.COM



Portable Explosion Proof Light Towers

Daylight savings time is slowly but surely approaching. Many businesses in the industrial sector are already preparing for the inevitable yearly event, which is scheduled for November 7.

Instead of succumbing to months of longer nights and shorter days, what can you do to keep operations in hazardous locations going?

Daylight savings time is slowly but surely approaching. Many businesses in the industrial sector are already preparing for the inevitable yearly event, which is scheduled for November 7.

Instead of succumbing to months of longer nights and shorter days, what can you do to keep operations in hazardous locations going?

For combustible job sites, Larson Electronics portable explosion proof light towers serve as reliable and superior light sources. With these units around, you can keep work areas functional, while improving overall safety for workers.

Our Class-rated light masts generate powerful illumination and are easy to transport around work facilities!

Stryker ST Series

Remote Control Spotlight



Hardwire Control Option

Wired Dash Mount



Wireless Remote Option

Operates up to 80' from light



ST SERIES BY GOLIGHT

- Multiple Unit Selector Function
 - 2 units with 1 remote
- Home Position Function
- Fluorescent Remote Buttons
- New Wireless Technology Benefits
 - Simultaneous Pan + Tilt
 - Multiple users can operate lights in close proximity without interference
- Stainless Steel Mounting Brackets
- Smart Programming Logic
 - Quick and simple pairing
- UV and Saltwater Resistant
- 5 Year Limited Warranty

GOLIGHT INC | 800.557.0098 | 308.278.3131 | golight.com



Atlantic Screen & Mfg., Inc.

- Well Rehab. Products
- Manholes
- Bentonite
- Filter Sock
- Inline Chemical Mixers
- Sampling Ballers
- Clear PVC Pipe
- Locking Caps

Manufacturers of Slotted & Preforated Pipe
ranging from 1/2" to 24" in diameter

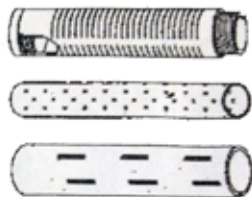
302-684-3197

FAX 302-684-0643

142 Broadkill Rd. • Milton, DE 19968

www.atlantic-screen.com

email: atlantic@ce.net



Customers can choose from different types of lamp technologies, lighting configurations, tower heights and mounting styles. We offer a wide range of explosion proof light towers in order to match various job site sizes and lighting requirements.

This series includes our top-selling adjustable tripod and quadpod explosion proof LED light towers with wheels. The solid-state units are powder coated for durability and comes with foldable legs for easy storage. We also offer hazardous area metal halide light towers on wheeled bases.

For remote areas, check out our rechargeable battery-powered and generator-powered explosion proof light masts. These systems are designed for jobs in hard-to-reach hazardous locations without access to nearby outlets. •



OIL ALERT[®] LIQUID LEAK DETECTOR

DETECT OIL LEAKS AND SPILLS...FAST!

- ***AVOID OPERATIONS SHUT-DOWN***
- ***REDUCE ENVIRONMENTAL RISKS***
- ***MINIMIZE COSTLY CLEAN-UP***
- ***MONITOR OFF-SITE EQUIPMENT***

A small amount of oil (1/32 inch) seeping under Oil Alert activates it's loud "on/off" alarm and/or relay contact output. The low profile dome shaped unit guards against undetected leakage in areas of oil lubricated / hydraulic equipment, stand-by generators, pressurized piping and fuel oil storage locations...

5 year Limited Warranty

DORLEN Products Inc.

6615 W. Layton Ave. Milwaukee, WI. 53220

Go to WWW.OIL-ALERT.COM

OR CALL: 1-800-533-6392

FOR MORE INFO!!



CLEANFIX.ORG

Reversible Fans For Radiator Cleaning



CLEAN RADIATORS

= Increases Power 

= Increases Operator Comfort 

= Reduces Downtime 

= Saves Fuel 

More than you think!



web cleanfix.org

youtube



cleanfixgf


facebook



CleanfixReversibleFans



New Eriez® Recycling Test Center Uses Advanced Equipment and Customer Samples to Solve Separation Challenges

The background image shows a large industrial facility with various pieces of recycling equipment. On the left, there's a yellow safety railing and a large black flexible hose. In the center, a large red and black machine, possibly a conveyor or separator, is mounted on a grey base. To the right, there's a large silver metal duct curving upwards, and an orange frame supporting a green cylindrical component. The floor is a smooth, light-colored concrete.

Eriez® announces its new Recycling Test Center is now open, giving customers a full-scale laboratory opportunity to test their own materials on state-of-the-art recycling equipment to determine the most effective solutions for the toughest separation challenges.

The Eriez Recycling Test Center is housed in the company's recently expanded Wager Road plant, located in Erie, Pennsylvania. The facility has the capability to perform sorting tests on a wide variety of ferrous and nonferrous products.

WE HAVE THE ROPE TO GET THE JOB DONE.



BUCCANEER
rope company
Providing strength & stability, with a twist.

Testing equipment includes Eriez' RevX-E® Eddy Current Separator, Ultra High-Frequency Eddy Current Separator, Stainless Steel Separator and several magnetic separators. The Test Center is also equipped with a metering feeder to regulate feed to individual pieces of equipment and a screen with multiple size fractions to help determine which size is optimal for each process. "With this range of cutting-edge equipment, we can customize testing procedures based on customers' unique materials and needs," says Eriez Recycling Market Manager Mike Shattuck.

"When testing concludes, our team of experts provide customers with customized reports and recommendations on equipment mix and placement, as well as supported predictions on expected recovery rates and payback periods," Shattuck adds.

Eriez' metal recovery equipment, either as individual units or complete systems, is designed for efficient and economical processing of municipal solid waste, comingled recyclables, shredded automobiles, electronic scrap, glass cullet, plastic (PET), foundry sand and many other resource recovery operations. "Our innovative recycling solutions are helping to achieve better recovery at a higher grade and lower cost," says Shattuck.

To learn more about Eriez' full line of equipment for recycling, visit eriez.com/Recycling. For additional information about the Eriez Recycling Test Center, go to www.eriez.com/RecyclingTestCenter •



Custom Insurance for the Construction Industry

With XINSURANCE, You Get...

- All-In-One Approach
- Agent Friendly
- Limits up to \$10MM
- Property & Casualty
- Professional Liability
- Commercial Auto Liability
(available in most states)
- Products Liability
- Exclusions/Gaps in
Current Coverage & More

Ask us
about our new
coverage option –
Communicable
Disease
Liability



To get your free
custom insurance
quote for the
construction industry,
visit www.xinsurance.com

You can also contact
Logan Fitzgerald directly at
801.304.5562 or
loganf@xinsurance.com

XINSURANCE is powered by Evolution Insurance Brokers, LC ("EIB"), an excess and surplus lines insurance brokerage. XINSURANCE is a DBA of EIB, which is domiciled in and has its principal place of business in Sandy, Utah. This insurance product is offered by an unlicensed surplus lines insurer. The NPN for EIB is 5464658 and CA license number is OH93938.

XINSURANCE



BRIAN ANDERSON

P. 906.271.0063

E. BHA44@CHARTERMI.NET

W. THETICKTERMINATOR.COM

IRON MOUNTAIN, MI



Cut Your Tick Repellant Cost By 50% or More!!!

- Our duration 10% is the only permethrin concentrate that is EPA approved for clothing, gear, and is FR safe too.
- There has never been a better time than now to save your company money in a way most people never thought of before.
- Start your "social distancing" from ticks today!
- Call today and save your company money tomorrow!



SUPPLIES INCLUDE: Abrasive & Cutting Tools > Environmental > Safety Products > Valves, Fasteners & Fittings > Lifting & Rigging > Piggging Products > Pipe Testing Equipment > and Much More

EQUIPMENT RENTALS INCLUDE:



Pumps



Padding Machines



Pipelayers



Flat Bed Tractors



Excavators



Trenchers



Dozers

For Rentals And Supplies Visit **CrossCountryIS.com** Or Call **1-855-955-CCIS (2247)**

INNOVATIONS

Faster Safer Workspace

iTOOLco.



ALL JACK™

Increase productivity and decrease fatigue using iTOOLco's All Jack™. Install pipe, lights, cabinets, drywall, temporary dust barriers and much more with this innovative jack designed to lift and support the weight of your workpiece while you anchor it into position.

High ceilings and ladder work are not a problem for this dynamic tool. Reach from 58" to a staggering height of 13'6". The industrial gas shock ensures a snug, stable support that stays in place while you complete the installation. Once your workpiece is secured into place, simply remove the All Jack™ by releasing the shock. More powerful than a typical support pole, the All Jack's gas shock can handle your most challenging jobs.



SCAN QR

CORDLESS CANNON 3K™

Speed, Versatility, and performance are all yours with iTOOLco's Cordless Cannon 3K™. This portable 3,000 lb. puller is intuitively designed to handle all of your day-to-day wire pulls.

The built-in capstan switch automatically turns the puller on and off. Simply tug on the rope to start the pull and slack off the rope to shut it down.

Delivers dynamic performance in remote locations or areas where power is not yet available.

The high-capacity rechargeable battery is long-lasting and delivers maximum power.

The Cannon 3K™ will even chew through a medium size run of 4 - 350 in 3" conduit with 4 - 90s 220' long in record time and still have half the battery life for your next pull.

SCAN QR



FOLLOW US:



PRINOTH Continues the Introduction of its Next Generation of vehicles with PANTHER T6, T8, and T12 Models



"The Legacy Standards Boosted to yet Another Level"

PRINOTH continues to unveil its next generation of PANTHER crawler carriers – the PANTHER T6, T8 and T12. After selling several hundred vehicles throughout the world in the last years, PRINOTH resets the productivity standards again with these new versions. By carefully listening to our customers and learning from their usage of our units, the legacy fleet has now been improved to boost the productivity levels. Specifically on the bare chassis version, the payload has been increased by about 2,000 lb per model and now allows for even more implements and tools to be installed which will provide even more versatility to an already very agile fleet.

Sturdier, even quicker

Following the improvements on the rotating dumper models, the PANTHER T14R and T7R, PRINOTH is happy to report efficient changes into the T6, T8 and T12 vehicles' design to improve their operation levels and maximize capacities. By boosting the speed on most of the units, especially the PANTHER T12 which now presents with a 35% speed increment, PRINOTH strives to help its customers do more with less like moving less dead weight, fitting bigger implement on smaller machines and continually increasing their profitabil-

MADE FOR **MORE** TO KEEP PACE WITH **YOU**



You begin each day before dawn with a drive and determination to do **more** than the day before. When you move at this pace, you know to do more you need equipment that is made for more. That's why our utility line and land clearing equipment, like our **Forestry Mulchers and Aerial Trimmers**, is built from the ground up to meet your needs, delivering:

More Power and Production
Lower Operating Costs
Greater Reliability
Better Safety Features
Superior Operator Comfort and Control

If you're ready to operate equipment that's made to keep pace with you, then we invite you to go to **morbarkdealers.com** to find your local authorized Morbark or Rayco dealer. Your dealer will work with you to assess your needs now and in the future, as well as offer equipment recommendations, financing options, wear parts and service if you should ever need it.

Equipment is available for **SALE** or **RENT**.



RAYCO
BY MORBARK

ity on the jobs that they land. After all, our company purpose statement is “Your success is our passion”. We’ve made tremendous productivity improvements on the PANTHER T12. These changes will bring the T12 neck to neck with its rotary sister model, the PANTHER T14R renowned for being best-in-class for ground speed levels.



“ Current business conditions dictate that “the doing more with less” approach is the name of the game. That is why the PRINOTH corporate culture calls for us to listen closely and communicate constantly with our customers, while using an agile approach to provide long lasting solutions to the specialized off-road construction market,” commented PRINOTH CEO, Alessandro Ferrari.

For the first time, the PANTHER T12 dumper model will be available with the unique spacious wide cab giving much more room for operators whilst keeping the steering wheel and foot throttle pedal driving system. “Our vehicles drive just like any truck and this system is part of providing comfort to the operator which we feel is as important to the operator as it is to the contractor who employs them. We’re constantly pushing the envelope and aiming to have the best operator comfort as it clearly boosts productivity,” commented Product Manager, Patrick Hébert.

The Best Uptime Everywhere

One aspect that PRINOTH and its team prides itself on is to simply provide customers with the best uptime with these vehicles. PANTHER Crawler Carriers continually provide unparalleled uptime and performance by virtue of the vehicles’ high quality components and built and by working into unit designs less hassle for scheduled or preventive maintenance involving key components that could put the machine down for hours. PRINOTH vehicles are built on an assembly line with strong processes and rigorous quality checks because the company targets nothing but the best quality standards. What’s more, PRINOTH has dedicated field testing engineers who put the units through extreme duty cycles in different tough conditions to ensure customers get working vehicles every time.

Rugged Dependability

STANDARD IN EVERY MACHINE WE BUILD!

Hogg & Davis has been proudly
manufacturing utility line equipment
for more than half a century.



Our trusted products are part
of the fleets and tool cribs of
nearly every investor-owned
power and communications
company in the United States
and Beyond.



HOGG & DAVIS, Inc.

HOGG & DAVIS, INC.

3800 EAGLE LOOP • ODELL, OR 97044

TEL 541.354.1001 • FAX 541.354.1080

WWW.HOGGDAVIS.COM

Built-in Versatility

The PANTHER T8 has often been referred to as the most versatile tracked vehicle on the market because of its size and capacities, but also because of the amazing possibilities this vehicle offers for both equipment and materials transportation to hard-to-access areas.

As part of its services to customers, PRINOTH offers a Factory Installation Guide and has a dedicated Factory Application Team who supports special requests from the field. Customers share their challenges and, the Factory Application team develops solutions together with them, listening and collaborating intensively throughout the project to ensure the best solutions are found for those specific needs.

Considering that PANTHER crawler carriers are all built on a 34-inch standard truck style chassis with available power pad and built-in hydraulic connections, equipping off-road vehicles with implements other than dump bodies is simple and safe with PRINOTH's units.

Technology Upgrades

This new generation of PANTHER vehicles are now powered by CAT double-label engine models EPA Tier 4 Final/EUROMOT Stage V, making PANTHER the first complete crawler carrier line-up using the new most demanding emission regulation engine technology. The engine upgrade is also supporting PRINOTH's Clean Motion philosophy for sustainability; the company's forward-thinking corporate philosophy synonymous not only with low energy consumption but also with environmental protection in ecologically sensitive areas. •





The New Standard for Linemen

At Tallman Equipment, our priority is to set the standard in the electric transmission and distribution industry with an all-inclusive approach to serving our customers. Our vision to deliver a trio of quality, convenience, and reliability is driven by listening and adapting to the needs of our customers. As the industry changes, so does Tallman. As a result, Tallman Equipment has become a unique company within our industry offering a full range of professional services including tool sales, product distribution, rentals, and repair. Tallman is already a trusted name in stringing blocks, cable assemblies, fiberglass, and rope products – and we are excited to announce the addition of our new Rubber Goods Testing Lab.

Our Services Include:

Groundset & Jumperset Manufacturing, Repair & Refurbishing

Transformer Sling Manufacturing & Rope Repair

Battery Power Tool & Equipment Repair

Fiberglass Tool Testing, Repair & Refinishing

Tool & Equipment Rental

Rubber Goods Testing & Refurbishment



Trust **TALLMAN**

www.tallmanequipment.com

Call Toll Free: 877-860-5666

International: 630-860-5666



Hydraulic Detachable Gooseneck

For more than two decades, our Hydraulic Detachable Gooseneck Trailer has been North America's bestselling detachable lowboy for construction professionals—and for good reason.

It's engineered to make unhooking, loading and unloading, and hooking up again a simple one-person operation.



trailking.com

Serving our customers since 1974.

in @trailkingind

DIAGNOSE YOUR OWN EQUIPMENT.



*Big updates on
CASE, New Holland, JCB
& John Deere*



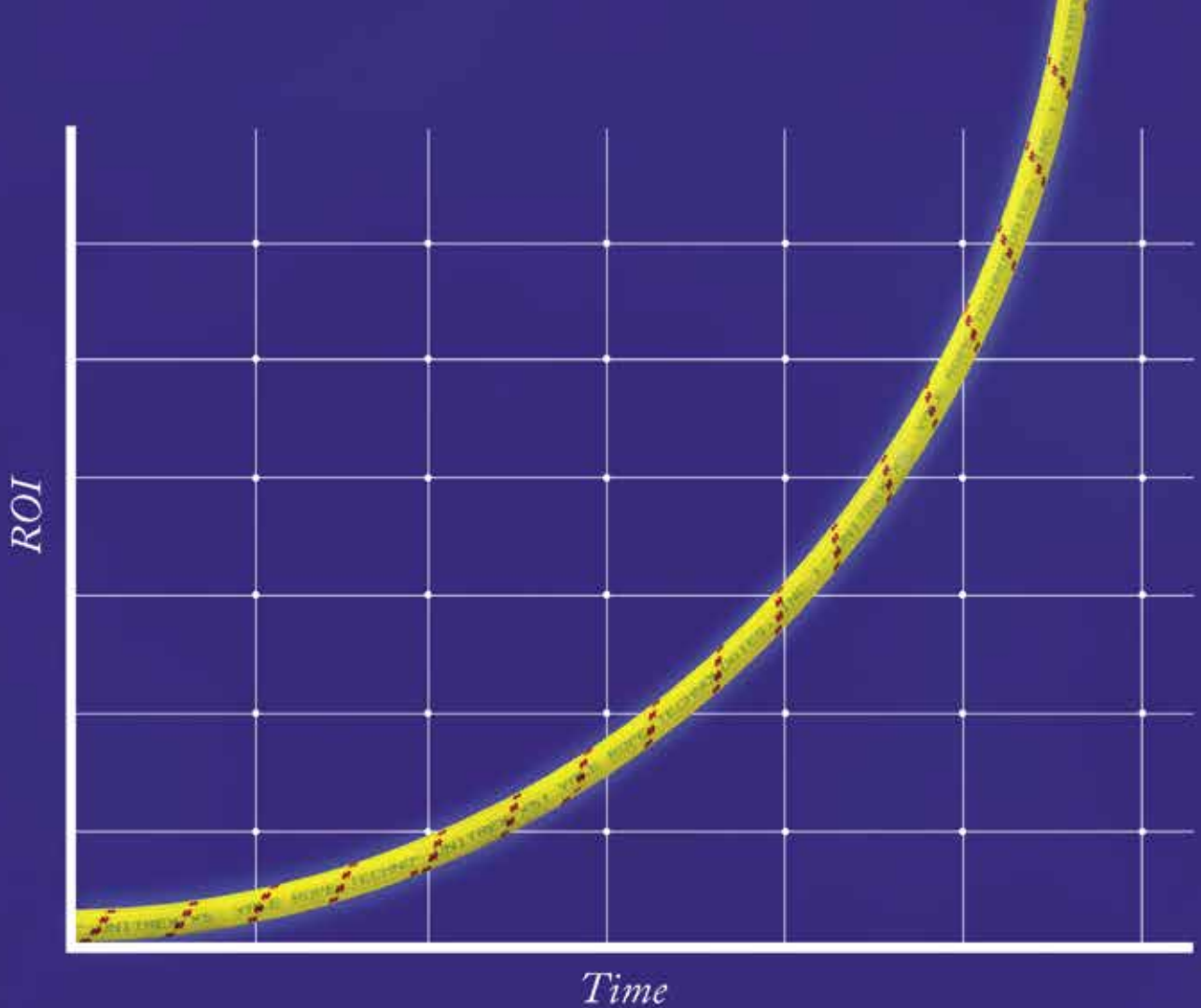
The **OHV Pro** is our answer to folks needing a stand alone, full featured scan tool for working on Agricultural, Construction, Mining and other Off-highway applications. Brands such as John Deere, Volvo, Caterpillar and CASE are covered. Perform bi-directional controls on hydraulics and special functions, such as injector coding, DPF regens and VGT calibrations.

8" Android Tablet | IP65 Rated | Bluetooth® Wireless | Easy Updates | Remote Technician

WWW.CANDOINTL.COM

CanDo
INTERNATIONAL, INC.

909/CANDO-11(226-3611)



Unitrex XS™ Max Wear. Unmatched performance in the field and in the boardroom.

Electric line stringing is easier and more economical with Unitrex™. Made with a core of Honeywell Spectra®, it is up to 10 times lighter than steel, while delivering comparable strength. The urethane-coated polyester jacket provides excellent abrasion resistance for great productivity that lasts.

To learn more, visit www.yalecordage.com

YALE CORDAGE
Performance. Passion. Possibilities.

77 Industrial Park Road | Saco, Maine 04072 | p (207) 282-3396, f (207) 282-4620

Monthly Buyer's Guide

- **Buccaneer Rope**
22319 Alabama Hwy.79
Scottsboro, Al 35768
800-358-7673
www.bucrope.com
- **Manitex USA**
3000 S. Austin Av.
Georgetown, TX. 78626
877-314-3390
www.manitex.com
- **Rome Plows**
475 N.6th. St.
Cedartown, GA. 30125
770-748-4450
www.romeplow.com
- **Cleanfix Reversible Fans**
250 Wright Blvd.
Stratford, ON, CN N4Z1H3
866-489-3267
www.cleanfix.org
- **M.B. Crushers**
8730 Technology Way
Reno, NV. 89521
855-MBCRUSH
www.mbcrusher.com
- **Terex Utilities**
1901 -14th AV. N.W.
Watertown, SD. 57201
800-233-2972
www.terex.com
- **Conduit Repair**
761 Enterprise Dr. # 1
St. George, UT 84790
800-670-1804
www.conduitrepair.com
- **Morooka USA**
11191 Air Park Rd.
Ashland, VA. 23005
www.morooka.com
- **U.T.V. INTERNATIONAL**
8850 Danley Rd.
Quebec, CN. H4T1M4
514-345-0990
www.utvint.com
- **Greaves USA**
30 Industrial PK.
Centerbrook, CT. 06409
800-243-1130
www.greaves-usa.com
- **Morbark**
8507 S. Winn RD.
Winn, MI. 48896
800-831-0042
www.morbark.com
- **Yale Cordage**
77 Industrial Park Rd.
Saco, ME. 04072
207-282-3396
www.yalecordage.com
- **Hogg Davis**
3800 Eagle Loop
Odell, OR. 97031
855-883-4909
www.hoggdavis.com
- **Ring Power**
9901 Ringhaven DR.
Orlando, FL. 32824
407-855-6195
www.ringpower.com

IN NEED OF REPLACEMENT RUBBER TRACKS?

We're proud that
Dominion Rubber Tracks are the
**#1 SELLING
RUBBER TRACK**
brand in America.

CALL US TODAY
TO GET THE BEST
PRICE ON
RUBBER TRACKS,
YANMAR PARTS,
AND
UNDERCARRIAGE PARTS

Ashland, VA >> Jacksonville, FL >>
Cincinnati, OH >> Portland, OR >>
Schenectady, NY >> Dallas, TX

DOMINION
Equipment Parts

800-365-7260
www.depparts.com

Ad Index

| Company | Pg. | Website |
|-------------------|-----|--|
| ASI | 10 | www.atlantic-screen.com |
| Buccaneer Rope | 14 | www.bucrope.com |
| Can Do Intl | 24 | www.candointl.com |
| Cleanfix | 11 | www.cleanfix.org |
| Conduit Repair | 7 | www.conduitrepair.com |
| Cross Country | 16 | www.crosscountryis.com |
| Dominion | 27 | www.depparts.com |
| Dorlen | 10 | www.oil-alert.com |
| eMars Inc | 28 | www.emarsinc.com |
| GoLight | 9 | www.golight.com |
| Greaves | 5 | www.greaves-usa.com |
| Hogg Davis | 21 | www.hoggdavis.com |
| iToolCo | 17 | www.itoolco.com |
| Jeffrey Machine | IFC | www.jeffreymachine.com |
| Krenz Vent | 2 | www.krenzvent.com |
| Manitex | BC | www.manitex.com |
| Morooka USA | 1 | www.morookacarriers.com |
| Rayco | 19 | www.rayco.com |
| Ring Power | IBC | www.ringpower.com |
| Tallman Equipment | 23 | www.tallmanequipment.com |
| Terex | 3 | www.terex.com |
| Tick Terminator | 16 | www.thetickterminator.com |
| Trail King | 24 | www.trailking.com |
| X Insurance | 15 | www.xinsurance.com |
| Yale Cordage | 25 | www.yalecordage.com |



On Site Employee Verification

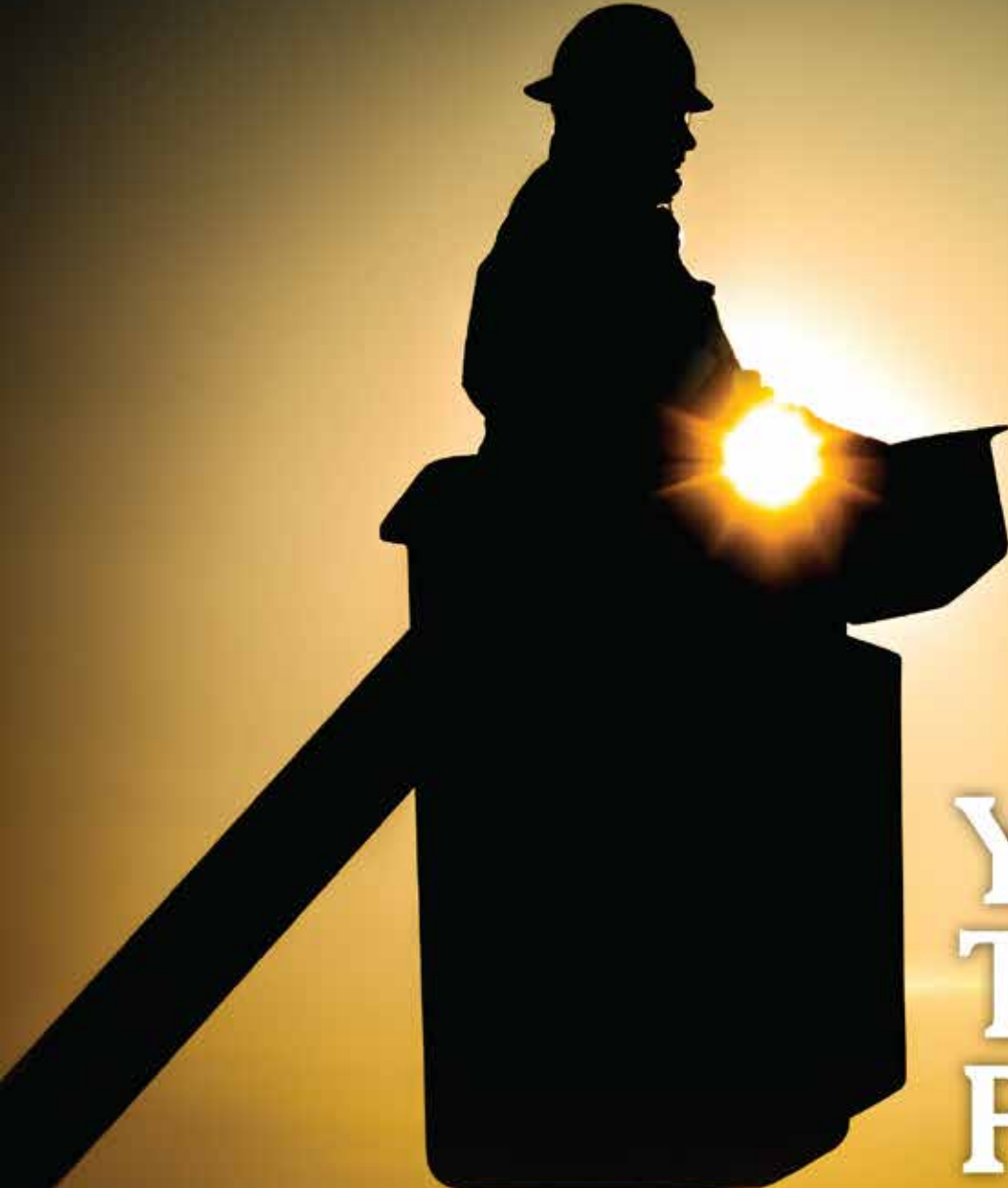
Bob Put In 9 Hours And 3 Minutes Of Work On Tuesday.
Stop Guessing. Start Verifying!

Always Know Who, When and Where with eMars Compliant Client and RFID
 Be Davis - Bacon Compliant in Minutes • Users Report 85% Savings of Money and Time • Alerts You of 30 Compliance Errors

Ph. 480-595-0466

Compliant Client by eMars

eMarsinc.com



Your Trusted Partner.

Partnering with Ring Power gives you access to a vast range of jobsite-tough products to round out your fleet. Ring Power carries machines from dozens of manufacturers to ensure you always have access to the right tools for your job.

Short-term, long-term or rental-purchase options available.



1-844-766-RENT • Utility.RingPower.com

Manitex

VISIT US AT: WWW.MANITEX.COM
STRENGTH. DEPENDABILITY. MANITEX.

THE RIGHT TOOL FOR THE JOB

THE M150 IS IDEAL FOR PLANT, OIL REFINERY OR WAREHOUSE APPLICATIONS. SITTING AT JUST OVER 11 FT. TALL THE M150 CAB-DOWN IS IDEAL WHEN SPACE IS LIMITED. WITH ITS COMPACT SIZE THIS LOW-PROFILE CRANE IS DESIGNED FOR HIGH PERFORMANCE WHILE REMAINING VERSATILE TO AN ARRAY OF WORK ENVIRONMENTS.

M150 - 15 TON

- ✓ Optimal operator comfort
- ✓ Fully adjustable controls
- ✓ Best in class load chart

Stand out safety features!
(Override key switch, rear view camera, ext. LMI utilization light)

