



THE

February 2022

UTILITYSOURCE

Products and Services for Today's Electric, Telecom, and CATV Utilities

G&W Electric Introduces
the World's First
Sub-Transmission
Recloser

PROUDLY
MADE IN THE USA

ALL YOU
NEED IS

love
TORQUE

► **BETEK**
Teeth 



**JEFFREY
MACHINE INC**
DRIVEN BY PRECISION

Birmingham, AL | 205.841.8600 | Euless, TX | 817.545.8677 | JeffreyMachine.com    

Rugged Dependability

STANDARD IN EVERY MACHINE WE BUILD!

Hogg & Davis has been proudly
manufacturing utility line equipment
for more than half a century.



Our trusted products are part
of the fleets and tool cribs of
nearly every investor-owned
power and communications
company in the United States
and Beyond.



HOGG & DAVIS, Inc.

HOGG & DAVIS, INC.

3800 EAGLE LOOP • ODELL, OR 97044

TEL 541.354.1001 • FAX 541.354.1080

WWW.HOGGDAVIS.COM

TUS Contents • February 2022

PG 4	JLG Establishes Developmental Partnership with RE2 Robotics
PG 10	G&W Electric Introduces the World's First Sub-Transmission Recloser
PG 16	Platinum Tools® Features Fiber Optic Cleaner Line at 2022 ISC West
PG 20	LineWise Develops New Wire Holders with Load-Rated Gates for Improved Safety, Versatility
PG 24	Vader Combo for Ultimate in Anti-Fog and Full-Face Protection
PG 26	Monthly Buyer's Guide
PG 28	Ad Index



Get Cool!



Extend transformer life!

Increase transformer capacity up to 166%!

- expert technical assistance
- large inventory
- low sound levels
- one-piece cast aluminum blades
- energy-efficient motors
- galvanized or stainless steel guards



pub. box 187 germantown, wisconsin 53022 262.355.3318 www.krenzvent.com

THE UTILITYSOURCE

Products and Services for Today's Electric, Telecom, and CATV Utilities

Vol. 22 Issue 2

PUBLISHER

Glen Hobson
205-441-5591
glen@tipsmag.net

ASSOCIATE PUBLISHER

Steven Goodwin
205-624-2181
steve@handfmedia.net

ADMINISTRATIVE DIRECTOR

Steven Hobson
steven@tipsmag.net

EDITOR

Brandon Greenhill
brandon@handfmedia.net

CREATIVE/ WEB DIRECTOR

Jacklyn Greenhill
jacklyn@handfmedia.net

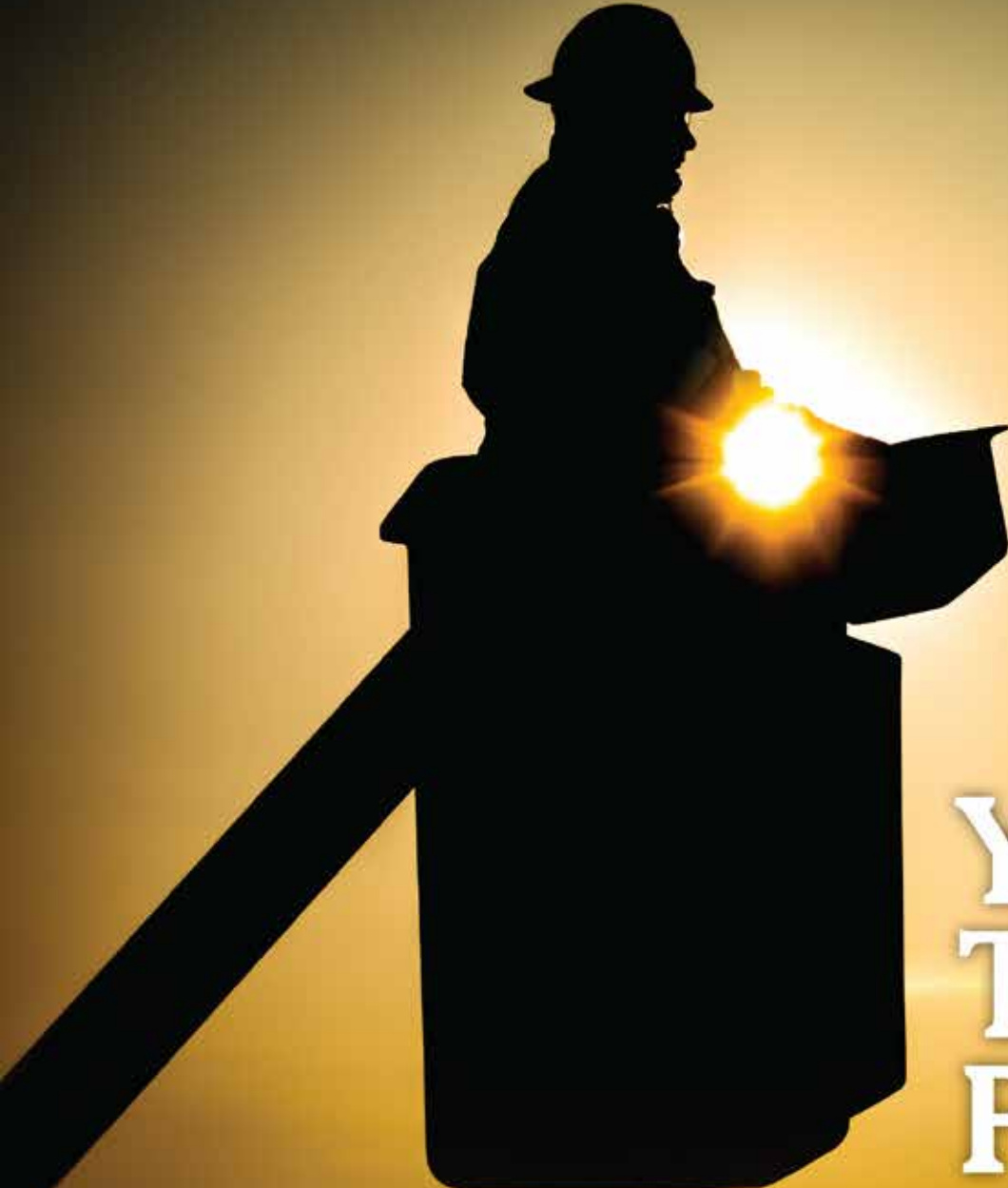
P.O. Box 1568 • Pelham, AL 35124
Phone: 205-441-5591 • Fax: 205-624-2181
www.theutilitysource.net
info@theutilitysource.net



The Utility Source™ is published twelve times a year on a monthly basis by H & F Media, Inc. *The Utility Source*™ is distributed free to qualified subscribers. Non-qualified subscription rates are \$57.00 per year in the U.S. and Canada and \$84.00 per year for foreign subscribers (surface mail). U.S. Postage paid at Birmingham, Alabama and additional mailing offices.

The Utility Source™ is distributed to Power, Telcom and CATV Utilities and Utility Contractors throughout the USA. Publisher is not liable for all content (including editorial and illustrations provided by advertisers) of advertisements published and does not accept responsibility for any claims made against the publisher. It is the advertiser's or agency's responsibility to obtain appropriate releases on any item or individuals pictured in an advertisement. Reproduction of this magazine in whole or in part is prohibited without prior written permission from the publisher.

POSTMASTER: Send address changes to
H & F Media, Inc. P.O. Box 1568
Pelham, AL 35124
PRINTED IN THE USA



Your Trusted Partner.

Partnering with Ring Power gives you access to a vast range of jobsite-tough products to round out your fleet. Ring Power carries machines from dozens of manufacturers to ensure you always have access to the right tools for your job.

Short-term, long-term or rental-purchase options available.



1-844-766-RENT • Utility.RingPower.com



JLG Establishes Developmental Partnership with RE2 Robotics

Integrating and expanding robotic solutions for access equipment

JLG Industries, Inc., an Oshkosh Corporation company [NYSE:OSK] and a leading global manufacturer of mobile elevating work platforms (MEWPs) and telehandlers, is pleased to announce a developmental partnership with RE2 Robotics, a leading developer of intelligent robotic mobile manipulation systems. The collaboration of these two market leading companies is intended to advance the integration of robotics with access equipment to deliver improved operator safety and enhanced productivity on job sites.

“Robotic technologies have long been used in a variety of industries,” says Frank Nerenhausen, Oshkosh Corporation executive vice president and president, JLG Industries. “The productivity imperative, along with the COVID-19 pandemic have accelerated the need for and adoption of robotic technologies beyond the factory floor. In fact, a large focal area in construction and industrial applications today is remote operation of equipment that keeps workers out of harm’s way.”



The New Standard for Linemen

At Tallman Equipment, our priority is to set the standard in the electric transmission and distribution industry with an all-inclusive approach to serving our customers. Our vision to deliver a trio of quality, convenience, and reliability is driven by listening and adapting to the needs of our customers. As the industry changes, so does Tallman. As a result, Tallman Equipment has become a unique company within our industry offering a full range of professional services including tool sales, product distribution, rentals, and repair. Tallman is already a trusted name in stringing blocks, cable assemblies, fiberglass, and rope products – and we are excited to announce the addition of our new Rubber Goods Testing Lab.

Our Services Include:

Groundset & Jumperset Manufacturing, Repair & Refurbishing

Transformer Sling Manufacturing & Rope Repair

Battery Power Tool & Equipment Repair

Fiberglass Tool Testing, Repair & Refinishing

Tool & Equipment Rental

Rubber Goods Testing & Refurbishment



Trust **TALLMAN**

www.tallmanequipment.com

Call Toll Free: 877-860-5666

International: 630-860-5666

Nerenhausen continues, “While JLG has been leveraging and developing robotics in specific areas of our business for quite some time, our focus has shifted to developing and incorporating solutions that integrate with our lifts to help offset labor shortages and provide assistive technologies to a now 5-generation workforce. The relationship with RE2 allows us to partner with an organization who has the same drive for excellence as JLG, enabling us to accelerate the integration of robotics across our product line to move the access industry forward.”

RE2 was recently awarded a project by the U.S. Department of Energy to develop a robotic solar field construction system for the outdoor autonomous manipulation of photovoltaic panels. The RE2 Sapien™ 6M robotic arm, along with RE2 Detect™ and RE2 Intellect™ software are being integrated with a JLG® aerial work platform to support the transfer, lifting and placement of the photovoltaic modules. JLG is supplying engineering support during the technology development phase of the project. Joint work is being completed on the mechanical and control system interface between the robotic arm and the lift. The resulting integration will provide the foundation for the robotic solar field construction system.

Skilled workers will supervise the robotic solar field construction system, which uses computer vision to autonomously retrieve solar panels from a delivery vehicle and precisely place the panels onto a racking



Hydraulic Detachable Gooseneck

For more than two decades, our Hydraulic Detachable Gooseneck Trailer has been North America's bestselling detachable lowboy for construction professionals—and for good reason. It's engineered to make unhooking, loading and unloading, and hooking up again a simple one-person operation.



trailking.com

Serving our customers since 1974.

[in](#) [@](#) [t](#) [f](#) [v](#) [@trailkingind](#)

Making perfect connections has never been simpler. In fact, now it's a **SNAP!**

NEW ***SNAP Connectors*** from Greaves. A revolutionary compression connector concept that gets the job done with just a few turns of a standard wrench!

- ▶ Time-saving, easy installation
- ▶ Superior pull-out strength and conductivity
- ▶ No bulky and costly tools and dies



GREAVES

WE HAVE THE ROPE TO GET THE JOB DONE.



BUCCANEER
rope company
Providing strength & stability, with a twist.

system. An onsite worker then follows to secure the panel. The RE2 Sapien intelligent robotic arm offers a high strength-to-weight ratio, precise control and human-like dexterity to place the burden of the heavy lifting on the robotic system. This system is expected to significantly improve productivity and reduce the amount of time required to construct a solar field.

"The future of work is here," says Jorgen Pedersen, RE2's President and CEO. "Humans and robots are working more closely together, and the construction industry is no exception. Our developmental partnership with JLG will enable us to apply our proven robotic technology to specific applications, including those that require working at height and repetitive lifting such as solar field construction."

"Developmental partnerships, acquisitions and organic product innovation serve as the three core pillars of our growth philosophy. When combined, they facilitate our ability to remain agile and accelerate the development of the future technologies that will advance the construction industry," says Nerenhausen. "Our work with RE2 Robotics is an excellent example of how we are driving progress with companies who are experts and leaders in their respective fields."

According to Nerenhausen and Pedersen, a concept machine is forthcoming, with demonstrations planned to gather additional feedback in the near future.

For more information on JLG products and services, please visit www.JLG.com •

INNOVATIONS

Faster Safer Workspace

iTOOLco.



ALL JACK™

Increase productivity and decrease fatigue using iTOOLco's All Jack™. Install pipe, lights, cabinets, drywall, temporary dust barriers and much more with this innovative jack designed to lift and support the weight of your workpiece while you anchor it into position.

High ceilings and ladder work are not a problem for this dynamic tool. Reach from 58" to a staggering height of 13'6". The industrial gas shock ensures a snug, stable support that stays in place while you complete the installation. Once your workpiece is secured into place, simply remove the All Jack™ by releasing the shock. More powerful than a typical support pole, the All Jack's gas shock can handle your most challenging jobs.



SCAN QR

CORDLESS CANNON 3K™

Speed, Versatility, and performance are all yours with iTOOLco's Cordless Cannon 3K™. This portable 3,000 lb. puller is intuitively designed to handle all of your day-to-day wire pulls.

The built-in capstan switch automatically turns the puller on and off. Simply tug on the rope to start the pull and slack off the rope to shut it down.

Delivers dynamic performance in remote locations or areas where power is not yet available.

The high-capacity rechargeable battery is long-lasting and delivers maximum power.

The Cannon 3K™ will even chew through a medium size run of 4 - 350 in 3" conduit with 4 - 90s 220' long in record time and still have half the battery life for your next pull.

SCAN QR



FOLLOW US:





G&W Electric Introduces the World's First Sub-Transmission Recloser

Revolutionary turnkey solution for utilities to improve system reliability and grid resiliency

G&W Electric, a global supplier of electric power equipment since 1905, today announced the launch of its Viper®-HV Recloser up to 72.5kV. The market's first high-voltage pole top recloser supports faster overcurrent protection through fault isolation and automatic restoration for temporary faults on overhead sub-transmission lines.

"As we've seen recently, the fragile state of our nation's electrical infrastructure has severe consequences to our safety and economy," said John Mueller, chairman and owner of G&W Electric. "We are committed to partnering with utilities to identify vulnerabilities and deliver state-of-the-art solutions like the Viper-HV recloser for functionality right on the sub-transmission lines. Until today, that was only available by installing high-cost substations."

Uniquely designed as a self-contained system featuring three-in-one capabilities of a recloser, CTs, and integrated internal voltage sensors, the Viper-HV provides utilities improved performance on a pole to

automatically clear any temporary faults and isolate only that section of the grid to protect additional lines from going down and preventing an entire region from losing power.

The Viper-HV offers utilities installation flexibility through a variety of configurations, including phase-over-phase and cross-arm versions to match existing line infrastructure. G&W Electric offers site-ready designs with pre-installed accessories and flexible solutions tailored to meet environmental challenges.

"In an effort to develop the grid of the future, the Viper-HV recloser also offers solutions that will help utilities reduce future cost such as maintenance, replacing equipment and outage penalties," added Mueller.

Without the need for oil or gas, the Viper-HV reduces routine maintenance and improves personnel safety. Additionally, the vacuum interrupter and all other energized parts are sealed within field proven solid-dielectric insulation, providing optimum operator safety and additional protection to discourage wildlife interference.

For additional information on the Viper-HV Recloser, please visit and to see the unveiling visit

www.solutions.gwelec.com/high-voltage/ •



Easy to Use & Learn

Buy or Rent Up to 100 Systems

Domestic Tech Support

Wizard & AI Tools Save Time and Eliminate Errors

Renewable Warranties that Include Calibrations

1-2 Day Shipping on Most Orders



Most Popular:
PK3564-PRO System



Made in USA
with US &
Imported Parts

**NETA 2022
POWERTEST**
March 1 • Denver, CO

Come See Us at
Booth #908
for exclusive
offers!

PowerSight.com • sales@powersight.com • 1-925-444-7027



World of Asphalt® 2022

SHOW & CONFERENCE



LEADING ASPHALT TRADE SHOW AND CONFERENCE

"This was my first show and it was a great experience. Being able to see and talk with all of the vendors within our industry was a huge benefit for my current position and professional growth. I now feel as though I have a better understanding of our industry and what vendors are available as well as technologies. This adds excellent value to our organization." — Jamie Bailey, Lehigh Hanson

March 29-31, 2022 | Nashville, Tennessee

Register for tickets at worldofasphalt.com

NEW COVID-19 GOVERNMENT REQUIREMENTS

Required Vaccinations for all Federal Workers and for Millions of Contractors that Do Business with the Federal Government



Finds and Notifies You of 31 Possible Davis Bacon Compliance Errors
80% Savings of Time and Money Compared to Manual Payroll Preparation
5 Minute Friday Payroll • Encrypted • Internet based
58,000 + Construction Company Clients • Avoid Jail Time and Costly Fines

eMarsinc.com

480-595-0466

Stay In Compliance with the Davis-Bacon Act
Easily Know When Each Employee was Immunized



Compliant
client by eMars

CROSS COUNTRY INFRASTRUCTURE SERVICES INC.

Your Source for Construction Equipment Rentals and Supplies

SUPPLIES INCLUDE: Abrasive & Cutting Tools > Environmental > Safety Products > Valves, Fasteners & Fittings > Lifting & Rigging > Piping Products > Pipe Testing Equipment > and Much More

EQUIPMENT RENTALS INCLUDE:



Pumps



Padding Machines



Pipelayers



Flat Bed Tractors



Excavators



Trenchers



Dozers

For Rentals And Supplies Visit CrossCountryIS.com Or Call **1-855-955-CCIS (2247)**

DIAGNOSE YOUR OWN EQUIPMENT.



Big updates on
**CASE, New Holland, JCB
& John Deere**



The **OHV Pro** is our answer to folks needing a stand alone, full featured scan tool for working on Agricultural, Construction, Mining and other Off-highway applications. Brands such as John Deere, Volvo, Caterpillar and CASE are covered. Perform bi-directional controls on hydraulics and special functions, such as injector coding, DPF regens and VGT calibrations.

8" Android Tablet | IP65 Rated | Bluetooth® Wireless | Easy Updates | Remote Technician

WWW.CANDOINTL.COM

CanDo
INTERNATIONAL, INC.

909/CANDO-11(226-3611)

WE KEEP AMERICA ON TRACK



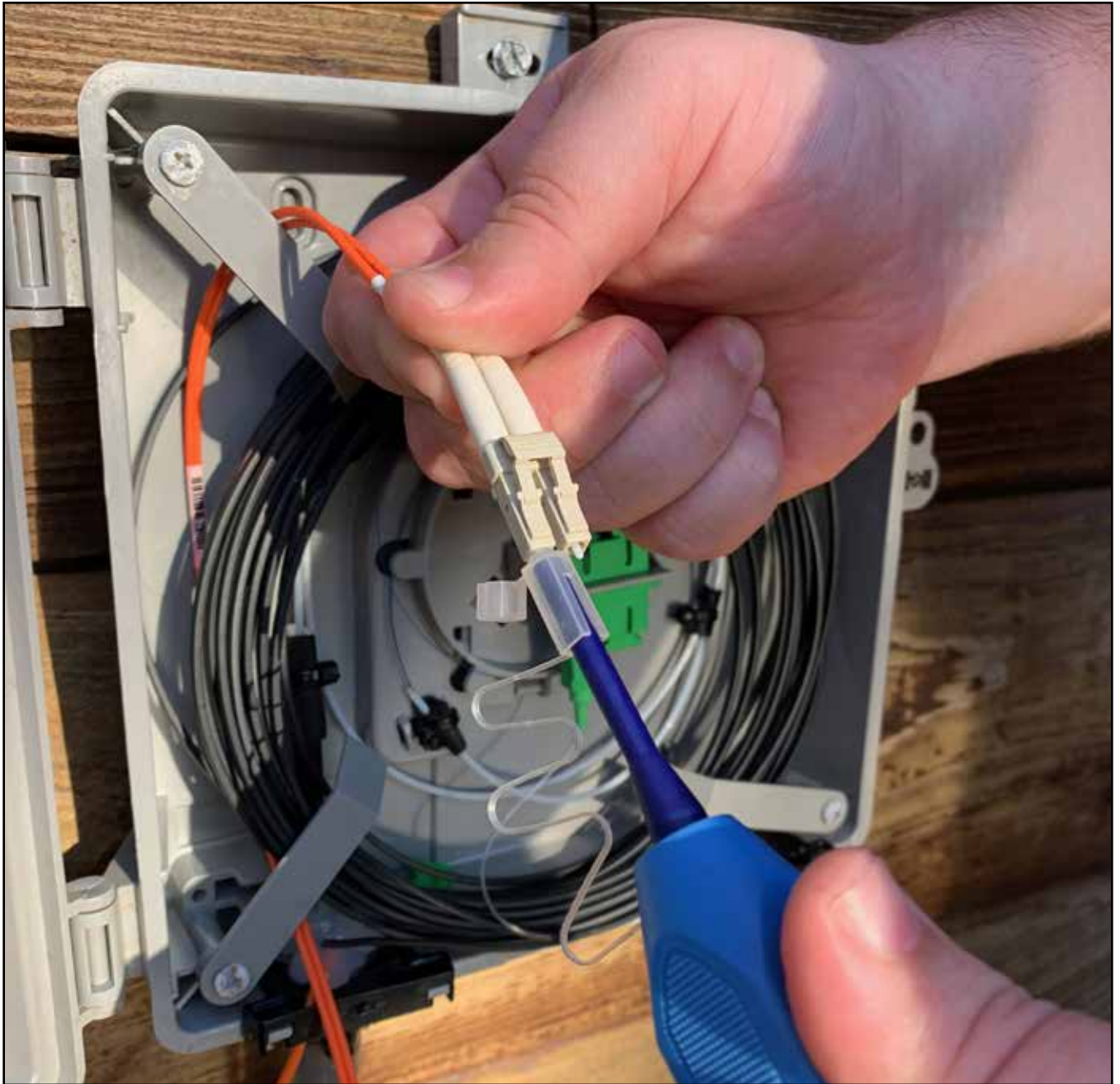
MOROOKA

UTILITY CARRIERS

Call: 800-365-7260

OR

Visit: morookacarriers.com



Platinum Tools® Features Fiber Optic Cleaner Line at 2022 ISC West

*Available in 1.25mm and 2.50mm Sizes, the Color-Coded, Pen-Style
Cleaners Work with Virtually All Common Fiber Optic Connector Types*

Platinum Tools® (www.platinumtools.com), the leader in solutions for the preparation, installation, hand termination, and testing of wire and cable, is proud to announce it will feature its Fiber Optic Cleaner line during ISC West 2022, held in Las Vegas, Nev. from March 23-25 at the Venetian Expo and Convention Center, booth #3037. The two new color-coded cleaners are available in 1.25mm (p/n FC125) and 2.50mm (p/n FC250) sizes.

REPAIR CONDUIT IN A SNAP!

- No Tape
- No Plastic Straps,
- No Metallic Straps

NO KIDDING!

**Designed especially for
power, communications,
and fiber optics**



"The World Leader In Split Conduit Products"



Conduit Repair Systems, Inc.

The World Leader In Split Conduit Products

800-670-1804

fax: 435-673-8724

email: crs@conduitrepair.com



**Step 1: Remove
Damaged Conduit**



**Step 2: Cut Split
Duct Conduit to Fit**



**Step 3: Snap in
Place**



**Step 4: Attach
Adapters**



**Step 5: Finish Job
in Record Time**

Please Visit Our Website at WWW.CONDUITREPAIR.COM

“These new, easy-to-use, pen-style cleaners have been designed to work with virtually all common fiber optic sizes and connector types, allowing you to clean connectors and ports for the best possible optical performance,” explained Sean Rothermel, Platinum Tools product manager. “With two sizes with color-coded tips for easy identification, all you need to do is push to effortlessly clean fiber ports or connectors. It really is that simple.”

Additional features and specifications include:

- Silk thread provides more than 900 cleanings and advances automatically after each use for particle-free connections
- Single push cleans with ease
- Unique two-position cap cleans ports and connectors with the same device
- Weight: only 2oz.
- Length: under nine inches (225mm)
- Blue tip = 1.25mm size for LC & MU connectors
- White tip = 2.50mm size for SC, FC & ST connectors
- MSRP for both sizes: \$87.50

For additional pricing and more information on Platinum Tools and its complete product line, please visit www.platinumtools.com, call (800) 749-5783, or email info@platinumtools.com.

www.platinumtools.com •



THE FUTURE IS BRIGHT.

WITH A NEW MANUFACTURING FACILITY, ADDITIONAL
SERVICE CENTERS AND EXPANDED SERVICE AND PARTS TEAM



We're more prepared than ever to deliver.

For more than 75 years, Terex Utilities has been a pioneer of insulated and digging equipment for the electric utility industry. Along the way, we've established a pattern of innovation and continuous improvement in order to deliver solutions so linemen can be productive and keep the lights on for their customers. This is an exciting time in Terex Utilities' history – with strategic investments being made in our manufacturing capabilities, our service footprint, new products, team members and overall customer experience. The future is looking bright, and we're excited to continue delivering equipment and service solutions to the electric utility industry – now better than ever.

Give us a call at 844-TEREX-4U for your equipment, service and parts needs.

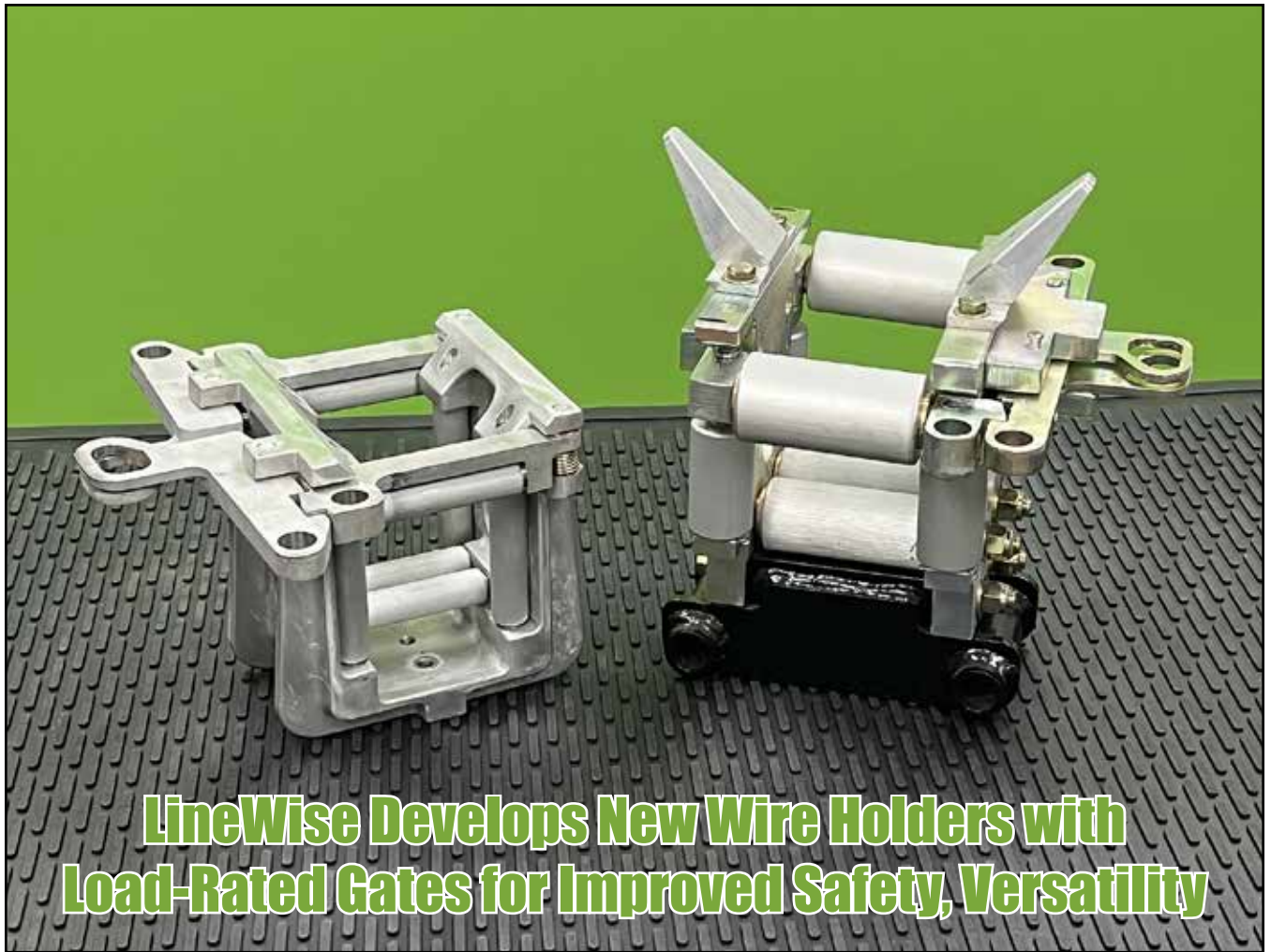
www.terex.com/utilities



TEREX®

WORKS FOR YOU.™

©2021 Terex Corporation. Terex, the Terex Crown design and Works For You are trademarks of Terex Corporation or its subsidiaries. All rights reserved. January 2021.



LineWire Develops New Wire Holders with Load-Rated Gates for Improved Safety, Versatility

LineWire introduces two Swing Gate Wire Holders to directly replace most existing wire holders on the market. The new models can be used on both vertical and horizontal construction and are the only wire holders available with a load-rated gate.

For maximum safety, the Swing Gate Wire Holders have two side-swinging redundant gates that can be opened and closed individually or together by hand or with a hot stick. Aluminum rollers are included on all four sides of the units for conductor protection. Unlike traditional wire holders, this unique, patent-pending design allows contractors to safely roll captured lines from horizontal to vertical construction or vice versa.

Model SGWH 500 is rated for a 500-pound downward load, 500-pound side load and 200-pound gate load. It is compatible with the LineWire TLL-500A Series 1 and Series 3 Triple Line Lifters and can also be adapted to fit the material handling jib on most bucket trucks.

Stryker ST Series

Remote Control Spotlight



Hardwire Control Option

Wired Dash Mount



Wireless Remote Option

Operates up to 80' from light



ST SERIES BY GOLIGHT

- Multiple Unit Selector Function
 - 2 units with 1 remote
- Home Position Function
- Fluorescent Remote Buttons
- New Wireless Technology Benefits
 - Simultaneous Pan + Tilt
 - Multiple users can operate lights in close proximity without interference
- Stainless Steel Mounting Brackets
- Smart Programming Logic
 - Quick and simple pairing
- UV and Saltwater Resistant
- 5 Year Limited Warranty

GOLIGHT INC | 800.557.0098 | 308.278.3131 | golight.com



Atlantic Screen & Mfg., Inc.

- Well Rehab. Products
- Manholes
- Bentonite
- Filter Sock
- Inline Chemical Mixers
- Sampling Ballers
- Clear PVC Pipe
- Locking Caps

Manufacturers of Slotted & Preformed Pipe
ranging from 1/2" to 24" in diameter

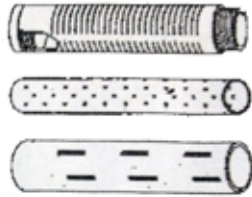
302-684-3197

FAX 302-684-0643

142 Broadkill Rd. • Milton, DE 19968

www.atlantic-screen.com

email: atlantic@ce.net



The SGWH 2500 has 2,500-pound downward and side load ratings, plus a 500-pound gate load rating. It is currently available on the LineWise TLL-1300, TLL-2000, TLL-2500, HLL-10-4000 and HLL-10-8000 Hydraulic Line Lifters.

LineWise is a division of Diversified Products. The company designs, engineers and manufactures a full line of utility products, including line lifters, insulated work platforms, spacer carts, phase lifters, transmission temporary conductor supports and the Buddy Bushing transmission hardware reinforcement system. For more information, contact Diversified Product Development, 700 Research Avenue, Waco, Texas 76705, phone 254-757-1177, fax 254-757-1188, or visit the website at www.line-wise.com



OIL ALERT[®] LIQUID LEAK DETECTOR

DETECT OIL LEAKS AND SPILLS...FAST!

- AVOID OPERATIONS SHUT-DOWN
- REDUCE ENVIRONMENTAL RISKS
- MINIMIZE COSTLY CLEAN-UP
- MONITOR OFF-SITE EQUIPMENT

A small amount of oil (1/32 inch) seeping under Oil Alert activates its loud "on/off" alarm and/or relay contact output. The low profile dome shaped unit guards against undetected leakage in areas of oil lubricated / hydraulic equipment, stand-by generators, pressurized piping and fuel oil storage locations...

5 year Limited Warranty

DORLEN Products Inc.

6615 W. Layton Ave. Milwaukee, WI. 53220

Go to WWW.OIL-ALERT.COM

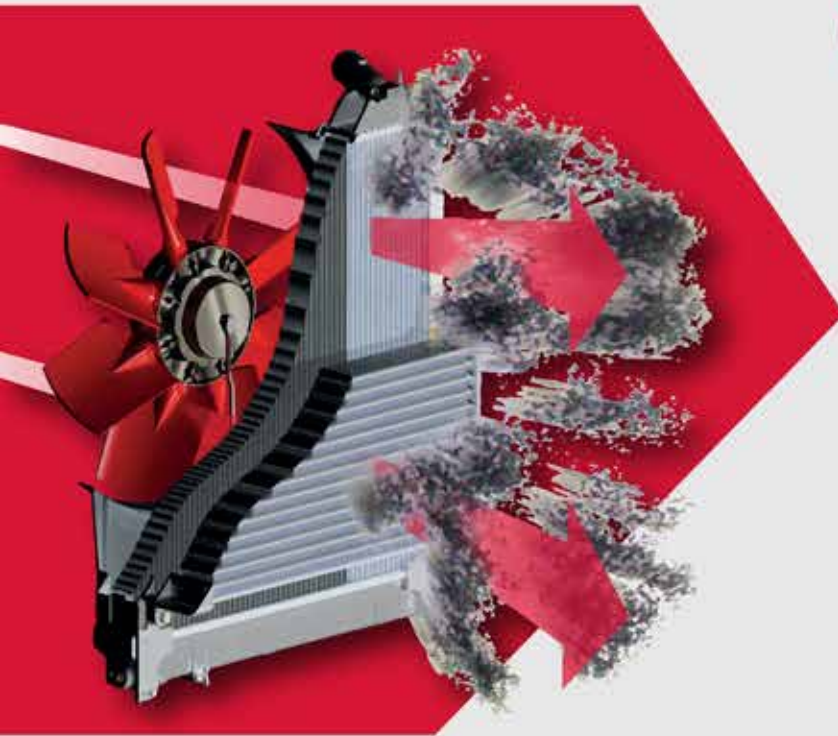
OR CALL: 1-800-533-6392

FOR MORE INFO!!



CLEANFIX.ORG

Reversible Fans For Radiator Cleaning



CLEAN RADIATORS

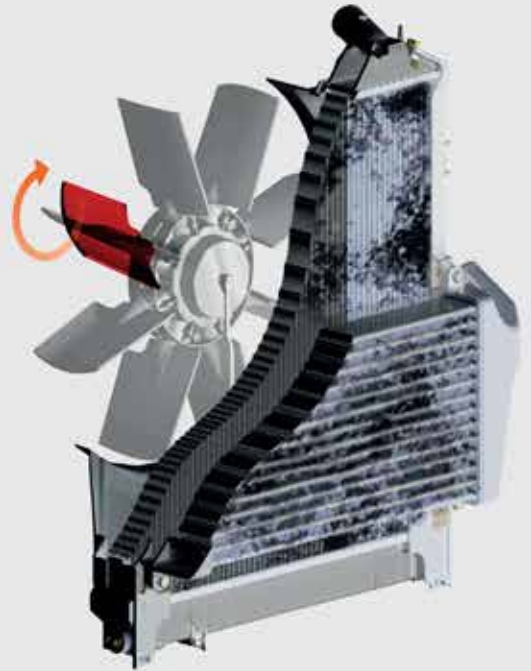
= Increases Power 

= Increases Operator Comfort 

= Reduces Downtime 

= Saves Fuel 

More than you think!



web cleanfix.org

youtube



cleanfixgf

facebook



CleanfixReversibleFans

Vader Combo for Ultimate in Anti-Fog and Full-Face Protection

Brass Knuckle's proprietary coating, innovative design protect the face like no other

Foul, nasty, or painful debris. Spark. Liquid spray-back. All can slow the most seasoned employee and, worse, bring the threat of occupational injury. So, what protection do workers want on their face when the situation hits the fan? Not a standard goggle that leaves the rest of their face exposed. Not a traditional face shield, with huge gaps that are easily penetrated and allow major neck exposure.

The answer is Brass Knuckle® Vader Combo, the goggle and face shield in one, with industry-leading BK-Anti-Fog for the best visibility available. Its integrated face shield offers 180-degree peripheral vision and face coverage. Ultra-soft conditioned rubber forms a splash barrier. Because the face shield isn't attached to a hard hat, it provides unprecedented mobility and visibility — the shield goes wherever the wearer's head goes.

Brass Knuckle has created a product primer to help industry vets more accustomed to old-style face shields better understand the differences inherent in Vader Combo. Readers are encouraged to download the fact sheet and watch the BKTv video of it at work in real-world conditions.

BK-Anti-Fog exceeds the industry's most stringent anti-fog standard and makes Vader Combo the first choice in face protection for construction,



grinding, water and wastewater, jan/san, or any application with sprayback that can cause lens fog. The ANSI-rated, military-style splash goggle also includes a durable anti-scratch treatment and is D3 rated for droplet and splash protection. The built-in venting system helps reduce the potential for moisture buildup, helping to maintain clear vision.

If a job exposes its workers to any kind of wetness or debris being thrown into their faces, the Vader Combo brings the necessary protection. It protects from the sun, from impact, from splash—and even from dangerous, temporarily impaired vision caused by fog.

www.brassknuckleprotection.com •

MADE FOR **MORE** TO KEEP PACE WITH **YOU**



You begin each day before dawn with a drive and determination to do **more** than the day before. When you move at this pace, you know to do more you need equipment that is made for more. That's why our utility line and land clearing equipment, like our **Forestry Mulchers and Aerial Trimmers**, is built from the ground up to meet your needs, delivering:

More Power and Production
Lower Operating Costs
Greater Reliability
Better Safety Features
Superior Operator Comfort and Control

If you're ready to operate equipment that's made to keep pace with you, then we invite you to go to **morbarkdealers.com** to find your local authorized Morbark or Rayco dealer. Your dealer will work with you to assess your needs now and in the future, as well as offer equipment recommendations, financing options, wear parts and service if you should ever need it.

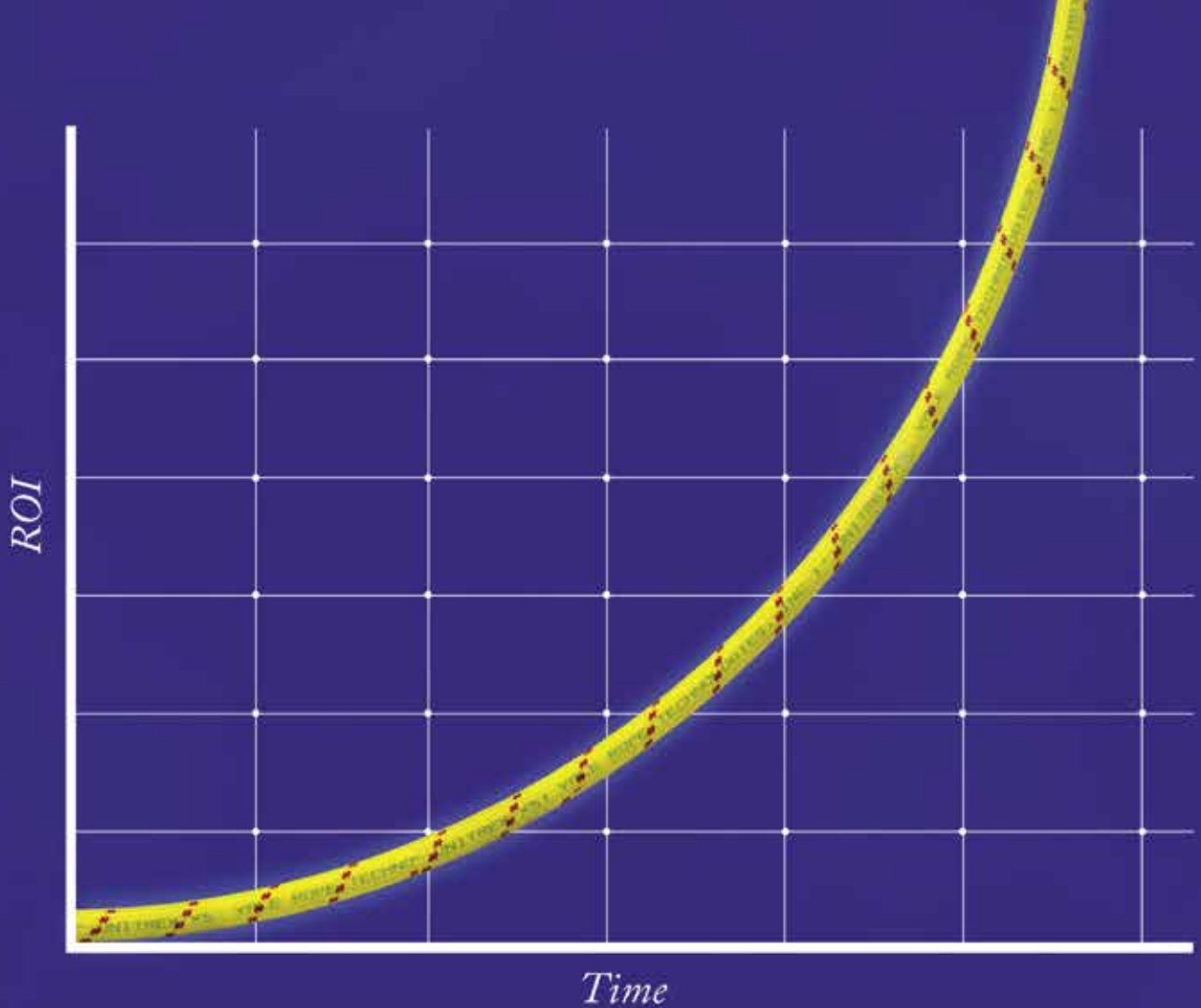
Equipment is available for **SALE** or **RENT**.



RAYCO
BY MORBARK

Monthly Buyer's Guide

- **Buccaneer Rope**
22319 Alabama Hwy.79
Scottsboro, Al 35768
800-358-7673
www.bucrope.com
- **Manitex USA**
3000 S. Austin Av.
Georgetown, TX. 78626
877-314-3390
www.manitex.com
- **Rome Plows**
475 N.6th. St.
Cedartown, GA. 30125
770-748-4450
www.romeplow.com
- **Cleanfix Reversible Fans**
250 Wright Blvd.
Stratford, ON, CN N4Z1H3
866-489-3267
www.cleanfix.org
- **M.B. Crushers**
8730 Technology Way
Reno, NV. 89521
855-MBCRUSH
www.mbcrusher.com
- **Terex Utilities**
1901 -14th AV. N.W.
Watertown, SD. 57201
800-233-2972
www.terex.com
- **Conduit Repair**
761 Enterprise Dr. # 1
St. George, UT 84790
800-670-1804
www.conduitrepair.com
- **Morooka USA**
11191 Air Park Rd.
Ashland, VA. 23005
www.morooka.com
- **U.T.V. INTERNATIONAL**
8850 Danley Rd.
Quebec, CN. H4T1M4
514-345-0990
www.utvint.com
- **Greaves USA**
30 Industrial PK.
Centerbrook, CT. 06409
800-243-1130
www.greaves-usa.com
- **Morbark**
8507 S. Winn RD.
Winn, MI. 48896
800-831-0042
www.morbark.com
- **Yale Cordage**
77 Industrial Park Rd.
Saco, ME. 04072
207-282-3396
www.yalecordage.com
- **Hogg Davis**
3800 Eagle Loop
Odell, OR. 97031
855-883-4909
www.hoggdavis.com
- **Ring Power**
9901 Ringhaven DR.
Orlando, FL. 32824
407-855-6195
www.ringpower.com



Unitrex XS™ Max Wear. Unmatched performance in the field and in the boardroom.

Electric line stringing is easier and more economical with Unitrex™. Made with a core of Honeywell Spectra®, it is up to 10 times lighter than steel, while delivering comparable strength. The urethane-coated polyester jacket provides excellent abrasion resistance for great productivity that lasts.


To learn more, visit www.yalecordage.com

YALE CORDAGE
Performance. Passion. Possibilities.

77 Industrial Park Road | Saco, Maine 04072 | p (207) 282-3396, f (207) 282-4620

Ad Index

Company	Pg.	Website
ASI	22	www.atlantic-screen.com
Buccaneer Rope	8	www.bucrope.com
Can Do Intl	14	www.candointl.com
Cleanfix	23	www.cleanfix.org
Conduit Repair	17	www.conduitrepair.com
Cross Country	14	www.crosscountryis.com
Dorlen	22	www.oil-alert.com
eMars Inc	13, 28	www.emarsinc.com
GoLight	21	www.golight.com
Greaves	7	www.greaves-usa.com
Hogg Davis	1	www.hoggdavis.com
iToolCo	9	www.itoolco.com
Jeffrey Machine	IBC	www.jeffreymachine.com
Krenz Vent	2	www.krenzvent.com
Morooka USA	15	www.morookacarriers.com
Powersight	11	www.powersight.com
Rayco	25	www.rayco.com
Ring Power	3	www.ringpower.com
Tallman Equipment	5	www.tallmanequipment.com
Terex	19	www.terex.com
Trail King	6	www.trailking.com
World of Asphalt	12	www.worldofasphalt.com
Yale Cordage	BC	www.yalecordage.com



On Site Employee Verification

Bob Put In 9 Hours And 3 Minutes Of Work On Tuesday.
Stop Guessing. Start Verifying!

Always Know Who, When and Where with eMars Compliant Client and RFID
 Be Davis - Bacon Compliant in Minutes • Users Report 85% Savings of Money and Time • Alerts You of 30 Compliance Errors

Ph. 480-595-0466

Compliant Client by eMars

eMarsinc.com

INNOVATIONS

Faster Safer Workspace

iTOOLco.



ALL JACK™

Increase productivity and decrease fatigue using iTOOLco's All Jack™. Install pipe, lights, cabinets, drywall, temporary dust barriers and much more with this innovative jack designed to lift and support the weight of your workpiece while you anchor it into position.

High ceilings and ladder work are not a problem for this dynamic tool. Reach from 58" to a staggering height of 13'6". The industrial gas shock ensures a snug, stable support that stays in place while you complete the installation. Once your workpiece is secured into place, simply remove the All Jack™ by releasing the shock. More powerful than a typical support pole, the All Jack's gas shock can handle your most challenging jobs.



SCAN QR

CORDLESS CANNON 3K™

Speed, Versatility, and performance are all yours with iTOOLco's Cordless Cannon 3K™. This portable 3,000 lb. puller is intuitively designed to handle all of your day-to-day wire pulls.

The built-in capstan switch automatically turns the puller on and off. Simply tug on the rope to start the pull and slack off the rope to shut it down.

Delivers dynamic performance in remote locations or areas where power is not yet available.

The high-capacity rechargeable battery is long-lasting and delivers maximum power.

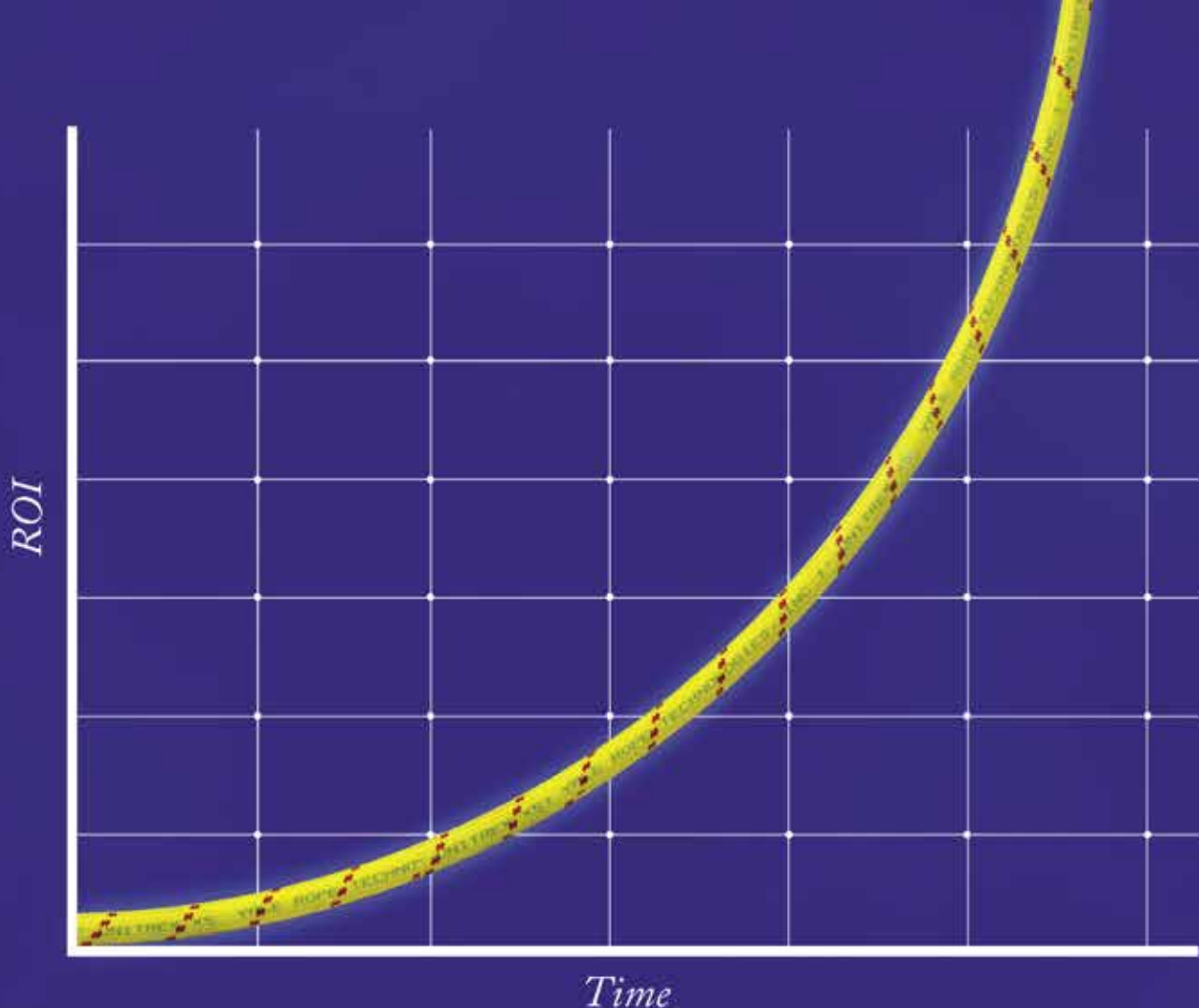
The Cannon 3K™ will even chew through a medium size run of 4 - 350 in 3" conduit with 4 - 90s 220' long in record time and still have half the battery life for your next pull.

SCAN QR



FOLLOW US:





Unitrex XS™ Max Wear. Unmatched performance in the field and in the boardroom.

Electric line stringing is easier and more economical with Unitrex™. Made with a core of Honeywell Spectra®, it is up to 10 times lighter than steel, while delivering comparable strength. The urethane-coated polyester jacket provides excellent abrasion resistance for great productivity that lasts.

To learn more, visit www.yalecordage.com

YALE CORDAGE
Performance. Passion. Possibilities.

77 Industrial Park Road | Saco, Maine 04072 | p (207) 282-3396, f (207) 282-4620