

October 2023

# THE UTILITY SOURCE

Products and Services for Today's

How to Improve  
Job Site Metrics  
with Wearables

Tips for  
Longer, Safer  
Power Tool  
Battery Life



Don't  
take  
the  
high  
road  
alone.



**GRACE**  
INDUSTRIES, INC.  
CONNECTED SAFETY

[www.gracefallsafety.com](http://www.gracefallsafety.com)

evluma

RoadMax Roadway Lighting  
RX1 | RX2 | RX3



# RoadMax<sup>®</sup>

## Redefine the Road Ahead



LEDs MAGAZINE  
**BRIGHTSTAR**  
AWARDS

HONOREE

Evluma builds off a legacy of low-glare lighting with RoadMax, a new family of roadway luminaires. For utilities and municipalities concerned with disability glare, meeting stringent roadway specifications, and achieving an efficient use of existing poles and roadway infrastructure this is a game changing luminaire.

[evluma.com](http://evluma.com)

[sales@evluma.com](mailto:sales@evluma.com)

425-336-5824

PG 4 | Tips for Longer, Safer Power Tool Battery Life

PG 10 | How to Improve Job Site Metrics with Wearables

PG 16 | Mack Trucks Introduces Mack® Connect, a Comprehensive Fleet Management Portal

PG 24 | Ad Index



# THE UTILITYSOURCE

Products and Services for Today's Electric, Telecom, and CATV Utilities

Vol. 23 Issue 10

### PUBLISHER

Glen Hobson  
205-441-5591  
glen@tipsmag.net

### ASSOCIATE PUBLISHER

Steven Goodwin  
205-624-2181  
steve@handfmedia.net

### ADMINISTRATIVE DIRECTOR

Steven Hobson  
steven@tipsmag.net

### EDITOR

Brandon Greenhill  
brandon@handfmedia.net

### CREATIVE/ WEB DIRECTOR

Jacklyn Greenhill  
jacklyn@handfmedia.net

## **S SELICK** LIFT, LOAD AND DELIVER WITH SELICK!

Whether you need to deliver a skid of blocks to a jobsite or move a 16,000 lb. load of steel, Sellick has the forklift that is right for you.

We have been engineering and manufacturing rough terrain forklifts for over 50 years and our nationwide dealer network offers superior support for all your parts and service requirements.

Call toll-free or e-mail us today for all your material handling needs.



**1-877-SELICK (735-5425)**  
**sales@sellickequipment.com**

P.O. Box 1568 • Pelham, AL 35124  
Phone: 205-441-5591 • Fax: 205-624-2181  
www.theutilitysource.net  
info@theutilitysource.net



*The Utility Source*™ is published twelve times a year on a monthly basis by Southern Digital Publishing, Inc. *The Utility Source*™ is distributed free to qualified subscribers. Non-qualified subscription rates are \$57.00 per year in the U.S. and Canada and \$84.00 per year for foreign subscribers (surface mail). U.S. Postage paid at Birmingham, Alabama and additional mailing offices.

*The Utility Source*™ is distributed to Power, Telcom and CATV Utilities and Utility Contractors throughout the USA. Publisher is not liable for all content (including editorial and illustrations provided by advertisers) of advertisements published and does not accept responsibility for any claims made against the publisher. It is the advertiser's or agency's responsibility to obtain appropriate releases on any item or individuals pictured in an advertisement. Reproduction of this magazine in whole or in part is prohibited without prior written permission from the publisher.

POSTMASTER: Send address changes to  
Southern Digital Publishing, Inc. P.O. Box 1568  
Pelham, AL 35124  
PRINTED IN THE USA

**TITAN CONNECT**  
**POWER**  
On Demand  
AUTO CRANE



## MAXIMIZE EFFICIENCY with Work Truck Automation

Increase productivity and savings.  
Decrease fuel and maintenance costs.

The Power On Demand™ system automates and optimizes your work truck's engine and PTO power to give you:

- Decreased fuel costs from unnecessary idling.
- Reduced carbon emissions.
- Remote troubleshooting and fleet monitoring.
- Extended engine and chassis life.
- Increased productivity.

Visit our website or contact your local dealer to learn more.



*Power Tool Institute identifies easily employed best practices*

Power tools and their batteries are rugged instruments designed to perform tough jobs, but they still require care to maintain safe, optimum performance. There are steps users can take to extend tool and battery life, and help keep power tools operating at peak performance for a longer life cycle.

The Power Tool Institute has compiled a list of best practices for safer use of batteries and power tools.

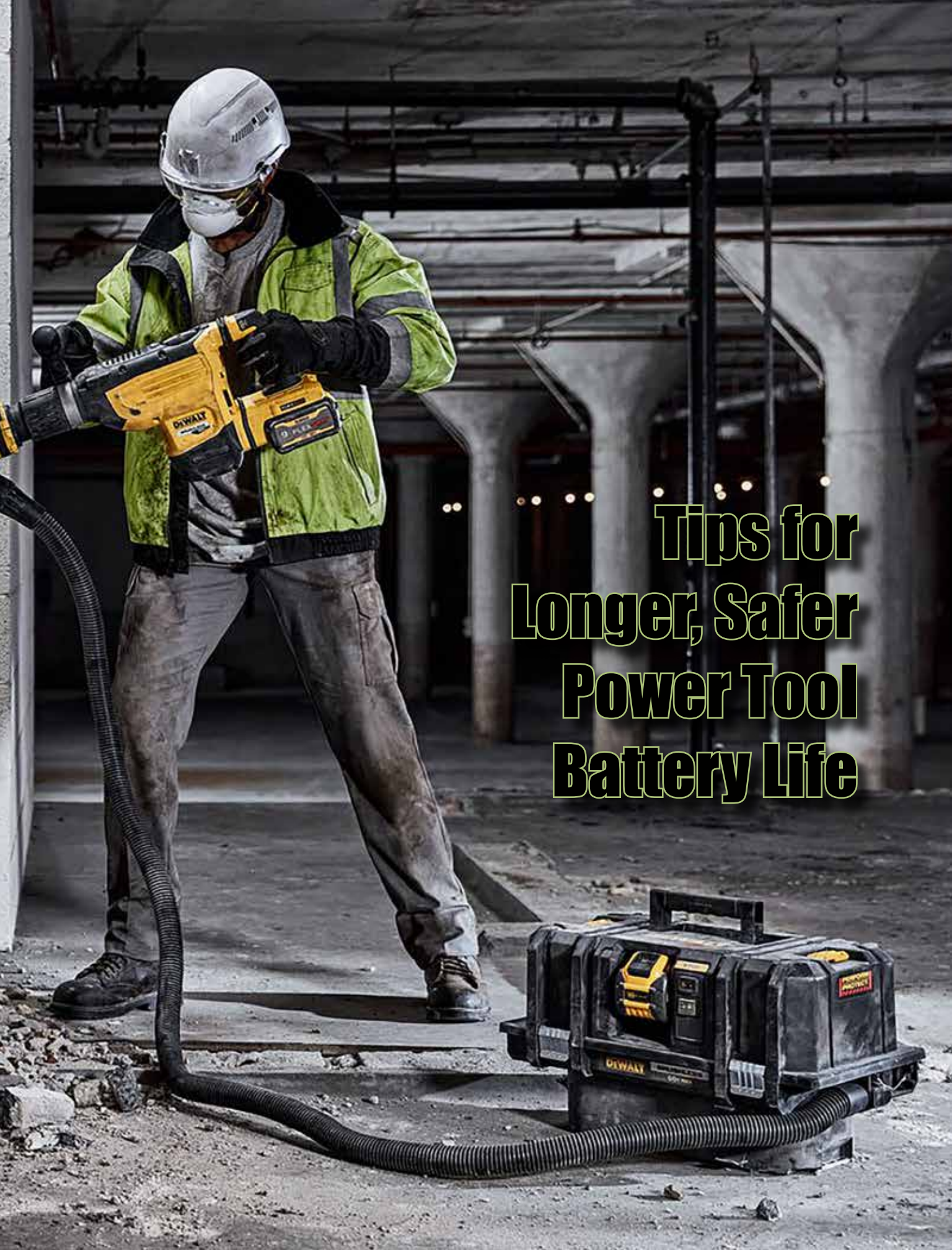
*Safe handling*

Start by reading the manufacturer's instruction manual – and only use original manufacturer's system components of tool, battery and charger. Do not impact or damage a battery (for example, do not use it as a hammer), use it solely for the defined purpose as specified by the manufacturer. If a battery has received a sharp blow, been dropped, or is damaged, discontinue use.

Regularly inspect batteries for signs of damage, such as crushing, cuts, or punctures. Be mindful of abnormal battery behavior, such as failure to fully charge or hold a charge, longer-than-usual charging times, noticeable drop in performance, liquid leakage from the battery, or melted plastic anywhere on the pack. These are indications of an internal problem.

Never modify, disassemble, or tamper with the battery because the performance can become unpredictable and dangerous. As a general practice, it is best to unplug battery chargers and remove battery packs from them when not in use.





# Tips for Longer, Safer Power Tool Battery Life

### *Safe storage*

Do not store batteries on their chargers. Always use and store the battery within the temperature limits stated by the manufacturer. Do not store in a closed location where sunlight may cause elevated temperatures, such as near a window or inside a vehicle. Do not store or transport the battery in a container with loose metal objects, such as coins, keys or nails, which may contact the terminals.

### *Safe response to overheating*

Though batteries and chargers are safe to use when operated properly, in rare instances a battery may overheat. If the battery is exhibiting signs of overheating (flames, smoke, smoldering, or melting), immediate action is required. If connected to a charger when exhibiting signs of overheating, always unplug the charger first. After unplugging the battery charger, then pour copious amounts of water on the battery and then submerge the battery (including any attached tool or charger – do not directly touch/disconnect the battery) in a sturdy container filled with water. When transferring the battery, avoid direct contact with the battery (use a long-handled shovel) and use appropriate personal protective equipment to protect face, hands and body, since there is a risk that overheated batteries may vent, explode, or emit flame.

If the battery is exhibiting flames, continue using copious amounts of water until the flame is extinguished, then submerge the battery (including any attached tool or charger) in a sturdy container filled with water. If water is not available, dirt, sand or a conventional ABC extinguisher may be used in an attempt to smother and cool the battery until water is available.

Keep the battery submerged, in a well-ventilated location, for at least 24 hours and at least 15 feet away from any combustible items. Contact the manufacturer for guidance on proper disposal.

For more information about extending the life of power tools and their batteries, visit <https://www.powertoolinstitute.com/>.

### *About PTI*

*With the vision to unify and educate others about power tools, since its founding in 1968, the Power Tool Institute (PTI) has established itself as the leading organization for building global understanding of power tools and for maintaining high standards of safety in the industry. Its members, a list of whom can be found here, represent market-leading brands in the areas of portable and stationary power tools. PTI's members are committed to improving the industry and to being the premier resource for power tool education. For more information, contact PTI 216-241-7333 or [pti@powertoolinstitute.com](mailto:pti@powertoolinstitute.com).*

**On the Web: [www.PowerToolInstitute.com](http://www.PowerToolInstitute.com) and [www.TakeChargeOfYourBattery.com](http://www.TakeChargeOfYourBattery.com) •**



# Upgrade your building wire.



Artist rendering of Copperweld® Building Wire Products



## Theft Deterrent

Metallurgically bonded conductor lowers scrap value, reducing theft incentive.



## Energy Efficient

Better energy efficiency than standard branch circuit wiring.



## Code Compliant

NEC Compliant for 600 Volt branch circuit conductors since 1972.



## Safety Tested

Listed by UL and ETL to industry safety standards per OSHA.



## Cost Stable

Reduced exposure to commodity fluctuation, improving your bottom line.



## Performance Proven

50 years of safe use with standard circuit components.



Learn More

## Copper where it counts™

Contact us for sales and info:

615-777-8595

[buildingwire@copperweld.com](mailto:buildingwire@copperweld.com)

[copperweld.com](http://copperweld.com)

# INDUSTRIAL ROOFTOP SAFETY MADE SIMPLE

TURN-KEY SAFETY RAIL SOLUTIONS FROM START TO FINISH  
INSPECT | SPECIFY | BUILD | INSTALL



SRC Mobile Safety Rails set the industry standard for OSHA compliant safety solutions to prevent falls and injury.



PROTECT LIVES.  
BE OSHA COMPLIANT.  
CONTACT US TODAY.



**SafetyRailCompany**  
Fall Protection for Life and Compliance

SAFETYRAILCOMPANY.COM | 888.434.2720

# Your Crew Communicates.

## Why Shouldn't Your Software?

Sync up your workflow with **Foundation Software's** family of integrated construction products.

 **FOUNDATION** software

Construction Accounting

**payroll**4construction

Construction Payroll Processing

 **MCCORMICK**

Estimating and Digital Takeoff

the  
**EDGE** 

Takeoff and Estimating

**TAKEOFF** 

Quantity Takeoff

**SAFETY** 

Health and Safety Management

**WorkMax** 

Mobile Time Tracking



**Learn More!**

[go.foundationsoft.com/product-family](https://go.foundationsoft.com/product-family)



# How to Improve Job Site Metrics with Wearables

Wearables have become a very fashionable topic in the construction industry, but it's not all window dressing, every day, wearables are promoting health, safety, connectivity, productivity and accuracy on construction sites.

## *An Accessory For Every Occasion*

A number of employee monitoring systems have been introduced to the construction industry with the aim of making employees safer.

Dash cams are being installed into truck cabs—but not to record traffic—to record the activities of the driver. Truck companies want to make sure drivers are checking their mirrors and especially aren't using their phones when behind the wheel.

The Spot-R fall alert and emergency evacuation system from Triax Technologies monitors employees' movements to alert safety personnel if the device changes elevation quickly, indicating a fall. And it alerts workers of a emergency evacuation.

The Scan-Link RFID tags monitor employees' locations and alerts equipment operators of employees who are located behind the machine.

Some smart watches detect vibration; that technology is used to monitor the ramifications to the body from using power equipment for a long time. Alerts tell the end-user when power tool use exceeds what the body can safely perform, and this is to prevent hand-arm vibration syndrome (HAVS).

Smart helmets monitor several health elements, such as fatigue, heart rate and stress, so workers and management can modify worker's activities in ways that promote employee health and job site safety and productivity.

## *Turning Historical Data Into Predictive Analytics*

A lot of times, this monitoring can lead to policy changes and coaching opportunities.

"One customer who uses our Scan-Link RFID technology reported to me the following story," says Jonathan Fava, president, Scan-Link Technologies, a CONEXPO-CON/AGG exhibitor. "We were looking at the number of times equipment operators were alerted to the presence of a nearby worker, and we noticed one person was causing a lot of alerts, so we pulled that individual aside and asked him why. He explained that he's the flagger

# Payroll People meet at a Tradeshow

Our payroll takes 2 minutes to prepare and keeps us compliant with the DAVIS BACON ACT

Our payroll takes many hours and 3 people to put together

We get an 80% savings in time and money with compliant client - compared to manually prepared payroll

Compliant client sounds great. My friend's construction company was heavily fined being out of compliant. He might go to jail!

I USE COMPLIANT CLIENT BY EMARS

WE MANUALLY PREPARE PAYROLL

Our payroll is certified, worry Free and very inexpensive plus it is DOL APPROVED

- Encrypted
- Free Demo
- Works with Excel
- 55,000 + Client
- Web Based
- Paperless
- Works with Time Clock

**Compliant**  
 **client**  
by eMars

emarsinc.com  
480-595-0466

so, when operators load the machine onto a float, he gets up on the float to aid the operator place the machine. We advised him that behavior is unsafe; he could get struck by the machine or fall off the float. So, we told him a safer way to perform his job and wrote down new safety protocols into our guidelines and training.”

Using historical data to learn how things happen is the first step to promoting safety on the job site. “It’s not enough just to learn how accidents have happened,” says Fava. “The next step is to analyze data in order to prevent accidents from happening.

With all of the employee detections picked up by the Scan-Link system, managers can identify “hot spots”—spots where machines detect people the most frequently.

“Using this data, customers can identify areas where a struck-by incident is most likely to occur. Then, customers can make decisions that will decrease the risk of an accident from happening by moving the location of materials, so workers don’t have to walk in a machine’s workspace or by putting up signage warning employees of high-risk areas,” says Fava.

#### *Assisted Reality Connects Two Physical Worlds*

Wearables are also instrumental in merging realities, which is bringing connectivity, productivity and accuracy to job sites.

Exoskeleton and assisted reality headset manufacturer Real Wear just released the second version of their assisted reality headset, called the RealWear Navigator 500.

It is sleeker, lighter and is more ergonomic than the previous model (the HMT100) for all-day comfort yet is rugged and durable for use on construction sites and in industrial settings.

It features a modular design, a 48-megapixel cam-

era sensor with enhanced zoom capability, incredible low light performance, and is compatible with more than 200 optimized apps. A hot-swappable battery allows for continuous use the whole day.

“With the Navigator 500, we wanted to provide scale enterprise solutions as part of the digital transformation movement. Today, we see the acceleration of digital transformation on the future of work, especially since the pandemic,” says Andrew Chrostowski, chairman and CEO, RealWear Technologies. “Our device is hands free and keeps you present. You don’t want your head stuck in the meta verse when you’re working around heavy equipment.”

The device allows the user to take photo and video at six different zoom levels, as well as call someone. The device takes audio commands for all features; you say the words “take a picture” or “zoom” or “call Herald” and it does it, so you can keep your hands on what you’re doing.

With it, users can aid in remote inspections and diagnostics. By equipping someone at the job site with the Navigator 500, they can act as the eyes for inspectors and technicians, so inspections and troubleshooting equipment can be done remotely, saving time and travel costs.

#### *Augmented Reality Expands By Becoming Handheld*

The Trimble XR10 with Microsoft HoloLens brings a different kind of connectivity and reality. The technology connects virtual reality to physical reality to provide mixed reality.

HoloLens users can see both the physical world and the virtual world; the digital image is overlaid onto the physical world.

This technology is especially handy to trades; now, they no longer need to look at paper designs for what they are installing and then try to map out where that is in the physical world by establishing a frame of reference and taking out the measur-



# SAFELY Lifts Up To 500 lbs!

- Ergonomic
- Portable
- Lightweight
- Meets OSHA & ASME Requirements

## Customized Safety Lifting Devices For Any Application

Available in both  
**CHAIN & CABLE**  
Configurations



The Sky Hook is your personal safety lifting solution, preventing lifting injuries while saving you both time and money!

**800-4-SKYHOOK**

800-475-9466 • 208-365-5770

[www.skyhookmfr.com](http://www.skyhookmfr.com)

**SKY HOOK**

ATTCO, Inc. OSA  
by SYCLONE ATTCO SERVICE

ing tape; they can simply see, for example, the virtual pipes and their detailed measurements, and install the pipes with high accuracy. They can also see what is being installed nearby, so they can identify potential complications.

Trimble, a featured exhibitor at CONEXPO-CON/AGG, recently expanded the potential for BIM (business information modeling) users to deploy augmented reality on the job site by introducing

the Trimble Connect AR app, which is compatible with Trimble Connect. The app is downloaded to a phone or tablet and allows users an augmented reality experience by pushing BIM data to their phone and overlaying it onto images of the real world on the device's screen.

This eliminates what can be a costly financial barrier to some customers," says Martin Holmgren, general manager of building field solutions at

Trimble. "And users can interact with Trimble Connect AR users in the digital space. For example, I can leave a message in the digital space with my Trimble XR10 and someone with the Trimble Connect AR app on their phone can detect the message, even weeks later as they walk by the location where it was left and read it. This greatly enhances communications and streamlines workflows."

Trimble expects people who don't need to be fully hands-free, such as supervisors, managers, inspectors, and building owners will use it to perform tasks, such as QA/QC, updating punch lists, and measuring construction progress.

"The app allows for the incorporation of AR into workflows that don't require the user to be hands-free, and we think our app will ultimately drive AR in a much wider range of adoption," says Holmgren.

[www.conexpoconagg.com](http://www.conexpoconagg.com) •



An ounce of prevention is worth a pound of cure

**CRITTER GUARD**

Line Guard | Pole Guard | BirdBloc  
**Learn More at [CritterGuard.org](http://CritterGuard.org)**

The advertisement features a squirrel perched on a power line at the top. Below this is a white banner with the slogan "An ounce of prevention is worth a pound of cure" in a maroon font. The CritterGuard logo, consisting of a stylized 'G' with a green vine-like element, is positioned to the left of the words "CRITTER GUARD" in maroon and grey. Below the logo, the text "Line Guard | Pole Guard | BirdBloc" is displayed in a grey font, followed by "Learn More at CritterGuard.org" in a bold maroon font. The bottom half of the advertisement shows two photographs: the top one shows a close-up of a utility pole with a CritterGuard device attached, and the bottom one shows a wide view of power lines and towers against a clear blue sky.





# STRUCTURAL STEEL CO., INC.

## Pre-Engineered Buildings Built to Withstand The Rugged Northeast Winters

- Commercial, Industrial and Agricultural Buildings Built to Satisfy Your Building Needs
  - Pre-Engineered Steel Packages
  - Pre-Engineered Post Frame Packages
  - Mini Storage Buildings



*Call For a Quote On  
Your Next Project*

***We Manufacture 26 & 29 ga.  
Steel Roofing & Siding***



# STRUCTURAL STEEL CO., INC.



607 Rt. 13 S, Cortland, NY 13045

**National: 1-800-323-7739**



(607) 753-9384 • Fax: (607) 753-6272 • [www.essexsteel.com](http://www.essexsteel.com)

# Mack Trucks Introduces Mack® Connect, a Comprehensive Fleet Management Portal



Mack Trucks today launched Mack® Connect, a comprehensive fleet management portal enabling customers to digitally access information about the Mack-powered trucks in their fleet. Mack made the announcement during the American Trucking Associations (ATA) Management Conference & Exhibition (MC&E), Oct.14 to 17, at the Austin Convention Center, Austin, Texas.

“Mack Connect improves customer visibility into the health and performance of their vehicles and simplifies the process to access the data,” said Jonathan Randall, president of Mack Trucks North America. “We listened to our customers and developed this portal to help fleets improve their operational efficiencies and profitability, while also allowing them the visibility to ensure their trucks are operating at peak performance.”

Mack Connect gathers critical aspects about a customer’s trucks, services and their specific application, translating this into improved fuel efficiency, safety and productivity. The Mack Connect toolbox includes data about asset location, idle time, traffic information, fuel efficiency, safety performance and vehicle speed. Customers can access the status of their Mack vehicles through a 4G Telematics Gateway, factory-installed at Lehigh Valley Operations, Macungie, Pennsylvania, where all Class 8 Mack vehicles for North America and export are assembled.

# REPAIR CONDUIT IN A SNAP!

- No Tape
- No Plastic Straps,
- No Metallic Straps

## NO KIDDING!

Designed especially for  
power, communications,  
and fiber optics



“The World Leader In Split Conduit Products”



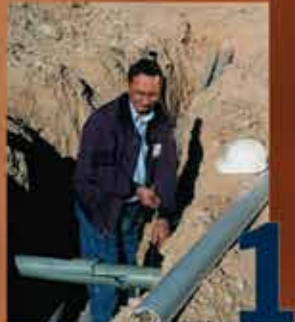
**Conduit Repair Systems, Inc.**

The World Leader In Split Conduit Products

800-670-1804

fax: 435-673-8724

email: [crs@conduitrepair.com](mailto:crs@conduitrepair.com)



Step 1: Remove  
Damaged Conduit



Step 2: Cut Split  
Duct Conduit to Fit



Step 3: Snap in  
Place



Step 4: Attach  
Adapters



Step 5: Finish Job  
in Record Time

Please Visit Our Website at [WWW.CONDUITREPAIR.COM](http://WWW.CONDUITREPAIR.COM)

# ENHANCED EFFICIENCY AND RELIABILITY WITH



FIBER SPLICING  
TRAILERS & INDUSTRIAL  
SAFETY EQUIPMENT



Contact Us

303.975.7432 sales@pelsue.com

**UPGRADE YOUR SETUP**  
at  
**PELSUE.COM**

"Mack Connect is a portal that offers customers access to critical data that goes beyond what they are used to seeing," said Patrick Brown, Mack Trucks senior strategy and sustainability manager. "Mack remains committed to simplifying data so customers can easily use it to make decisions to increase their ROI and better manage their fleet."

Mack Connect offers visibility to the Mack Guard-Dog® Connect integrated telematics solution so customers can easily manage fault events should they occur, while also providing visibility to over-the-air updates when available. Reporting and analytics are available so customers may analyze the data to determine whether adjustments need to be made to improve efficiencies.

[www.volvogroup.com](http://www.volvogroup.com)

The test tools you need - for the information you require.



From monitoring equipment, tools and test instruments to the need for on-going calibration requirements and the training to understand everything - there is no wonder the maintenance professional is overwhelmed. With the availability of new and upcoming technology, information overload can quickly set in when trying to put together the best maintenance solution. **That's where we come in.** EDE can demystify electrical testing programs, offer support, training programs and the high tech equipment to make your maintenance activities straight forward and motors and generators doing what they are supposed to do - run. We will help you **Find the Way.**



970/292-8207 • [www.edeinst.com](http://www.edeinst.com)

# Maddox is the one-stop shop for your transformer needs

Founded by a team of industry veterans focused exclusively on the transformer and transformer-related needs of industrial and commercial clients.



## Sell

Maddox stocks and sells the highest quality transformers from dry types and padmounts to substations.

## Rent

With thousands of units in stock, Maddox rents out transformers for the temporary power needs of customers across North America.

## Repair

With shops on both coasts Maddox inspects, tests, and repairs transformers to ensure that they are in top working condition.

## Purchase

We offer a great price that includes handling all the transportation and environmental issue.

LANshack

Specializing in Custom Pre-Terminated Fiber Optic & Copper Ethernet Assemblies Since 1997!

We Make IT Easy!

www.LANshack.com

1-888-568-1230

sales@LANshack.com



ISO 9001

Fast Lead Times

- ✓ Any Fiber Type
- ✓ Any Jacket Type
- ✓ Any Strand Count

Your One-Stop-Shop for all your cabling and connectivity needs.

We Also Stock Premium Quality

- Fiber Optic Enclosures
- Fiber Optic Patch Cables
- MTP Cassettes
- Network Switches & SFPs
- Keystone Jacks & Modular Plugs
- Ethernet Patch Cables & Patch Panels
- Datacom Tools & Toolkits
- Network Racks & Cabinets
- ... and MORE!



# Work shouldn't hurt.

## SOFT KNEES® No-Strap Knee Pads

## STOP a LADDER®

Another fine **ergo KNEX** product  
[www.ergoknex.com](http://www.ergoknex.com)



888-456-3372 • [www.safeworker.com](http://www.safeworker.com) • [info@safeworker.com](mailto:info@safeworker.com)

# B BROWN BEAR



OFF HIGHWAY  
HIGH FLOTATION  
4X4 CARRIER

COMPOSTING  
ATTACHMENTS



BRUSH  
MULCHING  
ATTACHMENT

BACK-FILLING  
ATTACHMENTS



# WWW.BROWNBEARCORP.COM

641-322-4220  
sales@brownbearcorp.com

BROWN BEAR CORPORATION

CORNING, IA 50841  
www.youtube.com/c/Brownbearcorp

# BUILT FOR EVERYTHING THAT'S ON THE LINE

HUSKIETOOLS.COM

SINCE 1976



FREE OFFER - CONTACT US:  
POWER@HUSKIETOOLS.COM

HIGH-PERFORMANCE  
UTILITY LINEMAN  
TOOLS & EQUIPMENT

## THE INDUSTRY'S #1 POWER UTILITY SOLUTIONS BRAND

OVER  
**200**  
CHOICES

BATTERY  
POWERED  
HYDRAULIC  
CUTTING &  
COMPRESSION  
TOOLS



SLC-RL760YC

BATTERY PLATFORMS:  
MILWAUKEE®  
MAKITA®  
HUSKIE®

6, 12 & 15 TON  
COMPRESSION TOOLS  
CUTTING TOOLS HANDLE  
UP TO 2515 ACSR,  
5" CU/AL, 5/8" GUY WIRE,  
GROUND ROD, BOLTS,  
& WIRE ROPE

NEW  
JAWS



**21** HAND POWERED HYDRAULIC  
CUTTING & COMPRESSION  
MANUAL TOOLS

INCLUDING:  
6 & 12 TON COMPRESSION TOOLS  
FOR W, K, U-TYPE DIES & 4-POINT  
DIELESS HEADS. CUTTING TOOLS  
FOR ACSR, CU, AL, GUY WIRE, EHS,  
GROUND ROD, BOLTS, & WIRE ROPE



**22** REMOTE HEADS  
CUTTING and  
COMPRESSION



DIES &  
DIE KITS OVER  
**200**  
CHOICES

BURNDY EQUIVALENT:  
W, U, P, L, & CSA DIES  
KEARNEY EQUIVALENT:  
D, WH-2, WH-3 DIES  
ALCOA EQUIVALENT:  
60 & 100 TON DIES  
WIRE ROPE DIES



**12**  
TIGER POLE  
PULLER &  
MATERIAL  
HANDLING  
PRODUCTS



**TIGER**  
BY HUSKIE TOOLS

HUSKIE TOOLS  
CARRIES THE  
INDUSTRY'S  
MOST POPULAR  
CABLE GRIP  
SIZES



**60** TON  
**100** TON  
**200** TON  
PRESSES



SINGLE ACTING  
DOUBLE ACTING  
STEEL, TITANIUM

**12** HIGH-PRESSURE PUMPS  
BATTERY POWERED,  
ELECTRIC & GAS PUMPS;  
HIGH-PRESSURE HOSES  
& FITTINGS



ANNOUNCING  
NEW HUSKIE TOOLS  
HTPZ PROLINE  
BATTERY POWERED  
PUMP SERIES

LEARN MORE



Huskie Tools is not affiliated with, authorized or endorsed by Milwaukee Electric Tool Corporation. Milwaukee listed batteries and chargers are provided by Huskie Tools® Milwaukee® 48V™ M18™/M18™ are registered trademarks of Milwaukee Electric Tool Corporation. Huskie Tools® is not affiliated with, authorized, or endorsed by Makita®. Compression, Makita® brand batteries and chargers are provided by Huskie Tools® Makita® and LXT are registered trademarks of Makita® Corporation.



# ROME

Available in 10, 12, 14, and 16 foot widths



Manufacturing Heavy Duty Construction and Agricultural Equipment Since 1932

Available in 16, 18, 20, 24, and 30 foot widths



Available with 36 or 42" blades, and up to 20' wide



Available in 18 and 22 yard versions

ROME Plow has been the premier name in heavy duty disc plows for over 87 years.

ROME has been manufacturing pivot dump and ejector scrapers for over 45 years for the construction and agricultural industries.

ROME also manufactures a full line of leveling scrapers (with and without gates) and haul road maintenance tools (with and without rollers)

For more information on our products or for the closest authorized ROME dealer please contact us.

Available in 24, 28, 31, 34 and 37 Yards



770-748-4450 - [www.romeplow.com](http://www.romeplow.com)

Steel Tracks available to fit any articulating tractor.

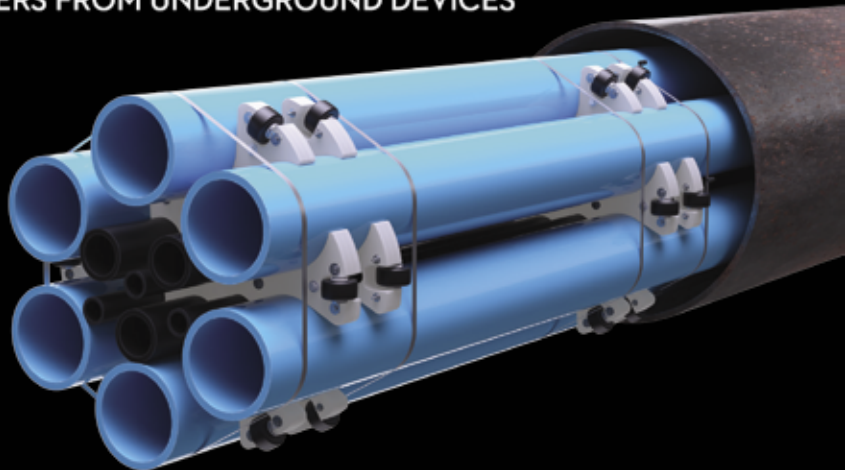
## Ad Index

Company	Pg.	Website
Auto Crane	3	<a href="http://www.autocrane.com">www.autocrane.com</a>
Brown Bear Corp	21	<a href="http://www.brownbearcorp.com">www.brownbearcorp.com</a>
Conduit Repair	17	<a href="http://www.conduitrepair.com">www.conduitrepair.com</a>
Copper Weld	7	<a href="http://www.copperweld.com">www.copperweld.com</a>
Critter Guard	14	<a href="http://www.critterguard.com">www.critterguard.com</a>
EDE	18	<a href="http://www.edeinst.com">www.edeinst.com</a>
Emars	11	<a href="http://www.emarsinc.com">www.emarsinc.com</a>
Essex Steel	15	<a href="http://www.essexsteel.com">www.essexsteel.com</a>
Evluma	1	<a href="http://www.evluma.com">www.evluma.com</a>
Foundation Software	9	<a href="http://www.go.foundationsoft.com">www.go.foundationsoft.com</a>
Grace Industries	IFC	<a href="http://www.gracefallsafety.com">www.gracefallsafety.com</a>
Huskie Tools	22	<a href="http://www.huskiertools.com">www.huskiertools.com</a>
LAN Shack	20	<a href="http://www.lanshack.com">www.lanshack.com</a>
Maddox Transformer	19	<a href="http://www.maddoxtransformer.com">www.maddoxtransformer.com</a>
Pelsue	18	<a href="http://www.pelsue.com">www.pelsue.com</a>
Ramsey Winch	BC	<a href="http://www.ramseywinch.com">www.ramseywinch.com</a>
Resa Power	IBC	<a href="http://www.resapower.com">www.resapower.com</a>
Rome Plow	23	<a href="http://www.romeplow.com">www.romeplow.com</a>
Sellick	2	<a href="http://www.sellickequipment.com">www.sellickequipment.com</a>
Sky Hook	13	<a href="http://www.skyhookmfr.com">www.skyhookmfr.com</a>
Underground Devices	24	<a href="http://www.udevices.com">www.udevices.com</a>
Working Concepts	20	<a href="http://www.safeworker.com">www.safeworker.com</a>

# BORE SPACERS

WHEN YOU HAVE TO GO UNDER IT, YOU NEED  
BORE SPACERS FROM UNDERGROUND DEVICES

- Ideal for installing multiple conduits underground
- Bore Spacers are custom designed and manufactured to meet your requirements
- Fast delivery of proposal drawings and on-time delivery of full featured, quality Bore Spacers



Call (800) 800-2118 for **FAST TRACK**  
design & delivery today!



**UNDERGROUND DEVICES**  
INCORPORATED

420 ACADEMY DRIVE • NORTHBROOK, ILLINOIS 60062  
Phone: (847) 205-9000 • Fax: (847) 205-9004  
Website: <http://www.udevices.com>

# RESA POWER™

Reliable and Safe. The Power of Us.



SCAN ME



REVIEW OF ENGINEERING DOCUMENTATION

PERSONAL PROTECTIVE EQUIPMENT (PPE)

ARC FLASH/SHOCK HAZARD LABELS

ARC FLASH HAZARD ANALYSIS

PREVENTIVE MAINTENANCE

SAFETY TRAINING

 [resapower.com](http://resapower.com)

 800-576-RESA

## ARE YOU IN COMPLIANCE?

### ELECTRICAL SAFETY IN THE WORKPLACE WITH RESA POWER

When it comes to hands-on power systems engineering and repairs, the safety of technicians is always paramount.

RESA Power offers Arc Flash / Safety / NFPA 70E Awareness Training to prioritize the well-being of technicians and minimize the chance of injuries, downtime, and property damage.

- Arc Flash Safety Awareness Classes
- NFPA 70E Compliance Assessment
- NETA / NFPA 70B Testing and Maintenance

Make sure your workers stay out of harm's way and are up-to-date on critical compliance updates set by OSHA and the NFPA 70E 2021 Standard for Electrical Safety in the Workplace.

Our training classes can benefit anyone who wants to stay informed on the latest safety practices - from Electricians and Contractors to Environmental Health and Safety (EHS) Managers and facility maintenance personnel.

Our instructors are professionally trained and have decades of field experience with electrical safety to offer.

#### CONTACT US TODAY

Request a quote

Email: [arc.flash@resapower.com](mailto:arc.flash@resapower.com)

Phone: 763-784-4040



Network with us on LinkedIn and follow us on social media as we routinely publish the most recent company news, share best practices, post open jobs, and more.

[www.resapower.com](http://www.resapower.com)

# RAMSEY WINCH®



## HDP 4000

Heavy Duty Planetary

- Pull: 4,000 lbs.
- Cable Capacity: 89ft.
- Speed: 86 fpm
- Application:
  - Wood chipping
  - Utility line clearing
  - Disaster clean up
  - Land clearing

## PATRIOT 16500

Heavy Duty Planetary

- Pull: 16,500 lbs.
- Cable Capacity: 85ft.
- Speed: 22 fpm
- Application:
  - Utility & service trucks
  - Fire & rescue
  - Waste & refuse
  - Forestry

## HELIOS 20000

Heavy Duty Planetary

- Pull: 20,000 lbs.
- Cable Capacity: 260ft.
- Speed: 21.8 fpm
- Application:
  - Heavy hauling
  - Equipment transport
  - Loaders & earthmovers

Visit [www.ramseywinch.com](http://www.ramseywinch.com) or call 800-777-2760.

